

VOLTAGE RANGE: 2500 - 3000V

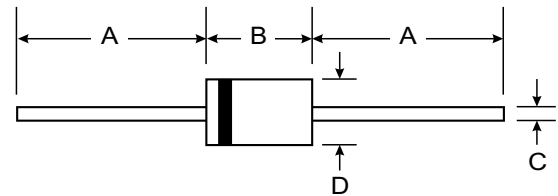
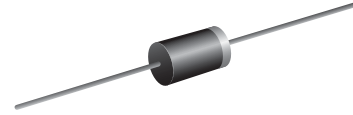
CURRENT: 0.2 A

Features

- Low cost
- Low leakage
- Low forward voltage drop
- High current capability
- Easily cleaned with alcohol, Isopropanol and similar solvents

Mechanical Data

- Case: DO-41, Molded Plastic
- Terminals: Plated Leads Solderable per
- MIL-STD-202, Method 208
- Polarity: Cathode Band
- Approx. Weight: 0.35 grams
- Mounting Position: Any
- Marking: Type Number



DO-41 Plastic		
Dim	Min	Max
A	25.40	—
B	4.06	5.21
C	0.71	0.884
D	2.00	2.72
All Dimensions in mm		

Maximum Ratings and Electrical Characteristics @ T_A = 25°C unless otherwise specified

Single phase, half wave, 60Hz, resistive or inductive load. For capacitive load, derate current by 20%.

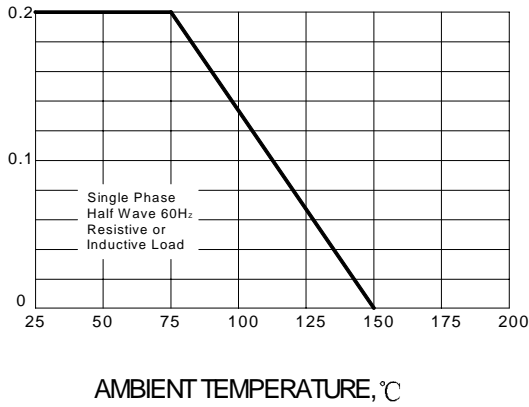
Characteristic	Symbol	R2500F	R3000F	Unit
Maximum recurrent peak reverse voltage	V _{RRM}	2500	3000	V
Maximum RMS voltage	V _{RMS}	1750	2100	V
Maximum DC blocking voltage	V _{DC}	2500	3000	V
Maximum average forward rectified current 9.5mm lead length, @ T _A =75°C	I _{F(AV)}	0.2		A
Peak forward surge current 8.3ms single half-sine-wave superimposed on rated load @ T _J =125°C	I _{FSM}	30.0		A
Maximum instantaneous forward voltage @ 0.2A	V _F	4.0	5.0	V
Maximum reverse current @ T _A =25°C at rated DC blocking voltage @ T _A =100°C	I _R	5.0 100.0		μ A
Maximum reverse recovery time (Note1)	t _{rr}	500		ns
Typical junction capacitance (Note2)	C _J	15		pF
Operating junction temperature range	T _J	- 55 ---- + 150		°C
Storage temperature range	T _{STG}	- 55 ---- + 150		°C

NOTE: 1. Measured with I_F=0.5A, I_R=1A, I_{rr}=0.25A.

2. Measured at 1.0MHz and applied reverse voltage of 4.0V DC.

AVERAGE FORWARD RECTIFIED CURRENT AMPERES

FIG.1 – FORWARD DERATING CURVE



PEAK FORWARD SURGE CURRENT AMPERES

FIG.2 – PEAK FORWARD SURGE CURRENT

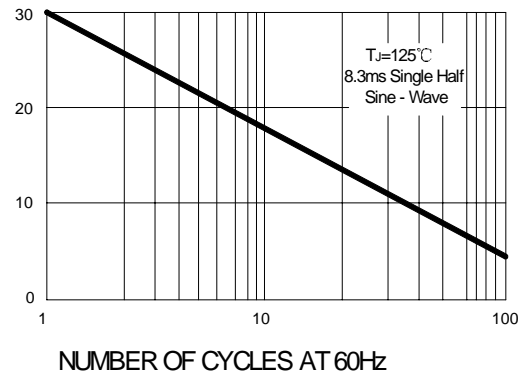
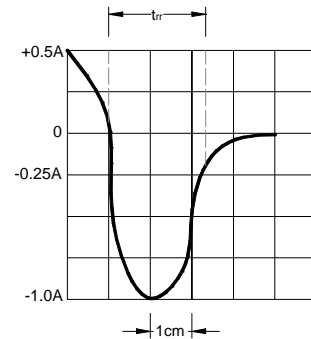
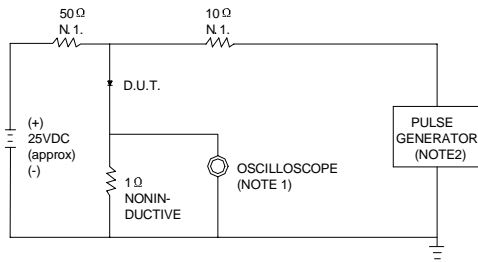


FIG.3 – TEST CIRCUIT DIAGRAM AND REVERSE RECOVERY TIME CHARACTERISTIC



NOTES: 1. RISE TIME = 7ns MAX. INPUT IMPEDANCE = 1MΩ, 22pF.
2. RISE TIME = 10ns MAX. SOURCE IMPEDANCE = 50 Ω.

SET TIME BASE FOR 50/100 ns/cm

X-ON Electronics

Largest Supplier of Electrical and Electronic Components

Click to view similar products for [Diodes - General Purpose, Power, Switching category](#):

Click to view products by [SUNMATE manufacturer](#):

Other Similar products are found below :

[MCL4151-TR3](#) [MMBD3004S-13-F](#) [RD0306T-H](#) [DSE010-TR-E](#) [BAV17-TR](#) [BAV19-TR](#) [1N3611](#) [NTE156A](#) [NTE574](#) [NTE6244](#) [1SS181-TP](#) [1SS400CST2RA](#) [SDAA13](#) [SHN2D02FUTW1T1G](#) [LS4151GS08](#) [FC903-TR-E](#) [1N4449](#) [1N456A](#) [1N4934-E3/73](#) [1N914B](#) [1N914BTR](#) [1SS226-TP](#) [RFUH20TB3S](#) [D291S45T](#) [BAV300-TR](#) [BAW56DWQ-7-F](#) [BAW75-TAP](#) [MM230L-CAA](#) [IDW40E65D1](#) [JAN1N3600](#) [JAN1N4153-1](#) [JAN1N4454-1](#) [JAN1N4454UR-1](#) [LL4151-GS18](#) [053684A](#) [SMMSD4148T3G](#) [707803H](#) [NSVDAN222T1G](#) [CDSZC01100-HF](#) [LL4150-M-08](#) [1N4454-TR](#) [BAV70HDW-7](#) [BAS28-7](#) [JANTX1N6640](#) [BAW56HDW-13](#) [BAS28 TR](#) [VS-HFA04SD60STR-M3](#) [NSVM1MA152WKT1G](#) [1SS388-TP](#) [RGP30D-E3/73](#)