



SK3020R

Band2, RF-Rx SAW Filter
Revision 0 : April 2016

MSL 3 Device



- Electrical Characteristics
 - Package Dimensions
 - Testing Environment
 - Frequency Characteristics
-

□ Electrical Characteristics

Maximum Ratings

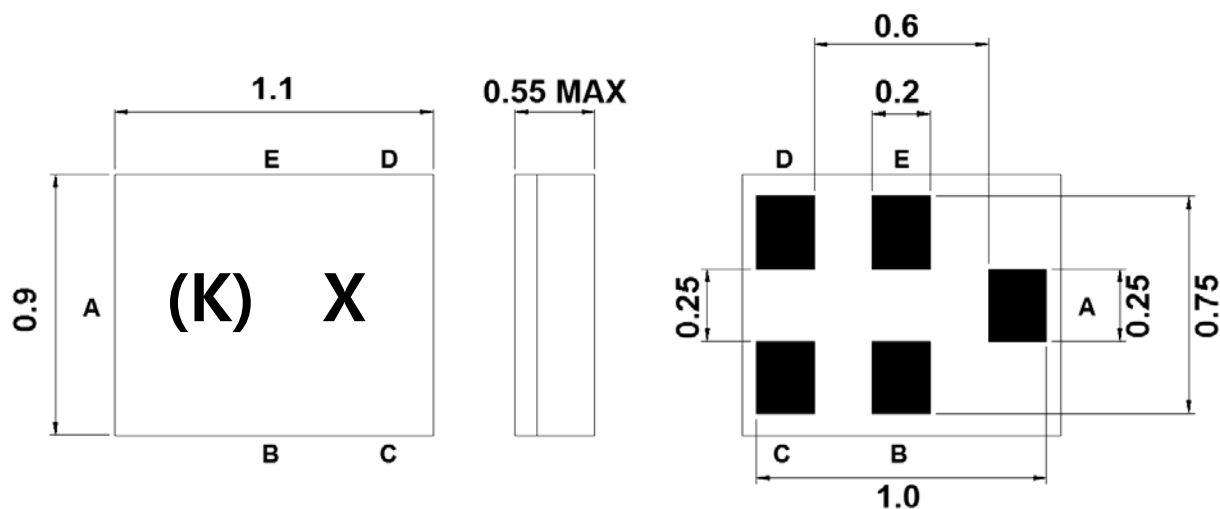
Parameters Description	Unit	Minimum	Typical	Maximum
Operating Temperature Range	°C	-30	-	+90
Storage Temperature Range	°C	-40	-	+90
Maximum DC Voltage	V	-	-	-
Maximum Input Power	dBm	-	-	10
Source Impedance (Unbalanced)	Ω	-	50	-
Load Impedance (Unbalanced)	Ω	-	50//4.7nH	-
Package type & size	C14			
Length x Width	mm ²	-	1.1 x 0.9	-
Height	mm	-	-	0.55
ESD	HBM:1A(499V) MM:M1(100V)			

Electrical Specification

Parameters Description	Unit	Minimum	Typical	Maximum
Center Frequency (Fo)	MHz	-	1960.0	-
Insertion Loss within 1930.0 ~ 1990.0 MHz	dB	-	2.3	4.0
Amplitude Ripple within 1930.0 ~ 1990.0 MHz	dB _{p-p}	-	1.0	2.7
Input VSWR within 1930.0 ~ 1990.0 MHz	-	-	1.9	2.3
Output VSWR within 1930.0 ~ 1990.0 MHz	-	-	1.8	2.3
D.C ~ 960.0 MHz	dB	38	41	-
1558.0 ~ 1608.0 MHz	dB	35	36	-
1710.0 ~ 1850.0 MHz	dB	35	37	-
1850.0 ~ 1910.0 MHz	dB	32	39	-
2020.0 ~ 2070.0 MHz	dB	7	27	-
2070.0 ~ 2400.0 MHz	dB	25	33	-
2400.0 ~ 2500.0 MHz	dB	33	39	-
2500.0 ~ 3780.0 MHz	dB	28	37	-
3780.0 ~ 3980.0 MHz	dB	30	40	-
3980.0 ~ 5790.0 MHz	dB	21	34	-
5790.0 ~ 5970.0 MHz	dB	21	34	-
5970.0 ~ 7720.0 MHz	dB	21	23	-
7720.0 ~ 7960.0 MHz	dB	17	23	-
7960.0 ~ 8000.0 MHz	dB	17	23	-

Notes : (1) With Matching Network .

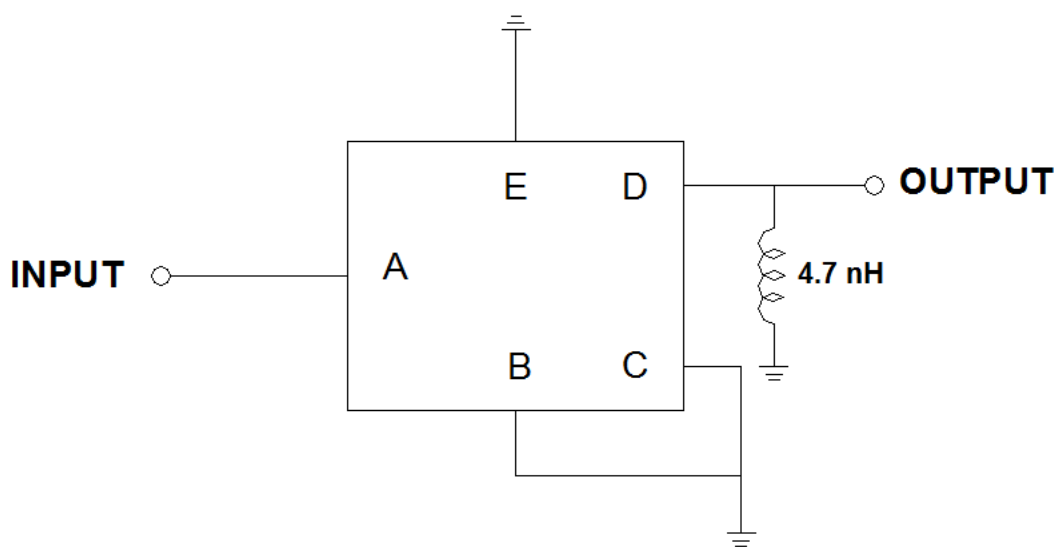
Package Dimensions



Marking Descriptions	
(K)	Series Number
X	Date Code(Year+Month)

Pin Description	
B,C,E	Ground
A	Input
D	Output

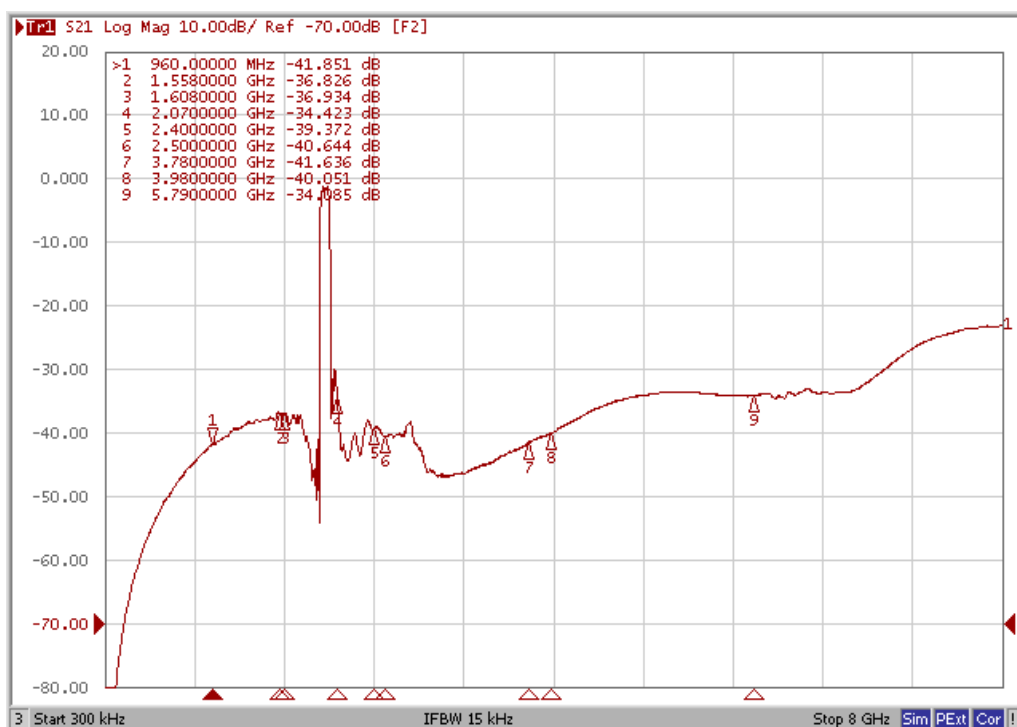
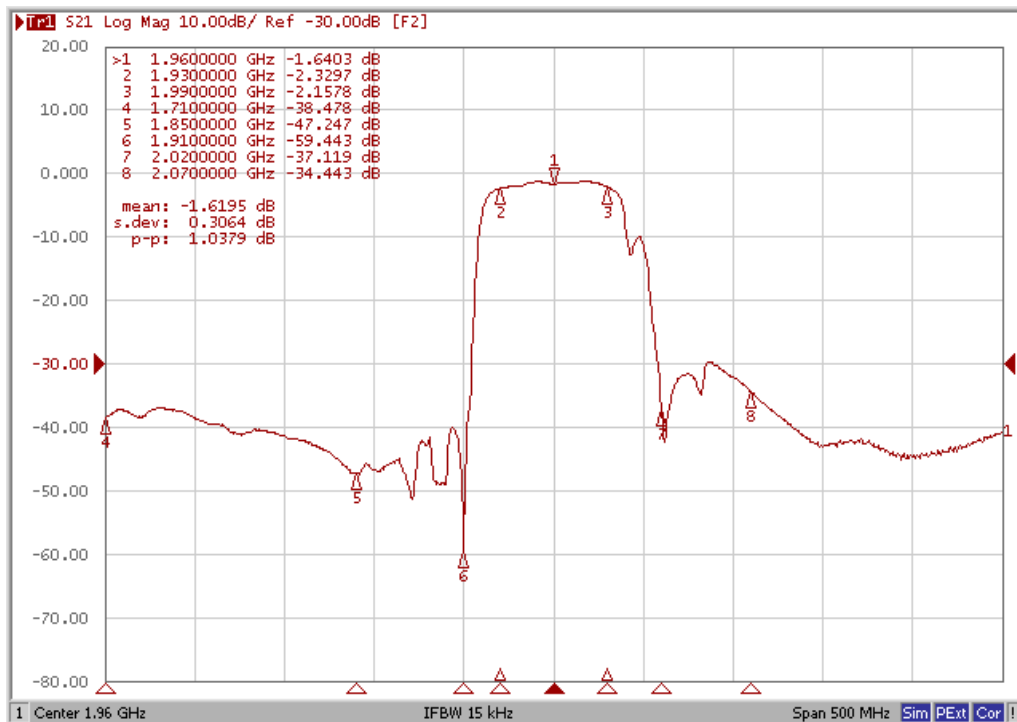
Testing Environment



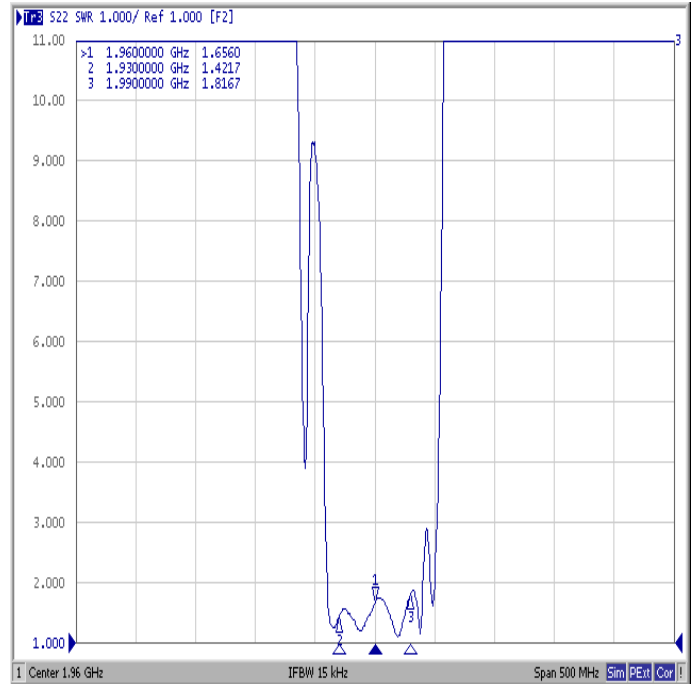
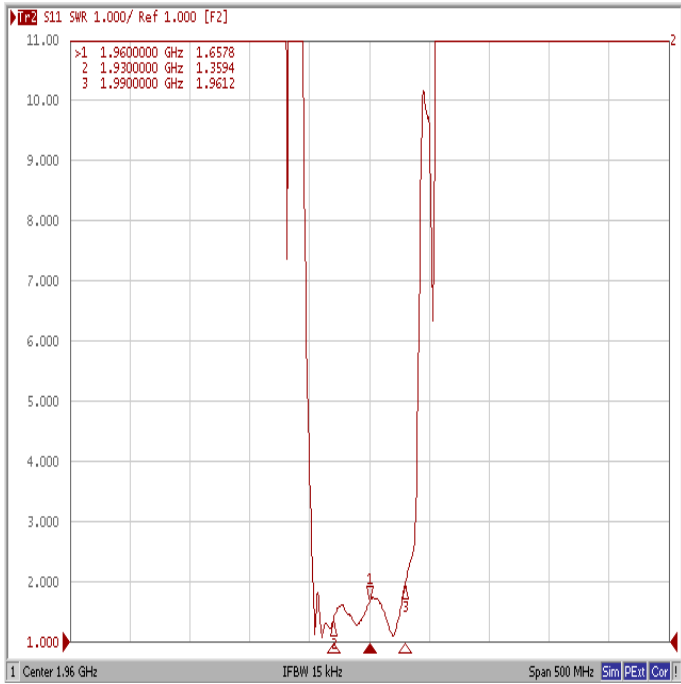
Source & Load Impedance: 50 Ω

□ Frequency Characteristics

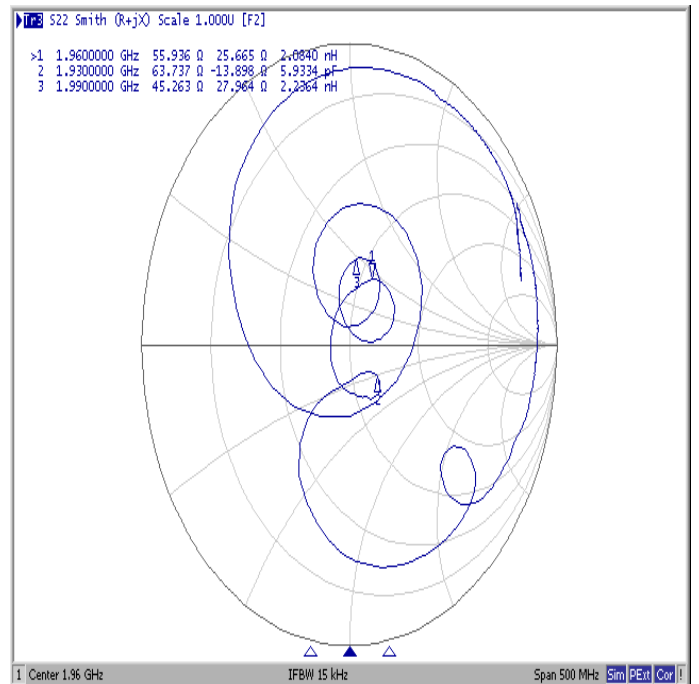
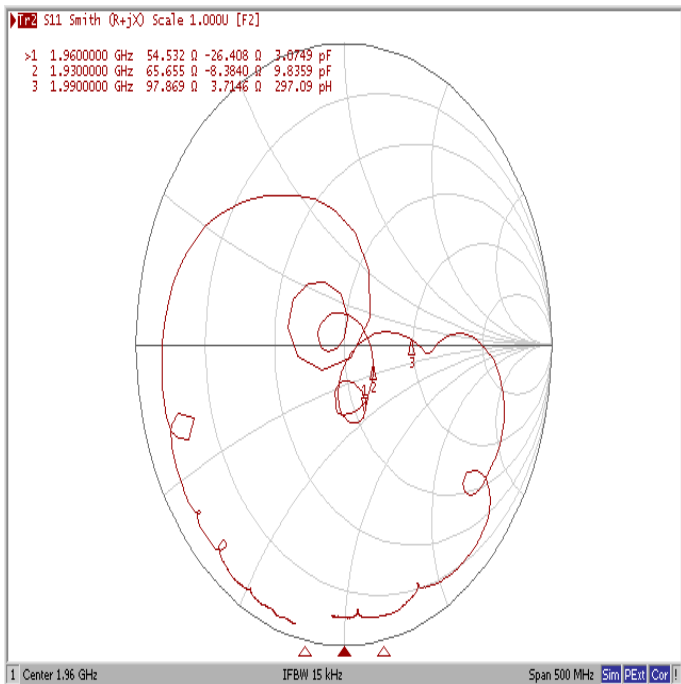
Frequency Response



VSWR



Smith Chart



X-ON Electronics

Largest Supplier of Electrical and Electronic Components

Click to view similar products for [Signal Conditioning](#) category:

Click to view products by [Suntek](#) manufacturer:

Other Similar products are found below :

[MAPDCC0001](#) [MAPDCC0004](#) [PD0409J5050S2HF](#) [HHS-109-PIN](#) [AFS14A30-2185.00-T3](#) [AFS14A35-1591.50-T3](#) [DS-323-PIN](#) [DSS-313-PIN](#) [B39321R801H210](#) [1A0220-3](#) [JP510S](#) [LFB212G45SG8C341](#) [LFB322G45SN1A504](#) [LFL182G45TC3B746](#) [SF2159E](#) [30057](#)
[AFS1575.42S4-T](#) [FM-104-PIN](#) [CER0813B](#) [MAPDCC0005](#) [3A325](#) [40287](#) [41180](#) [ATB3225-75032NCT](#) [BD0810N50100AHF](#) [JHS-115-PIN](#)
[DC0710J5005AHF](#) [DC2327J5005AHF](#) [43020](#) [LFB2H2G60BB1C106](#) [LFL15869MTC1B787](#) [X3C19F1-20S](#) [XC3500P-20S](#) [10013-20](#)
[SF2194E](#) [CDBLB455KCAX39-B0](#) [TGL2208-SM, EVAL](#) [RF1353C](#) [051157-0000](#) [PD0922J5050D2HF](#) [1E1305-3](#) [1F1304-3S](#) [1G1304-30](#)
[B0922J7575AHF](#) [10017-3](#) [TP-103-PIN](#) [BD1222J50200AHF](#) [BD1722J50100AHF](#) [2450DP39K5400E](#) [BD0810J50150AHF](#)