



SK3410

Band41, RF SAW Filter
Revision 0 : January 2017

MSL 3 Device



- Electrical Characteristics
 - Package Dimensions
 - Testing Environment
 - Frequency Characteristics
-

□ Electrical Characteristics

Maximum Ratings

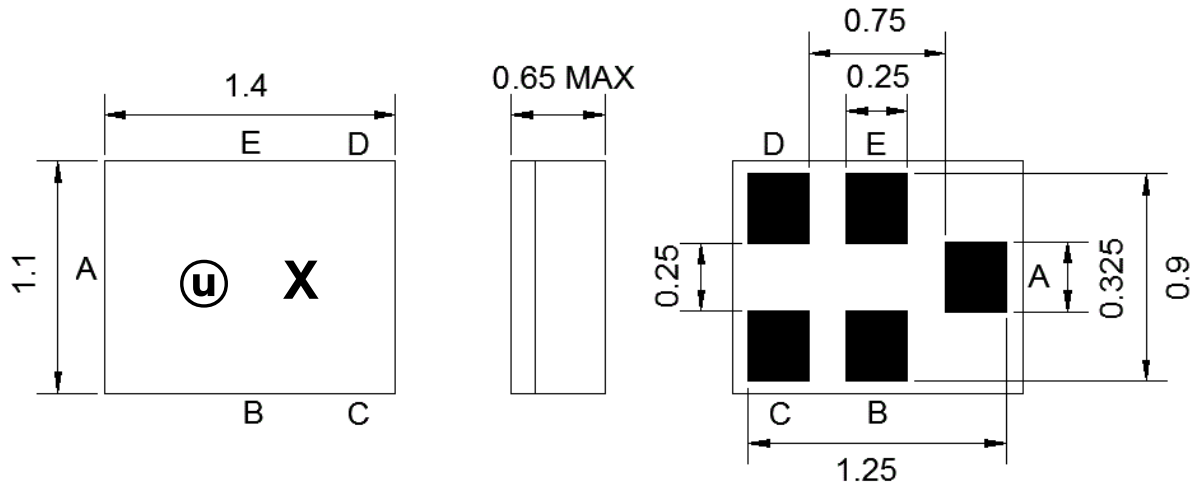
Parameters Description	Unit	Minimum	Typical	Maximum
Operating Temperature Range	°C	-20	-	+85
Storage Temperature Range	°C	-40	-	+85
Maximum DC Voltage	V	3V (25±2 deg.C)		
Maximum Input Power	dBm	28.5dBm, 5000h 55 deg.C		
Source Impedance (Unbalance) ⁽¹⁾	Ω	-	50	-
Load Impedance (Unbalance) ⁽¹⁾	Ω	-	50	-
Package type & size	C24			
Length x Width	mm ²	-	1.4 x 1.1	-
Height	mm	-	-	0.65

Electrical Specification

Parameters Description	Unit	Minimum	Typical	Maximum	Remarks
Center Frequency (Fo)	MHz	-	2605.0	-	-
Insertion Loss within 2555.0 ~ 2575.0 MHz	dB	-	2.4	4.0	-
2575.0 ~ 2635.0 MHz	dB	-	1.6	2.5	-
2635.0 ~ 2655.0 MHz	dB	-	1.3	2.5	-
Amplitude Ripple within 2555.0 ~ 2655.0 MHz	dB _{p-p}	-	1.5	2.8	-
Attenuation:					
10.0 ~ 960.0 MHz	dB	40	52	-	-
1225.0 ~ 1559.0 MHz	dB	30	39	-	-
1559.0 ~ 1606.0 MHz	dB	30	38	-	-
1606.0 ~ 1710.0 MHz	dB	30	35	-	-
1710.0 ~ 2170.0 MHz	dB	27	31	-	-
2170.0 ~ 2400.0 MHz	dB	27	31	-	-
2401.0 ~ 2438.0 MHz	dB	33	36	-	-
2421.0 ~ 2483.0 MHz	dB	35	37	-	-
2750.0 ~ 4900.0 MHz	dB	30	34	-	-
4900.0 ~ 6000.0 MHz	dB	30	36	-	-
6000.0 ~ 8000.0 MHz	dB	25	35	-	-
VSWR within 2555.0 ~ 2655.0 MHz	-	-	1.7	2.2	-

Notes : (1) With Matching Network (Ref. Testing Environment Circuit as shown below).

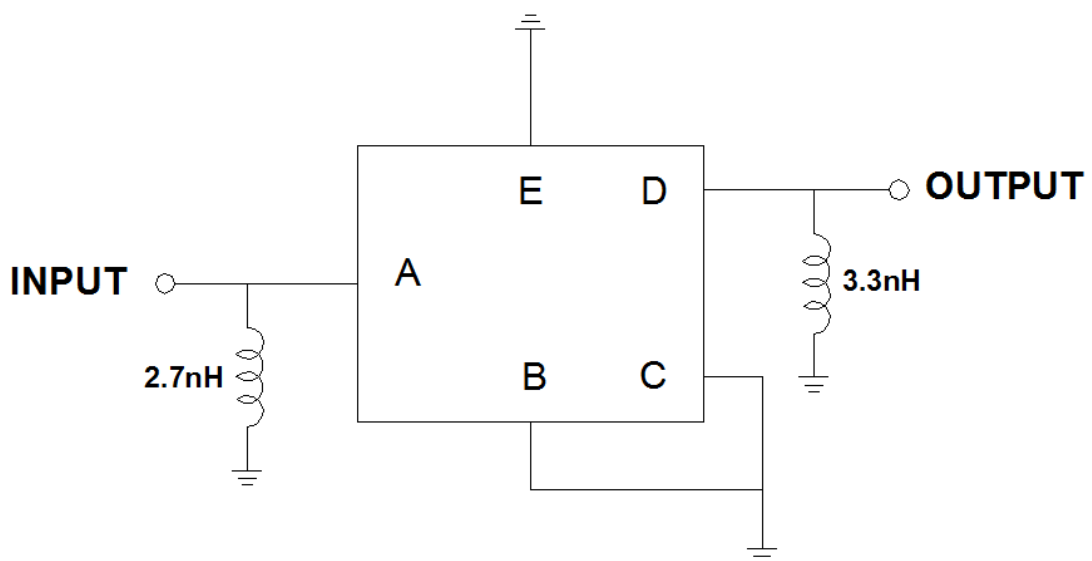
□ Package Dimensions



Marking Descriptions	
Ⓢ	Series Number
X	Date Code(Year+Month)

Pin Description	
B, C, E	Ground
A	Input
D	Output

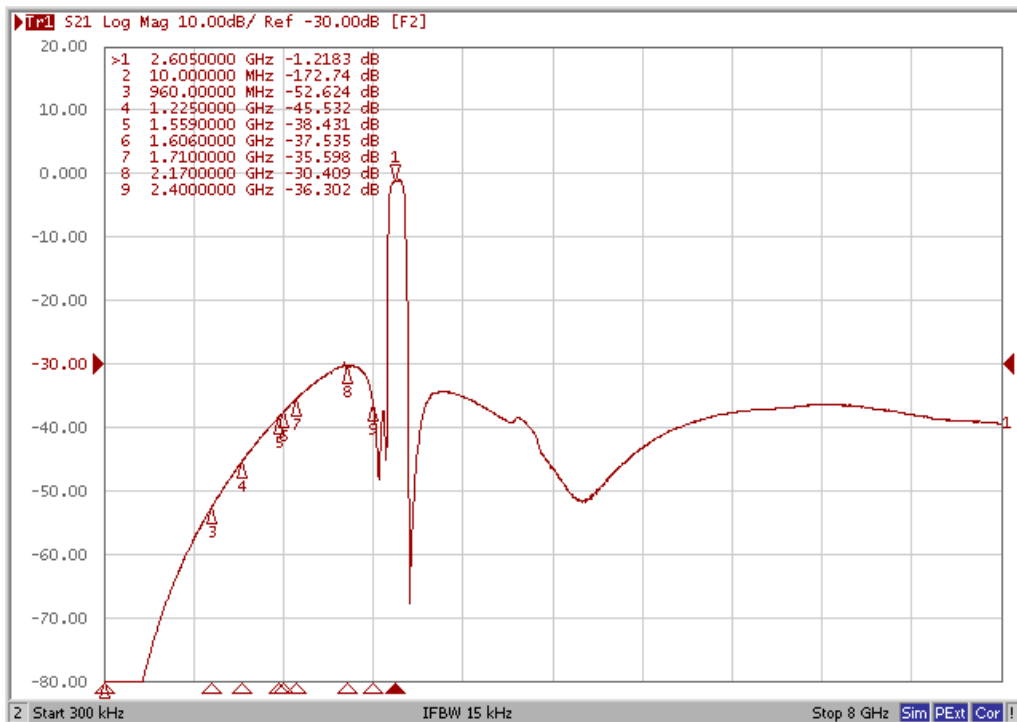
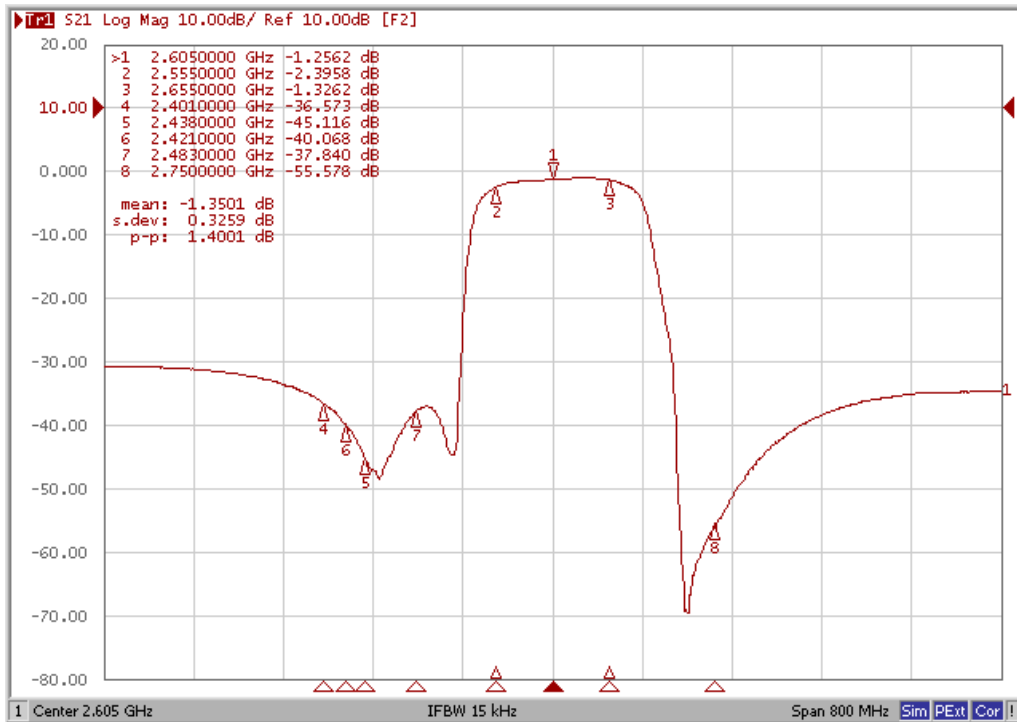
□ Testing Environment



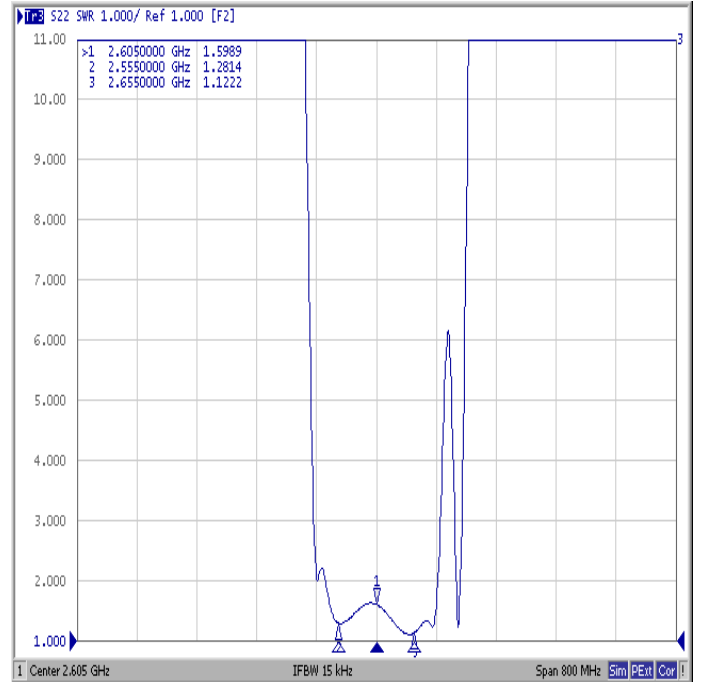
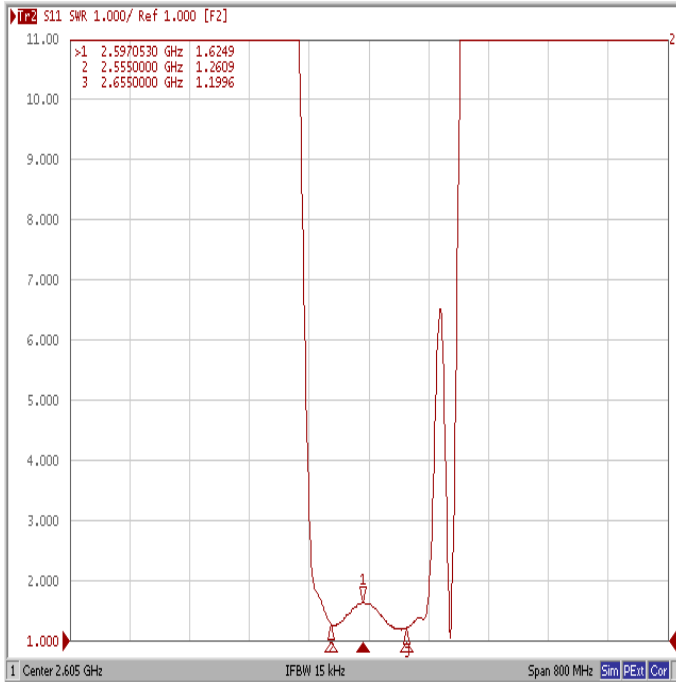
Source & Load Impedance: 50 Ω

□ Frequency Characteristics

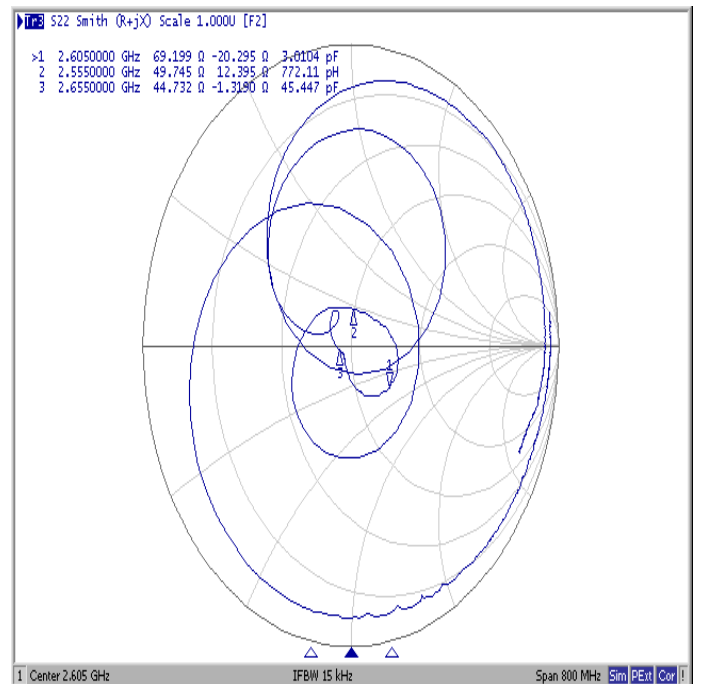
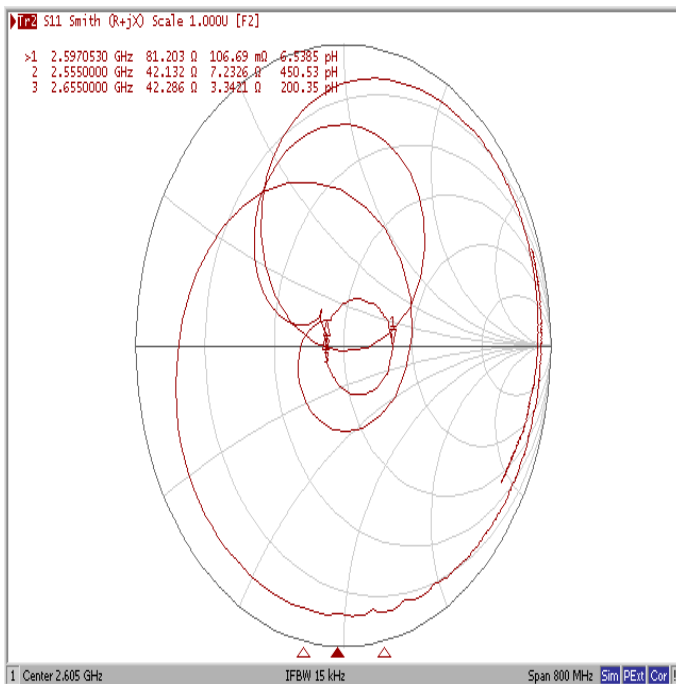
Frequency Response



VSWR



Smith Chart



X-ON Electronics

Largest Supplier of Electrical and Electronic Components

Click to view similar products for [Signal Conditioning](#) category:

Click to view products by [Suntek](#) manufacturer:

Other Similar products are found below :

[MAPDCC0001](#) [MAPDCC0004](#) [PD0409J5050S2HF](#) [HHS-109-PIN](#) [AFS14A35-1591.50-T3](#) [DS-323-PIN](#) [1A0220-3](#) [JP510S](#)
[LFB212G45SG8C341](#) [LFB322G45SN1A504](#) [LFL182G45TC3B746](#) [SF2159E](#) [30057](#) [AFS1575.42S4-T](#) [FM-104-PIN](#) [CER0813B](#)
[MAPDCC0005](#) [3A325](#) [40287](#) [ATB3225-75032NCT](#) [BD0810N50100AHF](#) [JHS-115-PIN](#) [DC0710J5005AHF](#) [DC2327J5005AHF](#) [43020](#)
[LFB2H2G60BB1C106](#) [LFL15869MTC1B787](#) [X3C19F1-20S](#) [XC3500P-20S](#) [10013-20](#) [SF2194E](#) [CDBLB455KCAX39-B0](#) [RF1353C](#)
[051157-0000](#) [PD0922J5050D2HF](#) [1E1305-3](#) [1F1304-3S](#) [1G1304-30](#) [B0922J7575AHF](#) [10017-3](#) [TP-103-PIN](#) [BD1222J50200AHF](#)
[BD1722J50100AHF](#) [2450DP39K5400E](#) [BD0810J50150AHF](#) [BD1722J50200AHF](#) [DSS-113-PIN](#) [DS-327-PIN](#) [MACP-008125-CK07F0](#) [DS-329-PIN](#)