

# SK6218

## 300mA Low Power LDO

### General Description

SK6218 series are a highly precise, lower consumption, 3 terminal, positive voltage regulators manufactured using CMOS and laser trimming technologies. The series provides large currents with a significantly small dropout voltage. The SK6218 consists of a current limiter circuit, a driver transistor, a precision reference voltage and an error correction circuit. The series is compatible with low ESR ceramic capacitors. The current limiter's foldback circuit operates as a short circuit protection as well as the output current limiter for the output pin. Output voltages are internally by laser trimming technologies. It is selectable in 0.1V increments within a range of 1.8V to 3.6V. SK6218 series are available in SOT-23 package.

### Features

- Low power consumption
- Low voltage drop
- Low temperature coefficient
- Low Quiescent Current: 5uA at 6V
- Output voltage accuracy: tolerance  $\pm 2\%$

### Applications

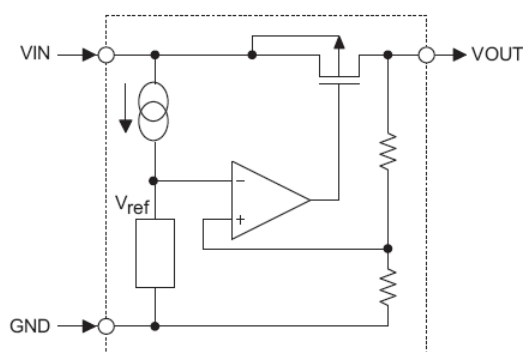
- Battery-powered equipment
- Reference voltage sources
- Cameras, video cameras
- Portable AV systems
- Mobile phones
- Portable games

### Ordering Information

Order Number	Package	Temperature	RoHS	Shipping Type
SK6218-XXNR	SOT23	-40°C to +85°C	YES	3000PCS/REEL

Note:"XX" stands for output voltages within a range of 1.8V to 3.6V.

### Block Diagram



## Pin Assignment

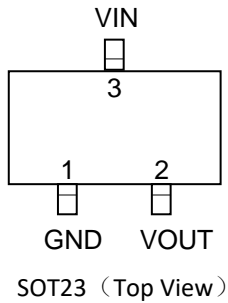
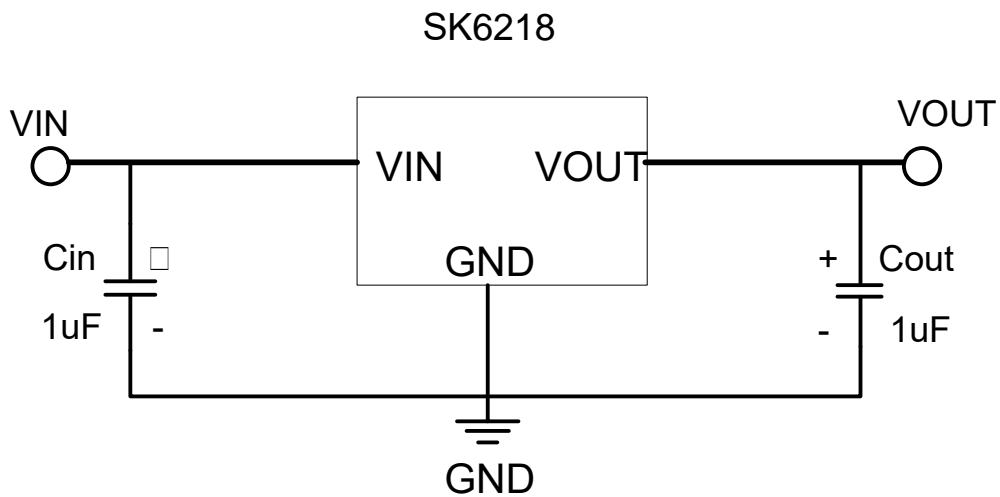


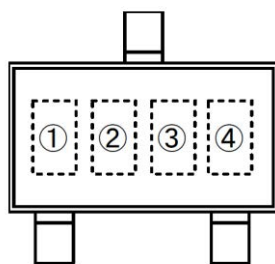
Table1: SK6218 series (SOT23 PKG)

PIN NO.	PIN NAME	FUNCTION
1	GND	GND pin
2	VOUT	Output voltage pin
3	VIN	Input voltage pin

## Typical Application



## Marking Rule



SOT-23  
(TOP VIEW)

① represents product number

MARK	PRODUCT SERIES
6	SK6218

② represents 3 pins regulator

MARK		PRODUCT SERIES
VOLTAGE=0.1~3.0V	VOLTAGE=3.1V~6.0V	
5	6	SK6218

③ represents output voltage

MARK	VOLTAGE(V)			MARK	VOLTAGE(V)		
0	-	3.1	-	F	1.6	4.6	-
1	-	3.2	-	H	1.7	4.7	-
2	-	3.3	-	K	1.8	4.8	-
3	-	3.4	-	L	1.9	4.9	-
4	-	3.5	-	M	2.0	5.0	-
5	-	3.6	-	N	2.1	-	-
6	-	3.7	-	P	2.2	-	-
7	-	3.8	-	R	2.3	-	-
8	-	3.9	-	S	2.4	-	-
9	-	4.0	-	T	2.5	-	-
A	-	4.1	-	U	2.6	-	-
B	1.2	4.2	-	V	2.7	-	-
C	1.3	4.3	-	X	2.8	-	-
D	1.4	4.4	-	Y	2.9	-	-
E	1.5	4.5	-	Z	3.0	-	-

④ Z

## Absolute Maximum Ratings

Parameter	Symbol	Ratings	Units
Input Voltage	V <sub>IN</sub>	8	V
Output Current	I <sub>OUT</sub>	300*	mA
Output Voltage	V <sub>OUT</sub>	V <sub>SS</sub> -0.3~V <sub>IN</sub> +0.3	V
Power Dissipation	SOT-23 P <sub>d</sub>	0.20	W
Operating Temperature Range	T <sub>opr</sub>	-40~+85	°C
Storage Temperature Range	T <sub>stg</sub>	-55~+125	°C

$$*I_{OUT}=P_d/(V_{IN}-V_{OUT})$$

## Electrical Characteristics

SK6218 for any output voltage

(T<sub>a</sub>=25°C)

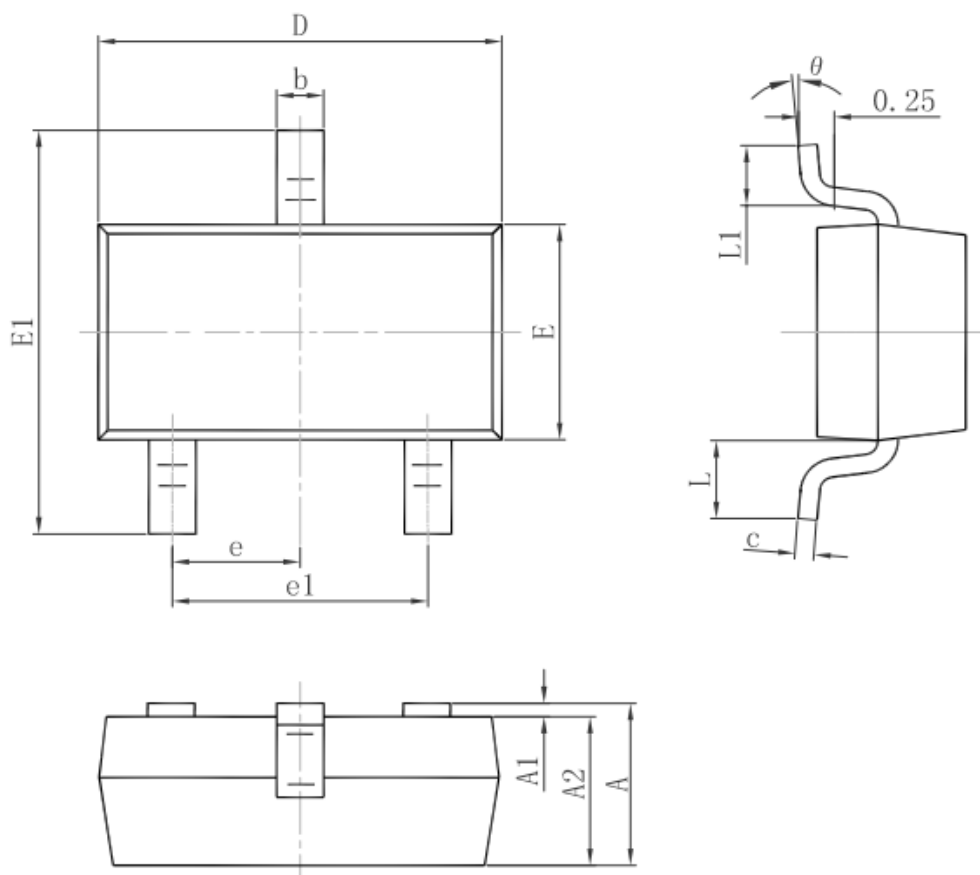
Parameter	Symbol	Conditions	Min.	Typ.	Max.	Unit
Output Voltage	V <sub>out</sub>	V <sub>in</sub> =V <sub>out</sub> +1V 1.0mA≤I <sub>out</sub> ≤30mA	V <sub>out</sub> ×0.98	--	V <sub>out</sub> ×1.02	V
Output Current*1	I <sub>out</sub>	V <sub>in</sub> -V <sub>out</sub> =1V	--	300	--	mA
Low dropout*2	V <sub>drop</sub>	Refer to the next table				
Line Regulation	Δ V <sub>out</sub> 1/(V <sub>in</sub> -V <sub>out</sub> )	1.6V≤V <sub>in</sub> ≤8V I <sub>out</sub> =40mA	--	0.05	0.2	%/V
Load Regulation	Δ V <sub>out</sub> / ΔI <sub>out</sub>	V <sub>in</sub> = V <sub>out</sub> +1V 1.0mA≤I <sub>out</sub> ≤80mA	--	12	30	mV
Output voltage Temperature Coefficiency	Δ V <sub>out</sub> /(T <sub>a</sub> -V <sub>out</sub> )	I <sub>out</sub> =30mA 0°C≤T <sub>a</sub> ≤70°C	--	±100	--	Ppm/°C
Supply Current	I <sub>ss</sub>	--	--	5	10	uA
Input Voltage	V <sub>in</sub>	--	--	6	8	V
PSRR	PSRR	F=1KHz V <sub>in</sub> =V <sub>out</sub> +1V	--	50	--	dB
Output Noise	EN	BW=10Hz~100KHz	--	30	--	uVrms

Electrical Characteristics by Output Voltage:

Output Voltage V <sub>out</sub> (V)	Dropout Voltage V <sub>dif</sub> (V)		
	Conditions	Typ.	Max.
V <sub>out</sub> ≤1.5V	I <sub>out</sub> =100 mA	0.50	0.68
1.8 ≤ V <sub>out</sub> ≤ 2		0.39	0.53
2.8 ≤ V <sub>out</sub> ≤ 5.0		0.28	0.39

## Package Information

### 3-pin SOT23 Outline Dimensions



Symbol	Dimensions In Millimeters		Dimensions In Inches	
	Min.	Max.	Min.	Max.
A	0.900	1.150	0.035	0.045
A1	0.000	0.100	0.000	0.004
A2	0.900	1.050	0.035	0.041
b	0.300	0.500	0.012	0.020
c	0.080	0.150	0.003	0.006
D	2.800	3.000	0.110	0.118
E	1.200	1.400	0.047	0.055
E1	2.250	2.550	0.089	0.100
e	0.950 TYP.		0.037 TYP.	
e1	1.800	2.000	0.071	0.079
L	0.550 REF.		0.022 REF.	
L1	0.300	0.500	0.012	0.020
$\theta$	0°	8°	0°	8°

## X-ON Electronics

Largest Supplier of Electrical and Electronic Components

*Click to view similar products for [Linear Voltage Regulators](#) category:*

*Click to view products by [Suntek](#) manufacturer:*

Other Similar products are found below :

[LV56831P-E](#) [LV5684PVD-XH](#) [MCDTSA6-2R](#) [L7815ACV-DG](#) [PQ3DZ53U](#) [LV56801P-E](#) [TLE42794G](#) [L78L05CZ/1SX](#) [L78LR05DL-MA-E](#) [636416C](#) [714954EB](#) [BA033LBSG2-TR](#) [LV5680P-E](#) [L78M15CV-DG](#) [L79M05T-E](#) [TLS202A1MBVHTSA1](#) [L78LR05D-MA-E](#) [NCV317MBTG](#) [NTE7227](#) [LV5680NPVC-XH](#) [LT1054CN8](#) [MP2018GZD-5-Z](#) [MP2018GZD-33-Z](#) [MIC5281-3.3YMM](#) [MC78L06BP-AP](#) [TA48LS05F\(TE85L,F\)](#) [TA78L12F\(TE12L,F\)](#) [TC47BR5003ECT](#) [TCR2LN12,LF\(S](#) [TCR2LN28,LF\(S](#) [TCR2LN30,LF\(S](#) [TCR3DF295,LM\(CT](#) [TCR3DF40,LM\(CT](#) [BA178M20CP-E2](#) [L78M12ABDT](#) [LM7812SX/NOPB](#) [LR645N3-G-P003](#) [LR645N3-G-P013](#) [ZXTR2005P5-13](#) [SCD7812BTG](#) [TCR3DF335,LM\(CT](#) [ZXTR2012K-13](#) [TLE42994E V33](#) [ZXTR2008K-13](#) [ZXTR2005K-13](#) [L88R05DL-E](#) [ADP3300ARTZ-2.7RL7](#) [LM120K-15/883](#) [IFX54441LDVXUMA1](#) [LM317D2T-TR](#)