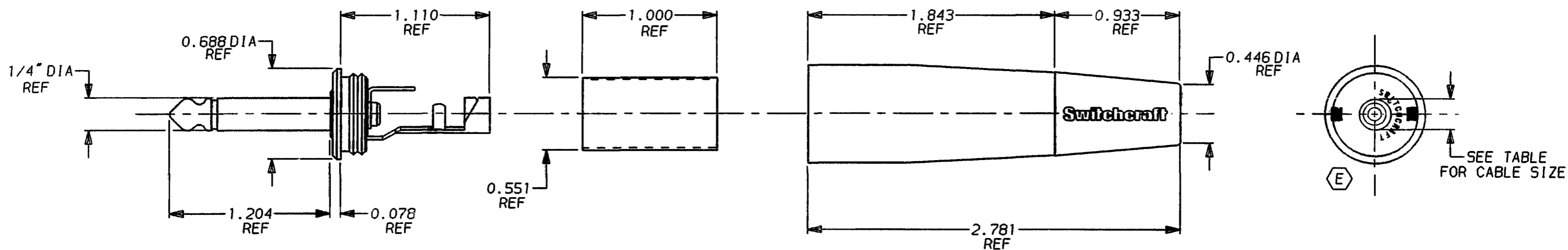
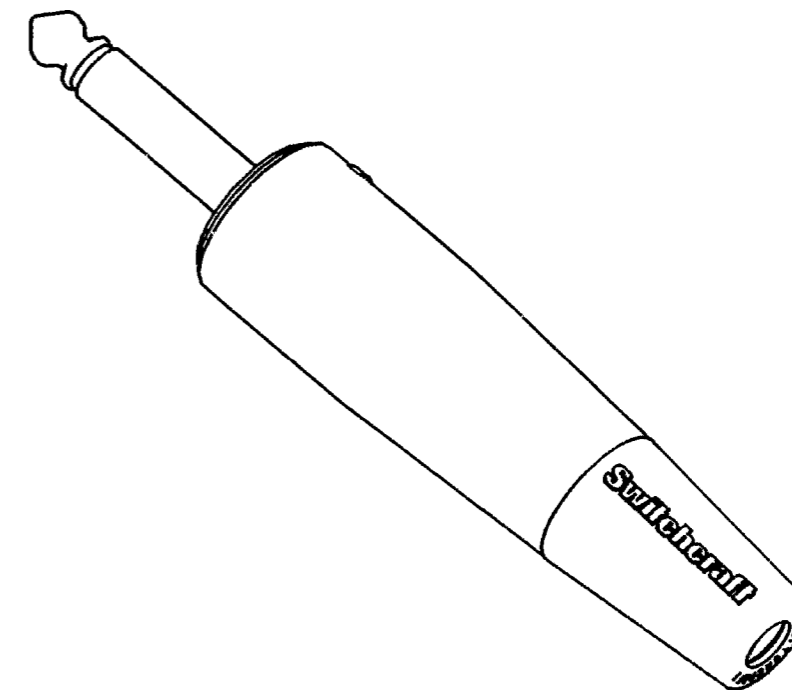


PART NO.	PART REV.	HANDLE FINISH	CABLE SIZES
187D	E	NICKEL PLATE	0.200 TO 0.300 O.D.
187	F	NICKEL PLATE	0.300 TO 0.330 O.D.
187L	D	NICKEL PLATE	0.330 TO 0.355 O.D.
187BD	E	BLACK EPOXY COATING	0.200 TO 0.300 O.D.
187B	H	BLACK EPOXY COATING	0.300 TO 0.330 O.D.
187BL	D	BLACK EPOXY COATING	0.330 TO 0.355 O.D.



PLUG SPECIFICATIONS:

MATERIALS:

CONDUCTORS: BRASS NICKEL PLATED
 INSULATORS: XXXP PHENOLIC, GRADE LE PHENOLIC AND PPO
 TERMINALS: BRASS, ELECTRO TIN PLATED
 MAXIMUM WIRE SIZE: 14 AWG.

INSULATOR SPECIFICATIONS:

MATERIALS: MYLAR

HANDLE AND FLEX RELIEF SPECIFICATIONS:

MATERIALS:
 HANDLE: ZINC (SEE TABLE FOR FINISH)
 FLEX RELIEF: THERMOPLASTIC ELASTOMER

NOTES:

1. PLUG SUBASSEMBLY AND HANDLE SUBASSEMBLY ARE PACKED SEPARATELY IN THE SAME CONTAINER.

CUSTOMER DRAWING

CAD/CAM DWG. NO. 187.CD

SHEET 1 OF 1

★ STAR SYMBOL DENOTES CRITICAL DIMENSION, SEE S/C ENGINEERING STANDARD ES-0001					THIS DRAWING DESCRIBES A DESIGN CONSIDERED PROPRIETARY IN NATURE, DEVELOPED AND MANUFACTURED BY SWITCHCRAFT INC. AND IS RELEASED ON A CONFIDENTIAL BASIS FOR IDENTIFICATION PURPOSE ONLY.				
UNLESS OTHERWISE SPECIFIED					SIZE	WIDTH	MULT	LBS./IN	TEMPER
E	ECO #20751	3-22-96	RC	KS	FINISH				MATERIAL
D	ECO #20697	3-22-96	RC	KS	SPEC. NO.				SPEC. NO.
C	ECO #20627	3-22-96	RC	KS	FIRST USED ON				SCALE
B	ECO #20063	3-19-96	RC	KS	DATE DRAWN				BY
A	FIRST DRAWN	9-9-92	LR	GHJ	9-9-92				CHK'D
ISSUE	CHANGE NO.	DATE	BY	APP'D	9-17-92				APP'D
REVISIONS					PHONE PLUGS				
DO NOT SCALE DRAWING					PART NO. 187 SERIES E				



X-ON Electronics

Largest Supplier of Electrical and Electronic Components

Click to view similar products for [Phone Connectors](#) category:

Click to view products by [Switchcraft](#) manufacturer:

Other Similar products are found below :

[M444B](#) [6J1041A](#) [R4F](#) [128PKG](#) [RJ3VI](#) [RJ3VI-S](#) [RJ5VI](#) [E12BPKG](#) [ECP4PKG](#) [161-3300N-EX](#) [161-3502L-E](#) [161-7900HS-EX](#) [163-157J-E](#)
[MT333X](#) [171-0350-EX](#) [171-105AC-EX](#) [171-3325-EX](#) [171-6435-EX](#) [176S](#) [NC3MG-V](#) [NMJ4HFD2-NW](#) [NP2RX-AU-SILENT-D](#) [NP2X-L-](#)
[D](#) [NRJ4HH-1](#) [NS112BX](#) [NYS228G](#) [NYS352AG](#) [P10834](#) [P2380](#) [P2381X](#) [P2411X](#) [P2412](#) [P2724](#) [9144](#) [S2674](#) [163-156N-2-E](#) [163-158N-2-](#)
[E](#) [171-0250-EX](#) [171-3308-EX](#) [171-3500-E](#) [171-PA3191-2-E](#) [ST-3141-5N](#) [229](#) [2501FT](#) [CMT335](#) [M10662](#) [330Q](#) [RJ5VI-S](#) [40116](#) [TM1R-](#)
[AU](#)