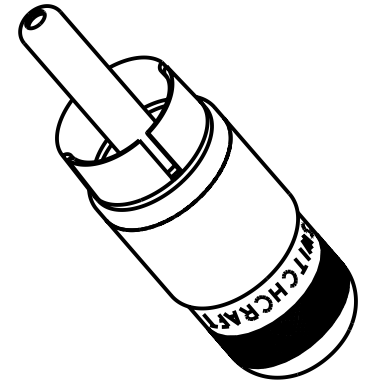
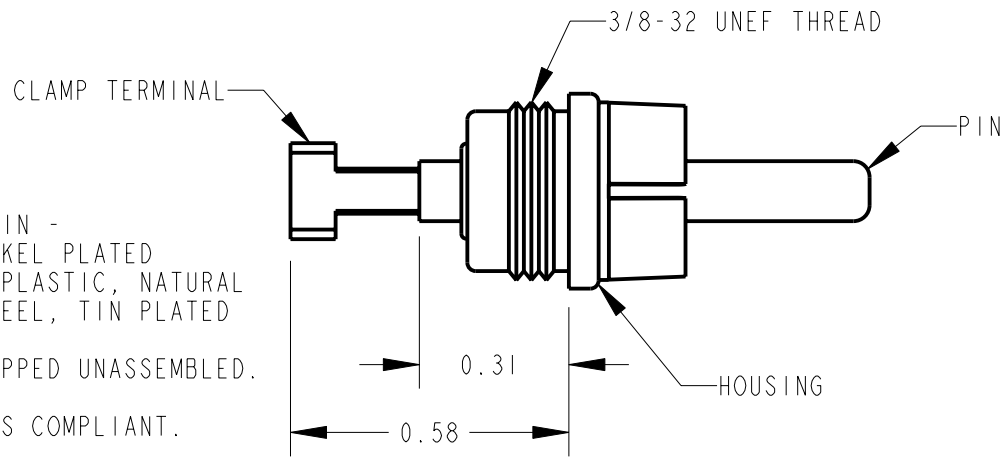
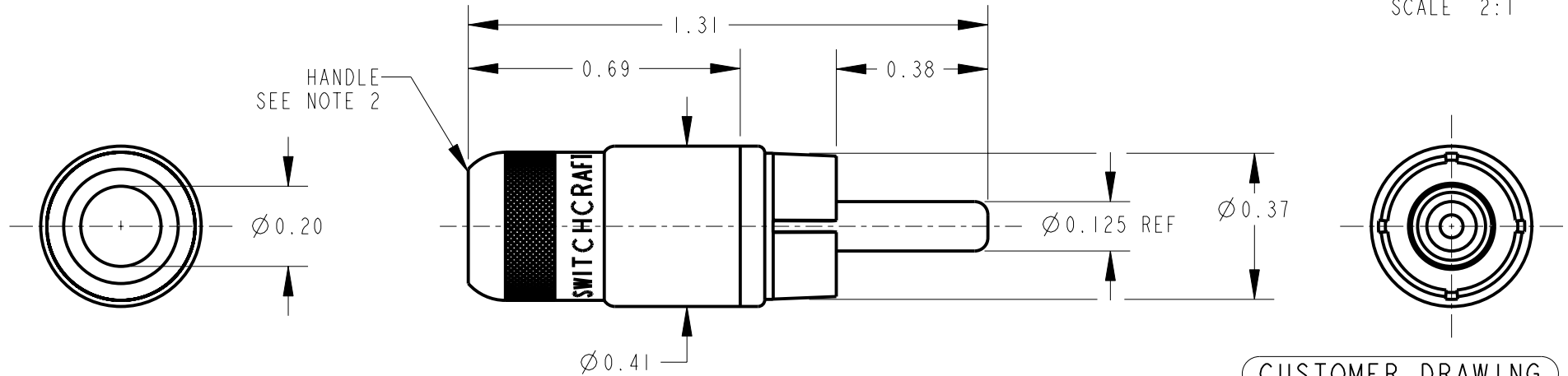


NOTES:

1. MATERIALS:  
HANDLE, HOUSING & PIN -  
COPPER ALLOY, NICKEL PLATED  
INSULATORS - THERMOPLASTIC, NATURAL  
CLAMP TERMINAL - STEEL, TIN PLATED
2. K221 HANDLE KIT SHIPPED UNASSEMBLED.
3. THIS PRODUCT IS RoHS COMPLIANT.



SCALE 2:1



CUSTOMER DRAWING

★ STAR SYMBOL DENOTES CRITICAL DIMENSION

THIS DRAWING DESCRIBES A DESIGN CONSIDERED PROPRIETARY IN NATURE, DEVELOPED AND MANUFACTURED BY SWITCHCRAFT INC. AND IS RELEASED ON A CONFIDENTIAL BASIS FOR IDENTIFICATION PURPOSES ONLY.

UNLESS OTHERWISE SPECIFIED

SIZE	WIDTH	MULT	LBS/M	TEMPER
------	-------	------	-------	--------

1. ALL DIMENSIONS IN INCHES  
- TWO PLACE DECIMALS ±0.01  
- THREE PLACE DECIMALS ±0.005  
- ANGLES ±1°  
- ALL DIA. CONCENTRIC WITHIN 0.005 T.I.R.

FINISH	MATERIAL
SPEC No.	SPEC No.

2. FEATURES ON THE SAME CENTERLINE MUST BE ALIGNED WITHIN ±0.002

FIRST USED ON	SCALE
	5:2

**Switchcraft®**

E	27141 REDRAWN	5-7-13	TO	TJK
---	---------------	--------	----	-----

DATE DRAWN	BY	CHKD	APVD
16-Apr-13	TO	TO	TJK
		4-16-13	4-16-13

SHEET	OF
-------	----

REV	ECO NUMBER	DATE	BY	APVD
-----	------------	------	----	------

NAME	PART No.	REV
------	----------	-----

REVISIONS

DO NOT SCALE DRAWING

PHONO PLUG ASSEMBLY, RoHS

3507

E

## X-ON Electronics

Largest Supplier of Electrical and Electronic Components

*Click to view similar products for [RCA Phono Connectors](#) category:*

*Click to view products by [Switchcraft](#) manufacturer:*

Other Similar products are found below :

[16PJ035](#) [16PJ092-E](#) [16PJ092R-E](#) [174-0151-E](#) [174-0153-E](#) [174-4357-E](#) [174-4358-E](#) [174-4359-E](#) [17PP052](#) [280L](#) [174-0254-E](#) [174-4356-E](#)  
[17PP058](#) [333-0000](#) [343-0500](#) [RCA I.D. RED](#) [54B](#) [330F3](#) [336AX](#) [342-0000](#) [AP-165](#) [598](#) [AX101880](#) [16PJ150](#) [716SNS1P11PL-25](#) [585](#) [330-](#)  
[0000](#) [341-0000](#) [588](#) [431-0100](#) [171-ADRJRJ-E](#) [171-ADRPRP-E](#) [174-0154-E](#) [NYS355](#) [19-1268](#) [PJRAN1X1U01AUX](#) [ACJD-BLK](#) [553-0400](#)  
[553-0200](#) [NF2D-2](#) [NF2D-6](#) [NF2D-9](#) [NF2D-B-0](#) [NF2D-B-4](#) [NF2D-B-5](#) [299](#) [ACJB-BLK](#) [ACJD-BLU](#) [ACJD-RED](#) [ACJD-WHT](#) [ACJD-](#)  
[YEL](#)