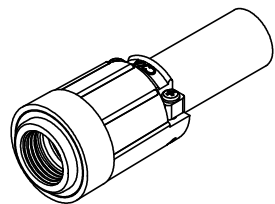
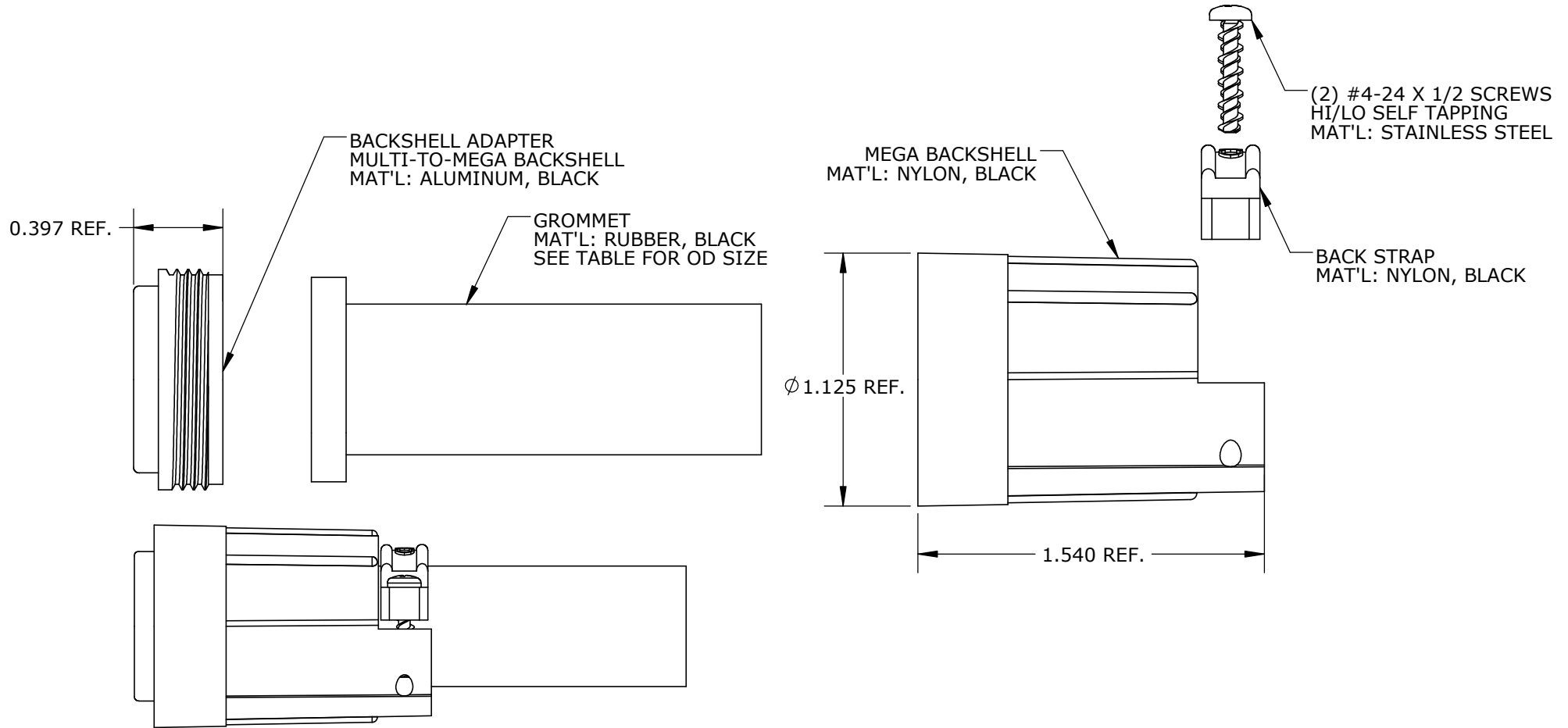


PART NUMBER: 4284-5XXAD-KIT

CUSTOMER PRINT

KIT PART NO.	GROMMET SIZE TO FIT CABLE O.D.
4284-542AD-KIT	0.400-0.430 [10.2-10.9mm]
4284-556AD-KIT	0.540-0.570 [13.7-14.5mm]

NOTES:
 1. FINISHED PRODUCT INDIVIDUALLY PACKAGED IN A POLY BAG



RoHS COMPLIANT

CUSTOMER APPROVAL

THIS DOCUMENT CONTAINS CONFIDENTIAL INFORMATION PROPRIETARY TO CONXALL CORPORATION. ANY REPRODUCTION, DISCLOSURE, OR USE OF THIS DOCUMENT /INFORMATION IS EXPRESSLY PROHIBITED UNLESS AUTHORIZED IN WRITING BY CONXALL CORPORATION.

APPROVED BY: _____
 DATE: _____

A	KU	1/17/22	DRAWING RELEASED PER DOR 21-109450JS								
REV.	INIT.	DATE	DESCRIPTION								
<small>ALL INFORMATION ILLUSTRATED IS THE PROPERTY OF "CONXALL CORPORATION." UNAUTHORIZED DUPLICATION OR DISTRIBUTION OF THIS DOCUMENT IS PROHIBITED.</small>			<small>ORIG. DRAWN BY:</small> KU	<small>DATE:</small> 10/14/21	 <small>601 E. WILDWOOD VILLA PARK, IL 60181</small>						
<small>ALL UNITS ARE IN FEET, INCHES, FRACTION OF INCHES AND DECIMALS.</small> <small>UNLESS OTHERWISE SPECIFIED TOLERANCES:</small> <small>3 PLACE DECIMALS ±.005</small> <small>ANGLES ±1°</small> <small>FRACTIONS ±1/16</small> <small>☐ = CRITICAL CHARACTERISTIC FLAG PER SPEC. XXXX</small>			<small>CHECKED BY:</small> <small>APPROVED BY:</small> <table border="1" style="font-size: small;"> <tr> <th>SCALE</th> <th>SIZE</th> <th>SHEET</th> </tr> <tr> <td>NTS</td> <td>A</td> <td>1 OF 1</td> </tr> </table>			SCALE	SIZE	SHEET	NTS	A	1 OF 1
SCALE	SIZE	SHEET									
NTS	A	1 OF 1									
<small>FILE:</small> 4284-5XXAD-KIT			<small>DIRECTORY:</small> SLW	<small>PART NUMBER:</small> 4284-5XXAD-KIT	<small>REV</small> A						

X-ON Electronics

Largest Supplier of Electrical and Electronic Components

Click to view similar products for [Circular MIL Spec Backshells](#) category:

Click to view products by [Switchcraft](#) manufacturer:

Other Similar products are found below :

[5M2919-3DW](#) [5M2953-1HW](#) [5PTC0023-28C](#) [5PTV7106-AC](#) [5PTV7107-HC](#) [610HS012M15](#) [M28840/805WB](#) [M28840/815WA](#)
[655HS002NF11](#) [CW3899-000](#) [M85049/10-134S](#) [M85049/10-17S](#) [M85049/120-14W](#) [M85049/6-19N](#) [M85049/79-25N04](#) [M85049/81-10](#)
[M85049/85-24P01](#) [M85049/88-19P02](#) [M85049/88-21P02](#) [M85049/89-11P03](#) [M85049/90-11J03](#) [M85049/90-19P02](#) [M85049/92-09T](#) [801-](#)
[005-02Z19-19PA](#) [84030008](#) [8500-2472](#) [900](#) [85202A14](#) [FRCIR020R-16-10P-F80-T108-VO](#) [8D105B02](#) [G8234-24D](#) [1234-258-09228](#) [1234-](#)
[259-19228](#) [1234-206-11192](#) [1234-259-11192](#) [1234-259-21228](#) [1234-279-19228](#) [1234-279-23228](#) [D38999/46WF35SNLC](#) [BACC10HG24C](#)
[BACC10JP22B](#) [189HS011-15053](#) [189HS016NF1907-3](#) [205M520-19C](#) [C8824-3W25](#) [91A3-20-11-1-B-HE200](#) [30-269-1P15F09](#)
[189HS016NF1105-3](#) [189HS016NF2111-3](#) [CF7294-000](#) [290WS003G-1406H3](#)