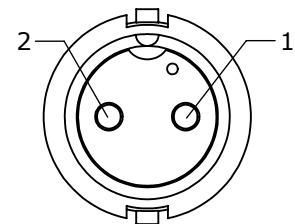


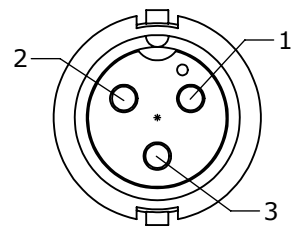
CUSTOMER PRINT

PART NUMBER: 6280-XPG-3XX

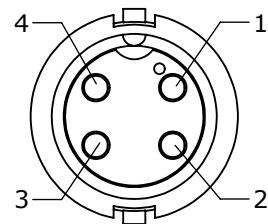
NOTES:
 1. ALL PARTS TO BE BULK PACKED.
 2. ALL DIMENSIONS ARE REFERENCE ONLY.



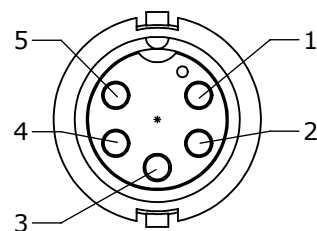
FACE VIEW
6280-2PG-3XX



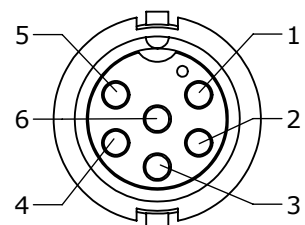
FACE VIEW
6280-3PG-3XX



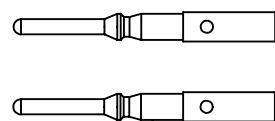
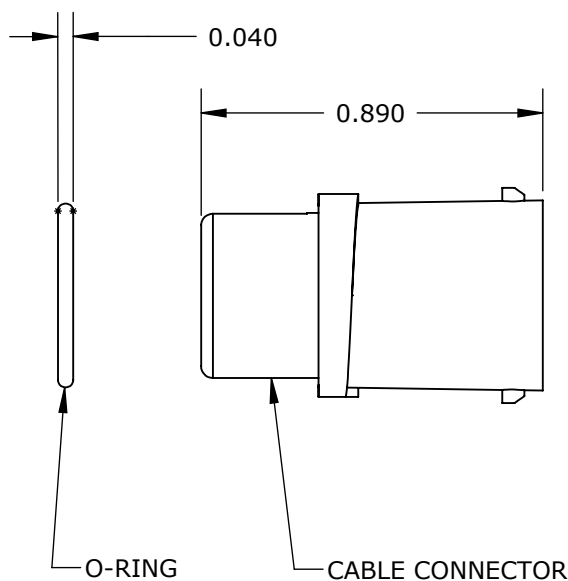
FACE VIEW
6280-4PG-3XX



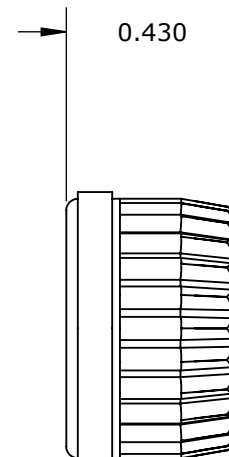
FACE VIEW
6280-5PG-3XX



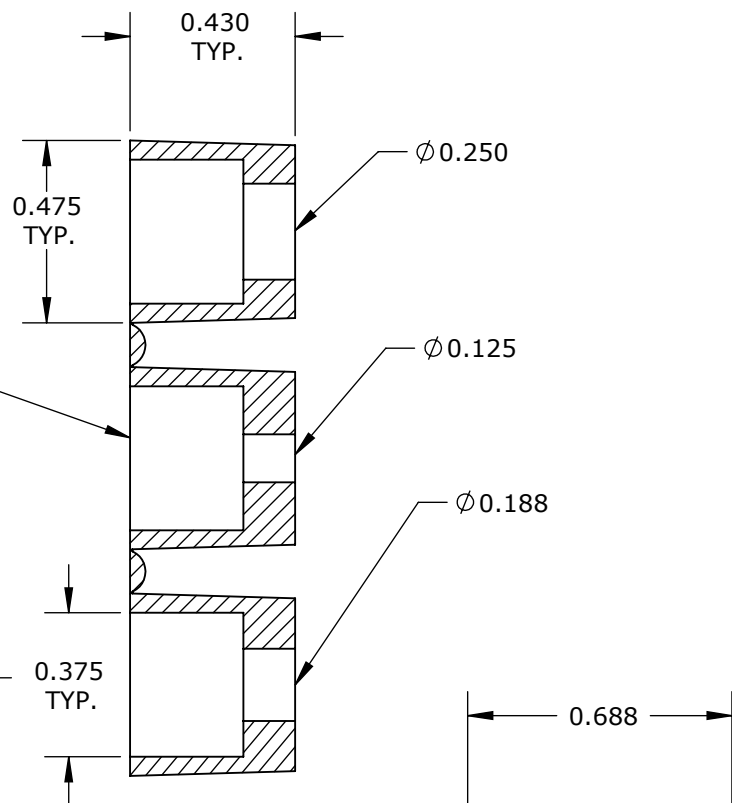
FACE VIEW
6280-6PG-3XX



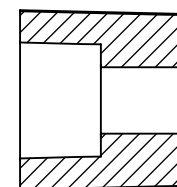
(2-6) #20 PIN CONTACTS



COUPLING RING

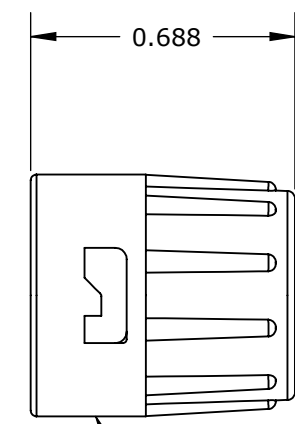


GROMMET, DAISY CHAIN
FOR 6280-XPG-3DC

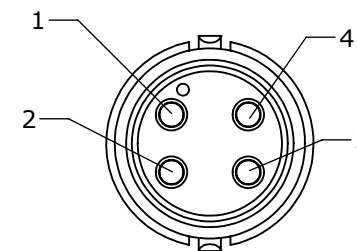


SINGLE GROMMET

6280-XPG-311 .125 I.D. FOR CABLES .09-.14 O.D.
 6280-XPG-315 .188 I.D. FOR CABLES .15-.17 O.D.
 6280-XPG-318 .156 I.D. FOR CABLES .18-.20 O.D.
 6280-XPG-321 .225 I.D. FOR CABLES .21-.23 O.D.



BACKSHELL



WIRE VIEW
6280-4PG-3XX SHOWN

ASSY P/N	NO. OF CONTACTS
6280-2PG-3XX	2 #20
6280-3PG-3XX	3 #20
6280-4PG-3XX	4 #20
6280-5PG-3XX	5 #20
6280-6PG-3XX	6 #20
6280-XPG-3XX	

GROMMET SIZE FOR
SINGLE GROMMET OR
"DC" FOR DAISY CHAIN

NO. OF CONTACTS

ASSY P/N	GROMMET SIZE
6280-XPG-3DC	DAISY CHAIN
6280-XPG-311	CABLE O.D. .09-.14
6280-XPG-315	CABLE O.D. .15-.17
6280-XPG-318	CABLE O.D. .18-.20
6280-XPG-321	CABLE O.D. .21-.23

CUSTOMER APPROVAL

THIS DOCUMENT CONTAINS CONFIDENTIAL INFORMATION PROPRIETARY TO CONXALL CORPORATION. ANY REPRODUCTION, DISCLOSURE, OR USE OF THIS DOCUMENT /INFORMATION IS EXPRESSLY PROHIBITED UNLESS AUTHORIZED IN WRITING BY CONXALL CORPORATION.

APPROVED BY: _____

DATE: _____

REV.	INIT.	DATE	DESCRIPTION
A	BZ	03-26-08	DRAWING CREATED PER DOR 09-1328CM
BZ		03-26-09	

ALL INFORMATION ILLUSTRATED IS THE PROPERTY OF "CONXALL CORPORATION." UNAUTHORIZED DUPLICATION OR DISTRIBUTION OF THIS DOCUMENT IS PROHIBITED.			601 E. WILDWOOD VILLA PARK, IL 60181
ALL UNITS ARE IN FEET, INCHES, FRACTION OF INCHES AND DECIMALS. UNLESS OTHERWISE SPECIFIED TOLERANCES: 3 PLACE DECIMALS ±.005 ANGLES ±1° FRACTIONS ±1/16			
APPROVED BY: _____		TITLE: CONNECTOR ASSEMBLY KIT 2-6 #20 PIN CONTACTS MINI-CON-X	CUSTOMER: STANDARD PRODUCT
SCALE: NTS	SIZE: B	SHEET: 1 OF 1	
FILE: 6280-XPG-3XX	DIRECTORY: SLW	PART NUMBER: 6280-XPG-3XX	REV: A

X-ON Electronics

Largest Supplier of Electrical and Electronic Components

Click to view similar products for [Standard Circular Connector](#) category:

Click to view products by [Switchcraft](#) manufacturer:

Other Similar products are found below :

[5M2530B10P](#) [600259N006](#) [600273N007](#) [6134-336-13149](#) [6134-337-11149](#) [6134-337-2390](#) [6134-341-17149](#) [6280-4SG-516](#) [6280-7SG-3DC](#)
[6290](#) [6291A](#) [66200A-10](#) [680-SMG](#) [681-PMG](#) [CXS3102A14S2P](#) [CXS3102A181S](#) [7251-5SG-300](#) [7271-6SG-300](#) [7282-3PG-300-CH3](#) [75-](#)
[474618-01S](#) [75-474618-04P](#) [75-474618-04S](#) [799539-000](#) [MI8-SE](#) [805-005-07NF11-19PC](#) [805-005-07NF15-7PA](#) [8280-4PG-516](#) [8280-7PG-](#)
[519](#) [8282-5PG-519](#) [836783-1](#) [MP-4102-25P-C](#) [862256-1](#) [864019-2](#) [866857-1](#) [867865-1](#) [PT01SP-14-18P](#) [PT08P-14-5S](#) [PTSF06SE-14-12S](#)
[120-1833-000](#) [QCM019PC2DC012B](#) [1-2069279-1](#) [121583-0217](#) [121667-0020](#) [129591AU](#) [1000B BULK](#) [RD10A16-19-P6CS051/1](#)
[RD10A20-31-P8CS051/1](#) [RD16A14-12-S6CS051/2](#) [1301240290](#) [1301240347](#) [1301860202](#)