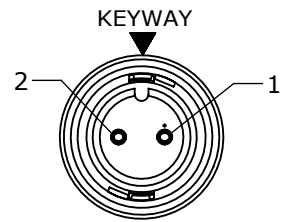


NOTES:

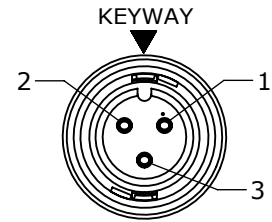
1. FINISHED CABLE ASSEMBLY TO BE COILED
2. OVERMOLD BOOT MATERIAL: PVC, BLACK
3. ELECTRICAL TEST: 100% CONTINUITY

ASS'Y P/N	NO. OF POS.	"X" DIM.
CARA62802S07990	2	6 FT. 7 IN. ±2 IN. [2M]
CARA62803S07990	3	
CARA62804S07990	4	
CARA62805S07990	5	
CARA62806S07990	6	
CARA62807S07990	7	
CARA62808S07990	8	
CARA6280XSXXX90		

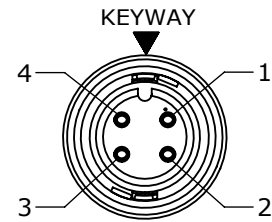
— CABLE LENGTH IN "INCHES"
— NO OF POSITIONS



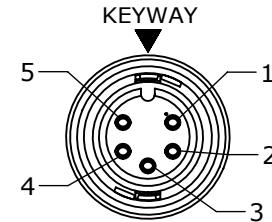
FACE VIEW
P/N: CARA62802SXXX90



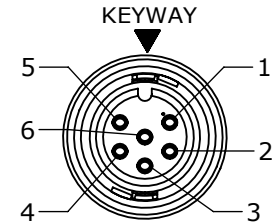
FACE VIEW
P/N: CARA62803SXXX90



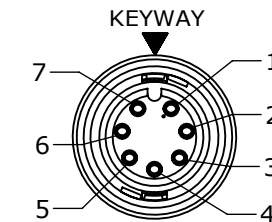
FACE VIEW
P/N: CARA62804SXXX90



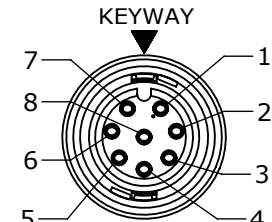
FACE VIEW
P/N: CARA62805SXXX90



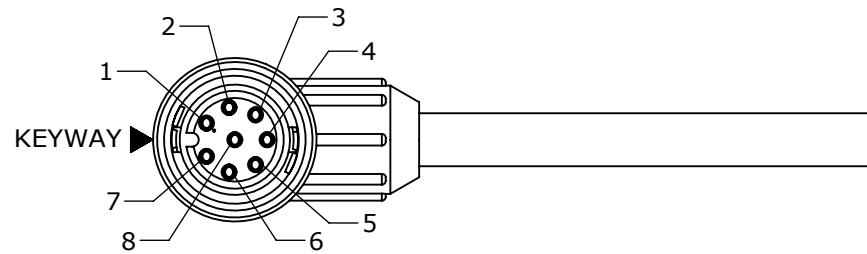
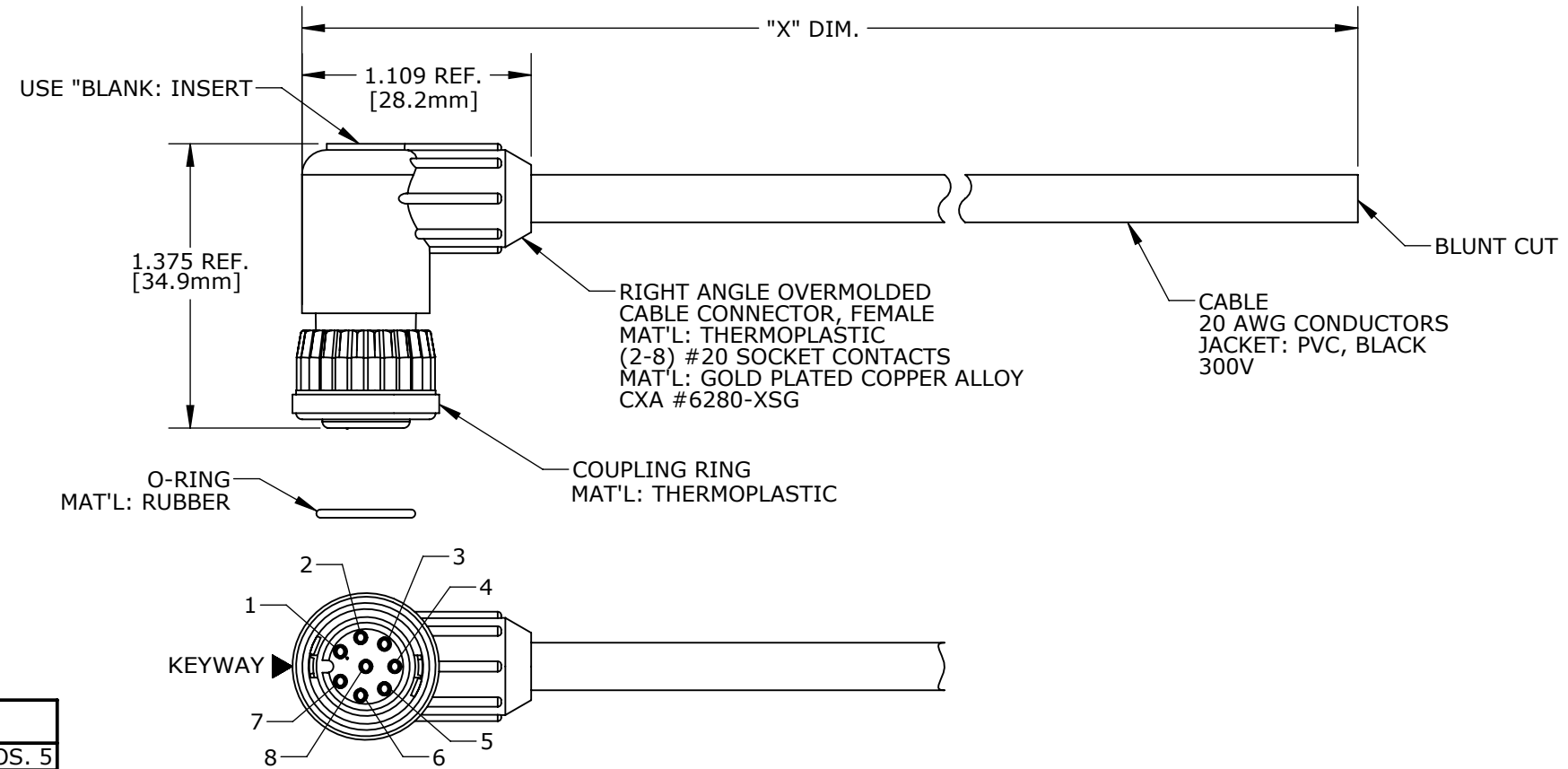
FACE VIEW
P/N: CARA62806SXXX90



FACE VIEW
P/N: CARA62807SXXX90



FACE VIEW
P/N: CARA62808SXXX90



END "A"
FACE VIEW
P/N: CARA62808SXXX90

CUSTOMER APPROVAL

THIS DOCUMENT CONTAINS CONFIDENTIAL INFORMATION PROPRIETARY TO CONXALL CORPORATION. ANY REPRODUCTION, DISCLOSURE, OR USE OF THIS DOCUMENT / INFORMATION IS EXPRESSLY PROHIBITED UNLESS AUTHORIZED IN WRITING BY CONXALL CORPORATION.

APPROVED BY: _____
DATE: _____

ASSY P/N	CABLE	COLOR CODE END "A"
CARA62802SXXX90	2/20 AWG O.D. 0.215 REF	COLOR CODE
		POS. 1 POS. 2 BLK WHT
CARA62803SXXX90	3/20 AWG O.D. 0.220 REF	WIRE COLOR CODE
		POS. 1 POS. 2 POS. 3 BLK WHT GRN
CARA62804SXXX90	4/20 AWG O.D. 0.235 REF	WIRE COLOR CODE
		POS. 1 POS. 2 POS. 3 POS. 4 BLK WHT GRN RED
CARA62805SXXX90	5/20 AWG O.D. 0.255 REF	WIRE COLOR CODE
		POS. 1 POS. 2 POS. 3 POS. 4 POS. 5 BLK WHT GRN RED BLU
CARA62806SXXX90	6/20 AWG O.D. 0.275 REF	WIRE COLOR CODE
		POS. 1 POS. 2 POS. 3 POS. 4 POS. 5 POS. 6 BLK WHT GRN RED BLU VIO
CARA62807SXXX90	8/20 AWG O.D. 0.300 REF	WIRE COLOR CODE
		POS. 1 POS. 2 POS. 3 POS. 4 POS. 5 POS. 6 POS. 7 BLK WHT GRN RED BLU VIO GRY
CARA62808SXXX90	8/20 AWG O.D. 0.300 REF	WIRE COLOR CODE
		POS. 1 POS. 2 POS. 3 POS. 4 POS. 5 POS. 6 POS. 7 POS. 8 BLK WHT GRN RED BLU VIO GRY BRN

DIMENSIONS IN BRACKET [] ARE METRIC.

RoHS COMPLIANT

B	AN	10-27-16	UPDATED MANUFACTURING DRAWING PER ECR 9122
A	AN	06-30-16	DRAWING CREATED PER DOR 16-7414JP
REV.	INIT.	DATE	DESCRIPTION
	AN	05-26-16	ALL INFORMATION ILLUSTRATED IS THE PROPERTY OF "CONXALL CORPORATION". UNAUTHORIZED DUPLICATION OR DISTRIBUTION OF THIS DOCUMENT IS PROHIBITED.
APPROVED BY:			<p>601 E. WILDWOOD VILLA PARK, IL 60181</p>
DATE:			
SCALE		SIZE	SHEET
NTS		B	1 OF 1
FILE:	DIRECTORY:	PART NUMBER:	TITLE:
CARA6280XSXXX90	SLW	CARA6280XSXXX90	CABLE ASSEMBLY (2-8) #20 SOCKET CONTACTS MINI-CON-X, R. ANGLE STANDARD PRODUCT
			REV B

CUSTOMER PRINT

PART NUMBER: CARA6280XSXXX90

X-ON Electronics

Largest Supplier of Electrical and Electronic Components

Click to view similar products for [Specialised Cables](#) category:

Click to view products by [Switchcraft](#) manufacturer:

Other Similar products are found below :

[603PT6](#) [603SS6L](#) [604PT6](#) [604SS6](#) [706000D02F200](#) [910640](#) [1200740077](#) [1200740114](#) [AC172](#) [ACL-SSI-4](#) [R88ACAKA0015SRE](#)
[R88ACAWL005SDE](#) [R88ACRGD0R3C](#) [1300150047](#) [1300660036](#) [1302262116](#) [1300150149](#) [1300220020](#) [1300220104](#) [1300220119](#)
[1301240492](#) [1301810221](#) [1365323-1](#) [1613055](#) [176P12](#) [1971465-2](#) [20240400003](#) [20240400013](#) [2085828-1](#) [20886510030](#) [2-22733-8](#) [22733-](#)
[8](#) [CB-5PSBC-RS](#) [CB-704EC-RS](#) [CB-BATACC-RS](#) [CB-JST3PSW-RS](#) [CB-M12COM-R10](#) [25AC84](#) [25AK84X](#) [25AU25](#) [25FN82](#) [3011-03](#)
[AC118](#) [ACL-HHS-1M\(CAT5E\)](#) [SSL009PC2DC012N](#) [FC2A-KC6C](#) [2085828-2](#) [20886510150](#) [CCS-FCB-5](#) [CCSFCBF2](#)