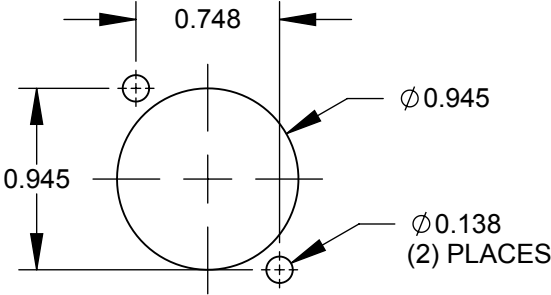


- NOTES:**
1. INSERTION LOSS: 0.75 dB MAX.
 2. OPERATION TEMP: -20°C TO +70°C.
 3. PRODUCT COMES WITH DUST CAPS. (NOT SHOWN)
 4. MATERIALS:
 SLEEVE: SINGLE-MODE - CERAMIC (ZIRCONIA)
 MULTI-MODE - PHOSPHORUS BRONZE
 HOUSING - DELRIN, BLACK
 ADAPTER - THERMOPLASTIC
 SCREWS - STEEL, NICKEL PLATED
 ADAPTER MOUNTING CLIPS - STAINLESS STEEL
 5. FOR MOUNTING SCREWS TO BE SHIPPED WITH ASSEMBLY AND INDIVIDUALING PACKAGING, ADD SUFFIX -PKG TO PART NUMBER.
 6. WHEN MOUNTING ASSEMBLY, USE A SCREW TORQUE OF 10 INCH-POUNDS MAXIMUM.
 7. THIS PRODUCT IS RoHS COMPLIANT.



| PART NUMBER | LC2 ADAPTER | ADAPTER COLOR |
|-------------|-------------|---------------|
| EHLC2 | SINGLE-MODE | BLUE |
| EHLC2M | MULTI-MODE | BEIGE |

CUSTOMER DRAWING

| | | | | | | | | | | |
|-----------|------------|---------|----|------|--------------------------------------------------------------------------------------------------------------------------------------------------------------------------------------------|-------|-----------|--------------|---------------------|----------|
| | | | | | THIS DRAWING DESCRIBES A DESIGN CONSIDERED PROPRIETARY IN NATURE, DEVELOPED AND MANUFACTURED BY SWITCHCRAFT INC. AND IS RELEASED ON A CONFIDENTIAL BASIS FOR IDENTIFICATION PURPOSES ONLY. | | | | | |
| | | | | | SIZE | WIDTH | MULT | LBS/M | TEMPER | |
| | | | | | FINISH | | | MATERIAL | | |
| | | | | | SPEC No. | | | SPEC No. | | |
| | | | | | FIRST USED ON | | SCALE 1:1 | | | |
| B | 27239 | 1-3-14 | TO | TJK | DATE DRAWN | BY | CHKD | APVD | Switchcraft® | |
| A | 26348 | 2/27/09 | RS | TJK | 5/12/08 | JGK | RS | TJK | | |
| | | | | | SHEET 1 OF 1 | | | | | |
| REV | ECO NUMBER | DATE | BY | APVD | NAME E SERIES LC TO LC FIBER OPTIC ADAPTER, RoHS | | | PART No. | REV | |
| REVISIONS | | | | | DO NOT SCALE DRAWING | | | EHLC2 SERIES | | B |

X-ON Electronics

Largest Supplier of Electrical and Electronic Components

Click to view similar products for [Fibre Optic Connectors](#) category:

Click to view products by [Switchcraft](#) manufacturer:

Other Similar products are found below :

[0004700001](#) [6100-R](#) [6313](#) [F709034706](#) [F709722200](#) [F709730000](#) [F718183204](#) [F727403500](#) [F727752800](#) [8119](#) [9440F20-27S-190](#) [944-120-6001](#) [9441F10SL-3S](#) [9444W28-21S](#) [9444W36-10S](#) [9446F10SL-4S](#) [9446W20-16S](#) [953-101-5310-P](#) [954-101-57202B](#) [A0270169](#) [12-9122](#) [12-5702](#) [AX101713](#) [AX102420](#) [AX103923](#) [AX104024](#) [AX104193](#) [AX104230](#) [AX104562](#) [AX105203-B25](#) [AX105205-S1](#) [EHSC2M](#) [17-300800](#) [181-011-126](#) [181-011-S](#) [181-057-126](#) [HRFC-R2\(40\)](#) [NKSOPBUY](#) [20500002116](#) [2064996-1](#) [20800001065](#) [2170](#) [9132](#) [2612](#) [2620](#) [9291](#) [9440F16-10S](#) [9440F20-18S](#) [9446F16-10S-190](#) [953-106-50231](#)