

# SWITCHCRAFT®

A H E I C O C O M P A N Y



## EH SERIES: EH MIDI FEED-THRU

NPB | 612

# EH SERIES: EH MIDI FEED-THRU

NPB | 612



## NEW OPTION

Switchcraft is proud to introduce its newest option, the Female/Female DIN 5 coupler front mount, to the EH series of audio, video and data connectors. The EH Series is an extensive line of panel mount connectors used to create custom I/O panels and wall plates for A/V, pro audio, broadcast, mobile production and post production installations.

## FEATURES & BENEFITS

Compatible with Switchcraft® QGPK Series rack panels and WP Series wall plates

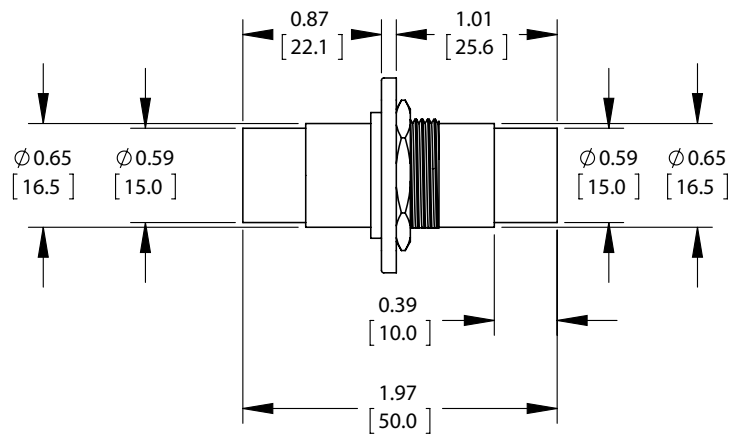
All connectors fit into a standard XLR panel cutout

Available in nickel or black flange

Available individually or bagged with mounting screws

# EH SERIES: EH MIDI FEED-THRU

NPB | 612



## SPECIFICATIONS

### EHMIDI2

- EH series Female/Female DIN 5 coupler front mount.
- Straight through wiring.
- Nickel plated flange.
- Insulation: Thermoplastic
- Metal: Copper Alloy, Nickel - Plated.
- Rating: 100 VAC, 1A Max.
- RoHS Compliant.

### EHMIDI2B

- EH series Female/Female DIN 5 coupler front mount.
- Straight through wiring.
- Black flange.
- Insulation: Thermoplastic
- Metal: Copper Alloy, Nickel - Plated, with black matte finish on flange.
- Rating: 100 VAC, 1A Max.
- RoHS Compliant.

UNITS ARE LISTED IN INCHES [mm]. ALL DIMENSIONS ARE REFERENCE ONLY.

## X-ON Electronics

Largest Supplier of Electrical and Electronic Components

*Click to view similar products for [Circular DIN Connectors](#) category:*

*Click to view products by [Switchcraft](#) manufacturer:*

Other Similar products are found below :

[D38999/20MJ37PB](#) [75-190222-09G](#) [FRCIR030FP-36-10P-F80](#) [FRCIR08F-18-19S-F80](#) [FRCIR08R-36-7S-F80](#) [8R3006A18M0033](#) [PT05A-14-18SW\(023\)](#) [PT05A-14-5SX](#) [GTC01A-22-28P](#) [PT05A1832SW](#) [PT05A2041SX](#) [PT05SE1832SWLC](#) [PT05SE1832SYLC](#)  
[GTC030-20-27PW-LC](#) [ACC06AF-20-23P\(003\)](#) [1210500311](#) [1210503216](#) [ACS00F-16-10S\(003\)](#) [ACS06AF-16-10P\(003\)](#) [D38999/42FE35AN](#)  
[D38999/46WE6SN](#) [MS3100F22-23S](#) [MS3100R36-5S](#) [MS3101E28-21S](#) [MS3101E2821SX](#) [MS3102E184PW](#) [MS310314S-5P](#) [MS310314S-6P](#) [MS310314S-7P](#) [MS310322-8S](#) [MS3114F10-6P](#) [MS3116E8-4SW](#) [MS3122E10-6PW](#) [MS3456W28-21PZ-LC](#) [C18213N21](#) [CA3100E14S-9PB](#) [CA3100E14SA7P](#) [CA3100E16-10S](#) [CA3100E16S-8PBF80](#) [CA3100E18-1SBF80A176](#) [CA3100E20-7SB-F80-A176](#) [CA3100E22-14SB](#)  
[CA3100E22-14SBF80](#) [CA3100E22-19PBF80](#) [CA3100E22-22SB](#) [CA3100E22-22SBF80](#) [CA3100E22-2SBF80](#) [CA3100E22-7PB](#)  
[CA3100E28-21PWB02](#) [CA3100E32-15PB](#)