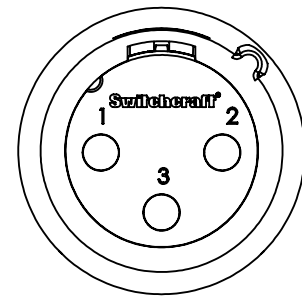
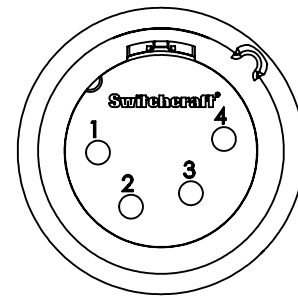


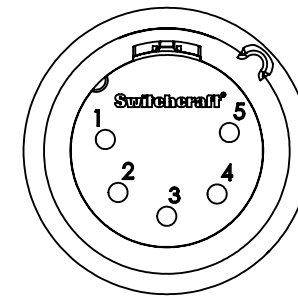
PART NUMBER	CONTACT PINS		HOUSING FINISH	INSULATOR COLOR
	QTY	FINISH		
QT3MZ	3	SILVER	NICKEL	GREEN
QT3MAUZ	3	GOLD	NICKEL	GREEN
QT3MBZ	3	SILVER	BLACK CHROME	BLACK
QT3MBAUZ	3	GOLD	BLACK CHROME	BLACK
QT4MZ	4	SILVER	NICKEL	GREEN
QT4MAUZ	4	GOLD	NICKEL	GREEN
QT4MBZ	4	SILVER	BLACK CHROME	BLACK
QT4MBAUZ	4	GOLD	BLACK CHROME	BLACK
QT5MZ	5	SILVER	NICKEL	GREEN
QT5MAUZ	5	GOLD	NICKEL	GREEN
QT5MBZ	5	SILVER	BLACK CHROME	BLACK
QT5MBAUZ	5	GOLD	BLACK CHROME	BLACK
QT6MZ	6	SILVER	NICKEL	GREEN
QT6MAUZ	6	GOLD	NICKEL	GREEN
QT6MBZ	6	SILVER	BLACK CHROME	BLACK
QT6MBAUZ	6	GOLD	BLACK CHROME	BLACK
QT7MZ	7	SILVER	NICKEL	GREEN
QT7MAUZ	7	GOLD	NICKEL	GREEN
QT7MBZ	7	SILVER	BLACK CHROME	BLACK
QT7MBAUZ	7	GOLD	BLACK CHROME	BLACK



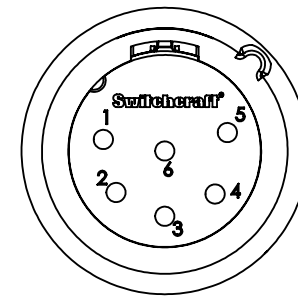
3 PIN



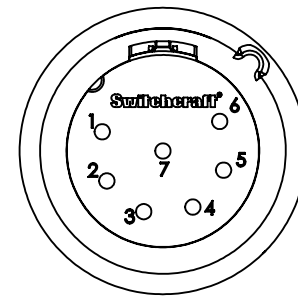
4 PIN



5 PIN

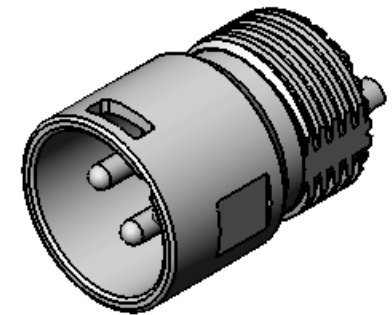
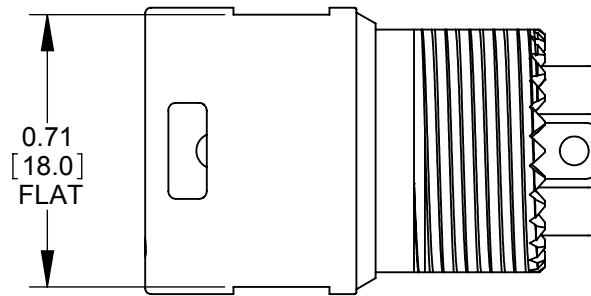


6 PIN

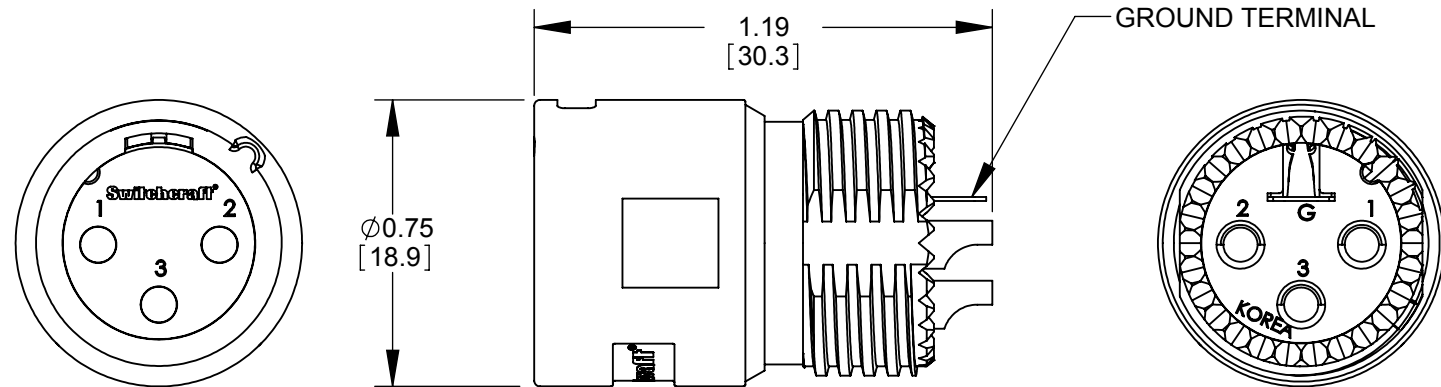


7 PIN

CONTACT PINS AS VIEWED FACING MALE CONNECTOR



QT3MZ SHOWN



CUSTOMER DRAWING

NOTES:

- MATERIALS:  
HOUSING - ZINC ALLOY  
INSULATOR - THERMOPLASTIC  
GROUND TERMINAL - SPECIAL COPPER ALLOY  
CONTACT PINS - COPPER ALLOY

2. THESE PRODUCTS ARE RoHS COMPLIANT.

REV	ECO NUMBER	DATE	BY	APVD
D	27081	01/25/13	BL	TJK
C	24940	12-1-04	RS	TJK
B	24552	10-10-03	JL	BRH
A	24446	8-11-03	JL	BRH
REVISIONS				

★ STAR SYMBOL DENOTES CRITICAL DIMENSION

- UNLESS OTHERWISE SPECIFIED
- ALL DIMENSIONS IN INCHES  
- TWO PLACE DECIMALS ±0.01  
- THREE PLACE DECIMALS ±0.005  
- ANGLES ±1°  
- ALL DIA. CONCENTRIC WITHIN 0.005 T.I.R.
  - FEATURES ON THE SAME CENTERLINE MUST BE ALIGNED WITHIN ±0.002
  - REMOVE ALL BURRS

DO NOT SCALE DRAWING

THIS DRAWING DESCRIBES A DESIGN CONSIDERED PROPRIETARY IN NATURE, DEVELOPED AND MANUFACTURED BY SWITCHCRAFT INC. AND IS RELEASED ON A CONFIDENTIAL BASIS FOR IDENTIFICATION PURPOSES ONLY.

SIZE	WIDTH	MULT	LBS/M	TEMPER
FINISH		MATERIAL		
SPEC No.		SPEC No.		
FIRST USED ON AAA3MZ		SCALE 2:1		
DATE DRAWN	BY	CHKD	APVD	
3-10-03	BRH	BRH	BRH	
		8-11-03	8-11-03	
NAME		PART No.		REV
MALE XLR INSERT SUB-ASSY, RoHS		QT_MZ SERIES		D

Switchcraft®

SHEET 1 OF 1

## X-ON Electronics

Largest Supplier of Electrical and Electronic Components

*Click to view similar products for [XLR Connectors](#) category:*

*Click to view products by [Switchcraft](#) manufacturer:*

Other Similar products are found below :

[707-0300](#) [A3F01](#) [A3M01](#) [QGP3F](#) [HA16PRM-3SG\(71\)](#) [AA3FL](#) [AAA4FWZ](#) [AAA4MWZ](#) [AC5FPZB](#) [AC6AFDZV](#) [D4FB](#) [DE4MW](#)  
[E3MBAUSW](#) [99.265.0400.0](#) [A3F04](#) [AC3FG](#) [AC4-FCP](#) [AQG4F](#) [2504FP](#) [R6MZ](#) [3FD-V-I-B](#) [3MD-V-I-B](#) [TA01](#) [TA3MWX](#) [TA5MLWX](#)  
[TRASM4M1X](#) [TRASM7M1X](#) [ML1](#) [TS05TS](#) [3FD-L-I-\(O\)](#) [D6FDB](#) [DB25FTRS](#) [DHNF-BAG-MAD](#) [DHNF-BAG-O](#) [DHNM-BAG](#)  
[XLR05TRS](#) [XLRM05XLR05](#) [XLRM05XLRFB](#) [XLRM10XLR05](#) [E3FBAUSW](#) [E3FSW](#) [E3MSW](#) [SR03](#) [TA4FLWX](#) [TA6FLWX](#)  
[TRAPC8M1X](#) [TRASM6M1X](#) [TRS10TRS](#) [TRSF05XLRM](#) [TRSF10XLRM](#)