

PART NUMBER: SF4295B-WL

CUSTOMER PRINT

CUSTOMER APPROVAL

THIS DOCUMENT CONTAINS CONFIDENTIAL INFORMATION PROPRIETARY TO CONXALL CORPORATION. ANY REPRODUCTION, DISCLOSURE, OR USE OF THIS DOCUMENT /INFORMATION IS EXPRESSLY PROHIBITED UNLESS AUTHORIZED IN WRITING BY CONXALL CORPORATION.

CHECKED BY: _____

APPROVED BY: _____

DATE: _____

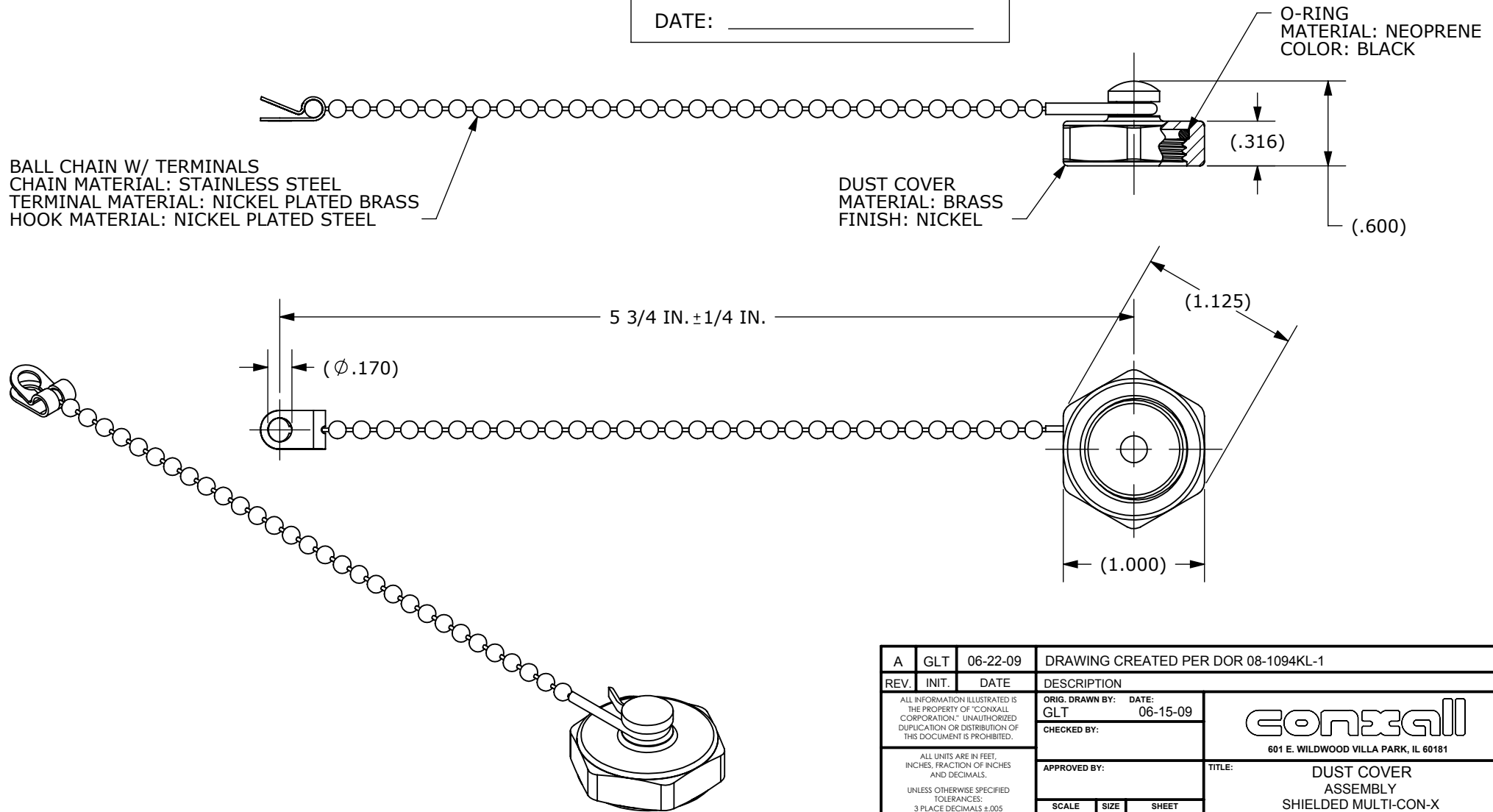
NOTES:

1. FINISHED PRODUCT PACKAGED ONE ASSEMBLY PER BAG; INDIVIDUALLY BAGGED PARTS ARE THEN BULK PACKED.
2. PART IS ASSEMBLED AS SHOWN ON DRAWING.

BALL CHAIN W/ TERMINALS
 CHAIN MATERIAL: STAINLESS STEEL
 TERMINAL MATERIAL: NICKEL PLATED BRASS
 HOOK MATERIAL: NICKEL PLATED STEEL

DUST COVER
 MATERIAL: BRASS
 FINISH: NICKEL

O-RING
 MATERIAL: NEOPRENE
 COLOR: BLACK



A	GLT	06-22-09	DRAWING CREATED PER DOR 08-1094KL-1	
REV.	INIT.	DATE	DESCRIPTION	
<small>ALL INFORMATION ILLUSTRATED IS THE PROPERTY OF CONXALL CORPORATION. UNAUTHORIZED DUPLICATION OR DISTRIBUTION OF THIS DOCUMENT IS PROHIBITED.</small>			ORIG. DRAWN BY: GLT DATE: 06-15-09	<p>601 E. WILDWOOD VILLA PARK, IL 60181</p>
<small>ALL UNITS ARE IN FEET, INCHES, FRACTION OF INCHES AND DECIMALS.</small> <small>UNLESS OTHERWISE SPECIFIED TOLERANCES: 3 PLACE DECIMALS ±.005 ANGLES ±1° FRACTIONS ±1/16</small>			CHECKED BY:	
<small>≡ CRITICAL CHARACTERISTIC FLAG PER SPEC. XXXX</small>			APPROVED BY:	CUSTOMER:
SCALE	SIZE	SHEET	PART NUMBER: SF4295B-WL	
NTS	A	1 OF 1	FILE: SF4295B-WL_CD	REV A
DIRECTORY: SLW		PART NUMBER: SF4295B-WL		

X-ON Electronics

Largest Supplier of Electrical and Electronic Components

Click to view similar products for [Modular Connectors](#) / [Ethernet Connectors](#) category:

Click to view products by [Switchcraft](#) manufacturer:

Other Similar products are found below :

[8949-H88/06BLKA/SN](#) [74441-0010/BKN](#) [PHP-6P6C-5](#) [GAX-3-66](#) [GAX-8-62](#) [GDCX-PN-66](#) [GLX-A-44](#) [GLX-N-1010M-BLK](#) [GMX-SMT4-N-88](#) [GSGX-N-2-88](#) [GSGX-N-4-88](#) [GSX-NS2-88-3.05](#) [GSX-NS-88-3.68](#) [PT-108A-8C-UL](#) [PTS-J531-8CS-50UL](#) [A-2014-0-4](#)
[GWLX-S9-88-YG](#) [DC-1021-8-WH-6](#) [1300530003](#) [1324640-4](#) [RJ11FTVC2G](#) [RJ11FTVC2N](#) [RJFTVX2SA1G](#) [132764-001](#) [1413235](#)
[MPS88RX-5000](#) [E5288-S000K3-L](#) [155302-001](#) [AX101050](#) [AX101063](#) [AX101065](#) [AX101072](#) [AX101307](#) [AX101315](#) [AX101318](#)
[AX102271](#) [AX102288](#) [AX102651](#) [AX102660](#) [J0012D21NL](#) [J0026D01ENL](#) [PC4D0018P](#) [8949-B88/6](#) [2-6609208-5](#) [937-SP-3088-2PC-A192](#)
[303066VFL](#) [303068V](#) [303088LFLSA](#) [303088SBL](#) [30-8603](#)