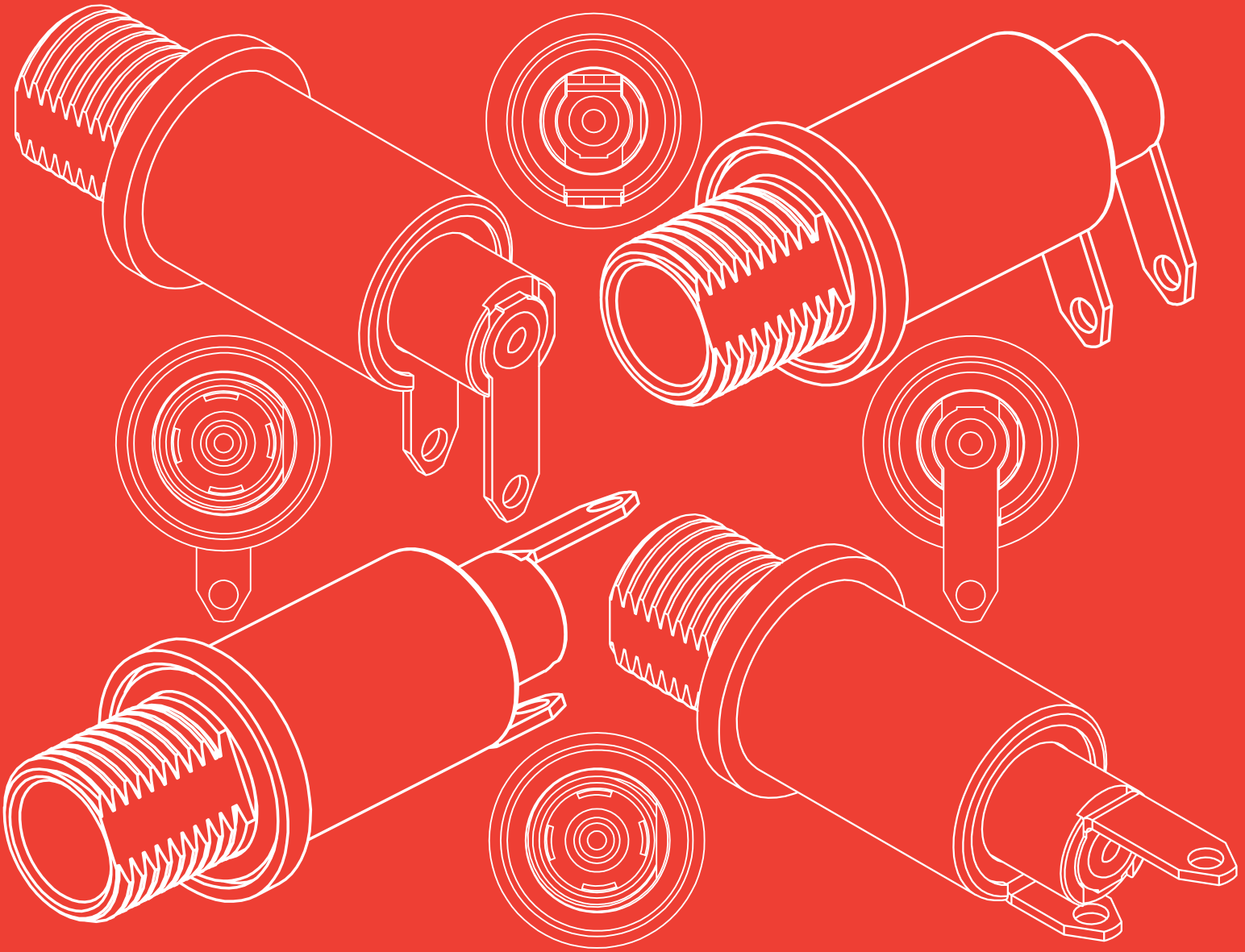


# SWITCHCRAFT®

A HEICO COMPANY



## SEALED 10 AMP POWER JACKS

NPB | 608

# SEALED 10 AMP POWER JACKS

NPB | 608



## FEATURES & BENEFITS

- Up to 13A current rating (carry)
- Up to 24V AC/DC
- Available in sealed only but can be used with S10 style plugs both sealed and non-sealed
- Recommend plug locking versions to keep plugs connected to jack.

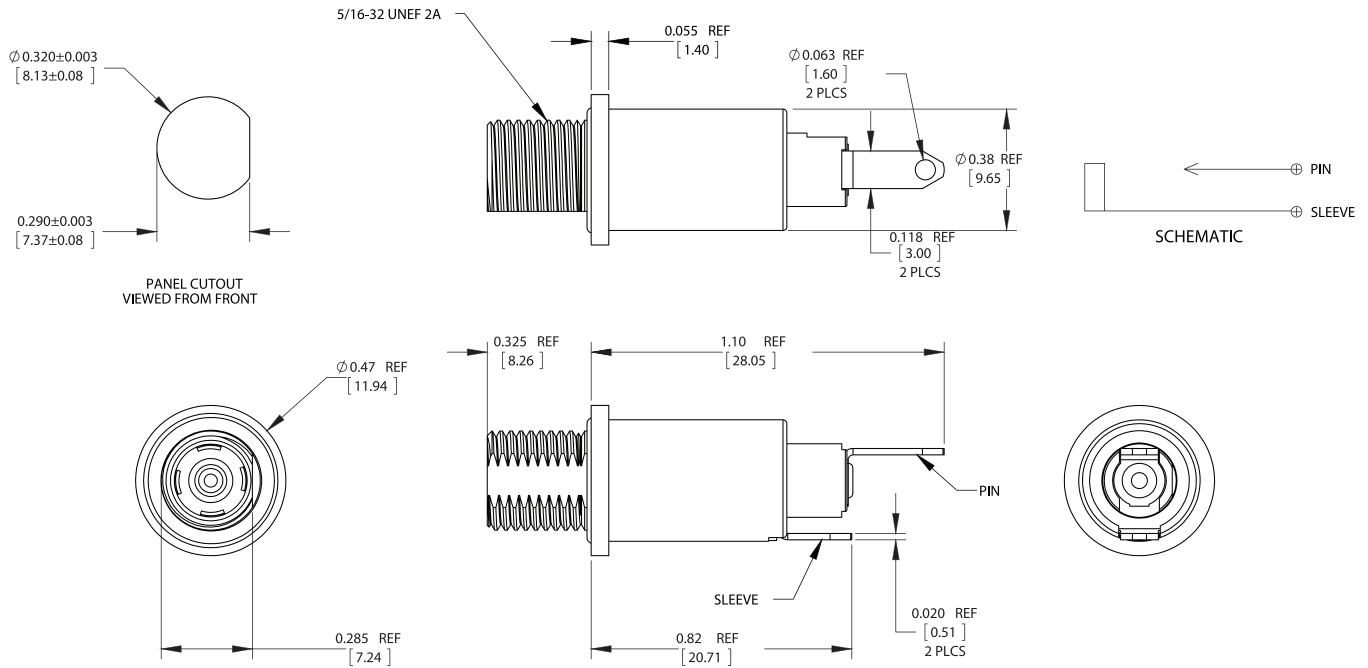
## APPLICATIONS

- Any sealed data transmission
- Military or industrial GPS location devices
- Instrumentation
- Medical equipment
- Marine Applications
- Transportation
- General industrial electronic applications
- Power supplies

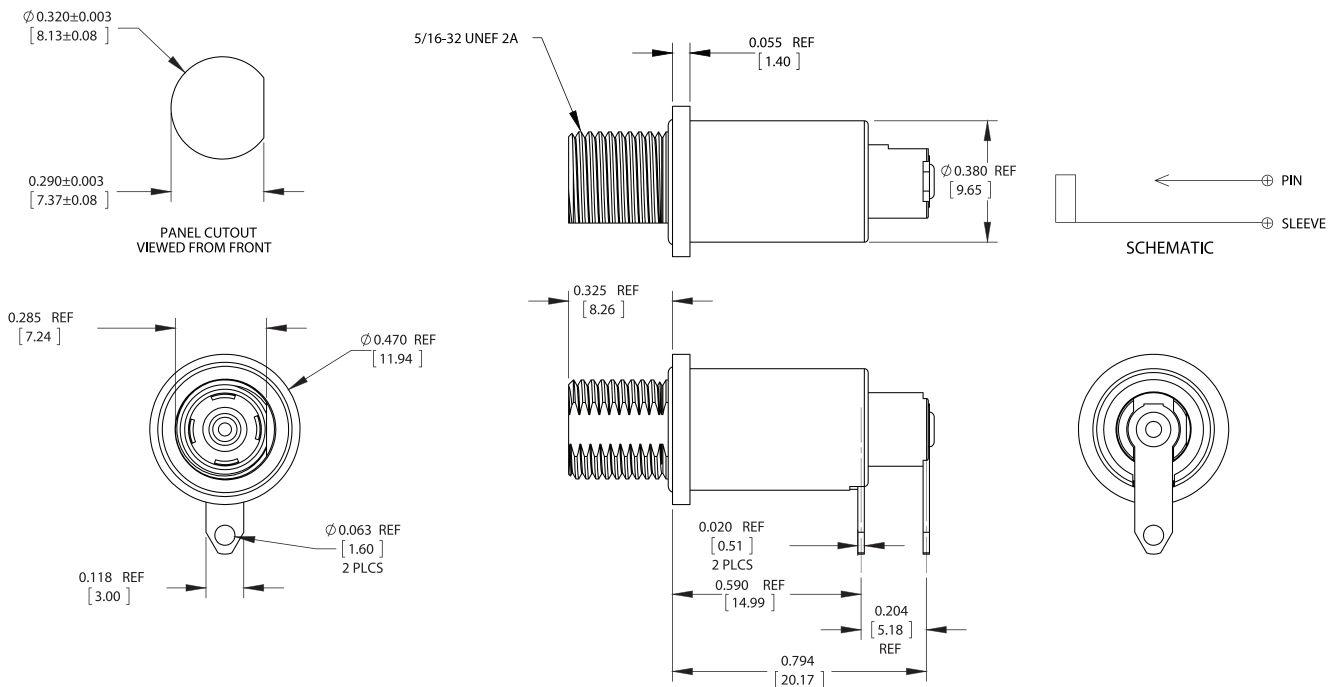
# SEALED 10 AMP POWER JACKS

NPB | 608

## SEALED 10 AMP POWER JACK, STRAIGHT - ORDERING CODE: ST10U



## SEALED 10 AMP POWER JACK, RIGHT ANGLE - ORDERING CODE: RAPC10U



UNITS ARE LISTED IN INCHES. ALL DIMENSIONS ARE REFERENCE ONLY.

PLEASE VISIT [WWW.SWITCHCRAFT.COM](http://WWW.SWITCHCRAFT.COM) FOR THE MOST UP-TO-DATE PRODUCT SPECIFICATIONS.  
MADE IN USA

# SEALED 10 AMP POWER JACKS

NPB | 608

## SPECIFICATIONS

### MECHANICAL SPECIFICATIONS

Life:	5000 mechanical cycles minimum using S10 style plugs
Vibration:	Mil-Std 202G Method 201A (jack or when mated with locking plug)
Operating Forces:	3 lb maximum insertion 0.2 lb minimum withdrawal when using S10 type plug
Panel Mount Torque:	8-10 in/lb

### ELECTRICAL SPECIFICATIONS

Voltage Rating:	24V AC/DC
Current Rating:	Refer to current rating table
Insulation Resistance:	1000 MΩ minimum initial
Contact Resistance (Initial):	10 mΩ maximum

### ENVIRONMENTAL SPECIFICATIONS

Operating Temperature Rating:	-40 °C to +105 °C (-40°F to +221°F)
Moisture Resistance:	Mil-Std 202G Method 106G (jack or when mated with sealed locking plug)
Insulation Resistance:	Mil-Std 202G Method 302 (Condition B Only)
Thermal Shock:	Mil-Std 202G Method 107G (jack or when mated with sealed locking plug)
Salt Atmosphere (Corrosion):	Mil-Std 202G Method 101E Condition B
Weathertight Ratings:	IP66, IP67, IP68, NEMA 250 (6P) (jack or when mated with sealed locking plug)

### MATERIAL SPECIFICATIONS

Housing, Hex Nut:	Copper Alloy, Nickel Plated
Washer:	Steel, Nickel Plated
Insulator:	Thermoplastic, Black
O-Ring:	Elastomer, Black
Internal O-Rings:	Elastomer, Amber
Center Pin:	Copper Alloy, Gold over Silver Plated
Center Pin & Shunt Terminals:	Copper Alloy, Matte Tin Plated
Sleeve Spring Contact:	Copper Alloy, Gold over Silver Plated

### CURRENT RATING TABLE WHEN MATED TO S10 STYLE PLUGS

Wire (awg)	Current Rating (A) at Operating Temperature (°C)			
	90°C max	95°C max	100°C max	105°C max
16	13	12	11	10
18	12	11	10	9
20	11	10	9	8

Note: DC Power Plugs & Jacks are for current carrying only. Do not connect or disconnect under load. The circuitry on-off switch should be off before connecting and disconnecting the Power Plug to the Jack. If water gets in the jack, it may cause low impedance between contacts but the water will not get inside your product if mounted properly. Blow the water out of the jack and let dry, the impedance will return to normal.

## X-ON Electronics

Largest Supplier of Electrical and Electronic Components

*Click to view similar products for [DC Power Connectors](#) category:*

*Click to view products by [Switchcraft](#) manufacturer:*

Other Similar products are found below :

[RAPC3FG](#) [B04P-VL-VN-1.8](#) [1600206-1](#) [163-0302](#) [163-0310-EX](#) [163-1100-EX](#) [163-4012-EX](#) [163-4024](#) [163-4117-EX](#) [163-5005-E](#) [163-7421](#) [163-MJ22-EX](#) [171-0721-EX](#) [171-3118-EX](#) [173-23507-ST-EX](#) [KLDVX-SMT-02-ATR](#) [KLDX-SMT-0202-BP](#) [KLDX-SMT-0202-BPTR](#) [163-0179-EX](#) [163-0307-E](#) [163-1000-EX](#) [163-4015-EX](#) [163-4119-E](#) [171-0722-E](#) [171-3218-EX](#) [171-7391](#) [173-3413-ST-EX](#) [RAPCBRK](#) [K596](#) [KLD-0201-BC](#) [KLDVX-SMT-02-BTR](#) [KPPX-D](#) [RAPC3MHG](#) [RASM752TRX](#) [163-4800-E](#) [4C6831AX](#) [ACJS-HHDR-AU](#) [TS3PNJ](#) [DC-025LM-5A-2.5](#) [CL14218R](#) [AS250F RED](#) [DC-105-4A-1.6](#) [163-0210A-E](#) [09441 AS120-F](#) [09442 AS120-M](#) [CP30240](#) [TAMIYA-M](#) [TAMIYA-MT1](#) [TAMIYA-MT2](#) [4840.1200](#)