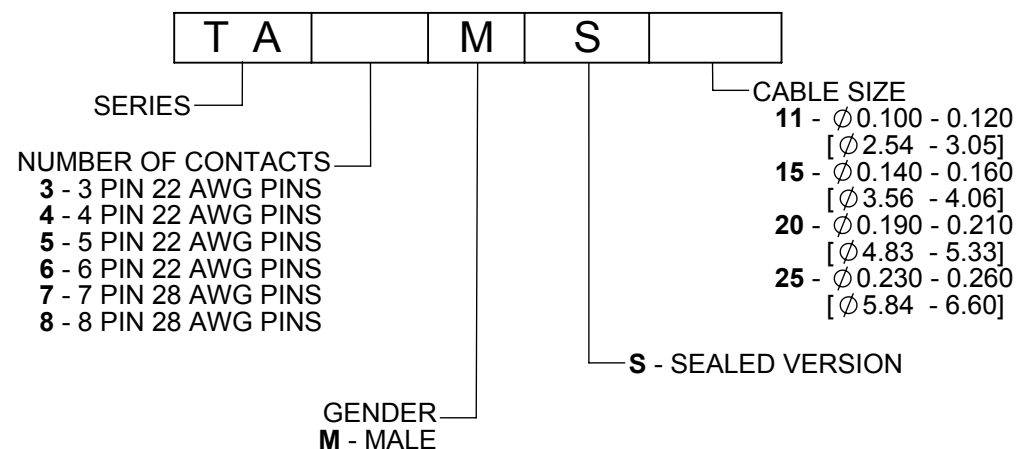
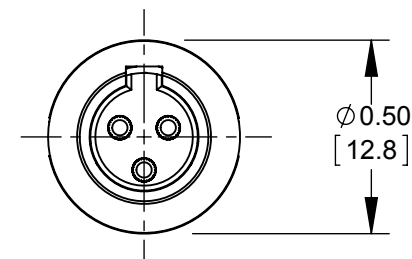
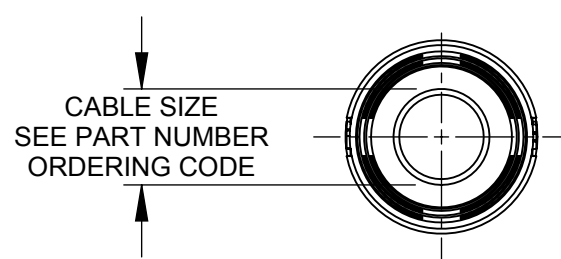
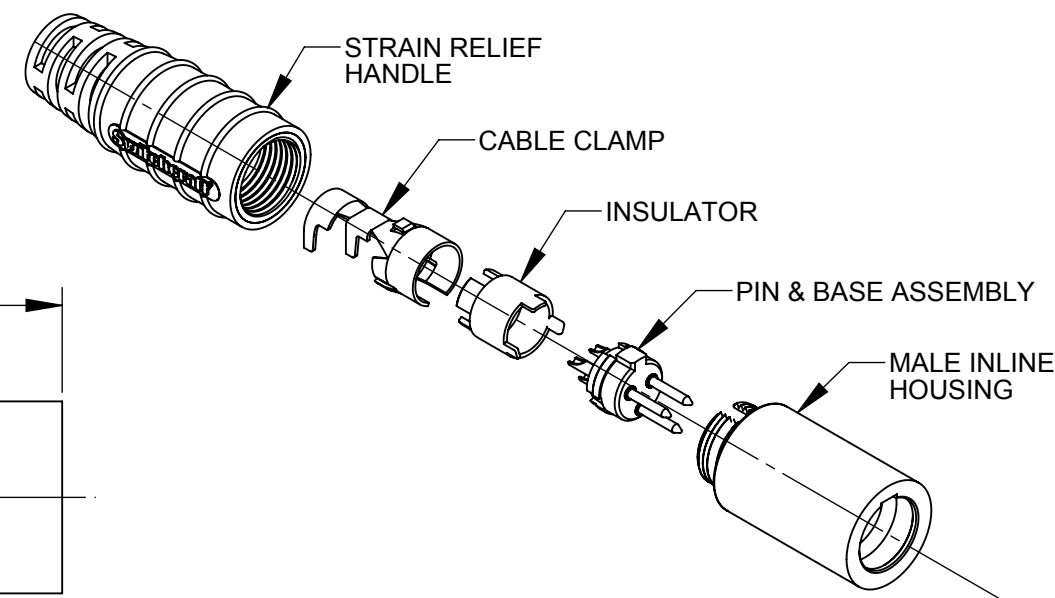
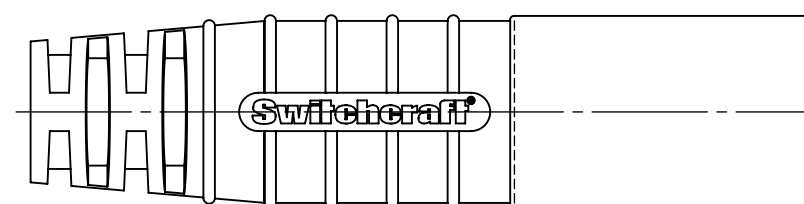
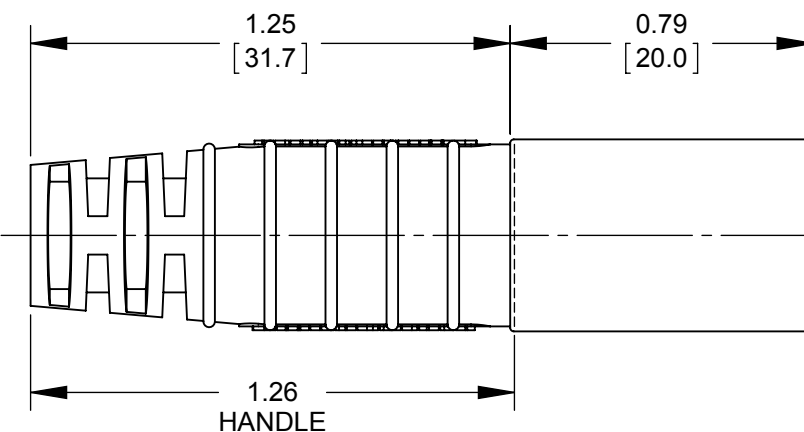


AS VIEWED FROM FRONT MATING VIEW



PART NUMBER ORDERING CODE



TA3MS SHOWN

CUSTOMER DRAWING

NOTES:

1. MATERIALS:

HOUSING - COPPER ALLOY, NICKEL-PLATED
PIN CONTACTS - COPPER ALLOY, SILVER PLATED
PIN INSULATOR - RIGID DARK BROWN THERMOPLASTIC
CABLE CLAMP - STEEL, TIN PLATED
BUTTON BOOT - BLACK THERMOPLASTIC RUBBER
INSERT MOLDED HANDLE - THERMOPLASTIC RUBBER OVER
RIGID THERMOPLASTIC, BLACK

2. THIS PRODUCT IS RoHS COMPLIANT.

					<div>UNLESS OTHERWISE SPECIFIED</div> <div>1. ALL DIMENSIONS IN INCHES [mm]</div> <div>- TWO PLACE DECIMALS ±0.02 [0.5]</div> <div>- THREE PLACE DECIMALS ±0.005 [0.13]</div>	THIS DRAWING DESCRIBES A DESIGN CONSIDERED PROPRIETARY IN NATURE, DEVELOPED AND MANUFACTURED BY SWITCHCRAFT INC. AND IS RELEASED ON A CONFIDENTIAL BASIS FOR IDENTIFICATION PURPOSES ONLY.						
						SIZE	WIDTH		MULT	LBS/M	TEMPER	
						FINISH SPEC No.				MATERIAL SPEC No.		
						FIRST USED ON			SCALE 2:1		<div>Switchcraft®</div>	
B	27629	12-18-15	TO	TJK		DATE DRAWN 1/29/13	BY AB	CHKD AB 1/29/13	APVD TJK 9-28-15			
A	27552	8-14-15	TO	TJK		SHEET 1 OF 1						
REV	ECO NUMBER	DATE	BY	APVD	NAME SEALED TINI Q-G MALE, RoHS				PART No. TA_MS SERIES		REV B	
REVISIONS					DO NOT SCALE DRAWING							

SolidWorks CAD File 

X-ON Electronics

Largest Supplier of Electrical and Electronic Components

Click to view similar products for [XLR Connectors](#) category:

Click to view products by [Switchcraft](#) manufacturer:

Other Similar products are found below :

[707-0300](#) [A3F01](#) [A3M01](#) [QGP3F](#) [HA16PRM-3SG\(71\)](#) [AA3FL](#) [AAA4FWZ](#) [AAA4MWZ](#) [AC5FPZB](#) [AC6AFDZV](#) [D4FB](#) [DE4MW](#)
[E3MBAUSW](#) [99.265.0400.0](#) [A3F04](#) [AC3FG](#) [AC4-FCP](#) [AQG4F](#) [2504FP](#) [R6MZ](#) [3FD-V-I-B](#) [3MD-V-I-B](#) [TA01](#) [TA3MWX](#) [TA5MLWX](#)
[TRASM4M1X](#) [TRASM7M1X](#) [ML1](#) [TS05TS](#) [3FD-L-I-\(O\)](#) [D6FDB](#) [DB25FTRS](#) [DHNF-BAG-MAD](#) [DHNF-BAG-O](#) [DHNM-BAG](#)
[XLR05TRS](#) [XLRM05XLR0F](#) [XLRM05XLRFB](#) [XLRM10XLR0F](#) [E3FBAUSW](#) [E3FSW](#) [E3MSW](#) [SR03](#) [TA4FLWX](#) [TA6FLWX](#)
[TRAPC8M1X](#) [TRASM6M1X](#) [TRS10TRS](#) [TRSF05XLRM](#) [TRSF10XLRM](#)