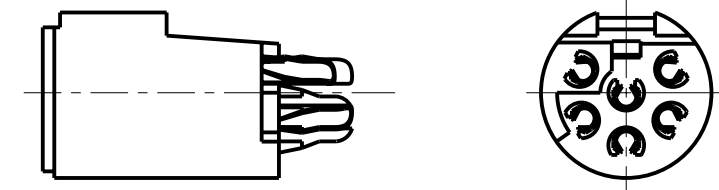
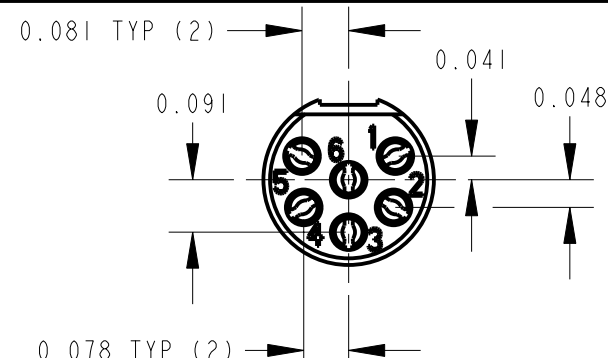
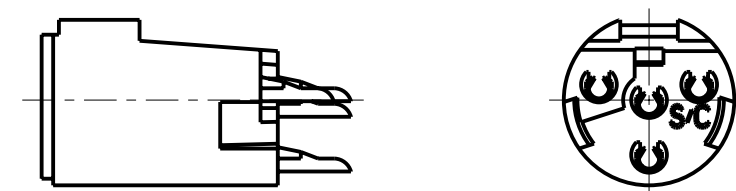
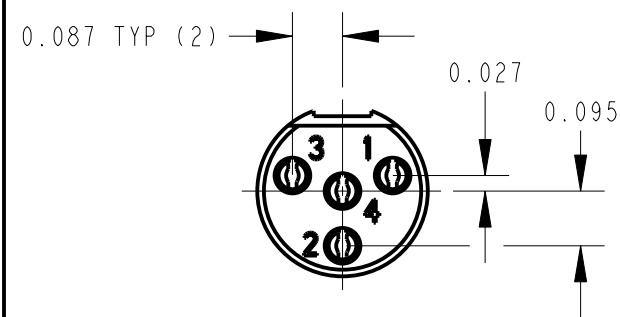


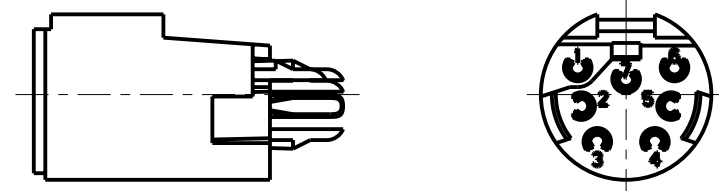
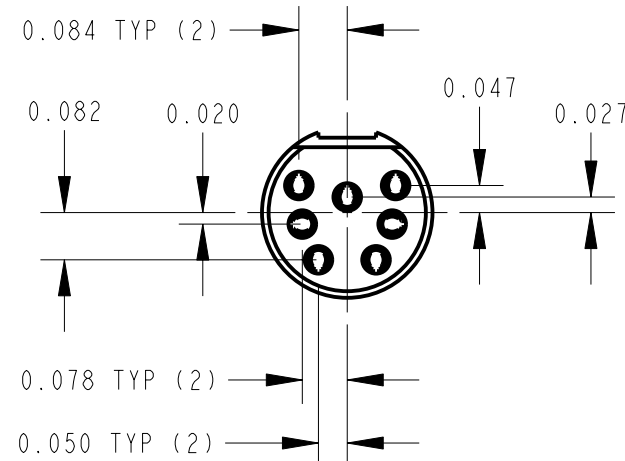
TQG3F



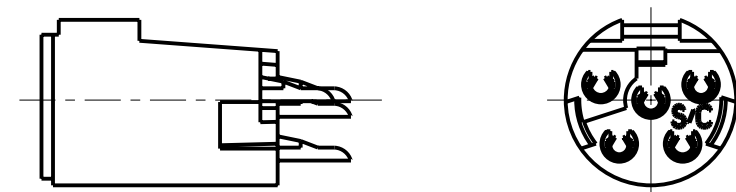
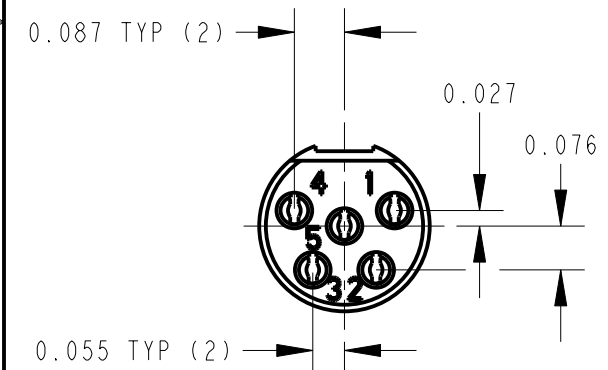
TQG6F



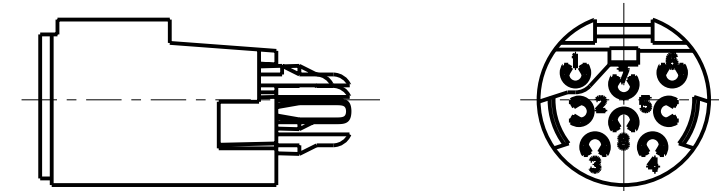
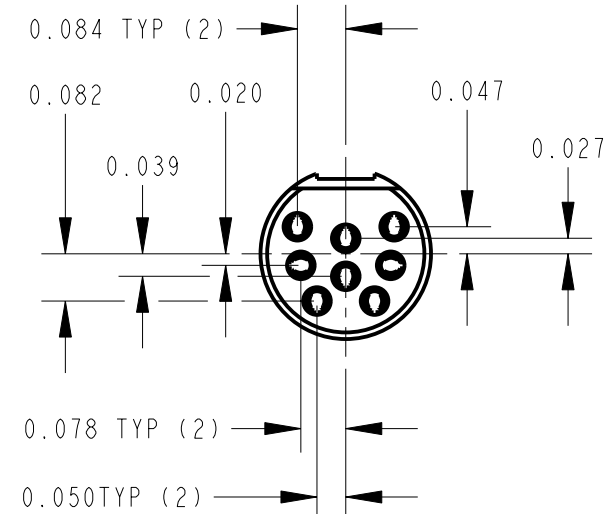
TQG4F



TQG7F



TQG5F



TQG8F

CUSTOMER DRAWING

NOTES:

- ALL DIMENSIONS ARE FOR REFERENCE.
- MATERIALS:
CONTACTS - COPPER ALLOY, SILVER PLATED
ADD "AU" SUFFIX FOR GOLD PLATED CONTACTS
INSERT - THERMOPLASTIC, BLACK
- THESE PRODUCTS ARE RoHS COMPLIANT.

REV	ECO NUMBER	DATE	BY	APVD
C	ECO #25511	1-9-06	TJK	TJK
B	ECO #19704	3-24-95	RC	GHJ
A	CAD REDRAW ECO #19163	8-8-94	WJS	GHJ

REVISIONS

★ STAR SYMBOL DENOTES CRITICAL DIMENSION

UNLESS OTHERWISE SPECIFIED

- ALL DIMENSIONS IN INCHES
- TWO PLACE DECIMALS ±0.01
- THREE PLACE DECIMALS ±0.005
- ANGLES ±1°
- ALL DIA. CONCENTRIC WITHIN 0.005 T.I.R.
- FEATURES ON THE SAME CENTERLINE MUST BE ALIGNED WITHIN ±0.002
- REMOVE ALL BURRS

DO NOT SCALE DRAWING

THIS DRAWING DESCRIBES A DESIGN CONSIDERED PROPRIETARY IN NATURE, DEVELOPED AND MANUFACTURED BY SWITCHCRAFT INC. AND IS RELEASED ON A CONFIDENTIAL BASIS FOR IDENTIFICATION PURPOSES ONLY.

SIZE	WIDTH	MULT	LBS/M	TEMPER
FINISH		MATERIAL		
SPEC No.		SPEC No.		
FIRST USED ON		SCALE		
		3:1		
DATE DRAWN	BY	CHKD	APVD	
8-Aug-94	WJS	WJS 9-8-94	GHJ 9-8-94	
NAME			PART No.	REV
FEMALE TINI-OG INSERT, RoHS			TQG_F SERIES	C

Switchcraft®

SHEET 1 OF 1

X-ON Electronics

Largest Supplier of Electrical and Electronic Components

Click to view similar products for [XLR Connectors](#) category:

Click to view products by [Switchcraft](#) manufacturer:

Other Similar products are found below :

[HA16PRQ-3SE\(71\)](#) [AA3FL](#) [AAA4FWZ](#) [AAA4MWZ](#) [AC5FPZB](#) [AC6AFDZV](#) [DE4MW](#) [E3MBAUSW](#) [99.265.0400.0](#) [AC4-FCP](#) [AQG4F](#)
[R6MZ](#) [3FD-V-I-B](#) [3MD-V-I-B](#) [TA01](#) [TA3MWX](#) [TA5MLWX](#) [TRASM4M1X](#) [ML1](#) [3FD-L-I-\(O\)](#) [DHNF-BAG-MAD](#) [DHNF-BAG-O](#)
[DHNM-BAG](#) [E3FBAUSW](#) [E3FSW](#) [TA4FLWX](#) [TA6FLWX](#) [TRAPC8M1X](#) [WP2S4P](#) [WP1S1](#) [WP1B2](#) [TA5FLWX](#) [NC3FEZY-P](#) [NC3FG-V](#)
[NC3MX-1-BAG-D](#) [NC6FSD-LX](#) [NC6MSD-LX](#) [NCJ6FK-V](#) [NCXX-PROMO](#) [NA2FPMM/W](#) [NC3FD-L](#) [NC3FD-L-0-1](#) [NC3FX-1-D](#)
[NC3MX-1-D](#) [NC3MXY-B](#) [NC5FDM3-V-BAG](#) [SL04](#) [3FD-V-I-0](#) [AC3FPZB-AU](#) [AC3-FIC](#)