

NOTES:

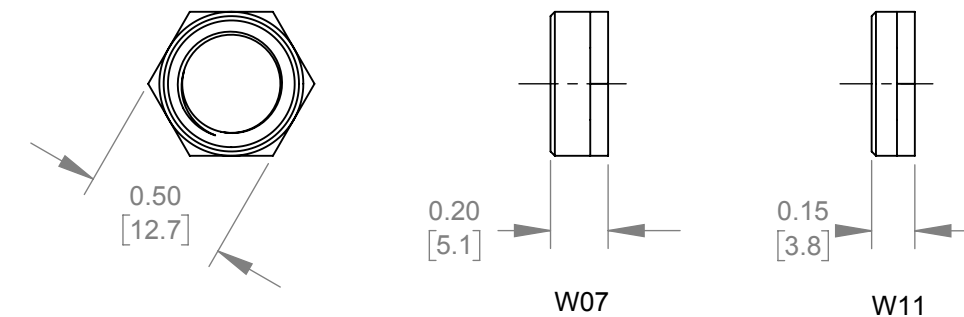
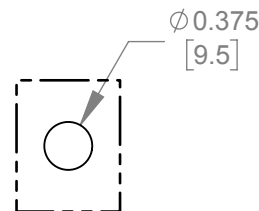
- DRAWING SHOWS ONLY TS CONFIGURATION.
- IP RATING: IP66, SEALED WHEN MATED.
- HANDLE MATERIAL: NYLON AND RUBBER.
- USE THE FOLLOWING TABLE TO DETERMINE THE SUITABLE HANDLE FOR A SPECIFIC CABLE:

Cable OD / Inches	140	170	171	200	201	230	231	260	261	290
PLUG SUFFIX	..S15	..S18	..S18	..S22	..S22	..S25	..S25	..S28	..S28	..S28

- USE THE FOLLOWING TABLE TO DETERMINE THE SUITABLE HEX NUT AND WASHER, FOR A SPECIFIC PANEL THICKNESS:

Panel thickness / Inches	0.050	0.055	0.060	0.065	0.070	0.075	0.080	0.085	0.090	0.095	0.100	0.105	0.110	0.115	0.120	0.125
Kit part number	W07 (LARGE)										W11 (SMALL)					
Washer (K180)	yes	yes	yes	yes	yes	no	no	no	no	yes	yes	yes	yes	yes	no	no

- RECOMMENDED MOUNTING HOLE DIMENSION:



- MAKE SURE THAT THE PLUG IS TIGHTENED ALL THE WAY INTO THE HANDLE TO GUARANTEE PROPER SEAL, MOUNTING THE PLUG MAY REQUIRE EXTRA FORCE TO OVERCOME THE RUBBER EDGE INTERFERENCE.
- RECOMMENDED WORKING TEMPERATURE:
-20 TO 50 C°
- THIS PRODUCT IS RoHS COMPLIANT.

REV	ECO NUMBER	DATE	BY	APVD
0A	PRELIMINARY	11/25/19	NS	SRC
REVISIONS				

UNLESS OTHERWISE SPECIFIED

1. ALL DIMENSIONS IN INCHES [mm]
 - TWO PLACE DECIMALS ±0.02 [0.5]
 - THREE PLACE DECIMALS ±0.005 [0.13]

DO NOT SCALE DRAWING

THIS DRAWING DESCRIBES A DESIGN CONSIDERED PROPRIETARY IN NATURE, DEVELOPED AND MANUFACTURED BY SWITCHCRAFT INC. AND IS RELEASED ON A CONFIDENTIAL BASIS FOR IDENTIFICATION PURPOSES ONLY.									
SIZE *	WIDTH *	MULT *	LBS/M *	TEMPER *					
FINISH *					MATERIAL *				
SPEC No. *					SPEC No. *				
FIRST USED ON *			SCALE 1:4						
DATE DRAWN	BY	CHKD	APVD						
11/25/19	NS	NS	SRC						
			11/25/19	11/25/19					
NAME				PART No.		REV			
SEALED 0.25" PLUG AND JACK				11W07-W11		0A			
				250S15-S28					

CUSTOMER DRAWING

Switchcraft®

SHEET 1 OF 1

X-ON Electronics

Largest Supplier of Electrical and Electronic Components

Click to view similar products for [Phone Connectors](#) category:

Click to view products by [SWITCHCRAFT](#) manufacturer:

Other Similar products are found below :

[M444B](#) [6J1041A](#) [R4F](#) [E12BPKG](#) [ECP4PKG](#) [161-3502L-E](#) [MT333X](#) [171-0350-EX](#) [171-101A-EX](#) [171-3325-EX](#) [176S](#) [NC3MG-V](#)
[NS112BX](#) [NYS228G](#) [P10834](#) [P2380](#) [P2381X](#) [P2411X](#) [P2412](#) [P2724](#) [JM2PB-AU BULK](#) [9144](#) [S2674](#) [280L](#) [163-158N-2-E](#) [171-3308-EX](#)
[171-3500-E](#) [2501FT](#) [CMT335](#) [M10662](#) [330Q](#) [RJ5VI-S](#) [40116](#) [TM1R-AU](#) [TM2PBMJ-AU](#) [TM2PJ-AU](#) [TM2PJ-AU BULK](#) [4803.1351](#)
[49201](#) [49205](#) [TS3PBJ-AU](#) [TS3PBMJ-AU](#) [TT32BX](#) [54B](#) [40112](#) [40205](#) [415](#) [XMT332B](#) [52170017-331](#) [570](#)