

| | | | | | |
|-----------|--------------|-------|----|--------------|-------|
| MFG. ENG. | APPROVED BY: | DATE: | QA | APPROVED BY: | DATE: |
|-----------|--------------|-------|----|--------------|-------|

| ASS'Y P/N | CONTACT QTY. | CABLE O.D. RANGE |
|------------------|--------------|-------------------------|
| W18280-2PG-P-311 | 2 | 0.09 - 0.14 [2.3 - 3.6] |
| W18280-2PG-P-315 | 2 | 0.15 - 0.17 [3.8 - 4.3] |
| W18280-2PG-P-318 | 2 | 0.18 - 0.20 [4.6 - 5.1] |
| W18280-3PG-P-311 | 3 | 0.09 - 0.14 [2.3 - 3.6] |
| W18280-3PG-P-315 | 3 | 0.15 - 0.17 [3.8 - 4.3] |
| W18280-3PG-P-318 | 3 | 0.18 - 0.20 [4.6 - 5.1] |
| W18280-XPG-P-3XX | | |

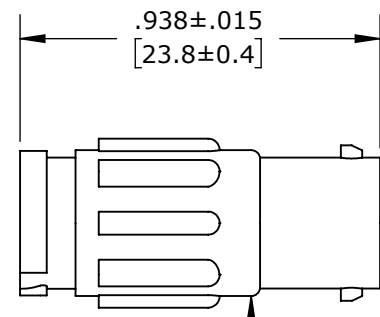
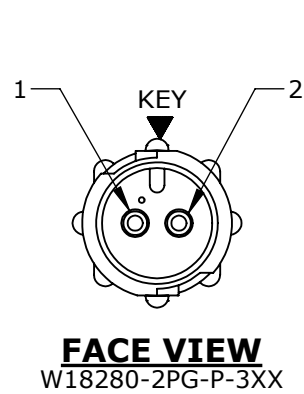
NOTES:

1. ALL PARTS ARE BULK PACKED.
2. REFER TO DRAWING HPMCSTD FOR CONTACT PATTERNS.
3. ALL DIMENSIONS ARE REFERENCE ONLY IN INCHES [mm], WITHIN ±0.015 UNLESS OTHERWISE NOTED.

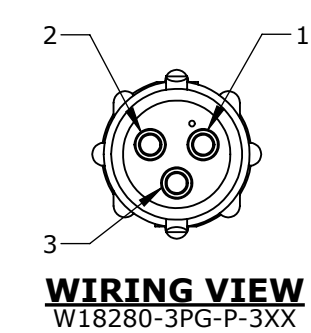
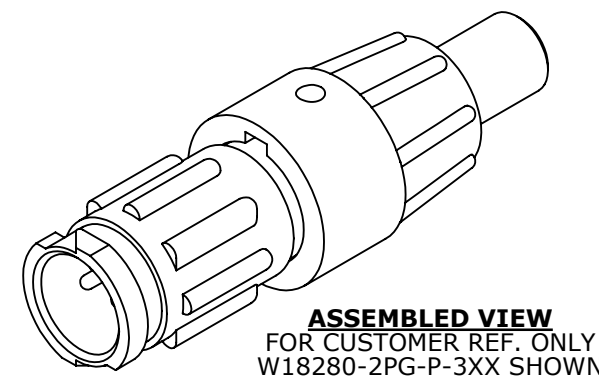
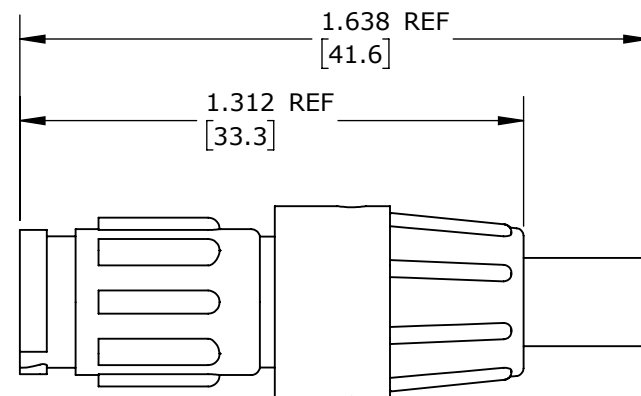
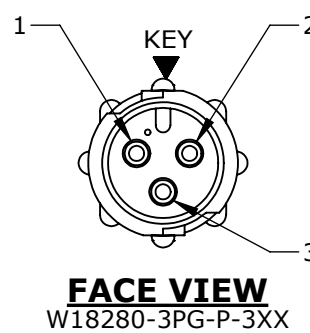
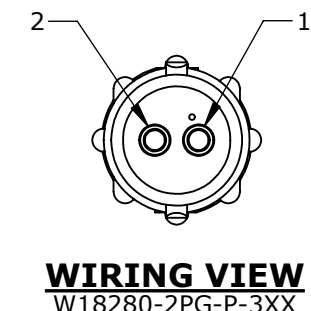
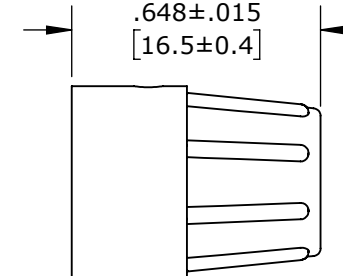
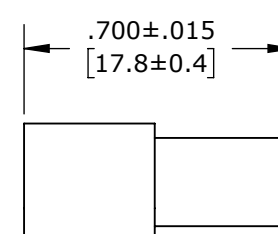
OF CONTACTS

GROMMET SIZE = CABLE O.D. RANGE:

- 311 = 0.09 - 0.14 [2.3 - 3.6]
- 315 = 0.15 - 0.17 [3.8 - 4.3]
- 318 = 0.18 - 0.20 [4.6 - 5.1]



(2-3) # 20 PIN CONTACTS
CRIMP TAIL
MAT'L: GOLD PLATED, COPPER ALLOY



CUSTOMER APPROVAL

THIS DOCUMENT CONTAINS CONFIDENTIAL INFORMATION PROPRIETARY TO CONXALL CORPORATION. ANY REPRODUCTION, DISCLOSURE, OR USE OF THIS DOCUMENT /INFORMATION IS EXPRESSLY PROHIBITED UNLESS AUTHORIZED IN WRITING BY CONXALL CORPORATION.

APPROVED BY: _____
DATE: _____

RoHS COMPLIANT

DIMENSIONS IS BRACKETS [] ARE METRIC

PRELIMINARY

| | | | | | |
|------|-------|---------|---|---|---|
| 0A | JGK | 8/22/19 | DRAWING CREATED FOR PDR #18004. | | |
| REV. | INIT. | DATE | DESCRIPTION | | |
| | | | ALL INFORMATION ILLUSTRATED IS THE PROPERTY OF "CONXALL CORPORATION". UNAUTHORIZED DUPLICATION OR DISTRIBUTION OF THIS DOCUMENT IS PROHIBITED. ALL UNITS ARE IN FEET, INCHES, FRACTION OF INCHES AND DECIMALS. UNLESS OTHERWISE SPECIFIED TOLERANCES: 3 PLACE DECIMALS ±.005 ANGLES ±1° FRACTIONS ±1/16 ▽ - CRITICAL CHARACTERISTIC FLAG PER SPEC. XXXX | ORIG. DRAWN BY: JGK DATE: 8/22/19 CHECKED BY: APPROVED BY: SCALE: NTS SIZE: B SHEET: 1 OF 1 FILE: W18280-XPG-P-3XX DIRECTORY: SLW | 601 E. WILDWOOD VILLA PARK, IL 60181 TITLE: CABLE TO CABLE CONN. ASS'Y (2-3) #20 PIN CONTACTS, CRIMP TAIL INSTA-CLICK, MICRO-CON-X STANDARD PRODUCT CUSTOMER: PART NUMBER: W18280-XPG-P-3XX REV: 0A |

CUSTOMER PRINT

PART NUMBER: W18280-XPG-P-3XX

X-ON Electronics

Largest Supplier of Electrical and Electronic Components

Click to view similar products for [Standard Circular Connector](#) category:

Click to view products by [Switchcraft](#) manufacturer:

Other Similar products are found below :

[5M2530B10P](#) [600259N006](#) [600273N007](#) [6134-336-13149](#) [6134-337-11149](#) [6134-337-2390](#) [6134-341-17149](#) [6280-4SG-516](#) [6280-7SG-3DC](#)
[6290](#) [6291A](#) [66200A-10](#) [680-SMG](#) [681-PMG](#) [CXS3102A14S2P](#) [CXS3102A181S](#) [7271-6SG-300](#) [7282-3PG-300-CH3](#) [75-474014-05S](#) [75-](#)
[474618-01S](#) [75-474618-04P](#) [75-474618-04S](#) [799539-000](#) [MI8-SE](#) [805-005-07NF11-19PC](#) [805-005-07NF15-7PA](#) [8280-4PG-516](#) [8280-7PG-](#)
[519](#) [8282-5PG-519](#) [836783-1](#) [MP-4102-25P-C](#) [862256-1](#) [864019-2](#) [866857-1](#) [867865-1](#) [PT01SP-14-18P](#) [PT08P-14-5S](#) [120-1833-000](#)
[QCM019PC2DC012B](#) [1-2069279-1](#) [121583-0217](#) [121667-0020](#) [129591AU](#) [1000B BULK](#) [RD10A16-19-P6CS051/1](#) [RD10A20-31-](#)
[P8CS051/1](#) [RD16A14-12-S6CS051/2](#) [1301240290](#) [1301240347](#) [1301860202](#) [1301240268](#)