



# TAI-SAW TECHNOLOGY CO., LTD.

No. 3, Industrial 2nd Rd., Ping-Chen Industrial District,  
Taoyuan, 324, Taiwan, R.O.C.

TEL: 886-3-4690038 FAX: 886-3-4697532

E-mail: [tstsales@mail.taisaw.com](mailto:tstsales@mail.taisaw.com) Web: [www.taisaw.com](http://www.taisaw.com)

## Approval Sheet For Product Specification

Issued Date:

Product Name: SAW Filter 40MHz SMD 7.0×5.0 mm

TST Parts No.:TB0318A

Customer Parts No.:\_\_\_\_\_

Company: _____
Division: _____
Approved by : _____
Date: _____

Checked by: \_\_\_\_\_ Andy Lee

Approval by: \_\_\_\_\_ Francis Chen

Date: \_\_\_\_\_ 2005/08/12



# TAI-SAW TECHNOLOGY CO., LTD.

No. 3, Industrial 2nd Rd., Ping-Chen Industrial District,  
Taoyuan, 324, Taiwan, R.O.C.

TEL: 886-3-4690038 FAX: 886-3-4697532

E-mail: [tstsales@mail.taisaw.com](mailto:tstsales@mail.taisaw.com) Web: [www.taisaw.com](http://www.taisaw.com)

## SAW Filter 40 MHz

MODEL NO.: TB0318A

REV. NO.:1

### A. MAXIMUM RATING:

1. Input Power Level: 10 dB<sub>m</sub>
2. DC voltage: 5 V
3. Operating Temperature: -20°C to +85°C
4. Storage Temperature: -40°C to +85°C

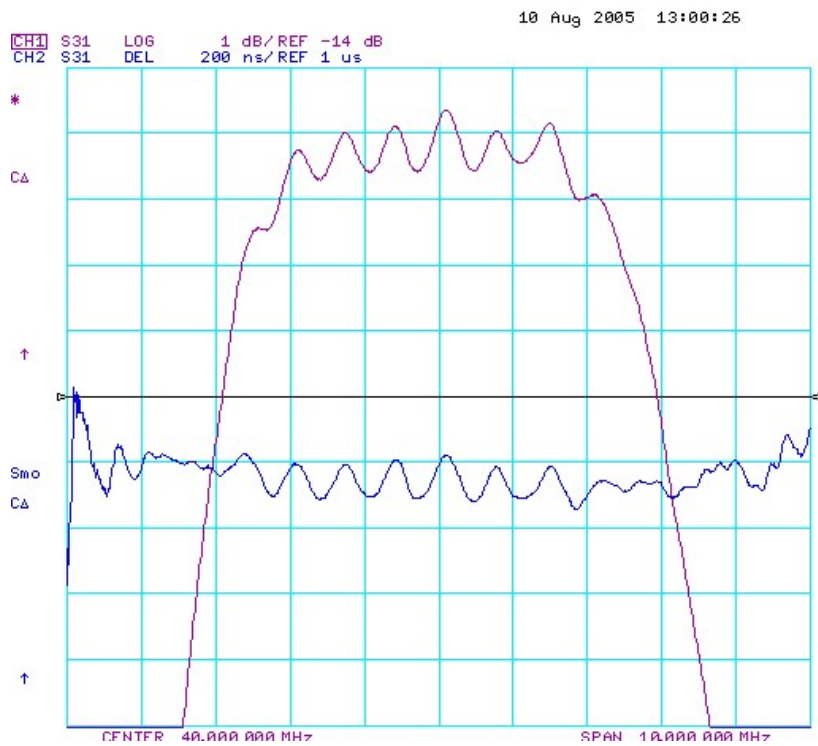
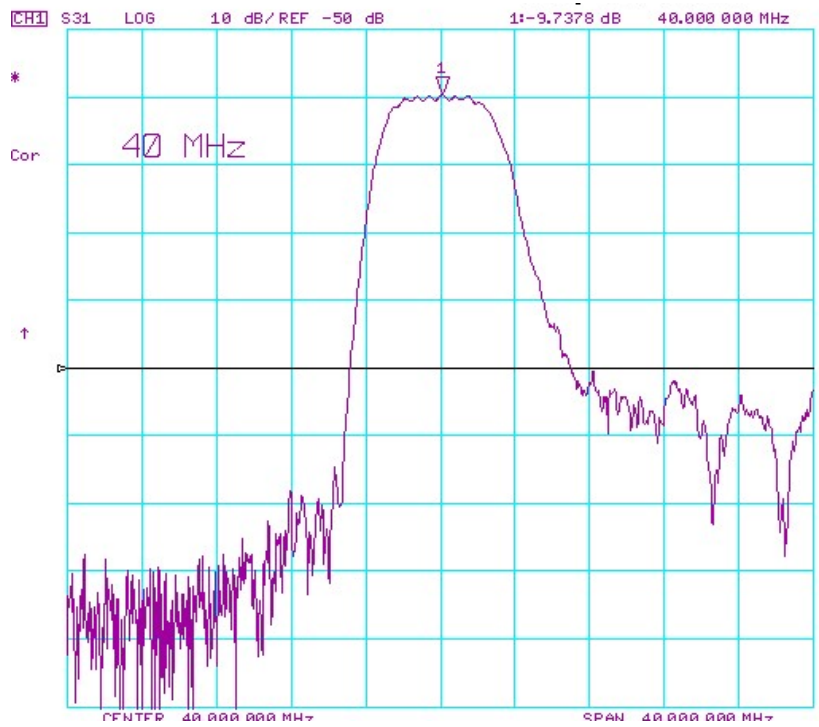
RoHS Compliant  
Lead free  
Lead-free soldering

### B. ELECTRICAL CHARACTERISTICS:

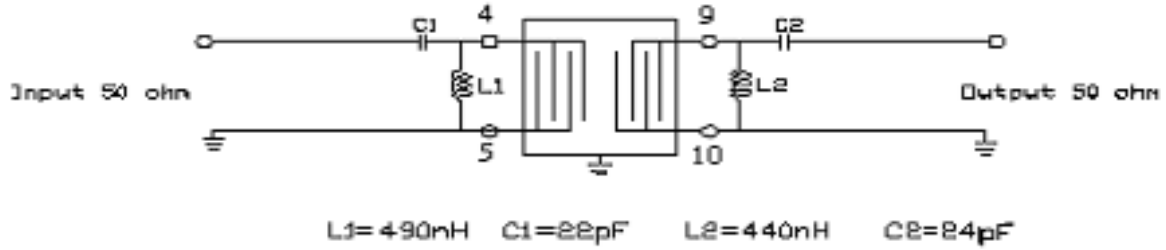
Item		Specification			
	Unit	Min.	Typ.	Max.	
Center Frequency F <sub>c</sub>	MHz	-	40	-	
Insertion Loss IL <sub>min</sub>	dB	-	9.0	12.0	
3dB Bandwidth	MHz	3.5	5.0	-	
Passband Ripple (F <sub>c</sub> -1.75MHz~F <sub>c</sub> +1.75MHz)	dB		1.2	2.0	
Group Delay Ripple (F <sub>c</sub> -1.75MHz~F <sub>c</sub> +1.75MHz)	nS		190	250	
Stopband Attenuation(reference to IL <sub>min</sub> dB)					
F <sub>c</sub> ±5MHz	dB	20	35	-	
27.5~32.5MHz	dB	31	42	-	
47.5~52.5MHz	dB	31	42	-	
0~30 MHz	dB	35	71	-	
50~70 MHz	dB	35	43	-	

Note: IL<sub>min</sub> is the minimum of the pass band attenuation. The center frequency F<sub>c</sub> is the mean value of the upper and lower frequencies at the 3dB filter attenuation level relative to the IL<sub>min</sub>.

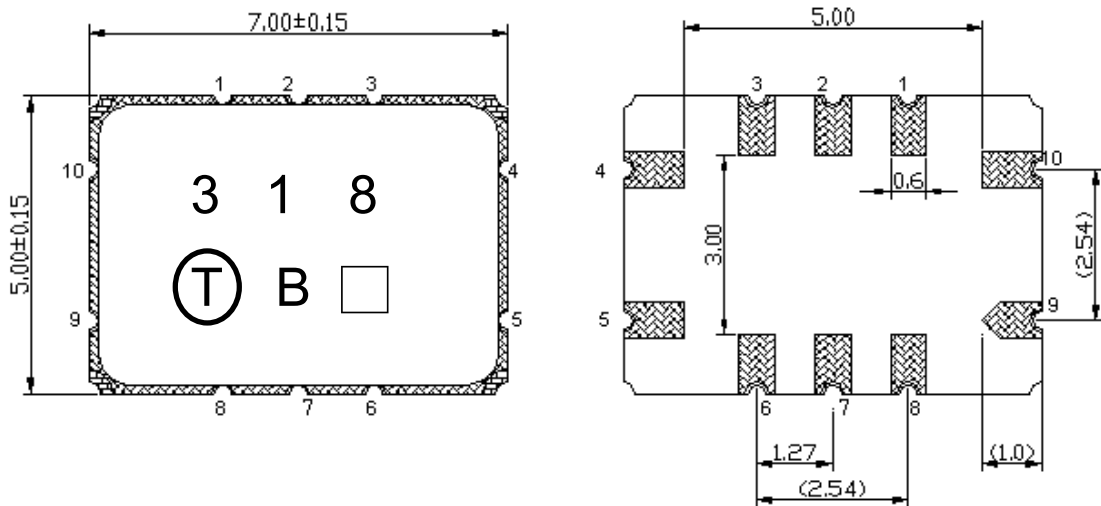
### C. Frequency Characteristics :



**D. MEASUREMENT CIRCUIT:**

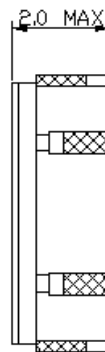


**E. OUTLINE DRAWING:**

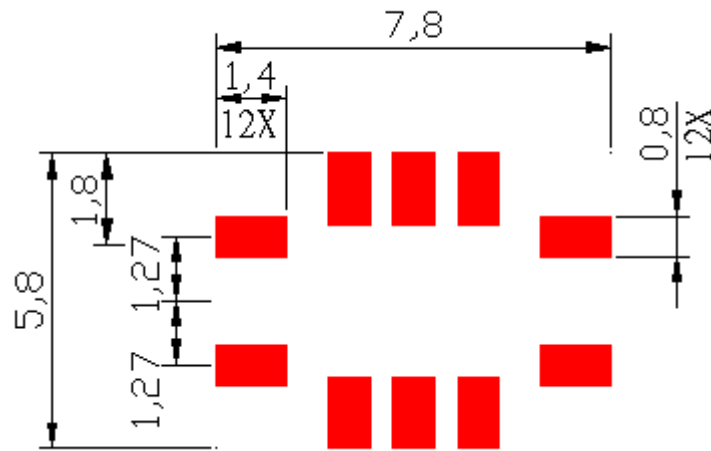


Pin configuration:

- 4: RF Input or Balance Input
- 5: RF Input Ground or Balance Input Return
- 9: RF Output or Balance Output
- 10: RF Output Ground or Balance Output Return
- 1,2,3,6,7,8: Ground
- : Date Code

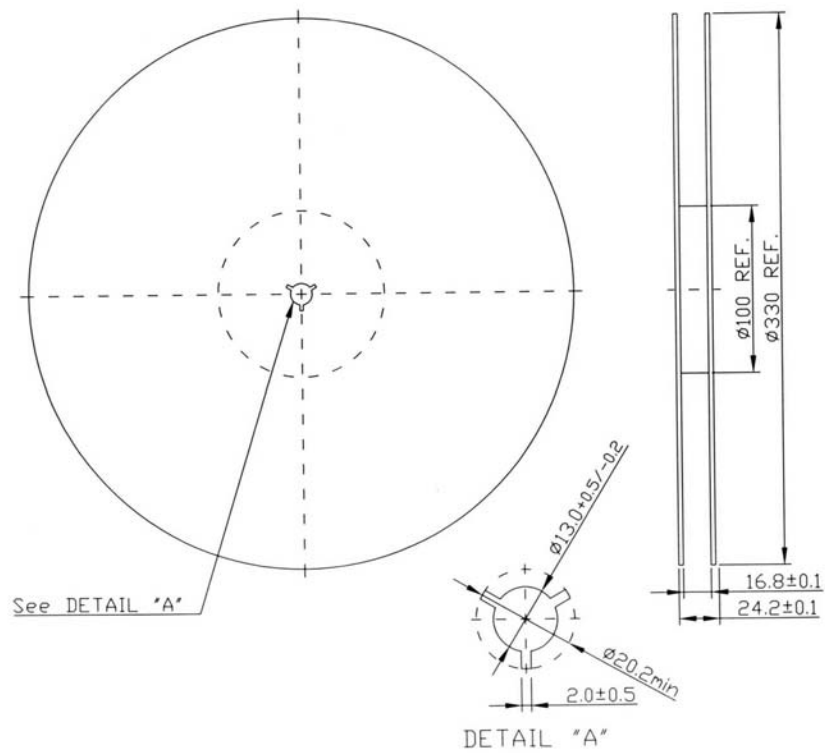


**F. PCB FOOTPRINT:**

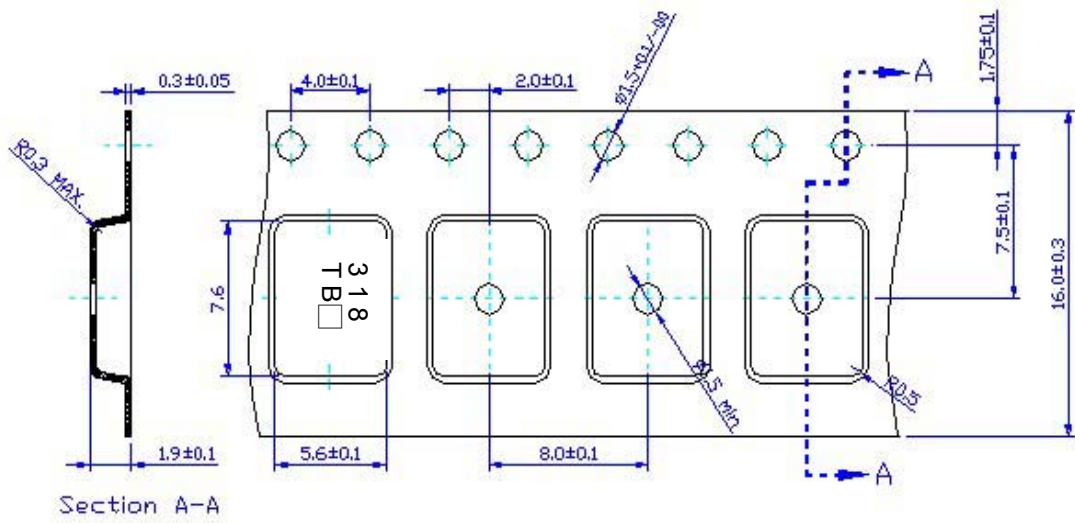


**G. PACKING:**

**1. REEL DIMENSION**



## 2. TAPE DIMENSION



## X-ON Electronics

Largest Supplier of Electrical and Electronic Components

*Click to view similar products for [Signal Conditioning](#) category:*

*Click to view products by [Tai-Saw Technology](#) manufacturer:*

Other Similar products are found below :

[PD0409J5050S2HF](#) [HHS-109-PIN](#) [AFS14A35-1591.50-T3](#) [JP510S](#) [LFB322G45SN1A504](#) [SF2159E](#) [FM-104-PIN](#) [CER0813B](#)  
[MAPDCC0005](#) [3A325](#) [BD0810N50100AHF](#) [DC0710J5005AHF](#) [DC2327J5005AHF](#) [LFL15869MTC1B787](#) [X3C19F1-20S](#)  
[CDBLB455KCAX39-B0](#) [RF1353C](#) [051157-0000](#) [PD0922J5050D2HF](#) [600S150FTRB](#) [1E1305-3](#) [1F1304-3S](#) [TP-103-PIN](#)  
[BD1222J50200AHF](#) [BD1722J50100AHF](#) [2450DP39K5400E](#) [BD0810J50150AHF](#) [BD1722J50200AHF](#) [DS-327-PIN](#) [MACP-008125-](#)  
[CK07F0](#) [DS-329-PIN](#) [DS-313-PIN](#) [TP-104-PIN](#) [TP-101-PIN](#) [HH-128-PIN](#) [8594810000](#) [T-1000-N](#) [JP506S](#) [XC0900P-10S](#) [XC0900B-30S](#)  
[CHE1260-QAG](#) [11305-10](#) [5962-9091202MXA](#) [3A412S](#) [X3C06A4-03S](#) [B39000Z3410A4](#) [DSS-333-PIN](#) [PD2425J5050S2HF](#)  
[B39242B4360P810](#) [B39781B8005P810](#)