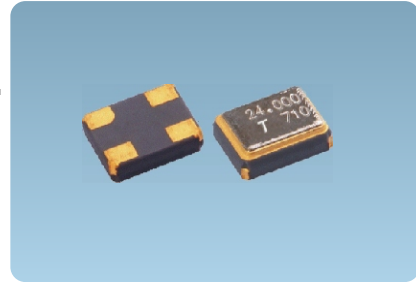


XY Type

2.5x2.0x0.55mm typ
12MHz up to 60MHz



Feature

A small surface mount type crystal unit, especially suited for small-sizing requirements.

- Ultra compact and thin. (2.5x2.0x0.55mm typ.)
- Tight Tolerance 10 ppm available.
- Application : Bluetooth ; Mobile phone ; W-LAN ; Office

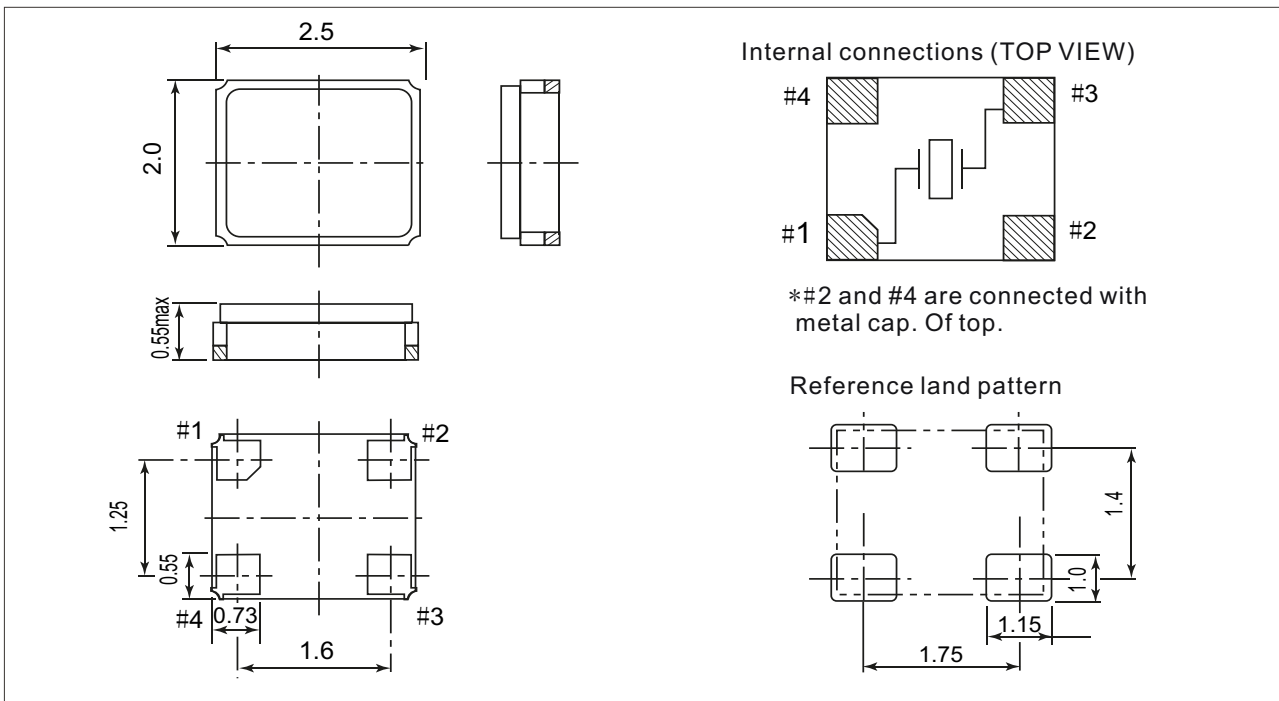
Automation ; Audio & Video.

- Meets the requirements for re-flow profiling using lead-free solder.

Specifications

| Item | Type | XY-Type | | | | |
|-----------------------------|------|--|-----------|----------|----------|----------|
| Frequency Range | | 12~13MHz | 13~16MHz | 16~20MHz | 20~30MHz | 30~60MHz |
| Oscillator Mode | | Fundamental | | | | |
| Load Capacitance | | Series,8pF,10pF,12pF | | | | |
| Drive Level | | 10μW(100μW max.) | | | | |
| Frequency Tolerance | | ±10×10 ⁻⁶ ,±20×10 ⁻⁶ ,±30×10 ⁻⁶ ,±50×10 ⁻⁶ (at 25°C) | | | | |
| Series Resistance | | 200Ω max. | 100Ω max. | 80Ω max. | 60Ω max. | 40Ω max. |
| Operating Temperature Range | | -10~+60°C, -20~+70°C, -40~+85°C | | | | |
| Storage Temperature Range | | -40~+85°C | | | | |
| Packing Unit | | 3000pcs./reel(Ø180) | | | | |

Outline Drawing

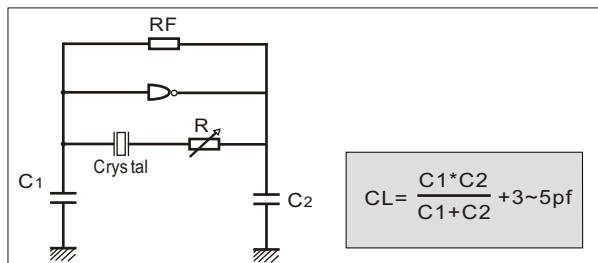


Frequency Stability Vs. Temperature Range

| Temp.(°C) | Ppm | ±5 | ±10 | ±15 |
|-----------|-----|----|-----|-----|
| -10 ~ +60 | | + | ✓ | ✓ |
| -20 ~ +70 | | × | ✓ | ✓ |
| -40 ~ +85 | | × | × | ✓ |

✓Standard +Available(case by case) × Not Available

Oscillation Circuit of Fundamental Mode



X-ON Electronics

Largest Supplier of Electrical and Electronic Components

Click to view similar products for [Crystals](#) category:

Click to view products by [TAITIEN](#) manufacturer:

Other Similar products are found below :

[CX3225GB25000M0PPSZ1](#) [718-13.2-1](#) [MC405 32.0000K-R3:PURE SN](#) [7A-40.000MAAE-T](#) [FL2000085](#) [99-BU](#) [9B-15.360MBBK-B](#) [9C-7.680MBBK-T](#) [H10S-12.000-18-EXT-TR](#) [ABC2-6.000MHZ-D4Z-T](#) [ABLS-20.000MHZ-D2-T](#) [ABS071-32.768KHZ-6-T](#) [R38-32.768-12.5-5PPM-NPB](#) [BTD1062E05A-513](#) [21U15A-21.4MHZ](#) [RTX-781DF1-S-20.950](#) [LFXTAL066198Cutt](#) [9C-14.31818MBBK-T](#) [A-11.000MHZ-27](#) [ABL-27.000MHZ-B4Y-T](#) [ABM11-132-24.000MHZ-T3](#) [ABM3B1-25.000MHZ-D2Y-T](#) [SPT2A-.032768B](#) [SPT2A.032768G](#) [SSPT7F-9PF20-R](#) [FX325BS-38.88EEM1201](#) [LFXTAL065253Cutt](#) [LFXTAL066431Cutt](#) [XT9S20ANA14M7456](#) [XT9SNLANA16M](#) [646G-24-2](#) [7A-24.576MBBK-T](#) [7B-30.000MBBK-T](#) [7A-14.31818MBBK-T](#) [6504-202-1501](#) [6526-202-1501](#) [ABLS-12.000MHZ-B2Y-T](#) [ABLS-10.000MHZ-D3W-T](#) [7A-10.000MBBK-T](#) [SG636PCE-20.000MC](#) [3404](#) [E1SAA18-25.000M TR](#) [CM315D32768EZFT](#) [C1E-24.000-7-2020-R](#) [C1E-19.200-12-1530-X-R](#) [C1E-16.000-12-1530-X-R](#) [FL5000014](#) [EUCA18-3.1872M](#) [FX0800015](#) [425F35E027M0000](#)