

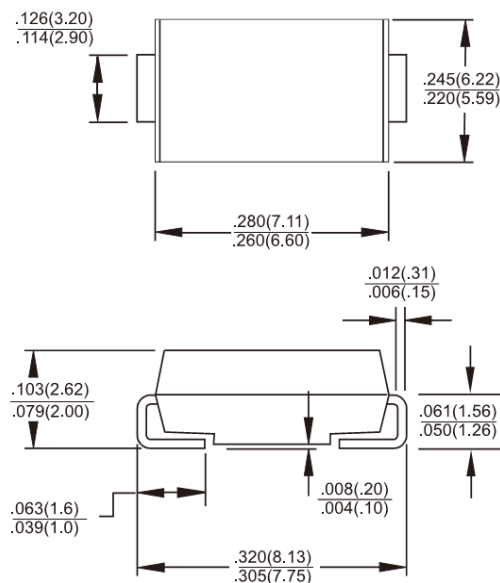
**SMC/DO-214AB**

**Features**

- ◇ Glass passivated junction chip
- ◇ For surface mounted application
- ◇ Low profile package
- ◇ Built-in strain relief, Ideal for automated placement
- ◇ Easy pick and place
- ◇ Esuper fast recovery time for high efficiency
- ◇ High temperature soldering guaranteed:  
260 °C/10 seconds at terminals
- ◇ Plastic material used carries Underwriters  
Laboratory Classification 94V-0
- ◇ Green compound with suffix "G" on packing  
code & prefix "G" on datecode
- ◇ High reliability grade (AEC Q101 specified)

**Mechanical Data**

- ◇ Cases: Molded plastic
- ◇ Epoxy: UL 94V-0 rate flame retardant
- ◇ Terminals: Pure tin plated, lead free, solderable per  
MIL-STD-202, Method 208 guaranteed
- ◇ Polarity: Color band denotes cathode
- ◇ Weight: 0.21 grams
- ◇ Packing: 16mm tape per EIA STD RS-481


**Dimensions in inches and (millimeters)**
**Marking Diagram**


- ES3X = Specific Device Code
- G = Green Compound
- Y = Year
- M = Work Month

**Maximum Ratings and Electrical Characteristics**

Rating at 25 °C ambient temperature unless otherwise specified.

Single phase, half wave, 60 Hz, resistive or inductive load.

For capacitive load, derate current by 20%

Type Number	Symbo l	ES 3A	ES 3B	ES 3C	ES 3D	ES 3F	ES 3G	ES 3H	ES 3J	Units
Maximum Recurrent Peak Reverse Voltage	$V_{RRM}$	50	100	150	200	300	400	500	600	V
Maximum RMS Voltage	$V_{RMS}$	35	70	105	140	210	280	350	420	V
Maximum DC Blocking Voltage	$V_{DC}$	50	100	150	200	300	400	500	600	V
Maximum Average Forward Rectified see fig. 1	$I_{F(AV)}$	3								A
Peak Forward Surge Current, 8.3 ms Single Half Sine-wave Superimposed on Rated Load (IEDEC method)	$I_{FSM}$	100								A
Maximum Instantaneous Forward Voltage (Note 1) @ 3 A	$V_F$	0.95			1.3			1.7		V
Maximum DC Reverse Current @ $T_A=25\text{ }^\circ\text{C}$ at Rated DC Blocking Voltage @ $T_A=100\text{ }^\circ\text{C}$	$I_R$	10				500				uA
Typical Junction Capacitance (Note 2)	$C_j$	45				30				pF
Typical Reverse Recovery Time (Note 3)	$T_{rr}$	35								nS
Typical Thermal Resistance	$R_{\theta JA}$ $R_{\theta JL}$	47				12				°C/W
Operating Temperature Range	$T_J$	- 55 to + 150								°C
Storage Temperature Range	$T_{STG}$	- 55 to + 150								°C

Note 1: Pulse Test with PW=300 usec, 1% Duty Cycle

Note 2: Measured at 1 MHz and Applied Reverse Voltage of 4.0V D.C.

Note 3: Reverse Recovery Test Conditions:  $I_F=0.5A$ ,  $I_R=1.0A$ ,  $I_{RR}=0.25A$

## RATINGS AND CHARACTERISTIC CURVES (ES3A THRU ES3J)

FIG. 1 MAXIMUM FORWARD CURRENT DERATING CURVE

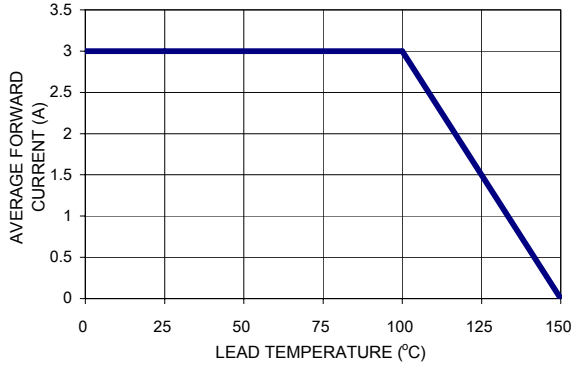


FIG. 2 MAXIMUM NON-REPETITIVE FORWARD SURGE CURRENT

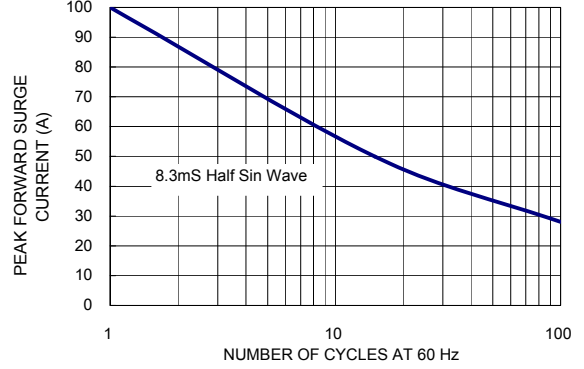


FIG. 3 TYPICAL FORWARD CHARACTERISTICS

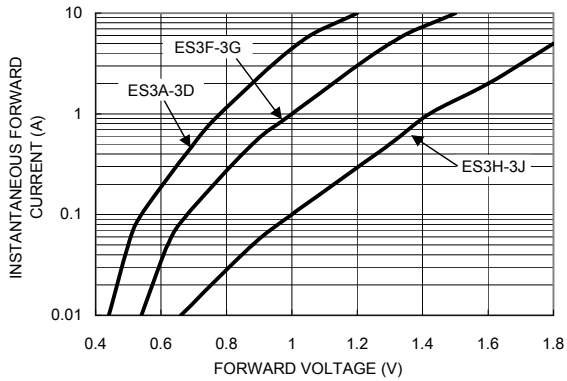


FIG. 4 TYPICAL REVERSE CHARACTERISTICS

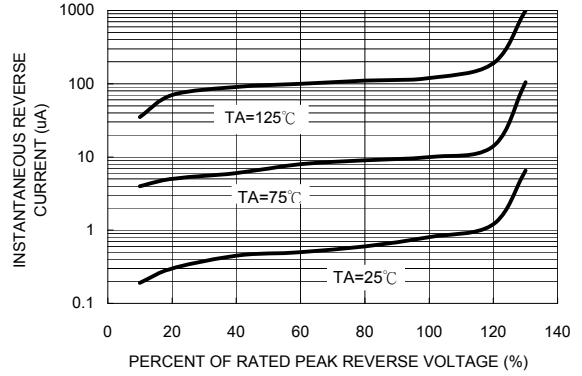


FIG. 5 TYPICAL JUNCTION CAPACITANCE

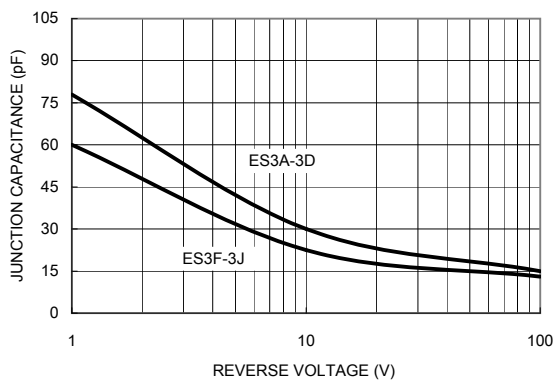


FIG. 6 TYPICAL TRANSIENT THERMAL IMPEDANCE

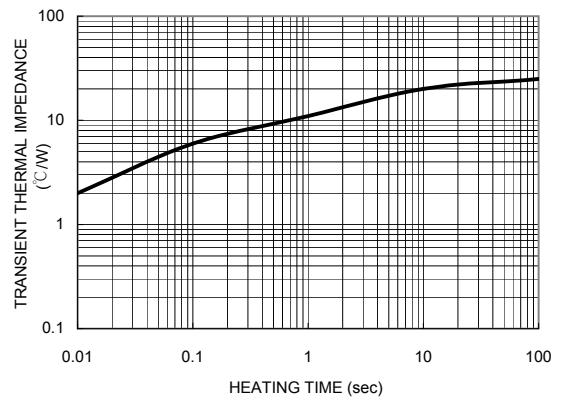
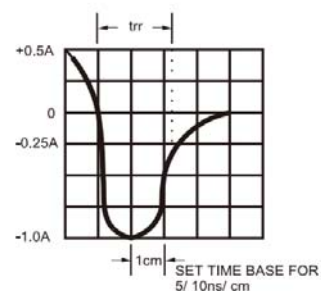
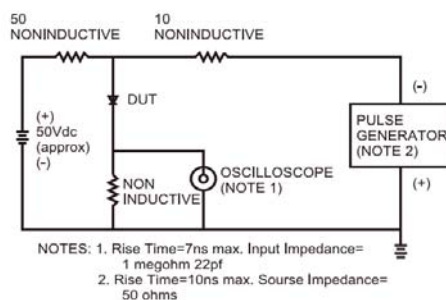


FIG. 7- REVERSE RECOVERY TIME CHARACTERISTIC AND TEST CIRCUIT DIAGRAM



## X-ON Electronics

Largest Supplier of Electrical and Electronic Components

*Click to view similar products for [Schottky Diodes & Rectifiers](#) category:*

*Click to view products by [Taiwan Semiconductor](#) manufacturer:*

Other Similar products are found below :

[CUS06\(TE85L,Q,M\)](#) [MA4E2039](#) [D1FH3-5063](#) [MBR0530L-TP](#) [MBR10100CT-BP](#) [MBR30H100MFST1G](#) [MMBD301M3T5G](#) [PMAD1103-LF](#) [PMAD1108-LF](#) [RB160M-50TR](#) [RB520S-30](#) [RB551V-30](#) [DD350N18K](#) [DZ435N40K](#) [DZ600N16K](#) [BAS16E6433HTMA1](#) [BAS 3010S-02LRH E6327](#) [BAT 54-02LRH E6327](#) [IDL02G65C5XUMA1](#) [NSR05F40QNXT5G](#) [NSVR05F40NXT5G](#) [JANS1N6640](#) [SB07-03C-TB-H](#) [SB1003M3-TL-W](#) [SBAT54CWT1G](#) [SBM30-03-TR-E](#) [SBS818-TL-E](#) [SK32A-LTP](#) [SK33A-TP](#) [SK34A-TP](#) [SK34B-TP](#) [SMD1200PL-TP](#) [ACDBN160-HF](#) [SS3003CH-TL-E](#) [STPS30S45CW](#) [PDS3100Q-7](#) [GA01SHT18](#) [CRS10I30A\(TE85L,QM\)](#) [MBR1240MFST1G](#) [MBRB30H30CT-1G](#) [BAS28E6433HTMA1](#) [BAS 70-02L E6327](#) [HSB123JTR-E](#) [JANTX1N5712-1](#) [VS-STPS40L45CW-N3](#) [DD350N12K](#) [SB007-03C-TB-E](#) [SB10015M-TL-E](#) [SB1003M3-TL-E](#) [SK110-LTP](#)