

## Small Signal Product

## Surface Mount Glass Passivated Silicon Rectifiers

**FEATURES**

- Plastic package has carries underwriters
- Ideal for automated placement
- Surge overload rating to 30 Amperes peak
- Reliable low cost construction utilizing molded plastic technique results in in-expensive product
- Compliant to RoHS Directive 2011/65/EU and in accordance to WEEE 2002/96/EC
- Halogen-free according to IEC 61249-2-21 definition


**MELF**

**MECHANICAL DATA**
**Case:** MELF

Molding compound, UL flammability classification rating 94V-0

Packing code with suffix "G" means green compound (halogen-free)

**Mounting position:** Any

**Polarity:** Indicated by silver cathode band

**Weight:** 0.12 g (approximately)

| MAXIMUM RATINGS AND ELECTRICAL CHARACTERISTICS (T <sub>A</sub> =25°C unless otherwise noted) |                    |              |             |             |             |             |             |             |      |
|--|--------------------|--------------|-------------|-------------|-------------|-------------|-------------|-------------|------|
| PARAMETER  | SYMBOL             | LL40<br>01G  | LL40<br>02G | LL40<br>03G | LL40<br>04G | LL40<br>05G | LL40<br>06G | LL40<br>07G | UNIT |
| Maximum repetitive peak reverse voltage  | V <sub>RRM</sub>   | 50           | 100         | 200         | 400         | 600         | 800         | 1000        | V    |
| Maximum RMS voltage  | V <sub>RMS</sub>   | 35           | 70          | 140         | 280         | 420         | 560         | 700         | V    |
| Maximum DC blocking voltage  | V <sub>DC</sub>    | 50           | 100         | 200         | 400         | 600         | 800         | 1000        | V    |
| Maximum average forward rectified current  | I <sub>F(AV)</sub> | 1            |             |             |             |             |             |             | A    |
| Peak forward surge current, 8.3 ms single half sine-wave superimposed on rated load          | I <sub>FSM</sub>   | 30           |             |             |             |             |             |             | A    |
| Maximum instantaneous forward voltage (Note 1) @ 1 A   | V <sub>F</sub>     | 1.1          |             |             |             |             |             |             | V    |
| Maximum reverse current @ rated VR<br>T <sub>J</sub> =25 °C<br>T <sub>J</sub> =125 °C        | I <sub>R</sub>     | 5<br>100     |             |             |             |             |             |             | μA   |
| Typical junction capacitance (Note 2)  | C <sub>J</sub>     | 15           |             |             |             |             |             |             | pF   |
| Typical thermal resistance   | R <sub>θJC</sub>   | 50           |             |             |             |             |             |             | °C/W |
| Operating junction temperature range   | T <sub>J</sub>     | - 65 to +150 |             |             |             |             |             |             | °C   |
| Storage temperature range  | T <sub>STG</sub>   | - 65 to +150 |             |             |             |             |             |             | °C   |

Note 1: Pulse test with PW=300μs, 1% duty cycle

Note 2: Measured at 1 MHz and Applied Reverse Voltage of 4.0V D.C.

Small Signal Product

RATINGS AND CHARACTERISTICS CURVES

( $T_A=25^\circ\text{C}$  unless otherwise noted)

Fig.1 Forward Current Derating Curve

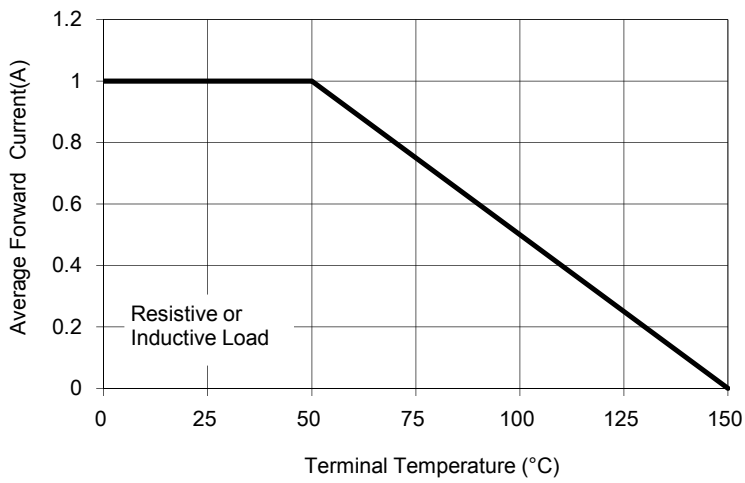


Fig. 2 Maximum Non-Repetitive Peak Forward Surge Current

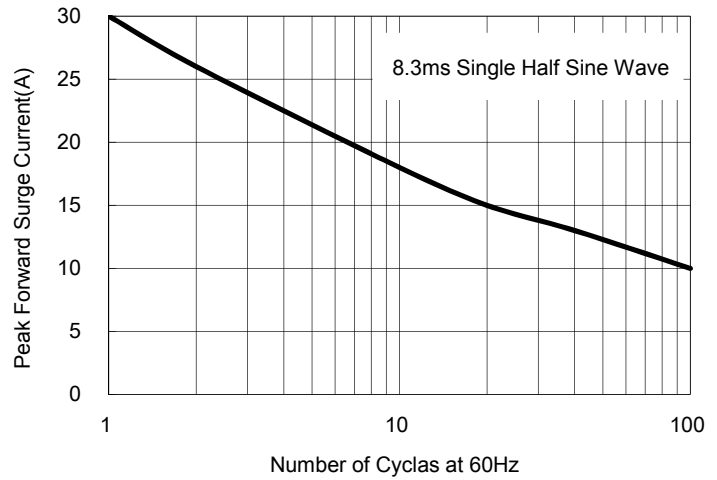


Fig. 3 Instantaneous Forward Characteristics

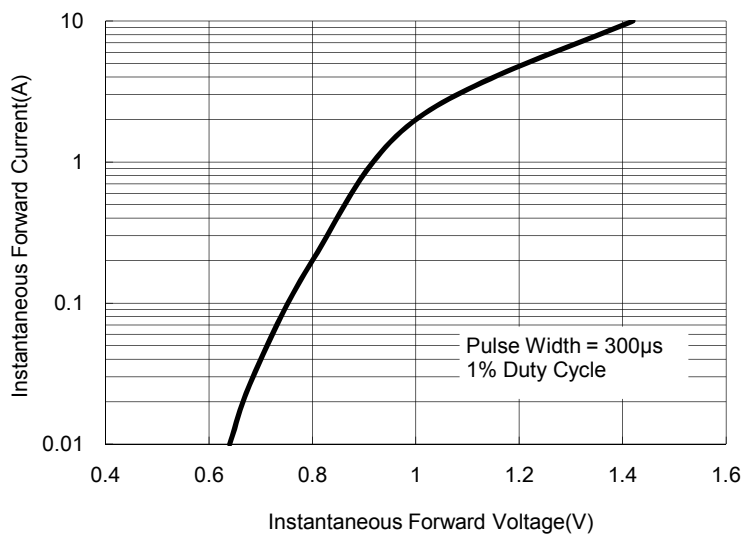


Fig. 4 Typical Reverse Characteristics

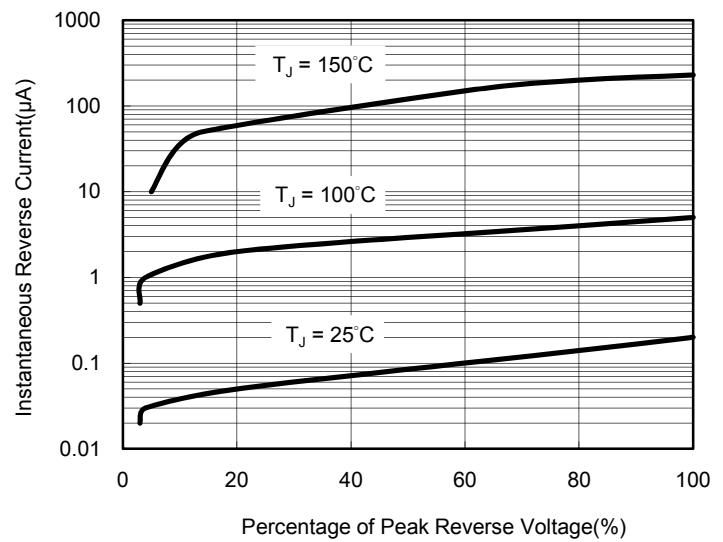


Fig. 5 Typical Junction Capacitance

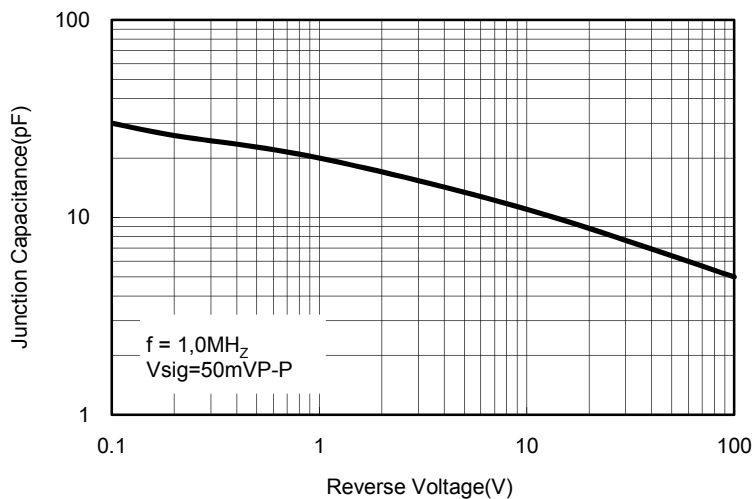
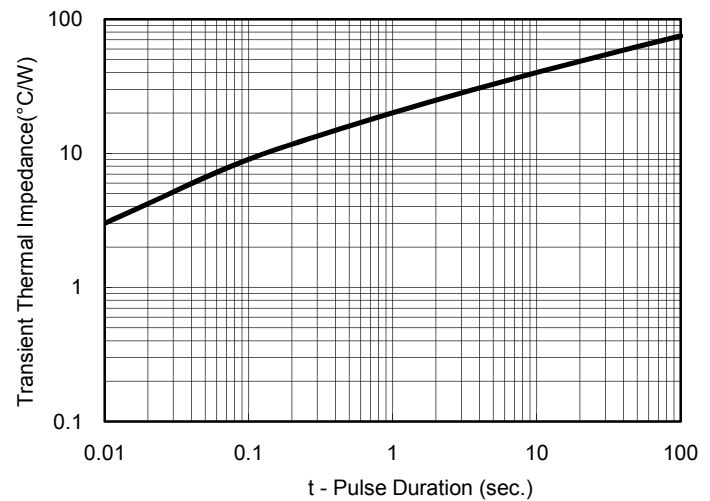


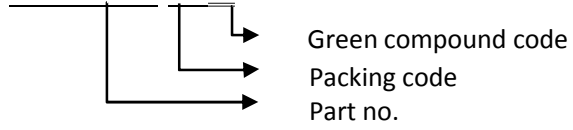
Fig. 6 Typical Transient Thermal Impedance



Small Signal Product

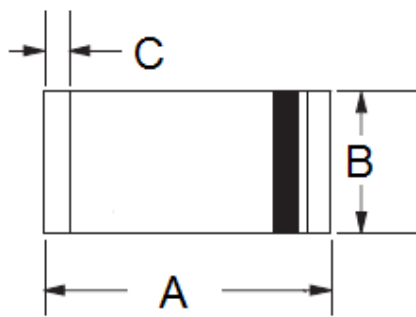
ORDER INFORMATION (EXAMPLE)

LL4001G LOG



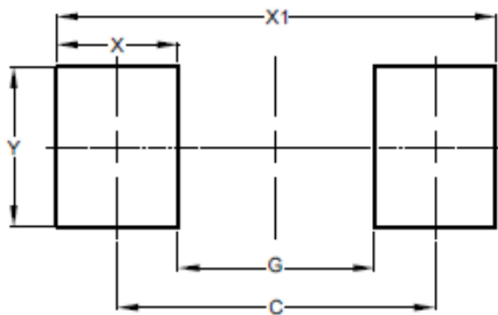
PACKAGE OUTLINE DIMENSIONS

**MELF**



| DIM. | Unit (mm) |      | Unit (inch) |       |
|------|-----------|------|-------------|-------|
|      | Min       | Max  | Min         | Max   |
| A    | 4.80      | 5.50 | 0.189       | 0.217 |
| B    | 2.25      | 2.67 | 0.089       | 0.105 |
| C    | 0.30      | 0.60 | 0.012       | 0.024 |

SUGGEST PAD LAYOUT



| DIM. | Unit (mm) | Unit (inch) |
|------|-----------|-------------|
|      | Typ.      | Typ.        |
| C    | 4.80      | 0.189       |
| G    | 3.30      | 0.130       |
| X    | 1.50      | 0.059       |
| X1   | 6.30      | 0.248       |
| Y    | 2.70      | 0.106       |

### Notice

Specifications of the products displayed herein are subject to change without notice. TSC or anyone on its behalf, assumes no responsibility or liability for any errors or inaccuracies.

Information contained herein is intended to provide a product description only. No license, express or implied, to any intellectual property rights is granted by this document. Except as provided in TSC's terms and conditions of sale for such products, TSC assumes no liability whatsoever, and disclaims any express or implied warranty, relating to sale and/or use of TSC products including liability or warranties relating to fitness for a particular purpose, merchantability, or infringement of any patent, copyright, or other intellectual property right.

The products shown herein are not designed for use in medical, life-saving, or life-sustaining applications. Customers using or selling these products for use in such applications do so at their own risk and agree to fully indemnify TSC for any damages resulting from such improper use or sale.

## X-ON Electronics

Largest Supplier of Electrical and Electronic Components

*Click to view similar products for [Rectifiers](#) category:*

*Click to view products by [Taiwan Semiconductor](#) manufacturer:*

Other Similar products are found below :

[D91A](#) [DA24F4100L](#) [DD89N1600K-A](#) [DD89N16K-K](#) [RL252-TP](#) [DLA11C-TR-E](#) [DSA17G](#) [1N4005-TR](#) [BAV199-TP](#) [UFS120Je3/TR13](#)  
[JANS1N6640US](#) [VS-80-1293](#) [DD89N16K](#) [DD89N16K-A](#) [481235F](#) [DSP10G-TR-E](#) [067907F](#) [MS306](#) [ND104N08K](#) [SPA2003-B-D-A01](#) [VS-](#)  
[80-6193](#) [VS-66-9903](#) [VGF0136AB](#) [US2JFL-TP](#) [UFS105Je3/TR13](#) [A1N5404G-G](#) [ACGRA4007-HF](#) [ACGRB207-HF](#) [RF301B2STL](#)  
[RF501B2STL](#) [UES1306](#) [UES1302](#) [BAV199E6433HTMA1](#) [ACGRC307-HF](#) [ACEFC304-HF](#) [JANTXV1N5660A](#) [UES1106](#) [GS2K-LTP](#)  
[D126A45C](#) [D251N08B](#) [SCHJ22.5K](#) [SM100](#) [SCPA2](#) [SCH10000](#) [SDHD5K](#) [STTH20P035FP](#) [VS-8EWS12S-M3](#) [VS-12FL100S10](#)  
[ACGRA4001-HF](#) [MUR420GP-TP](#)