

1500W, 5V - 170V Surface Mount Transient Voltage Suppressor

FEATURES

- Ideal for automated placement
- Glass passivated junction
- Excellent clamping capability
- Fast response time: Typically less than 1.0ps from 0 V to BV min
- Typical I_R less than 1 μ A above 10V
- Moisture sensitivity level: level 1, per J-STD-020
- AEC-Q101 qualified available: ordering code with suffix "H"
- Compliant to RoHS Directive 2011/65/EU and in accordance to WEEE 2002/96/EC

| KEY PARAMETERS | | |
|----------------|----------------|------|
| PARAMETER | VALUE | UNIT |
| V_{WM} | 5 - 170 | V |
| V_{BR} | 6.4 - 231 | V |
| P_{PK} | 1500 | W |
| T_{JMAX} | 150 | °C |
| Package | DO-214AB (SMC) | |
| Configuration | Single die | |

APPLICATIONS

- Immunization of sensitive devices in automotive, telecommunications, consumer electronics, and industrial equipment from electrostatic discharge (ESD) and transient voltages induced by load switching and lightning.



DO-214AB (SMC)

MECHANICAL DATA

- Case : DO-214AB (SMC)
- Molding compound meets UL 94V-0 flammability rating
- Terminal : Matte tin plated leads, solderable per J-STD-002
- Meet JESD 201 class 2 whisker test
- Polarity : As marked
- Weight : 0.21 g (approximately)

| ABSOLUTE MAXIMUM RATINGS ($T_A = 25^\circ\text{C}$ unless otherwise noted) | | | |
|---|-----------|-------------|------|
| PARAMETER | SYMBOL | VALUE | UNIT |
| Peak power dissipation at $T_A=25^\circ\text{C}$, $t_p=1\text{ms}^{(1)}$ | P_{PK} | 1500 | W |
| Steady state power dissipation at $T_A=25^\circ\text{C}$ | P_D | 5 | W |
| Peak forward surge current, 8.3 ms single half sine-wave superimposed on rated load | I_{FSM} | 200 | A |
| Forward Voltage @ $I_F=100\text{A}$ for Unidirectional only ⁽²⁾ | V_F | 3.5 /5.0 | V |
| Junction temperature | T_J | -55 to +150 | °C |
| Storage temperature | T_{STG} | -55 to +150 | °C |

Notes:

1. Non-repetitive current pulse per Fig. 3 and derated above $T_A=25^\circ\text{C}$ per Fig. 2
2. $V_F=3.5\text{V}$ on SMCJ5.0 - SMCJ90 devices and $V_F=5.0\text{V}$ on SMCJ100 - SMCJ170 devices

Devices for bipolar applications

1. For bidirectional use C or CA suffix for types SMCJ5.0 - types SMCJ170
2. Electrical characteristics apply in both directions

| THERMAL PERFORMANCE | | | |
|--|-----------------|------------|-------------|
| PARAMETER | SYMBOL | TYP | UNIT |
| Junction-to-ambient thermal resistance | $R_{\theta JA}$ | 55 | °C/W |
| Junction-to-case thermal resistance | $R_{\theta JC}$ | 10 | °C/W |

| ELECTRICAL SPECIFICATIONS ($T_A = 25^\circ\text{C}$ unless otherwise noted) | | | | | | | | |
|---|--------------|--|-------|-------------------------------|--|---|--|--|
| Part number | Marking code | Breakdown voltage $V_{BR@I_T}$ (V) | | Test current I_T (mA) | Working stand-off voltage V_{WM} (V) | Maximum Reverse Leakage (Note 3) $I_R@V_{WM}$ (μA) | Maximum peak impulse current (Note 2) I_{PPM} (A) | Maximum clamping voltage (Note 2) $V_C@I_{PPM}$ (V) |
| | | MIN. | MAX. | | | | | |
| SMCJ5.0 | GDD | 6.4 | 7.3 | 10 | 5 | 1000 | 164 | 9.6 |
| SMCJ5.0A | GDE | 6.4 | 7 | 10 | 5 | 1000 | 171 | 9.2 |
| SMCJ6.0 | GDF | 6.67 | 8.15 | 10 | 6 | 1000 | 138 | 11.4 |
| SMCJ6.0A | GDG | 6.67 | 7.37 | 10 | 6 | 1000 | 152 | 10.3 |
| SMCJ6.5 | GDH | 7.22 | 8.82 | 10 | 6.5 | 500 | 128 | 12.3 |
| SMCJ6.5A | GDK | 7.22 | 7.98 | 10 | 6.5 | 500 | 140 | 11.2 |
| SMCJ7.0 | GDL | 7.78 | 9.51 | 10 | 7 | 200 | 118 | 13.3 |
| SMCJ7.0A | GDM | 7.78 | 8.6 | 10 | 7 | 200 | 131 | 12.0 |
| SMCJ7.5 | GDN | 8.33 | 10.30 | 1 | 7.5 | 100 | 110 | 14.3 |
| SMCJ7.5A | GDP | 8.33 | 9.21 | 1 | 7.5 | 100 | 122 | 12.9 |
| SMCJ8.0 | GDQ | 8.89 | 10.9 | 1 | 8 | 50 | 105 | 15.0 |
| SMCJ8.0A | GDR | 8.89 | 9.83 | 1 | 8 | 50 | 115 | 13.6 |
| SMCJ8.5 | GDS | 9.44 | 11.5 | 1 | 8.5 | 20 | 99 | 15.9 |
| SMCJ8.5A | GDT | 9.44 | 10.4 | 1 | 8.5 | 20 | 109 | 14.4 |
| SMCJ9.0 | GDU | 10 | 12.2 | 1 | 9 | 10 | 93 | 16.9 |
| SMCJ9.0A | GDV | 10 | 11.1 | 1 | 9 | 10 | 102 | 15.4 |
| SMCJ10 | GDW | 11.1 | 13.6 | 1 | 10 | 5 | 83 | 18.8 |
| SMCJ10A | GDX | 11.1 | 12.3 | 1 | 10 | 5 | 92 | 17.0 |
| SMCJ11 | GDY | 12.2 | 14.9 | 1 | 11 | 1 | 78 | 20.1 |
| SMCJ11A | GDZ | 12.2 | 13.5 | 1 | 11 | 1 | 86 | 18.2 |
| SMCJ12 | GED | 13.3 | 16.3 | 1 | 12 | 1 | 71 | 22.0 |
| SMCJ12A | GEE | 13.3 | 14.7 | 1 | 12 | 1 | 79 | 19.9 |
| SMCJ13 | GEF | 14.4 | 17.6 | 1 | 13 | 1 | 66 | 23.8 |
| SMCJ13A | GEG | 14.4 | 15.9 | 1 | 13 | 1 | 73 | 21.5 |
| SMCJ14 | GEH | 15.6 | 19.1 | 1 | 14 | 1 | 61 | 25.8 |
| SMCJ14A | GEK | 15.6 | 17.2 | 1 | 14 | 1 | 67 | 23.2 |
| SMCJ15 | GEL | 16.7 | 20.4 | 1 | 15 | 1 | 58 | 26.9 |
| SMCJ15A | GEM | 16.7 | 18.5 | 1 | 15 | 1 | 64 | 24.4 |
| SMCJ16 | GEN | 17.8 | 21.8 | 1 | 16 | 1 | 54 | 28.8 |
| SMCJ16A | GEP | 17.8 | 19.7 | 1 | 16 | 1 | 60 | 26.0 |
| SMCJ17 | GEQ | 18.9 | 23.1 | 1 | 17 | 1 | 51 | 30.5 |
| SMCJ17A | GER | 18.9 | 20.9 | 1 | 17 | 1 | 57 | 27.6 |
| SMCJ18 | GES | 20 | 24.4 | 1 | 18 | 1 | 48 | 32.2 |
| SMCJ18A | GET | 20 | 22.1 | 1 | 18 | 1 | 53 | 29.2 |
| SMCJ20 | GEU | 22.2 | 27.1 | 1 | 20 | 1 | 43 | 35.8 |
| SMCJ20A | GEV | 22.2 | 24.5 | 1 | 20 | 1 | 48 | 32.4 |
| SMCJ22 | GEW | 24.4 | 29.8 | 1 | 22 | 1 | 39 | 39.4 |
| SMCJ22A | GEX | 24.4 | 26.9 | 1 | 22 | 1 | 44 | 35.5 |
| SMCJ24 | GEY | 26.7 | 32.6 | 1 | 24 | 1 | 36 | 43.0 |
| SMCJ24A | GEZ | 26.7 | 29.5 | 1 | 24 | 1 | 40 | 38.9 |
| SMCJ26 | GFD | 28.9 | 35.3 | 1 | 26 | 1 | 33 | 46.6 |
| SMCJ26A | GFE | 28.9 | 31.9 | 1 | 26 | 1 | 37 | 42.1 |
| SMCJ28 | GFF | 31.1 | 38 | 1 | 28 | 1 | 31 | 50.0 |

| ELECTRICAL SPECIFICATIONS (T _A = 25°C unless otherwise noted) | | | | | | | | |
|--|--------------|--|------|--|---|--|---|--|
| Part number | Marking code | Breakdown voltage V _{BR@IT} (V) | | Test current I _T (mA) | Working stand-off voltage V _{WM} (V) | Maximum Reverse Leakage (Note 3) I _{R@VWM} (μA) | Maximum peak impulse current (Note 2) I _{PPM} (A) | Maximum clamping voltage (Note 2) V _{C@IPPM} (V) |
| | | MIN. | MAX. | | | | | |
| SMCJ28A | GFG | 31.1 | 34.4 | 1 | 28 | 1 | 34 | 45.4 |
| SMCJ30 | GFH | 33.3 | 40.7 | 1 | 30 | 1 | 29 | 53.5 |
| SMCJ30A | GFK | 33.3 | 36.8 | 1 | 30 | 1 | 32 | 48.4 |
| SMCJ33 | GFL | 36.7 | 44.9 | 1 | 33 | 1 | 26 | 59.0 |
| SMCJ33A | GFM | 36.7 | 40.6 | 1 | 33 | 1 | 29 | 53.3 |
| SMCJ36 | GFN | 40 | 48.9 | 1 | 36 | 1 | 24 | 64.3 |
| SMCJ36A | GFP | 40 | 44.2 | 1 | 36 | 1 | 27 | 58.1 |
| SMCJ40 | GFQ | 44.4 | 54.3 | 1 | 40 | 1 | 22 | 71.4 |
| SMCJ40A | GFR | 44.4 | 49.1 | 1 | 40 | 1 | 24 | 64.5 |
| SMCJ43 | GFS | 47.8 | 58.4 | 1 | 43 | 1 | 20 | 76.7 |
| SMCJ43A | GFT | 47.8 | 52.8 | 1 | 43 | 1 | 22 | 69.4 |
| SMCJ45 | GFU | 50 | 61.1 | 1 | 45 | 1 | 19 | 80.3 |
| SMCJ45A | GFV | 50 | 55.3 | 1 | 45 | 1 | 21 | 72.7 |
| SMCJ48 | GFW | 53.3 | 65.1 | 1 | 48 | 1 | 18 | 85.5 |
| SMCJ48A | GFX | 53.3 | 58.9 | 1 | 48 | 1 | 20 | 77.4 |
| SMCJ51 | GFY | 56.7 | 69.3 | 1 | 51 | 1 | 17 | 91.1 |
| SMCJ51A | GFZ | 56.7 | 62.7 | 1 | 51 | 1 | 19 | 82.4 |
| SMCJ54 | GGD | 60 | 73.3 | 1 | 54 | 1 | 16 | 96.3 |
| SMCJ54A | GGE | 60 | 66.3 | 1 | 54 | 1 | 18 | 87.1 |
| SMCJ58 | GGF | 64.4 | 78.7 | 1 | 58 | 1 | 15 | 103 |
| SMCJ58A | GGG | 64.4 | 71.2 | 1 | 58 | 1 | 16 | 93.6 |
| SMCJ60 | GGH | 66.7 | 81.5 | 1 | 60 | 1 | 14 | 107 |
| SMCJ60A | GGK | 66.7 | 73.7 | 1 | 60 | 1 | 16 | 96.8 |
| SMCJ64 | GGL | 71.1 | 86.9 | 1 | 64 | 1 | 13.8 | 114 |
| SMCJ64A | GGM | 71.1 | 78.6 | 1 | 64 | 1 | 15 | 103 |
| SMCJ70 | GGN | 77.8 | 95.1 | 1 | 70 | 1 | 12.6 | 125 |
| SMCJ70A | GGP | 77.8 | 86 | 1 | 70 | 1 | 13.9 | 113 |
| SMCJ75 | GGQ | 83.3 | 102 | 1 | 75 | 1 | 11.7 | 134 |
| SMCJ75A | GGR | 83.3 | 92.1 | 1 | 75 | 1 | 13 | 121 |
| SMCJ78 | GGS | 86.7 | 106 | 1 | 78 | 1 | 11.3 | 139 |
| SMCJ78A | GGT | 86.7 | 95.8 | 1 | 78 | 1 | 12.5 | 126 |
| SMCJ85 | GGU | 94.4 | 115 | 1 | 85 | 1 | 10.4 | 151 |
| SMCJ85A | GGV | 94.4 | 104 | 1 | 85 | 1 | 11.5 | 137 |
| SMCJ90 | GGW | 100 | 122 | 1 | 90 | 1 | 9.8 | 160 |
| SMCJ90A | GGX | 100 | 111 | 1 | 90 | 1 | 10.7 | 146 |
| SMCJ100 | GGY | 111 | 136 | 1 | 100 | 1 | 8.8 | 179 |
| SMCJ100A | GGZ | 111 | 123 | 1 | 100 | 1 | 9.7 | 162 |
| SMCJ110 | GHD | 122 | 149 | 1 | 110 | 1 | 8 | 196 |
| SMCJ110A | GHE | 122 | 135 | 1 | 110 | 1 | 8.9 | 177 |
| SMCJ120 | GHF | 133 | 163 | 1 | 120 | 1 | 7.3 | 214 |
| SMCJ120A | GHG | 133 | 147 | 1 | 120 | 1 | 8.1 | 193 |
| SMCJ130 | GHH | 144 | 176 | 1 | 130 | 1 | 6.8 | 231 |
| SMCJ130A | GHK | 144 | 159 | 1 | 130 | 1 | 7.5 | 209 |
| SMCJ150 | GHL | 167 | 204 | 1 | 150 | 1 | 5.8 | 266 |
| SMCJ150A | GHM | 167 | 185 | 1 | 150 | 1 | 6.4 | 243 |
| SMCJ160 | GHN | 178 | 218 | 1 | 160 | 1 | 5.4 | 287 |
| SMCJ160A | GHP | 178 | 197 | 1 | 160 | 1 | 6 | 259 |
| SMCJ170 | GHQ | 189 | 231 | 1 | 170 | 1 | 5.1 | 304 |
| SMCJ170A | GHR | 189 | 209 | 1 | 170 | 1 | 5.7 | 275 |

Notes:

1. V_{BR} measure after I_T applied for 300μs, I_T=square wave pulse or equivalent
2. Surge current waveform per Figure. 3 and derate per Figure. 2
3. For bipolar types having V_{WM} of 10 V and under, the I_R limit is doubled
4. All terms and symbols are consistent with ANSI/IEEE C62.35

| ORDERING INFORMATION | | |
|--|----------------|--------------------------|
| ORDERING CODE (Note 1, 2, 3) | PACKAGE | PACKING |
| SMCJxxxxHR7G | SMC | 850 / 7" Plastic reel |
| SMCJxxxxHR6G | SMC | 3,000 / 13" Paper reel |
| SMCJxxxxHM6G | SMC | 3,000 / 13" Plastic reel |
| SMCJxxxx R7G | SMC | 850 / 7" Plastic reel |
| SMCJxxxx R6G | SMC | 3,000 / 13" Paper reel |
| SMCJxxxx M6G | SMC | 3,000 / 13" Plastic reel |
| SMCJxxxxHV7G | Matrix SMC | 850 / 7" Plastic reel |
| SMCJxxxxHV6G | Matrix SMC | 3,000 / 13" Plastic reel |
| SMCJxxxx V7G | Matrix SMC | 850 / 7" Plastic reel |
| SMCJxxxx V6G | Matrix SMC | 3,000 / 13" Plastic reel |
| SMCJxxxxHR7 | SMC | 850 / 7" Plastic reel |
| SMCJxxxxHR6 | SMC | 3,000 / 13" Paper reel |
| SMCJxxxxHM6 | SMC | 3,000 / 13" Plastic reel |
| SMCJxxxx R7 | SMC | 850 / 7" Plastic reel |
| SMCJxxxx R6 | SMC | 3,000 / 13" Paper reel |
| SMCJxxxx M6 | SMC | 3,000 / 13" Plastic reel |
| SMCJxxxxHV7 | Matrix SMC | 850 / 7" Plastic reel |
| SMCJxxxxHV6 | Matrix SMC | 3,000 / 13" Plastic reel |
| SMCJxxxx V7 | Matrix SMC | 850 / 7" Plastic reel |
| SMCJxxxx V6 | Matrix SMC | 3,000 / 13" Plastic reel |

Note 1:

"xxx" defines voltage from 5.0V (SMCJ5.0) to 170V (SMCJ170A)

Note 2:

"H" means AEC-Q101 qualified

Note 3:

"G" means green compound (halogen free)

CHARACTERISTICS CURVES

($T_A = 25^\circ\text{C}$ unless otherwise noted)

Fig.1 Peak Pulse Power Rating Curve

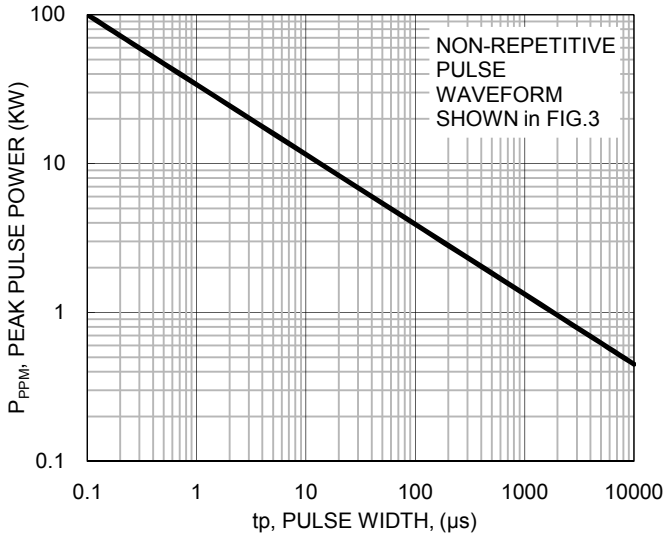


Fig.2 Pulse Derating Curve

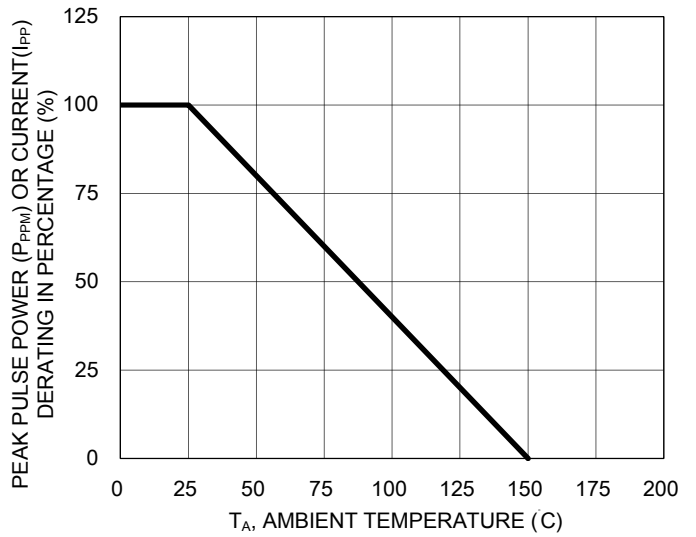


Fig.3 Clamping Power Pulse Waveform

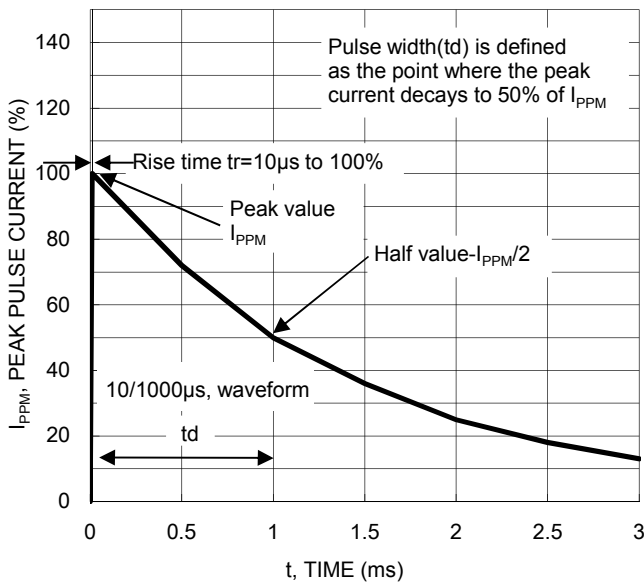
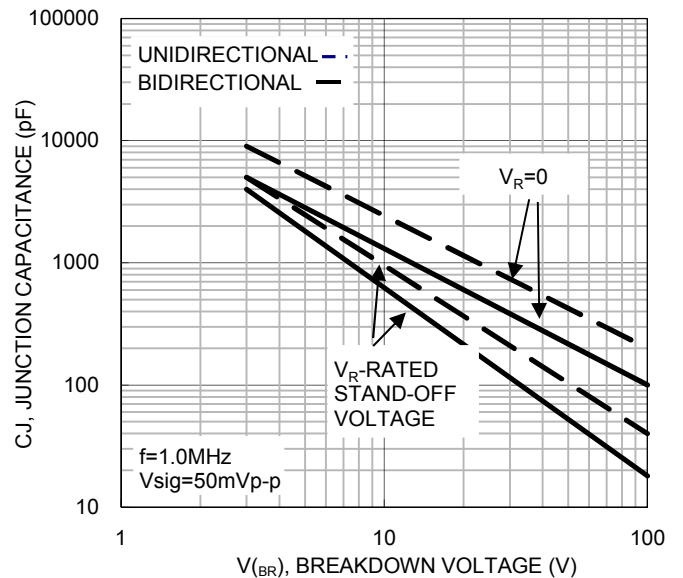


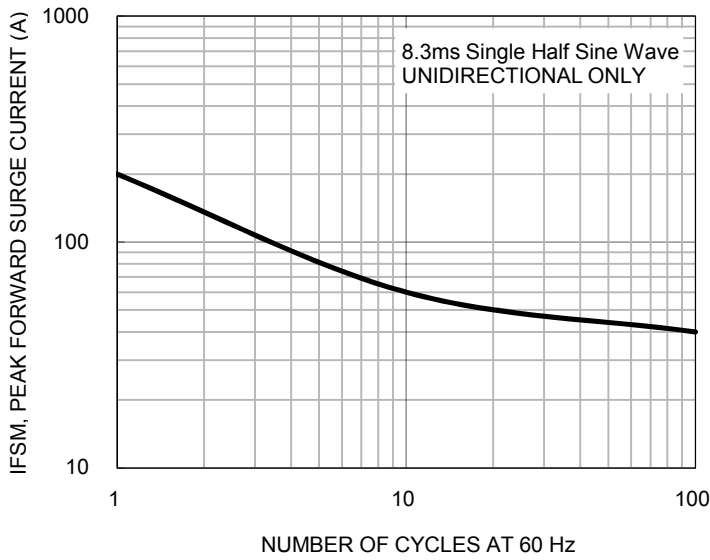
Fig.4 Typical Junction Capacitance



CHARACTERISTICS CURVES

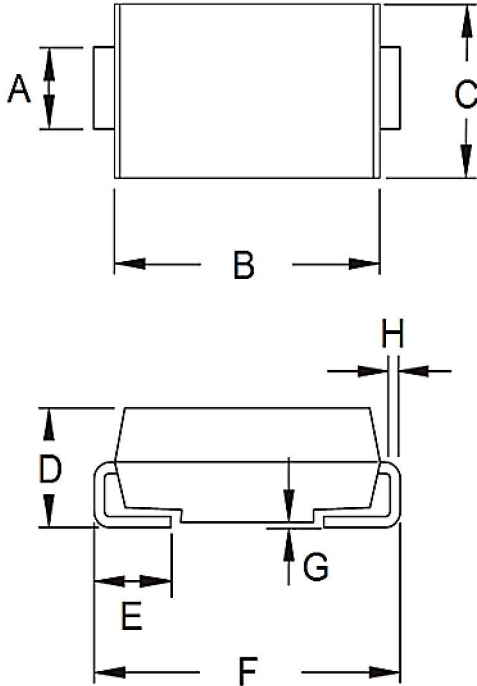
($T_A = 25^\circ\text{C}$ unless otherwise noted)

Fig.5 Maximum Non-repetitive Forward Surge Current



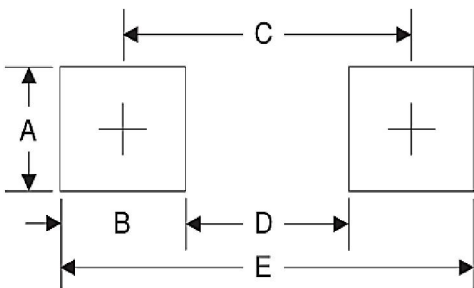
PACKAGE OUTLINE DIMENSIONS

DO-214AB (SMC)



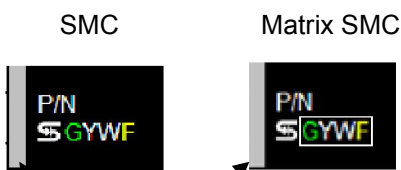
| DIM. | Unit (mm) | | Unit (inch) | |
|------|-----------|------|-------------|-------|
| | Min. | Max. | Min. | Max. |
| A | 2.90 | 3.20 | 0.114 | 0.126 |
| B | 6.60 | 7.11 | 0.260 | 0.280 |
| C | 5.59 | 6.22 | 0.220 | 0.245 |
| D | 2.00 | 2.62 | 0.079 | 0.103 |
| E | 1.00 | 1.60 | 0.039 | 0.063 |
| F | 7.75 | 8.13 | 0.305 | 0.320 |
| G | 0.10 | 0.20 | 0.004 | 0.008 |
| H | 0.15 | 0.31 | 0.006 | 0.012 |

SUGGESTED PAD LAYOUT



| Symbol | Unit (mm) | Unit (inch) |
|--------|-----------|-------------|
| A | 3.30 | 0.130 |
| B | 2.50 | 0.098 |
| C | 6.80 | 0.268 |
| D | 4.40 | 0.173 |
| E | 9.40 | 0.370 |

MARKING DIAGRAM



- P/N =Marking Code
- G =Green Compound
- YW =Date Code
- F =Factory Code

Note: Cathode band for unidirectional products only

Notice

Specifications of the products displayed herein are subject to change without notice. TSC or anyone on its behalf, assumes no responsibility or liability for any errors or inaccuracies.

Information contained herein is intended to provide a product description only. No license, express or implied, to any intellectual property rights is granted by this document. Except as provided in TSC's terms and conditions of sale for such products, TSC assumes no liability whatsoever, and disclaims any express or implied warranty, relating to sale and/or use of TSC products including liability or warranties relating to fitness for a particular purpose, merchantability, or infringement of any patent, copyright, or other intellectual property right.

The products shown herein are not designed for use in medical, life-saving, or life-sustaining applications. Customers using or selling these products for use in such applications do so at their own risk and agree to fully indemnify TSC for any damages resulting from such improper use or sale.

X-ON Electronics

Largest Supplier of Electrical and Electronic Components

Click to view similar products for TVS Diodes - Transient Voltage Suppressors category:

Click to view products by Taiwan Semiconductor manufacturer:

Other Similar products are found below :

[60KS200C](#) [D12V0H1U2WS-7](#) [PSR05-LF-T7](#) [DESD5V0U1BB-7](#) [P6KE39CA-TP](#) [JAN1N6461](#) [SMAJ440A-TP](#) [SMLJ30CA-TP](#)
[ESD0P8RFL E6327](#) [ESD101-B1-02ELS E6327](#) [ESD103-B1-02EL E6327](#) [ESD105-B1-02EL E6327](#) [ESD112-B1-02EL E6327](#)
[ESD119B1W01005E6327XTSA1](#) [ESD5V0L1B02VH6327XTSA1](#) [T1042NLT](#) [3.0SMCJ36A-F](#) [JANTX1N6126A](#) [JANTX1N6465](#)
[DESD5V0U1BL-7B](#) [ESD200-B1-CSP0201 E6327](#) [ESD203-B1-02EL E6327](#) [SM12-7](#) [SMF8.0A-TP](#) [SMLJ45CA-TP](#) [CEN955 W/DATA](#)
[P6KE15CA-TP](#) [ESD101-B1-02EL E6327](#) [P6SMBJ20CA](#) [JANTX1N6163A](#) [SR2835ESKG](#) [SA90CA](#) [SA130A](#) [SMLJ40CA-TP](#) [ESD110-B1-](#)
[02ELS E6327](#) [ESD205-B1-02ELS E6327](#) [ESD208-B1-02ELS E6327](#) [PTVS12VZ1USKNYL](#) [3.0SMCJ24A-13](#) [3.0SMCJ30A-13](#) [30KPA36A-](#)
[LF](#) [30KPA48CALF](#) [3.0SMCJ28A-13](#) [3.0SMCJ5.0A-13](#) [TVS4201MR6T1G](#) [VS10P15C-LF](#) [VTVS9V4ASMF-M3-08](#) [RSA30LTE25](#)
[1.5KE100CA-B](#) [1.5KE400C-B](#)