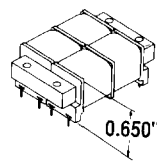
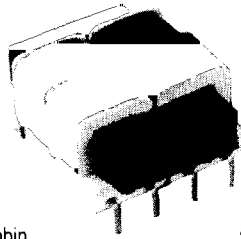
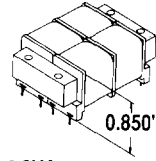




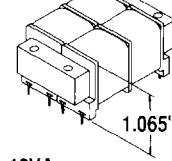
TAMURA LOW PROFILE, PLUG-IN, POWER TRANSFORMERS



2.5VA



6.0VA



12VA

FEATURES

- Three Flange Bobbin.
- 1500V RMS Hipot.
- 115/230VAC, 50/60Hz., Dual Primary.
- Low Profile: 0.65", 0.85", 1.065" Heights.
- 3 Sizes: 2.5, 6.0 and 12VA Ratings.
- NL-FL Regulation: 30%; 12VA, 20%.
- Tube Packaged.
- 80 Models Stocked.
- Competitive Prices.
- Drop-in compatibility.
- DC Power Supply Models.
- 120M Xfmrs Shipped/Year.

LOW PROFILE SERIES MODELS and RATINGS

MODEL No.	SECONDARY RATINGS ¹		VA	PRICE (qty)			
	SERIES	PARALLEL		1-9	10-24	25-99	100up
3FL-10-250	10 VCT @ 2.500A	5V @ 0.500A	2.5	\$7.25	\$6.55	\$6.15	\$5.45
3FL-10-200	10 VCT @ 2.000A	5V @ 0.400A	2.5	8.00	7.20	6.80	6.00
3FL-10-1200	10 VCT @ 1.200A	5V @ 2.400A	12.0	10.00	9.00	8.50	7.50
3FL-12-200	12.6 VCT @ 0.200A	6.3V @ 0.400A	2.5	7.25	6.55	6.15	5.45
3FL-12-475	12.6 VCT @ 0.475A	6.3V @ 0.950A	6.0	8.00	7.20	6.80	6.00
3FL-12-950	12.6 VCT @ 0.950A	6.3V @ 1.900A	12.0	10.00	9.00	8.50	7.50
3FL-16-150	16 VCT @ 0.150A	8V @ 0.300A	2.5	7.25	6.55	6.15	5.45
3FL-16-350	16 VCT @ 0.350A	8V @ 0.700A	6.0	8.00	7.20	6.80	6.00
3FL-16-700	16 VCT @ 0.700A	8V @ 1.400A	12.0	10.00	9.00	8.50	7.50
3FL-20-125	20 VCT @ 0.125A	10V @ 0.250A	2.5	7.25	6.55	6.15	5.45
3FL-20-300	20 VCT @ 0.300A	10V @ 0.600A	6.0	8.00	7.20	6.80	6.00
3FL-20-600	20 VCT @ 0.600A	10V @ 1.200A	12.0	10.00	9.00	8.50	7.50
3FL-24-100	24 VCT @ 0.100A	12V @ 0.200A	2.5	7.25	6.55	6.15	5.45
3FL-24-250	24 VCT @ 0.250A	12V @ 0.500A	6.0	8.00	7.20	6.80	6.00
3FL-24-500	24 VCT @ 0.500A	12V @ 1.000A	12.0	10.00	9.00	8.50	7.50
3FL-30-85	30 VCT @ 0.085A	15V @ 0.170A	2.5	7.25	6.55	6.15	5.45
3FL-30-200	30 VCT @ 0.200A	15V @ 0.400A	6.0	8.00	7.20	6.80	6.00
3FL-30-400	30 VCT @ 0.400A	15V @ 0.800A	12.0	10.00	9.00	8.50	7.50
3FL-34-75	34 VCT @ 0.075A	17V @ 0.150A	2.5	7.25	6.55	6.15	5.45
3FL-34-170	34 VCT @ 0.170A	17V @ 0.340A	6.0	8.00	7.20	6.80	6.00
3FL-34-340	34 VCT @ 0.340A	17V @ 0.680A	12.0	10.00	9.00	8.50	7.50
3FL-40-60	40 VCT @ 0.060A	20V @ 0.120A	2.5	7.25	6.55	6.15	5.45
3FL-40-150	40 VCT @ 0.150A	20V @ 0.300A	6.0	8.00	7.20	6.80	6.00
3FL-40-300	40 VCT @ 0.300A	20V @ 0.600A	12.0	10.00	9.00	8.50	7.50
3FL-56-45	56 VCT @ 0.045A	28V @ 0.090A	2.5	7.25	6.55	6.15	5.45
3FL-56-100	56 VCT @ 0.100A	28V @ 0.200A	6.0	8.00	7.20	6.80	6.00
3FL-56-200	56 VCT @ 0.200A	28V @ 0.400A	12.0	10.00	9.00	8.50	7.50
3FL-88-28	88 VCT @ 0.028A	44V @ 0.056A	2.5	7.25	6.55	6.15	5.45
3FL-88-65	88 VCT @ 0.065A	44V @ 0.130A	6.0	8.00	7.20	6.80	6.00
3FL-88-130	88 VCT @ 0.130A	44V @ 0.260A	12.0	10.00	9.00	8.50	7.50
3FL-120-20	120 VCT @ 0.020A	60V @ 0.040A	2.5	7.25	6.55	6.15	5.45
3FL-120-50	120 VCT @ 0.050A	60V @ 0.100A	6.0	8.00	7.20	6.80	6.00
3FL-120-100	120 VCT @ 0.100A	60V @ 0.200A	12.0	10.00	9.00	8.50	7.50
3FL-230-10	230 VCT @ 0.010A	115V @ 0.020A	2.5	7.25	6.55	6.15	5.45
3FL-230-25	230 VCT @ 0.025A	115V @ 0.050A	6.0	8.00	7.20	6.80	6.00
3FL-230-50	230 VCT @ 0.050A	115V @ 0.100A	12.0	10.00	9.00	8.50	7.50

Note 1: Individual Xfmr coil rating is parallel connection voltage & series connection current.

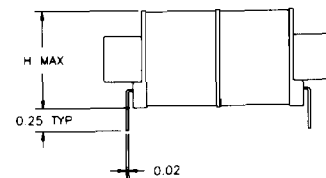
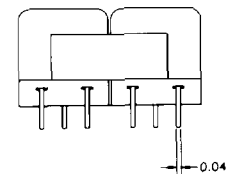
3FL SERIES DIMENSIONS and WEIGHTS ²

VA	A	B	C ³	L	W	H	WT
2.5	1.60 (40.6)	0.375 (9.5)	0.187 (4.8)	1.87 (47.5)	1.56 (39.6)	0.650 (16.5)	5 (142)
6.0	1.60 (40.6)	0.375 (9.5)	0.187 (4.8)	1.87 (47.5)	1.56 (39.6)	0.850 (21.6)	7 (198)
12.0	2.00 (50.8)	0.500 (12.7)	0.250 (6.4)	2.50 (63.5)	2.00 (50.8)	1.065 (27.1)	11 (312)

Note 2: Dimensions in inches (mm). Weight in oz. (gm).

Note 3: 3 output config. has 10 pins, all others 8 pins (omit pin 6 & 9).

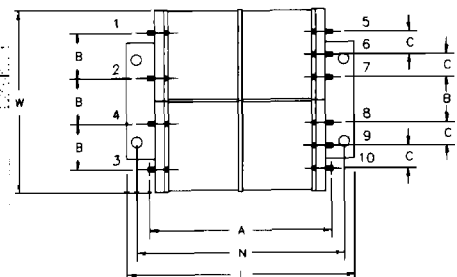
3FL SERIES MECHANICAL SPECIFICATIONS



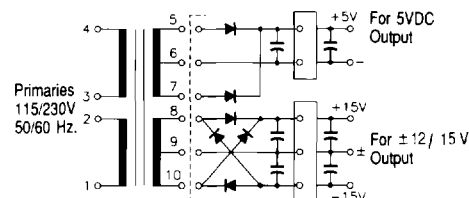
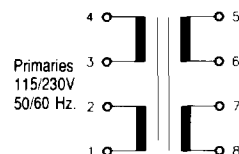
THREE (3) OUTPUT TRANSFORMER MODELS & RATINGS

Regulated Power Supplies for Microprocessors

MODEL No.	SECONDARY 1 AC-rms	SECONDARY 2 AC-rms	DC OUTPUT 1 C.T.F.W.	DC OUTPUT 2 C.T.F.W.	VA	PRICE (qty)			
						1-9	10-24	25-99	100up
3FL-612	17.5V, 155ma	31.5V, 65ma	+5V, 135ma	± 12V, 40ma	6	\$9.75	\$8.80	\$8.30	\$7.30
3FL-615	17.5V, 155ma	37.5V, 60ma	+5V, 135ma	± 15V, 35ma	6	9.75	8.80	8.30	7.30
3FL-1212	17.0V, 340ma	29.0V, 140ma	+5V, 270ma	± 12V, 85ma	12	11.25	10.15	9.55	8.45
3FL-1215	17.0V, 340ma	36.0V, 115ma	+5V, 270ma	± 15V, 70ma	12	11.25	10.15	9.55	8.45



3FL SERIES SCHEMATICS



CONTACT TAMURA for DETAILED DATA SHEETS. FAX: 909/676/9482 or CALL: (909) 699-1270

X-ON Electronics

Largest Supplier of Electrical and Electronic Components

Click to view similar products for [Power Transformers](#) category:

Click to view products by [Tamura](#) manufacturer:

Other Similar products are found below :

[ET-030A](#) [F-102X](#) [F-120X](#) [F-14X-1](#) [F-181U](#) [F-18A](#) [F-199U](#) [F-19X](#) [F-202U](#) [F-204U](#) [F-206U](#) [F-227X](#) [F-238U](#) [F-239U-1](#) [F-23U](#) [F24-250-B](#)
[F-242U](#) [F-245U](#) [F-264U](#) [F-265U](#) [F-267U](#) [F-281U](#) [F-283U](#) [F-290X](#) [F-295Z](#) [F-296Z](#) [F-298Z](#) [F-3143P](#) [F-3298Z](#) [F-33U](#) [F-346X](#) [F-35U](#) [F-](#)
[364U](#) [F-392A](#) [F-395X](#) [F-397U](#) [F-412X](#) [F-47U](#) [F-55X-1](#) [F-60U](#) [F-68U](#) [F-71U](#) [F-72Z](#) [F-74U](#) [F-83A](#) [F-84AC](#) [F-85U](#) [F-86U](#) [F-9U](#) [PCT-02](#)