

Model

Switch Mode Power Supply

AAD600S

600 Watts_{max} output power

Power Factor Correction

Single Output

H.A.L.T. Highly Accelerated Life Testing
TESTED

Electrical Specifications

Input Voltage:	85-264 VAC, 47-63 Hz
Input Current:	<6.5A RMS @ 115 VAC @ full load <3.5A RMS @ 230 VAC @ full load 9.0A RMS @ 85 VAC @ full load
Inrush Current:	<20A, pk @ 110 VAC, active soft start <40A, pk @ 220 VAC, active soft start (Active independent of cold or warm start)
Power Factor:	>0.99 @ full load @ 230VAC input
Harmonic Distortion:	Meets IEC1000-3-2
EMI Filtering:	Meets CISPR 11 and 22 and FCC Part 15 Class B (conducted)
Input Protection:	Internal AC line fuse; 250 VAC, 10A



Output Power:	Up to 600W continuous
Line Regulation:	± 0.1%
Load Regulation:	±0.25%
PARD:	<1% or 250mV 20MHz bandwidth
Hold-up Time:	>16 ms @ full load
Output Polarity:	Output is floating
Minimum Load:	None
Transient Response:	2% for 25% load change @ 1A/μs
Output Rise Time:	<100 ms (10% to 90%)
Remote Sense:	Standard
Current Share:	Within 5%
Remote On/Off:	Ground or TTL _{LOW} = OFF Open or TTL _{HIGH} = ON

AC Power Fail:	TTL _{LOW} logic "0" at least 2 ms before DC output drops 5% (without signal jitter). Open collector.
DC OK:	Open collector when output voltage is above 95% of rated
Overcurrent/Short Circuit:	Square current limit; 105-130% of rated
Overvoltage Protection:	Factory set, 125% ±5% cycle AC to reset
Reverse Voltage:	Reverse current up to rated outputs
Thermal Protection:	Auto off; auto reset upon cool down
Efficiency:	Up to 92%
MTBF:	MIL-STD-HDBK 217E 200,000 hours @ 25°C, ground benign, Highly Accelerated Life Testing

Available Voltage Outputs*

Voltage Codes	Voltages (Volts)	Continuous Current (Amps)
-4	12	42
-5	15	36
-6	24	23
-7	28	20
-8	36	16
-9	48	12.5

* Consult factory for other voltages and OEM quantities.

Note: Standard models are shown **bold**

PART # STRUCTURE:

MODEL - **VOLTAGE CODE** - **OPTION CODES** (See back)
- **V1** -
AAD600S - **X** - **ABC...**

Example: Part Number **AAD600S-8-CF** = 600W Power Factor Corrected, 36V @ 16A with sealed pots and overcurrent foldback mode.

SEE 3rd PAGE FOR THE AAD600S CODE TABLE AND AVAILABLE OPTIONS.

Model

AAD600S



Options (code)

- | | |
|----------------------------------|---------------------------------|
| DC OK Invert (U) | PF Invert (B) |
| Metric Mounting (M) | Remote On/Off Invert (S) |
| OR-ing Diodes (O) | Overcurrent Hiccup Mode (D) |
| Droop Current Share (A) | Overcurrent Latch-off Mode (E) |
| Gold Plated Signal Connector (G) | Overcurrent Foldback Mode (F) |
| Sealed Pots (C) | Standby Power (5VDC @ 1A) (P)** |

**Voltage available as long as AC input is present

GUZmi7 ca d'jUbWV

IEC / EN / UL / CSA 60950-1

CE Declaration to Low Voltage Directive 2006/95/EC and

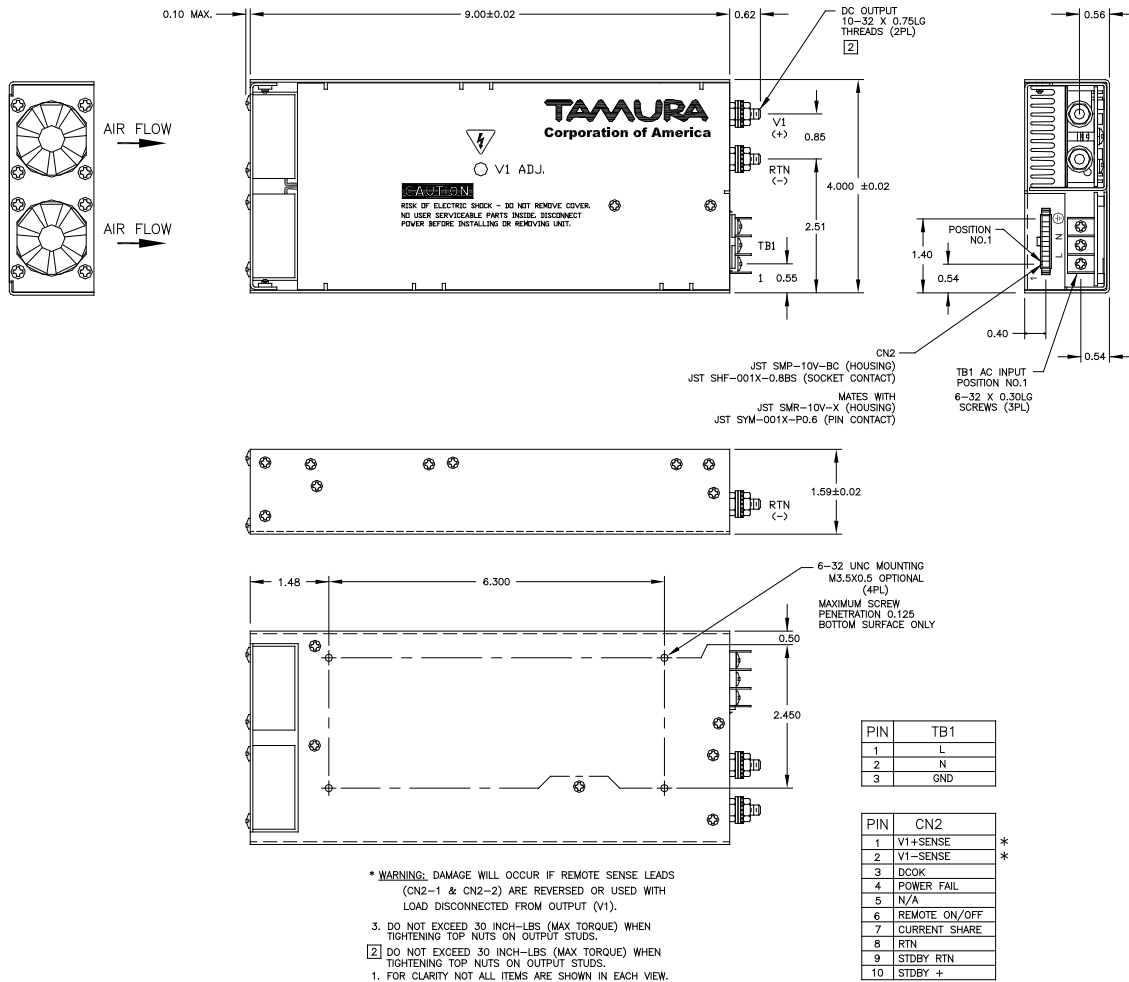
RoHS Directive 2011/65/EU

Surge & ESD Test Levels

- | | |
|---------------------|--------------------------------|
| EN61000-4-5 Level 3 | EN61000-4-2 Level 2 |
| EN61000-3-2 | EN61000-4-2 Level 3 (Air Only) |
| EN61000-4-4 Level 3 | EN61000-4-11 |
- Meets Class B conducted limits per CISPR 11/22 and CFR 15 subpt B

Physical Specifications

- | | |
|---------------------|--|
| Dimensions: (HxWxL) | 1.59" x 4" x 9" |
| Operating Temp: | 0 to 70°C; rated power to 50°C derate linearly to 50% at 70°C. |
| Relative Humidity: | 5% to 90%, non-condensing |
| Storage: | -50 to 85°C/20-90% RH |
| Altitude: | 6,561' operating;
40,000' storage |



© Copyright 2011 TAMURA CORPORATION OF AMERICA. Specifications subject to change without notice.



TAMURA CORPORATION OF AMERICA
1040 South Andreasen Drive, STE. 100 Escondido, CA 92029-1951
(951) 699-1270 / Fax: (951) 676-9482
(800) 472-6624 www.tamuracorp.com



AAD600S Series Part Number Code Table

Standard Models

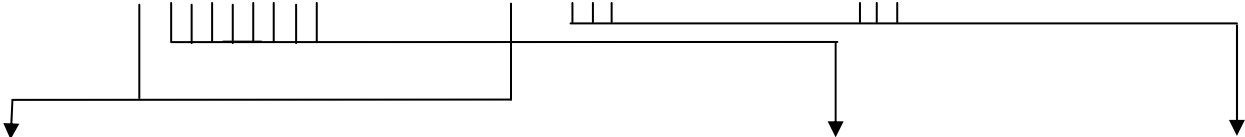
Tailored Models

Custom Models

AAD600S-X-YYYYYY

AAD600S-X-60ZZZ

AAD600S-61ZZZ



P/N Codes	Output Voltage and Current Codes		Standard Options	
DC Output Voltage Code	"X" Channel (V1)		"Y" Code Description	
	Volts	Amps		
4	12.0	42.0	<ul style="list-style-type: none"> A Droop Current Share B PF Invert C Sealed pot D OCP Hicc-up Mode E OCP latch off mode F OCP fold back mode G Gold plated signal connector M Metric Mounting O OR-ing Diode P 5Vdc, 1A Standby Output S Remote On/Off Invert (Open is off) U DCOK Invert 	
5	15.0	36.0		
6	24.0	23.0		
7	28.0	20.0		
8	36.0	16.0		
9	48.0	12.5		
				<p>Tailored Units (no safety changes: omit "X" code)</p> <p style="text-align: center;">for non-standard output)</p> <p>-----</p> <p>"60ZZZ" : "Z" – Factory Assigned P/N</p> <p>Harnesses Added, Special test data ... ETC....</p>
				<p>Custom Units (safety critical changes)</p> <p>-----</p> <p>"61ZZZ" : "Z" – Factory Assigned P/N</p> <p>ETC.....</p>

X-ON Electronics

Largest Supplier of Electrical and Electronic Components

Click to view similar products for [Switching Power Supplies](#) category:

Click to view products by [Tamura](#) manufacturer:

Other Similar products are found below :

[70841011](#) [73-551-0005](#) [AAD600S-4-OP](#) [R22095](#) [HWS50A-5/RA](#) [KD0204](#) [9021](#) [S-15F-12](#) [LDIN100150](#) [LPM000-BBAR-01](#) [LPX17S-C](#)
[EVS57-10R6/R](#) [FDC40-24S12](#) [FRV7000G](#) [22929](#) [CQM1IA121](#) [40370121900](#) [VI-PU22-EXX](#) [40370121910](#) [LDIN5075](#) [432703037161](#)
[WRB01X-U](#) [LPX140-C](#) [09-160CFG](#) [70841004](#) [70841025](#) [VPX3000-CBL-DC](#) [LPM000-BBAR-05](#) [LPM000-BBAR-08](#) [LPM124-OUTA1-48](#)
[LPM000-BBAR-07](#) [LPM109-OUTA1-10](#) [LPM616-CHAS](#) [08-30466-1055G](#) [08-30466-2175G](#) [08-30466-2125G](#) [DMB-EWG](#) [TVQF-1219-](#)
[18S](#) [6504-226-2101](#) [CQM1IPS01](#) [MAP80-4000G](#) [LFP300F-24-TY](#) [SMP21-L20-DC24V-5A](#) [VI-MUL-ES](#) [08-30466-0065G](#) [CME240P-24](#)
[VI-RU031-EWWX](#) [08-30466-0028G](#) [S82Y-TS01](#) [LFP300F-24-SNTY](#)