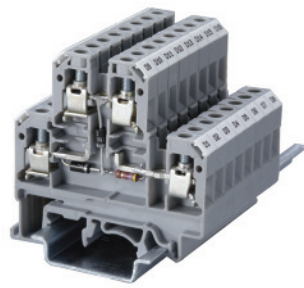


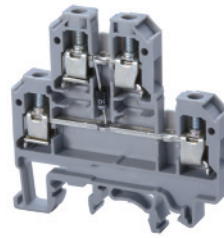
Indicator/ Diode Circuit

Altech offers different types of terminals incorporating electronic components for signal converting, circuit protection and status indication. Based on customer requirements, specially assembled terminals are offered.



Terminal Width	
Height x Length	
Terminal Voltage	
Stripping Length	
Insulation Material	
Approvals	
Wire Range	
Voltage Rating	
Current Rating	
Torque	
Other Approvals	

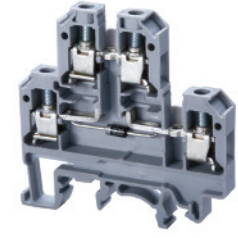
CDL4U(E)D1/D2



With arc suppression circuit for contactors and solenoid valves - DC

Terminal Width	6 mm
Height x Length	54 x 55.5 mm
Terminal Voltage	300 V~
Stripping Length	9 mm
Insulation Material	Polyamide 6.6
Approvals	
Wire Range	22-10 AWG 0.2-4 sq.mm 22-10 AWG
Voltage Rating	300 V 500 V 600 V
Current Rating	25 A 32 A 35 A
Torque	7 lb-in 0.5 Nm 7 lb-in
Other Approvals	

CDL4U(E)D3



Diode circuit for reverse polarity protection

Terminal Width	6 mm
Height x Length	54 x 55.5 mm
Terminal Voltage	300 V~
Stripping Length	9 mm
Insulation Material	Polyamide 6.6
Approvals	
Wire Range	22-10 AWG 0.2-4 sq.mm 22-10 AWG
Voltage Rating	300 V 500 V 600 V
Current Rating	25 A 32 A 35 A
Torque	7 lb-in 0.5 Nm 7 lb-in
Other Approvals	

Terminal Block

End Plate	
-----------	--

DIN Rail for ordering information refer to pages 90-91

End Stop for ordering information refer to page 92	
--	--

Internal Jumper		2 pole	CA727/2	100
		3 pole	CA727/3	100
		4 pole	CA727/4	100
		10 pole	CA727/10	10

Current Bars		2 pole	CA703/1	100
		3 pole	CA704/2	100
		4 pole	CA705/3	100
		10 pole	CA732/10	100
		10 pole (breakable)	CA732/10-A	100
		100 pole	CA732/100	10

Shorting Sleeve & Screw		CA607/S/Q	100
-------------------------	--	-----------	-----

Marking Tags		MT2	100
--------------	--	-----	-----

Cat. No.	Std. Pk.
----------	----------

CDL4U(E)D1	100
CDL4U(E)D2	100

Cat. No.	Std. Pk.
----------	----------

CDL4U(E)D3	100
------------	-----

EPCDL4U	50
---------	----

EPCDL4U	50
---------	----



CA702	50
CA802	50

CA702	50
CA802	50

CA727/2	100
CA727/3	100
CA727/4	100
CA727/10	10

CA727/2	100
CA727/3	100
CA727/4	100
CA727/10	10

CA703/1	100
CA704/2	100
CA705/3	100
CA732/10	100
CA732/10-A	100
CA732/100	10

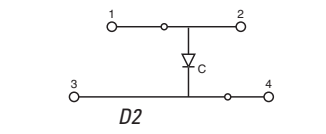
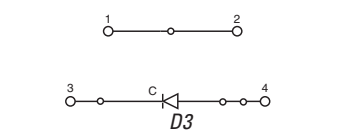
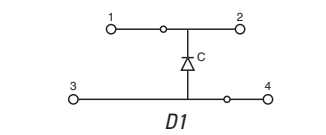
CA703/1	100
CA704/2	100
CA705/3	100
CA732/10	100
CA732/10-A	100
CA732/100	10

CA607/S/Q	100
-----------	-----

CA607/S/Q	100
-----------	-----

MT2	100
-----	-----

MT2	100
-----	-----



Diode Specifications	
Diode	1N 4007
Diode Reverse Voltage	1000 V
Diode Current	1 A

COLOR BLOCKS
(other than standard grey)

When ordering please add color suffix to Cat. No.
Example for color Red: **Cat.No./R**

Color	Ordering Suffix	
Red	R	
Yellow	Y	
Blue	BU	
Green	G	
Orange	O	
Beige	BG	
Dark Brown	DB	
Black	BL	
White	W	

Consult Altech for availability.

X-ON Electronics

Largest Supplier of Electrical and Electronic Components

Click to view similar products for [DIN Rail Terminal Blocks](#) category:

Click to view products by [Altech](#) manufacturer:

Other Similar products are found below :

[1045932](#) [00110420202](#) [00110430402](#) [5724.2/L](#) [592808-3](#) [CTS25U/BL](#) [CTS2.5U-N/Y](#) [91.010](#) [91.040](#) [DP25-GY-ND](#) [15288](#) [90.070](#) [90.905](#)
[91.001](#) [91.020](#) [91.201](#) [91.340](#) [2713793](#) [2757571](#) [280-331](#) [283-317](#) [283-607](#) [2909044](#) [2909798](#) [29-2052](#) [SRT2-OD08CL-1](#)
[CDL4U\(E\)MOV](#) [2757801](#) [2794660](#) [284-317](#) [2890975](#) [2907033](#) [3048496](#) [CTS2.5U-N/O](#) [5542152](#) [5602077](#) [0709880](#) [5520682](#) [5605444](#)
[5607102](#) [EPUSC](#) [SRT2-OD16P](#) [2901288](#) [591620-2](#) [1-591651-1](#) [NRA37-1/2](#) [592814-1](#) [592814-3](#) [SRT2-ID16P](#) [NRA37-12](#)