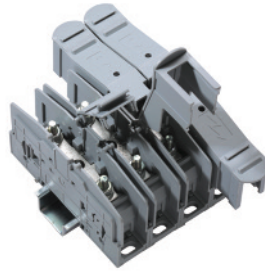


PTB series Terminal Blocks are preferred for applications using wires of large cross section. The Wire is crimped to a ring / fork lug and is screwed on to the flat current bar of the Terminal Block. Specially designed Mounting Feet hold the Terminal Block rigidly on to the Mounting Rail.

Two Lugs of 35 sq.mm can be connected to the Terminal Block, without sacrificing the safety of the Terminal Block. Hinged Protective Cover makes the Terminal Block shock proof (finger safe) and has marker recess to accept marking tags.

The Terminal Blocks can be stacked together by pressing the adjacent Terminal Blocks firmly. In PTB35SH series Terminal Blocks, adjacent terminals can be shorted by removing a thin wall partition and using 2/3/4 way shorting link.

* Optional Marker Holder can be used for installing marking tags on the Terminal Blocks without protective covers.



Terminal Width

Height x Length

Stripping Length

Insulation Material

Type of Connection

Approvals

Wire Range

Voltage Rating


Current Rating

Torque

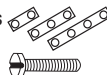
Other Approvals


Terminal Block

DIN Rail for ordering information refer to pages 90-91

End Stop for ordering information refer to page 92 

Bolt Size

Current Bars  2 pole
3 pole
4 pole

Marking Tags 

Marking Tag Holder

PTB35/50 / PTB35/50SH




25 mm

73.6 x 169 mm

18 mm / M6

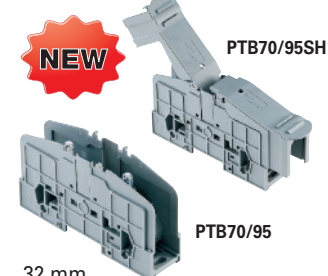
Polyamide 6.6

2 bolts for connection

 C US	 60947-7-1	 C US E220514
8-2 AWG	1.5-50 mm ²	8-2 AWG
600 V	1000 V	600 V
115 A	150 A	115 A
27 lb-in	3.0 Nm	27 lb-in



PTB70/95 / PTB70/95SH



32 mm

78 x 192 mm

18 mm / M6

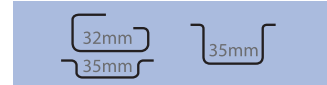
Polyamide 6.6

2 bolts for connection

 C US	 60947-7-1	 C US E220514
8-4/0 AWG	1.5-95 mm ²	8-4/0 AWG
600 V	1000 V	600 V
230 A	232 A	230 A
87 lb-in	10.0 Nm	87 lb-in



Cat. No.	Std. Pk.
PTB35/50	10
PTB35/50SH	10



CA102	50
CA202	50

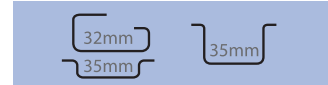
M6	–
----	---

CA703/9	10
CA704/9	10
CA705/9	10

MT9	100
-----	-----

MHPTB35*	
----------	--

Cat. No.	Std. Pk.
PTB70/95	10
PTB70/95SH	10



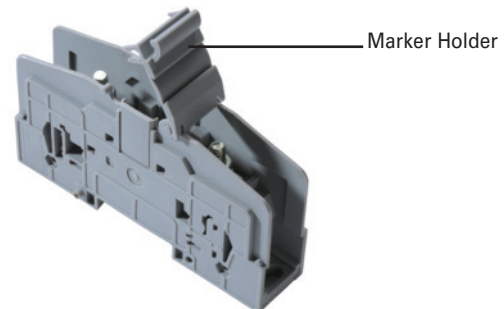
CA102	50
CA202	50

M8	–
----	---

CA703/11	10
CA704/11	10
CA705/11	10

MT9	100
-----	-----

MHPTB70*	
----------	--



X-ON Electronics

Largest Supplier of Electrical and Electronic Components

Click to view similar products for [DIN Rail Terminal Blocks](#) category:

Click to view products by [Altech](#) manufacturer:

Other Similar products are found below :

[1045932](#) [00110420202](#) [00110430402](#) [5724.2/L](#) [592808-3](#) [CTS25U/BL](#) [CTS2.5U-N/Y](#) [90.080](#) [91.010](#) [91.040](#) [DP25-GY-ND](#) [15288](#) [90.070](#)
[90.202](#) [90.905](#) [91.001](#) [91.020](#) [91.201](#) [91.340](#) [2713793](#) [280-331](#) [283-317](#) [283-607](#) [2909044](#) [2909798](#) [29-2052](#) [SRT2-OD08CL-1](#)
[CDL4U\(E\)MOV](#) [2757801](#) [2794660](#) [284-317](#) [2890975](#) [2907033](#) [3048496](#) [CTS2.5U-N/O](#) [5542152](#) [5602077](#) [0709880](#) [5520682](#) [5607102](#)
[EPUSC](#) [SRT2-OD16P](#) [2901288](#) [591620-2](#) [1-591651-1](#) [NRA37-1/2](#) [592814-1](#) [592814-3](#) [SRT2-ID16P](#) [NRA37-12](#)