

# P Core Halves Einzelschalen

## Einzelschalen für induktive Näherungsschalter

Mit induktiven Näherungsschaltern lassen sich Bewegungsabläufe und Schaltzustände berührungslos erfassen.

Hinsichtlich der Abmessungen sind Einzelschalen an die genormten Schalter angepasst. Damit können für die Schalenkerngrößen jeweils maximale Schaltabstände erreicht werden. Kerne mit der Bezeichnung „PS“ sind nach DIN 41001 genormt.

### Werkstoffauswahl:

- bis 1 MHz N 22
- bis 2 MHz M 33



## P core halves for inductive proximity switches

Inductive proximity switches can be used as noncontacting motion detectors and output indicators. Pot core halves are matched to

standard switches in their dimensions. Maximum operating distances can thus be achieved for individual P core sizes. Cores with the “PS” designation have been

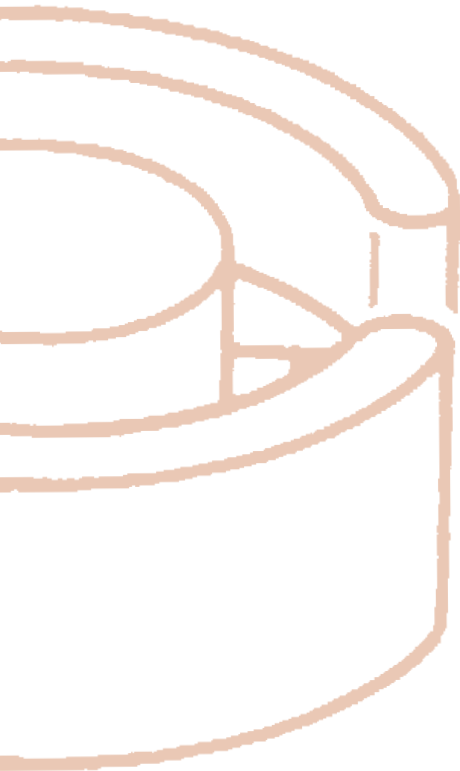
standardized to DIN 41001.

### Material choice:

- up to 1 MHz N 22
- up to 2 MHz M 33



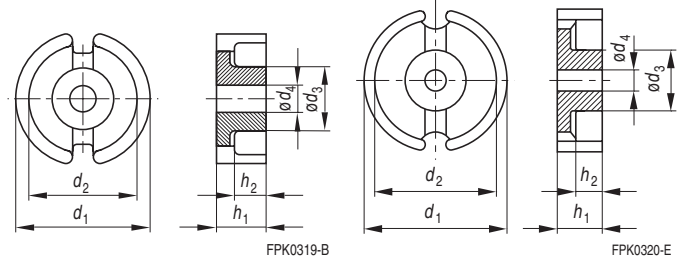
Kerne / Cores				Zubehör / Accessories	
Typ Type	Material			Bestellnummer Ordering code	Spulenkörper Coil formers
	N22	M33	N27		
5.6 x 3.7	X			B65931C0000X022 B65931C0000X033	
PS 7.35 x 3.6	X			B65933A0000X022 B65933A0000X033	B65512C0000T001
PS 9 x 3.5	X			B65935E0000X022 B65935E0000X033	B65936A0000T001
14.4 x 7.5	X			B65937A0000X022	B65542B0000T001
PS 25 x 8.9	X			B65939A0000X022	B65940B0000T001
PS 30.5 x 10.2	X			B65941A0000X022	B65942B0000T001
PS 35 x 10.8	X			B65947A0000X022	
PS 47 x 14.9	X			B65943A0000X022	
PS 68 x 14.5	X			B65928A0000X022	B65946B0000T001
70 x 14.5	X			B65945A0000X022	B65946B0000T001
150 x 30			X	B65949A0000X027	



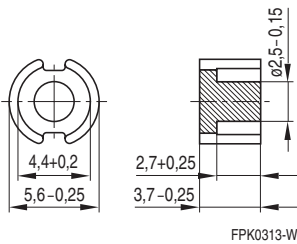
Typ Type	Hauptmaße (mm) Main dimensions (mm)					
	d <sub>1</sub>	d <sub>2</sub>	∅ d <sub>3</sub>	∅ d <sub>4</sub>	h <sub>1</sub>	h <sub>2</sub>
PS 25.9 x 8.9	24.8 -1.0	20.5 +1.0	11.3 -0.6	5.2 +0.4	8.9 -0.45	5.9 +0.4
PS 30.5 x 10.2	30.5 -1.0	25.0 +0.8	13.5 -0.4	5.4 +0.2	10.2 -0.5	7.0 +0.4
PS 35 x 10.8	35.0 -1.0	29.2 +1.2	15.7 -0.6	5.3 +0.3	10.8 -0.5	7.2 +0.4
PS 47 x 14.9	47.0 -1.3	39.0 +1.1	20.0 -0.6	5.5 +0.2	14.9 -0.7	10.0 +0.5

PS 25 x 8.9 / PS 30.5 x 10.2

PS 35 x 10.8 / PS 47 x 14.9

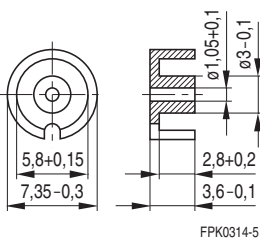


5.6 x 3.7



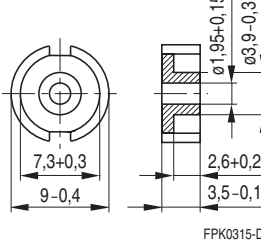
FPK0313-W

PS 7.35 x 3.6



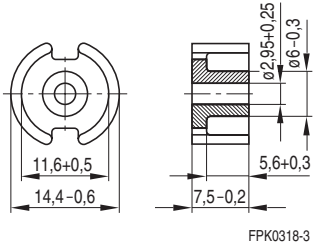
FPK0314-5

PS 9 x 3.5



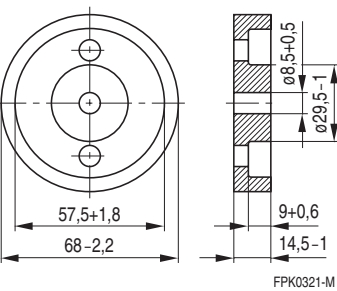
FPK0315-D

14.4 x 7.5



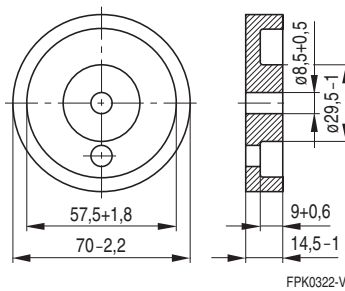
FPK0318-3

PS 68 x 14.5



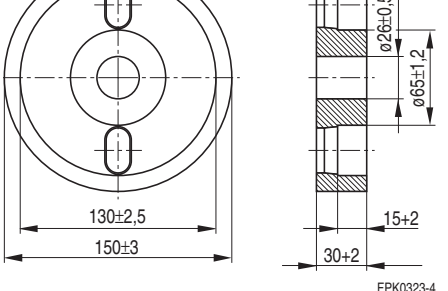
FPK0321-M

70 x 14.5



FPK0322-V

150 x 30



FPK0323-4

## X-ON Electronics

Largest Supplier of Electrical and Electronic Components

*Click to view similar products for [Ferrite Cores & Accessories](#) category:*

*Click to view products by [TDK](#) manufacturer:*

Other Similar products are found below :

[B65512C0000T001](#) [B65522B0000T001](#) [B65549E4X23](#) [B65659F0003X023](#) [B65659F4X23](#) [B65665C0004X000](#) [B65679E3X22](#)

[B65705B0003X000](#) [B65804C2005X000](#) [B65812B3003X22](#) [B65814B2005X000](#) [B65840B1006D001](#) [B65840B1006D002](#)

[B65878E0012D001](#) [B66206A2001X000](#) [B66206J1106T1](#) [B66252BM1](#) [B66288F2204X000](#) [B66306C1010T2](#) [B66341G0000X127](#)

[B66390A1016T001](#) [B62152P0007X030](#) [B65518D2001X000](#) [B65535B0003X000](#) [B65539C1003X1](#) [B65542A5000X](#) [B65655B0009X000](#)

[B65687A1000T001](#) [B65714K1020T001](#) [B65734B1000T001](#) [B65734B1000T1](#) [B65814N1008D002](#) [B65816N1011D1](#) [B65844W1010D001](#)

[B65848D1010D1](#) [B65848S2000X](#) [B65884E0012D001](#) [B66202A2010X000](#) [B66202B1106T001](#) [B66206B1110T001](#) [B66208K1009T001](#)

[B66208X1010T001](#) [B66291P0000X187](#) [B66387G1200X187](#) [B66461P0000X187](#) [B67410A72X27](#) [UECESDFPL20150](#) [UECESDR14C2000](#)

[UECESDR14E0000](#) [UECESDR1600000](#)