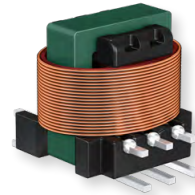




Sample Kit

SMT Isolated Transformers

E5 Series – B78302*A003



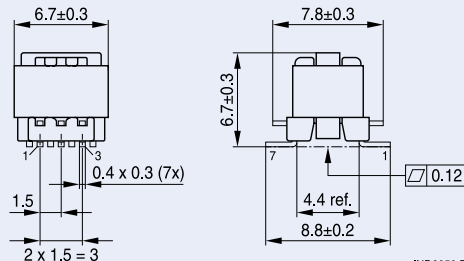
www.tdk-electronics.tdk.com

Resonant Transformers – E5 Core (SMT)

Turns ratio	N1 : N2 : Np	1 : 1 : 10.8	1 : 1 : 11	1 : 1 : 15.3
L (4 - 6)	mH	2	3	4
$R_{DC, N1a/N1b/N2}$	Ω	1.1 / 1.1 / 21	1.4 / 1.4 / 26	1.1 / 1.1 / 32
Ordering code	B78302*	A2401A003	A2402A003	A2403A003

Technical data

- All values measured at +25 °C ambient temperature
- Frequency range: 50 ... 300 kHz (typ.)
- Operating temperature range: -40 °C ... +125 °C
- High voltage test N1a, N1b/N2: 200 V_{RMS} (50 Hz, 1 s)
- Connect Pins 6 and 7 on PCB for the use of the EMC/immission compensation winding
- MSL Level 1
- RoHS compatible
- AEC-Q200 available
- Blister Tape and reel packing:
30.4 mm blister tape, 380 mm reel
- Packing units: 1000 pcs/reel



P302381
B78302A2401A003

P302304
B78302A2402A003

P302382
B78302A2403A003



Important information: It is incumbent on the customer to check and decide whether a product is suitable for use in a particular application. Our products are described in detail in our data sheets. Our *Important notes* and the product-specific *Cautions and warnings* must be observed. All relevant information is available through our sales offices.

X-ON Electronics

Largest Supplier of Electrical and Electronic Components

Click to view similar products for [Inductor Kits & Accessories](#) category:

Click to view products by [TDK](#) manufacturer:

Other Similar products are found below :

[B82498X001](#) [EKDMGN08A-KIT](#) [CP-P36/22-2S](#) [744062](#) [TSTH-MM](#) [TSTH-MS](#) [TTH 50-150](#) [WE-1413H](#) [WE-1952V](#) [WE-237](#) [WE-2750H](#)
[WE-279](#) [WE-3671H](#) [WE-3683H](#) [WE-3686](#) [WE-3693](#) [WE-3698H](#) [WE-3701H](#) [WE-3759](#) [E30-K-H-12P-SS-P3002](#) [E65-54-K-H](#) [E65-81-K-H](#)
[EE13-K-V-10P-SW](#) [EE25_10_6-K-V-10P-YW-360](#) [EF12.6-K-H-9P-P1212](#) [EF16-K-H-9P-SW](#) [EF20-K-H-8P](#) [EF20-K-H-8P-SW](#) [EFD12_3.5-](#)
[K-1S-8P-CPHS](#) [FIRCHK](#) [744006](#) [7440405](#) [CLI-EFD25](#) [CPH-U15/11/6-1S-4P](#) [TSTH-MD](#) [WE-3657H](#) [WE-3621H](#) [WE-3292V](#) [WE-2752V](#)
[CCCM453232-LAB1](#) [B66359-B1013-T1](#) [B82442X002](#) [TTH 200-300](#) [74491](#) [P0752NLKIT](#) [P0250NLKIT](#) [P0770NLKIT](#) [823999](#) [WZ-7958](#)
[WZ 7953/1 ST](#)