

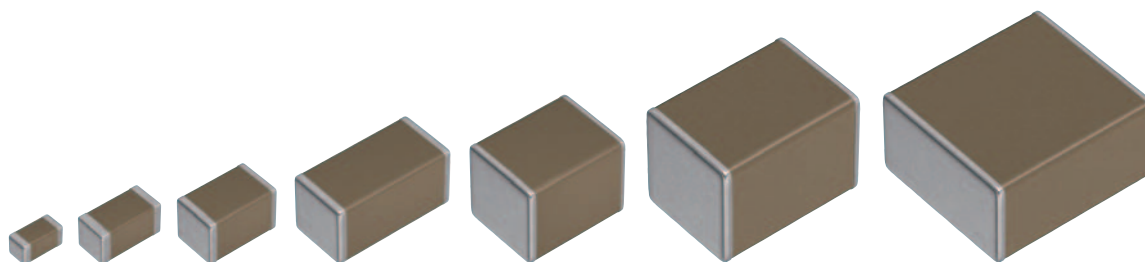
积层贴片陶瓷片式电容器

一般等级，中耐压（100 to 630V）

C系列

| | |
|-------|-------------|
| C1005 | [0402 inch] |
| C1608 | [0603 inch] |
| C2012 | [0805 inch] |
| C3216 | [1206 inch] |
| C3225 | [1210 inch] |
| C4532 | [1812 inch] |
| C5750 | [2220 inch] |

* 表示尺寸代码。JIS[EIA]



使用注意事项

在使用本产品前，请务必随附采购规格书。

安全注意事项

使用本产品时，请注意安全事项。

注意

1. 本产品目录中记载的产品是指在通用标准用途意义上使用于一般电子设备（AV 设备，通信设备，家电产品，娱乐设备，计算机设备，个人设备，办公设备，计测设备，工业机器人），并且该一般电子设备要在通常的操作和使用方法下使用。

对于需要高度安全性和可靠性的，或者设备的故障，误动作，运转不良可能会给人的生命，身体及财产等造成损害，以及有可能产生莫大社会影响的以下用途（以下称‘特定用途’）中的适用性，性能发挥，品质，本公司不予保证。

客户预定在本产品目录的范围，条件之外，或者在特定用途中使用，请事先咨询本公司相关部门。本公司会配合客户需求，一起协商不同于本产品目录中所记载的使用用途。

(1) 航空，航天设备

(2) 运输设备（汽车，电车，船舶等）

(3) 医疗设备（除《药事法》分类中的 I、II 级以外）

(4) 发电控制设备

(5) 核动力相关设备

(6) 海底设备

(7) 交通工具控制设备

(8) 公共性的高度信息处理设备

(9) 军用设备

(10) 电热用品，燃烧设备

(11) 防灾防盗设备

(12) 各种安全装置

(13) 其他被认定为特定用途的用途

此外，对使用本产品目录中所记载产品的设备进行设计时，请确保符合该设备的使用用途及状态的保护回路和装置，并设置备用回路等。

2. 本产品目录中记载的产品因改良及其他原因可能在不经预告的情况下进行变更或停止供应。

3. 关于本产品目录中记载的产品，本公司备有记载了各产品的规格及安全注意事项的“交货规格书”。在选用产品时，建议签定交货规格书。

4. 在出口本产品目录中记载的产品时，有时会被归为“外汇及外贸管理法”中规定的管制货物等。在这种情况下，需要有依据该法规定的出口许可。

5. 关于本产品目录的内容，未经本公司许可不得擅自转载或复制。

6. 因使用本产品目录中记载的产品而发生涉及本公司或第三者的知识产权及其他权利的问题时，本公司对此将不承担责任。并且，本公司不对该等权利的实施权办理许可。

7. 本产品目录适用于从本公司或本公司的正规代理商购买的产品。从其他第三者购买的产品不在适用范围之内。

注意：伴随网站的更新，由于系统限制的原因以及统一产品目录型号的需要，从2013年1月开始，TDK将在产品目录中使用新型号。新目录型号将在以后所有根据产品目录订货时使用，但不适用于OEM订购。目录型号的最后5位数与产品标签上的交货型号（内部控制编号）不同，请注意。详细信息请联系当地TDK销售代表。

（例）

| 产品目录发行日期 | 目录型号 | 交货型号（交货标签上的标识） |
|------------|-----------------------|---------------------|
| 2012年12月以前 | C1608C0G1E103J(080AA) | C1608C0G1E103JT000N |
| 2013年1月及以后 | C1608C0G1E103J080AA | C1608C0G1E103JT000N |

C 系列

中耐压 (100 to 630V)



Type: C1005 [0402 inch]、C1608 [0603 inch]、C2012 [0805 inch]、
C3216 [1206 inch]、C3225 [1210 inch]、C4532 [1812 inch]、
C5750 [2220 inch]

■ 系列概要

TDK叠层陶瓷贴片电容的一般等级C系列中的中耐压产品，额定电压为100~630V，可应对电路中的高压场景。其最大容量可达到22 μ F。

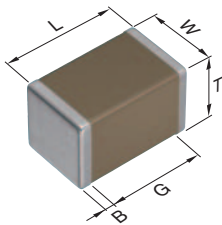
■ 特点

- 5种额定电压 100V、250V、350V、450V、630V
- 温度特性和偏压特性稳定的COG、CH品也可以对应。

■ 应用

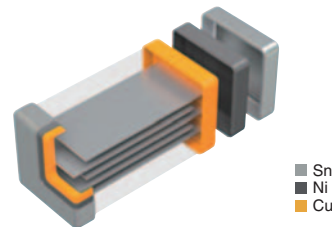
- 高电压电路中的去耦、平滑、缓冲、谐振回路等
- 无线充电单元、DC-DC Converter、Inverter等

■ 形状与尺寸



| | |
|---|------|
| L | 主体长度 |
| W | 主体宽度 |
| T | 主体高度 |
| B | 端子宽度 |
| G | 端子间距 |

■ 产品构造图



诱导体和内部电极交互叠层构造。利用单片回路的简单设计，拥有更优越的机械强度和更好的频率特性。

Dimensions in mm

| Type | L | W | T | B | G |
|--------------|-----------------|-----------------|-----------------|-----------|-----------|
| C1005 | 1.00 \pm 0.05 | 0.50 \pm 0.05 | 0.50 \pm 0.05 | 0.10 min. | 0.30 min. |
| C1608 | 1.60 \pm 0.10 | 0.80 \pm 0.10 | 0.80 \pm 0.10 | 0.20 min. | 0.30 min. |
| C2012 | 2.00 \pm 0.20 | 1.25 \pm 0.20 | 1.25 \pm 0.20 | 0.20 min. | 0.50 min. |
| C3216 | 3.20 \pm 0.20 | 1.60 \pm 0.20 | 1.60 \pm 0.20 | 0.20 min. | 1.00 min. |
| C3225 | 3.20 \pm 0.40 | 2.50 \pm 0.30 | 2.50 \pm 0.30 | 0.20 min. | — |
| C4532 | 4.50 \pm 0.40 | 3.20 \pm 0.40 | 3.20 \pm 0.30 | 0.20 min. | — |
| C5750 | 5.70 \pm 0.40 | 5.00 \pm 0.40 | 2.80 \pm 0.30 | 0.20 min. | — |

* 尺寸公差是代表价值。

■ 目录型号的识别法

| | | | | | | | | |
|----------|-------------|------------|-----------|------------|----------|------------|----------|----------|
| C | 5750 | X7S | 2A | 226 | M | 280 | K | B |
| (1) | (2) | (3) | (4) | (5) | (6) | (7) | (8) | (9) |

(1) 系列名称

(2) 尺寸 L x W (mm)

| 代码 | EIA | 长度 | 宽度 | 端子宽度 |
|------|--------|------|------|------|
| 1005 | CC0402 | 1.00 | 0.50 | 0.10 |
| 1608 | CC0603 | 1.60 | 0.80 | 0.20 |
| 2012 | CC0805 | 2.00 | 1.25 | 0.20 |
| 3216 | CC1206 | 3.20 | 1.60 | 0.20 |
| 3225 | CC1210 | 3.20 | 2.50 | 0.20 |
| 4532 | CC1812 | 4.50 | 3.20 | 0.20 |
| 5750 | CC2220 | 5.70 | 5.00 | 0.20 |

(3) 温度特性

| 温度特性 | 温度系数或电容变化率 | 温度范围 |
|------|-------------|---------------|
| CH | 0±60 ppm/°C | -25 to +85°C |
| C0G | 0±30 ppm/°C | -55 to +125°C |
| JB | ±10% | -25 to +85°C |
| X5R | ±15% | -55 to +85°C |
| X6S | ±22% | -55 to +105°C |
| X7R | ±15% | -55 to +125°C |
| X7S | ±22% | -55 to +125°C |
| X7T | +22,-33% | -55 to +125°C |

(4) 额定电压 (DC)

| 代码 | 电压 (DC) |
|----|---------|
| 2A | 100V |
| 2E | 250V |
| 2V | 350V |
| 2W | 450V |
| 2J | 630V |

(5) 标称电容 (pF)

电容量以 pF (微微法拉) 为单位, 并用三个文字表示。最初两个文字表示电容的第一位和第二位有效数字。第三个文字表示接在有效数字后的零的个数。含有小数点时用 R 表示。

(例) 0R5 = 0.5pF
 101 = 100pF
 225 = 2,200,000pF = 2.2μF

(6) 电容容差

| 代码 | 容差 |
|----|---------|
| C | ±0.25pF |
| D | ±0.50pF |
| F | ±1% |
| G | ±2% |
| J | ±5% |
| K | ±10% |
| M | ±20% |

(7) 厚度

| 代码 | 产品厚度 |
|-----|---------|
| 050 | 0.50 mm |
| 060 | 0.60 mm |
| 080 | 0.80 mm |
| 085 | 0.85 mm |
| 115 | 1.15 mm |
| 125 | 1.25 mm |
| 130 | 1.30 mm |
| 160 | 1.60 mm |
| 200 | 2.00 mm |
| 230 | 2.30 mm |
| 250 | 2.50 mm |
| 280 | 2.80 mm |
| 320 | 3.20 mm |

(8) 包装形式

| 代码 | 形式 |
|----|-----------------|
| A | 178mm 卷筒、4mm 间距 |
| B | 178mm 卷筒、2mm 间距 |
| K | 178mm 卷筒、8mm 间距 |

(9) 特殊指定代码

| 代码 | 内容 |
|---------|-----------|
| A、B、C、N | 本公司内部管理符号 |

电容范围图

C1005 [0402 inch]

| 电容 | | C0G | CH | X7S |
|--------|-----|--------------|--------------|--------------|
| (pF) | 代码 | 2A (100V) | 2A (100V) | 2A (100V) |
| 100 | 101 | ■ | ■ | |
| 120 | 121 | ■ | ■ | |
| 150 | 151 | ■ | ■ | |
| 180 | 181 | ■ | ■ | |
| 220 | 221 | ■ | ■ | |
| 270 | 271 | ■ | ■ | |
| 330 | 331 | ■ | ■ | |
| 390 | 391 | ■ | ■ | |
| 470 | 471 | ■ | ■ | |
| 560 | 561 | ■ | ■ | |
| 680 | 681 | ■ | ■ | |
| 820 | 821 | ■ | ■ | |
| 1,000 | 102 | | | ■ |
| 1,500 | 152 | | | ■ |
| 2,200 | 222 | | | ■ |
| 3,300 | 332 | | | ■ |
| 4,700 | 472 | | | ■ |
| 6,800 | 682 | | | ■ |
| 10,000 | 103 | | | ■ |

标准厚度 ■ 0.50 mm

■ 灰色涂层的品名为不推荐用于新设计中的产品。


■ 关于产品厚度，静电容量公差等详细信息，请参照 P-13 以后的静电容量范围表。

电容范围图

C1608 [0603 inch]

| 电容 | | C0G | | CH | | JB | X5R | X7R | X7S |
|---------|-----|--------------|--------------|--------------|--------------|--------------|--------------|--------------|--------------|
| (pF) | 代码 | 2E (250V) | 2A (100V) | 2E (250V) | 2A (100V) | 2A (100V) | 2A (100V) | 2A (100V) | 2A (100V) |
| 1 | 010 | | | | | | | | |
| 1.5 | 1R5 | | | | | | | | |
| 2 | 020 | | | | | | | | |
| 2.2 | 2R2 | | | | | | | | |
| 3 | 030 | | | | | | | | |
| 3.3 | 3R3 | | | | | | | | |
| 4 | 040 | | | | | | | | |
| 4.7 | 4R7 | | | | | | | | |
| 5 | 050 | | | | | | | | |
| 6 | 060 | | | | | | | | |
| 6.8 | 6R8 | | | | | | | | |
| 7 | 070 | | | | | | | | |
| 8 | 080 | | | | | | | | |
| 9 | 090 | | | | | | | | |
| 10 | 100 | | | | | | | | |
| 12 | 120 | | | | | | | | |
| 15 | 150 | | | | | | | | |
| 18 | 180 | | | | | | | | |
| 22 | 220 | | | | | | | | |
| 27 | 270 | | | | | | | | |
| 33 | 330 | | | | | | | | |
| 39 | 390 | | | | | | | | |
| 47 | 470 | | | | | | | | |
| 56 | 560 | | | | | | | | |
| 68 | 680 | | | | | | | | |
| 82 | 820 | | | | | | | | |
| 100 | 101 | | | | | | | | |
| 120 | 121 | | | | | | | | |
| 150 | 151 | | | | | | | | |
| 180 | 181 | | | | | | | | |
| 220 | 221 | | | | | | | | |
| 270 | 271 | | | | | | | | |
| 330 | 331 | | | | | | | | |
| 390 | 391 | | | | | | | | |
| 470 | 471 | | | | | | | | |
| 560 | 561 | | | | | | | | |
| 680 | 681 | | | | | | | | |
| 820 | 821 | | | | | | | | |
| 1,000 | 102 | | | | | | | | |
| 1,200 | 122 | | | | | | | | |
| 1,500 | 152 | | | | | | | | |
| 1,800 | 182 | | | | | | | | |
| 2,200 | 222 | | | | | | | | |
| 2,700 | 272 | | | | | | | | |
| 3,300 | 332 | | | | | | | | |
| 3,900 | 392 | | | | | | | | |
| 4,700 | 472 | | | | | | | | |
| 5,600 | 562 | | | | | | | | |
| 6,800 | 682 | | | | | | | | |
| 8,200 | 822 | | | | | | | | |
| 10,000 | 103 | | | | | | | | |
| 15,000 | 153 | | | | | | | | |
| 22,000 | 223 | | | | | | | | |
| 33,000 | 333 | | | | | | | | |
| 47,000 | 473 | | | | | | | | |
| 68,000 | 683 | | | | | | | | |
| 100,000 | 104 | | | | | | | | |

标准厚度  0.8 mm

 灰色涂层的品名为不推荐用于新设计中的产品。

■关于产品厚度、静电容量公差等详细信息，请参照P-13以后的静电容量范围表。

⚠ 为了能够更加正确、安全地使用产品，请务必索取能进一步确认详细特性、规格的采购规格书。
记载内容可能因为产品改良等原因不经预告而更改，恕不另行通知。

电容范围图

C2012 [0805 inch]

| 电容 | | C0G | | | CH | | | JB | | X5R | | X7R | |
|---------|-----|--------------|--------------|--------------|--------------|--------------|--------------|--------------|--------------|--------------|--------------|--------------|--------------|
| (pF) | 代码 | 2W (450V) | 2E (250V) | 2A (100V) | 2W (450V) | 2E (250V) | 2A (100V) | 2E (250V) | 2A (100V) | 2E (250V) | 2A (100V) | 2E (250V) | 2A (100V) |
| 100 | 101 | ■ | | | ■ | | | | | | | | |
| 120 | 121 | ■ | | | ■ | | | | | | | | |
| 150 | 151 | ■ | | | ■ | | | | | | | | |
| 180 | 181 | ■ | | | ■ | | | | | | | | |
| 220 | 221 | ■ | | | ■ | | | | | | | | |
| 270 | 271 | ■ | | | ■ | | | | | | | | |
| 330 | 331 | ■ | | | ■ | | | | | | | | |
| 390 | 391 | ■ | | | ■ | | | | | | | | |
| 470 | 471 | ■ | | | ■ | | | | | | | | |
| 560 | 561 | ■ | | | ■ | | | | | | | | |
| 680 | 681 | ■ | | | ■ | | | | | | | | |
| 820 | 821 | ■ | ■ | | ■ | ■ | | | | | | | |
| 1,000 | 102 | ■ | ■ | ■ | ■ | ■ | ■ | ■ | ■ | ■ | ■ | ■ | ■ |
| 1,200 | 122 | ■ | ■ | ■ | ■ | ■ | ■ | ■ | ■ | ■ | ■ | ■ | ■ |
| 1,500 | 152 | ■ | ■ | ■ | ■ | ■ | ■ | ■ | ■ | ■ | ■ | ■ | ■ |
| 1,800 | 182 | ■ | ■ | ■ | ■ | ■ | ■ | ■ | ■ | ■ | ■ | ■ | ■ |
| 2,200 | 222 | ■ | ■ | ■ | ■ | ■ | ■ | ■ | ■ | ■ | ■ | ■ | ■ |
| 2,700 | 272 | ■ | ■ | ■ | ■ | ■ | ■ | ■ | ■ | ■ | ■ | ■ | ■ |
| 3,300 | 332 | ■ | ■ | ■ | ■ | ■ | ■ | ■ | ■ | ■ | ■ | ■ | ■ |
| 3,900 | 392 | ■ | ■ | ■ | ■ | ■ | ■ | ■ | ■ | ■ | ■ | ■ | ■ |
| 4,700 | 472 | ■ | ■ | ■ | ■ | ■ | ■ | ■ | ■ | ■ | ■ | ■ | ■ |
| 5,600 | 562 | ■ | ■ | ■ | ■ | ■ | ■ | ■ | ■ | ■ | ■ | ■ | ■ |
| 6,800 | 682 | ■ | ■ | ■ | ■ | ■ | ■ | ■ | ■ | ■ | ■ | ■ | ■ |
| 8,200 | 822 | ■ | ■ | ■ | ■ | ■ | ■ | ■ | ■ | ■ | ■ | ■ | ■ |
| 10,000 | 103 | ■ | ■ | ■ | ■ | ■ | ■ | ■ | ■ | ■ | ■ | ■ | ■ |
| 15,000 | 153 | ■ | ■ | ■ | ■ | ■ | ■ | ■ | ■ | ■ | ■ | ■ | ■ |
| 22,000 | 223 | ■ | ■ | ■ | ■ | ■ | ■ | ■ | ■ | ■ | ■ | ■ | ■ |
| 33,000 | 333 | ■ | ■ | ■ | ■ | ■ | ■ | ■ | ■ | ■ | ■ | ■ | ■ |
| 47,000 | 473 | ■ | ■ | ■ | ■ | ■ | ■ | ■ | ■ | ■ | ■ | ■ | ■ |
| 68,000 | 683 | ■ | ■ | ■ | ■ | ■ | ■ | ■ | ■ | ■ | ■ | ■ | ■ |
| 100,000 | 104 | ■ | ■ | ■ | ■ | ■ | ■ | ■ | ■ | ■ | ■ | ■ | ■ |

| 电容 | | X7S | X7T | | |
|-----------|-----|--------------|--------------|--------------|--------------|
| (pF) | 代码 | 2A (100V) | 2W (450V) | 2V (350V) | 2E (250V) |
| 10,000 | 103 | | ■ | ■ | |
| 15,000 | 153 | | ■ | ■ | |
| 22,000 | 223 | | ■ | ■ | ■ |
| 33,000 | 333 | | ■ | ■ | ■ |
| 47,000 | 473 | | ■ | ■ | ■ |
| 68,000 | 683 | | ■ | ■ | ■ |
| 100,000 | 104 | | ■ | ■ | ■ |
| 150,000 | 154 | ■ | | | |
| 220,000 | 224 | ■ | | | |
| 330,000 | 334 | ■ | | | |
| 470,000 | 474 | ■ | | | |
| 680,000 | 684 | ■ | | | |
| 1,000,000 | 105 | ■ | | | |

标准厚度 ■ 0.60 mm ■ 0.85 mm ■ 1.25 mm

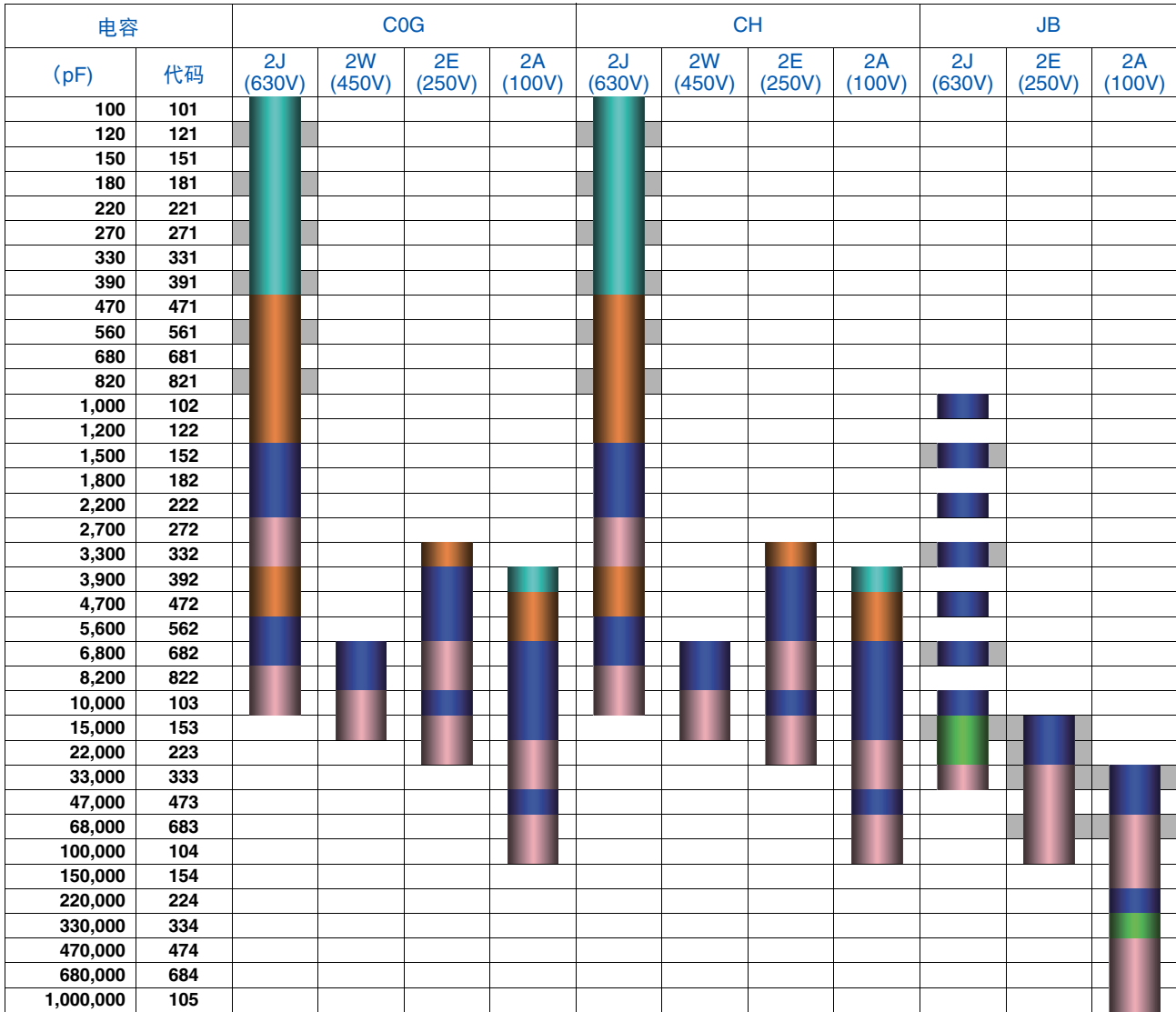
■ 灰色涂层的品名为不推荐用于新设计中的产品。

■ 关于产品厚度、静电容量公差等详细信息，请参照P-13以后的静电容量范围表。

⚠ 为了能够更加正确、安全地使用产品，请务必索取能进一步确认详细特性、规格的采购规格书。
记载内容可能因为产品改良等原因不经预告而更改，恕不另行通知。

电容范围图

C3216 [1206 inch]



标准厚度 0.85 mm 1.15 mm 1.30 mm 1.60 mm

灰色涂层的品名为不推荐用于新设计中的产品。

关于产品厚度，静电容量公差等详细信息，请参照P-13以后的静电容量范围表。

为了能够更加正确、安全地使用产品，请务必索取能进一步确认详细特性、规格的采购规格书。记载内容可能因为产品改良等原因不经预告而更改，恕不另行通知。

电容范围图

C3216 [1206 inch]

| 电容 | | X5R | | | X7R | | | X7S | X7T | | | |
|-----------|-----|--------------|--------------|--------------|--------------|--------------|--------------|--------------|--------------|--------------|--------------|--------------|
| (pF) | 代码 | 2J (630V) | 2E (250V) | 2A (100V) | 2J (630V) | 2E (250V) | 2A (100V) | 2A (100V) | 2J (630V) | 2W (450V) | 2V (350V) | 2E (250V) |
| 1,000 | 102 | ■ | | | ■ | | | | | | | |
| 1,500 | 152 | ■ | | | ■ | | | | | | | |
| 2,200 | 222 | ■ | | | ■ | | | | | | | |
| 3,300 | 332 | ■ | | | ■ | | | | | | | |
| 4,700 | 472 | ■ | | | ■ | | | | | | | |
| 6,800 | 682 | ■ | | | ■ | | | | | | | |
| 10,000 | 103 | ■ | | | ■ | | | | ■ | | | |
| 15,000 | 153 | ■ | | | ■ | ■ | | | ■ | | | |
| 22,000 | 223 | ■ | | | ■ | ■ | | | ■ | | | |
| 33,000 | 333 | ■ | ■ | | ■ | ■ | | | ■ | | | |
| 47,000 | 473 | | ■ | | | ■ | | | ■ | | | |
| 68,000 | 683 | | ■ | | | ■ | | | ■ | ■ | ■ | |
| 100,000 | 104 | | ■ | | | ■ | | | | ■ | ■ | |
| 150,000 | 154 | | | ■ | | ■ | | | | | ■ | ■ |
| 220,000 | 224 | | | ■ | | ■ | | | | | ■ | ■ |
| 330,000 | 334 | | | ■ | | ■ | | | | | | ■ |
| 470,000 | 474 | | | ■ | | ■ | | | | | | |
| 680,000 | 684 | | | ■ | | ■ | | | | | | |
| 1,000,000 | 105 | | | | | | | ■ | | | | |
| 1,500,000 | 155 | | | | | | | ■ | | | | |
| 2,200,000 | 225 | | | | | | | ■ | | | | |
| 3,300,000 | 335 | | | | | | | ■ | | | | |

标准厚度 ■ 0.85 mm ■ 1.15 mm ■ 1.30 mm ■ 1.60 mm

■ 灰色涂层的品名为不推荐用于新设计中的产品。

■ 关于产品厚度、静电容量公差等详细信息，请参照P-13以后的静电容量范围表。


电容范围图

C3225 [1210 inch]

| 电容 | | COG | | | | CH | | | | JB | | |
|-----------|-----|--------------|--------------|--------------|--------------|--------------|--------------|--------------|--------------|--------------|--------------|--------------|
| (pF) | 代码 | 2J (630V) | 2W (450V) | 2E (250V) | 2A (100V) | 2J (630V) | 2W (450V) | 2E (250V) | 2A (100V) | 2J (630V) | 2E (250V) | 2A (100V) |
| 3,900 | 392 | | | | | | | | | | | |
| 4,700 | 472 | | | | | | | | | | | |
| 5,600 | 562 | | | | | | | | | | | |
| 6,800 | 682 | | | | | | | | | | | |
| 8,200 | 822 | | | | | | | | | | | |
| 10,000 | 103 | | | | | | | | | | | |
| 15,000 | 153 | | | | | | | | | | | |
| 22,000 | 223 | | | | | | | | | | | |
| 33,000 | 333 | | | | | | | | | | | |
| 47,000 | 473 | | | | | | | | | | | |
| 68,000 | 683 | | | | | | | | | | | |
| 100,000 | 104 | | | | | | | | | | | |
| 150,000 | 154 | | | | | | | | | | | |
| 220,000 | 224 | | | | | | | | | | | |
| 330,000 | 334 | | | | | | | | | | | |
| 470,000 | 474 | | | | | | | | | | | |
| 680,000 | 684 | | | | | | | | | | | |
| 1,000,000 | 105 | | | | | | | | | | | |
| 1,500,000 | 155 | | | | | | | | | | | |
| 2,200,000 | 225 | | | | | | | | | | | |

| 电容 | | X5R | | | X7R | | | X7S | X7T | | |
|-----------|-----|--------------|--------------|--------------|--------------|--------------|--------------|--------------|--------------|--------------|--------------|
| (pF) | 代码 | 2J (630V) | 2E (250V) | 2A (100V) | 2J (630V) | 2E (250V) | 2A (100V) | 2A (100V) | 2J (630V) | 2W (450V) | 2E (250V) |
| 47,000 | 473 | | | | | | | | | | |
| 68,000 | 683 | | | | | | | | | | |
| 100,000 | 104 | | | | | | | | | | |
| 150,000 | 154 | | | | | | | | | | |
| 220,000 | 224 | | | | | | | | | | |
| 330,000 | 334 | | | | | | | | | | |
| 470,000 | 474 | | | | | | | | | | |
| 680,000 | 684 | | | | | | | | | | |
| 1,000,000 | 105 | | | | | | | | | | |
| 1,500,000 | 155 | | | | | | | | | | |
| 2,200,000 | 225 | | | | | | | | | | |
| 3,300,000 | 335 | | | | | | | | | | |
| 4,700,000 | 475 | | | | | | | | | | |

标准厚度  1.25 mm  1.60 mm  2.00 mm  2.30 mm  2.50 mm

 灰色涂层的品名为不推荐用于新设计中的产品。

■关于产品厚度、静电容量公差等详细信息，请参照P-13以后的静电容量范围表。


电容范围图

C4532 [1812 inch]

| 电容 | | C0G | | | | CH | | | | JB | | |
|-----------|-----|--------------|--------------|--------------|--------------|--------------|--------------|--------------|--------------|--------------|--------------|--------------|
| (pF) | 代码 | 2J (630V) | 2W (450V) | 2E (250V) | 2A (100V) | 2J (630V) | 2W (450V) | 2E (250V) | 2A (100V) | 2J (630V) | 2E (250V) | 2A (100V) |
| 8,200 | 822 | | | | | | | | | | | |
| 10,000 | 103 | | | | | | | | | | | |
| 15,000 | 153 | | | | | | | | | | | |
| 22,000 | 223 | | | | | | | | | | | |
| 33,000 | 333 | | | | | | | | | | | |
| 47,000 | 473 | | | | | | | | | | | |
| 68,000 | 683 | | | | | | | | | | | |
| 100,000 | 104 | | | | | | | | | | | |
| 150,000 | 154 | | | | | | | | | | | |
| 220,000 | 224 | | | | | | | | | | | |
| 330,000 | 334 | | | | | | | | | | | |
| 470,000 | 474 | | | | | | | | | | | |
| 680,000 | 684 | | | | | | | | | | | |
| 1,000,000 | 105 | | | | | | | | | | | |
| 1,500,000 | 155 | | | | | | | | | | | |
| 2,200,000 | 225 | | | | | | | | | | | |

| 电容 | | X5R | | X7R | | | X7S | X7T | | |
|-----------|-----|--------------|--------------|--------------|--------------|--------------|--------------|--------------|--------------|--------------|
| (pF) | 代码 | 2J (630V) | 2E (250V) | 2J (630V) | 2E (250V) | 2A (100V) | 2A (100V) | 2J (630V) | 2W (450V) | 2E (250V) |
| 68,000 | 683 | | | | | | | | | |
| 100,000 | 104 | | | | | | | | | |
| 150,000 | 154 | | | | | | | | | |
| 220,000 | 224 | | | | | | | | | |
| 300,000 | 304 | | | | | | | | | |
| 330,000 | 334 | | | | | | | | | |
| 470,000 | 474 | | | | | | | | | |
| 680,000 | 684 | | | | | | | | | |
| 1,000,000 | 105 | | | | | | | | | |
| 1,500,000 | 155 | | | | | | | | | |
| 2,200,000 | 225 | | | | | | | | | |
| 3,300,000 | 335 | | | | | | | | | |
| 4,700,000 | 475 | | | | | | | | | |

标准厚度  1.60 mm  2.00 mm  2.30 mm  2.50 mm  3.20 mm

 灰色涂层的品名为不推荐用于新设计中的产品。

■关于产品厚度、静电容量公差等详细信息，请参照P-13以后的静电容量范围表。

电容范围图

C5750 [2220 inch]

| 电容 | | C0G | | | | CH | | | | JB | | |
|-----------|-----|--------------|--------------|--------------|--------------|--------------|--------------|--------------|--------------|--------------|--------------|--------------|
| (pF) | 代码 | 2J (630V) | 2W (450V) | 2E (250V) | 2A (100V) | 2J (630V) | 2W (450V) | 2E (250V) | 2A (100V) | 2J (630V) | 2E (250V) | 2A (100V) |
| 68,000 | 683 | | | | | | | | | | | |
| 100,000 | 104 | | | | | | | | | | | |
| 150,000 | 154 | | | | | | | | | | | |
| 220,000 | 224 | | | | | | | | | | | |
| 330,000 | 334 | | | | | | | | | | | |
| 470,000 | 474 | | | | | | | | | | | |
| 680,000 | 684 | | | | | | | | | | | |
| 1,000,000 | 105 | | | | | | | | | | | |
| 1,500,000 | 155 | | | | | | | | | | | |
| 2,200,000 | 225 | | | | | | | | | | | |
| 3,300,000 | 335 | | | | | | | | | | | |
| 4,700,000 | 475 | | | | | | | | | | | |

| 电容 | | X5R | | | X6S | X7R | | | X7S | X7T | | |
|------------|-----|--------------|--------------|--------------|--------------|--------------|--------------|--------------|--------------|--------------|--------------|--------------|
| (pF) | 代码 | 2J (630V) | 2E (250V) | 2A (100V) | 2W (450V) | 2J (630V) | 2E (250V) | 2A (100V) | 2A (100V) | 2J (630V) | 2W (450V) | 2E (250V) |
| 150,000 | 154 | | | | | | | | | | | |
| 220,000 | 224 | | | | | | | | | | | |
| 330,000 | 334 | | | | | | | | | | | |
| 470,000 | 474 | | | | | | | | | | | |
| 680,000 | 684 | | | | | | | | | | | |
| 1,000,000 | 105 | | | | | | | | | | | |
| 1,500,000 | 155 | | | | | | | | | | | |
| 2,200,000 | 225 | | | | | | | | | | | |
| 3,300,000 | 335 | | | | | | | | | | | |
| 4,700,000 | 475 | | | | | | | | | | | |
| 6,800,000 | 685 | | | | | | | | | | | |
| 10,000,000 | 106 | | | | | | | | | | | |
| 15,000,000 | 156 | | | | | | | | | | | |
| 22,000,000 | 226 | | | | | | | | | | | |

标准厚度 1.60 mm 2.00 mm 2.30 mm 2.50 mm 2.80 mm

灰色涂层的品名为不推荐用于新设计中的产品。

■关于产品厚度、静电容量公差等详细信息，请参照P-13以后的静电容量范围表。

电容范围表

温度特性: C0G (-55 to +125°C、0±30ppm/°C)

| 电容 | 尺寸 | 厚度 (mm) | 电容容差 | 目录型号 | | | |
|-------|-----------|------------|---------------------|---------------------|----------------|---------------------|---------------------|
| | | | | 额定电压 Edc: 630V | 额定电压 Edc: 450V | 额定电压 Edc: 250V | 额定电压 Edc: 100V |
| 1pF | 1608 | 0.80±0.10 | ±0.25pF | | | | C1608C0G2A010C080AA |
| 1.5pF | 1608 | 0.80±0.10 | ±0.25pF | | | | C1608C0G2A1R5C080AA |
| 2pF | 1608 | 0.80±0.10 | ±0.25pF | | | | C1608C0G2A020C080AA |
| 2.2pF | 1608 | 0.80±0.10 | ±0.25pF | | | | C1608C0G2A2R2C080AA |
| 3pF | 1608 | 0.80±0.10 | ±0.25pF | | | | C1608C0G2A030C080AA |
| 3.3pF | 1608 | 0.80±0.10 | ±0.25pF | | | | C1608C0G2A3R3C080AA |
| 4pF | 1608 | 0.80±0.10 | ±0.25pF | | | | C1608C0G2A040C080AA |
| 4.7pF | 1608 | 0.80±0.10 | ±0.25pF | | | | C1608C0G2A4R7C080AA |
| 5pF | 1608 | 0.80±0.10 | ±0.25pF | | | | C1608C0G2A050C080AA |
| 6pF | 1608 | 0.80±0.10 | ±0.50pF | | | | C1608C0G2A060D080AA |
| 6.8pF | 1608 | 0.80±0.10 | ±0.50pF | | | | C1608C0G2A6R8D080AA |
| 7pF | 1608 | 0.80±0.10 | ±0.50pF | | | | C1608C0G2A070D080AA |
| 8pF | 1608 | 0.80±0.10 | ±0.50pF | | | | C1608C0G2A080D080AA |
| 9pF | 1608 | 0.80±0.10 | ±0.50pF | | | | C1608C0G2A090D080AA |
| 10pF | 1608 | 0.80±0.10 | ±0.50pF | | | | C1608C0G2A100D080AA |
| 12pF | 1608 | 0.80±0.10 | ±5% | | | | C1608C0G2A120J080AA |
| 15pF | 1608 | 0.80±0.10 | ±5% | | | | C1608C0G2A150J080AA |
| 18pF | 1608 | 0.80±0.10 | ±5% | | | | C1608C0G2A180J080AA |
| 22pF | 1608 | 0.80±0.10 | ±5% | | | | C1608C0G2A220J080AA |
| 27pF | 1608 | 0.80±0.10 | ±5% | | | | C1608C0G2A270J080AA |
| 33pF | 1608 | 0.80±0.10 | ±5% | | | | C1608C0G2A330J080AA |
| 39pF | 1608 | 0.80±0.10 | ±5% | | | | C1608C0G2A390J080AA |
| 47pF | 1608 | 0.80±0.10 | ±5% | | | | C1608C0G2A470J080AA |
| 56pF | 1608 | 0.80±0.10 | ±5% | | | | C1608C0G2A560J080AA |
| 68pF | 1608 | 0.80±0.10 | ±5% | | | | C1608C0G2A680J080AA |
| 82pF | 1608 | 0.80±0.10 | ±5% | | | | C1608C0G2A820J080AA |
| 100pF | 1005 | 0.50±0.05 | ±10% | | | | C1005C0G2A101K050BA |
| | | | ±5% | | | | C1005C0G2A101J050BA |
| | 1608 | 0.80±0.10 | ±10% | | | C1608C0G2E101K080AA | C1608C0G2A101K080AA |
| | | | ±5% | | | C1608C0G2E101J080AA | C1608C0G2A101J080AA |
| | | | ±2% | | | | C1608C0G2A101G080AA |
| | | | ±1% | | | | C1608C0G2A101F080AA |
| | 2012 | 0.60±0.15 | ±10% | | | C2012C0G2W101K060AA | |
| | | | ±5% | | | C2012C0G2W101J060AA | |
| | 3216 | 0.60±0.15 | ±10% | C3216C0G2J101K060AA | | | |
| | | | ±5% | C3216C0G2J101J060AA | | | |
| 120pF | 1005 | 0.50±0.05 | ±10% | | | | C1005C0G2A121K050BA |
| | | | ±5% | | | | C1005C0G2A121J050BA |
| | 1608 | 0.80±0.10 | ±10% | | | C1608C0G2E121K080AA | C1608C0G2A121K080AA |
| | | | ±5% | | | C1608C0G2E121J080AA | C1608C0G2A121J080AA |
| | 2012 | 0.60±0.15 | ±10% | | | C2012C0G2W121K060AA | |
| | | | ±5% | | | C2012C0G2W121J060AA | |
| 3216 | 0.60±0.15 | ±10% | C3216C0G2J121K060AA | | | | |
| | | ±5% | C3216C0G2J121J060AA | | | | |
| 150pF | 1005 | 0.50±0.05 | ±10% | | | | C1005C0G2A151K050BA |
| | | | ±5% | | | | C1005C0G2A151J050BA |
| | 1608 | 0.80±0.10 | ±10% | | | C1608C0G2E151K080AA | C1608C0G2A151K080AA |
| | | | ±5% | | | C1608C0G2E151J080AA | C1608C0G2A151J080AA |
| | 2012 | 0.60±0.15 | ±10% | | | C2012C0G2W151K060AA | |
| | | | ±5% | | | C2012C0G2W151J060AA | |
| 3216 | 0.60±0.15 | ±10% | C3216C0G2J151K060AA | | | | |
| | | ±5% | C3216C0G2J151J060AA | | | | |
| 180pF | 1005 | 0.50±0.05 | ±10% | | | | C1005C0G2A181K050BA |
| | | | ±5% | | | | C1005C0G2A181J050BA |
| | 1608 | 0.80±0.10 | ±10% | | | C1608C0G2E181K080AA | C1608C0G2A181K080AA |
| | | | ±5% | | | C1608C0G2E181J080AA | C1608C0G2A181J080AA |
| | 2012 | 0.60±0.15 | ±10% | | | C2012C0G2W181K060AA | |
| | | | ±5% | | | C2012C0G2W181J060AA | |
| 3216 | 0.60±0.15 | ±10% | C3216C0G2J181K060AA | | | | |
| | | ±5% | C3216C0G2J181J060AA | | | | |
| 220pF | 1005 | 0.50±0.05 | ±10% | | | | C1005C0G2A221K050BA |
| | | | ±5% | | | | C1005C0G2A221J050BA |
| | 1608 | 0.80±0.10 | ±10% | | | C1608C0G2E221K080AA | C1608C0G2A221K080AA |
| | | | ±5% | | | C1608C0G2E221J080AA | C1608C0G2A221J080AA |
| | 2012 | 0.60±0.15 | ±10% | | | C2012C0G2W221K060AA | |
| | | | ±5% | | | C2012C0G2W221J060AA | |
| 3216 | 0.60±0.15 | ±10% | C3216C0G2J221K060AA | | | | |
| | | ±5% | C3216C0G2J221J060AA | | | | |

■ 灰色涂层的品名为不推荐用于新设计中的产品。

⚠ 为了能够更加正确、安全地使用产品，请务必索取能进一步确认详细特性、规格的采购规格书。
 记载内容可能因为产品改良等原因不经预告而更改，恕不另行通知。

电容范围表

温度特性: C0G (-55 to +125°C、0±30ppm/°C)

| 电容 | 尺寸 | 厚度 (mm) | 电容容差 | 目录型号 | | | |
|-------|-----------|------------|---------------------|---------------------|---------------------|---------------------|---------------------|
| | | | | 额定电压 Edc: 630V | 额定电压 Edc: 450V | 额定电压 Edc: 250V | 额定电压 Edc: 100V |
| 270pF | 1005 | 0.50±0.05 | ±10% | | | | C1005C0G2A271K050BA |
| | | | ±5% | | | C1005C0G2A271J050BA | |
| | 1608 | 0.80±0.10 | ±10% | | C1608C0G2E271K080AA | C1608C0G2A271K080AA | |
| | | | ±5% | | C1608C0G2E271J080AA | C1608C0G2A271J080AA | |
| 2012 | 0.60±0.15 | ±10% | | C2012C0G2W271K060AA | | | |
| | | ±5% | | C2012C0G2W271J060AA | | | |
| 3216 | 0.60±0.15 | ±10% | C3216C0G2J271K060AA | | | | |
| | | ±5% | C3216C0G2J271J060AA | | | | |
| 330pF | 1005 | 0.50±0.05 | ±10% | | | | C1005C0G2A331K050BA |
| | | | ±5% | | | C1005C0G2A331J050BA | |
| | 1608 | 0.80±0.10 | ±10% | | C1608C0G2E331K080AA | C1608C0G2A331K080AA | |
| | | | ±5% | | C1608C0G2E331J080AA | C1608C0G2A331J080AA | |
| 2012 | 0.60±0.15 | ±10% | | C2012C0G2W331K060AA | | | |
| | | ±5% | | C2012C0G2W331J060AA | | | |
| 3216 | 0.60±0.15 | ±10% | C3216C0G2J331K060AA | | | | |
| | | ±5% | C3216C0G2J331J060AA | | | | |
| 390pF | 1005 | 0.50±0.05 | ±10% | | | | C1005C0G2A391K050BA |
| | | | ±5% | | | C1005C0G2A391J050BA | |
| | 1608 | 0.80±0.10 | ±10% | | C1608C0G2E391K080AA | C1608C0G2A391K080AA | |
| | | | ±5% | | C1608C0G2E391J080AA | C1608C0G2A391J080AA | |
| 2012 | 0.60±0.15 | ±10% | | C2012C0G2W391K060AA | | | |
| | | ±5% | | C2012C0G2W391J060AA | | | |
| 3216 | 0.60±0.15 | ±10% | C3216C0G2J391K060AA | | | | |
| | | ±5% | C3216C0G2J391J060AA | | | | |
| 470pF | 1005 | 0.50±0.05 | ±10% | | | | C1005C0G2A471K050BA |
| | | | ±5% | | | C1005C0G2A471J050BA | |
| | 1608 | 0.80±0.10 | ±10% | | C1608C0G2E471K080AA | C1608C0G2A471K080AA | |
| | | | ±5% | | C1608C0G2E471J080AA | C1608C0G2A471J080AA | |
| 2012 | 0.60±0.15 | ±10% | | C2012C0G2W471K060AA | | | |
| | | ±5% | | C2012C0G2W471J060AA | | | |
| 3216 | 0.85±0.15 | ±10% | C3216C0G2J471K085AA | | | | |
| | | ±5% | C3216C0G2J471J085AA | | | | |
| 560pF | 1005 | 0.50±0.05 | ±10% | | | | C1005C0G2A561K050BC |
| | | | ±5% | | | C1005C0G2A561J050BC | |
| | 1608 | 0.80±0.10 | ±10% | | C1608C0G2E561K080AA | C1608C0G2A561K080AA | |
| | | | ±5% | | C1608C0G2E561J080AA | C1608C0G2A561J080AA | |
| 2012 | 0.60±0.15 | ±10% | | C2012C0G2W561K060AA | | | |
| | | ±5% | | C2012C0G2W561J060AA | | | |
| 3216 | 0.85±0.15 | ±10% | C3216C0G2J561K085AA | | | | |
| | | ±5% | C3216C0G2J561J085AA | | | | |
| 680pF | 1005 | 0.50±0.05 | ±10% | | | | C1005C0G2A681K050BC |
| | | | ±5% | | | C1005C0G2A681J050BC | |
| | 1608 | 0.80±0.10 | ±10% | | C1608C0G2E681K080AA | C1608C0G2A681K080AA | |
| | | | ±5% | | C1608C0G2E681J080AA | C1608C0G2A681J080AA | |
| 2012 | 0.60±0.15 | ±10% | | C2012C0G2W681K060AA | | | |
| | | ±5% | | C2012C0G2W681J060AA | | | |
| 3216 | 0.85±0.15 | ±10% | C3216C0G2J681K085AA | | | | |
| | | ±5% | C3216C0G2J681J085AA | | | | |
| 820pF | 1005 | 0.50±0.05 | ±10% | | | | C1005C0G2A821K050BC |
| | | | ±5% | | | C1005C0G2A821J050BC | |
| | 1608 | 0.80±0.10 | ±10% | | C1608C0G2E821K080AA | C1608C0G2A821K080AA | |
| | | | ±5% | | C1608C0G2E821J080AA | C1608C0G2A821J080AA | |
| 2012 | 0.60±0.15 | ±10% | | C2012C0G2W821K060AA | C2012C0G2E821K060AA | | |
| | | ±5% | | C2012C0G2W821J060AA | C2012C0G2E821J060AA | | |
| 3216 | 0.85±0.15 | ±10% | C3216C0G2J821K085AA | | | | |
| | | ±5% | C3216C0G2J821J085AA | | | | |
| 1nF | 1005 | 0.50±0.05 | ±10% | | | | C1005C0G2A102K050BC |
| | | | ±5% | | | C1005C0G2A102J050BC | |
| | 1608 | 0.80±0.10 | ±10% | | C1608C0G2E102K080AA | C1608C0G2A102K080AA | |
| | | | ±5% | | C1608C0G2E102J080AA | C1608C0G2A102J080AA | |
| 2012 | 0.60±0.15 | ±10% | | C2012C0G2W102K060AA | | | |
| | | ±5% | | C2012C0G2W102J060AA | C2012C0G2A102J060AA | | |
| 3216 | 0.85±0.15 | ±10% | C3216C0G2J102K085AA | | | | |
| | | ±5% | C3216C0G2J102J085AA | | | | |

■ 灰色涂层的品名为不推荐用于新设计中的产品。

⚠ 为了能够更加正确、安全地使用产品，请务必索取能进一步确认详细特性、规格的采购规格书。
记载内容可能因为产品改良等原因不经预告而更改，恕不另行通知。

电容范围表

温度特性: C0G (-55 to +125°C、0±30ppm/°C)

| 电容 | 尺寸 | 厚度 (mm) | 电容容差 | 目录型号 | | | |
|-------|-----------|-----------------|------|---------------------|---------------------|---------------------|---------------------|
| | | | | 额定电压 Edc: 630V | 额定电压 Edc: 450V | 额定电压 Edc: 250V | 额定电压 Edc: 100V |
| 1.2nF | 1608 | 0.80±0.10 | ±10% | | | C1608C0G2E122K080AA | C1608C0G2A122K080AA |
| | | | ±5% | | | C1608C0G2E122J080AA | C1608C0G2A122J080AA |
| | 2012 | 0.60±0.15 | ±10% | | C2012C0G2W122K060AA | | |
| | | | ±5% | | C2012C0G2W122J060AA | | C2012C0G2A122J060AA |
| | 3216 | 0.85±0.15 | ±10% | | | C2012C0G2E122K085AA | |
| | | | ±5% | | | C2012C0G2E122J085AA | |
| | | | ±10% | C3216C0G2J122K085AA | | | |
| | | | ±5% | C3216C0G2J122J085AA | | | |
| 1.5nF | 1608 | 0.80±0.10 | ±10% | | | C1608C0G2E152K080AA | C1608C0G2A152K080AA |
| | | | ±5% | | | C1608C0G2E152J080AA | C1608C0G2A152J080AA |
| | 2012 | 0.60±0.15 | ±10% | | | | C2012C0G2A152K060AA |
| | | | ±5% | | | | C2012C0G2A152J060AA |
| | 3216 | 1.15±0.15 | ±10% | | C2012C0G2W152K085AA | C2012C0G2E152K085AA | |
| | | | ±5% | | C2012C0G2W152J085AA | C2012C0G2E152J085AA | |
| | | | ±10% | C3216C0G2J152K115AA | | | |
| | | | ±5% | C3216C0G2J152J115AA | | | |
| 1.8nF | 1608 | 0.80±0.10 | ±10% | | | C1608C0G2E182K080AA | C1608C0G2A182K080AA |
| | | | ±5% | | | C1608C0G2E182J080AA | C1608C0G2A182J080AA |
| | 2012 | 0.85±0.15 | ±10% | | C2012C0G2W182K085AA | | C2012C0G2A182K085AA |
| | | | ±5% | | C2012C0G2W182J085AA | | C2012C0G2A182J085AA |
| | 3216 | 1.15±0.15 | ±10% | | | C2012C0G2E182K125AA | |
| | | | ±5% | | | C2012C0G2E182J125AA | |
| | | | ±10% | C3216C0G2J182K115AA | | | |
| | | | ±5% | C3216C0G2J182J115AA | | | |
| 2.2nF | 1608 | 0.80±0.10 | ±10% | | | | C1608C0G2A222K080AA |
| | | | ±5% | | | | C1608C0G2A222J080AA |
| | 2012 | 0.85±0.15 | ±10% | | C2012C0G2W222K085AA | | C2012C0G2A222K085AA |
| | | | ±5% | | C2012C0G2W222J085AA | | C2012C0G2A222J085AA |
| | 3216 | 1.15±0.15 | ±10% | | | C2012C0G2E222K125AA | |
| | | | ±5% | | | C2012C0G2E222J125AA | |
| | | | ±10% | C3216C0G2J222K115AA | | | |
| | | | ±5% | C3216C0G2J222J115AA | | | |
| 2.7nF | 1608 | 0.80±0.15,-0.10 | ±10% | | | | C1608C0G2A272K080AA |
| | | | ±5% | | | | C1608C0G2A272J080AA |
| | 2012 | 1.25±0.20 | ±10% | | C2012C0G2W272K125AA | C2012C0G2E272K125AA | C2012C0G2A272K125AA |
| | | | ±5% | | C2012C0G2W272J125AA | C2012C0G2E272J125AA | C2012C0G2A272J125AA |
| | 3216 | 1.60±0.20 | ±10% | | C3216C0G2J272K160AA | | |
| | | | ±5% | | C3216C0G2J272J160AA | | |
| | | | ±10% | | | C1608C0G2A332K080AA | |
| | | | ±5% | | | C1608C0G2A332J080AA | |
| 3.3nF | 1608 | 0.80±0.15,-0.10 | ±10% | | | | C1608C0G2A332K080AA |
| | | | ±5% | | | | C1608C0G2A332J080AA |
| | 2012 | 0.85±0.15 | ±10% | | | C2012C0G2E332K085AA | |
| | | | ±5% | | | C2012C0G2E332J085AA | |
| | 3216 | 0.85±0.15 | ±10% | | C2012C0G2W332K125AA | | C2012C0G2A332K125AA |
| | | | ±5% | | C2012C0G2W332J125AA | | C2012C0G2A332J125AA |
| 3216 | 1.60±0.20 | ±10% | | | C3216C0G2E332K085AA | | |
| | | ±5% | | | C3216C0G2E332J085AA | | |
| | | | ±10% | C3216C0G2J332K160AA | | | |
| | | | ±5% | C3216C0G2J332J160AA | | | |
| 3.9nF | 1608 | 0.80±0.10 | ±10% | | | | C1608C0G2A392K080AC |
| | | | ±5% | | | | C1608C0G2A392J080AC |
| | 2012 | 1.25±0.20 | ±10% | | C2012C0G2W392K125AA | C2012C0G2E392K125AA | C2012C0G2A392K125AA |
| | | | ±5% | | C2012C0G2W392J125AA | C2012C0G2E392J125AA | C2012C0G2A392J125AA |
| | 3216 | 0.60±0.15 | ±10% | | | | C3216C0G2A392K060AA |
| | | | ±5% | | | | C3216C0G2A392J060AA |
| 3216 | 0.85±0.15 | ±10% | | C3216C0G2J392K085AA | | | |
| | | ±5% | | C3216C0G2J392J085AA | | | |
| 3225 | 1.15±0.15 | ±10% | | | C3216C0G2E392K115AA | | |
| | | ±5% | | | C3216C0G2E392J115AA | | |
| | | | ±10% | C3225C0G2J392K125AA | | | |
| | | | ±5% | C3225C0G2J392J125AA | | | |

■ 灰色涂层的品名为不推荐用于新设计中的产品。

⚠ 为了能够更加正确、安全地使用产品，请务必索取能进一步确认详细特性、规格的采购规格书。
 记载内容可能因为产品改良等原因不经预告而更改，恕不另行通知。

MULTILAYER CERAMIC CHIP CAPACITORS TDK

电容范围表

温度特性: C0G (-55 to +125°C、0±30ppm/°C)

| 电容 | 尺寸 | 厚度 (mm) | 电容容差 | 目录型号 | | | |
|-------|-----------|-----------|---------------------|---------------------|---------------------|---------------------|---------------------|
| | | | | 额定电压 Edc: 630V | 额定电压 Edc: 450V | 额定电压 Edc: 250V | 额定电压 Edc: 100V |
| 4.7nF | 1608 | 0.80±0.10 | ±10% | | | | C1608C0G2A472K080AC |
| | | | ±5% | | | | C1608C0G2A472J080AC |
| | 2012 | 1.25±0.20 | ±10% | | C2012C0G2W472K125AA | C2012C0G2E472K125AA | C2012C0G2A472K125AA |
| | | | ±5% | | C2012C0G2W472J125AA | C2012C0G2E472J125AA | C2012C0G2A472J125AA |
| | 3216 | 0.85±0.15 | ±10% | C3216C0G2J472K085AA | | | C3216C0G2A472K085AA |
| | | | ±5% | C3216C0G2J472J085AA | | | C3216C0G2A472J085AA |
| | 3216 | 1.15±0.15 | ±10% | | | C3216C0G2E472K115AA | |
| | | | ±5% | | | C3216C0G2E472J115AA | |
| 3225 | 1.60±0.20 | ±10% | C3225C0G2J472K160AA | | | | |
| | | ±5% | C3225C0G2J472J160AA | | | | |
| 5.6nF | 1608 | 0.80±0.10 | ±10% | | | | C1608C0G2A562K080AC |
| | | | ±5% | | | | C1608C0G2A562J080AC |
| | 2012 | 1.25±0.20 | ±10% | | C2012C0G2W562K125AA | C2012C0G2E562K125AA | C2012C0G2A562K125AA |
| | | | ±5% | | C2012C0G2W562J125AA | C2012C0G2E562J125AA | C2012C0G2A562J125AA |
| | 3216 | 0.85±0.15 | ±10% | C3216C0G2J562K115AA | | | C3216C0G2A562K085AA |
| | | | ±5% | C3216C0G2J562J115AA | | | C3216C0G2A562J085AA |
| | 3216 | 1.15±0.15 | ±10% | | | C3216C0G2E562K115AA | |
| | | | ±5% | | | C3216C0G2E562J115AA | |
| 3225 | 1.60±0.20 | ±10% | C3225C0G2J562K160AA | | | | |
| | | ±5% | C3225C0G2J562J160AA | | | | |
| 6.8nF | 1608 | 0.80±0.10 | ±10% | | | | C1608C0G2A682K080AC |
| | | | ±5% | | | | C1608C0G2A682J080AC |
| | 2012 | 1.25±0.20 | ±10% | | | C2012C0G2E682K125AA | C2012C0G2A682K125AA |
| | | | ±5% | | | C2012C0G2E682J125AA | C2012C0G2A682J125AA |
| | 3216 | 1.15±0.15 | ±10% | C3216C0G2J682K115AA | C3216C0G2W682K115AA | | C3216C0G2A682K115AA |
| | | | ±5% | C3216C0G2J682J115AA | C3216C0G2W682J115AA | | C3216C0G2A682J115AA |
| | 3216 | 1.60±0.20 | ±10% | | | C3216C0G2E682K160AA | |
| | | | ±5% | | | C3216C0G2E682J160AA | |
| 3225 | 2.00±0.20 | ±10% | C3225C0G2J682K200AA | | | | |
| | | ±5% | C3225C0G2J682J200AA | | | | |
| 8.2nF | 1608 | 0.80±0.10 | ±10% | | | | C1608C0G2A822K080AC |
| | | | ±5% | | | | C1608C0G2A822J080AC |
| | 2012 | 1.25±0.20 | ±10% | | | C2012C0G2E822K125AA | C2012C0G2A822K125AA |
| | | | ±5% | | | C2012C0G2E822J125AA | C2012C0G2A822J125AA |
| | 3216 | 1.15±0.15 | ±10% | | C3216C0G2W822K115AA | | C3216C0G2A822K115AA |
| | | | ±5% | | C3216C0G2W822J115AA | | C3216C0G2A822J115AA |
| | 3216 | 1.60±0.20 | ±10% | C3216C0G2J822K160AA | | | C3216C0G2E822K160AA |
| | | | ±5% | C3216C0G2J822J160AA | | | C3216C0G2E822J160AA |
| 3225 | 1.25±0.20 | ±10% | C3225C0G2J822K125AA | | | | |
| | | ±5% | C3225C0G2J822J125AA | | | | |
| 4532 | 1.60±0.20 | ±10% | C4532C0G2J822K160KA | | | | |
| | | ±5% | C4532C0G2J822J160KA | | | | |
| 10nF | 1608 | 0.80±0.10 | ±10% | | | | C1608C0G2A103K080AC |
| | | | ±5% | | | | C1608C0G2A103J080AC |
| | 2012 | 1.25±0.20 | ±10% | | | C2012C0G2E103K125AA | C2012C0G2A103K125AA |
| | | | ±5% | | | C2012C0G2E103J125AA | C2012C0G2A103J125AA |
| | 3216 | 1.15±0.15 | ±10% | | C3216C0G2W103K115AA | | C3216C0G2A103K115AA |
| | | | ±5% | | C3216C0G2W103J115AA | | C3216C0G2A103J115AA |
| | 3216 | 1.60±0.20 | ±10% | C3216C0G2J103K160AA | C3216C0G2W103K160AA | | |
| | | | ±5% | C3216C0G2J103J160AA | C3216C0G2W103J160AA | | |
| 3225 | 1.25±0.20 | ±10% | C3225C0G2J103K125AA | | | | |
| | | ±5% | C3225C0G2J103J125AA | | | | |
| 4532 | 1.60±0.20 | ±10% | C4532C0G2J103K160KA | | | | |
| | | ±5% | C4532C0G2J103J160KA | | | | |

■ 灰色涂层的品名为不推荐用于新设计中的产品。

⚠ 为了能够更加正确、安全地使用产品，请务必索取能进一步确认详细特性、规格的采购规格书。
 记载内容可能因为产品改良等原因不经预告而更改，恕不另行通知。

MULTILAYER CERAMIC CHIP CAPACITORS



电容范围表

温度特性: C0G (-55 to +125°C、0±30ppm/°C)

| 电容 | 尺寸 | 厚度 (mm) | 电容容差 | 目录型号 | | | |
|------|-----------|-----------------|---------------------|---------------------|---------------------|---------------------|---------------------|
| | | | | 额定电压 Edc: 630V | 额定电压 Edc: 450V | 额定电压 Edc: 250V | 额定电压 Edc: 100V |
| 15nF | 2012 | 0.85±0.15 | ±10% | | | | C2012C0G2A153K085AC |
| | | | ±5% | | | | C2012C0G2A153J085AC |
| | 3216 | 1.15±0.15 | ±10% | | | | C3216C0G2A153K115AA |
| | | | ±5% | | | | C3216C0G2A153J115AA |
| | 3216 | 1.60±0.20 | ±10% | | | C3216C0G2E153K160AA | |
| | | | ±5% | | | C3216C0G2E153J160AA | |
| | 3216 | 1.60±0.30,-0.10 | ±10% | | C3216C0G2W153K160AA | | |
| | | | ±5% | | C3216C0G2W153J160AA | | |
| | 3225 | 1.25±0.20 | ±10% | | | | C3225C0G2A153K125AA |
| | | | ±5% | | | | C3225C0G2A153J125AA |
| 3225 | 1.60±0.20 | ±10% | C3225C0G2J153K160AA | | | | |
| | | ±5% | C3225C0G2J153J160AA | | | | |
| 4532 | 2.50±0.30 | ±10% | C4532C0G2J153K250KA | | | | |
| | | ±5% | C4532C0G2J153J250KA | | | | |
| 22nF | 2012 | 1.25±0.20 | ±10% | | | | C2012C0G2A223K125AC |
| | | | ±5% | | | | C2012C0G2A223J125AC |
| | 3216 | 1.60±0.20 | ±10% | | | | C3216C0G2A223K160AA |
| | | | ±5% | | | | C3216C0G2A223J160AA |
| | 3216 | 1.60±0.30,-0.10 | ±10% | | | C3216C0G2E223K160AA | |
| | | | ±5% | | | C3216C0G2E223J160AA | |
| | 3225 | 1.60±0.20 | ±10% | | | C3225C0G2E223K160AA | C3225C0G2A223K160AA |
| | | | ±5% | | | C3225C0G2E223J160AA | C3225C0G2A223J160AA |
| | 3225 | 2.30±0.20 | ±10% | C3225C0G2J223K230AA | C3225C0G2W223K230AA | | |
| | | | ±5% | C3225C0G2J223J230AA | C3225C0G2W223J230AA | | |
| 4532 | 1.60±0.20 | ±10% | | | | C4532C0G2E223K160KA | |
| | | ±5% | | | | C4532C0G2E223J160KA | |
| 4532 | 3.20±0.30 | ±10% | C4532C0G2J223K320KA | | | | |
| | | ±5% | C4532C0G2J223J320KA | | | | |
| 33nF | 2012 | 1.25±0.20 | ±10% | | | | C2012C0G2A333K125AC |
| | | | ±5% | | | | C2012C0G2A333J125AC |
| | 3216 | 1.60±0.30,-0.10 | ±10% | | | | C3216C0G2A333K160AA |
| | | | ±5% | | | | C3216C0G2A333J160AA |
| | 3225 | 2.00±0.20 | ±10% | | | | C3225C0G2A333K200AA |
| | | | ±5% | | | | C3225C0G2A333J200AA |
| | 3225 | 2.30±0.20 | ±10% | | C3225C0G2E333K230AA | | |
| | | | ±5% | | | C3225C0G2E333J230AA | |
| | 3225 | 2.50±0.30 | ±10% | C3225C0G2J333K250AA | C3225C0G2W333K250AA | | |
| | | | ±5% | C3225C0G2J333J250AA | C3225C0G2W333J250AA | | |
| 4532 | 2.00±0.20 | ±10% | C4532C0G2J333K200KA | | | C4532C0G2E333K200KA | |
| | | ±5% | C4532C0G2J333J200KA | | | C4532C0G2E333J200KA | |
| 47nF | 3216 | 1.15±0.15 | ±10% | | | | C3216C0G2A473K115AC |
| | | | ±5% | | | | C3216C0G2A473J115AC |
| | 3225 | 2.30±0.20 | ±10% | | | | C3225C0G2A473K230AA |
| | | | ±5% | | | | C3225C0G2A473J230AA |
| | 3225 | 2.50±0.30 | ±10% | | | C3225C0G2E473K250AA | |
| | | | ±5% | | | C3225C0G2E473J250AA | |
| | 4532 | 2.00±0.20 | ±10% | | | | C4532C0G2A473K200KA |
| | | | ±5% | | | | C4532C0G2A473J200KA |
| | 4532 | 2.30±0.20 | ±10% | | C4532C0G2W473K230KA | | |
| | | | ±5% | | C4532C0G2W473J230KA | | |
| 4532 | 3.20±0.30 | ±10% | C4532C0G2J473K320KA | | | C4532C0G2E473K320KA | |
| | | ±5% | C4532C0G2J473J320KA | | | C4532C0G2E473J320KA | |
| 68nF | 3216 | 1.60±0.20 | ±10% | | | | C3216C0G2A683K160AC |
| | | | ±5% | | | | C3216C0G2A683J160AC |
| | 3225 | 2.30±0.20 | ±10% | | | | C3225C0G2A683K230AA |
| | | | ±5% | | | | C3225C0G2A683J230AA |
| | 4532 | 2.30±0.20 | ±10% | | | C4532C0G2E683K230KN | |
| | | | ±5% | | | C4532C0G2E683J230KN | |
| | 4532 | 2.50±0.30 | ±10% | | | | C4532C0G2A683K250KA |
| | | | ±5% | | | | C4532C0G2A683J250KA |
| | 5750 | 2.30±0.20 | ±10% | | C4532C0G2W683K320KA | | |
| | | | ±5% | | C4532C0G2W683J320KA | | |
| 5750 | 2.30±0.20 | ±10% | C5750C0G2J683K230KC | | | | |
| | | ±5% | C5750C0G2J683J230KC | | | | |

■ 灰色涂层的品名为不推荐用于新设计中的产品。

⚠ 为了能够更加正确、安全地使用产品，请务必索取能进一步确认详细特性、规格的采购规格书。
 记载内容可能因为产品改良等原因不经预告而更改，恕不另行通知。

电容范围表

温度特性: COG (-55 to +125°C、0±30ppm/°C)

| 电容 | 尺寸 | 厚度 (mm) | 电容容差 | 目录型号 | | | |
|-------|------|------------|------|---------------------|---------------------|---------------------|---------------------|
| | | | | 额定电压 Edc: 630V | 额定电压 Edc: 450V | 额定电压 Edc: 250V | 额定电压 Edc: 100V |
| 100nF | 3216 | 1.60±0.20 | ±10% | | | | C3216C0G2A104K160AC |
| | | | ±5% | | | | C3216C0G2A104J160AC |
| | 4532 | 3.20±0.30 | ±10% | | | C4532C0G2E104K320KN | C4532C0G2A104K320KA |
| | | | ±5% | | | C4532C0G2E104J320KN | C4532C0G2A104J320KA |
| | 5750 | 2.80±0.30 | ±10% | C5750C0G2J104K280KC | C5750C0G2W104K280KA | | |
| | | | ±5% | C5750C0G2J104J280KC | C5750C0G2W104J280KA | | |
| 150nF | 5750 | 2.30±0.20 | ±10% | | | C5750C0G2E154K230KN | C5750C0G2A154K230KA |
| | | | ±5% | | | C5750C0G2E154J230KN | C5750C0G2A154J230KA |

■灰色涂层的品名为不推荐用于新设计中的产品。

电容范围表

温度特性: CH (-25 to +85°C、0±60ppm/°C)

| 电容 | 尺寸 | 厚度 (mm) | 电容容差 | 目录型号 | | | |
|-------|-----------|------------|--------------------|--------------------|--------------------|--------------------|--------------------|
| | | | | 额定电压 Edc: 630V | 额定电压 Edc: 450V | 额定电压 Edc: 250V | 额定电压 Edc: 100V |
| 1pF | 1608 | 0.80±0.10 | ±0.25pF | | | | C1608CH2A010C080AA |
| 1.5pF | 1608 | 0.80±0.10 | ±0.25pF | | | | C1608CH2A1R5C080AA |
| 2pF | 1608 | 0.80±0.10 | ±0.25pF | | | | C1608CH2A020C080AA |
| 2.2pF | 1608 | 0.80±0.10 | ±0.25pF | | | | C1608CH2A2R2C080AA |
| 3pF | 1608 | 0.80±0.10 | ±0.25pF | | | | C1608CH2A030C080AA |
| 3.3pF | 1608 | 0.80±0.10 | ±0.25pF | | | | C1608CH2A3R3C080AA |
| 4pF | 1608 | 0.80±0.10 | ±0.25pF | | | | C1608CH2A040C080AA |
| 4.7pF | 1608 | 0.80±0.10 | ±0.25pF | | | | C1608CH2A4R7C080AA |
| 5pF | 1608 | 0.80±0.10 | ±0.25pF | | | | C1608CH2A050C080AA |
| 6pF | 1608 | 0.80±0.10 | ±0.50pF | | | | C1608CH2A060D080AA |
| 6.8pF | 1608 | 0.80±0.10 | ±0.50pF | | | | C1608CH2A6R8D080AA |
| 7pF | 1608 | 0.80±0.10 | ±0.50pF | | | | C1608CH2A070D080AA |
| 8pF | 1608 | 0.80±0.10 | ±0.50pF | | | | C1608CH2A080D080AA |
| 9pF | 1608 | 0.80±0.10 | ±0.50pF | | | | C1608CH2A090D080AA |
| 10pF | 1608 | 0.80±0.10 | ±0.50pF | | | | C1608CH2A100D080AA |
| 12pF | 1608 | 0.80±0.10 | ±5% | | | | C1608CH2A120J080AA |
| 15pF | 1608 | 0.80±0.10 | ±5% | | | | C1608CH2A150J080AA |
| 18pF | 1608 | 0.80±0.10 | ±5% | | | | C1608CH2A180J080AA |
| 22pF | 1608 | 0.80±0.10 | ±5% | | | | C1608CH2A220J080AA |
| 27pF | 1608 | 0.80±0.10 | ±5% | | | | C1608CH2A270J080AA |
| 33pF | 1608 | 0.80±0.10 | ±5% | | | | C1608CH2A330J080AA |
| 39pF | 1608 | 0.80±0.10 | ±5% | | | | C1608CH2A390J080AA |
| 47pF | 1608 | 0.80±0.10 | ±5% | | | | C1608CH2A470J080AA |
| 56pF | 1608 | 0.80±0.10 | ±5% | | | | C1608CH2A560J080AA |
| 68pF | 1608 | 0.80±0.10 | ±5% | | | | C1608CH2A680J080AA |
| 82pF | 1608 | 0.80±0.10 | ±5% | | | | C1608CH2A820J080AA |
| 100pF | 1005 | 0.50±0.05 | ±10% | | | | C1005CH2A101K050BA |
| | | | ±5% | | | | C1005CH2A101J050BA |
| | 1608 | 0.80±0.10 | ±10% | | | C1608CH2E101K080AA | C1608CH2A101K080AA |
| | | | ±5% | | | C1608CH2E101J080AA | C1608CH2A101J080AA |
| | 2012 | 0.60±0.15 | ±10% | | C2012CH2W101K060AA | | |
| | | ±5% | | C2012CH2W101J060AA | | | |
| 120pF | 3216 | 0.60±0.15 | ±10% | C3216CH2J101K060AA | | | |
| | | | ±5% | C3216CH2J101J060AA | | | |
| | 1005 | 0.50±0.05 | ±10% | | | | C1005CH2A121K050BA |
| | | | ±5% | | | | C1005CH2A121J050BA |
| | 1608 | 0.80±0.10 | ±10% | | | C1608CH2E121K080AA | C1608CH2A121K080AA |
| | | ±5% | | | C1608CH2E121J080AA | C1608CH2A121J080AA | |
| 2012 | 0.60±0.15 | ±10% | | C2012CH2W121K060AA | | | |
| | | ±5% | | C2012CH2W121J060AA | | | |
| 150pF | 3216 | 0.60±0.15 | ±10% | C3216CH2J121K060AA | | | |
| | | | ±5% | C3216CH2J121J060AA | | | |
| | 1005 | 0.50±0.05 | ±10% | | | | C1005CH2A151K050BA |
| | | | ±5% | | | | C1005CH2A151J050BA |
| | 1608 | 0.80±0.10 | ±10% | | | C1608CH2E151K080AA | C1608CH2A151K080AA |
| | | ±5% | | | C1608CH2E151J080AA | C1608CH2A151J080AA | |
| 2012 | 0.60±0.15 | ±10% | | C2012CH2W151K060AA | | | |
| | | ±5% | | C2012CH2W151J060AA | | | |
| 180pF | 3216 | 0.60±0.15 | ±10% | C3216CH2J151K060AA | | | |
| | | | ±5% | C3216CH2J151J060AA | | | |
| | 1005 | 0.50±0.05 | ±10% | | | | C1005CH2A181K050BA |
| | | | ±5% | | | | C1005CH2A181J050BA |
| | 1608 | 0.80±0.10 | ±10% | | | C1608CH2E181K080AA | C1608CH2A181K080AA |
| | | ±5% | | | C1608CH2E181J080AA | C1608CH2A181J080AA | |
| 2012 | 0.60±0.15 | ±10% | | C2012CH2W181K060AA | | | |
| | | ±5% | | C2012CH2W181J060AA | | | |
| 220pF | 3216 | 0.60±0.15 | ±10% | C3216CH2J181K060AA | | | |
| | | | ±5% | C3216CH2J181J060AA | | | |
| | 1005 | 0.50±0.05 | ±10% | | | | C1005CH2A221K050BA |
| | | | ±5% | | | | C1005CH2A221J050BA |
| | 1608 | 0.80±0.10 | ±10% | | | C1608CH2E221K080AA | C1608CH2A221K080AA |
| | | ±5% | | | C1608CH2E221J080AA | C1608CH2A221J080AA | |
| 2012 | 0.60±0.15 | ±10% | | C2012CH2W221K060AA | | | |
| | | ±5% | | C2012CH2W221J060AA | | | |
| 3216 | 0.60±0.15 | ±10% | C3216CH2J221K060AA | | | | |
| | | ±5% | C3216CH2J221J060AA | | | | |

■ 灰色涂层的品名为不推荐用于新设计中的产品。

⚠ 为了能够更加正确、安全地使用产品，请务必索取能进一步确认详细特性、规格的采购规格书。
 记载内容可能因为产品改良等原因不经预告而更改，恕不另行通知。

MULTILAYER CERAMIC CHIP CAPACITORS TDK

电容范围表

温度特性: CH (-25 to +85°C、0±60ppm/°C)

| 电容 | 尺寸 | 厚度 (mm) | 电容容差 | 目录型号 | | | |
|-------|-----------|-----------|--------------------|--------------------|--------------------|--------------------|--------------------|
| | | | | 额定电压 Edc: 630V | 额定电压 Edc: 450V | 额定电压 Edc: 250V | 额定电压 Edc: 100V |
| 270pF | 1005 | 0.50±0.05 | ±10% | | | | C1005CH2A271K050BA |
| | | | ±5% | | | | C1005CH2A271J050BA |
| | 1608 | 0.80±0.10 | ±10% | | | C1608CH2E271K080AA | C1608CH2A271K080AA |
| | | | ±5% | | C1608CH2E271J080AA | C1608CH2A271J080AA | |
| 2012 | 0.60±0.15 | ±10% | | C2012CH2W271K060AA | | | |
| | | ±5% | | C2012CH2W271J060AA | | | |
| 3216 | 0.60±0.15 | ±10% | C3216CH2J271K060AA | | | | |
| | | ±5% | C3216CH2J271J060AA | | | | |
| 330pF | 1005 | 0.50±0.05 | ±10% | | | | C1005CH2A331K050BA |
| | | | ±5% | | | | C1005CH2A331J050BA |
| | 1608 | 0.80±0.10 | ±10% | | | C1608CH2E331K080AA | C1608CH2A331K080AA |
| | | | ±5% | | C1608CH2E331J080AA | C1608CH2A331J080AA | |
| 2012 | 0.60±0.15 | ±10% | | C2012CH2W331K060AA | | | |
| | | ±5% | | C2012CH2W331J060AA | | | |
| 3216 | 0.60±0.15 | ±10% | C3216CH2J331K060AA | | | | |
| | | ±5% | C3216CH2J331J060AA | | | | |
| 390pF | 1005 | 0.50±0.05 | ±10% | | | | C1005CH2A391K050BA |
| | | | ±5% | | | | C1005CH2A391J050BA |
| | 1608 | 0.80±0.10 | ±10% | | | C1608CH2E391K080AA | C1608CH2A391K080AA |
| | | | ±5% | | C1608CH2E391J080AA | C1608CH2A391J080AA | |
| 2012 | 0.60±0.15 | ±10% | | C2012CH2W391K060AA | | | |
| | | ±5% | | C2012CH2W391J060AA | | | |
| 3216 | 0.60±0.15 | ±10% | C3216CH2J391K060AA | | | | |
| | | ±5% | C3216CH2J391J060AA | | | | |
| 470pF | 1005 | 0.50±0.05 | ±10% | | | | C1005CH2A471K050BA |
| | | | ±5% | | | | C1005CH2A471J050BA |
| | 1608 | 0.80±0.10 | ±10% | | | C1608CH2E471K080AA | C1608CH2A471K080AA |
| | | | ±5% | | C1608CH2E471J080AA | C1608CH2A471J080AA | |
| 2012 | 0.60±0.15 | ±10% | | C2012CH2W471K060AA | | | |
| | | ±5% | | C2012CH2W471J060AA | | | |
| 3216 | 0.85±0.15 | ±10% | C3216CH2J471K085AA | | | | |
| | | ±5% | C3216CH2J471J085AA | | | | |
| 560pF | 1005 | 0.50±0.05 | ±10% | | | | C1005CH2A561K050BC |
| | | | ±5% | | | | C1005CH2A561J050BC |
| | 1608 | 0.80±0.10 | ±10% | | | C1608CH2E561K080AA | C1608CH2A561K080AA |
| | | | ±5% | | C1608CH2E561J080AA | C1608CH2A561J080AA | |
| 2012 | 0.60±0.15 | ±10% | | C2012CH2W561K060AA | | | |
| | | ±5% | | C2012CH2W561J060AA | | | |
| 3216 | 0.85±0.15 | ±10% | C3216CH2J561K085AA | | | | |
| | | ±5% | C3216CH2J561J085AA | | | | |
| 680pF | 1005 | 0.50±0.05 | ±10% | | | | C1005CH2A681K050BC |
| | | | ±5% | | | | C1005CH2A681J050BC |
| | 1608 | 0.80±0.10 | ±10% | | | C1608CH2E681K080AA | C1608CH2A681K080AA |
| | | | ±5% | | C1608CH2E681J080AA | C1608CH2A681J080AA | |
| 2012 | 0.60±0.15 | ±10% | | C2012CH2W681K060AA | | | |
| | | ±5% | | C2012CH2W681J060AA | | | |
| 3216 | 0.85±0.15 | ±10% | C3216CH2J681K085AA | | | | |
| | | ±5% | C3216CH2J681J085AA | | | | |
| 820pF | 1005 | 0.50±0.05 | ±10% | | | | C1005CH2A821K050BC |
| | | | ±5% | | | | C1005CH2A821J050BC |
| | 1608 | 0.80±0.10 | ±10% | | | C1608CH2E821K080AA | C1608CH2A821K080AA |
| | | | ±5% | | C1608CH2E821J080AA | C1608CH2A821J080AA | |
| 2012 | 0.60±0.15 | ±10% | | C2012CH2W821K060AA | | | |
| | | ±5% | | C2012CH2W821J060AA | | | |
| 3216 | 0.85±0.15 | ±10% | C3216CH2J821K085AA | | | | |
| | | ±5% | C3216CH2J821J085AA | | | | |
| 1nF | 1005 | 0.50±0.05 | ±10% | | | | C1005CH2A102K050BC |
| | | | ±5% | | | | C1005CH2A102J050BC |
| | 1608 | 0.80±0.10 | ±10% | | | C1608CH2E102K080AA | C1608CH2A102K080AA |
| | | | ±5% | | C1608CH2E102J080AA | C1608CH2A102J080AA | |
| 2012 | 0.60±0.15 | ±10% | | C2012CH2W102K060AA | | | |
| | | ±5% | | C2012CH2W102J060AA | | | |
| 3216 | 0.85±0.15 | ±10% | C3216CH2J102K085AA | | | | |
| | | ±5% | C3216CH2J102J085AA | | | | |

■ 灰色涂层的品名为不推荐用于新设计中的产品。

▲ 为了能够更加正确、安全地使用产品，请务必索取能进一步确认详细特性、规格的采购规格书。
 记载内容可能因为产品改良等原因不经预告而更改，恕不另行通知。

电容范围表

温度特性: CH (-25 to +85°C、0±60ppm/°C)

| 电容 | 尺寸 | 厚度 (mm) | 电容容差 | 目录型号 | | | |
|-------|-----------|-----------------|------|--------------------|--------------------|--------------------|--------------------|
| | | | | 额定电压 Edc: 630V | 额定电压 Edc: 450V | 额定电压 Edc: 250V | 额定电压 Edc: 100V |
| 1.2nF | 1608 | 0.80±0.10 | ±10% | | | C1608CH2E122K080AA | C1608CH2A122K080AA |
| | | | ±5% | | | C1608CH2E122J080AA | C1608CH2A122J080AA |
| | 2012 | 0.60±0.15 | ±10% | | C2012CH2W122K060AA | | |
| | | | ±5% | | C2012CH2W122J060AA | | C2012CH2A122J060AA |
| | 3216 | 0.85±0.15 | ±10% | | | C2012CH2E122K085AA | |
| | | | ±5% | | | C2012CH2E122J085AA | |
| | | | ±10% | C3216CH2J122K085AA | | | |
| | | | ±5% | C3216CH2J122J085AA | | | |
| 1.5nF | 1608 | 0.80±0.10 | ±10% | | | C1608CH2E152K080AA | C1608CH2A152K080AA |
| | | | ±5% | | | C1608CH2E152J080AA | C1608CH2A152J080AA |
| | 2012 | 0.60±0.15 | ±10% | | | | C2012CH2A152K060AA |
| | | | ±5% | | | | C2012CH2A152J060AA |
| | 3216 | 1.15±0.15 | ±10% | | C3216CH2J152K115AA | | |
| | | | ±5% | | C3216CH2J152J115AA | | |
| | | | ±10% | | | | |
| | | | ±5% | | | | |
| 1.8nF | 1608 | 0.80±0.10 | ±10% | | | C1608CH2E182K080AA | C1608CH2A182K080AA |
| | | | ±5% | | | C1608CH2E182J080AA | C1608CH2A182J080AA |
| | 2012 | 0.85±0.15 | ±10% | | C2012CH2W182K085AA | | C2012CH2A182K085AA |
| | | | ±5% | | C2012CH2W182J085AA | | C2012CH2A182J085AA |
| | 3216 | 1.15±0.15 | ±10% | | | C2012CH2E182K125AA | |
| | | | ±5% | | | C2012CH2E182J125AA | |
| | | | ±10% | C3216CH2J182K115AA | | | |
| | | | ±5% | C3216CH2J182J115AA | | | |
| 2.2nF | 1608 | 0.80±0.10 | ±10% | | | | C1608CH2A222K080AA |
| | | | ±5% | | | | C1608CH2A222J080AA |
| | 2012 | 0.85±0.15 | ±10% | | C2012CH2W222K085AA | | C2012CH2A222K085AA |
| | | | ±5% | | C2012CH2W222J085AA | | C2012CH2A222J085AA |
| | 3216 | 1.15±0.15 | ±10% | | | C2012CH2E222K125AA | |
| | | | ±5% | | | C2012CH2E222J125AA | |
| | | | ±10% | C3216CH2J222K115AA | | | |
| | | | ±5% | C3216CH2J222J115AA | | | |
| 2.7nF | 1608 | 0.80±0.15,-0.10 | ±10% | | | | C1608CH2A272K080AA |
| | | | ±5% | | | | C1608CH2A272J080AA |
| | 2012 | 1.25±0.20 | ±10% | | C2012CH2W272K125AA | C2012CH2E272K125AA | C2012CH2A272K125AA |
| | | | ±5% | | C2012CH2W272J125AA | C2012CH2E272J125AA | C2012CH2A272J125AA |
| | 3216 | 1.60±0.20 | ±10% | | C3216CH2J272K160AA | | |
| | | | ±5% | | C3216CH2J272J160AA | | |
| | | | ±10% | | | | |
| | | | ±5% | | | | |
| 3.3nF | 1608 | 0.80±0.15,-0.10 | ±10% | | | | C1608CH2A332K080AA |
| | | | ±5% | | | | C1608CH2A332J080AA |
| | 2012 | 0.85±0.15 | ±10% | | | C2012CH2E332K085AA | |
| | | | ±5% | | | C2012CH2E332J085AA | |
| | 3216 | 0.85±0.15 | ±10% | | C2012CH2W332K125AA | | C2012CH2A332K125AA |
| | | | ±5% | | C2012CH2W332J125AA | | C2012CH2A332J125AA |
| 3216 | 1.60±0.20 | ±10% | | | C3216CH2E332K085AA | | |
| | | ±5% | | | C3216CH2E332J085AA | | |
| | | | ±10% | C3216CH2J332K160AA | | | |
| | | | ±5% | C3216CH2J332J160AA | | | |
| 3.9nF | 1608 | 0.80±0.10 | ±10% | | | | C1608CH2A392K080AC |
| | | | ±5% | | | | C1608CH2A392J080AC |
| | 2012 | 1.25±0.20 | ±10% | | C2012CH2W392K125AA | C2012CH2E392K125AA | C2012CH2A392K125AA |
| | | | ±5% | | C2012CH2W392J125AA | C2012CH2E392J125AA | C2012CH2A392J125AA |
| | 3216 | 0.60±0.15 | ±10% | | | | C3216CH2A392K060AA |
| | | | ±5% | | | | C3216CH2A392J060AA |
| 3216 | 0.85±0.15 | ±10% | | C3216CH2J392K085AA | | | |
| | | ±5% | | C3216CH2J392J085AA | | | |
| | | | ±10% | | | | |
| | | | ±5% | | | | |
| | | | ±10% | | C3216CH2E392K115AA | | |
| | | | ±5% | | C3216CH2E392J115AA | | |
| | | | ±10% | C3225CH2J392K125AA | | | |
| | | | ±5% | C3225CH2J392J125AA | | | |

■ 灰色涂层的品名为不推荐用于新设计中的产品。

⚠ 为了能够更加正确、安全地使用产品，请务必索取能进一步确认详细特性、规格的采购规格书。
 记载内容可能因为产品改良等原因不经预告而更改，恕不另行通知。

电容范围表

温度特性: CH (-25 to +85°C、0±60ppm/°C)

| 电容 | 尺寸 | 厚度 (mm) | 电容容差 | 目录型号 | | | |
|-------|-----------|------------|--------------------|--------------------|--------------------|--------------------|--------------------|
| | | | | 额定电压 Edc: 630V | 额定电压 Edc: 450V | 额定电压 Edc: 250V | 额定电压 Edc: 100V |
| 4.7nF | 1608 | 0.80±0.10 | ±10% | | | | C1608CH2A472K080AC |
| | | | ±5% | | | C1608CH2A472J080AC | |
| | 2012 | 1.25±0.20 | ±10% | | C2012CH2W472K125AA | C2012CH2E472K125AA | C2012CH2A472K125AA |
| | | | ±5% | | C2012CH2W472J125AA | C2012CH2E472J125AA | C2012CH2A472J125AA |
| | 3216 | 0.85±0.15 | ±10% | C3216CH2J472K085AA | | | C3216CH2A472K085AA |
| | | | ±5% | C3216CH2J472J085AA | | | C3216CH2A472J085AA |
| | 3216 | 1.15±0.15 | ±10% | | | C3216CH2E472K115AA | |
| | | | ±5% | | | C3216CH2E472J115AA | |
| | 3225 | 1.60±0.20 | ±10% | C3225CH2J472K160AA | | | |
| | | | ±5% | C3225CH2J472J160AA | | | |
| 5.6nF | 1608 | 0.80±0.10 | ±10% | | | | C1608CH2A562K080AC |
| | | | ±5% | | | | C1608CH2A562J080AC |
| | 2012 | 1.25±0.20 | ±10% | | C2012CH2W562K125AA | C2012CH2E562K125AA | C2012CH2A562K125AA |
| | | | ±5% | | C2012CH2W562J125AA | C2012CH2E562J125AA | C2012CH2A562J125AA |
| | 3216 | 0.85±0.15 | ±10% | | | | C3216CH2A562K085AA |
| | | | ±5% | | | | C3216CH2A562J085AA |
| | 3216 | 1.15±0.15 | ±10% | C3216CH2J562K115AA | | C3216CH2E562K115AA | |
| | | | ±5% | C3216CH2J562J115AA | | C3216CH2E562J115AA | |
| | 3225 | 1.60±0.20 | ±10% | C3225CH2J562K160AA | | | |
| | | | ±5% | C3225CH2J562J160AA | | | |
| 6.8nF | 1608 | 0.80±0.10 | ±10% | | | | C1608CH2A682K080AC |
| | | | ±5% | | | | C1608CH2A682J080AC |
| | 2012 | 1.25±0.20 | ±10% | | | C2012CH2E682K125AA | C2012CH2A682K125AA |
| | | | ±5% | | | C2012CH2E682J125AA | C2012CH2A682J125AA |
| | 3216 | 1.15±0.15 | ±10% | C3216CH2J682K115AA | C3216CH2W682K115AA | | C3216CH2A682K115AA |
| | | | ±5% | C3216CH2J682J115AA | C3216CH2W682J115AA | | C3216CH2A682J115AA |
| | 3216 | 1.60±0.20 | ±10% | | | C3216CH2E682K160AA | |
| | | | ±5% | | | C3216CH2E682J160AA | |
| | 3225 | 2.00±0.20 | ±10% | C3225CH2J682K200AA | | | |
| | | | ±5% | C3225CH2J682J200AA | | | |
| 8.2nF | 1608 | 0.80±0.10 | ±10% | | | | C1608CH2A822K080AC |
| | | | ±5% | | | | C1608CH2A822J080AC |
| | 2012 | 1.25±0.20 | ±10% | | | C2012CH2E822K125AA | C2012CH2A822K125AA |
| | | | ±5% | | | C2012CH2E822J125AA | C2012CH2A822J125AA |
| | 3216 | 1.15±0.15 | ±10% | | C3216CH2W822K115AA | | C3216CH2A822K115AA |
| | | | ±5% | | C3216CH2W822J115AA | | C3216CH2A822J115AA |
| | 3216 | 1.60±0.20 | ±10% | C3216CH2J822K160AA | | C3216CH2E822K160AA | |
| | | | ±5% | C3216CH2J822J160AA | | C3216CH2E822J160AA | |
| | 3225 | 1.25±0.20 | ±10% | C3225CH2J822K125AA | | | |
| | | | ±5% | C3225CH2J822J125AA | | | |
| 4532 | 1.60±0.20 | ±10% | C4532CH2J822K160KA | | | | |
| | | ±5% | C4532CH2J822J160KA | | | | |
| 10nF | 1608 | 0.80±0.10 | ±10% | | | | C1608CH2A103K080AC |
| | | | ±5% | | | | C1608CH2A103J080AC |
| | 2012 | 1.25±0.20 | ±10% | | | C2012CH2E103K125AA | C2012CH2A103K125AA |
| | | | ±5% | | | C2012CH2E103J125AA | C2012CH2A103J125AA |
| | 3216 | 1.15±0.15 | ±10% | | C3216CH2W822K115AA | | C3216CH2A822K115AA |
| | | | ±5% | | C3216CH2W822J115AA | | C3216CH2A822J115AA |
| | 3216 | 1.60±0.20 | ±10% | C3216CH2J103K160AA | C3216CH2W103K160AA | | |
| | | | ±5% | C3216CH2J103J160AA | C3216CH2W103J160AA | | |
| | 3225 | 1.25±0.20 | ±10% | C3225CH2J103K125AA | | | |
| | | | ±5% | C3225CH2J103J125AA | | | |
| 3225 | 1.60±0.20 | ±10% | | | C3225CH2E103K160AA | | |
| | | ±5% | | | C3225CH2E103J160AA | | |
| 4532 | 1.60±0.20 | ±10% | C4532CH2J103K160KA | | | | |
| | | ±5% | C4532CH2J103J160KA | | | | |

■ 灰色涂层的品名为不推荐用于新设计中的产品。

⚠ 为了能够更加正确、安全地使用产品，请务必索取能进一步确认详细特性、规格的采购规格书。
 记载内容可能因为产品改良等原因不经预告而更改，恕不另行通知。

MULTILAYER CERAMIC CHIP CAPACITORS



电容范围表

温度特性: CH (-25 to +85°C、0±60ppm/°C)

| 电容 | 尺寸 | 厚度 (mm) | 电容容差 | 目录型号 | | | |
|------|-----------|-----------------|--------------------|--------------------|--------------------|--------------------|--------------------|
| | | | | 额定电压 Edc: 630V | 额定电压 Edc: 450V | 额定电压 Edc: 250V | 额定电压 Edc: 100V |
| 15nF | 2012 | 0.85±0.15 | ±10% | | | | C2012CH2A153K085AC |
| | | | ±5% | | | | C2012CH2A153J085AC |
| | 3216 | 1.15±0.15 | ±10% | | | | C3216CH2A153K115AA |
| | | | ±5% | | | | C3216CH2A153J115AA |
| | 3216 | 1.60±0.20 | ±10% | | | C3216CH2E153K160AA | |
| | | | ±5% | | | C3216CH2E153J160AA | |
| | 3216 | 1.60+0.30,-0.10 | ±10% | | C3216CH2W153K160AA | | |
| | | | ±5% | | C3216CH2W153J160AA | | |
| | 3225 | 1.25±0.20 | ±10% | | | | C3225CH2A153K125AA |
| | | | ±5% | | | | C3225CH2A153J125AA |
| 3225 | 1.60±0.20 | ±10% | C3225CH2J153K160AA | | | | |
| | | ±5% | C3225CH2J153J160AA | | | | |
| 4532 | 2.00±0.20 | ±10% | | | C3225CH2E153K200AA | | |
| | | ±5% | | | C3225CH2E153J200AA | | |
| 4532 | 2.50±0.30 | ±10% | C4532CH2J153K250KA | | | | |
| | | ±5% | C4532CH2J153J250KA | | | | |
| 22nF | 2012 | 1.25±0.20 | ±10% | | | | C2012CH2A223K125AC |
| | | | ±5% | | | | C2012CH2A223J125AC |
| | 3216 | 1.60±0.20 | ±10% | | | | C3216CH2A223K160AA |
| | | | ±5% | | | | C3216CH2A223J160AA |
| | 3216 | 1.60+0.30,-0.10 | ±10% | | | C3216CH2E223K160AA | |
| | | | ±5% | | | C3216CH2E223J160AA | |
| | 3225 | 1.60±0.20 | ±10% | | | C3225CH2E223K160AA | C3225CH2A223K160AA |
| | | | ±5% | | | C3225CH2E223J160AA | C3225CH2A223J160AA |
| | 3225 | 2.30±0.20 | ±10% | C3225CH2J223K230AA | C3225CH2W223K230AA | | |
| | | | ±5% | C3225CH2J223J230AA | C3225CH2W223J230AA | | |
| 4532 | 1.60±0.20 | ±10% | | | C4532CH2E223K160KA | | |
| | | ±5% | | | C4532CH2E223J160KA | | |
| 4532 | 3.20±0.30 | ±10% | C4532CH2J223K320KA | | | | |
| | | ±5% | C4532CH2J223J320KA | | | | |
| 33nF | 2012 | 1.25±0.20 | ±10% | | | | C2012CH2A333K125AC |
| | | | ±5% | | | | C2012CH2A333J125AC |
| | 3216 | 1.60+0.30,-0.10 | ±10% | | | | C3216CH2A333K160AA |
| | | | ±5% | | | | C3216CH2A333J160AA |
| | 3225 | 2.00±0.20 | ±10% | | | | C3225CH2A333K200AA |
| | | | ±5% | | | | C3225CH2A333J200AA |
| | 3225 | 2.30±0.20 | ±10% | | | C3225CH2E333K230AA | |
| | | | ±5% | | | C3225CH2E333J230AA | |
| | 3225 | 2.50±0.30 | ±10% | C3225CH2J333K250AA | C3225CH2W333K250AA | | |
| | | | ±5% | C3225CH2J333J250AA | C3225CH2W333J250AA | | |
| 4532 | 2.00±0.20 | ±10% | C4532CH2J333J200KA | | | | |
| | | ±5% | C4532CH2E333J200KA | | | | |
| 47nF | 3216 | 1.15±0.15 | ±10% | | | | C3216CH2A473K115AC |
| | | | ±5% | | | | C3216CH2A473J115AC |
| | 3225 | 2.30±0.20 | ±10% | | | | C3225CH2A473K230AA |
| | | | ±5% | | | | C3225CH2A473J230AA |
| | 3225 | 2.50±0.30 | ±10% | | | C3225CH2E473K250AA | |
| | | | ±5% | | | C3225CH2E473J250AA | |
| | 4532 | 2.00±0.20 | ±10% | | | | C4532CH2A473K200KA |
| | | | ±5% | | | | C4532CH2A473J200KA |
| | 4532 | 2.30±0.20 | ±10% | | C4532CH2W473K230KA | | |
| | | | ±5% | | C4532CH2W473J230KA | | |
| 4532 | 3.20±0.30 | ±10% | C4532CH2J473K320KA | | C4532CH2E473K320KA | | |
| | | ±5% | C4532CH2J473J320KA | | C4532CH2E473J320KA | | |
| 68nF | 3216 | 1.60±0.20 | ±10% | | | | C3216CH2A683K160AC |
| | | | ±5% | | | | C3216CH2A683J160AC |
| | 3225 | 2.30±0.20 | ±10% | | | | C3225CH2A683K230AA |
| | | | ±5% | | | | C3225CH2A683J230AA |
| | 4532 | 2.30±0.20 | ±10% | | | C4532CH2E683K230KN | |
| | | | ±5% | | | C4532CH2E683J230KN | |
| | 4532 | 2.50±0.30 | ±10% | | | | C4532CH2A683K250KA |
| | | | ±5% | | | | C4532CH2A683J250KA |
| | 4532 | 3.20±0.30 | ±10% | | C4532CH2W683K320KA | | |
| | | | ±5% | | C4532CH2W683J320KA | | |
| 5750 | 2.30±0.20 | ±10% | C5750CH2J683K230KC | | | | |
| | | ±5% | C5750CH2J683J230KC | | | | |

■灰色涂层的品名为不推荐用于新设计中的产品。

⚠ 为了能够更加正确、安全地使用产品，请务必索取能进一步确认详细特性、规格的采购规格书。
记载内容可能因为产品改良等原因不经预告而更改，恕不另行通知。

电容范围表

温度特性: CH (-25 to +85°C、0±60ppm/°C)

| 电容 | 尺寸 | 厚度 (mm) | 电容容差 | 目录型号 | | | |
|-------|------|------------|------|--------------------|--------------------|--------------------|--------------------|
| | | | | 额定电压 Edc: 630V | 额定电压 Edc: 450V | 额定电压 Edc: 250V | 额定电压 Edc: 100V |
| 100nF | 3216 | 1.60±0.20 | ±10% | | | | C3216CH2A104K160AC |
| | | | ±5% | | | | C3216CH2A104J160AC |
| | 4532 | 3.20±0.30 | ±10% | | | C4532CH2E104K320KN | C4532CH2A104K320KA |
| | | | ±5% | | | C4532CH2E104J320KN | C4532CH2A104J320KA |
| | 5750 | 2.80±0.30 | ±10% | C5750CH2J104K280KC | C5750CH2W104K280KA | | |
| | | | ±5% | C5750CH2J104J280KC | C5750CH2W104J280KA | | |
| 150nF | 5750 | 2.30±0.20 | ±10% | | | C5750CH2E154K230KN | C5750CH2A154K230KA |
| | | | ±5% | | | C5750CH2E154J230KN | C5750CH2A154J230KA |

■灰色涂层的品名为不推荐用于新设计中的产品。

电容范围表

温度特性: JB (-25 to +85°C、±10%)

| 电容 | 尺寸 | 厚度 (mm) | 电容容差 | 目录型号 | | |
|-------|-----------|------------|--------------------|--------------------|--------------------|--------------------|
| | | | | 额定电压 Edc: 630V | 额定电压 Edc: 250V | 额定电压 Edc: 100V |
| 1nF | 1608 | 0.80±0.10 | ±10% | | | C1608JB2A102K080AA |
| | | | ±20% | | | C1608JB2A102M080AA |
| | 2012 | 0.85±0.15 | ±10% | | C2012JB2E102K085AA | C2012JB2A102K085AA |
| | | | ±20% | | C2012JB2E102M085AA | C2012JB2A102M085AA |
| 3216 | 1.15±0.15 | ±10% | C3216JB2J102K115AA | | | |
| | | ±20% | C3216JB2J102M115AA | | | |
| 1.5nF | 1608 | 0.80±0.10 | ±10% | | | C1608JB2A152K080AA |
| | | | ±20% | | | C1608JB2A152M080AA |
| | 2012 | 0.85±0.15 | ±10% | | C2012JB2E152K085AA | C2012JB2A152K085AA |
| | | | ±20% | | C2012JB2E152M085AA | C2012JB2A152M085AA |
| 3216 | 1.15±0.15 | ±10% | C3216JB2J152K115AA | | | |
| | | ±20% | C3216JB2J152M115AA | | | |
| 2.2nF | 1608 | 0.80±0.10 | ±10% | | | C1608JB2A222K080AA |
| | | | ±20% | | | C1608JB2A222M080AA |
| | 2012 | 0.85±0.15 | ±10% | | C2012JB2E222K085AA | C2012JB2A222K085AA |
| | | | ±20% | | C2012JB2E222M085AA | C2012JB2A222M085AA |
| 3216 | 1.15±0.15 | ±10% | C3216JB2J222K115AA | | | |
| | | ±20% | C3216JB2J222M115AA | | | |
| 3.3nF | 1608 | 0.80±0.10 | ±10% | | | C1608JB2A332K080AA |
| | | | ±20% | | | C1608JB2A332M080AA |
| | 2012 | 0.85±0.15 | ±10% | | C2012JB2E332K085AA | C2012JB2A332K085AA |
| | | | ±20% | | C2012JB2E332M085AA | C2012JB2A332M085AA |
| 3216 | 1.15±0.15 | ±10% | C3216JB2J332K115AA | | | |
| | | ±20% | C3216JB2J332M115AA | | | |
| 4.7nF | 1608 | 0.80±0.10 | ±10% | | | C1608JB2A472K080AA |
| | | | ±20% | | | C1608JB2A472M080AA |
| | 2012 | 0.85±0.15 | ±10% | | C2012JB2E472K085AA | C2012JB2A472K085AA |
| | | | ±20% | | C2012JB2E472M085AA | C2012JB2A472M085AA |
| 3216 | 1.15±0.15 | ±10% | C3216JB2J472K115AA | | | |
| | | ±20% | C3216JB2J472M115AA | | | |
| 6.8nF | 1608 | 0.80±0.10 | ±10% | | | C1608JB2A682K080AA |
| | | | ±20% | | | C1608JB2A682M080AA |
| | 2012 | 0.85±0.15 | ±10% | | | C2012JB2A682K085AA |
| | | | ±20% | | | C2012JB2A682M085AA |
| 3216 | 1.15±0.15 | ±10% | | C2012JB2E682K125AA | | |
| | | ±20% | | C2012JB2E682M125AA | | |
| 10nF | 1608 | 0.80±0.10 | ±10% | | | C1608JB2A103K080AA |
| | | | ±20% | | | C1608JB2A103M080AA |
| | 2012 | 0.85±0.15 | ±10% | | | C2012JB2A103K085AA |
| | | | ±20% | | | C2012JB2A103M085AA |
| 3216 | 1.15±0.15 | ±10% | C3216JB2J103K115AA | | | |
| | | ±20% | C3216JB2J103M115AA | | | |
| 15nF | 1608 | 0.80±0.10 | ±10% | | | C1608JB2A153K080AA |
| | | | ±20% | | | C1608JB2A153M080AA |
| | 2012 | 1.25±0.20 | ±10% | | C2012JB2E153K125AA | C2012JB2A153K125AA |
| | | | ±20% | | C2012JB2E153M125AA | C2012JB2A153M125AA |
| 3216 | 1.15±0.15 | ±10% | | C3216JB2E153K115AA | | |
| | | ±20% | | C3216JB2E153M115AA | | |
| 3216 | 1.30±0.20 | ±10% | C3216JB2J153K130AA | | | |
| | | ±20% | C3216JB2J153M130AA | | | |
| 22nF | 1608 | 0.80±0.10 | ±10% | | | C1608JB2A223K080AA |
| | | | ±20% | | | C1608JB2A223M080AA |
| | 2012 | 1.25±0.20 | ±10% | | C2012JB2E223K125AA | C2012JB2A223K125AA |
| | | | ±20% | | C2012JB2E223M125AA | C2012JB2A223M125AA |
| 3216 | 1.15±0.15 | ±10% | | C3216JB2E223K115AA | | |
| | | ±20% | | C3216JB2E223M115AA | | |
| 3216 | 1.30±0.20 | ±10% | C3216JB2J223K130AA | | | |
| | | ±20% | C3216JB2J223M130AA | | | |
| 33nF | 2012 | 1.25±0.20 | ±10% | | | C2012JB2A333K125AA |
| | | | ±20% | | | C2012JB2A333M125AA |
| | 3216 | 1.15±0.15 | ±10% | | | C3216JB2A333K115AA |
| | | | ±20% | | | C3216JB2A333M115AA |
| 3216 | 1.60±0.20 | ±10% | C3216JB2J333K160AA | C3216JB2E333K160AA | | |
| | | ±20% | C3216JB2J333M160AA | C3216JB2E333M160AA | | |

■ 灰色涂层的品名为不推荐用于新设计中的产品。

⚠ 为了能够更加正确、安全地使用产品，请务必索取能进一步确认详细特性、规格的采购规格书。
记载内容可能因为产品改良等原因不经预告而更改，恕不另行通知。

电容范围表

温度特性: JB (-25 to +85°C、±10%)

| 电容 | 尺寸 | 厚度 (mm) | 电容容差 | 目录型号 | | |
|-------|-----------|------------|--------------------|--------------------|--------------------|--------------------|
| | | | | 额定电压 Edc: 630V | 额定电压 Edc: 250V | 额定电压 Edc: 100V |
| 47nF | 2012 | 1.25±0.20 | ±10% | | | C2012JB2A473K125AA |
| | | | ±20% | | | C2012JB2A473M125AA |
| | 3216 | 1.15±0.15 | ±10% | | | C3216JB2A473K115AA |
| | | | ±20% | | | C3216JB2A473M115AA |
| | | 1.60±0.20 | ±10% | | C3216JB2E473K160AA | |
| | | | ±20% | | C3216JB2E473M160AA | |
| 3225 | 2.00±0.20 | ±10% | C3225JB2J473K200AA | | | |
| | | ±20% | C3225JB2J473M200AA | | | |
| 68nF | 2012 | 0.85±0.15 | ±10% | | | C2012JB2A683K085AA |
| | | | ±20% | | | C2012JB2A683M085AA |
| | 3216 | 1.60±0.20 | ±10% | | C3216JB2E683K160AA | C3216JB2A683K160AA |
| | | | ±20% | | C3216JB2E683M160AA | C3216JB2A683M160AA |
| | 3225 | 2.00±0.20 | ±10% | C3225JB2J683K200AA | | |
| | | | ±20% | C3225JB2J683M200AA | | |
| 4532 | 1.60±0.20 | ±10% | C4532JB2J683K160KA | | | |
| | | ±20% | C4532JB2J683M160KA | | | |
| 100nF | 2012 | 1.25±0.20 | ±10% | | | C2012JB2A104K125AA |
| | | | ±20% | | | C2012JB2A104M125AA |
| | 3216 | 1.60±0.20 | ±10% | | C3216JB2E104K160AA | C3216JB2A104K160AA |
| | | | ±20% | | C3216JB2E104M160AA | C3216JB2A104M160AA |
| | 3225 | 2.00±0.20 | ±10% | | C3225JB2E104K200AA | |
| | | | ±20% | | C3225JB2E104M200AA | |
| 4532 | 2.30±0.20 | ±10% | C4532JB2J104K230KA | | | |
| | | ±20% | C4532JB2J104M230KA | | | |
| 150nF | 3216 | 1.60±0.20 | ±10% | | | C3216JB2A154K160AA |
| | | | ±20% | | | C3216JB2A154M160AA |
| | 3225 | 2.00±0.20 | ±10% | | C3225JB2E154K200AA | |
| | | | ±20% | | C3225JB2E154M200AA | |
| | 4532 | 1.60±0.20 | ±10% | | C4532JB2E154K160KA | |
| | | | ±20% | | C4532JB2E154M160KA | |
| 5750 | 1.60±0.20 | ±10% | C5750JB2J154K160KA | | | |
| | | ±20% | C5750JB2J154M160KA | | | |
| 220nF | 3216 | 1.15±0.15 | ±10% | | | C3216JB2A224K115AA |
| | | | ±20% | | | C3216JB2A224M115AA |
| | 3225 | 2.00±0.20 | ±10% | | C3225JB2E224K200AA | |
| | | | ±20% | | C3225JB2E224M200AA | |
| | 4532 | 2.30±0.20 | ±10% | | C4532JB2E224K230KA | |
| | | | ±20% | | C4532JB2E224M230KA | |
| 5750 | 2.30±0.20 | ±10% | C5750JB2J224K230KA | | | |
| | | ±20% | C5750JB2J224M230KA | | | |
| 330nF | 3216 | 1.30±0.20 | ±10% | | | C3216JB2A334K130AA |
| | | | ±20% | | | C3216JB2A334M130AA |
| | 3225 | 2.00±0.20 | ±10% | | | C3225JB2A334K200AA |
| | | | ±20% | | | C3225JB2A334M200AA |
| | 4532 | 2.30±0.20 | ±10% | | C4532JB2E334K230KA | |
| | | | ±20% | | C4532JB2E334M230KA | |
| 5750 | 1.60±0.20 | ±10% | | C5750JB2E334K160KA | | |
| | | ±20% | | C5750JB2E334M160KA | | |
| 470nF | 3216 | 1.60±0.20 | ±10% | | | C3216JB2A474K160AA |
| | | | ±20% | | | C3216JB2A474M160AA |
| | 3225 | 2.00±0.20 | ±10% | | | C3225JB2A474K200AA |
| | | | ±20% | | | C3225JB2A474M200AA |
| | 4532 | 2.30±0.20 | ±10% | | C4532JB2E474K230KA | |
| | | | ±20% | | C4532JB2E474M230KA | |
| 5750 | 2.30±0.20 | ±10% | | C5750JB2E474K230KA | | |
| | | ±20% | | C5750JB2E474M230KA | | |
| 680nF | 3216 | 1.60±0.20 | ±10% | | | C3216JB2A684K160AA |
| | | | ±20% | | | C3216JB2A684M160AA |
| | 3225 | 1.60±0.20 | ±10% | | | C3225JB2A684K160AA |
| | | | ±20% | | | C3225JB2A684M160AA |
| | 4532 | 2.30±0.20 | ±10% | | | C4532JB2A684K230KA |
| | | | ±20% | | | C4532JB2A684M230KA |
| 5750 | 1.60±0.20 | ±10% | | | C5750JB2A684K160KA | |
| | | ±20% | | | C5750JB2A684M160KA | |
| | 2.30±0.20 | ±10% | | C5750JB2E684K230KA | | |
| | | ±20% | | C5750JB2E684M230KA | | |

■ 灰色涂层的品名为不推荐用于新设计中的产品。

⚠ 为了能够更加正确、安全地使用产品，请务必索取能进一步确认详细特性、规格的采购规格书。
 记载内容可能因为产品改良等原因不经预告而更改，恕不另行通知。

电容范围表

温度特性: JB (-25 to +85°C、±10%)

| 电容 | 尺寸 | 厚度 (mm) | 电容容差 | 目录型号 | |
|-------|-----------|------------|--------------------|--------------------|----------------|
| | | | | 额定电压 Edc: 250V | 额定电压 Edc: 100V |
| 1μF | 3216 | 1.60±0.20 | ±10% | C3216JB2A105K160AA | |
| | | | ±20% | C3216JB2A105M160AA | |
| | 3225 | 2.00±0.20 | ±10% | C3225JB2A105K200AA | |
| | | | ±20% | C3225JB2A105M200AA | |
| | 4532 | 2.30±0.20 | ±10% | C4532JB2A105K230KA | |
| | | | ±20% | C4532JB2A105M230KA | |
| 5750 | 2.30±0.20 | ±10% | C5750JB2E105K230KA | C5750JB2A105K230KA | |
| | | ±20% | C5750JB2E105M230KA | C5750JB2A105M230KA | |
| 1.5μF | 3225 | 2.00±0.20 | ±10% | C3225JB2A155K200AB | |
| | | | ±20% | C3225JB2A155M200AB | |
| | 4532 | 2.30±0.20 | ±10% | C4532JB2A155K230KA | |
| | | | ±20% | C4532JB2A155M230KA | |
| | 5750 | 2.30±0.20 | ±10% | C5750JB2A155K230KA | |
| | | | ±20% | C5750JB2A155M230KA | |
| 2.2μF | 3225 | 2.30±0.20 | ±10% | C3225JB2A225K230AB | |
| | | | ±20% | C3225JB2A225M230AB | |
| | 4532 | 2.30±0.20 | ±10% | C4532JB2A225K230KA | |
| | | | ±20% | C4532JB2A225M230KA | |
| | 5750 | 2.30±0.20 | ±10% | C5750JB2A225K230KA | |
| | | | ±20% | C5750JB2A225M230KA | |
| 3.3μF | 5750 | 2.30±0.20 | ±10% | C5750JB2A335K230KA | |
| | | | ±20% | C5750JB2A335M230KA | |
| 4.7μF | 5750 | 2.30±0.20 | ±10% | C5750JB2A475K230KA | |
| | | | ±20% | C5750JB2A475M230KA | |

■ 灰色涂层的品名为不推荐用于新设计中的产品。

电容范围表

温度特性: X5R (-55 to +85°C、±15%)

| 电容 | 尺寸 | 厚度 (mm) | 电容容差 | 目录型号 | | |
|-------|-----------|------------|---------------------|---------------------|---------------------|---------------------|
| | | | | 额定电压 Edc: 630V | 额定电压 Edc: 250V | 额定电压 Edc: 100V |
| 1nF | 1608 | 0.80±0.10 | ±10% | | | C1608X5R2A102K080AA |
| | | | ±20% | | | C1608X5R2A102M080AA |
| | 2012 | 0.85±0.15 | ±10% | | C2012X5R2E102K085AA | |
| | | | ±20% | | C2012X5R2E102M085AA | |
| 3216 | 1.15±0.15 | ±10% | C3216X5R2J102K115AA | | | |
| | | ±20% | C3216X5R2J102M115AA | | | |
| 1.5nF | 1608 | 0.80±0.10 | ±10% | | | C1608X5R2A152K080AA |
| | | | ±20% | | | C1608X5R2A152M080AA |
| | 2012 | 0.85±0.15 | ±10% | | C2012X5R2E152K085AA | |
| | | | ±20% | | C2012X5R2E152M085AA | |
| 3216 | 1.15±0.15 | ±10% | C3216X5R2J152K115AA | | | |
| | | ±20% | C3216X5R2J152M115AA | | | |
| 2.2nF | 1608 | 0.80±0.10 | ±10% | | | C1608X5R2A222K080AA |
| | | | ±20% | | | C1608X5R2A222M080AA |
| | 2012 | 0.85±0.15 | ±10% | | C2012X5R2E222K085AA | |
| | | | ±20% | | C2012X5R2E222M085AA | |
| 3216 | 1.15±0.15 | ±10% | C3216X5R2J222K115AA | | | |
| | | ±20% | C3216X5R2J222M115AA | | | |
| 3.3nF | 1608 | 0.80±0.10 | ±10% | | | C1608X5R2A332K080AA |
| | | | ±20% | | | C1608X5R2A332M080AA |
| | 2012 | 0.85±0.15 | ±10% | | C2012X5R2E332K085AA | |
| | | | ±20% | | C2012X5R2E332M085AA | |
| 3216 | 1.15±0.15 | ±10% | C3216X5R2J332K115AA | | | |
| | | ±20% | C3216X5R2J332M115AA | | | |
| 4.7nF | 1608 | 0.80±0.10 | ±10% | | | C1608X5R2A472K080AA |
| | | | ±20% | | | C1608X5R2A472M080AA |
| | 2012 | 0.85±0.15 | ±10% | | C2012X5R2E472K085AA | |
| | | | ±20% | | C2012X5R2E472M085AA | |
| 3216 | 1.15±0.15 | ±10% | C3216X5R2J472K115AA | | | |
| | | ±20% | C3216X5R2J472M115AA | | | |
| 6.8nF | 1608 | 0.80±0.10 | ±10% | | | C1608X5R2A682K080AA |
| | | | ±20% | | | C1608X5R2A682M080AA |
| | 2012 | 1.25±0.20 | ±10% | | C2012X5R2E682K125AA | |
| | | | ±20% | | C2012X5R2E682M125AA | |
| 3216 | 1.15±0.15 | ±10% | C3216X5R2J682K115AA | | | |
| | | ±20% | C3216X5R2J682M115AA | | | |
| 10nF | 1608 | 0.80±0.10 | ±10% | | | C1608X5R2A103K080AA |
| | | | ±20% | | | C1608X5R2A103M080AA |
| | 2012 | 1.25±0.20 | ±10% | | C2012X5R2E103K125AA | |
| | | | ±20% | | C2012X5R2E103M125AA | |
| 3216 | 1.15±0.15 | ±10% | C3216X5R2J103K115AA | | | |
| | | ±20% | C3216X5R2J103M115AA | | | |
| 15nF | 1608 | 0.80±0.10 | ±10% | | | C1608X5R2A153K080AA |
| | | | ±20% | | | C1608X5R2A153M080AA |
| | 2012 | 1.25±0.20 | ±10% | | C2012X5R2E153K125AA | |
| | | | ±20% | | C2012X5R2E153M125AA | |
| 3216 | 1.30±0.20 | ±10% | C3216X5R2J153K130AA | | | |
| | | ±20% | C3216X5R2J153M130AA | | | |
| 22nF | 1608 | 0.80±0.10 | ±10% | | | C1608X5R2A223K080AA |
| | | | ±20% | | | C1608X5R2A223M080AA |
| | 2012 | 1.25±0.20 | ±10% | | C2012X5R2E223K125AA | |
| | | | ±20% | | C2012X5R2E223M125AA | |
| 3216 | 1.30±0.20 | ±10% | C3216X5R2J223K130AA | | | |
| | | ±20% | C3216X5R2J223M130AA | | | |
| 33nF | 2012 | 1.25±0.20 | ±10% | | | C2012X5R2A333K125AA |
| | | | ±20% | | | C2012X5R2A333M125AA |
| | 3216 | 1.60±0.20 | ±10% | C3216X5R2J333K160AA | C3216X5R2E333K160AA | |
| | | | ±20% | C3216X5R2J333M160AA | C3216X5R2E333M160AA | |
| 47nF | 2012 | 1.25±0.20 | ±10% | | | C2012X5R2A473K125AA |
| | | | ±20% | | | C2012X5R2A473M125AA |
| 3216 | 1.60±0.20 | ±10% | | C3216X5R2E473K160AA | | |
| | | ±20% | | C3216X5R2E473M160AA | | |
| 68nF | 3225 | 2.00±0.20 | ±10% | C3225X5R2J473K200AA | | |
| | | | ±20% | C3225X5R2J473M200AA | | |
| | 2012 | 0.85±0.15 | ±10% | | | C2012X5R2A683K085AA |
| | | | ±20% | | | C2012X5R2A683M085AA |
| 3216 | 1.60±0.20 | ±10% | | C3216X5R2E683K160AA | | |
| | | ±20% | | C3216X5R2E683M160AA | | |
| 3225 | 2.00±0.20 | ±10% | C3225X5R2J683K200AA | | | |
| | | ±20% | C3225X5R2J683M200AA | | | |

■ 灰色涂层的品名为不推荐用于新设计中的产品。

⚠ 为了能够更加正确、安全地使用产品，请务必索取能进一步确认详细特性、规格的采购规格书。
 记载内容可能因为产品改良等原因不经预告而更改，恕不另行通知。

电容范围表

温度特性: X5R (-55 to +85°C、±15%)

| 电容 | 尺寸 | 厚度 (mm) | 电容容差 | 目录型号 | | |
|-------|-----------|------------|---------------------|---------------------|---------------------|---------------------|
| | | | | 额定电压 Edc: 630V | 额定电压 Edc: 250V | 额定电压 Edc: 100V |
| 100nF | 2012 | 1.25±0.20 | ±10% | | | C2012X5R2A104K125AA |
| | | | ±20% | | | C2012X5R2A104M125AA |
| | 3216 | 1.60±0.20 | ±10% | | C3216X5R2E104K160AA | |
| | | | ±20% | | C3216X5R2E104M160AA | |
| 4532 | 2.30±0.20 | ±10% | C4532X5R2J104K230KA | | | |
| | | ±20% | C4532X5R2J104M230KA | | | |
| 150nF | 3216 | 1.60±0.20 | ±10% | | | C3216X5R2A154K160AA |
| | | | ±20% | | | C3216X5R2A154M160AA |
| | 3225 | 2.00±0.20 | ±10% | | C3225X5R2E154K200AA | |
| | | | ±20% | | C3225X5R2E154M200AA | |
| 5750 | 1.60±0.20 | ±10% | C5750X5R2J154K160KA | | | |
| | | ±20% | C5750X5R2J154M160KA | | | |
| 220nF | 3216 | 1.15±0.15 | ±10% | | | C3216X5R2A224K115AA |
| | | | ±20% | | | C3216X5R2A224M115AA |
| | 3225 | 2.00±0.20 | ±10% | | C3225X5R2E224K200AA | |
| | | | ±20% | | C3225X5R2E224M200AA | |
| 5750 | 2.30±0.20 | ±10% | C5750X5R2J224K230KA | | | |
| | | ±20% | C5750X5R2J224M230KA | | | |
| 330nF | 3216 | 1.30±0.20 | ±10% | | | C3216X5R2A334K130AA |
| | | | ±20% | | | C3216X5R2A334M130AA |
| | 4532 | 2.30±0.20 | ±10% | | C4532X5R2E334K230KA | |
| | | | ±20% | | C4532X5R2E334M230KA | |
| 470nF | 3216 | 1.60±0.20 | ±10% | | | C3216X5R2A474K160AA |
| | | | ±20% | | | C3216X5R2A474M160AA |
| | 4532 | 2.30±0.20 | ±10% | C4532X5R2E474K230KA | | |
| | | | ±20% | C4532X5R2E474M230KA | | |
| 680nF | 3216 | 1.60±0.20 | ±10% | | | C3216X5R2A684K160AA |
| | | | ±20% | | | C3216X5R2A684M160AA |
| | 5750 | 2.30±0.20 | ±10% | C5750X5R2E684K230KA | | |
| | | | ±20% | C5750X5R2E684M230KA | | |
| 1µF | 3216 | 1.60±0.20 | ±10% | | | C3216X5R2A105K160AA |
| | | | ±20% | | | C3216X5R2A105M160AA |
| | 5750 | 2.30±0.20 | ±10% | C5750X5R2E105K230KA | | |
| | | | ±20% | C5750X5R2E105M230KA | | |
| 1.5µF | 3225 | 2.00±0.20 | ±10% | | | C3225X5R2A155K200AB |
| | | | ±20% | | | C3225X5R2A155M200AB |
| 2.2µF | 3225 | 2.30±0.20 | ±10% | | | C3225X5R2A225K230AB |
| | | | ±20% | | | C3225X5R2A225M230AB |
| 3.3µF | 5750 | 2.30±0.20 | ±10% | | | C5750X5R2A335K230KA |
| | | | ±20% | | | C5750X5R2A335M230KA |
| 4.7µF | 5750 | 2.30±0.20 | ±10% | | | C5750X5R2A475K230KA |
| | | | ±20% | | | C5750X5R2A475M230KA |

■灰色涂层的品名为不推荐用于新设计中的产品。

电容范围表

温度特性: X6S (-55 to +105°C、±22%)

| 电容 | 尺寸 | 厚度 (mm) | 电容容差 | 目录型号 |
|-------|------|------------|------|---------------------|
| | | | | 额定电压 Edc: 450V |
| 1µF | 5750 | 2.50±0.30 | ±10% | C5750X6S2W105K250KA |
| | | | ±20% | C5750X6S2W105M250KA |
| 2.2µF | 5750 | 2.50±0.30 | ±10% | C5750X6S2W225K250KA |
| | | | ±20% | C5750X6S2W225M250KA |

■灰色涂层的品名为不推荐用于新设计中的产品。

⚠ 为了能够更加正确、安全地使用产品，请务必索取能进一步确认详细特性、规格的采购规格书。
 记载内容可能因为产品改良等原因不经预告而更改，恕不另行通知。

电容范围表

温度特性: X7R (-55 to +125°C, ±15%)

| 电容 | 尺寸 | 厚度 (mm) | 电容容差 | 目录型号 | | |
|-----------|-----------|------------|---------------------|---------------------|---------------------|---------------------|
| | | | | 额定电压 Edc: 630V | 额定电压 Edc: 250V | 额定电压 Edc: 100V |
| 1nF | 1608 | 0.80±0.10 | ±10% | | | C1608X7R2A102K080AA |
| | | | ±20% | | | C1608X7R2A102M080AA |
| | 2012 | 0.85±0.15 | ±10% | | C2012X7R2E102K085AA | C2012X7R2A102K085AA |
| | | | ±20% | | C2012X7R2E102M085AA | C2012X7R2A102M085AA |
| | 3216 | 1.15±0.15 | ±10% | C3216X7R2J102K115AA | | |
| | | | ±20% | C3216X7R2J102M115AA | | |
| 1.5nF | 1608 | 0.80±0.10 | ±10% | | | C1608X7R2A152K080AA |
| | | | ±20% | | | C1608X7R2A152M080AA |
| | 2012 | 0.85±0.15 | ±10% | | C2012X7R2E152K085AA | C2012X7R2A152K085AA |
| | | | ±20% | | C2012X7R2E152M085AA | C2012X7R2A152M085AA |
| | 3216 | 1.15±0.15 | ±10% | C3216X7R2J152K115AA | | |
| | | | ±20% | C3216X7R2J152M115AA | | |
| 2.2nF | 1608 | 0.80±0.10 | ±10% | | | C1608X7R2A222K080AA |
| | | | ±20% | | | C1608X7R2A222M080AA |
| | 2012 | 0.85±0.15 | ±10% | | C2012X7R2E222K085AA | C2012X7R2A222K085AA |
| | | | ±20% | | C2012X7R2E222M085AA | C2012X7R2A222M085AA |
| | 3216 | 1.15±0.15 | ±10% | C3216X7R2J222K115AA | | |
| | | | ±20% | C3216X7R2J222M115AA | | |
| 3.3nF | 1608 | 0.80±0.10 | ±10% | | | C1608X7R2A332K080AA |
| | | | ±20% | | | C1608X7R2A332M080AA |
| | 2012 | 0.85±0.15 | ±10% | | C2012X7R2E332K085AA | C2012X7R2A332K085AA |
| | | | ±20% | | C2012X7R2E332M085AA | C2012X7R2A332M085AA |
| | 3216 | 1.15±0.15 | ±10% | C3216X7R2J332K115AA | | |
| | | | ±20% | C3216X7R2J332M115AA | | |
| 4.7nF | 1608 | 0.80±0.10 | ±10% | | | C1608X7R2A472K080AA |
| | | | ±20% | | | C1608X7R2A472M080AA |
| | 2012 | 0.85±0.15 | ±10% | | C2012X7R2E472K085AA | C2012X7R2A472K085AA |
| | | | ±20% | | C2012X7R2E472M085AA | C2012X7R2A472M085AA |
| | 3216 | 1.15±0.15 | ±10% | C3216X7R2J472K115AA | | |
| | | | ±20% | C3216X7R2J472M115AA | | |
| 6.8nF | 1608 | 0.80±0.10 | ±10% | | | C1608X7R2A682K080AA |
| | | | ±20% | | | C1608X7R2A682M080AA |
| | 2012 | 0.85±0.15 | ±10% | | | C2012X7R2A682K085AA |
| | | | ±20% | | | C2012X7R2A682M085AA |
| | 1.25±0.20 | | ±10% | | C2012X7R2E682K125AA | |
| | | | ±20% | | C2012X7R2E682M125AA | |
| 3216 | 1.15±0.15 | ±10% | C3216X7R2J682K115AA | | | |
| | | ±20% | C3216X7R2J682M115AA | | | |
| 10nF | 1608 | 0.80±0.10 | ±10% | | | C1608X7R2A103K080AA |
| | | | ±20% | | | C1608X7R2A103M080AA |
| | 2012 | 0.85±0.15 | ±10% | | | C2012X7R2A103K085AA |
| | | | ±20% | | | C2012X7R2A103M085AA |
| | 1.25±0.20 | | ±10% | | C2012X7R2E103K125AA | |
| | | | ±20% | | C2012X7R2E103M125AA | |
| 3216 | 1.15±0.15 | ±10% | C3216X7R2J103K115AA | | | |
| | | ±20% | C3216X7R2J103M115AA | | | |
| 15nF | 1608 | 0.80±0.10 | ±10% | | | C1608X7R2A153K080AA |
| | | | ±20% | | | C1608X7R2A153M080AA |
| | 2012 | 1.25±0.20 | ±10% | | C2012X7R2E153K125AA | C2012X7R2A153K125AA |
| | | | ±20% | | C2012X7R2E153M125AA | C2012X7R2A153M125AA |
| | 1.15±0.15 | | ±10% | | C3216X7R2E153K115AA | |
| | | | ±20% | | C3216X7R2E153M115AA | |
| 1.30±0.20 | | ±10% | C3216X7R2J153K130AA | | | |
| | | ±20% | C3216X7R2J153M130AA | | | |
| 22nF | 1608 | 0.80±0.10 | ±10% | | | C1608X7R2A223K080AA |
| | | | ±20% | | | C1608X7R2A223M080AA |
| | 2012 | 1.25±0.20 | ±10% | | C2012X7R2E223K125AA | C2012X7R2A223K125AA |
| | | | ±20% | | C2012X7R2E223M125AA | C2012X7R2A223M125AA |
| | 1.15±0.15 | | ±10% | | C3216X7R2E223K115AA | |
| | | | ±20% | | C3216X7R2E223M115AA | |
| 1.30±0.20 | | ±10% | C3216X7R2J223K130AA | | | |
| | | ±20% | C3216X7R2J223M130AA | | | |
| 33nF | 2012 | 1.25±0.20 | ±10% | | | C2012X7R2A333K125AA |
| | | | ±20% | | | C2012X7R2A333M125AA |
| | 1.15±0.15 | | ±10% | | | C3216X7R2A333K115AA |
| | | | ±20% | | | C3216X7R2A333M115AA |
| | 1.60±0.20 | | ±10% | C3216X7R2J333K160AA | C3216X7R2E333K160AA | |
| | | | ±20% | C3216X7R2J333M160AA | C3216X7R2E333M160AA | |

■ 灰色涂层的品名为不推荐用于新设计中的产品。

⚠ 为了能够更加正确、安全地使用产品，请务必索取能进一步确认详细特性、规格的采购规格书。
记载内容可能因为产品改良等原因不经预告而更改，恕不另行通知。

电容范围表

温度特性: X7R (-55 to +125°C, ±15%)

| 电容 | 尺寸 | 厚度 (mm) | 电容容差 | 目录型号 | | |
|-------|-----------|------------|---------------------|---------------------|---------------------|---------------------|
| | | | | 额定电压 Edc: 630V | 额定电压 Edc: 250V | 额定电压 Edc: 100V |
| 47nF | 2012 | 1.25±0.20 | ±10% | | | C2012X7R2A473K125AA |
| | | | ±20% | | | C2012X7R2A473M125AA |
| | 3216 | 1.15±0.15 | ±10% | | | C3216X7R2A473K115AA |
| | | | ±20% | | | C3216X7R2A473M115AA |
| | 3225 | 2.00±0.20 | ±10% | C3225X7R2J473K200AA | C3216X7R2E473K160AA | |
| | | | ±20% | C3225X7R2J473M200AA | C3216X7R2E473M160AA | |
| 68nF | 2012 | 0.85±0.15 | ±10% | | | C2012X7R2A683K085AA |
| | | | ±20% | | | C2012X7R2A683M085AA |
| | 3216 | 1.60±0.20 | ±10% | | C3216X7R2E683K160AA | C3216X7R2A683K160AA |
| | | | ±20% | | C3216X7R2E683M160AA | C3216X7R2A683M160AA |
| | 3225 | 2.00±0.20 | ±10% | C3225X7R2J683K200AA | | |
| | | | ±20% | C3225X7R2J683M200AA | | |
| 4532 | 1.60±0.20 | ±10% | C4532X7R2J683K160KA | | | |
| | | ±20% | C4532X7R2J683M160KA | | | |
| 100nF | 2012 | 1.25±0.20 | ±10% | | | C2012X7R2A104K125AA |
| | | | ±20% | | | C2012X7R2A104M125AA |
| | 3216 | 1.60±0.20 | ±10% | | C3216X7R2E104K160AA | C3216X7R2A104K160AA |
| | | | ±20% | | C3216X7R2E104M160AA | C3216X7R2A104M160AA |
| | 3225 | 2.00±0.20 | ±10% | | C3225X7R2E104K200AA | |
| | | | ±20% | | C3225X7R2E104M200AA | |
| 4532 | 2.30±0.20 | ±10% | C4532X7R2J104K230KA | | | |
| | | ±20% | C4532X7R2J104M230KA | | | |
| 150nF | 3216 | 1.60±0.20 | ±10% | | | C3216X7R2A154K160AA |
| | | | ±20% | | | C3216X7R2A154M160AA |
| | 3225 | 2.00±0.20 | ±10% | | C3225X7R2E154K200AA | |
| | | | ±20% | | C3225X7R2E154M200AA | |
| | 4532 | 1.60±0.20 | ±10% | | C4532X7R2E154K160KA | |
| | | | ±20% | | C4532X7R2E154M160KA | |
| 5750 | 1.60±0.20 | ±10% | C5750X7R2J154K160KA | | | |
| | | ±20% | C5750X7R2J154M160KA | | | |
| 220nF | 3216 | 1.15±0.15 | ±10% | | | C3216X7R2A224K115AA |
| | | | ±20% | | | C3216X7R2A224M115AA |
| | 3225 | 2.00±0.20 | ±10% | | C3225X7R2E224K200AA | |
| | | | ±20% | | C3225X7R2E224M200AA | |
| | 4532 | 2.30±0.20 | ±10% | | C4532X7R2E224K230KA | |
| | | | ±20% | | C4532X7R2E224M230KA | |
| 5750 | 2.30±0.20 | ±10% | C5750X7R2J224K230KA | | | |
| | | ±20% | C5750X7R2J224M230KA | | | |
| 330nF | 3216 | 1.30±0.20 | ±10% | | | C3216X7R2A334K130AA |
| | | | ±20% | | | C3216X7R2A334M130AA |
| | 3225 | 2.00±0.20 | ±10% | | | C3225X7R2A334K200AA |
| | | | ±20% | | | C3225X7R2A334M200AA |
| | 4532 | 2.30±0.20 | ±10% | | C4532X7R2E334K230KA | |
| | | | ±20% | | C4532X7R2E334M230KA | |
| 5750 | 1.60±0.20 | ±10% | | C5750X7R2E334K160KA | | |
| | | ±20% | | C5750X7R2E334M160KA | | |
| 470nF | 3216 | 1.60±0.20 | ±10% | | | C3216X7R2A474K160AA |
| | | | ±20% | | | C3216X7R2A474M160AA |
| | 3225 | 2.00±0.20 | ±10% | | | C3225X7R2A474K200AA |
| | | | ±20% | | | C3225X7R2A474M200AA |
| | 4532 | 2.30±0.20 | ±10% | | C4532X7R2E474K230KA | |
| | | | ±20% | | C4532X7R2E474M230KA | |
| 5750 | 2.30±0.20 | ±10% | | C5750X7R2E474K230KA | | |
| | | ±20% | | C5750X7R2E474M230KA | | |
| 680nF | 3216 | 1.60±0.20 | ±10% | | | C3216X7R2A684K160AA |
| | | | ±20% | | | C3216X7R2A684M160AA |
| | 3225 | 1.60±0.20 | ±10% | | | C3225X7R2A684K160AA |
| | | | ±20% | | | C3225X7R2A684M160AA |
| | 4532 | 2.30±0.20 | ±10% | | | C4532X7R2A684K230KA |
| | | | ±20% | | | C4532X7R2A684M230KA |
| 5750 | 1.60±0.20 | ±10% | | | C5750X7R2A684K160KA | |
| | | ±20% | | | C5750X7R2A684M160KA | |
| 5750 | 2.30±0.20 | ±10% | | C5750X7R2E684K230KA | | |
| | | ±20% | | C5750X7R2E684M230KA | | |

■ 灰色涂层的品名为不推荐用于新设计中的产品。

▲ 为了能够更加正确、安全地使用产品，请务必索取能进一步确认详细特性、规格的采购规格书。
 记载内容可能因为产品改良等原因不经预告而更改，恕不另行通知。

电容范围表

温度特性: X7R (-55 to +125°C、±15%)

| 电容 | 尺寸 | 厚度 (mm) | 电容容差 | 目录型号 | |
|-------|-----------|------------|---------------------|---------------------|---------------------|
| | | | | 额定电压 Edc: 250V | 额定电压 Edc: 100V |
| 1μF | 3216 | 1.60±0.20 | ±10% | | C3216X7R2A105K160AA |
| | | | ±20% | | C3216X7R2A105M160AA |
| | 3225 | 2.00±0.20 | ±10% | | C3225X7R2A105K200AA |
| | | | ±20% | | C3225X7R2A105M200AA |
| | 4532 | 2.30±0.20 | ±10% | | C4532X7R2A105K230KA |
| | | | ±20% | | C4532X7R2A105M230KA |
| 5750 | 2.30±0.20 | ±10% | C5750X7R2E105K230KA | C5750X7R2A105K230KA | |
| | | ±20% | C5750X7R2E105M230KA | C5750X7R2A105M230KA | |
| 1.5μF | 3225 | 2.00±0.20 | ±10% | | C3225X7R2A155K200AB |
| | | | ±20% | | C3225X7R2A155M200AB |
| | 4532 | 2.30±0.20 | ±10% | | C4532X7R2A155K230KA |
| | | | ±20% | | C4532X7R2A155M230KA |
| | 5750 | 2.30±0.20 | ±10% | | C5750X7R2A155K230KA |
| | | | ±20% | | C5750X7R2A155M230KA |
| 2.2μF | 3225 | 2.30±0.20 | ±10% | | C3225X7R2A225K230AB |
| | | | ±20% | | C3225X7R2A225M230AB |
| | 4532 | 2.30±0.20 | ±10% | | C4532X7R2A225K230KA |
| | | | ±20% | | C4532X7R2A225M230KA |
| | 5750 | 2.30±0.20 | ±10% | | C5750X7R2A225K230KA |
| | | | ±20% | | C5750X7R2A225M230KA |
| 3.3μF | 5750 | 2.30±0.20 | ±10% | | C5750X7R2A335K230KA |
| | | | ±20% | | C5750X7R2A335M230KA |
| 4.7μF | 5750 | 2.30±0.20 | ±10% | | C5750X7R2A475K230KA |
| | | | ±20% | | C5750X7R2A475M230KA |

■ 灰色涂层的品名为不推荐用于新设计中的产品。

电容范围表

温度特性: X7S (-55 to +125°C、±22%)

| 电容 | 尺寸 | 厚度 (mm) | 电容容差 | 目录型号 | |
|-------|-----------|-----------------|---------------------|---------------------|--|
| | | | | 额定电压 Edc: 100V | |
| 1nF | 1005 | 0.50±0.05 | ±10% | C1005X7S2A102K050BB | |
| | | | ±20% | C1005X7S2A102M050BB | |
| 1.5nF | 1005 | 0.50±0.05 | ±10% | C1005X7S2A152K050BB | |
| | | | ±20% | C1005X7S2A152M050BB | |
| 2.2nF | 1005 | 0.50±0.05 | ±10% | C1005X7S2A222K050BB | |
| | | | ±20% | C1005X7S2A222M050BB | |
| 3.3nF | 1005 | 0.50±0.05 | ±10% | C1005X7S2A332K050BB | |
| | | | ±20% | C1005X7S2A332M050BB | |
| 4.7nF | 1005 | 0.50±0.05 | ±10% | C1005X7S2A472K050BB | |
| | | | ±20% | C1005X7S2A472M050BB | |
| 6.8nF | 1005 | 0.50±0.05 | ±10% | C1005X7S2A682K050BB | |
| | | | ±20% | C1005X7S2A682M050BB | |
| 10nF | 1005 | 0.50±0.05 | ±10% | C1005X7S2A103K050BB | |
| | | | ±20% | C1005X7S2A103M050BB | |
| 33nF | 1608 | 0.80±0.10 | ±10% | C1608X7S2A333K080AB | |
| | | | ±20% | C1608X7S2A333M080AB | |
| 47nF | 1608 | 0.80±0.10 | ±10% | C1608X7S2A473K080AB | |
| | | | ±20% | C1608X7S2A473M080AB | |
| 68nF | 1608 | 0.80±0.10 | ±10% | C1608X7S2A683K080AB | |
| | | | ±20% | C1608X7S2A683M080AB | |
| 100nF | 1608 | 0.80±0.10 | ±10% | C1608X7S2A104K080AB | |
| | | | ±20% | C1608X7S2A104M080AB | |
| 150nF | 2012 | 0.85±0.15 | ±10% | C2012X7S2A154K085AB | |
| | | | ±20% | C2012X7S2A154M085AB | |
| 220nF | 2012 | 0.85±0.15 | ±10% | C2012X7S2A224K085AB | |
| | | | ±20% | C2012X7S2A224M085AB | |
| 330nF | 2012 | 1.25±0.20 | ±10% | C2012X7S2A334K125AB | |
| | | | ±20% | C2012X7S2A334M125AB | |
| 470nF | 2012 | 1.25±0.20 | ±10% | C2012X7S2A474K125AB | |
| | | | ±20% | C2012X7S2A474M125AB | |
| 680nF | 2012 | 1.25±0.20 | ±10% | C2012X7S2A684K125AB | |
| | | | ±20% | C2012X7S2A684M125AB | |
| 1µF | 2012 | 1.25±0.20 | ±10% | C2012X7S2A105K125AB | |
| | | | ±20% | C2012X7S2A105M125AB | |
| 1.5µF | 3216 | 1.60±0.20 | ±10% | C3216X7S2A155K160AB | |
| | | | ±20% | C3216X7S2A155M160AB | |
| 2.2µF | 3216 | 1.60±0.20 | ±10% | C3216X7S2A225K160AB | |
| | | | ±20% | C3216X7S2A225M160AB | |
| 3.3µF | 3216 | 1.60+0.30,-0.10 | ±10% | C3216X7S2A335K160AB | |
| | | | ±20% | C3216X7S2A335M160AB | |
| | 3225 | 2.00±0.20 | ±10% | C3225X7S2A335K200AB | |
| | | | ±20% | C3225X7S2A335M200AB | |
| 4532 | 2.00±0.20 | ±10% | C4532X7S2A335K200KB | | |
| | | ±20% | C4532X7S2A335M200KB | | |
| 4.7µF | 3225 | 2.00±0.20 | ±10% | C3225X7S2A475K200AB | |
| | | | ±20% | C3225X7S2A475M200AB | |
| | 4532 | 2.30±0.20 | ±10% | C4532X7S2A475K230KB | |
| | | | ±20% | C4532X7S2A475M230KB | |
| 6.8µF | 5750 | 2.00±0.20 | ±10% | C5750X7S2A685K200KB | |
| | | | ±20% | C5750X7S2A685M200KB | |
| 10µF | 5750 | 2.30±0.20 | ±10% | C5750X7S2A106K230KB | |
| | | | ±20% | C5750X7S2A106M230KB | |
| 15µF | 5750 | 2.50±0.30 | ±20% | C5750X7S2A156M250KB | |
| 22µF | 5750 | 2.80±0.30 | ±20% | C5750X7S2A226M280KB | |

■ 灰色涂层的品名为不推荐用于新设计中的产品。

电容范围表

温度特性: X7T (-55 to +125°C、+22, -33%)

| 电容 | 尺寸 | 厚度 (mm) | 电容容差 | 目录型号 | | | |
|-------|------|------------|------|---------------------|---------------------|---------------------|---------------------|
| | | | | 额定电压 Edc: 630V | 额定电压 Edc: 450V | 额定电压 Edc: 350V | 额定电压 Edc: 250V |
| 10nF | 2012 | 0.85±0.15 | ±10% | | C2012X7T2W103K085AA | C2012X7T2V103K085AA | |
| | | | ±20% | | C2012X7T2W103M085AA | C2012X7T2V103M085AA | |
| | 3216 | 0.85±0.15 | ±10% | C3216X7T2J103K085AC | | | |
| | | | ±20% | C3216X7T2J103M085AC | | | |
| 15nF | 2012 | 0.85±0.15 | ±10% | | C2012X7T2W153K085AA | C2012X7T2V153K085AA | |
| | | | ±20% | | C2012X7T2W153M085AA | C2012X7T2V153M085AA | |
| | 3216 | 0.85±0.15 | ±10% | C3216X7T2J153K085AC | | | |
| | | | ±20% | C3216X7T2J153M085AC | | | |
| 22nF | 2012 | 1.25±0.20 | ±10% | | C2012X7T2W223K125AA | C2012X7T2V223K125AA | |
| | | | ±20% | | C2012X7T2W223M125AA | C2012X7T2V223M125AA | |
| | 3216 | 1.15±0.15 | ±10% | C3216X7T2J223K115AC | | | |
| | | | ±20% | C3216X7T2J223M115AC | | | |
| 33nF | 2012 | 1.25±0.20 | ±10% | | C2012X7T2W333K125AA | C2012X7T2V333K125AA | C2012X7T2E333K125AA |
| | | | ±20% | | C2012X7T2W333M125AA | C2012X7T2V333M125AA | C2012X7T2E333M125AA |
| | 3216 | 1.15±0.15 | ±10% | C3216X7T2J333K115AC | | | |
| | | | ±20% | C3216X7T2J333M115AC | | | |
| 47nF | 2012 | 1.25±0.20 | ±10% | | C2012X7T2W473K125AA | C2012X7T2V473K125AA | C2012X7T2E473K125AA |
| | | | ±20% | | C2012X7T2W473M125AA | C2012X7T2V473M125AA | C2012X7T2E473M125AA |
| | 3216 | 1.60±0.20 | ±10% | C3216X7T2J473K160AC | | | |
| | | | ±20% | C3216X7T2J473M160AC | | | |
| 68nF | 2012 | 1.25±0.20 | ±10% | | | | C2012X7T2E683K125AA |
| | | | ±20% | | | | C2012X7T2E683M125AA |
| | 3216 | 1.30±0.20 | ±10% | | C3216X7T2W683K130AA | C3216X7T2V683K130AA | |
| | | | ±20% | | C3216X7T2W683M130AA | C3216X7T2V683M130AA | |
| 100nF | 2012 | 1.25±0.20 | ±10% | | | | C2012X7T2E104K125AA |
| | | | ±20% | | | | C2012X7T2E104M125AA |
| | 3216 | 1.60±0.20 | ±10% | | C3216X7T2W104K160AA | C3216X7T2V104K160AA | |
| | | | ±20% | | C3216X7T2W104M160AA | C3216X7T2V104M160AA | |
| | 3225 | 1.60±0.20 | ±10% | C3225X7T2J104K160AC | | | |
| | | | ±20% | C3225X7T2J104M160AC | | | |
| | 3216 | 1.30±0.20 | ±10% | | | | C3216X7T2E154K130AA |
| | | | ±20% | | | | C3216X7T2E154M130AA |
| 150nF | 3225 | 2.00±0.20 | ±10% | C3225X7T2J154K200AC | | | |
| | | | ±20% | C3225X7T2J154M200AC | | | |
| | 4532 | 1.60±0.20 | ±10% | C4532X7T2J154K160KC | | | |
| | | | ±20% | C4532X7T2J154M160KC | | | |
| | 3216 | 1.60±0.20 | ±10% | | | | C3216X7T2E224K160AA |
| | | | ±20% | | | | C3216X7T2E224M160AA |
| 220nF | 3225 | 2.00±0.20 | ±10% | | C3225X7T2W224K200AA | | |
| | | | ±20% | | C3225X7T2W224M200AA | | |
| | 4532 | 2.00±0.20 | ±10% | C4532X7T2J224K200KC | | | |
| | | | ±20% | C4532X7T2J224M200KC | | | |
| 300nF | 4532 | 2.50±0.30 | ±10% | C4532X7T2J304K250KA | | | |
| | | | ±20% | C4532X7T2J304M250KA | | | |
| | 3225 | 2.00±0.20 | ±10% | | | | C3225X7T2E334K200AA |
| | | | ±20% | | | | C3225X7T2E334M200AA |
| 330nF | 4532 | 1.60±0.20 | ±10% | | C4532X7T2W334K160KA | | |
| | | | ±20% | | C4532X7T2W334M160KA | | |
| | 5750 | 2.00±0.20 | ±10% | C5750X7T2J334K200KC | | | |
| | | | ±20% | C5750X7T2J334M200KC | | | |
| 470nF | 4532 | 2.30±0.20 | ±10% | | C4532X7T2W474K230KA | | |
| | | | ±20% | | C4532X7T2W474M230KA | | |
| | 5750 | 2.50±0.30 | ±10% | C5750X7T2J474K250KC | | | |
| | | | ±20% | C5750X7T2J474M250KC | | | |
| 680nF | 4532 | 1.60±0.20 | ±10% | | | | C4532X7T2E684K160KA |
| | | | ±20% | | | | C4532X7T2E684M160KA |
| | 5750 | 2.00±0.20 | ±10% | | C5750X7T2W684K200KA | | |
| | | | ±20% | | C5750X7T2W684M200KA | | |
| 1μF | 4532 | 2.50±0.30 | ±10% | | | | C4532X7T2E105K250KA |
| | | | ±20% | | | | C4532X7T2E105M250KA |
| | 5750 | 2.50±0.30 | ±10% | | C5750X7T2W105K250KA | | |
| | | | ±20% | | C5750X7T2W105M250KA | | |
| 1.5μF | 5750 | 2.00±0.20 | ±10% | | | | C5750X7T2E155K200KA |
| | | | ±20% | | | | C5750X7T2E155M200KA |
| 2.2μF | 5750 | 2.50±0.30 | ±10% | | | | C5750X7T2E225K250KA |
| | | | ±20% | | | | C5750X7T2E225M250KA |

■ 灰色涂层的品名为不推荐用于新设计中的产品。

▲ 为了能够更加正确、安全地使用产品，请务必索取能进一步确认详细特性、规格的采购规格书。
 记载内容可能因为产品改良等原因不经预告而更改，恕不另行通知。

X-ON Electronics

Largest Supplier of Electrical and Electronic Components

Click to view similar products for [Multilayer Ceramic Capacitors MLCC - SMD/SMT category:](#)

Click to view products by [TDK manufacturer:](#)

Other Similar products are found below :

[M39014/02-1225V](#) [M39014/22-0631](#) [D55342E07B523DR-T/R](#) [NCA1206X7R103K50TRPF](#) [NCA1206X7R104K16TRPF](#) [NIN-FB391JTRF](#)
[NIN-FC2R7JTRF](#) [NMC0201X5R474K4TRPF](#) [NMC0402NPO220J50TRPF](#) [NMC0402X5R105K6.3TRPF](#) [NMC0402X5R224K6.3TRPF](#)
[NMC0402X7R103J25TRPF](#) [NMC0402X7R153K16TRPF](#) [NMC0603NPO1R8C50TRPF](#) [NMC0603NPO201J50TRPF](#)
[NMC0603NPO330G50TRPF](#) [NMC0603X5R475M6.3TRPF](#) [NMC0805NPO270J50TRPF](#) [NMC0805NPO820J50TRPF](#)
[NMC0805X7R224K16TRPLPF](#) [NMC0805X7R224K25TRPF](#) [NMC1206X7R102K50TRPF](#) [NMC1206X7R106K10TRPLPF](#)
[NMC1206X7R475K10TRPLPF](#) [NMC-H0805X7R472K250TRPF](#) [NMC-L0402NPO7R0C50TRPF](#) [NMC-L0603NPO2R2B50TRPF](#) [NMC-](#)
[Q0402NPO8R2D200TRPF](#) [C1206C101J1GAC](#) [C1608C0G2A221J](#) [C1608X7R1E334K](#) [C2012C0G2A472J](#) [2220J2K00562KXT](#)
[1812J2K00332KXT](#) [CDR31BX103AKWR](#) [CDR33BX104AKUR](#) [CDR33BX683AKUS](#) [CGA2B2C0G1H010C](#) [CGA2B2C0G1H040C](#)
[CGA2B2C0G1H050C](#) [CGA2B2C0G1H060D](#) [CGA2B2C0G1H070D](#) [CGA2B2C0G1H120J](#) [CGA2B2C0G1H151J](#)
[CGA2B2C0G1H181JT0Y0F](#) [CGA2B2C0G1H1R5C](#) [CGA2B2C0G1H2R2C](#) [CGA2B2C0G1H390J](#) [CGA2B2C0G1H391J](#)
[CGA2B2C0G1H3R3C](#)