

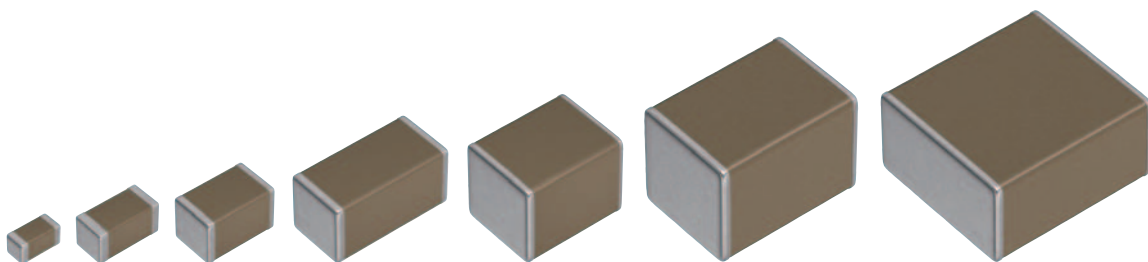
MULTILAYER CERAMIC CHIP CAPACITORS

Commercial grade, high temperature application

C series

C1005	[0402 inch]
C1608	[0603 inch]
C2012	[0805 inch]
C3216	[1206 inch]
C3225	[1210 inch]
C4532	[1812 inch]
C5750	[2220 inch]

* Dimensions code: JIS[EIA]



REMINDERS FOR USING THESE PRODUCTS

Before using these products, be sure to request the delivery specifications.

SAFETY REMINDERS

Please pay sufficient attention to the warnings for safe designing when using this products.

 **REMINDERS**

1. The products listed on this catalog are intended for use in general electronic equipment (AV equipment, telecommunications equipment, home appliances, amusement equipment, computer equipment, personal equipment, office equipment, measurement equipment, industrial robots) under a normal operation and use condition.

The products are not designed or warranted to meet the requirements of the applications listed below, whose performance and/or quality require a more stringent level of safety or reliability, or whose failure, malfunction or trouble could cause serious damage to society, person or property.

If you intend to use the products in the applications listed below or if you have special requirements exceeding the range or conditions set forth in the each catalog, please contact us.

- | | |
|--|--|
| (1) Aerospace/aviation equipment | (8) Public information-processing equipment |
| (2) Transportation equipment (cars, electric trains, ships, etc.) | (9) Military equipment |
| (3) Medical equipment (excepting Pharmaceutical Affairs Law classification Class1,2) | (10) Electric heating apparatus, burning equipment |
| (4) Power-generation control equipment | (11) Disaster prevention/crime prevention equipment |
| (5) Atomic energy-related equipment | (12) Safety equipment |
| (6) Seabed equipment | (13) Other applications that are not considered general-purpose applications |
| (7) Transportation control equipment | |

When designing your equipment even for general-purpose applications, you are kindly requested to take into consideration securing protection circuit/device or providing backup circuits in your equipment.

- We may modify products or discontinue production of a product listed in this catalog without prior notification.
- We provide "Delivery Specification" that explain precautions for the specifications and safety of each product listed in this catalog. We strongly recommend that you exchange these delivery specifications with customers that use one of these products.
- If you plan to export a product listed in this catalog, keep in mind that it may be a restricted item according to the "Foreign Exchange and Foreign Trade Control Law". In such cases, it is necessary to acquire export permission in harmony with this law.
- Any reproduction or transferring of the contents of this catalog is prohibited without prior permission from our company.
- We are not responsible for problems that occur related to the intellectual property rights or other rights of our company or a third party when you use a product listed in this catalog. We do not grant license of these rights.
- This catalog only applies to products purchased through our company or one of our company's official agencies. This catalog does not apply to products that are purchased through other third parties.

Notice: Effective January 2013, TDK will use a new catalog number which adds product thickness and packaging specification detail. This new catalog number should be referenced on all catalog orders going forward, and is not applicable for OEM part number orders.

Please be aware the last five digits of the catalog number will differ from the item description (internal control number) on the product label.

Contact your local TDK Sales representative for more information.

(Example)

Catalog issued date	Catalog number	Item description (on delivery label)
Prior to January 2013	C1608C0G1E103J(080AA)	C1608C0G1E103JT000N
January 2013 and later	C1608C0G1E103J080AA	C1608C0G1E103JT000N

C series

High temperature application



Type: C1005 [0402 inch], C1608 [0603 inch], C2012 [0805 inch],
C3216 [1206 inch], C3225 [1210 inch], C4532 [1812 inch],
C5750 [2220 inch]

SERIES OVERVIEW

High temperature application C series, commercial grade of TDK's multilayer ceramic chip capacitor, is a product whose maximum operating temperature is 150°C. The capacitance range is up to 22μF.

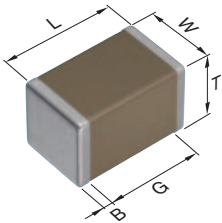
FEATURES

- Operating temperature range: -55 to +150°C.
- NP0 type which has excellent stable temperature and DC-bias characteristics is available. (NP0: 0±30ppm/°C, -55 to +150°C)

APPLICATION

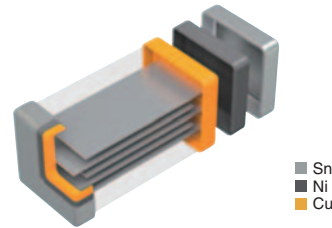
- Decoupling, smoothing, snubber and resonant circuits of equipment operating in a high-temperature environment
- Peripheral circuits of high-temperature devices such as IGBT, SiC, GaN

SHAPE & DIMENSIONS



L	Body length
W	Body width
T	Body height
B	Terminal width
G	Terminal spacing

PRODUCT STRUCTURE



The structure which multiple sheets of dielectric and conductive material are layered alternately. The superior mechanical strength and reliability are realized by the monolithic and simple structure.

Type	Dimensions in mm				
	L	W	T	B	G
C1005	1.00±0.05	0.50±0.05	0.50±0.05	0.10 min.	0.30 min.
C1608	1.60±0.10	0.80±0.10	0.80±0.10	0.20 min.	0.30 min.
C2012	2.00±0.20	1.25±0.20	1.25±0.20	0.20 min.	0.50 min.
C3216	3.20±0.20	1.60±0.20	1.60±0.20	0.20 min.	1.00 min.
C3225	3.20±0.40	2.50±0.30	2.50±0.30	0.20 min.	—
C4532	4.50±0.40	3.20±0.40	3.20±0.30	0.20 min.	—
C5750	5.70±0.40	5.00±0.40	2.80±0.30	0.20 min.	—

*Dimensional tolerances are typical values.

CATALOG NUMBER CONSTRUCTION

C	3225	X8L	1C	226	M	250	A	C
(1)	(2)	(3)	(4)	(5)	(6)	(7)	(8)	(9)

(1) Series

(2) Dimensions L x W (mm)

Code	EIA	Length	Width	Terminal width
C1005	CC0402	1.00	0.50	0.10
C1608	CC0603	1.60	0.80	0.20
C2012	CC0805	2.00	1.25	0.20
C3216	CC1206	3.20	1.60	0.20
C3225	CC1210	3.20	2.50	0.20
C4532	CC1812	4.50	3.20	0.20
C5750	CC2220	5.70	5.00	0.20

(3) Temperature characteristics

Temperature characteristics	Temperature coefficient or capacitance change	Temperature range
NPO	0±30ppm/°C	-55 to +150°C
X8R	±15%	-55 to +150°C
X8L	+15,-40%	-55 to +150°C

(4) Rated voltage (DC)

Code	Voltage (DC)
0G	4V
0J	6.3V
1A	10V
1C	16V
1E	25V
1H	50V
2A	100V
2E	250V
2W	450V
2J	630V

(5) Nominal capacitance (pF)

The capacitance is expressed in three digit codes and in units of pico Farads (pF). The first and second digits identify the first and second significant figures of the capacitance. The third digit identifies the multiplier. R designates a decimal point.

(Example)0R5 = 0.5pF
 101 = 100pF
 225 = 2,200,000pF = 2.2μF

(6) Capacitance tolerance

Code	Tolerance
C	±0.25pF
D	±0.50pF
J	±5%
K	±10%
M	±20%

(7) Thickness

Code	Thickness
050	0.50mm
060	0.60mm
080	0.80mm
085	0.85mm
115	1.15mm
125	1.25mm
160	1.60mm
200	2.00mm
230	2.30mm
250	2.50mm
280	2.80mm
320	3.20mm

(8) Packaging style

Code	Style
A	178mm reel, 4mm pitch
B	178mm reel, 2mm pitch
K	178mm reel, 8mm pitch



(9) Special reserved code

Code	Description
A,B,C,N	TDK internal code

Capacitance range chart

C1005 [0402 inch]


Capacitance		NP0		X8R			
(pF)	Code	2A (100V)	1H (50V)	2A (100V)	1H (50V)	1E (25V)	1C (16V)
1	010						
1.5	1R5						
2	020						
2.2	2R2						
3	030						
3.3	3R3						
4	040						
4.7	4R7						
5	050						
6	060						
6.8	6R8						
7	070						
8	080						
9	090						
10	100						
12	120						
15	150						
18	180						
22	220						
27	270						
33	330						
39	390						
47	470						
56	560						
68	680						
82	820						
100	101						
120	121						
150	151						
180	181						
220	221						
270	271						
330	331						
390	391						
470	471						
560	561						
680	681						
820	821						
1,000	102						
1,500	152						
2,200	222						
3,300	332						
4,700	472						
6,800	682						
10,000	103						
15,000	153						
22,000	223						
33,000	333						
47,000	473						


Standard thickness  0.50mm Background gray: These products are not recommended for new designs. For details such as the catalog numbers, please refer to the capacitance range table on page 11 and after.

Capacitance range chart

C1608 [0603 inch]

Capacitance		NP0			X8R		
(pF)	Code	2E (250V)	2A (100V)	1H (50V)	2A (100V)	1H (50V)	1E (25V)
1	010						
1.5	1R5						
2	020						
2.2	2R2						
3	030						
3.3	3R3						
4	040						
4.7	4R7						
5	050						
6	060						
6.8	6R8						
7	070						
8	080						
9	090						
10	100						
12	120						
15	150						
18	180						
22	220						
27	270						
33	330						
39	390						
47	470						
56	560						
68	680						
82	820						
100	101						
120	121						
150	151						
180	181						
220	221						
270	271						
330	331						
390	391						
470	471						
560	561						
680	681						
820	821						
1,000	102						
1,200	122						
1,500	152						
1,800	182						
2,200	222						
2,700	272						
3,300	332						
3,900	392						
4,700	472						
5,600	562						
6,800	682						
8,200	822						
10,000	103						
15,000	153						
22,000	223						
33,000	333						
47,000	473						
68,000	683						

Standard thickness  0.80mm Background gray: These products are not recommended for new designs. For details such as the catalog numbers, please refer to the capacitance range table on page 11 and after.

 Please be sure to request delivery specifications that provide further details on the features and specifications of the products for proper and safe use.
Please note that the contents may change without any prior notice due to reasons such as upgrading.

Capacitance range chart

C1608 [0603 inch]

Capacitance		X8R			X8L	
(pF)	Code	1H (50V)	1E (25V)	1C (16V)	1C (16V)	0J (6.3V)
100,000	104	■	■			
150,000	154		■			
220,000	224					
330,000	334		■	■		
470,000	474					
680,000	684				■	
1,000,000	105				■	
1,500,000	155					■
2,200,000	225					■

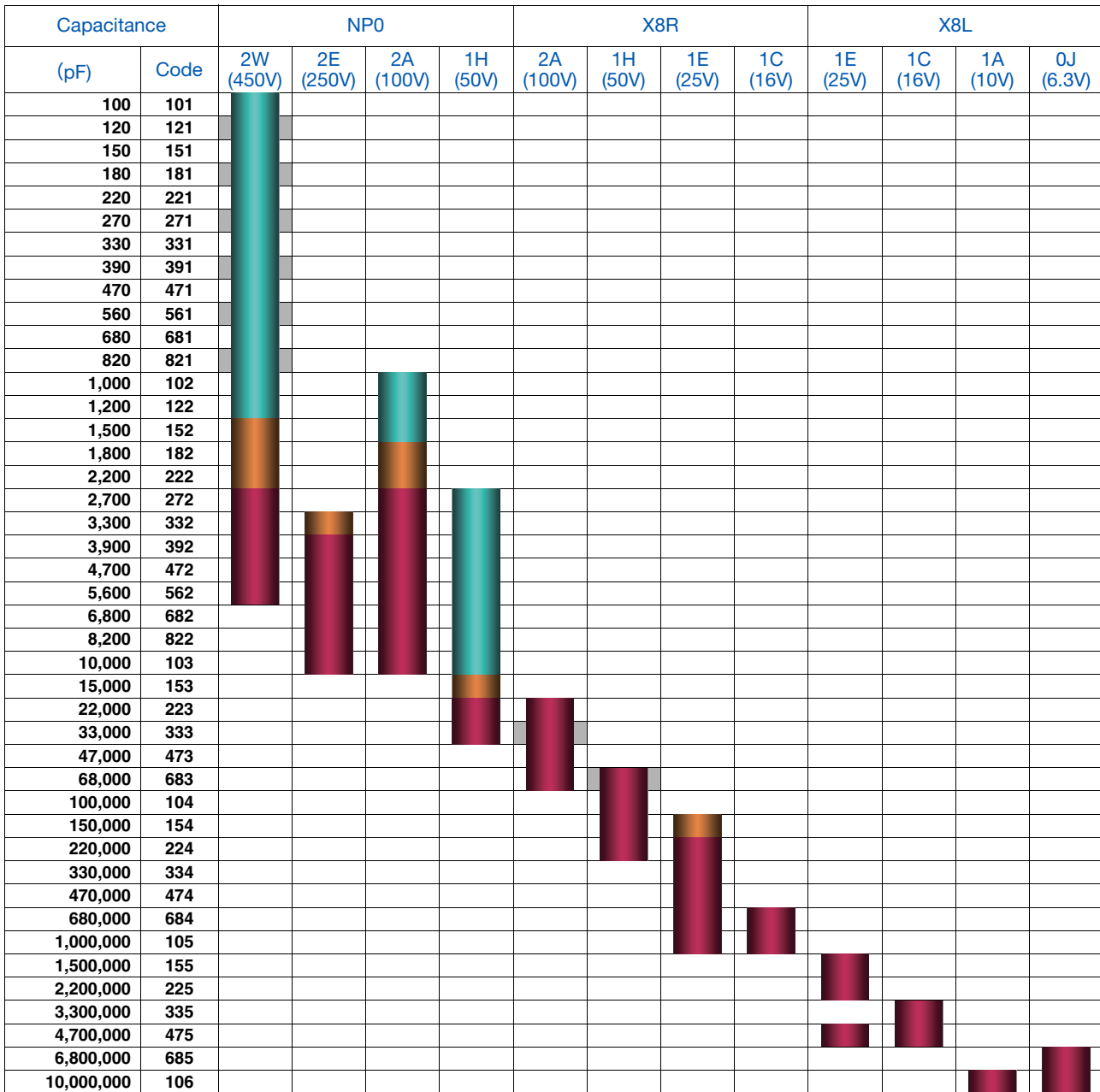
Standard thickness ■ 0.80mm

■ For details such as the catalog numbers, please refer to the capacitance range table on page 11 and after.

MULTILAYER CERAMIC CHIP CAPACITORS TDK

Capacitance range chart

C2012 [0805 inch]



Standard thickness █ 0.60 mm █ 0.85 mm █ 1.25 mm

█ Background gray: These products are not recommended for new designs.

█ For details such as the catalog numbers, please refer to the capacitance range table on page 11 and after.

⚠ Please be sure to request delivery specifications that provide further details on the features and specifications of the products for proper and safe use. Please note that the contents may change without any prior notice due to reasons such as upgrading.

MULTILAYER CERAMIC CHIP CAPACITORS TDK

Capacitance range chart

C3216 [1206 inch]

Capacitance		NPO					X8R				X8L			
(pF)	Code	2J (630V)	2W (450V)	2E (250V)	2A (100V)	1H (50V)	2A (100V)	1H (50V)	1E (25V)	1C (16V)	1H (50V)	1E (25V)	1C (16V)	0G (4V)
3,900	392	█			█									
4,700	472	█			█	█								
5,600	562	█			█	█								
6,800	682	█	█		█	█								
8,200	822	█	█		█	█								
10,000	103	█	█		█	█								
15,000	153		█	█	█	█								
22,000	223			█	█	█								
33,000	333				█	█	█							
47,000	473				█	█	█							
68,000	683				█	█	█							
100,000	104				█	█	█							
150,000	154				█	█	█							
220,000	224				█	█	█							
330,000	334				█	█	█							
470,000	474				█	█	█							
680,000	684				█	█	█							
1,000,000	105				█	█	█							
1,500,000	155				█	█	█			█				
2,200,000	225				█	█	█			█				
3,300,000	335				█	█	█			█				
4,700,000	475				█	█	█			█				
6,800,000	685				█	█	█			█				
10,000,000	106				█	█	█			█				
15,000,000	156				█	█	█			█				
22,000,000	226				█	█	█			█			█	

Standard thickness █ 0.60 mm █ 0.85 mm █ 1.15 mm █ 1.60 mm

█ Background gray: These products are not recommended for new designs.

█ For details such as the catalog numbers, please refer to the capacitance range table on page 11 and after.

Capacitance range chart

C3225 [1210 inch]

Capacitance		NPO				X8R			X8L	
(pF)	Code	2J (630V)	2W (450V)	2E (250V)	2A (100V)	2A (100V)	1E (25V)	1C (16V)	1H (50V)	1C (16V)
8,200	822	█								
10,000	103	█								
15,000	153	█								
22,000	223	█	█							
33,000	333	█	█							
47,000	473	█	█							
68,000	683			█	█					
470,000	474				█	█				
680,000	684				█	█				
1,500,000	155				█	█				
2,200,000	225				█	█				
3,300,000	335				█	█			█	
4,700,000	475				█	█			█	
6,800,000	685				█	█			█	
10,000,000	106				█	█			█	
15,000,000	156				█	█			█	
22,000,000	226				█	█			█	█

Standard thickness █ 1.25 mm █ 1.60 mm █ 2.00 mm █ 2.30 mm █ 2.50 mm

█ For details such as the catalog numbers, please refer to the capacitance range table on page 11 and after.

⚠ Please be sure to request delivery specifications that provide further details on the features and specifications of the products for proper and safe use. Please note that the contents may change without any prior notice due to reasons such as upgrading.

Capacitance range chart

C4532 [1812 inch]

Capacitance		NPO		
(pF)	Code	2J (630V)	2W (450V)	2E (250V)
33,000	333			
47,000	473			
68,000	683			
100,000	104			

Standard thickness 2.00 mm 2.30 mm 3.20 mm

■ For details such as the catalog numbers, please refer to the capacitance range table on page 11 and after.

Capacitance range chart

C5750 [2220 inch]

Capacitance		NPO		
(pF)	Code	2W (450V)	2E (250V)	2A (100V)
100,000	104			
150,000	154			

Standard thickness 2.30 mm 2.80 mm

■ For details such as the catalog numbers, please refer to the capacitance range table on page 11 and after.

⚠ Please be sure to request delivery specifications that provide further details on the features and specifications of the products for proper and safe use. Please note that the contents may change without any prior notice due to reasons such as upgrading.

MULTILAYER CERAMIC CHIP CAPACITORS



Capacitance range table

Temperature characteristic: NP0 (–55 to +150°C, 0±30ppm/°C)

Capacitance	Dimensions	Thickness (mm)	Capacitance tolerance	Catalog number		
				Rated voltage Edc: 450V	Rated voltage Edc: 100V	Rated voltage Edc: 50V
1pF	1005	0.50±0.05	±0.25pF			C1005NP01H010C050BA
	1608	0.80±0.10	±0.25pF		C1608NP02A010C080AA	C1608NP01H010C080AA
1.5pF	1005	0.50±0.05	±0.25pF			C1005NP01H1R5C050BA
	1608	0.80±0.10	±0.25pF		C1608NP02A1R5C080AA	C1608NP01H1R5C080AA
2pF	1005	0.50±0.05	±0.25pF			C1005NP01H020C050BA
	1608	0.80±0.10	±0.25pF		C1608NP02A020C080AA	C1608NP01H020C080AA
2.2pF	1005	0.50±0.05	±0.25pF			C1005NP01H2R2C050BA
	1608	0.80±0.10	±0.25pF		C1608NP02A2R2C080AA	C1608NP01H2R2C080AA
3pF	1005	0.50±0.05	±0.25pF			C1005NP01H030C050BA
	1608	0.80±0.10	±0.25pF		C1608NP02A030C080AA	C1608NP01H030C080AA
3.3pF	1005	0.50±0.05	±0.25pF			C1005NP01H3R3C050BA
	1608	0.80±0.10	±0.25pF		C1608NP02A3R3C080AA	C1608NP01H3R3C080AA
4pF	1005	0.50±0.05	±0.25pF			C1005NP01H040C050BA
	1608	0.80±0.10	±0.25pF		C1608NP02A040C080AA	C1608NP01H040C080AA
4.7pF	1005	0.50±0.05	±0.25pF			C1005NP01H4R7C050BA
	1608	0.80±0.10	±0.25pF		C1608NP02A4R7C080AA	C1608NP01H4R7C080AA
5pF	1005	0.50±0.05	±0.25pF			C1005NP01H050C050BA
	1608	0.80±0.10	±0.25pF		C1608NP02A050C080AA	C1608NP01H050C080AA
6pF	1005	0.50±0.05	±0.50pF			C1005NP01H060D050BA
	1608	0.80±0.10	±0.50pF		C1608NP02A060D080AA	C1608NP01H060D080AA
6.8pF	1005	0.50±0.05	±0.50pF			C1005NP01H6R8D050BA
	1608	0.80±0.10	±0.50pF		C1608NP02A6R8D080AA	C1608NP01H6R8D080AA
7pF	1005	0.50±0.05	±0.50pF			C1005NP01H070D050BA
	1608	0.80±0.10	±0.50pF		C1608NP02A070D080AA	C1608NP01H070D080AA
8pF	1005	0.50±0.05	±0.50pF			C1005NP01H080D050BA
	1608	0.80±0.10	±0.50pF		C1608NP02A080D080AA	C1608NP01H080D080AA
9pF	1005	0.50±0.05	±0.50pF			C1005NP01H090D050BA
	1608	0.80±0.10	±0.50pF		C1608NP02A090D080AA	C1608NP01H090D080AA
10pF	1005	0.50±0.05	±0.50pF			C1005NP01H100D050BA
	1608	0.80±0.10	±0.50pF		C1608NP02A100D080AA	C1608NP01H100D080AA
12pF	1005	0.50±0.05	±5%			C1005NP01H120J050BA
	1608	0.80±0.10	±5%		C1608NP02A120J080AA	C1608NP01H120J080AA
15pF	1005	0.50±0.05	±5%			C1005NP01H150J050BA
	1608	0.80±0.10	±5%		C1608NP02A150J080AA	C1608NP01H150J080AA
18pF	1005	0.50±0.05	±5%			C1005NP01H180J050BA
	1608	0.80±0.10	±5%		C1608NP02A180J080AA	C1608NP01H180J080AA
22pF	1005	0.50±0.05	±5%			C1005NP01H220J050BA
	1608	0.80±0.10	±5%		C1608NP02A220J080AA	C1608NP01H220J080AA
27pF	1005	0.50±0.05	±5%			C1005NP01H270J050BA
	1608	0.80±0.10	±5%		C1608NP02A270J080AA	C1608NP01H270J080AA
33pF	1005	0.50±0.05	±5%			C1005NP01H330J050BA
	1608	0.80±0.10	±5%		C1608NP02A330J080AA	C1608NP01H330J080AA
39pF	1005	0.50±0.05	±5%			C1005NP01H390J050BA
	1608	0.80±0.10	±5%		C1608NP02A390J080AA	C1608NP01H390J080AA
47pF	1005	0.50±0.05	±5%			C1005NP01H470J050BA
	1608	0.80±0.10	±5%		C1608NP02A470J080AA	C1608NP01H470J080AA
56pF	1005	0.50±0.05	±5%			C1005NP01H560J050BA
	1608	0.80±0.10	±5%		C1608NP02A560J080AA	C1608NP01H560J080AA
68pF	1005	0.50±0.05	±5%			C1005NP01H680J050BA
	1608	0.80±0.10	±5%		C1608NP02A680J080AA	C1608NP01H680J080AA
82pF	1005	0.50±0.05	±5%			C1005NP01H820J050BA
	1608	0.80±0.10	±5%		C1608NP02A820J080AA	C1608NP01H820J080AA
100pF	1005	0.50±0.05	±5%			C1005NP02A101J050BA
	1608	0.80±0.10	±5%		C1608NP02A101J080AA	C1608NP01H101J080AA
120pF	2012	0.60±0.15	±5%	C2012NP02W101J060AA		
	1005	0.50±0.05	±5%		C1005NP02A121J050BA	C1005NP01H121J050BA
	1608	0.80±0.10	±5%		C1608NP02A121J080AA	C1608NP01H121J080AA
150pF	2012	0.60±0.15	±5%	C2012NP02W121J060AA		
	1005	0.50±0.05	±5%		C1005NP02A151J050BA	C1005NP01H151J050BA
	1608	0.80±0.10	±5%		C1608NP02A151J080AA	C1608NP01H151J080AA
180pF	2012	0.60±0.15	±5%	C2012NP02W151J060AA		
	1005	0.50±0.05	±5%		C1005NP02A181J050BA	C1005NP01H181J050BA
	1608	0.80±0.10	±5%		C1608NP02A181J080AA	C1608NP01H181J080AA
220pF	2012	0.60±0.15	±5%	C2012NP02W181J060AA		
	1005	0.50±0.05	±5%		C1005NP02A221J050BA	C1005NP01H221J050BA
	1608	0.80±0.10	±5%		C1608NP02A221J080AA	C1608NP01H221J080AA
	2012	0.60±0.15	±5%	C2012NP02W221J060AA		

■ Gray items: These products are not recommended for new designs.

⚠ Please be sure to request delivery specifications that provide further details on the features and specifications of the products for proper and safe use. Please note that the contents may change without any prior notice due to reasons such as upgrading.

MULTILAYER CERAMIC CHIP CAPACITORS

Capacitance range table

Temperature characteristic: NP0 (−55 to +150°C, 0±30ppm/°C)

Capacitance	Dimensions	Thickness (mm)	Capacitance tolerance	Catalog number				
				Rated voltage Edc: 630V	Rated voltage Edc: 450V	Rated voltage Edc: 250V	Rated voltage Edc: 100V	Rated voltage Edc: 50V
270pF	1005	0.50±0.05	±5%				C1005NP02A271J050BA	C1005NP01H271J050BA
	1608	0.80±0.10	±5%				C1608NP02A271J080AA	C1608NP01H271J080AA
	2012	0.60±0.15	±5%		C2012NP02W271J060AA			
330pF	1005	0.50±0.05	±5%				C1005NP02A331J050BA	C1005NP01H331J050BA
	1608	0.80±0.10	±5%				C1608NP02A331J080AA	C1608NP01H331J080AA
	2012	0.60±0.15	±5%		C2012NP02W331J060AA			
390pF	1005	0.50±0.05	±5%				C1005NP02A391J050BA	C1005NP01H391J050BA
	1608	0.80±0.10	±5%				C1608NP02A391J080AA	C1608NP01H391J080AA
	2012	0.60±0.15	±5%		C2012NP02W391J060AA			
470pF	1005	0.50±0.05	±5%					C1005NP01H471J050BA
	1608	0.80±0.10	±5%				C1005NP02A471J050BA	C1608NP01H471J080AA
	2012	0.60±0.15	±5%		C2012NP02W471J060AA			
560pF	1005	0.50±0.05	±5%					C1005NP01H561J050BA
	1608	0.80±0.10	±5%				C1608NP02A561J080AA	C1608NP01H561J080AA
	2012	0.60±0.15	±5%		C2012NP02W561J060AA			
680pF	1005	0.50±0.05	±5%					C1005NP01H681J050BA
	1608	0.80±0.10	±5%				C1608NP02A681J080AA	C1608NP01H681J080AA
	2012	0.60±0.15	±5%		C2012NP02W681J060AA			
820pF	1005	0.50±0.05	±5%					C1005NP01H821J050BA
	1608	0.80±0.10	±5%			C1608NP02E821J080AA	C1608NP02A821J080AA	C1608NP01H821J080AA
	2012	0.60±0.15	±5%		C2012NP02W821J060AA			
1nF	1005	0.50±0.05	±5%					C1005NP01H102J050BA
	1608	0.80±0.10	±5%			C1608NP02E102J080AA	C1608NP02A102J080AA	C1608NP01H102J080AA
	2012	0.60±0.15	±5%		C2012NP02W102J060AA		C2012NP02A102J060AA	
1.2nF	1608	0.80±0.10	±5%			C1608NP02E122J080AA	C1608NP02A122J080AA	C1608NP01H122J080AA
	2012	0.60±0.15	±5%		C2012NP02W122J060AA		C2012NP02A122J060AA	
	1608	0.80±0.10	±5%			C1608NP02E152J080AA	C1608NP02A152J080AA	C1608NP01H152J080AA
1.5nF	2012	0.60±0.15	±5%				C2012NP02A152J060AA	
		0.85±0.15	±5%		C2012NP02W152J085AA			
	1608	0.80±0.10	±5%			C1608NP02E182J080AA	C1608NP02A182J080AA	C1608NP01H182J080AA
1.8nF	2012	0.85±0.15	±5%		C2012NP02W182J085AA			
		0.80±0.10	±5%				C1608NP02A222J080AA	C1608NP01H222J080AA
	2012	0.85±0.15	±5%		C2012NP02W222J085AA		C2012NP02A222J085AA	
2.2nF	1608	0.80±0.20	±5%				C1608NP02E222J080AA	C1608NP01H222J080AA
	2012	0.80±0.10	±5%					C1608NP01H272J080AA
		0.80±0.20	±5%					C2012NP01H272J060AA
2.7nF	2012	0.60±0.15	±5%		C2012NP02W272J125AA		C2012NP02A272J125AA	
		1.25±0.20	±5%					C1608NP01H332J080AA
	1608	0.80±0.10	±5%				C1608NP02A332J080AA	
3.3nF		0.80±0.20	±5%					C2012NP01H332J060AA
	2012	0.60±0.15	±5%					C2012NP01H332J080AA
		0.85±0.15	±5%			C2012NP02E332J085AA		
3.9nF		1.25±0.20	±5%		C2012NP02W332J125AA		C2012NP02A332J125AA	
	1608	0.80±0.10	±5%					C1608NP01H392J080AA
	2012	0.60±0.15	±5%					C2012NP01H392J060AA
3.9nF	2012	1.25±0.20	±5%		C2012NP02W392J125AA	C2012NP02E392J125AA	C2012NP02A392J125AA	
	3216	0.60±0.15	±5%				C3216NP02A392J060AA	
		0.85±0.15	±5%		C3216NP02J392J085AA			
4.7nF	1608	0.80±0.10	±5%					C1608NP01H472J080AA
	2012	0.60±0.15	±5%					C2012NP01H472J060AA
		1.25±0.20	±5%		C2012NP02W472J125AA	C2012NP02E472J125AA	C2012NP02A472J125AA	
4.7nF	3216	0.60±0.15	±5%					C3216NP01H472J060AA
		0.85±0.15	±5%		C3216NP02J472J085AA		C3216NP02A472J085AA	
	1608	0.80±0.10	±5%					C1608NP01H562J080AA
5.6nF	2012	0.60±0.15	±5%					C2012NP01H562J060AA
		1.25±0.20	±5%		C2012NP02W562J125AA	C2012NP02E562J125AA	C2012NP02A562J125AA	
	3216	0.60±0.15	±5%					C3216NP01H562J060AA
5.6nF		0.85±0.15	±5%				C3216NP02A562J085AA	
		1.15±0.15	±5%		C3216NP02J562J115AA			
	1608	0.80±0.10	±5%					C1608NP01H682J080AA
6.8nF	2012	0.60±0.15	±5%					C2012NP01H682J060AA
		1.25±0.20	±5%			C2012NP02E682J125AA	C2012NP02A682J125AA	
	3216	0.60±0.15	±5%					C3216NP01H682J060AA
	1.15±0.15	±5%		C3216NP02J682J115AA	C3216NP02W682J115AA	C3216NP02A682J115AA		

■ Gray items: These products are not recommended for new designs.

⚠ Please be sure to request delivery specifications that provide further details on the features and specifications of the products for proper and safe use. Please note that the contents may change without any prior notice due to reasons such as upgrading.

MULTILAYER CERAMIC CHIP CAPACITORS



Capacitance range table

Temperature characteristic: NP0 (-55 to +150°C, 0±30ppm/°C)

Capacitance	Dimensions	Thickness (mm)	Capacitance tolerance	Catalog number				
				Rated voltage Edc: 630V	Rated voltage Edc: 450V	Rated voltage Edc: 250V	Rated voltage Edc: 100V	Rated voltage Edc: 50V
8.2nF	1608	0.80±0.10	±5%					C1608NP01H822J080AA
		0.60±0.15	±5%					C2012NP01H822J060AA
	2012	1.25±0.20	±5%			C2012NP02E822J125AA	C2012NP02A822J125AA	
		0.60±0.15	±5%					C3216NP01H822J060AA
		1.15±0.15	±5%		C3216NP02W822J115AA		C3216NP02A822J115AA	
3216	1.60±0.20	±5%	C3216NP02J822J160AA					
	1.25±0.20	±5%	C3225NP02J822J125AA					
10nF	1608	0.80±0.10	±5%					C1608NP01H103J080AA
		0.60±0.15	±5%					C2012NP01H103J060AA
	2012	1.25±0.20	±5%			C2012NP02E103J125AA	C2012NP02A103J125AA	
		0.60±0.15	±5%					C3216NP01H103J060AA
		1.15±0.15	±5%		C3216NP02E103J115AA	C3216NP02A103J115AA		
3216	1.60±0.20	±5%	C3216NP02J103J160AA	C3216NP02W103J160AA				
	1.25±0.20	±5%	C3225NP02J103J125AA					
15nF	2012	0.85±0.15	±5%					C2012NP01H153J085AA
		0.60±0.15	±5%					C3216NP01H153J060AA
	3216	1.15±0.15	±5%				C3216NP02A153J115AA	
		1.60+0.30,-0.10	±5%		C3216NP02W153J160AA			
		1.60±0.20	±5%			C3216NP02E153J160AA		
3225	1.60±0.20	±5%	C3225NP02J153J160AA					
22nF	2012	1.25±0.20	±5%					C2012NP01H223J125AA
		0.60±0.15	±5%					C3216NP01H223J060AA
	3216	1.60+0.30,-0.10	±5%			C3216NP02E223J160AA		
		1.60±0.20	±5%				C3216NP02A223J160AA	
		1.60±0.20	±5%			C3225NP02E223J160AA		
3225	2.30±0.20	±5%	C3225NP02J223J230AA	C3225NP02W223J230AA				
33nF	2012	1.25±0.20	±5%					C2012NP01H333J125AA
		0.85±0.15	±5%					C3216NP01H333J085AA
	3216	1.60+0.30,-0.10	±5%				C3216NP02A333J160AA	
		2.30±0.20	±5%			C3225NP02E333J230AA		
		2.50±0.30	±5%	C3225NP02J333J250AA	C3225NP02W333J250AA			
4532	2.00±0.20	±5%	C4532NP02J333J200KA					
47nF	3216	1.15±0.15	±5%					C3216NP01H473J115AA
		2.50±0.30	±5%			C3225NP02E473J250AA		
	4532	2.30±0.20	±5%		C4532NP02W473J230KA			
		3.20±0.30	±5%	C4532NP02J473J320KA				
68nF	3216	1.60±0.20	±5%					C3216NP01H683J160AA
		2.30±0.20	±5%				C3225NP02A683J230AA	
	4532	2.30±0.20	±5%			C4532NP02E683J230KN		
		3.20±0.30	±5%		C4532NP02W683J320KA			
100nF	3216	1.60±0.20	±5%					C3216NP01H104J160AA
		4532	3.20±0.30	±5%			C4532NP02E104J320KN	
	5750	2.80±0.30	±5%		C5750NP02W104J280KA			
150nF	5750	2.30±0.20	±5%			C5750NP02E154J230KN	C5750NP02A154J230KA	

■ Gray items: These products are not recommended for new designs.

MULTILAYER CERAMIC CHIP CAPACITORS



Capacitance range table

Temperature characteristic: X8R (-55 to +150°C, ±15%)

Capacitance	Dimensions	Thickness (mm)	Capacitance tolerance	Catalog number			
				Rated voltage Edc: 100V	Rated voltage Edc: 50V	Rated voltage Edc: 25V	Rated voltage Edc: 16V
150pF	1005	0.50±0.05	±10%	C1005X8R2A151K050BA	C1005X8R1H151K050BA		
			±20%	C1005X8R2A151M050BA	C1005X8R1H151M050BA		
220pF	1005	0.50±0.05	±10%	C1005X8R2A221K050BA	C1005X8R1H221K050BA		
			±20%	C1005X8R2A221M050BA	C1005X8R1H221M050BA		
330pF	1005	0.50±0.05	±10%	C1005X8R2A331K050BA	C1005X8R1H331K050BA		
			±20%	C1005X8R2A331M050BA	C1005X8R1H331M050BA		
470pF	1005	0.50±0.05	±10%	C1005X8R2A471K050BA	C1005X8R1H471K050BA		
			±20%	C1005X8R2A471M050BA	C1005X8R1H471M050BA		
680pF	1005	0.50±0.05	±10%	C1005X8R2A681K050BA	C1005X8R1H681K050BA		
			±20%	C1005X8R2A681M050BA	C1005X8R1H681M050BA		
1nF	1005	0.50±0.05	±10%	C1005X8R2A102K050BA	C1005X8R1H102K050BA		
			±20%	C1005X8R2A102M050BA	C1005X8R1H102M050BA		
	1608	0.80±0.10	±10%	C1608X8R2A102K080AA	C1608X8R1H102K080AA		
			±20%	C1608X8R2A102M080AA	C1608X8R1H102M080AA		
1.5nF	1005	0.50±0.05	±10%	C1005X8R2A152K050BA	C1005X8R1H152K050BA		
			±20%	C1005X8R2A152M050BA	C1005X8R1H152M050BA		
	1608	0.80±0.10	±10%	C1608X8R2A152K080AA	C1608X8R1H152K080AA		
			±20%	C1608X8R2A152M080AA	C1608X8R1H152M080AA		
2.2nF	1005	0.50±0.05	±10%	C1005X8R2A222K050BA	C1005X8R1H222K050BA		
			±20%	C1005X8R2A222M050BA	C1005X8R1H222M050BA		
	1608	0.80±0.10	±10%	C1608X8R2A222K080AA	C1608X8R1H222K080AA		
			±20%	C1608X8R2A222M080AA	C1608X8R1H222M080AA		
3.3nF	1005	0.50±0.05	±10%	C1005X8R2A332K050BB	C1005X8R1H332K050BA		
			±20%	C1005X8R2A332M050BB	C1005X8R1H332M050BA		
	1608	0.80±0.10	±10%	C1608X8R2A332K080AA	C1608X8R1H332K080AA		
			±20%	C1608X8R2A332M080AA	C1608X8R1H332M080AA		
4.7nF	1005	0.50±0.05	±10%		C1005X8R1H472K050BA		
			±20%		C1005X8R1H472M050BA		
	1608	0.80±0.10	±10%	C1608X8R2A472K080AA	C1608X8R1H472K080AA		
			±20%	C1608X8R2A472M080AA	C1608X8R1H472M080AA		
6.8nF	1005	0.50±0.05	±10%		C1005X8R1H682K050BB	C1005X8R1E682K050BA	
			±20%		C1005X8R1H682M050BB	C1005X8R1E682M050BA	
	1608	0.80±0.10	±10%	C1608X8R2A682K080AA	C1608X8R1H682K080AA		
			±20%	C1608X8R2A682M080AA	C1608X8R1H682M080AA		
10nF	1005	0.50±0.05	±10%		C1005X8R1H103K050BB	C1005X8R1E103K050BA	
			±20%		C1005X8R1H103M050BB	C1005X8R1E103M050BA	
	1608	0.80±0.10	±10%	C1608X8R2A103K080AA	C1608X8R1H103K080AA		
			±20%	C1608X8R2A103M080AA	C1608X8R1H103M080AA		
15nF	1005	0.50±0.05	±10%			C1005X8R1E153K050BB	
			±20%			C1005X8R1E153M050BB	
	1608	0.80±0.10	±10%	C1608X8R2A153K080AA	C1608X8R1H153K080AA		
			±20%	C1608X8R2A153M080AA	C1608X8R1H153M080AA		
22nF	1005	0.50±0.05	±10%			C1005X8R1E223K050BB	
			±20%			C1005X8R1E223M050BB	
	1608	0.80±0.10	±10%	C1608X8R2A223K080AB	C1608X8R1H223K080AA		
			±20%	C1608X8R2A223M080AB	C1608X8R1H223M080AA		
33nF	2012	1.25±0.20	±10%	C2012X8R2A223K125AA			
			±20%	C2012X8R2A223M125AA			
	1005	0.50±0.05	±10%			C1005X8R1E333K050BC	C1005X8R1C333K050BB
			±20%			C1005X8R1E333M050BC	C1005X8R1C333M050BB
1608	0.80±0.10	±10%	C1608X8R2A333K080AB	C1608X8R1H333K080AA			
		±20%	C1608X8R2A333M080AB	C1608X8R1H333M080AA			
47nF	2012	1.25±0.20	±10%	C2012X8R2A333K125AB			
			±20%	C2012X8R2A333M125AB			
	3216	0.85±0.15	±10%	C3216X8R2A333K085AA			
			±20%	C3216X8R2A333M085AA			
68nF	1005	0.50±0.05	±10%			C1005X8R1E473K050BC	C1005X8R1C473K050BB
			±20%			C1005X8R1E473M050BC	C1005X8R1C473M050BB
	1608	0.80±0.10	±10%		C1608X8R1H473K080AA		
			±20%		C1608X8R1H473M080AA		
88nF	2012	1.25±0.20	±10%	C2012X8R2A473K125AB			
			±20%	C2012X8R2A473M125AB			
	3216	0.85±0.15	±10%	C3216X8R2A473K085AA			
			±20%	C3216X8R2A473M085AA			
100nF	1608	0.80±0.10	±10%		C1608X8R1H683K080AB	C1608X8R1E683K080AA	
			±20%		C1608X8R1H683M080AB	C1608X8R1E683M080AA	
	2012	1.25±0.20	±10%	C2012X8R2A683K125AB	C2012X8R1H683K125AA		
			±20%	C2012X8R2A683M125AB	C2012X8R1H683M125AA		
3216	1.15±0.15	±10%	C3216X8R2A683K115AA				
		±20%	C3216X8R2A683M115AA				

■ Gray items: These products are not recommended for new designs.

⚠ Please be sure to request delivery specifications that provide further details on the features and specifications of the products for proper and safe use. Please note that the contents may change without any prior notice due to reasons such as upgrading.

MULTILAYER CERAMIC CHIP CAPACITORS



Capacitance range table

Temperature characteristic: X8R (-55 to +150°C, ±15%)

Capacitance	Dimensions	Thickness (mm)	Capacitance tolerance	Catalog number				
				Rated voltage Edc: 100V	Rated voltage Edc: 50V	Rated voltage Edc: 25V	Rated voltage Edc: 16V	
100nF	1608	0.80±0.10	±10%		C1608X8R1H104K080AB	C1608X8R1E104K080AA		
			±20%		C1608X8R1H104M080AB	C1608X8R1E104M080AA		
	2012	1.25±0.20	±10%		C2012X8R1H104K125AA			
			±20%		C2012X8R1H104M125AA			
	3216	1.15±0.15	±10%	C3216X8R2A104K115AA				
			±20%	C3216X8R2A104M115AA				
150nF	1608	0.80±0.10	±10%			C1608X8R1E154K080AB		
			±20%			C1608X8R1E154M080AB		
	2012	0.85±0.15	±10%			C2012X8R1E154K085AA		
			±20%			C2012X8R1E154M085AA		
	1.25±0.20		±10%		C2012X8R1H154K125AB			
			±20%		C2012X8R1H154M125AB			
	3216	0.85±0.15	±10%		C3216X8R1H154K085AA			
			±20%		C3216X8R1H154M085AA			
		1.60±0.20		±10%	C3216X8R2A154K160AA			
				±20%	C3216X8R2A154M160AA			
220nF	1608	0.80±0.15	±10%			C1608X8R1E224K080AB		
			±20%			C1608X8R1E224M080AB		
	2012	1.25±0.20	±10%		C2012X8R1H224K125AB	C2012X8R1E224K125AA		
			±20%		C2012X8R1H224M125AB	C2012X8R1E224M125AA		
	1.15±0.15		±10%		C3216X8R1H224K115AA			
			±20%		C3216X8R1H224M115AA			
	3216	1.60±0.20	±10%	C3216X8R2A224K160AB				
			±20%	C3216X8R2A224M160AB				
330nF	1608	0.80±0.10	±10%			C1608X8R1E334K080AC	C1608X8R1C334K080AB	
			±20%			C1608X8R1E334M080AC	C1608X8R1C334M080AB	
	2012	1.25±0.20	±10%			C2012X8R1E334K125AA		
			±20%			C2012X8R1E334M125AA		
	0.85±0.15		±10%			C3216X8R1E334K085AA		
			±20%			C3216X8R1E334M085AA		
	3216	1.60±0.20	±10%	C3216X8R2A334K160AB	C3216X8R1H334K160AA			
			±20%	C3216X8R2A334M160AB	C3216X8R1H334M160AA			
	470nF	1608	0.80±0.15	±10%				C1608X8R1C474K080AB
				±20%				C1608X8R1C474M080AB
2012		1.25±0.20	±10%			C2012X8R1E474K125AB		
			±20%			C2012X8R1E474M125AB		
0.85±0.15			±10%			C3216X8R1E474K085AA		
			±20%			C3216X8R1E474M085AA		
3216		1.60±0.20	±10%		C3216X8R1H474K160AA			
			±20%		C3216X8R1H474M160AA			
3225		2.00±0.20	±10%	C3225X8R2A474K200AB				
			±20%	C3225X8R2A474M200AB				
680nF	2012	1.25±0.20	±10%			C2012X8R1E684K125AC	C2012X8R1C684K125AB	
			±20%			C2012X8R1E684M125AC	C2012X8R1C684M125AB	
	3216	1.15±0.15	±10%			C3216X8R1E684K115AA		
			±20%			C3216X8R1E684M115AA		
	1.60±0.20		±10%		C3216X8R1H684K160AB			
			±20%		C3216X8R1H684M160AB			
3225	2.50±0.30	±10%	C3225X8R2A684K250AB					
		±20%	C3225X8R2A684M250AB					
1µF	2012	1.25±0.20	±10%			C2012X8R1E105K125AC	C2012X8R1C105K125AB	
			±20%			C2012X8R1E105M125AC	C2012X8R1C105M125AB	
	3216	1.60±0.20	±10%		C3216X8R1H105K160AB	C3216X8R1E105K160AA		
			±20%		C3216X8R1H105M160AB	C3216X8R1E105M160AA		
1.5µF	3216	1.60±0.20	±10%			C3216X8R1E155K160AB		
			±20%			C3216X8R1E155M160AB		
	3225	1.60±0.20	±10%			C3225X8R1E155K160AA		
			±20%			C3225X8R1E155M160AA		
2.2µF	3216	1.60±0.20	±10%			C3216X8R1E225K160AB		
			±20%			C3216X8R1E225M160AB		
	3225	2.00±0.20	±10%			C3225X8R1E225K200AA		
			±20%			C3225X8R1E225M200AA		
3.3µF	3216	1.60±0.20	±10%			C3216X8R1E335K160AC	C3216X8R1C335K160AB	
			±20%			C3216X8R1E335M160AC	C3216X8R1C335M160AB	
	3225	2.50±0.30	±10%			C3225X8R1E335K250AA		
			±20%			C3225X8R1E335M250AA		
4.7µF	3216	1.60±0.20	±10%			C3216X8R1E475K160AC	C3216X8R1C475K160AB	
			±20%			C3216X8R1E475M160AC	C3216X8R1C475M160AB	
	3225	2.50±0.30	±10%			C3225X8R1E475K250AB		
			±20%			C3225X8R1E475M250AB		
6.8µF	3225	2.00±0.20	±10%			C3225X8R1E685K200AC	C3225X8R1C685K200AB	
			±20%			C3225X8R1E685M200AC	C3225X8R1C685M200AB	
10µF	3225	2.50±0.30	±10%			C3225X8R1E106K250AC	C3225X8R1C106K250AB	
			±20%			C3225X8R1E106M250AC	C3225X8R1C106M250AB	

⚠ Please be sure to request delivery specifications that provide further details on the features and specifications of the products for proper and safe use.
Please note that the contents may change without any prior notice due to reasons such as upgrading.

Capacitance range table

Temperature characteristic: X8L (–55 to +150°C, +15, –40%)

Capacitance	Dimensions	Thickness (mm)	Capacitance tolerance	Catalog number						
				Rated voltage Edc: 50V	Rated voltage Edc: 25V	Rated voltage Edc: 16V	Rated voltage Edc: 10V	Rated voltage Edc: 6.3V	Rated voltage Edc: 4V	
680nF	1608	0.80±0.10	±10%			C1608X8L1C684K080AC				
1µF	1608	0.80±0.10	±10%			C1608X8L1C105K080AC				
	1608	0.80±0.10	±10%					C1608X8L0J155K080AC		
1.5µF	2012	1.25±0.20	±10%		C2012X8L1E155K125AB					
	3216	1.60±0.20	±10%	C3216X8L1H155K160AC						
2.2µF	1608	0.80±0.10	±10%					C1608X8L0J225K080AC		
	2012	1.25±0.20	±10%		C2012X8L1E225K125AB					
3.3µF	3216	1.60±0.20	±10%	C3216X8L1H225K160AC						
	2012	1.25±0.20	±10%			C2012X8L1C335K125AC				
4.7µF	3216	1.60±0.30,-0.10	±10%	C3216X8L1H335K160AC						
	3225	2.00±0.20	±10%	C3225X8L1H335K200AC						
6.8µF	2012	1.25±0.25,-0.15	±10%		C2012X8L1E475K125AC					
	3216	1.25±0.20	±10%			C2012X8L1C475K125AC				
10µF	3225	2.00±0.20	±10%	C3225X8L1H475K200AC						
	2012	1.25±0.20	±10%					C2012X8L0J685K125AC		
15µF	3216	1.60±0.30,-0.10	±10%			C3216X8L1C685K160AC				
	2012	1.25±0.25,-0.15	±10%					C2012X8L1A106K125AC		
22µF	3216	1.25±0.20	±10%						C2012X8L0J106K125AC	
	3216	1.60±0.30,-0.10	±10%		C3216X8L1E106K160AC	C3216X8L1C106K160AC				
15µF	3216	1.60±0.30,-0.10	±20%							C3216X8L0G156M160AC
	3225	2.00±0.20	±20%			C3225X8L1C156M200AC				
22µF	3216	1.60±0.30,-0.10	±20%							C3216X8L0G226M160AC
	3225	2.50±0.30	±20%			C3225X8L1C226M250AC				

X-ON Electronics

Largest Supplier of Electrical and Electronic Components

Click to view similar products for [Multilayer Ceramic Capacitors MLCC - SMD/SMT](#) category:

Click to view products by [TDK](#) manufacturer:

Other Similar products are found below :

[M39014/01-1467](#) [M39014/02-1218V](#) [M39014/02-1225V](#) [M39014/02-1262V](#) [M39014/02-1301](#) [M39014/22-0631](#) [1210J5000102JCT](#)
[1210J2K00102KXT](#) [1210J5000103KXT](#) [1210J5000223KXT](#) [D55342E07B379BR-TR](#) [D55342E07B523DR-T/R](#) [1812J1K00103KXT](#)
[1812J1K00473KXT](#) [1812J2K00680JCT](#) [1812J4K00102MXT](#) [1812J5000102JCT](#) [1812J5000103JCT](#) [1812J5000682JCT](#) [NIN-FB391JTRF](#)
[NIN-FC2R7JTRF](#) [NPIS27H102MTRF](#) [C1206C101J1GAC](#) [C1608C0G1E472JT000N](#) [C2012C0G2A472J](#) [2220J2K00101JCT](#)
[KHC201E225M76N0T00](#) [LRC-LRF1206LF-01R025FTR1K](#) [1812J1K00222JCT](#) [1812J2K00102KXT](#) [1812J2K00222KXT](#)
[1812J2K00472KXT](#) [2-1622820-7-CUT-TAPE](#) [2220J3K00102KXT](#) [2225J2500824KXT](#) [CCR07CG103KM](#) [CGA2B2C0G1H010C](#)
[CGA2B2C0G1H040C](#) [CGA2B2C0G1H050C](#) [CGA2B2C0G1H060D](#) [CGA2B2C0G1H070D](#) [CGA2B2C0G1H151J](#) [CGA2B2C0G1H1R5C](#)
[CGA2B2C0G1H2R2C](#) [CGA2B2C0G1H3R3C](#) [CGA2B2C0G1H680J](#) [CGA2B2C0G1H6R8D](#) [CGA2B2X8R1H221K](#) [CGA2B2X8R1H472K](#)
[CGA3E1X7R1C474K](#)