

# MULTILAYER CERAMIC CHIP CAPACITORS

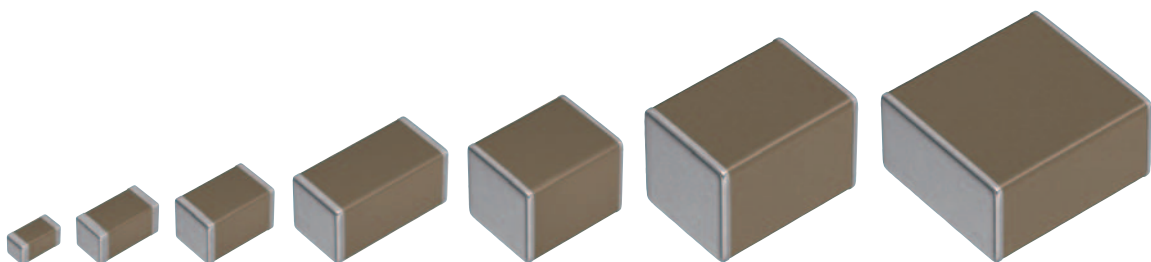
Commercial grade, mid voltage (100 to 630V)

## C series

---

<b>C1005</b>	<b>[0402 inch]</b>
<b>C1608</b>	<b>[0603 inch]</b>
<b>C2012</b>	<b>[0805 inch]</b>
<b>C3216</b>	<b>[1206 inch]</b>
<b>C3225</b>	<b>[1210 inch]</b>
<b>C4532</b>	<b>[1812 inch]</b>
<b>C5750</b>	<b>[2220 inch]</b>

\* Dimensions code: JIS[EIA]



# REMINDERS FOR USING THESE PRODUCTS

Before using these products, be sure to request the delivery specifications.

## SAFETY REMINDERS

Please pay sufficient attention to the warnings for safe designing when using this products.

 **REMINDERS**

1. The products listed on this catalog are intended for use in general electronic equipment (AV equipment, telecommunications equipment, home appliances, amusement equipment, computer equipment, personal equipment, office equipment, measurement equipment, industrial robots) under a normal operation and use condition.

The products are not designed or warranted to meet the requirements of the applications listed below, whose performance and/or quality require a more stringent level of safety or reliability, or whose failure, malfunction or trouble could cause serious damage to society, person or property.

If you intend to use the products in the applications listed below or if you have special requirements exceeding the range or conditions set forth in the each catalog, please contact us.

- |  |  |
|--|--|
| (1) Aerospace/aviation equipment   | (8) Public information-processing equipment                                  |
| (2) Transportation equipment (cars, electric trains, ships, etc.)                    | (9) Military equipment   |
| (3) Medical equipment (excepting Pharmaceutical Affairs Law classification Class1,2) | (10) Electric heating apparatus, burning equipment                           |
| (4) Power-generation control equipment   | (11) Disaster prevention/crime prevention equipment                          |
| (5) Atomic energy-related equipment  | (12) Safety equipment  |
| (6) Seabed equipment   | (13) Other applications that are not considered general-purpose applications |
| (7) Transportation control equipment   |  |

When designing your equipment even for general-purpose applications, you are kindly requested to take into consideration securing protection circuit/device or providing backup circuits in your equipment.

- We may modify products or discontinue production of a product listed in this catalog without prior notification.
- We provide "Delivery Specification" that explain precautions for the specifications and safety of each product listed in this catalog. We strongly recommend that you exchange these delivery specifications with customers that use one of these products.
- If you plan to export a product listed in this catalog, keep in mind that it may be a restricted item according to the "Foreign Exchange and Foreign Trade Control Law". In such cases, it is necessary to acquire export permission in harmony with this law.
- Any reproduction or transferring of the contents of this catalog is prohibited without prior permission from our company.
- We are not responsible for problems that occur related to the intellectual property rights or other rights of our company or a third party when you use a product listed in this catalog. We do not grant license of these rights.
- This catalog only applies to products purchased through our company or one of our company's official agencies. This catalog does not apply to products that are purchased through other third parties.

Notice: Effective January 2013, TDK will use a new catalog number which adds product thickness and packaging specification detail. This new catalog number should be referenced on all catalog orders going forward, and is not applicable for OEM part number orders.

Please be aware the last five digits of the catalog number will differ from the item description (internal control number) on the product label.

Contact your local TDK Sales representative for more information.

(Example)

Catalog issued date	Catalog number	Item description (on delivery label)
Prior to January 2013	C1608C0G1E103J(080AA)	C1608C0G1E103JT000N
January 2013 and later	C1608C0G1E103J080AA	C1608C0G1E103JT000N

# C series

## Mid voltage (100 to 630V)



Type: C1005 [0402 inch], C1608 [0603 inch], C2012 [0805 inch],  
C3216 [1206 inch], C3225 [1210 inch], C4532 [1812 inch],  
C5750 [2220 inch]

### SERIES OVERVIEW

Middle voltage C series, commercial grade of TDK's multilayer ceramic chip capacitor, is a product which has the high withstanding voltage characteristics. The lineup is voltage rating of 100V to 630V with capacitance range up to 22 $\mu$ F.

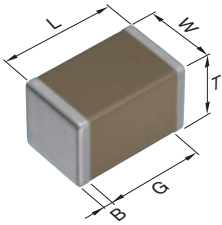
### FEATURES

- Voltage rating of 100V, 250V, 350V, 450V and 630V
- COG and CH types which have excellent stable temperature and DC-bias characteristics are available.

### APPLICATIONS

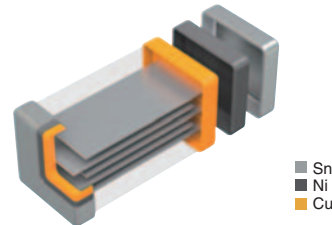
- Decoupling, smoothing, snubber and resonant circuits of high voltage circuits
- Wireless Charging units, DC-DC converter, Inverter

### SHAPE & DIMENSIONS



L	Body length
W	Body width
T	Body height
B	Terminal width
G	Terminal spacing

### PRODUCT STRUCTURE



The structure which multiple sheets of dielectric and conductive material are layered alternately. The superior mechanical strength and reliability are realized by the monolithic and simple structure.

Dimensions in mm

Type	L	W	T	B	G
C1005	1.00±0.05	0.50±0.05	0.50±0.05	0.10 min.	0.30 min.
C1608	1.60±0.10	0.80±0.10	0.80±0.10	0.20 min.	0.30 min.
C2012	2.00±0.20	1.25±0.20	1.25±0.20	0.20 min.	0.50 min.
C3216	3.20±0.20	1.60±0.20	1.60±0.20	0.20 min.	1.00 min.
C3225	3.20±0.40	2.50±0.30	2.50±0.30	0.20 min.	—
C4532	4.50±0.40	3.20±0.40	3.20±0.30	0.20 min.	—
C5750	5.70±0.40	5.00±0.40	2.80±0.30	0.20 min.	—

\*Dimensional tolerances are typical values.

**CATALOG NUMBER CONSTRUCTION**

<b>C</b>	<b>5750</b>	<b>X7S</b>	<b>2A</b>	<b>226</b>	<b>M</b>	<b>280</b>	<b>K</b>	<b>B</b>
(1)	(2)	(3)	(4)	(5)	(6)	(7)	(8)	(9)

## (1) Series

## (2) Dimensions L x W (mm)

Code	EIA	Length	Width	Terminal width
1005	CC0402	1.00	0.50	0.10
1608	CC0603	1.60	0.80	0.20
2012	CC0805	2.00	1.25	0.20
3216	CC1206	3.20	1.60	0.20
3225	CC1210	3.20	2.50	0.20
4532	CC1812	4.50	3.20	0.20
5750	CC2220	5.70	5.00	0.20

## (3) Temperature characteristics

Temperature characteristics	Temperature coefficient or capacitance change	Temperature range
CH	0±60 ppm/°C	-25 to +85°C
C0G	0±30 ppm/°C	-55 to +125°C
JB	±10%	-25 to +85°C
X5R	±15%	-55 to +85°C
X6S	±22%	-55 to +105°C
X7R	±15%	-55 to +125°C
X7S	±22%	-55 to +125°C
X7T	+22,-33%	-55 to +125°C

## (4) Rated voltage (DC)

Code	Voltage (DC)
2A	100V
2E	250V
2V	350V
2W	450V
2J	630V

## (5) Nominal capacitance (pF)

The capacitance is expressed in three digit codes and in units of pico Farads (pF). The first and second digits identify the first and second significant figures of the capacitance. The third digit identifies the multiplier. R designates a decimal point.

(Example)0R5 = 0.5pF  
 101 = 100pF  
 225 = 2,200,000pF = 2.2μF

## (6) Capacitance tolerance

Code	Tolerance
C	±0.25pF
D	±0.50pF
F	±1%
G	±2%
J	±5%
K	±10%
M	±20%

## (7) Thickness

Code	Thickness
050	0.50 mm
060	0.60 mm
080	0.80 mm
085	0.85 mm
115	1.15 mm
125	1.25 mm
130	1.30 mm
160	1.60 mm
200	2.00 mm
230	2.30 mm
250	2.50 mm
280	2.80 mm
320	3.20 mm

## (8) Packaging style

Code	Style
A	178mm reel, 4mm pitch
B	178mm reel, 2mm pitch
K	178mm reel, 8mm pitch


## (9) Special reserved code


Code	Description
A, B, C, N	TDK internal code

## Capacitance range chart

C1005 [0402 inch]

Capacitance		C0G	CH	X7S
(pF)	Code	2A (100V)	2A (100V)	2A (100V)
100	101	■	■	
120	121	■	■	
150	151	■	■	
180	181	■	■	
220	221	■	■	
270	271	■	■	
330	331	■	■	
390	391	■	■	
470	471	■	■	
560	561	■	■	
680	681	■	■	
820	821	■	■	
1,000	102			■
1,500	152			■
2,200	222			■
3,300	332			■
4,700	472			■
6,800	682			■
10,000	103			■

Standard thickness  0.50 mm
 Background gray: These products are not recommended for new designs.


 For details such as the catalog numbers, please refer to the capacitance range table on page 13 and after.


MULTILAYER CERAMIC CHIP CAPACITORS 

Capacitance range chart


C1608 [0603 inch]

Capacitance		C0G		CH		JB	X5R	X7R	X7S
(pF)	Code	2E (250V)	2A (100V)	2E (250V)	2A (100V)	2A (100V)	2A (100V)	2A (100V)	2A (100V)
1	010								
1.5	1R5								
2	020								
2.2	2R2								
3	030								
3.3	3R3								
4	040								
4.7	4R7								
5	050								
6	060								
6.8	6R8								
7	070								
8	080								
9	090								
10	100								
12	120								
15	150								
18	180								
22	220								
27	270								
33	330								
39	390								
47	470								
56	560								
68	680								
82	820								
100	101								
120	121								
150	151								
180	181								
220	221								
270	271								
330	331								
390	391								
470	471								
560	561								
680	681								
820	821								
1,000	102								
1,200	122								
1,500	152								
1,800	182								
2,200	222								
2,700	272								
3,300	332								
3,900	392								
4,700	472								
5,600	562								
6,800	682								
8,200	822								
10,000	103								
15,000	153								
22,000	223								
33,000	333								
47,000	473								
68,000	683								
100,000	104								

Standard thickness  0.8 mm

 Background gray: These products are not recommended for new designs.

 For details such as the catalog numbers, please refer to the capacitance range table on page 13 and after.

 Please be sure to request delivery specifications that provide further details on the features and specifications of the products for proper and safe use. Please note that the contents may change without any prior notice due to reasons such as upgrading.

MULTILAYER CERAMIC CHIP CAPACITORS TDK

Capacitance range chart

C2012 [0805 inch]

Capacitance		C0G			CH			JB		X5R		X7R	
(pF)	Code	2W (450V)	2E (250V)	2A (100V)	2W (450V)	2E (250V)	2A (100V)	2E (250V)	2A (100V)	2E (250V)	2A (100V)	2E (250V)	2A (100V)
100	101	█			█								
120	121	█			█								
150	151	█			█								
180	181	█			█								
220	221	█			█								
270	271	█			█								
330	331	█			█								
390	391	█			█								
470	471	█			█								
560	561	█			█								
680	681	█			█								
820	821	█	█		█	█							
1,000	102	█	█	█	█	█	█	█	█	█	█	█	█
1,200	122	█	█		█	█		█	█	█	█	█	█
1,500	152	█	█		█	█		█	█	█	█	█	█
1,800	182	█	█		█	█		█	█	█	█	█	█
2,200	222	█	█		█	█		█	█	█	█	█	█
2,700	272	█	█		█	█		█	█	█	█	█	█
3,300	332	█	█		█	█		█	█	█	█	█	█
3,900	392	█	█		█	█		█	█	█	█	█	█
4,700	472	█	█		█	█		█	█	█	█	█	█
5,600	562	█	█		█	█		█	█	█	█	█	█
6,800	682	█	█		█	█		█	█	█	█	█	█
8,200	822	█	█		█	█		█	█	█	█	█	█
10,000	103		█			█		█	█	█	█	█	█
15,000	153		█			█		█	█	█	█	█	█
22,000	223		█	█		█		█	█	█	█	█	█
33,000	333			█		█		█	█	█	█	█	█
47,000	473			█		█		█	█	█	█	█	█
68,000	683					█		█	█	█	█	█	█
100,000	104					█		█	█	█	█	█	█

Capacitance		X7S	X7T			
(pF)	Code	2A (100V)	2W (450V)	2V (350V)	2E (250V)	
10,000	103		█	█		
15,000	153		█	█		
22,000	223		█	█		
33,000	333		█	█	█	
47,000	473		█	█	█	
68,000	683				█	
100,000	104				█	
150,000	154	█				
220,000	224	█				
330,000	334	█				
470,000	474	█				
680,000	684	█				
1,000,000	105	█				

Standard thickness █ 0.60 mm █ 0.85 mm █ 1.25 mm

Background gray: These products are not recommended for new designs.

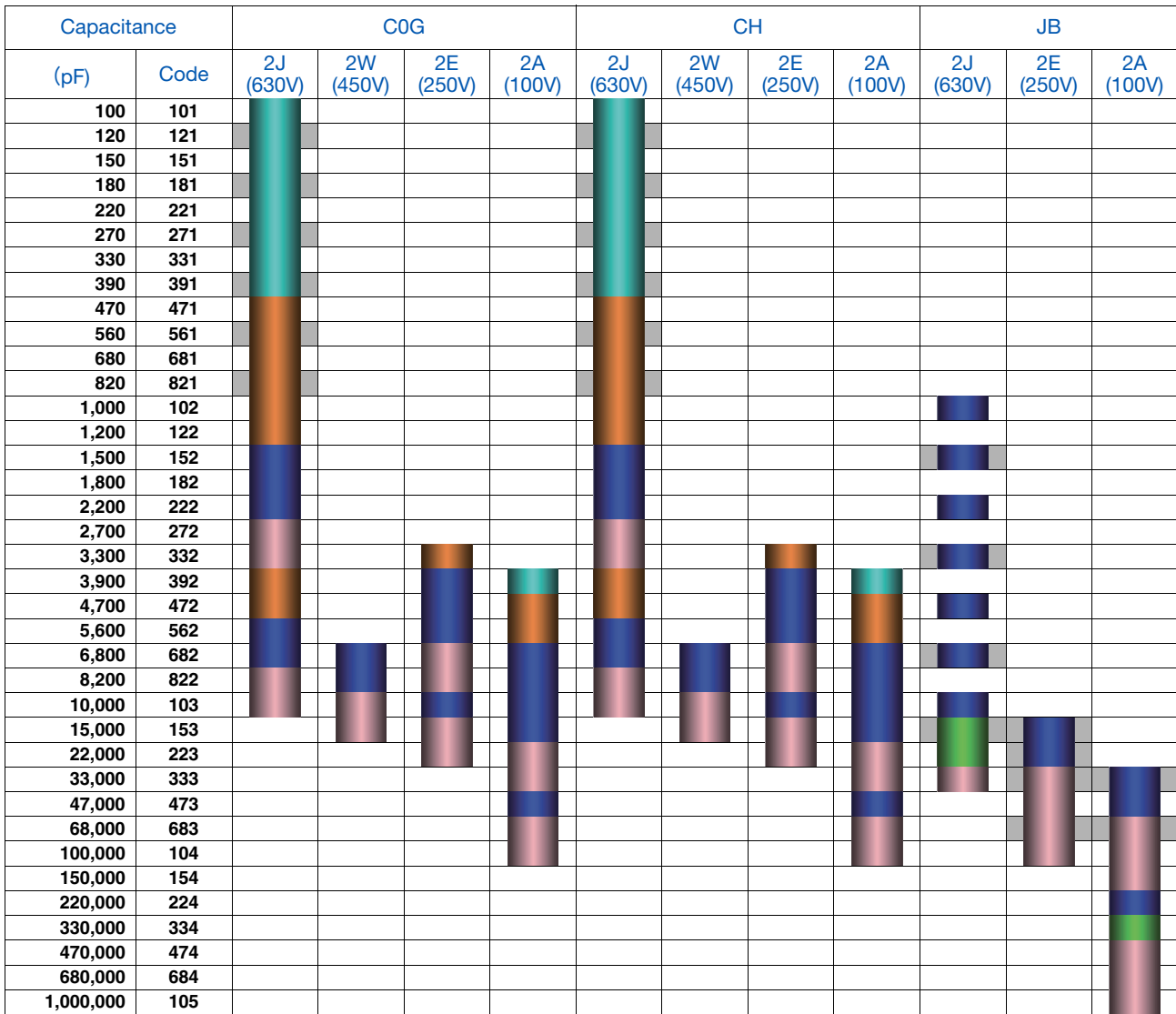
For details such as the catalog numbers, please refer to the capacitance range table on page 13 and after.

**⚠** Please be sure to request delivery specifications that provide further details on the features and specifications of the products for proper and safe use. Please note that the contents may change without any prior notice due to reasons such as upgrading.

# MULTILAYER CERAMIC CHIP CAPACITORS TDK

## Capacitance range chart

C3216 [1206 inch]



Standard thickness  0.85 mm  1.15 mm  1.30 mm  1.60 mm

Background gray: These products are not recommended for new designs.

■ For details such as the catalog numbers, please refer to the capacitance range table on page 13 and after.

⚠ Please be sure to request delivery specifications that provide further details on the features and specifications of the products for proper and safe use. Please note that the contents may change without any prior notice due to reasons such as upgrading.



MULTILAYER CERAMIC CHIP CAPACITORS TDK

Capacitance range chart

C3216 [1206 inch]

Capacitance		X5R			X7R			X7S	X7T			
(pF)	Code	2J (630V)	2E (250V)	2A (100V)	2J (630V)	2E (250V)	2A (100V)	2A (100V)	2J (630V)	2W (450V)	2V (350V)	2E (250V)
1,000	102	█			█							
1,500	152	█			█							
2,200	222	█			█							
3,300	332	█			█							
4,700	472	█			█							
6,800	682	█			█							
10,000	103	█			█				█			
15,000	153	█			█	█			█			
22,000	223	█			█	█			█			
33,000	333	█	█		█	█			█			
47,000	473		█			█			█			
68,000	683		█			█				█	█	
100,000	104		█			█				█	█	
150,000	154			█		█						█
220,000	224			█		█						█
330,000	334			█		█						█
470,000	474			█		█						█
680,000	684			█		█						█
1,000,000	105							█				
1,500,000	155							█				
2,200,000	225							█				
3,300,000	335							█				

Standard thickness █ 0.85 mm █ 1.15 mm █ 1.30 mm █ 1.60 mm

Background gray: These products are not recommended for new designs.

█ For details such as the catalog numbers, please refer to the capacitance range table on page 13 and after.

⚠ Please be sure to request delivery specifications that provide further details on the features and specifications of the products for proper and safe use. Please note that the contents may change without any prior notice due to reasons such as upgrading.

## Capacitance range chart

C3225 [1210 inch]

Capacitance		C0G				CH				JB		
(pF)	Code	2J (630V)	2W (450V)	2E (250V)	2A (100V)	2J (630V)	2W (450V)	2E (250V)	2A (100V)	2J (630V)	2E (250V)	2A (100V)
3,900	392	■				■						
4,700	472	■				■						
5,600	562	■				■						
6,800	682	■				■						
8,200	822	■				■						
10,000	103	■		■		■		■				
15,000	153	■	■	■	■	■	■	■	■			
22,000	223	■	■	■	■	■	■	■	■			
33,000	333	■	■	■	■	■	■	■	■	■		
47,000	473			■	■			■	■	■		
68,000	683				■				■	■		
100,000	104									■	■	
150,000	154										■	■
220,000	224											■
330,000	334											■
470,000	474											■
680,000	684											■
1,000,000	105											■
1,500,000	155											■
2,200,000	225											■

Capacitance		X5R			X7R			X7S	X7T		
(pF)	Code	2J (630V)	2E (250V)	2A (100V)	2J (630V)	2E (250V)	2A (100V)	2A (100V)	2J (630V)	2W (450V)	2E (250V)
47,000	473	■			■						
68,000	683	■			■						
100,000	104					■			■		
150,000	154		■			■			■		
220,000	224		■			■			■	■	
330,000	334						■				■
470,000	474										
680,000	684										
1,000,000	105										
1,500,000	155			■							
2,200,000	225			■							
3,300,000	335							■			
4,700,000	475							■			

Standard thickness ■ 1.25 mm ■ 1.60 mm ■ 2.00 mm ■ 2.30 mm ■ 2.50 mm

■ Background gray: These products are not recommended for new designs.

■ For details such as the catalog numbers, please refer to the capacitance range table on page 13 and after.






MULTILAYER CERAMIC CHIP CAPACITORS 


Capacitance range chart

C4532 [1812 inch]


Capacitance		C0G				CH				JB		
(pF)	Code	2J (630V)	2W (450V)	2E (250V)	2A (100V)	2J (630V)	2W (450V)	2E (250V)	2A (100V)	2J (630V)	2E (250V)	2A (100V)
8,200	822	█				█						
10,000	103					█						
15,000	153	█				█						
22,000	223	█				█		█				
33,000	333	█				█		█				
47,000	473	█	█			█	█	█	█			
68,000	683		█				█	█	█	█		
100,000	104			█	█			█	█	█		
150,000	154									█	█	
220,000	224									█	█	
330,000	334									█	█	
470,000	474									█	█	
680,000	684										█	█
1,000,000	105										█	█
1,500,000	155										█	█
2,200,000	225										█	█

Capacitance		X5R		X7R			X7S	X7T		
(pF)	Code	2J (630V)	2E (250V)	2J (630V)	2E (250V)	2A (100V)	2A (100V)	2J (630V)	2W (450V)	2E (250V)
68,000	683			█						
100,000	104	█		█						
150,000	154				█			█		
220,000	224				█			█		
300,000	304							█		
330,000	334				█				█	
470,000	474		█		█				█	
680,000	684					█				█
1,000,000	105					█				█
1,500,000	155					█				
2,200,000	225					█	█			
3,300,000	335						█			
4,700,000	475						█			

Standard thickness  1.60 mm  2.00 mm  2.30 mm  2.50 mm  3.20 mm

 Background gray: These products are not recommended for new designs.

■ For details such as the catalog numbers, please refer to the capacitance range table on page 13 and after.

 Please be sure to request delivery specifications that provide further details on the features and specifications of the products for proper and safe use. Please note that the contents may change without any prior notice due to reasons such as upgrading.

## Capacitance range chart

C5750 [2220 inch]

Capacitance		C0G				CH				JB		
(pF)	Code	2J (630V)	2W (450V)	2E (250V)	2A (100V)	2J (630V)	2W (450V)	2E (250V)	2A (100V)	2J (630V)	2E (250V)	2A (100V)
68,000	683	■				■						
100,000	104	■	■			■	■					
150,000	154			■	■			■	■	■		
220,000	224									■		
330,000	334										■	
470,000	474										■	
680,000	684										■	
1,000,000	105										■	
1,500,000	155										■	
2,200,000	225										■	
3,300,000	335										■	
4,700,000	475										■	

Capacitance		X5R			X6S	X7R			X7S	X7T		
(pF)	Code	2J (630V)	2E (250V)	2A (100V)	2W (450V)	2J (630V)	2E (250V)	2A (100V)	2A (100V)	2J (630V)	2W (450V)	2E (250V)
150,000	154	■				■						
220,000	224	■				■						
330,000	334						■			■		
470,000	474						■			■		
680,000	684		■				■	■			■	
1,000,000	105		■		■		■	■			■	
1,500,000	155				■			■				■
2,200,000	225				■			■				■
3,300,000	335			■				■				
4,700,000	475			■				■				
6,800,000	685								■			
10,000,000	106								■			
15,000,000	156								■			
22,000,000	226								■			

Standard thickness ■ 1.60 mm ■ 2.00 mm ■ 2.30 mm ■ 2.50 mm ■ 2.80 mm

■ Background gray: These products are not recommended for new designs.

■ For details such as the catalog numbers, please refer to the capacitance range table on page 13 and after.

# MULTILAYER CERAMIC CHIP CAPACITORS TDK

## Capacitance range table

Temperature characteristic: C0G (-55 to +125°C, 0±30ppm/°C)

Capacitance	Dimensions	Thickness (mm)	Capacitance tolerance	Catalog number			
				Rated voltage Edc: 630V	Rated voltage Edc: 450V	Rated voltage Edc: 250V	Rated voltage Edc: 100V
1pF	1608	0.80±0.10	±0.25pF				<a href="#">C1608C0G2A010C080AA</a>
1.5pF	1608	0.80±0.10	±0.25pF				<a href="#">C1608C0G2A1R5C080AA</a>
2pF	1608	0.80±0.10	±0.25pF				<a href="#">C1608C0G2A020C080AA</a>
2.2pF	1608	0.80±0.10	±0.25pF				<a href="#">C1608C0G2A2R2C080AA</a>
3pF	1608	0.80±0.10	±0.25pF				<a href="#">C1608C0G2A030C080AA</a>
3.3pF	1608	0.80±0.10	±0.25pF				<a href="#">C1608C0G2A3R3C080AA</a>
4pF	1608	0.80±0.10	±0.25pF				<a href="#">C1608C0G2A040C080AA</a>
4.7pF	1608	0.80±0.10	±0.25pF				<a href="#">C1608C0G2A4R7C080AA</a>
5pF	1608	0.80±0.10	±0.25pF				<a href="#">C1608C0G2A050C080AA</a>
6pF	1608	0.80±0.10	±0.50pF				<a href="#">C1608C0G2A060D080AA</a>
6.8pF	1608	0.80±0.10	±0.50pF				<a href="#">C1608C0G2A6R8D080AA</a>
7pF	1608	0.80±0.10	±0.50pF				<a href="#">C1608C0G2A070D080AA</a>
8pF	1608	0.80±0.10	±0.50pF				<a href="#">C1608C0G2A080D080AA</a>
9pF	1608	0.80±0.10	±0.50pF				<a href="#">C1608C0G2A090D080AA</a>
10pF	1608	0.80±0.10	±0.50pF				<a href="#">C1608C0G2A100D080AA</a>
12pF	1608	0.80±0.10	±5%				<a href="#">C1608C0G2A120J080AA</a>
15pF	1608	0.80±0.10	±5%				<a href="#">C1608C0G2A150J080AA</a>
18pF	1608	0.80±0.10	±5%				<a href="#">C1608C0G2A180J080AA</a>
22pF	1608	0.80±0.10	±5%				<a href="#">C1608C0G2A220J080AA</a>
27pF	1608	0.80±0.10	±5%				<a href="#">C1608C0G2A270J080AA</a>
33pF	1608	0.80±0.10	±5%				<a href="#">C1608C0G2A330J080AA</a>
39pF	1608	0.80±0.10	±5%				<a href="#">C1608C0G2A390J080AA</a>
47pF	1608	0.80±0.10	±5%				<a href="#">C1608C0G2A470J080AA</a>
56pF	1608	0.80±0.10	±5%				<a href="#">C1608C0G2A560J080AA</a>
68pF	1608	0.80±0.10	±5%				<a href="#">C1608C0G2A680J080AA</a>
82pF	1608	0.80±0.10	±5%				<a href="#">C1608C0G2A820J080AA</a>
100pF	1005	0.50±0.05	±10%				<a href="#">C1005C0G2A101K050BA</a>
			±5%				<a href="#">C1005C0G2A101J050BA</a>
	1608	0.80±0.10	±10%			<a href="#">C1608C0G2E101K080AA</a>	<a href="#">C1608C0G2A101K080AA</a>
			±5%		<a href="#">C1608C0G2E101J080AA</a>	<a href="#">C1608C0G2A101J080AA</a>	
			±2%			<a href="#">C1608C0G2A101G080AA</a>	
			±1%			<a href="#">C1608C0G2A101F080AA</a>	
	2012	0.60±0.15	±10%		<a href="#">C2012C0G2W101K060AA</a>		
			±5%		<a href="#">C2012C0G2W101J060AA</a>		
	3216	0.60±0.15	±10%	<a href="#">C3216C0G2J101K060AA</a>			
			±5%	<a href="#">C3216C0G2J101J060AA</a>			
120pF	1005	0.50±0.05	±10%			<a href="#">C1005C0G2A121K050BA</a>	
			±5%			<a href="#">C1005C0G2A121J050BA</a>	
	1608	0.80±0.10	±10%			<a href="#">C1608C0G2E121K080AA</a>	<a href="#">C1608C0G2A121K080AA</a>
			±5%		<a href="#">C1608C0G2E121J080AA</a>	<a href="#">C1608C0G2A121J080AA</a>	
	2012	0.60±0.15	±10%		<a href="#">C2012C0G2W121K060AA</a>		
			±5%		<a href="#">C2012C0G2W121J060AA</a>		
3216	0.60±0.15	±10%	<a href="#">C3216C0G2J121K060AA</a>				
		±5%	<a href="#">C3216C0G2J121J060AA</a>				
150pF	1005	0.50±0.05	±10%			<a href="#">C1005C0G2A151K050BA</a>	
			±5%			<a href="#">C1005C0G2A151J050BA</a>	
	1608	0.80±0.10	±10%			<a href="#">C1608C0G2E151K080AA</a>	<a href="#">C1608C0G2A151K080AA</a>
			±5%		<a href="#">C1608C0G2E151J080AA</a>	<a href="#">C1608C0G2A151J080AA</a>	
2012	0.60±0.15	±10%		<a href="#">C2012C0G2W151K060AA</a>			
		±5%		<a href="#">C2012C0G2W151J060AA</a>			
3216	0.60±0.15	±10%	<a href="#">C3216C0G2J151K060AA</a>				
		±5%	<a href="#">C3216C0G2J151J060AA</a>				
180pF	1005	0.50±0.05	±10%			<a href="#">C1005C0G2A181K050BA</a>	
			±5%			<a href="#">C1005C0G2A181J050BA</a>	
	1608	0.80±0.10	±10%			<a href="#">C1608C0G2E181K080AA</a>	<a href="#">C1608C0G2A181K080AA</a>
			±5%		<a href="#">C1608C0G2E181J080AA</a>	<a href="#">C1608C0G2A181J080AA</a>	
2012	0.60±0.15	±10%		<a href="#">C2012C0G2W181K060AA</a>			
		±5%		<a href="#">C2012C0G2W181J060AA</a>			
3216	0.60±0.15	±10%	<a href="#">C3216C0G2J181K060AA</a>				
		±5%	<a href="#">C3216C0G2J181J060AA</a>				
220pF	1005	0.50±0.05	±10%			<a href="#">C1005C0G2A221K050BA</a>	
			±5%			<a href="#">C1005C0G2A221J050BA</a>	
	1608	0.80±0.10	±10%			<a href="#">C1608C0G2E221K080AA</a>	<a href="#">C1608C0G2A221K080AA</a>
			±5%		<a href="#">C1608C0G2E221J080AA</a>	<a href="#">C1608C0G2A221J080AA</a>	
2012	0.60±0.15	±10%		<a href="#">C2012C0G2W221K060AA</a>			
		±5%		<a href="#">C2012C0G2W221J060AA</a>			
3216	0.60±0.15	±10%	<a href="#">C3216C0G2J221K060AA</a>				
		±5%	<a href="#">C3216C0G2J221J060AA</a>				

■ Gray items: These products are not recommended for new designs.

⚠ Please be sure to request delivery specifications that provide further details on the features and specifications of the products for proper and safe use. Please note that the contents may change without any prior notice due to reasons such as upgrading.

## MULTILAYER CERAMIC CHIP CAPACITORS



## Capacitance range table

Temperature characteristic: C0G (-55 to +125°C, 0±30ppm/°C)

Capacitance	Dimensions	Thickness (mm)	Capacitance tolerance	Catalog number			
				Rated voltage Edc: 630V	Rated voltage Edc: 450V	Rated voltage Edc: 250V	Rated voltage Edc: 100V
270pF	1005	0.50±0.05	±10%				C1005C0G2A271K050BA
			±5%			C1005C0G2A271J050BA	
	1608	0.80±0.10	±10%		C1608C0G2E271K080AA	C1608C0G2A271K080AA	
			±5%		C1608C0G2E271J080AA	C1608C0G2A271J080AA	
2012	0.60±0.15	±10%		C2012C0G2W271K060AA			
		±5%		C2012C0G2W271J060AA			
3216	0.60±0.15	±10%	C3216C0G2J271K060AA				
		±5%	C3216C0G2J271J060AA				
330pF	1005	0.50±0.05	±10%				C1005C0G2A331K050BA
			±5%			C1005C0G2A331J050BA	
	1608	0.80±0.10	±10%		C1608C0G2E331K080AA	C1608C0G2A331K080AA	
			±5%		C1608C0G2E331J080AA	C1608C0G2A331J080AA	
2012	0.60±0.15	±10%		C2012C0G2W331K060AA			
		±5%		C2012C0G2W331J060AA			
3216	0.60±0.15	±10%	C3216C0G2J331K060AA				
		±5%	C3216C0G2J331J060AA				
390pF	1005	0.50±0.05	±10%				C1005C0G2A391K050BA
			±5%			C1005C0G2A391J050BA	
	1608	0.80±0.10	±10%		C1608C0G2E391K080AA	C1608C0G2A391K080AA	
			±5%		C1608C0G2E391J080AA	C1608C0G2A391J080AA	
2012	0.60±0.15	±10%		C2012C0G2W391K060AA			
		±5%		C2012C0G2W391J060AA			
3216	0.60±0.15	±10%	C3216C0G2J391K060AA				
		±5%	C3216C0G2J391J060AA				
470pF	1005	0.50±0.05	±10%				C1005C0G2A471K050BA
			±5%			C1005C0G2A471J050BA	
	1608	0.80±0.10	±10%		C1608C0G2E471K080AA	C1608C0G2A471K080AA	
			±5%		C1608C0G2E471J080AA	C1608C0G2A471J080AA	
2012	0.60±0.15	±10%		C2012C0G2W471K060AA			
		±5%		C2012C0G2W471J060AA			
3216	0.85±0.15	±10%	C3216C0G2J471K085AA				
		±5%	C3216C0G2J471J085AA				
560pF	1005	0.50±0.05	±10%				C1005C0G2A561K050BC
			±5%			C1005C0G2A561J050BC	
	1608	0.80±0.10	±10%		C1608C0G2E561K080AA	C1608C0G2A561K080AA	
			±5%		C1608C0G2E561J080AA	C1608C0G2A561J080AA	
2012	0.60±0.15	±10%		C2012C0G2W561K060AA			
		±5%		C2012C0G2W561J060AA			
3216	0.85±0.15	±10%	C3216C0G2J561K085AA				
		±5%	C3216C0G2J561J085AA				
680pF	1005	0.50±0.05	±10%				C1005C0G2A681K050BC
			±5%			C1005C0G2A681J050BC	
	1608	0.80±0.10	±10%		C1608C0G2E681K080AA	C1608C0G2A681K080AA	
			±5%		C1608C0G2E681J080AA	C1608C0G2A681J080AA	
2012	0.60±0.15	±10%		C2012C0G2W681K060AA			
		±5%		C2012C0G2W681J060AA			
3216	0.85±0.15	±10%	C3216C0G2J681K085AA				
		±5%	C3216C0G2J681J085AA				
820pF	1005	0.50±0.05	±10%				C1005C0G2A821K050BC
			±5%			C1005C0G2A821J050BC	
	1608	0.80±0.10	±10%		C1608C0G2E821K080AA	C1608C0G2A821K080AA	
			±5%		C1608C0G2E821J080AA	C1608C0G2A821J080AA	
2012	0.60±0.15	±10%		C2012C0G2W821K060AA			
		±5%		C2012C0G2W821J060AA			
3216	0.85±0.15	±10%	C3216C0G2J821K085AA				
		±5%	C3216C0G2J821J085AA				
1nF	1005	0.50±0.05	±10%				C1005C0G2A102K050BC
			±5%			C1005C0G2A102J050BC	
	1608	0.80±0.10	±10%		C1608C0G2E102K080AA	C1608C0G2A102K080AA	
			±5%		C1608C0G2E102J080AA	C1608C0G2A102J080AA	
2012	0.60±0.15	±10%		C2012C0G2W102K060AA			
		±5%		C2012C0G2W102J060AA			
3216	0.85±0.15	±10%	C3216C0G2J102K085AA				
		±5%	C3216C0G2J102J085AA				

■ Gray items: These products are not recommended for new designs.

⚠ Please be sure to request delivery specifications that provide further details on the features and specifications of the products for proper and safe use.  
Please note that the contents may change without any prior notice due to reasons such as upgrading.

**MULTILAYER CERAMIC CHIP CAPACITORS** 

**Capacitance range table**      **Temperature characteristic: C0G (-55 to +125°C, 0±30ppm/°C)**

Capacitance	Dimensions	Thickness (mm)	Capacitance tolerance	Catalog number			
				Rated voltage Edc: 630V	Rated voltage Edc: 450V	Rated voltage Edc: 250V	Rated voltage Edc: 100V
1.2nF	1608	0.80±0.10	±10%			C1608C0G2E122K080AA	C1608C0G2A122K080AA
			±5%			C1608C0G2E122J080AA	C1608C0G2A122J080AA
	2012	0.60±0.15	±10%		C2012C0G2W122K060AA		
			±5%		C2012C0G2W122J060AA		C2012C0G2A122J060AA
	3216	0.85±0.15	±10%			C2012C0G2E122K085AA	
			±5%			C2012C0G2E122J085AA	
			±10%	C3216C0G2J122K085AA			
			±5%	C3216C0G2J122J085AA			
1.5nF	1608	0.80±0.10	±10%			C1608C0G2E152K080AA	C1608C0G2A152K080AA
			±5%			C1608C0G2E152J080AA	C1608C0G2A152J080AA
	2012	0.60±0.15	±10%				C2012C0G2A152K060AA
			±5%				C2012C0G2A152J060AA
	3216	1.15±0.15	±10%		C2012C0G2W152K085AA	C2012C0G2E152K085AA	
			±5%		C2012C0G2W152J085AA	C2012C0G2E152J085AA	
			±10%	C3216C0G2J152K115AA			
			±5%	C3216C0G2J152J115AA			
1.8nF	1608	0.80±0.10	±10%			C1608C0G2E182K080AA	C1608C0G2A182K080AA
			±5%			C1608C0G2E182J080AA	C1608C0G2A182J080AA
	2012	0.85±0.15	±10%		C2012C0G2W182K085AA		C2012C0G2A182K085AA
			±5%		C2012C0G2W182J085AA		C2012C0G2A182J085AA
	3216	1.15±0.15	±10%			C2012C0G2E182K125AA	
			±5%			C2012C0G2E182J125AA	
			±10%	C3216C0G2J182K115AA			
			±5%	C3216C0G2J182J115AA			
2.2nF	1608	0.80±0.10	±10%				C1608C0G2A222K080AA
			±5%				C1608C0G2A222J080AA
	2012	0.85±0.15	±10%		C2012C0G2W222K085AA		C2012C0G2A222K085AA
			±5%		C2012C0G2W222J085AA		C2012C0G2A222J085AA
	3216	1.15±0.15	±10%			C2012C0G2E222K125AA	
			±5%			C2012C0G2E222J125AA	
			±10%	C3216C0G2J222K115AA			
			±5%	C3216C0G2J222J115AA			
2.7nF	1608	0.80±0.15,-0.10	±10%				C1608C0G2A272K080AA
			±5%				C1608C0G2A272J080AA
	2012	1.25±0.20	±10%		C2012C0G2W272K125AA	C2012C0G2E272K125AA	C2012C0G2A272K125AA
			±5%		C2012C0G2W272J125AA	C2012C0G2E272J125AA	C2012C0G2A272J125AA
	3216	1.60±0.20	±10%		C3216C0G2J272K160AA		
			±5%		C3216C0G2J272J160AA		
			±10%			C1608C0G2A332K080AA	
			±5%			C1608C0G2A332J080AA	
3.3nF	2012	0.85±0.15	±10%			C2012C0G2E332K085AA	
			±5%			C2012C0G2E332J085AA	
	3216	1.60±0.20	±10%		C2012C0G2W332K125AA		C2012C0G2A332K125AA
			±5%		C2012C0G2W332J125AA		C2012C0G2A332J125AA
	3216	0.85±0.15	±10%			C3216C0G2E332K085AA	
			±5%			C3216C0G2E332J085AA	
			±10%	C3216C0G2J332K160AA			
			±5%	C3216C0G2J332J160AA			
3.9nF	1608	0.80±0.10	±10%				C1608C0G2A392K080AC
			±5%				C1608C0G2A392J080AC
	2012	1.25±0.20	±10%		C2012C0G2W392K125AA	C2012C0G2E392K125AA	C2012C0G2A392K125AA
			±5%		C2012C0G2W392J125AA	C2012C0G2E392J125AA	C2012C0G2A392J125AA
	3216	0.60±0.15	±10%				C3216C0G2A392K060AA
			±5%				C3216C0G2A392J060AA
3216	0.85±0.15	±10%		C3216C0G2J392K085AA			
		±5%		C3216C0G2J392J085AA			
			±10%			C3216C0G2E392K115AA	
			±5%			C3216C0G2E392J115AA	
	3225	1.25±0.20	±10%		C3225C0G2J392K125AA		
			±5%		C3225C0G2J392J125AA		

■ Gray items: These products are not recommended for new designs.

⚠ Please be sure to request delivery specifications that provide further details on the features and specifications of the products for proper and safe use. Please note that the contents may change without any prior notice due to reasons such as upgrading.

**MULTILAYER CERAMIC CHIP CAPACITORS** 

**Capacitance range table**

**Temperature characteristic: C0G (-55 to +125°C, 0±30ppm/°C)**

Capacitance	Dimensions	Thickness (mm)	Capacitance tolerance	Catalog number			
				Rated voltage Edc: 630V	Rated voltage Edc: 450V	Rated voltage Edc: 250V	Rated voltage Edc: 100V
4.7nF	1608	0.80±0.10	±10%				C1608C0G2A472K080AC
			±5%				C1608C0G2A472J080AC
	2012	1.25±0.20	±10%		C2012C0G2W472K125AA	C2012C0G2E472K125AA	C2012C0G2A472K125AA
			±5%		C2012C0G2W472J125AA	C2012C0G2E472J125AA	C2012C0G2A472J125AA
	3216	0.85±0.15	±10%	C3216C0G2J472K085AA			C3216C0G2A472K085AA
			±5%	C3216C0G2J472J085AA			C3216C0G2A472J085AA
	3216	1.15±0.15	±10%			C3216C0G2E472K115AA	
			±5%			C3216C0G2E472J115AA	
	3225	1.60±0.20	±10%	C3225C0G2J472K160AA			
			±5%	C3225C0G2J472J160AA			
5.6nF	1608	0.80±0.10	±10%				C1608C0G2A562K080AC
			±5%				C1608C0G2A562J080AC
	2012	1.25±0.20	±10%		C2012C0G2W562K125AA	C2012C0G2E562K125AA	C2012C0G2A562K125AA
			±5%		C2012C0G2W562J125AA	C2012C0G2E562J125AA	C2012C0G2A562J125AA
	3216	0.85±0.15	±10%				C3216C0G2A562K085AA
			±5%				C3216C0G2A562J085AA
	3216	1.15±0.15	±10%	C3216C0G2J562K115AA		C3216C0G2E562K115AA	
			±5%	C3216C0G2J562J115AA		C3216C0G2E562J115AA	
	3225	1.60±0.20	±10%	C3225C0G2J562K160AA			
			±5%	C3225C0G2J562J160AA			
6.8nF	1608	0.80±0.10	±10%				C1608C0G2A682K080AC
			±5%				C1608C0G2A682J080AC
	2012	1.25±0.20	±10%			C2012C0G2E682K125AA	C2012C0G2A682K125AA
			±5%			C2012C0G2E682J125AA	C2012C0G2A682J125AA
	3216	1.15±0.15	±10%	C3216C0G2J682K115AA	C3216C0G2W682K115AA		C3216C0G2A682K115AA
			±5%	C3216C0G2J682J115AA	C3216C0G2W682J115AA		C3216C0G2A682J115AA
	3216	1.60±0.20	±10%			C3216C0G2E682K160AA	
			±5%			C3216C0G2E682J160AA	
	3225	2.00±0.20	±10%	C3225C0G2J682K200AA			
			±5%	C3225C0G2J682J200AA			
8.2nF	1608	0.80±0.10	±10%				C1608C0G2A822K080AC
			±5%				C1608C0G2A822J080AC
	2012	1.25±0.20	±10%			C2012C0G2E822K125AA	C2012C0G2A822K125AA
			±5%			C2012C0G2E822J125AA	C2012C0G2A822J125AA
	3216	1.15±0.15	±10%		C3216C0G2W822K115AA		C3216C0G2A822K115AA
			±5%		C3216C0G2W822J115AA		C3216C0G2A822J115AA
	3216	1.60±0.20	±10%	C3216C0G2J822K160AA		C3216C0G2E822K160AA	
			±5%	C3216C0G2J822J160AA		C3216C0G2E822J160AA	
	3225	1.25±0.20	±10%	C3225C0G2J822K125AA			
			±5%	C3225C0G2J822J125AA			
4532	1.60±0.20	±10%	C4532C0G2J822K160KA				
		±5%	C4532C0G2J822J160KA				
10nF	1608	0.80±0.10	±10%				C1608C0G2A103K080AC
			±5%				C1608C0G2A103J080AC
	2012	1.25±0.20	±10%			C2012C0G2E103K125AA	C2012C0G2A103K125AA
			±5%			C2012C0G2E103J125AA	C2012C0G2A103J125AA
	3216	1.15±0.15	±10%			C3216C0G2E103K115AA	C3216C0G2A103K115AA
			±5%			C3216C0G2E103J115AA	C3216C0G2A103J115AA
	3216	1.60±0.20	±10%	C3216C0G2J103K160AA	C3216C0G2W103K160AA		
			±5%	C3216C0G2J103J160AA	C3216C0G2W103J160AA		
	3225	1.25±0.20	±10%	C3225C0G2J103K125AA			
			±5%	C3225C0G2J103J125AA			
3225	1.60±0.20	±10%			C3225C0G2E103K160AA		
		±5%			C3225C0G2E103J160AA		
4532	1.60±0.20	±10%	C4532C0G2J103K160KA				
		±5%	C4532C0G2J103J160KA				

■ Gray items: These products are not recommended for new designs.

⚠ Please be sure to request delivery specifications that provide further details on the features and specifications of the products for proper and safe use. Please note that the contents may change without any prior notice due to reasons such as upgrading.



MULTILAYER CERAMIC CHIP CAPACITORS 

Capacitance range table      Temperature characteristic: C0G (-55 to +125°C, 0±30ppm/°C)

Capacitance	Dimensions	Thickness (mm)	Capacitance tolerance	Catalog number			
				Rated voltage Edc: 630V	Rated voltage Edc: 450V	Rated voltage Edc: 250V	Rated voltage Edc: 100V
15nF	2012	0.85±0.15	±10%				C2012C0G2A153K085AC
			±5%				C2012C0G2A153J085AC
	3216	1.60±0.20	±10%			C3216C0G2E153K160AA	C3216C0G2A153K115AA
			±5%			C3216C0G2E153J160AA	C3216C0G2A153J115AA
	1.60+0.30,-0.10	±10%		C3216C0G2W153K160AA			
		±5%		C3216C0G2W153J160AA			
	3225	1.60±0.20	±10%	C3225C0G2J153K160AA			C3225C0G2A153K125AA
			±5%	C3225C0G2J153J160AA			C3225C0G2A153J125AA
	4532	2.50±0.30	±10%	C4532C0G2J153K250KA			
			±5%	C4532C0G2J153J250KA			
22nF	2012	1.25±0.20	±10%				C2012C0G2A223K125AC
			±5%				C2012C0G2A223J125AC
	3216	1.60±0.20	±10%				C3216C0G2A223K160AA
			±5%				C3216C0G2A223J160AA
	1.60+0.30,-0.10	±10%			C3216C0G2E223K160AA		
		±5%			C3216C0G2E223J160AA		
	3225	1.60±0.20	±10%			C3225C0G2E223K160AA	C3225C0G2A223K160AA
			±5%			C3225C0G2E223J160AA	C3225C0G2A223J160AA
	2.30±0.20	±10%	C3225C0G2J223K230AA	C3225C0G2W223K230AA			
		±5%	C3225C0G2J223J230AA	C3225C0G2W223J230AA			
4532	1.60±0.20	±10%				C4532C0G2E223K160KA	
		±5%				C4532C0G2E223J160KA	
3.20±0.30	±10%	C4532C0G2J223K320KA					
	±5%	C4532C0G2J223J320KA					
33nF	2012	1.25±0.20	±10%				C2012C0G2A333K125AC
			±5%				C2012C0G2A333J125AC
	3216	1.60+0.30,-0.10	±10%				C3216C0G2A333K160AA
			±5%				C3216C0G2A333J160AA
	2.00±0.20	±10%					C3225C0G2A333K200AA
		±5%					C3225C0G2A333J200AA
	3225	2.30±0.20	±10%			C3225C0G2E333K230AA	
			±5%			C3225C0G2E333J230AA	
	2.50±0.30	±10%	C3225C0G2J333K250AA	C3225C0G2W333K250AA			
		±5%	C3225C0G2J333J250AA	C3225C0G2W333J250AA			
4532	2.00±0.20	±10%	C4532C0G2J333K200KA			C4532C0G2E333K200KA	
		±5%	C4532C0G2J333J200KA			C4532C0G2E333J200KA	
47nF	3216	1.15±0.15	±10%				C3216C0G2A473K115AC
			±5%				C3216C0G2A473J115AC
	3225	2.30±0.20	±10%				C3225C0G2A473K230AA
			±5%				C3225C0G2A473J230AA
	2.50±0.30	±10%				C3225C0G2E473K250AA	
		±5%				C3225C0G2E473J250AA	
	2.00±0.20	±10%					C4532C0G2A473K200KA
		±5%					C4532C0G2A473J200KA
	4532	2.30±0.20	±10%			C4532C0G2W473K230KA	
			±5%			C4532C0G2W473J230KA	
3.20±0.30	±10%	C4532C0G2J473K320KA				C4532C0G2E473K320KA	
	±5%	C4532C0G2J473J320KA				C4532C0G2E473J320KA	
68nF	3216	1.60±0.20	±10%				C3216C0G2A683K160AC
			±5%				C3216C0G2A683J160AC
	3225	2.30±0.20	±10%				C3225C0G2A683K230AA
			±5%				C3225C0G2A683J230AA
	2.30±0.20	±10%				C4532C0G2E683K230KN	
		±5%				C4532C0G2E683J230KN	
	4532	2.50±0.30	±10%				C4532C0G2A683K250KA
			±5%				C4532C0G2A683J250KA
	3.20±0.30	±10%			C4532C0G2W683K320KA		
		±5%			C4532C0G2W683J320KA		
5750	2.30±0.20	±10%	C5750C0G2J683K230KC				
		±5%	C5750C0G2J683J230KC				

■ Gray items: These products are not recommended for new designs.

⚠ Please be sure to request delivery specifications that provide further details on the features and specifications of the products for proper and safe use. Please note that the contents may change without any prior notice due to reasons such as upgrading.

## Capacitance range table

Temperature characteristic: C0G (−55 to +125°C, 0±30ppm/°C)

Capacitance	Dimensions	Thickness (mm)	Capacitance tolerance	Catalog number			
				Rated voltage Edc: 630V	Rated voltage Edc: 450V	Rated voltage Edc: 250V	Rated voltage Edc: 100V
100nF	3216	1.60±0.20	±10%				C3216C0G2A104K160AC
			±5%				C3216C0G2A104J160AC
	4532	3.20±0.30	±10%			C4532C0G2E104K320KN	C4532C0G2A104K320KA
			±5%			C4532C0G2E104J320KN	C4532C0G2A104J320KA
	5750	2.80±0.30	±10%	C5750C0G2J104K280KC	C5750C0G2W104K280KA		
			±5%	C5750C0G2J104J280KC	C5750C0G2W104J280KA		
150nF	5750	2.30±0.20	±10%			C5750C0G2E154K230KN	C5750C0G2A154K230KA
			±5%			C5750C0G2E154J230KN	C5750C0G2A154J230KA

■ Gray items: These products are not recommended for new designs.

## MULTILAYER CERAMIC CHIP CAPACITORS



## Capacitance range table

Temperature characteristic: CH (-25 to +85°C, 0±60ppm/°C)

Capacitance	Dimensions	Thickness (mm)	Capacitance tolerance	Catalog number			
				Rated voltage Edc: 630V	Rated voltage Edc: 450V	Rated voltage Edc: 250V	Rated voltage Edc: 100V
1pF	1608	0.80±0.10	±0.25pF				C1608CH2A010C080AA
1.5pF	1608	0.80±0.10	±0.25pF				C1608CH2A1R5C080AA
2pF	1608	0.80±0.10	±0.25pF				C1608CH2A020C080AA
2.2pF	1608	0.80±0.10	±0.25pF				C1608CH2A2R2C080AA
3pF	1608	0.80±0.10	±0.25pF				C1608CH2A030C080AA
3.3pF	1608	0.80±0.10	±0.25pF				C1608CH2A3R3C080AA
4pF	1608	0.80±0.10	±0.25pF				C1608CH2A040C080AA
4.7pF	1608	0.80±0.10	±0.25pF				C1608CH2A4R7C080AA
5pF	1608	0.80±0.10	±0.25pF				C1608CH2A050C080AA
6pF	1608	0.80±0.10	±0.50pF				C1608CH2A060D080AA
6.8pF	1608	0.80±0.10	±0.50pF				C1608CH2A6R8D080AA
7pF	1608	0.80±0.10	±0.50pF				C1608CH2A070D080AA
8pF	1608	0.80±0.10	±0.50pF				C1608CH2A080D080AA
9pF	1608	0.80±0.10	±0.50pF				C1608CH2A090D080AA
10pF	1608	0.80±0.10	±0.50pF				C1608CH2A100D080AA
12pF	1608	0.80±0.10	±5%				C1608CH2A120J080AA
15pF	1608	0.80±0.10	±5%				C1608CH2A150J080AA
18pF	1608	0.80±0.10	±5%				C1608CH2A180J080AA
22pF	1608	0.80±0.10	±5%				C1608CH2A220J080AA
27pF	1608	0.80±0.10	±5%				C1608CH2A270J080AA
33pF	1608	0.80±0.10	±5%				C1608CH2A330J080AA
39pF	1608	0.80±0.10	±5%				C1608CH2A390J080AA
47pF	1608	0.80±0.10	±5%				C1608CH2A470J080AA
56pF	1608	0.80±0.10	±5%				C1608CH2A560J080AA
68pF	1608	0.80±0.10	±5%				C1608CH2A680J080AA
82pF	1608	0.80±0.10	±5%				C1608CH2A820J080AA
100pF	1005	0.50±0.05	±10%				C1005CH2A101K050BA
			±5%				C1005CH2A101J050BA
	1608	0.80±0.10	±10%				C1608CH2E101K080AA
			±5%				C1608CH2E101J080AA
	2012	0.60±0.15	±10%		C2012CH2W101K060AA		
±5%				C2012CH2W101J060AA			
3216	0.60±0.15	±10%	C3216CH2J101K060AA				
			±5%	C3216CH2J101J060AA			
120pF	1005	0.50±0.05	±10%				C1005CH2A121K050BA
			±5%				C1005CH2A121J050BA
	1608	0.80±0.10	±10%				C1608CH2E121K080AA
			±5%				C1608CH2E121J080AA
	2012	0.60±0.15	±10%		C2012CH2W121K060AA		
±5%				C2012CH2W121J060AA			
3216	0.60±0.15	±10%	C3216CH2J121K060AA				
			±5%	C3216CH2J121J060AA			
150pF	1005	0.50±0.05	±10%				C1005CH2A151K050BA
			±5%				C1005CH2A151J050BA
	1608	0.80±0.10	±10%				C1608CH2E151K080AA
			±5%				C1608CH2E151J080AA
	2012	0.60±0.15	±10%		C2012CH2W151K060AA		
±5%				C2012CH2W151J060AA			
3216	0.60±0.15	±10%	C3216CH2J151K060AA				
			±5%	C3216CH2J151J060AA			
180pF	1005	0.50±0.05	±10%				C1005CH2A181K050BA
			±5%				C1005CH2A181J050BA
	1608	0.80±0.10	±10%				C1608CH2E181K080AA
			±5%				C1608CH2E181J080AA
	2012	0.60±0.15	±10%		C2012CH2W181K060AA		
±5%				C2012CH2W181J060AA			
3216	0.60±0.15	±10%	C3216CH2J181K060AA				
			±5%	C3216CH2J181J060AA			
220pF	1005	0.50±0.05	±10%				C1005CH2A221K050BA
			±5%				C1005CH2A221J050BA
	1608	0.80±0.10	±10%				C1608CH2E221K080AA
			±5%				C1608CH2E221J080AA
	2012	0.60±0.15	±10%		C2012CH2W221K060AA		
±5%				C2012CH2W221J060AA			
3216	0.60±0.15	±10%	C3216CH2J221K060AA				
			±5%	C3216CH2J221J060AA			

■ Gray items: These products are not recommended for new designs.


⚠ Please be sure to request delivery specifications that provide further details on the features and specifications of the products for proper and safe use.  
Please note that the contents may change without any prior notice due to reasons such as upgrading.

# MULTILAYER CERAMIC CHIP CAPACITORS

## Capacitance range table Temperature characteristic: CH (-25 to +85°C, 0±60ppm/°C)

Capacitance	Dimensions	Thickness (mm)	Capacitance tolerance	Catalog number			
				Rated voltage Edc: 630V	Rated voltage Edc: 450V	Rated voltage Edc: 250V	Rated voltage Edc: 100V
270pF	1005	0.50±0.05	±10%				C1005CH2A271K050BA
			±5%				C1005CH2A271J050BA
	1608	0.80±0.10	±10%			C1608CH2E271K080AA	C1608CH2A271K080AA
			±5%		C1608CH2E271J080AA	C1608CH2A271J080AA	
2012	0.60±0.15	±10%		C2012CH2W271K060AA			
		±5%		C2012CH2W271J060AA			
3216	0.60±0.15	±10%	C3216CH2J271K060AA				
		±5%	C3216CH2J271J060AA				
330pF	1005	0.50±0.05	±10%				C1005CH2A331K050BA
			±5%				C1005CH2A331J050BA
	1608	0.80±0.10	±10%			C1608CH2E331K080AA	C1608CH2A331K080AA
			±5%		C1608CH2E331J080AA	C1608CH2A331J080AA	
2012	0.60±0.15	±10%		C2012CH2W331K060AA			
		±5%		C2012CH2W331J060AA			
3216	0.60±0.15	±10%	C3216CH2J331K060AA				
		±5%	C3216CH2J331J060AA				
390pF	1005	0.50±0.05	±10%				C1005CH2A391K050BA
			±5%				C1005CH2A391J050BA
	1608	0.80±0.10	±10%			C1608CH2E391K080AA	C1608CH2A391K080AA
			±5%		C1608CH2E391J080AA	C1608CH2A391J080AA	
2012	0.60±0.15	±10%		C2012CH2W391K060AA			
		±5%		C2012CH2W391J060AA			
3216	0.60±0.15	±10%	C3216CH2J391K060AA				
		±5%	C3216CH2J391J060AA				
470pF	1005	0.50±0.05	±10%				C1005CH2A471K050BA
			±5%				C1005CH2A471J050BA
	1608	0.80±0.10	±10%			C1608CH2E471K080AA	C1608CH2A471K080AA
			±5%		C1608CH2E471J080AA	C1608CH2A471J080AA	
2012	0.60±0.15	±10%		C2012CH2W471K060AA			
		±5%		C2012CH2W471J060AA			
3216	0.85±0.15	±10%	C3216CH2J471K085AA				
		±5%	C3216CH2J471J085AA				
560pF	1005	0.50±0.05	±10%				C1005CH2A561K050BC
			±5%				C1005CH2A561J050BC
	1608	0.80±0.10	±10%			C1608CH2E561K080AA	C1608CH2A561K080AA
			±5%		C1608CH2E561J080AA	C1608CH2A561J080AA	
2012	0.60±0.15	±10%		C2012CH2W561K060AA			
		±5%		C2012CH2W561J060AA			
3216	0.85±0.15	±10%	C3216CH2J561K085AA				
		±5%	C3216CH2J561J085AA				
680pF	1005	0.50±0.05	±10%				C1005CH2A681K050BC
			±5%				C1005CH2A681J050BC
	1608	0.80±0.10	±10%			C1608CH2E681K080AA	C1608CH2A681K080AA
			±5%		C1608CH2E681J080AA	C1608CH2A681J080AA	
2012	0.60±0.15	±10%		C2012CH2W681K060AA			
		±5%		C2012CH2W681J060AA			
3216	0.85±0.15	±10%	C3216CH2J681K085AA				
		±5%	C3216CH2J681J085AA				
820pF	1005	0.50±0.05	±10%				C1005CH2A821K050BC
			±5%				C1005CH2A821J050BC
	1608	0.80±0.10	±10%			C1608CH2E821K080AA	C1608CH2A821K080AA
			±5%		C1608CH2E821J080AA	C1608CH2A821J080AA	
2012	0.60±0.15	±10%		C2012CH2W821K060AA			
		±5%		C2012CH2W821J060AA			
3216	0.85±0.15	±10%	C3216CH2J821K085AA				
		±5%	C3216CH2J821J085AA				
1nF	1005	0.50±0.05	±10%				C1005CH2A102K050BC
			±5%				C1005CH2A102J050BC
	1608	0.80±0.10	±10%			C1608CH2E102K080AA	C1608CH2A102K080AA
			±5%		C1608CH2E102J080AA	C1608CH2A102J080AA	
2012	0.60±0.15	±10%		C2012CH2W102K060AA			
		±5%		C2012CH2W102J060AA			
3216	0.85±0.15	±10%	C3216CH2J102K085AA				
		±5%	C3216CH2J102J085AA				

■ Gray items: These products are not recommended for new designs.

 Please be sure to request delivery specifications that provide further details on the features and specifications of the products for proper and safe use. Please note that the contents may change without any prior notice due to reasons such as upgrading.

## MULTILAYER CERAMIC CHIP CAPACITORS



## Capacitance range table

Temperature characteristic: CH (-25 to +85°C, 0±60ppm/°C)

Capacitance	Dimensions	Thickness (mm)	Capacitance tolerance	Catalog number			
				Rated voltage Edc: 630V	Rated voltage Edc: 450V	Rated voltage Edc: 250V	Rated voltage Edc: 100V
1.2nF	1608	0.80±0.10	±10%			C1608CH2E122K080AA	C1608CH2A122K080AA
			±5%			C1608CH2E122J080AA	C1608CH2A122J080AA
	2012	0.60±0.15	±10%		C2012CH2W122K060AA		
			±5%		C2012CH2W122J060AA		C2012CH2A122J060AA
	3216	0.85±0.15	±10%			C2012CH2E122K085AA	
			±5%			C2012CH2E122J085AA	
			±10%	C3216CH2J122K085AA			
			±5%	C3216CH2J122J085AA			
1.5nF	1608	0.80±0.10	±10%			C1608CH2E152K080AA	C1608CH2A152K080AA
			±5%			C1608CH2E152J080AA	C1608CH2A152J080AA
	2012	0.60±0.15	±10%				C2012CH2A152K060AA
			±5%				C2012CH2A152J060AA
	3216	1.15±0.15	±10%		C3216CH2J152K115AA		
			±5%		C3216CH2J152J115AA		
			±10%				
			±5%				
1.8nF	1608	0.80±0.10	±10%			C1608CH2E182K080AA	C1608CH2A182K080AA
			±5%			C1608CH2E182J080AA	C1608CH2A182J080AA
	2012	0.85±0.15	±10%		C2012CH2W182K085AA		C2012CH2A182K085AA
			±5%		C2012CH2W182J085AA		C2012CH2A182J085AA
	3216	1.15±0.15	±10%			C2012CH2E182K125AA	
			±5%			C2012CH2E182J125AA	
			±10%	C3216CH2J182K115AA			
			±5%	C3216CH2J182J115AA			
2.2nF	1608	0.80±0.10	±10%				C1608CH2A222K080AA
			±5%				C1608CH2A222J080AA
	2012	0.85±0.15	±10%		C2012CH2W222K085AA		C2012CH2A222K085AA
			±5%		C2012CH2W222J085AA		C2012CH2A222J085AA
	3216	1.15±0.15	±10%			C2012CH2E222K125AA	
			±5%			C2012CH2E222J125AA	
			±10%	C3216CH2J222K115AA			
			±5%	C3216CH2J222J115AA			
2.7nF	1608	0.80±0.15,-0.10	±10%				C1608CH2A272K080AA
			±5%				C1608CH2A272J080AA
	2012	1.25±0.20	±10%		C2012CH2W272K125AA	C2012CH2E272K125AA	C2012CH2A272K125AA
			±5%		C2012CH2W272J125AA	C2012CH2E272J125AA	C2012CH2A272J125AA
	3216	1.60±0.20	±10%		C3216CH2J272K160AA		
			±5%		C3216CH2J272J160AA		
			±10%				
			±5%				
3.3nF	1608	0.80±0.15,-0.10	±10%				C1608CH2A332K080AA
			±5%				C1608CH2A332J080AA
	2012	0.85±0.15	±10%			C2012CH2E332K085AA	
			±5%			C2012CH2E332J085AA	
	3216	0.85±0.15	±10%		C3216CH2E332K085AA		
			±5%			C3216CH2E332J085AA	
			±10%	C3216CH2J332K160AA			
			±5%	C3216CH2J332J160AA			
3.9nF	1608	0.80±0.10	±10%				C1608CH2A392K080AC
			±5%				C1608CH2A392J080AC
	2012	1.25±0.20	±10%		C2012CH2W392K125AA	C2012CH2E392K125AA	C2012CH2A392K125AA
			±5%		C2012CH2W392J125AA	C2012CH2E392J125AA	C2012CH2A392J125AA
	3216	0.60±0.15	±10%				C3216CH2A392K060AA
			±5%				C3216CH2A392J060AA
			±10%	C3216CH2J392K085AA			
			±5%	C3216CH2J392J085AA			
			±10%				
			±5%				
			±10%	C3225CH2J392K125AA			
			±5%	C3225CH2J392J125AA			

■ Gray items: These products are not recommended for new designs.

## MULTILAYER CERAMIC CHIP CAPACITORS



## Capacitance range table

Temperature characteristic: CH (-25 to +85°C, 0±60ppm/°C)

Capacitance	Dimensions	Thickness (mm)	Capacitance tolerance	Catalog number			
				Rated voltage Edc: 630V	Rated voltage Edc: 450V	Rated voltage Edc: 250V	Rated voltage Edc: 100V
4.7nF	1608	0.80±0.10	±10%				C1608CH2A472K080AC
			±5%				C1608CH2A472J080AC
	2012	1.25±0.20	±10%		C2012CH2W472K125AA	C2012CH2E472K125AA	C2012CH2A472K125AA
			±5%		C2012CH2W472J125AA	C2012CH2E472J125AA	C2012CH2A472J125AA
	3216	0.85±0.15	±10%	C3216CH2J472K085AA			C3216CH2A472K085AA
			±5%	C3216CH2J472J085AA			C3216CH2A472J085AA
	3216	1.15±0.15	±10%			C3216CH2E472K115AA	
			±5%			C3216CH2E472J115AA	
	3225	1.60±0.20	±10%	C3225CH2J472K160AA			
			±5%	C3225CH2J472J160AA			
5.6nF	1608	0.80±0.10	±10%				C1608CH2A562K080AC
			±5%				C1608CH2A562J080AC
	2012	1.25±0.20	±10%		C2012CH2W562K125AA	C2012CH2E562K125AA	C2012CH2A562K125AA
			±5%		C2012CH2W562J125AA	C2012CH2E562J125AA	C2012CH2A562J125AA
	3216	0.85±0.15	±10%				C3216CH2A562K085AA
			±5%				C3216CH2A562J085AA
	3216	1.15±0.15	±10%	C3216CH2J562K115AA		C3216CH2E562K115AA	
			±5%	C3216CH2J562J115AA		C3216CH2E562J115AA	
	3225	1.60±0.20	±10%	C3225CH2J562K160AA			
			±5%	C3225CH2J562J160AA			
6.8nF	1608	0.80±0.10	±10%				C1608CH2A682K080AC
			±5%				C1608CH2A682J080AC
	2012	1.25±0.20	±10%			C2012CH2E682K125AA	C2012CH2A682K125AA
			±5%			C2012CH2E682J125AA	C2012CH2A682J125AA
	3216	1.15±0.15	±10%	C3216CH2J682K115AA	C3216CH2W682K115AA		C3216CH2A682K115AA
			±5%	C3216CH2J682J115AA	C3216CH2W682J115AA		C3216CH2A682J115AA
	3216	1.60±0.20	±10%			C3216CH2E682K160AA	
			±5%			C3216CH2E682J160AA	
	3225	2.00±0.20	±10%	C3225CH2J682K200AA			
			±5%	C3225CH2J682J200AA			
8.2nF	1608	0.80±0.10	±10%				C1608CH2A822K080AC
			±5%				C1608CH2A822J080AC
	2012	1.25±0.20	±10%			C2012CH2E822K125AA	C2012CH2A822K125AA
			±5%			C2012CH2E822J125AA	C2012CH2A822J125AA
	3216	1.15±0.15	±10%		C3216CH2W822K115AA		C3216CH2A822K115AA
			±5%		C3216CH2W822J115AA		C3216CH2A822J115AA
	3216	1.60±0.20	±10%	C3216CH2J822K160AA		C3216CH2E822K160AA	
			±5%	C3216CH2J822J160AA		C3216CH2E822J160AA	
	3225	1.25±0.20	±10%	C3225CH2J822K125AA			
			±5%	C3225CH2J822J125AA			
4532	1.60±0.20	±10%	C4532CH2J822K160KA				
		±5%	C4532CH2J822J160KA				
10nF	1608	0.80±0.10	±10%				C1608CH2A103K080AC
			±5%				C1608CH2A103J080AC
	2012	1.25±0.20	±10%			C2012CH2E103K125AA	C2012CH2A103K125AA
			±5%			C2012CH2E103J125AA	C2012CH2A103J125AA
	3216	1.15±0.15	±10%			C3216CH2E103K115AA	C3216CH2A103K115AA
			±5%			C3216CH2E103J115AA	C3216CH2A103J115AA
	3216	1.60±0.20	±10%	C3216CH2J103K160AA	C3216CH2W103K160AA		
			±5%	C3216CH2J103J160AA	C3216CH2W103J160AA		
	3225	1.25±0.20	±10%	C3225CH2J103K125AA			
			±5%	C3225CH2J103J125AA			
3225	1.60±0.20	±10%			C3225CH2E103K160AA		
		±5%			C3225CH2E103J160AA		
4532	1.60±0.20	±10%	C4532CH2J103K160KA				
		±5%	C4532CH2J103J160KA				

■ Gray items: These products are not recommended for new designs.

## MULTILAYER CERAMIC CHIP CAPACITORS



## Capacitance range table

Temperature characteristic: CH (-25 to +85°C, 0±60ppm/°C)

Capacitance	Dimensions	Thickness (mm)	Capacitance tolerance	Catalog number			
				Rated voltage Edc: 630V	Rated voltage Edc: 450V	Rated voltage Edc: 250V	Rated voltage Edc: 100V
15nF	2012	0.85±0.15	±10%				C2012CH2A153K085AC
			±5%				C2012CH2A153J085AC
	3216	1.15±0.15	±10%				C3216CH2A153K115AA
			±5%				C3216CH2A153J115AA
	3216	1.60±0.20	±10%			C3216CH2E153K160AA	
			±5%			C3216CH2E153J160AA	
	3216	1.60+0.30,-0.10	±10%		C3216CH2W153K160AA		
			±5%		C3216CH2W153J160AA		
	3225	1.25±0.20	±10%				C3225CH2A153K125AA
			±5%				C3225CH2A153J125AA
3225	1.60±0.20	±10%	C3225CH2J153K160AA				
		±5%	C3225CH2J153J160AA				
4532	2.00±0.20	±10%			C3225CH2E153K200AA		
		±5%			C3225CH2E153J200AA		
4532	2.50±0.30	±10%	C4532CH2J153K250KA				
		±5%	C4532CH2J153J250KA				
22nF	2012	1.25±0.20	±10%				C2012CH2A223K125AC
			±5%				C2012CH2A223J125AC
	3216	1.60±0.20	±10%				C3216CH2A223K160AA
			±5%				C3216CH2A223J160AA
	3216	1.60+0.30,-0.10	±10%			C3216CH2E223K160AA	
			±5%			C3216CH2E223J160AA	
	3225	1.60±0.20	±10%			C3225CH2E223K160AA	C3225CH2A223K160AA
			±5%			C3225CH2E223J160AA	C3225CH2A223J160AA
	3225	2.30±0.20	±10%	C3225CH2J223K230AA	C3225CH2W223K230AA		
			±5%	C3225CH2J223J230AA	C3225CH2W223J230AA		
4532	1.60±0.20	±10%			C4532CH2E223K160KA		
		±5%			C4532CH2E223J160KA		
4532	3.20±0.30	±10%	C4532CH2J223K320KA				
		±5%	C4532CH2J223J320KA				
33nF	2012	1.25±0.20	±10%				C2012CH2A333K125AC
			±5%				C2012CH2A333J125AC
	3216	1.60+0.30,-0.10	±10%				C3216CH2A333K160AA
			±5%				C3216CH2A333J160AA
	3225	2.00±0.20	±10%				C3225CH2A333K200AA
			±5%				C3225CH2A333J200AA
	3225	2.30±0.20	±10%		C3225CH2E333K230AA		
			±5%		C3225CH2E333J230AA		
	3225	2.50±0.30	±10%	C3225CH2J333K250AA	C3225CH2W333K250AA		
			±5%	C3225CH2J333J250AA	C3225CH2W333J250AA		
4532	2.00±0.20	±10%	C4532CH2J333J200KA				
		±5%	C4532CH2E333K200KA				
47nF	3216	1.15±0.15	±10%				C3216CH2A473K115AC
			±5%				C3216CH2A473J115AC
	3225	2.30±0.20	±10%				C3225CH2A473K230AA
			±5%				C3225CH2A473J230AA
	3225	2.50±0.30	±10%			C3225CH2E473K250AA	
			±5%			C3225CH2E473J250AA	
	4532	2.00±0.20	±10%				C4532CH2A473K200KA
			±5%				C4532CH2A473J200KA
	4532	2.30±0.20	±10%		C4532CH2W473K230KA		
			±5%		C4532CH2W473J230KA		
4532	3.20±0.30	±10%	C4532CH2J473K320KA		C4532CH2E473K320KA		
		±5%	C4532CH2J473J320KA		C4532CH2E473J320KA		
68nF	3216	1.60±0.20	±10%				C3216CH2A683K160AC
			±5%				C3216CH2A683J160AC
	3225	2.30±0.20	±10%				C3225CH2A683K230AA
			±5%				C3225CH2A683J230AA
	4532	2.30±0.20	±10%			C4532CH2E683K230KN	
			±5%			C4532CH2E683J230KN	
	4532	2.50±0.30	±10%				C4532CH2A683K250KA
			±5%				C4532CH2A683J250KA
	4532	3.20±0.30	±10%		C4532CH2W683K320KA		
			±5%		C4532CH2W683J320KA		
5750	2.30±0.20	±10%	C5750CH2J683K230KC				
		±5%	C5750CH2J683J230KC				

■ Gray items: These products are not recommended for new designs.

⚠ Please be sure to request delivery specifications that provide further details on the features and specifications of the products for proper and safe use. Please note that the contents may change without any prior notice due to reasons such as upgrading.

## Capacitance range table

Temperature characteristic: CH (-25 to +85°C, 0±60ppm/°C)

Capacitance	Dimensions	Thickness (mm)	Capacitance tolerance	Catalog number			
				Rated voltage Edc: 630V	Rated voltage Edc: 450V	Rated voltage Edc: 250V	Rated voltage Edc: 100V
100nF	3216	1.60±0.20	±10%				C3216CH2A104K160AC
			±5%				C3216CH2A104J160AC
	4532	3.20±0.30	±10%			C4532CH2E104K320KN	C4532CH2A104K320KA
			±5%			C4532CH2E104J320KN	C4532CH2A104J320KA
	5750	2.80±0.30	±10%	C5750CH2J104K280KC	C5750CH2W104K280KA		
			±5%	C5750CH2J104J280KC	C5750CH2W104J280KA		
150nF	5750	2.30±0.20	±10%			C5750CH2E154K230KN	C5750CH2A154K230KA
			±5%			C5750CH2E154J230KN	C5750CH2A154J230KA

■ Gray items: These products are not recommended for new designs.



## MULTILAYER CERAMIC CHIP CAPACITORS



## Capacitance range table

Temperature characteristic: JB (-25 to +85°C, ±10%)

Capacitance	Dimensions	Thickness (mm)	Capacitance tolerance	Catalog number		
				Rated voltage Edc: 630V	Rated voltage Edc: 250V	Rated voltage Edc: 100V
1nF	1608	0.80±0.10	±10%			C1608JB2A102K080AA
			±20%			C1608JB2A102M080AA
	2012	0.85±0.15	±10%		C2012JB2E102K085AA	C2012JB2A102K085AA
			±20%		C2012JB2E102M085AA	C2012JB2A102M085AA
3216	1.15±0.15	±10%	C3216JB2J102K115AA			
		±20%	C3216JB2J102M115AA			
1.5nF	1608	0.80±0.10	±10%			C1608JB2A152K080AA
			±20%			C1608JB2A152M080AA
	2012	0.85±0.15	±10%		C2012JB2E152K085AA	C2012JB2A152K085AA
			±20%		C2012JB2E152M085AA	C2012JB2A152M085AA
3216	1.15±0.15	±10%	C3216JB2J152K115AA			
		±20%	C3216JB2J152M115AA			
2.2nF	1608	0.80±0.10	±10%			C1608JB2A222K080AA
			±20%			C1608JB2A222M080AA
	2012	0.85±0.15	±10%		C2012JB2E222K085AA	C2012JB2A222K085AA
			±20%		C2012JB2E222M085AA	C2012JB2A222M085AA
3216	1.15±0.15	±10%	C3216JB2J222K115AA			
		±20%	C3216JB2J222M115AA			
3.3nF	1608	0.80±0.10	±10%			C1608JB2A332K080AA
			±20%			C1608JB2A332M080AA
	2012	0.85±0.15	±10%		C2012JB2E332K085AA	C2012JB2A332K085AA
			±20%		C2012JB2E332M085AA	C2012JB2A332M085AA
3216	1.15±0.15	±10%	C3216JB2J332K115AA			
		±20%	C3216JB2J332M115AA			
4.7nF	1608	0.80±0.10	±10%			C1608JB2A472K080AA
			±20%			C1608JB2A472M080AA
	2012	0.85±0.15	±10%		C2012JB2E472K085AA	C2012JB2A472K085AA
			±20%		C2012JB2E472M085AA	C2012JB2A472M085AA
3216	1.15±0.15	±10%	C3216JB2J472K115AA			
		±20%	C3216JB2J472M115AA			
6.8nF	1608	0.80±0.10	±10%			C1608JB2A682K080AA
			±20%			C1608JB2A682M080AA
	2012	0.85±0.15	±10%			C2012JB2A682K085AA
			±20%			C2012JB2A682M085AA
3216	1.15±0.15	±10%		C2012JB2E682K125AA		
		±20%		C2012JB2E682M125AA		
10nF	1608	0.80±0.10	±10%			C1608JB2A103K080AA
			±20%			C1608JB2A103M080AA
	2012	0.85±0.15	±10%			C2012JB2A103K085AA
			±20%			C2012JB2A103M085AA
3216	1.15±0.15	±10%		C2012JB2E103K125AA		
		±20%		C2012JB2E103M125AA		
15nF	1608	0.80±0.10	±10%			C1608JB2A153K080AA
			±20%			C1608JB2A153M080AA
	2012	1.25±0.20	±10%		C2012JB2E153K125AA	C2012JB2A153K125AA
			±20%		C2012JB2E153M125AA	C2012JB2A153M125AA
3216	1.15±0.15	±10%		C3216JB2E153K115AA		
		±20%		C3216JB2E153M115AA		
3216	1.30±0.20	±10%	C3216JB2J153K130AA			
		±20%	C3216JB2J153M130AA			
22nF	1608	0.80±0.10	±10%			C1608JB2A223K080AA
			±20%			C1608JB2A223M080AA
	2012	1.25±0.20	±10%		C2012JB2E223K125AA	C2012JB2A223K125AA
			±20%		C2012JB2E223M125AA	C2012JB2A223M125AA
3216	1.15±0.15	±10%		C3216JB2E223K115AA		
		±20%		C3216JB2E223M115AA		
3216	1.30±0.20	±10%	C3216JB2J223K130AA			
		±20%	C3216JB2J223M130AA			
33nF	2012	1.25±0.20	±10%			C2012JB2A333K125AA
			±20%			C2012JB2A333M125AA
	3216	1.15±0.15	±10%			C3216JB2A333K115AA
			±20%			C3216JB2A333M115AA
3216	1.60±0.20	±10%	C3216JB2J333K160AA	C3216JB2E333K160AA		
		±20%	C3216JB2J333M160AA	C3216JB2E333M160AA		

■ Gray items: These products are not recommended for new designs.

## MULTILAYER CERAMIC CHIP CAPACITORS



## Capacitance range table

Temperature characteristic: JB (-25 to +85°C, ±10%)

Capacitance	Dimensions	Thickness (mm)	Capacitance tolerance	Catalog number		
				Rated voltage Edc: 630V	Rated voltage Edc: 250V	Rated voltage Edc: 100V
47nF	2012	1.25±0.20	±10%			C2012JB2A473K125AA
			±20%			C2012JB2A473M125AA
	3216	1.15±0.15	±10%			C3216JB2A473K115AA
			±20%			C3216JB2A473M115AA
	3225	2.00±0.20	±10%	C3225JB2E473K200AA	C3216JB2E473K160AA	
			±20%	C3225JB2J473M200AA	C3216JB2E473M160AA	
68nF	2012	0.85±0.15	±10%			C2012JB2A683K085AA
			±20%			C2012JB2A683M085AA
	3216	1.60±0.20	±10%		C3216JB2E683K160AA	C3216JB2A683K160AA
			±20%		C3216JB2E683M160AA	C3216JB2A683M160AA
	3225	2.00±0.20	±10%	C3225JB2J683K200AA		
			±20%	C3225JB2J683M200AA		
4532	1.60±0.20	±10%	C4532JB2J683K160KA			
		±20%	C4532JB2J683M160KA			
100nF	2012	1.25±0.20	±10%			C2012JB2A104K125AA
			±20%			C2012JB2A104M125AA
	3216	1.60±0.20	±10%		C3216JB2E104K160AA	C3216JB2A104K160AA
			±20%		C3216JB2E104M160AA	C3216JB2A104M160AA
	3225	2.00±0.20	±10%		C3225JB2E104K200AA	
			±20%		C3225JB2E104M200AA	
4532	2.30±0.20	±10%	C4532JB2J104K230KA			
		±20%	C4532JB2J104M230KA			
150nF	3216	1.60±0.20	±10%			C3216JB2A154K160AA
			±20%			C3216JB2A154M160AA
	3225	2.00±0.20	±10%		C3225JB2E154K200AA	
			±20%		C3225JB2E154M200AA	
	4532	1.60±0.20	±10%		C4532JB2E154K160KA	
			±20%		C4532JB2E154M160KA	
5750	1.60±0.20	±10%	C5750JB2J154K160KA			
		±20%	C5750JB2J154M160KA			
220nF	3216	1.15±0.15	±10%			C3216JB2A224K115AA
			±20%			C3216JB2A224M115AA
	3225	2.00±0.20	±10%		C3225JB2E224K200AA	
			±20%		C3225JB2E224M200AA	
	4532	2.30±0.20	±10%		C4532JB2E224K230KA	
			±20%		C4532JB2E224M230KA	
5750	2.30±0.20	±10%	C5750JB2J224K230KA			
		±20%	C5750JB2J224M230KA			
330nF	3216	1.30±0.20	±10%			C3216JB2A334K130AA
			±20%			C3216JB2A334M130AA
	3225	2.00±0.20	±10%		C3225JB2A334K200AA	
			±20%		C3225JB2A334M200AA	
	4532	2.30±0.20	±10%		C4532JB2E334K230KA	
			±20%		C4532JB2E334M230KA	
5750	1.60±0.20	±10%	C5750JB2E334K160KA			
		±20%	C5750JB2E334M160KA			
470nF	3216	1.60±0.20	±10%			C3216JB2A474K160AA
			±20%			C3216JB2A474M160AA
	3225	2.00±0.20	±10%			C3225JB2A474K200AA
			±20%			C3225JB2A474M200AA
	4532	2.30±0.20	±10%		C4532JB2E474K230KA	
			±20%		C4532JB2E474M230KA	
5750	2.30±0.20	±10%		C5750JB2E474K230KA		
		±20%		C5750JB2E474M230KA		
680nF	3216	1.60±0.20	±10%			C3216JB2A684K160AA
			±20%			C3216JB2A684M160AA
	3225	1.60±0.20	±10%			C3225JB2A684K160AA
			±20%			C3225JB2A684M160AA
	4532	2.30±0.20	±10%			C4532JB2A684K230KA
			±20%			C4532JB2A684M230KA
5750	1.60±0.20	±10%			C5750JB2A684K160KA	
		±20%			C5750JB2A684M160KA	
	2.30±0.20	±10%		C5750JB2E684K230KA		
		±20%		C5750JB2E684M230KA		

■ Gray items: These products are not recommended for new designs.

## Capacitance range table

Temperature characteristic: JB (-25 to +85°C, ±10%)

Capacitance	Dimensions	Thickness (mm)	Capacitance tolerance	Catalog number	
				Rated voltage Edc: 250V	Rated voltage Edc: 100V
1μF	3216	1.60±0.20	±10%		C3216JB2A105K160AA
			±20%		C3216JB2A105M160AA
	3225	2.00±0.20	±10%		C3225JB2A105K200AA
			±20%		C3225JB2A105M200AA
	4532	2.30±0.20	±10%		C4532JB2A105K230KA
			±20%		C4532JB2A105M230KA
5750	2.30±0.20	±10%	C5750JB2E105K230KA	C5750JB2A105K230KA	
		±20%	C5750JB2E105M230KA	C5750JB2A105M230KA	
1.5μF	3225	2.00±0.20	±10%		C3225JB2A155K200AB
			±20%		C3225JB2A155M200AB
	4532	2.30±0.20	±10%		C4532JB2A155K230KA
			±20%		C4532JB2A155M230KA
	5750	2.30±0.20	±10%		C5750JB2A155K230KA
			±20%		C5750JB2A155M230KA
2.2μF	3225	2.30±0.20	±10%		C3225JB2A225K230AB
			±20%		C3225JB2A225M230AB
	4532	2.30±0.20	±10%		C4532JB2A225K230KA
			±20%		C4532JB2A225M230KA
5750	2.30±0.20	±10%		C5750JB2A225K230KA	
		±20%		C5750JB2A225M230KA	
3.3μF	5750	2.30±0.20	±10%		C5750JB2A335K230KA
			±20%		C5750JB2A335M230KA
4.7μF	5750	2.30±0.20	±10%		C5750JB2A475K230KA
			±20%		C5750JB2A475M230KA

■ Gray items: These products are not recommended for new designs.

## MULTILAYER CERAMIC CHIP CAPACITORS



## Capacitance range table

Temperature characteristic: X5R (-55 to +85°C, ±15%)

Capacitance	Dimensions	Thickness (mm)	Capacitance tolerance	Catalog number		
				Rated voltage Edc: 630V	Rated voltage Edc: 250V	Rated voltage Edc: 100V
1nF	1608	0.80±0.10	±10%			C1608X5R2A102K080AA
			±20%			C1608X5R2A102M080AA
	2012	0.85±0.15	±10%		C2012X5R2E102K085AA	
			±20%		C2012X5R2E102M085AA	
3216	1.15±0.15	±10%	C3216X5R2J102K115AA			
		±20%	C3216X5R2J102M115AA			
1.5nF	1608	0.80±0.10	±10%			C1608X5R2A152K080AA
			±20%			C1608X5R2A152M080AA
	2012	0.85±0.15	±10%		C2012X5R2E152K085AA	
			±20%		C2012X5R2E152M085AA	
3216	1.15±0.15	±10%	C3216X5R2J152K115AA			
		±20%	C3216X5R2J152M115AA			
2.2nF	1608	0.80±0.10	±10%			C1608X5R2A222K080AA
			±20%			C1608X5R2A222M080AA
	2012	0.85±0.15	±10%		C2012X5R2E222K085AA	
			±20%		C2012X5R2E222M085AA	
3216	1.15±0.15	±10%	C3216X5R2J222K115AA			
		±20%	C3216X5R2J222M115AA			
3.3nF	1608	0.80±0.10	±10%			C1608X5R2A332K080AA
			±20%			C1608X5R2A332M080AA
	2012	0.85±0.15	±10%		C2012X5R2E332K085AA	
			±20%		C2012X5R2E332M085AA	
3216	1.15±0.15	±10%	C3216X5R2J332K115AA			
		±20%	C3216X5R2J332M115AA			
4.7nF	1608	0.80±0.10	±10%			C1608X5R2A472K080AA
			±20%			C1608X5R2A472M080AA
	2012	0.85±0.15	±10%		C2012X5R2E472K085AA	
			±20%		C2012X5R2E472M085AA	
3216	1.15±0.15	±10%	C3216X5R2J472K115AA			
		±20%	C3216X5R2J472M115AA			
6.8nF	1608	0.80±0.10	±10%			C1608X5R2A682K080AA
			±20%			C1608X5R2A682M080AA
	2012	1.25±0.20	±10%		C2012X5R2E682K125AA	
			±20%		C2012X5R2E682M125AA	
3216	1.15±0.15	±10%	C3216X5R2J682K115AA			
		±20%	C3216X5R2J682M115AA			
10nF	1608	0.80±0.10	±10%			C1608X5R2A103K080AA
			±20%			C1608X5R2A103M080AA
	2012	1.25±0.20	±10%		C2012X5R2E103K125AA	
			±20%		C2012X5R2E103M125AA	
3216	1.15±0.15	±10%	C3216X5R2J103K115AA			
		±20%	C3216X5R2J103M115AA			
15nF	1608	0.80±0.10	±10%			C1608X5R2A153K080AA
			±20%			C1608X5R2A153M080AA
	2012	1.25±0.20	±10%		C2012X5R2E153K125AA	
			±20%		C2012X5R2E153M125AA	
3216	1.30±0.20	±10%	C3216X5R2J153K130AA			
		±20%	C3216X5R2J153M130AA			
22nF	1608	0.80±0.10	±10%			C1608X5R2A223K080AA
			±20%			C1608X5R2A223M080AA
	2012	1.25±0.20	±10%		C2012X5R2E223K125AA	
			±20%		C2012X5R2E223M125AA	
3216	1.30±0.20	±10%	C3216X5R2J223K130AA			
		±20%	C3216X5R2J223M130AA			
33nF	2012	1.25±0.20	±10%			C2012X5R2A333K125AA
			±20%			C2012X5R2A333M125AA
	3216	1.60±0.20	±10%	C3216X5R2J333K160AA	C3216X5R2E333K160AA	
			±20%	C3216X5R2J333M160AA	C3216X5R2E333M160AA	
2012	1.25±0.20	±10%			C2012X5R2A473K125AA	
		±20%			C2012X5R2A473M125AA	
47nF	3216	1.60±0.20	±10%		C3216X5R2E473K160AA	
			±20%		C3216X5R2E473M160AA	
3225	2.00±0.20	±10%	C3225X5R2J473K200AA			
		±20%	C3225X5R2J473M200AA			
68nF	2012	0.85±0.15	±10%			C2012X5R2A683K085AA
			±20%			C2012X5R2A683M085AA
	3216	1.60±0.20	±10%		C3216X5R2E683K160AA	
			±20%		C3216X5R2E683M160AA	
3225	2.00±0.20	±10%	C3225X5R2J683K200AA			
		±20%	C3225X5R2J683M200AA			

■ Gray items: These products are not recommended for new designs.

⚠ Please be sure to request delivery specifications that provide further details on the features and specifications of the products for proper and safe use. Please note that the contents may change without any prior notice due to reasons such as upgrading.

## MULTILAYER CERAMIC CHIP CAPACITORS



## Capacitance range table

Temperature characteristic: X5R (–55 to +85°C, ±15%)

Capacitance	Dimensions	Thickness (mm)	Capacitance tolerance	Catalog number		
				Rated voltage Edc: 630V	Rated voltage Edc: 250V	Rated voltage Edc: 100V
100nF	2012	1.25±0.20	±10%			C2012X5R2A104K125AA
			±20%			C2012X5R2A104M125AA
	3216	1.60±0.20	±10%		C3216X5R2E104K160AA	
			±20%		C3216X5R2E104M160AA	
4532	2.30±0.20	±10%	C4532X5R2J104K230KA			
		±20%	C4532X5R2J104M230KA			
150nF	3216	1.60±0.20	±10%			C3216X5R2A154K160AA
			±20%			C3216X5R2A154M160AA
	3225	2.00±0.20	±10%		C3225X5R2E154K200AA	
			±20%		C3225X5R2E154M200AA	
5750	1.60±0.20	±10%	C5750X5R2J154K160KA			
		±20%	C5750X5R2J154M160KA			
220nF	3216	1.15±0.15	±10%			C3216X5R2A224K115AA
			±20%			C3216X5R2A224M115AA
	3225	2.00±0.20	±10%		C3225X5R2E224K200AA	
			±20%		C3225X5R2E224M200AA	
5750	2.30±0.20	±10%	C5750X5R2J224K230KA			
		±20%	C5750X5R2J224M230KA			
330nF	3216	1.30±0.20	±10%			C3216X5R2A334K130AA
			±20%			C3216X5R2A334M130AA
	4532	2.30±0.20	±10%		C4532X5R2E334K230KA	
			±20%		C4532X5R2E334M230KA	
470nF	3216	1.60±0.20	±10%			C3216X5R2A474K160AA
			±20%			C3216X5R2A474M160AA
	4532	2.30±0.20	±10%		C4532X5R2E474K230KA	
			±20%		C4532X5R2E474M230KA	
680nF	3216	1.60±0.20	±10%			C3216X5R2A684K160AA
			±20%			C3216X5R2A684M160AA
	5750	2.30±0.20	±10%		C5750X5R2E684K230KA	
			±20%		C5750X5R2E684M230KA	
1µF	3216	1.60±0.20	±10%			C3216X5R2A105K160AA
			±20%			C3216X5R2A105M160AA
	5750	2.30±0.20	±10%		C5750X5R2E105K230KA	
			±20%		C5750X5R2E105M230KA	
1.5µF	3225	2.00±0.20	±10%			C3225X5R2A155K200AB
			±20%			C3225X5R2A155M200AB
2.2µF	3225	2.30±0.20	±10%			C3225X5R2A225K230AB
			±20%			C3225X5R2A225M230AB
3.3µF	5750	2.30±0.20	±10%			C5750X5R2A335K230KA
			±20%			C5750X5R2A335M230KA
4.7µF	5750	2.30±0.20	±10%			C5750X5R2A475K230KA
			±20%			C5750X5R2A475M230KA

■ Gray items: These products are not recommended for new designs.

## Capacitance range table

Temperature characteristic: X6S (–55 to +105°C, ±22%)

Capacitance	Dimensions	Thickness (mm)	Capacitance tolerance	Catalog number
				Rated voltage Edc: 450V
1µF	5750	2.50±0.30	±10%	C5750X6S2W105K250KA
			±20%	C5750X6S2W105M250KA
2.2µF	5750	2.50±0.30	±10%	C5750X6S2W225K250KA
			±20%	C5750X6S2W225M250KA

■ Gray items: These products are not recommended for new designs.

## MULTILAYER CERAMIC CHIP CAPACITORS



## Capacitance range table

Temperature characteristic: X7R (–55 to +125°C, ±15%)

Capacitance	Dimensions	Thickness (mm)	Capacitance tolerance	Catalog number		
				Rated voltage Edc: 630V	Rated voltage Edc: 250V	Rated voltage Edc: 100V
1nF	1608	0.80±0.10	±10%			C1608X7R2A102K080AA
			±20%			C1608X7R2A102M080AA
	2012	0.85±0.15	±10%		C2012X7R2E102K085AA	C2012X7R2A102K085AA
			±20%		C2012X7R2E102M085AA	C2012X7R2A102M085AA
	3216	1.15±0.15	±10%	C3216X7R2J102K115AA		
			±20%	C3216X7R2J102M115AA		
1.5nF	1608	0.80±0.10	±10%			C1608X7R2A152K080AA
			±20%			C1608X7R2A152M080AA
	2012	0.85±0.15	±10%		C2012X7R2E152K085AA	C2012X7R2A152K085AA
			±20%		C2012X7R2E152M085AA	C2012X7R2A152M085AA
	3216	1.15±0.15	±10%	C3216X7R2J152K115AA		
			±20%	C3216X7R2J152M115AA		
2.2nF	1608	0.80±0.10	±10%			C1608X7R2A222K080AA
			±20%			C1608X7R2A222M080AA
	2012	0.85±0.15	±10%		C2012X7R2E222K085AA	C2012X7R2A222K085AA
			±20%		C2012X7R2E222M085AA	C2012X7R2A222M085AA
	3216	1.15±0.15	±10%	C3216X7R2J222K115AA		
			±20%	C3216X7R2J222M115AA		
3.3nF	1608	0.80±0.10	±10%			C1608X7R2A332K080AA
			±20%			C1608X7R2A332M080AA
	2012	0.85±0.15	±10%		C2012X7R2E332K085AA	C2012X7R2A332K085AA
			±20%		C2012X7R2E332M085AA	C2012X7R2A332M085AA
	3216	1.15±0.15	±10%	C3216X7R2J332K115AA		
			±20%	C3216X7R2J332M115AA		
4.7nF	1608	0.80±0.10	±10%			C1608X7R2A472K080AA
			±20%			C1608X7R2A472M080AA
	2012	0.85±0.15	±10%		C2012X7R2E472K085AA	C2012X7R2A472K085AA
			±20%		C2012X7R2E472M085AA	C2012X7R2A472M085AA
	3216	1.15±0.15	±10%	C3216X7R2J472K115AA		
			±20%	C3216X7R2J472M115AA		
6.8nF	1608	0.80±0.10	±10%			C1608X7R2A682K080AA
			±20%			C1608X7R2A682M080AA
	2012	0.85±0.15	±10%			C2012X7R2A682K085AA
			±20%			C2012X7R2A682M085AA
	3216	1.15±0.15	±10%	C3216X7R2J682K115AA		
			±20%	C3216X7R2J682M115AA		
10nF	1608	0.80±0.10	±10%			C1608X7R2A103K080AA
			±20%			C1608X7R2A103M080AA
	2012	0.85±0.15	±10%			C2012X7R2A103K085AA
			±20%			C2012X7R2A103M085AA
	3216	1.15±0.15	±10%	C3216X7R2J103K115AA		
			±20%	C3216X7R2J103M115AA		
15nF	1608	0.80±0.10	±10%			C1608X7R2A153K080AA
			±20%			C1608X7R2A153M080AA
	2012	1.25±0.20	±10%		C2012X7R2E153K125AA	C2012X7R2A153K125AA
			±20%		C2012X7R2E153M125AA	C2012X7R2A153M125AA
	3216	1.15±0.15	±10%	C3216X7R2E153K115AA		
			±20%	C3216X7R2E153M115AA		
3216	1.30±0.20	±10%	C3216X7R2J153K130AA			
		±20%	C3216X7R2J153M130AA			
22nF	1608	0.80±0.10	±10%			C1608X7R2A223K080AA
			±20%			C1608X7R2A223M080AA
	2012	1.25±0.20	±10%		C2012X7R2E223K125AA	C2012X7R2A223K125AA
			±20%		C2012X7R2E223M125AA	C2012X7R2A223M125AA
	3216	1.15±0.15	±10%	C3216X7R2E223K115AA		
			±20%	C3216X7R2E223M115AA		
3216	1.30±0.20	±10%	C3216X7R2J223K130AA			
		±20%	C3216X7R2J223M130AA			
33nF	2012	1.25±0.20	±10%			C2012X7R2A333K125AA
			±20%			C2012X7R2A333M125AA
	3216	1.15±0.15	±10%			C3216X7R2A333K115AA
			±20%			C3216X7R2A333M115AA
	3216	1.60±0.20	±10%	C3216X7R2J333K160AA	C3216X7R2E333K160AA	
			±20%	C3216X7R2J333M160AA	C3216X7R2E333M160AA	

■ Gray items: These products are not recommended for new designs.

⚠ Please be sure to request delivery specifications that provide further details on the features and specifications of the products for proper and safe use. Please note that the contents may change without any prior notice due to reasons such as upgrading.

## MULTILAYER CERAMIC CHIP CAPACITORS



## Capacitance range table

Temperature characteristic: X7R (-55 to +125°C, ±15%)

Capacitance	Dimensions	Thickness (mm)	Capacitance tolerance	Catalog number		
				Rated voltage Edc: 630V	Rated voltage Edc: 250V	Rated voltage Edc: 100V
47nF	2012	1.25±0.20	±10%			C2012X7R2A473K125AA
			±20%			C2012X7R2A473M125AA
	3216	1.15±0.15	±10%			C3216X7R2A473K115AA
			±20%			C3216X7R2A473M115AA
	3225	2.00±0.20	±10%	C3225X7R2J473K200AA	C3216X7R2E473K160AA	
			±20%	C3225X7R2J473M200AA	C3216X7R2E473M160AA	
68nF	2012	0.85±0.15	±10%			C2012X7R2A683K085AA
			±20%			C2012X7R2A683M085AA
	3216	1.60±0.20	±10%		C3216X7R2E683K160AA	C3216X7R2A683K160AA
			±20%		C3216X7R2E683M160AA	C3216X7R2A683M160AA
	3225	2.00±0.20	±10%	C3225X7R2J683K200AA		
			±20%	C3225X7R2J683M200AA		
4532	1.60±0.20	±10%	C4532X7R2J683K160KA			
		±20%	C4532X7R2J683M160KA			
100nF	2012	1.25±0.20	±10%			C2012X7R2A104K125AA
			±20%			C2012X7R2A104M125AA
	3216	1.60±0.20	±10%		C3216X7R2E104K160AA	C3216X7R2A104K160AA
			±20%		C3216X7R2E104M160AA	C3216X7R2A104M160AA
	3225	2.00±0.20	±10%		C3225X7R2E104K200AA	
			±20%		C3225X7R2E104M200AA	
4532	2.30±0.20	±10%	C4532X7R2J104K230KA			
		±20%	C4532X7R2J104M230KA			
150nF	3216	1.60±0.20	±10%			C3216X7R2A154K160AA
			±20%			C3216X7R2A154M160AA
	3225	2.00±0.20	±10%		C3225X7R2E154K200AA	
			±20%		C3225X7R2E154M200AA	
	4532	1.60±0.20	±10%		C4532X7R2E154K160KA	
			±20%		C4532X7R2E154M160KA	
5750	1.60±0.20	±10%	C5750X7R2J154K160KA			
		±20%	C5750X7R2J154M160KA			
220nF	3216	1.15±0.15	±10%			C3216X7R2A224K115AA
			±20%			C3216X7R2A224M115AA
	3225	2.00±0.20	±10%		C3225X7R2E224K200AA	
			±20%		C3225X7R2E224M200AA	
	4532	2.30±0.20	±10%		C4532X7R2E224K230KA	
			±20%		C4532X7R2E224M230KA	
5750	2.30±0.20	±10%	C5750X7R2J224K230KA			
		±20%	C5750X7R2J224M230KA			
330nF	3216	1.30±0.20	±10%			C3216X7R2A334K130AA
			±20%			C3216X7R2A334M130AA
	3225	2.00±0.20	±10%			C3225X7R2A334K200AA
			±20%			C3225X7R2A334M200AA
	4532	2.30±0.20	±10%		C4532X7R2E334K230KA	
			±20%		C4532X7R2E334M230KA	
5750	1.60±0.20	±10%		C5750X7R2E334K160KA		
		±20%		C5750X7R2E334M160KA		
470nF	3216	1.60±0.20	±10%			C3216X7R2A474K160AA
			±20%			C3216X7R2A474M160AA
	3225	2.00±0.20	±10%			C3225X7R2A474K200AA
			±20%			C3225X7R2A474M200AA
	4532	2.30±0.20	±10%		C4532X7R2E474K230KA	
			±20%		C4532X7R2E474M230KA	
5750	2.30±0.20	±10%		C5750X7R2E474K230KA		
		±20%		C5750X7R2E474M230KA		
680nF	3216	1.60±0.20	±10%			C3216X7R2A684K160AA
			±20%			C3216X7R2A684M160AA
	3225	1.60±0.20	±10%			C3225X7R2A684K160AA
			±20%			C3225X7R2A684M160AA
	4532	2.30±0.20	±10%			C4532X7R2A684K230KA
			±20%			C4532X7R2A684M230KA
5750	1.60±0.20	±10%			C5750X7R2A684K160KA	
		±20%			C5750X7R2A684M160KA	
5750	2.30±0.20	±10%			C5750X7R2E684K230KA	
		±20%			C5750X7R2E684M230KA	

■ Gray items: These products are not recommended for new designs.

⚠ Please be sure to request delivery specifications that provide further details on the features and specifications of the products for proper and safe use. Please note that the contents may change without any prior notice due to reasons such as upgrading.

## Capacitance range table

Temperature characteristic: X7R (–55 to +125°C, ±15%)

Capacitance	Dimensions	Thickness (mm)	Capacitance tolerance	Catalog number	
				Rated voltage Edc: 250V	Rated voltage Edc: 100V
1μF	3216	1.60±0.20	±10%		C3216X7R2A105K160AA
			±20%		C3216X7R2A105M160AA
	3225	2.00±0.20	±10%		C3225X7R2A105K200AA
			±20%		C3225X7R2A105M200AA
	4532	2.30±0.20	±10%		C4532X7R2A105K230KA
			±20%		C4532X7R2A105M230KA
5750	2.30±0.20	±10%	C5750X7R2E105K230KA	C5750X7R2A105K230KA	
		±20%	C5750X7R2E105M230KA	C5750X7R2A105M230KA	
1.5μF	3225	2.00±0.20	±10%		C3225X7R2A155K200AB
			±20%		C3225X7R2A155M200AB
	4532	2.30±0.20	±10%		C4532X7R2A155K230KA
			±20%		C4532X7R2A155M230KA
	5750	2.30±0.20	±10%		C5750X7R2A155K230KA
			±20%		C5750X7R2A155M230KA
2.2μF	3225	2.30±0.20	±10%		C3225X7R2A225K230AB
			±20%		C3225X7R2A225M230AB
	4532	2.30±0.20	±10%		C4532X7R2A225K230KA
			±20%		C4532X7R2A225M230KA
	5750	2.30±0.20	±10%		C5750X7R2A225K230KA
			±20%		C5750X7R2A225M230KA
3.3μF	5750	2.30±0.20	±10%		C5750X7R2A335K230KA
			±20%		C5750X7R2A335M230KA
4.7μF	5750	2.30±0.20	±10%		C5750X7R2A475K230KA
			±20%		C5750X7R2A475M230KA

■ Gray items: These products are not recommended for new designs.



## Capacitance range table

Temperature characteristic: X7S (-55 to +125°C, ±22%)

Capacitance	Dimensions	Thickness (mm)	Capacitance tolerance	Catalog number	
				Rated voltage	Edc: 100V
1nF	1005	0.50±0.05	±10%	C1005X7S2A102K050BB	
			±20%	C1005X7S2A102M050BB	
1.5nF	1005	0.50±0.05	±10%	C1005X7S2A152K050BB	
			±20%	C1005X7S2A152M050BB	
2.2nF	1005	0.50±0.05	±10%	C1005X7S2A222K050BB	
			±20%	C1005X7S2A222M050BB	
3.3nF	1005	0.50±0.05	±10%	C1005X7S2A332K050BB	
			±20%	C1005X7S2A332M050BB	
4.7nF	1005	0.50±0.05	±10%	C1005X7S2A472K050BB	
			±20%	C1005X7S2A472M050BB	
6.8nF	1005	0.50±0.05	±10%	C1005X7S2A682K050BB	
			±20%	C1005X7S2A682M050BB	
10nF	1005	0.50±0.05	±10%	C1005X7S2A103K050BB	
			±20%	C1005X7S2A103M050BB	
33nF	1608	0.80±0.10	±10%	C1608X7S2A333K080AB	
			±20%	C1608X7S2A333M080AB	
47nF	1608	0.80±0.10	±10%	C1608X7S2A473K080AB	
			±20%	C1608X7S2A473M080AB	
68nF	1608	0.80±0.10	±10%	C1608X7S2A683K080AB	
			±20%	C1608X7S2A683M080AB	
100nF	1608	0.80±0.10	±10%	C1608X7S2A104K080AB	
			±20%	C1608X7S2A104M080AB	
150nF	2012	0.85±0.15	±10%	C2012X7S2A154K085AB	
			±20%	C2012X7S2A154M085AB	
220nF	2012	0.85±0.15	±10%	C2012X7S2A224K085AB	
			±20%	C2012X7S2A224M085AB	
330nF	2012	1.25±0.20	±10%	C2012X7S2A334K125AB	
			±20%	C2012X7S2A334M125AB	
470nF	2012	1.25±0.20	±10%	C2012X7S2A474K125AB	
			±20%	C2012X7S2A474M125AB	
680nF	2012	1.25±0.20	±10%	C2012X7S2A684K125AB	
			±20%	C2012X7S2A684M125AB	
1µF	2012	1.25±0.20	±10%	C2012X7S2A105K125AB	
			±20%	C2012X7S2A105M125AB	
1.5µF	3216	1.60±0.20	±10%	C3216X7S2A155K160AB	
			±20%	C3216X7S2A155M160AB	
2.2µF	3216	1.60±0.20	±10%	C3216X7S2A225K160AB	
			±20%	C3216X7S2A225M160AB	
3.3µF	3216	1.60+0.30,-0.10	±10%	C3216X7S2A335K160AB	
			±20%	C3216X7S2A335M160AB	
	3225	2.00±0.20	±10%	C3225X7S2A335K200AB	
			±20%	C3225X7S2A335M200AB	
	4532	2.00±0.20	±10%	C4532X7S2A335K200KB	
			±20%	C4532X7S2A335M200KB	
4.7µF	3225	2.00±0.20	±10%	C3225X7S2A475K200AB	
			±20%	C3225X7S2A475M200AB	
6.8µF	5750	2.00±0.20	±10%	C4532X7S2A475K230KB	
			±20%	C4532X7S2A475M230KB	
10µF	5750	2.30±0.20	±10%	C5750X7S2A685K200KB	
			±20%	C5750X7S2A685M200KB	
15µF	5750	2.50±0.30	±10%	C5750X7S2A106K230KB	
			±20%	C5750X7S2A106M230KB	
22µF	5750	2.80±0.30	±10%	C5750X7S2A156K250KB	
			±20%	C5750X7S2A156M250KB	
22µF	5750	2.80±0.30	±10%	C5750X7S2A226K280KB	
			±20%	C5750X7S2A226M280KB	

■ Gray items: These products are not recommended for new designs.

# MULTILAYER CERAMIC CHIP CAPACITORS

## Capacitance range table

Temperature characteristic: X7T (−55 to +125°C, +22, −33%)

Capacitance	Dimensions	Thickness (mm)	Capacitance tolerance	Catalog number			
				Rated voltage Edc: 630V	Rated voltage Edc: 450V	Rated voltage Edc: 350V	Rated voltage Edc: 250V
10nF	2012	0.85±0.15	±10%		C2012X7T2W103K085AA	C2012X7T2V103K085AA	
			±20%		C2012X7T2W103M085AA	C2012X7T2V103M085AA	
10nF	3216	0.85±0.15	±10%	C3216X7T2J103K085AC			
			±20%	C3216X7T2J103M085AC			
15nF	2012	0.85±0.15	±10%		C2012X7T2W153K085AA	C2012X7T2V153K085AA	
			±20%		C2012X7T2W153M085AA	C2012X7T2V153M085AA	
15nF	3216	0.85±0.15	±10%	C3216X7T2J153K085AC			
			±20%	C3216X7T2J153M085AC			
22nF	2012	1.25±0.20	±10%		C2012X7T2W223K125AA	C2012X7T2V223K125AA	
			±20%		C2012X7T2W223M125AA	C2012X7T2V223M125AA	
22nF	3216	1.15±0.15	±10%	C3216X7T2J223K115AC			
			±20%	C3216X7T2J223M115AC			
33nF	2012	1.25±0.20	±10%		C2012X7T2W333K125AA	C2012X7T2V333K125AA	C2012X7T2E333K125AA
			±20%		C2012X7T2W333M125AA	C2012X7T2V333M125AA	C2012X7T2E333M125AA
33nF	3216	1.15±0.15	±10%	C3216X7T2J333K115AC			
			±20%	C3216X7T2J333M115AC			
47nF	2012	1.25±0.20	±10%		C2012X7T2W473K125AA	C2012X7T2V473K125AA	C2012X7T2E473K125AA
			±20%		C2012X7T2W473M125AA	C2012X7T2V473M125AA	C2012X7T2E473M125AA
47nF	3216	1.60±0.20	±10%	C3216X7T2J473K160AC			
			±20%	C3216X7T2J473M160AC			
68nF	2012	1.25±0.20	±10%				C2012X7T2E683K125AA
			±20%				C2012X7T2E683M125AA
68nF	3216	1.30±0.20	±10%		C3216X7T2W683K130AA	C3216X7T2V683K130AA	
			±20%		C3216X7T2W683M130AA	C3216X7T2V683M130AA	
100nF	2012	1.25±0.20	±10%				C2012X7T2E104K125AA
			±20%				C2012X7T2E104M125AA
100nF	3216	1.60±0.20	±10%		C3216X7T2W104K160AA	C3216X7T2V104K160AA	
			±20%		C3216X7T2W104M160AA	C3216X7T2V104M160AA	
100nF	3225	1.60±0.20	±10%	C3225X7T2J104K160AC			
			±20%	C3225X7T2J104M160AC			
150nF	3216	1.30±0.20	±10%				C3216X7T2E154K130AA
			±20%				C3216X7T2E154M130AA
150nF	3225	2.00±0.20	±10%	C3225X7T2J154K200AC			
			±20%	C3225X7T2J154M200AC			
150nF	4532	1.60±0.20	±10%	C4532X7T2J154K160KC			
			±20%	C4532X7T2J154M160KC			
220nF	3216	1.60±0.20	±10%				C3216X7T2E224K160AA
			±20%				C3216X7T2E224M160AA
220nF	3225	2.00±0.20	±10%		C3225X7T2W224K200AA		
			±20%		C3225X7T2W224M200AA		
220nF	4532	2.00±0.20	±10%	C4532X7T2J224K200KC			
			±20%	C4532X7T2J224M200KC			
300nF	4532	2.50±0.30	±10%	C4532X7T2J304K250KA			
			±20%	C4532X7T2J304M250KA			
330nF	3225	2.00±0.20	±10%				C3225X7T2E334K200AA
			±20%				C3225X7T2E334M200AA
330nF	4532	1.60±0.20	±10%		C4532X7T2W334K160KA		
			±20%		C4532X7T2W334M160KA		
330nF	5750	2.00±0.20	±10%	C5750X7T2J334K200KC			
			±20%	C5750X7T2J334M200KC			
470nF	4532	2.30±0.20	±10%		C4532X7T2W474K230KA		
			±20%		C4532X7T2W474M230KA		
470nF	5750	2.50±0.30	±10%	C5750X7T2J474K250KC			
			±20%	C5750X7T2J474M250KC			
680nF	4532	1.60±0.20	±10%				C4532X7T2E684K160KA
			±20%				C4532X7T2E684M160KA
680nF	5750	2.00±0.20	±10%		C5750X7T2W684K200KA		
			±20%		C5750X7T2W684M200KA		
1µF	4532	2.50±0.30	±10%				C4532X7T2E105K250KA
			±20%				C4532X7T2E105M250KA
1µF	5750	2.50±0.30	±10%		C5750X7T2W105K250KA		
			±20%		C5750X7T2W105M250KA		
1.5µF	5750	2.00±0.20	±10%				C5750X7T2E155K200KA
			±20%				C5750X7T2E155M200KA
2.2µF	5750	2.50±0.30	±10%				C5750X7T2E225K250KA
			±20%				C5750X7T2E225M250KA

■ Gray items: These products are not recommended for new designs.

⚠ Please be sure to request delivery specifications that provide further details on the features and specifications of the products for proper and safe use. Please note that the contents may change without any prior notice due to reasons such as upgrading.

## X-ON Electronics

Largest Supplier of Electrical and Electronic Components

*Click to view similar products for [Multilayer Ceramic Capacitors MLCC - SMD/SMT](#) category:*

*Click to view products by [TDK](#) manufacturer:*

Other Similar products are found below :

[M39014/01-1467](#) [M39014/02-1218V](#) [M39014/02-1225V](#) [M39014/02-1262V](#) [M39014/02-1301](#) [M39014/22-0631](#) [1210J5000102JCT](#)  
[1210J2K00102KXT](#) [1210J5000103KXT](#) [1210J5000223KXT](#) [D55342E07B379BR-TR](#) [D55342E07B523DR-T/R](#) [1812J1K00103KXT](#)  
[1812J1K00473KXT](#) [1812J2K00680JCT](#) [1812J4K00102MXT](#) [1812J5000102JCT](#) [1812J5000103JCT](#) [1812J5000682JCT](#) [NIN-FB391JTRF](#)  
[NIN-FC2R7JTRF](#) [NPIS27H102MTRF](#) [C1206C101J1GAC](#) [C1608C0G1E472JT000N](#) [C2012C0G2A472J](#) [2220J2K00101JCT](#)  
[KHC201E225M76N0T00](#) [LRC-LRF1206LF-01R025FTR1K](#) [1812J1K00222JCT](#) [1812J2K00102KXT](#) [1812J2K00222KXT](#)  
[1812J2K00472KXT](#) [2-1622820-7-CUT-TAPE](#) [2220J3K00102KXT](#) [2225J2500824KXT](#) [CCR07CG103KM](#) [CGA2B2C0G1H010C](#)  
[CGA2B2C0G1H040C](#) [CGA2B2C0G1H050C](#) [CGA2B2C0G1H060D](#) [CGA2B2C0G1H070D](#) [CGA2B2C0G1H151J](#) [CGA2B2C0G1H1R5C](#)  
[CGA2B2C0G1H2R2C](#) [CGA2B2C0G1H3R3C](#) [CGA2B2C0G1H680J](#) [CGA2B2C0G1H6R8D](#) [CGA2B2X8R1H221K](#) [CGA2B2X8R1H472K](#)  
[CGA3E1X7R1C474K](#)