

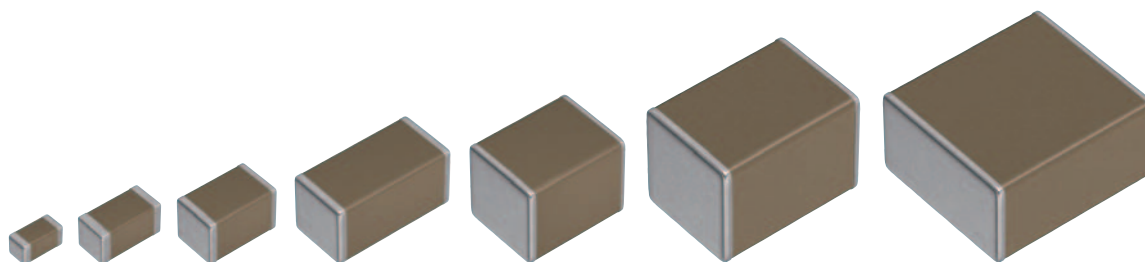
积层贴片陶瓷片式电容器

车载等级，中耐压 (100 to 630V)

CGA系列

| | |
|------|------------------|
| CGA2 | 1005 [0402 inch] |
| CGA3 | 1608 [0603 inch] |
| CGA4 | 2012 [0805 inch] |
| CGA5 | 3216 [1206 inch] |
| CGA6 | 3225 [1210 inch] |
| CGA8 | 4532 [1812 inch] |
| CGA9 | 5750 [2220 inch] |

* 表示尺寸代码。JIS[EIA]

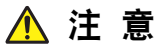


使用注意事项

在使用本产品前，请务必随附采购规格书。

安全注意事项

使用本产品时，请注意安全事项。



注意

1. 本目录中的产品，被装载到汽车上或车载产品，按照本目录中记载的范围、条件，可使用在汽车标准用途中。另外，包含本产品的该汽车或车用产品，应以通常的操作、使用方法来运用。

汽车以外、对于需要高度安全性和可靠性的，或者设备的故障，误动作，运转不良可能会给人的生命，身体及财产等造成损害，以及有可能产生莫大社会影响的以下用途（以下称‘特定用途’）中的适用性，性能发挥，品质，本公司不予保证。

因用于超过本目录所规定的范围、条件，或用于其他特定用途而产生损失、伤害等情况，我司恕不承担责任，请谅解。客户预定在本产品目录的范围，条件之外，或者在特定用途中使用，请事先咨询本公司相关部门。本公司会配合客户需求，一起协商不同于本产品目录中所记载的使用用途。

- | | |
|----------------------------|--------------------|
| (1) 航空，航天设备 | (8) 公共性的高度信息处理设备 |
| (2) 运输设备（电车，船舶等） | (9) 军用设备 |
| (3) 医疗设备（除《药事法》分类中的Ⅰ、Ⅱ级以外） | (10) 电热用品，燃烧设备 |
| (4) 发电控制设备 | (11) 防灾防盗设备 |
| (5) 核动力相关设备 | (12) 各种安全装置 |
| (6) 海底设备 | (13) 其他被认定为特定用途的用途 |
| (7) 交通工具控制设备 | |

此外，在对使用本产品的设备进行设计时，请根据该设备的使用用途及状态确保保护电路及装置，并设置备份电路。

另外，虽然本产品目录中记载的产品是设想在上述汽车或车用产品上使用的，但我们也不会禁止其使用在不要求类似汽车等级的高安全性和信赖性，或对生命、身体、财产，及对社会造成影响较小的一般电子设备的应用情形。因此，本产品目录中记载的产品可应用一般电子设备的通用标准，当以通常的操作、使用方法来使用一般电子设备时，关于其使用也适用本共通使用注意事项。

2. 本产品目录中记载的产品因改良及其他原因可能在不经预告的情况下进行变更或停止供应。
3. 关于本产品目录中记载的产品，本公司备有记载了各产品的规格及安全注意事项的“交货规格书”。在选用产品时，建议签定交货规格书。
4. 在出口本产品目录中记载的产品时，有时会被归为“外汇及外贸管理法”中规定的管制货物等。在这种情况下，需要有依据该法规定的出口许可。
5. 关于本产品目录的内容，未经本公司许可不得擅自转载或复制。
6. 因使用本产品目录中记载的产品而发生涉及本公司或第三者的知识产权及其他权利的问题时，本公司对此将不承担责任。并且，本公司不对该等权利的実施权办理许可。
7. 本产品目录适用于从本公司或本公司的正规代理商购买的产品。从其他第三者购买的产品不在适用范围之内。

注意：伴随网站的更新，由于系统限制的原因以及统一产品目录型号的需要，从2013年1月开始，TDK将在产品目录中使用新型号。新目录型号将在以后所有根据产品目录订货时使用，但不适用于OEM订购。目录型号的最后5位数与产品标签上的交货型号（内部控制编号）不同，请注意。详细信息请联系当地TDK销售代表。

（例）

| 产品目录发行日期 | 目录型号 | 交货型号（交货标签上的标识） |
|------------|-----------------------|---------------------|
| 2012年12月以前 | C1608C0G1E103J(080AA) | C1608C0G1E103JT000N |
| 2013年1月及以后 | C1608C0G1E103J080AA | C1608C0G1E103JT000N |

CGA 系列

中耐压 (100 to 630V)



Type: CGA2/1005 [0402 inch], CGA3/1608 [0603 inch], CGA4/2012 [0805 inch],
CGA5/3216 [1206 inch], CGA6/3225 [1210 inch], CGA8/4532 [1812 inch], CGA9/5750 [2220 inch]

系列概要

TDK叠层陶瓷贴片电容的车载级CGA系列中的中耐压产品，额定电压为100~630V，可应对电路中的较高压场景。其最大容量可达到15 μ F。

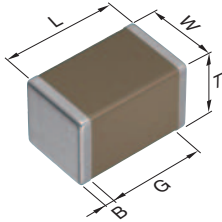
特点

- 4种额定电压: 100V、250V、450V、630V
- 使用温度范围: -55~+125°C
- 温度特性和偏压特性稳定的COG品也可以对应。
- 符合AEC-Q200车载标准。

应用

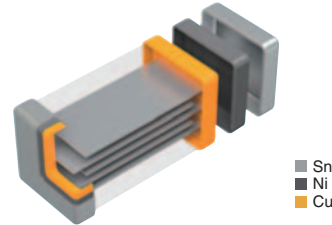
- 无线充电单元、DC-DC Converter、Inverter、OBC等
- 高电压电路中的去耦、平滑、缓冲、谐振回路等。

形状与尺寸



| | |
|---|------|
| L | 主体长度 |
| W | 主体宽度 |
| T | 主体高度 |
| B | 端子宽度 |
| G | 端子间距 |

产品构造图



诱导体和内部电极交互叠层构造。利用单片回路的简单设计，拥有更优越的机械强度和更好的频率特性。

Dimensions in mm

| Type | L | W | T | B | G |
|------|-----------|-----------|-----------|-----------|-----------|
| CGA2 | 1.00±0.05 | 0.50±0.05 | 0.50±0.05 | 0.10 min. | 0.30 min. |
| CGA3 | 1.60±0.10 | 0.80±0.10 | 0.80±0.10 | 0.20 min. | 0.30 min. |
| CGA4 | 2.00±0.20 | 1.25±0.20 | 1.25±0.20 | 0.20 min. | 0.50 min. |
| CGA5 | 3.20±0.20 | 1.60±0.20 | 1.60±0.20 | 0.20 min. | 1.00 min. |
| CGA6 | 3.20±0.40 | 2.50±0.30 | 2.50±0.30 | 0.20 min. | — |
| CGA8 | 4.50±0.40 | 3.20±0.40 | 2.50±0.30 | 0.20 min. | — |
| CGA9 | 5.70±0.40 | 5.00±0.40 | 2.50±0.30 | 0.20 min. | — |

* 尺寸公差是代表价值。

■ 目录型号的识别法

| | | | | | | | | | | |
|------------|----------|----------|----------|------------|-----------|------------|----------|------------|----------|----------|
| CGA | 9 | P | 3 | X7S | 2A | 156 | M | 250 | K | B |
| (1) | (2) | (3) | (4) | (5) | (6) | (7) | (8) | (9) | (10) | (11) |

(1) 系列名称

(2) 尺寸 L x W (mm)

| 代码 | EIA | 长度 | 宽度 | 端子宽度 |
|----|--------|------|------|------|
| 2 | CC0402 | 1.00 | 0.50 | 0.10 |
| 3 | CC0603 | 1.60 | 0.80 | 0.20 |
| 4 | CC0805 | 2.00 | 1.25 | 0.20 |
| 5 | CC1206 | 3.20 | 1.60 | 0.20 |
| 6 | CC1210 | 3.20 | 2.50 | 0.20 |
| 8 | CC1812 | 4.50 | 3.20 | 0.20 |
| 9 | CC2220 | 5.70 | 5.00 | 0.20 |

(3) 厚度代码

| 代码 | 产品厚度 |
|----|---------|
| B | 0.50 mm |
| C | 0.60 mm |
| E | 0.80 mm |
| F | 0.85 mm |
| H | 1.15 mm |
| J | 1.25 mm |
| K | 1.30 mm |
| L | 1.60 mm |
| M | 2.00 mm |
| N | 2.30 mm |
| P | 2.50 mm |
| Q | 2.80 mm |
| R | 3.20 mm |

(4) 寿命试验的电压条件

| 代码 | 条件 |
|----|------------|
| 1 | 1 × R.V. |
| 2 | 2 × R.V. |
| 3 | 1.5 × R.V. |
| 4 | 1.2 × R.V. |

(5) 温度特性

| 温度特性 | 温度系数或电容变化率 | 温度范围 |
|------|-------------|---------------|
| C0G | 0±30 ppm/°C | -55 to +125°C |
| X7R | ±15% | -55 to +125°C |
| X7S | ±22% | -55 to +125°C |
| X7T | +22, -33% | -55 to +125°C |

(6) 额定电压 (DC)

| 代码 | 电压 (DC) |
|----|---------|
| 2A | 100V |
| 2E | 250V |
| 2W | 450V |
| 2J | 630V |

(7) 标称电容 (pF)

电容量以 pF (微微法拉) 为单位, 并用三个文字表示。最初两个文字表示电容的第一位和第二位有效数字。第三个文字表示接在有效数字后的零的个数。含有小数点时用 R 表示。

(例) 0R5 = 0.5pF
101 = 100pF
225 = 2,200,000pF = 2.2μF

(8) 电容容差

| 代码 | 容差 |
|----|---------|
| C | ±0.25pF |
| D | ±0.50pF |
| J | ±5% |
| K | ±10% |
| M | ±20% |

(9) 厚度

| 代码 | 产品厚度 |
|-----|---------|
| 050 | 0.50 mm |
| 060 | 0.60 mm |
| 080 | 0.80 mm |
| 085 | 0.85 mm |
| 115 | 1.15 mm |
| 125 | 1.25 mm |
| 130 | 1.30 mm |
| 160 | 1.60 mm |
| 200 | 2.00 mm |
| 230 | 2.30 mm |
| 250 | 2.50 mm |
| 280 | 2.80 mm |
| 320 | 3.20 mm |

(10) 包装形式

| 代码 | 形式 |
|----|-----------------|
| A | 178mm 卷筒、4mm 间距 |
| B | 178mm 卷筒、2mm 间距 |
| K | 178mm 卷筒、8mm 间距 |

(11) 特殊指定代码


| 代码 | 内容 |
|---------|-----------|
| A,B,C,N | 本公司内部管理符号 |

电容范围图

CGA2/1005 [0402 inch]

| 电容 | | COG | X7S |
|--------|-----|--------------|--------------|
| (pF) | 代码 | 2A (100V) | 2A (100V) |
| 100 | 101 | | |
| 120 | 121 | | |
| 150 | 151 | | |
| 180 | 181 | | |
| 220 | 221 | | |
| 270 | 271 | | |
| 330 | 331 | | |
| 390 | 391 | | |
| 470 | 471 | | |
| 560 | 561 | | |
| 680 | 681 | | |
| 820 | 821 | | |
| 1,000 | 102 | | |
| 1,500 | 152 | | |
| 2,200 | 222 | | |
| 3,300 | 332 | | |
| 4,700 | 472 | | |
| 6,800 | 682 | | |
| 10,000 | 103 | | |

标准厚度  0.50mm

 灰色涂层的品名，为新规设计非推荐品。

■关于产品厚度，静电容量公差等详细信息，请参照 P-11 以后的静电容量范围表。

电容范围图

CGA3/1608 [0603 inch]

| 电容 | | C0G | | X7R | X7S |
|---------|-----|--------------|--------------|--------------|--------------|
| (pF) | 代码 | 2E (250V) | 2A (100V) | 2A (100V) | 2A (100V) |
| 1 | 010 | | | | |
| 1.5 | 1R5 | | | | |
| 2 | 020 | | | | |
| 2.2 | 2R2 | | | | |
| 3 | 030 | | | | |
| 3.3 | 3R3 | | | | |
| 4 | 040 | | | | |
| 4.7 | 4R7 | | | | |
| 5 | 050 | | | | |
| 6 | 060 | | | | |
| 6.8 | 6R8 | | | | |
| 7 | 070 | | | | |
| 8 | 080 | | | | |
| 9 | 090 | | | | |
| 10 | 100 | | | | |
| 12 | 120 | | | | |
| 15 | 150 | | | | |
| 18 | 180 | | | | |
| 22 | 220 | | | | |
| 27 | 270 | | | | |
| 33 | 330 | | | | |
| 39 | 390 | | | | |
| 47 | 470 | | | | |
| 56 | 560 | | | | |
| 68 | 680 | | | | |
| 82 | 820 | | | | |
| 100 | 101 | | | | |
| 120 | 121 | | | | |
| 150 | 151 | | | | |
| 180 | 181 | | | | |
| 220 | 221 | | | | |
| 270 | 271 | | | | |
| 330 | 331 | | | | |
| 390 | 391 | | | | |
| 470 | 471 | | | | |
| 560 | 561 | | | | |
| 680 | 681 | | | | |
| 820 | 821 | | | | |
| 1,000 | 102 | | | | |
| 1,200 | 122 | | | | |
| 1,500 | 152 | | | | |
| 1,800 | 182 | | | | |
| 2,200 | 222 | | | | |
| 2,700 | 272 | | | | |
| 3,300 | 332 | | | | |
| 3,900 | 392 | | | | |
| 4,700 | 472 | | | | |
| 5,600 | 562 | | | | |
| 6,800 | 682 | | | | |
| 8,200 | 822 | | | | |
| 10,000 | 103 | | | | |
| 15,000 | 153 | | | | |
| 22,000 | 223 | | | | |
| 33,000 | 333 | | | | |
| 47,000 | 473 | | | | |
| 68,000 | 683 | | | | |
| 100,000 | 104 | | | | |

标准厚度  0.80mm 灰色涂层的品名, 为新规设计非推荐品。

■关于产品厚度, 静电容量公差等详细信息, 请参照 P-11 以后的静电容量范围表。

⚠ 为了能够更加正确、安全地使用产品, 请务必索取能进一步确认详细特性、规格的采购规格书。
 记载内容可能因为产品改良等原因不经预告而更改, 恕不另行通知。

电容范围图

CGA4/2012 [0805 inch]

| 电容 | | C0G | | | X7R | | X7S | X7T | |
|-----------|-----|--------------|--------------|--------------|--------------|--------------|--------------|--------------|--------------|
| (pF) | 代码 | 2W (450V) | 2E (250V) | 2A (100V) | 2E (250V) | 2A (100V) | 2A (100V) | 2W (450V) | 2E (250V) |
| 100 | 101 | ■ | | ■ | | | | | |
| 120 | 121 | ■ | | | | | | | |
| 150 | 151 | ■ | | | | | | | |
| 180 | 181 | ■ | | | | | | | |
| 220 | 221 | ■ | | ■ | | | | | |
| 270 | 271 | ■ | | | | | | | |
| 330 | 331 | ■ | | | | | | | |
| 390 | 391 | ■ | | ■ | | | | | |
| 470 | 471 | ■ | | ■ | | | | | |
| 560 | 561 | ■ | | | | | | | |
| 680 | 681 | ■ | | | | | | | |
| 820 | 821 | ■ | ■ | | | | | | |
| 1,000 | 102 | ■ | ■ | ■ | | | | | |
| 1,200 | 122 | ■ | ■ | ■ | | | | | |
| 1,500 | 152 | ■ | ■ | ■ | | | | | |
| 1,800 | 182 | ■ | ■ | ■ | | | | | |
| 2,200 | 222 | ■ | ■ | ■ | | | | | |
| 2,700 | 272 | ■ | ■ | ■ | | | | | |
| 3,300 | 332 | ■ | ■ | ■ | | | | | |
| 3,900 | 392 | ■ | ■ | ■ | | | | | |
| 4,700 | 472 | ■ | ■ | ■ | | | | | |
| 5,600 | 562 | ■ | ■ | ■ | ■ | | | | |
| 6,800 | 682 | ■ | ■ | ■ | ■ | ■ | | | |
| 8,200 | 822 | ■ | ■ | ■ | ■ | ■ | | | |
| 10,000 | 103 | ■ | ■ | ■ | ■ | ■ | ■ | | |
| 15,000 | 153 | ■ | ■ | ■ | ■ | ■ | ■ | ■ | |
| 22,000 | 223 | ■ | ■ | ■ | ■ | ■ | ■ | ■ | ■ |
| 33,000 | 333 | ■ | ■ | ■ | ■ | ■ | ■ | ■ | ■ |
| 47,000 | 473 | ■ | ■ | ■ | ■ | ■ | ■ | ■ | ■ |
| 68,000 | 683 | ■ | ■ | ■ | ■ | ■ | ■ | ■ | ■ |
| 100,000 | 104 | ■ | ■ | ■ | ■ | ■ | ■ | ■ | ■ |
| 330,000 | 334 | ■ | ■ | ■ | ■ | ■ | ■ | ■ | ■ |
| 470,000 | 474 | ■ | ■ | ■ | ■ | ■ | ■ | ■ | ■ |
| 680,000 | 684 | ■ | ■ | ■ | ■ | ■ | ■ | ■ | ■ |
| 1,000,000 | 105 | ■ | ■ | ■ | ■ | ■ | ■ | ■ | ■ |

标准厚度 ■ 0.60 mm ■ 0.85 mm ■ 1.25 mm

■ 灰色涂层的品名，为新规设计非推荐品。

■ 关于产品厚度，静电容量公差等详细信息，请参照P-11以后的静电容量范围表。

电容范围图

CGA5/3216 [1206 inch]

| 电容 | | C0G | | | | X7R | | | X7S | X7T | | |
|-----------|-----|--------------|--------------|--------------|--------------|--------------|--------------|--------------|--------------|--------------|--------------|--------------|
| (pF) | 代码 | 2J (630V) | 2W (450V) | 2E (250V) | 2A (100V) | 2J (630V) | 2E (250V) | 2A (100V) | 2A (100V) | 2J (630V) | 2W (450V) | 2E (250V) |
| 100 | 101 | | | | | | | | | | | |
| 120 | 121 | | | | | | | | | | | |
| 150 | 151 | | | | | | | | | | | |
| 180 | 181 | | | | | | | | | | | |
| 220 | 221 | | | | | | | | | | | |
| 270 | 271 | | | | | | | | | | | |
| 330 | 331 | | | | | | | | | | | |
| 390 | 391 | | | | | | | | | | | |
| 470 | 471 | | | | | | | | | | | |
| 560 | 561 | | | | | | | | | | | |
| 680 | 681 | | | | | | | | | | | |
| 820 | 821 | | | | | | | | | | | |
| 1,000 | 102 | | | | | | | | | | | |
| 1,200 | 122 | | | | | | | | | | | |
| 1,500 | 152 | | | | | | | | | | | |
| 1,800 | 182 | | | | | | | | | | | |
| 2,200 | 222 | | | | | | | | | | | |
| 2,700 | 272 | | | | | | | | | | | |
| 3,300 | 332 | | | | | | | | | | | |
| 3,900 | 392 | | | | | | | | | | | |
| 4,700 | 472 | | | | | | | | | | | |
| 5,600 | 562 | | | | | | | | | | | |
| 6,800 | 682 | | | | | | | | | | | |
| 8,200 | 822 | | | | | | | | | | | |
| 10,000 | 103 | | | | | | | | | | | |
| 15,000 | 153 | | | | | | | | | | | |
| 22,000 | 223 | | | | | | | | | | | |
| 33,000 | 333 | | | | | | | | | | | |
| 47,000 | 473 | | | | | | | | | | | |
| 68,000 | 683 | | | | | | | | | | | |
| 100,000 | 104 | | | | | | | | | | | |
| 150,000 | 154 | | | | | | | | | | | |
| 220,000 | 224 | | | | | | | | | | | |
| 330,000 | 334 | | | | | | | | | | | |
| 470,000 | 474 | | | | | | | | | | | |
| 680,000 | 684 | | | | | | | | | | | |
| 1,000,000 | 105 | | | | | | | | | | | |
| 1,500,000 | 155 | | | | | | | | | | | |
| 2,200,000 | 225 | | | | | | | | | | | |
| 3,300,000 | 335 | | | | | | | | | | | |

标准厚度  0.60 mm  0.85 mm  1.15 mm  1.30 mm  1.60 mm

 灰色涂层的品名，为新规设计非推荐品。

■关于产品厚度，静电容量公差等详细信息，请参照P-11以后的静电容量范围表。

电容范围图

CGA6/3225 [1210 inch]

| 电容 | | C0G | | | | X7R | | | X7S | X7T | | |
|-----------|-----|--------------|--------------|--------------|--------------|--------------|--------------|--------------|--------------|--------------|--------------|--------------|
| (pF) | 代码 | 2J (630V) | 2W (450V) | 2E (250V) | 2A (100V) | 2J (630V) | 2E (250V) | 2A (100V) | 2A (100V) | 2J (630V) | 2W (450V) | 2E (250V) |
| 3,900 | 392 | ■ | | | | | | | | | | |
| 4,700 | 472 | ■ | | | | | | | | | | |
| 5,600 | 562 | ■ | | | | | | | | | | |
| 6,800 | 682 | ■ | | | | | | | | | | |
| 8,200 | 822 | ■ | | | | | | | | | | |
| 10,000 | 103 | ■ | | ■ | | | | | | | | |
| 15,000 | 153 | ■ | | ■ | ■ | | | | | | | |
| 22,000 | 223 | ■ | ■ | ■ | ■ | | | | | | | |
| 33,000 | 333 | ■ | ■ | ■ | ■ | | | | | | | |
| 47,000 | 473 | | | ■ | ■ | ■ | | | | | | |
| 68,000 | 683 | | | | ■ | ■ | | | | | | |
| 100,000 | 104 | | | | | | ■ | | | ■ | | |
| 150,000 | 154 | | | | | | ■ | | | ■ | | |
| 220,000 | 224 | | | | | | ■ | | | ■ | ■ | |
| 330,000 | 334 | | | | | | | ■ | | | | ■ |
| 470,000 | 474 | | | | | | | ■ | | | | |
| 680,000 | 684 | | | | | | | ■ | | | | |
| 1,000,000 | 105 | | | | | | | ■ | | | | |
| 1,500,000 | 155 | | | | | | | ■ | | | | |
| 2,200,000 | 225 | | | | | | | ■ | | | | |
| 3,300,000 | 335 | | | | | | | ■ | ■ | | | |
| 4,700,000 | 475 | | | | | | | ■ | ■ | | | |

标准厚度 ■ 1.25 mm ■ 1.60 mm ■ 2.00 mm ■ 2.30 mm ■ 2.50 mm

■ 灰色涂层的品名，为新规设计非推荐品。

■ 关于产品厚度，静电容量公差等详细信息，请参照P-11以后的静电容量范围表。

电容范围图

CGA8/4532 [1812 inch]

| 电容 | | C0G | | | | X7R | | | X7S | X7T | | |
|-----------|-----|-----------|-----------|-----------|-----------|-----------|-----------|-----------|-----------|-----------|-----------|-----------|
| (pF) | 代码 | 2J (630V) | 2W (450V) | 2E (250V) | 2A (100V) | 2J (630V) | 2E (250V) | 2A (100V) | 2A (100V) | 2J (630V) | 2W (450V) | 2E (250V) |
| 8,200 | 822 | ■ | | | | | | | | | | |
| 10,000 | 103 | ■ | | | | | | | | | | |
| 15,000 | 153 | ■ | | | | | | | | | | |
| 22,000 | 223 | ■ | | | | | | | | | | |
| 33,000 | 333 | ■ | | | | | | | | | | |
| 47,000 | 473 | ■ | ■ | | | | | | | | | |
| 68,000 | 683 | ■ | ■ | ■ | | | | | | | | |
| 100,000 | 104 | | | ■ | ■ | ■ | | | | | | |
| 150,000 | 154 | | | | | ■ | | | | ■ | | |
| 220,000 | 224 | | | | | ■ | | | | ■ | | |
| 330,000 | 334 | | | | | | | | | | ■ | |
| 470,000 | 474 | | | | | | | | | | ■ | |
| 680,000 | 684 | | | | | | | | | | ■ | ■ |
| 1,000,000 | 105 | | | | | | | | | | | ■ |
| 1,500,000 | 155 | | | | | | | | | | | ■ |
| 2,200,000 | 225 | | | | | | | | | | | ■ |
| 3,300,000 | 335 | | | | | | | | | | | ■ |
| 4,700,000 | 475 | | | | | | | | | | | ■ |

标准厚度 ■ 1.60 mm ■ 2.00 mm ■ 2.30 mm ■ 2.50 mm ■ 3.20 mm

■ 灰色涂层的品名, 为新规设计非推荐品。

■ 关于产品厚度, 静电容量公差等详细信息, 请参照P-11以后的静电容量范围表。

电容范围图

CGA9/5750 [2220 inch]

| 电容 | | C0G | | | | X7R | | | X7S | X7T | | |
|------------|-----|-----------|-----------|-----------|-----------|-----------|-----------|-----------|-----------|-----------|-----------|-----------|
| (pF) | 代码 | 2J (630V) | 2W (450V) | 2E (250V) | 2A (100V) | 2J (630V) | 2E (250V) | 2A (100V) | 2A (100V) | 2J (630V) | 2W (450V) | 2E (250V) |
| 68,000 | 683 | ■ | | | | | | | | | | |
| 100,000 | 104 | ■ | ■ | | | | | | | | | |
| 150,000 | 154 | | | ■ | ■ | ■ | | | | | | |
| 220,000 | 224 | | | | | ■ | | | | | | |
| 330,000 | 334 | | | | | | | | | ■ | | |
| 470,000 | 474 | | | | | | | | | ■ | | |
| 680,000 | 684 | | | | | | | | | | ■ | |
| 1,000,000 | 105 | | | | | | | | | | ■ | |
| 1,500,000 | 155 | | | | | | | | | | ■ | |
| 2,200,000 | 225 | | | | | | | | | | ■ | |
| 3,300,000 | 335 | | | | | | | | | | ■ | |
| 4,700,000 | 475 | | | | | | | | | | ■ | |
| 6,800,000 | 685 | | | | | | | | | | ■ | |
| 10,000,000 | 106 | | | | | | | | | | ■ | |
| 15,000,000 | 156 | | | | | | | | | | ■ | |

标准厚度 ■ 1.60 mm ■ 2.00 mm ■ 2.30 mm ■ 2.50 mm ■ 2.80 mm

■ 灰色涂层的品名, 为新规设计非推荐品。

■ 关于产品厚度, 静电容量公差等详细信息, 请参照P-11以后的静电容量范围表。

⚠ 为了能够更加正确、安全地使用产品, 请务必索取能进一步确认详细特性、规格的采购规格书。
记载内容可能因为产品改良等原因不经预告而更改, 恕不另行通知。

MULTILAYER CERAMIC CHIP CAPACITORS



电容范围表

温度特性: C0G (-55 to +125°C、0±30ppm/°C)

| 电容 | 尺寸 | 厚度 (mm) | 电容容差 | 目录型号 | | | |
|-------|------|------------|---------|----------------------|----------------|----------------------|----------------------|
| | | | | 额定电压 Edc: 630V | 额定电压 Edc: 450V | 额定电压 Edc: 250V | 额定电压 Edc: 100V |
| 1pF | 1608 | 0.80±0.10 | ±0.25pF | | | | CGA3E2C0G2A010C080AA |
| 1.5pF | 1608 | 0.80±0.10 | ±0.25pF | | | | CGA3E2C0G2A1R5C080AA |
| 2pF | 1608 | 0.80±0.10 | ±0.25pF | | | | CGA3E2C0G2A020C080AA |
| 2.2pF | 1608 | 0.80±0.10 | ±0.25pF | | | | CGA3E2C0G2A2R2C080AA |
| 3pF | 1608 | 0.80±0.10 | ±0.25pF | | | | CGA3E2C0G2A030C080AA |
| 3.3pF | 1608 | 0.80±0.10 | ±0.25pF | | | | CGA3E2C0G2A3R3C080AA |
| 4pF | 1608 | 0.80±0.10 | ±0.25pF | | | | CGA3E2C0G2A040C080AA |
| 4.7pF | 1608 | 0.80±0.10 | ±0.25pF | | | | CGA3E2C0G2A4R7C080AA |
| 5pF | 1608 | 0.80±0.10 | ±0.25pF | | | | CGA3E2C0G2A050C080AA |
| 6pF | 1608 | 0.80±0.10 | ±0.50pF | | | | CGA3E2C0G2A060D080AA |
| 6.8pF | 1608 | 0.80±0.10 | ±0.50pF | | | | CGA3E2C0G2A6R8D080AA |
| 7pF | 1608 | 0.80±0.10 | ±0.50pF | | | | CGA3E2C0G2A070D080AA |
| 8pF | 1608 | 0.80±0.10 | ±0.50pF | | | | CGA3E2C0G2A080D080AA |
| 9pF | 1608 | 0.80±0.10 | ±0.50pF | | | | CGA3E2C0G2A090D080AA |
| 10pF | 1608 | 0.80±0.10 | ±0.50pF | | | | CGA3E2C0G2A100D080AA |
| 12pF | 1608 | 0.80±0.10 | ±5% | | | | CGA3E2C0G2A120J080AA |
| 15pF | 1608 | 0.80±0.10 | ±5% | | | | CGA3E2C0G2A150J080AA |
| 18pF | 1608 | 0.80±0.10 | ±5% | | | | CGA3E2C0G2A180J080AA |
| 22pF | 1608 | 0.80±0.10 | ±5% | | | | CGA3E2C0G2A220J080AA |
| 27pF | 1608 | 0.80±0.10 | ±5% | | | | CGA3E2C0G2A270J080AA |
| 33pF | 1608 | 0.80±0.10 | ±5% | | | | CGA3E2C0G2A330J080AA |
| 39pF | 1608 | 0.80±0.10 | ±5% | | | | CGA3E2C0G2A390J080AA |
| 47pF | 1608 | 0.80±0.10 | ±5% | | | | CGA3E2C0G2A470J080AA |
| 56pF | 1608 | 0.80±0.10 | ±5% | | | | CGA3E2C0G2A560J080AA |
| 68pF | 1608 | 0.80±0.10 | ±5% | | | | CGA3E2C0G2A680J080AA |
| 82pF | 1608 | 0.80±0.10 | ±5% | | | | CGA3E2C0G2A820J080AA |
| 100pF | 1005 | 0.50±0.05 | ±5% | | | | CGA2B2C0G2A101J050BA |
| | 1608 | 0.80±0.10 | ±5% | | | CGA3E3C0G2E101J080AA | CGA3E2C0G2A101J080AA |
| | 2012 | 0.60±0.15 | ±5% | CGA4C4C0G2W101J060AA | | | CGA4C2C0G2A101J060AA |
| | 3216 | 0.60±0.15 | ±5% | CGA5C4C0G2J101J060AA | | | |
| 120pF | 1005 | 0.50±0.05 | ±5% | | | | CGA2B2C0G2A121J050BA |
| | 1608 | 0.80±0.10 | ±5% | | | CGA3E3C0G2E121J080AA | CGA3E2C0G2A121J080AA |
| | 2012 | 0.60±0.15 | ±5% | CGA4C4C0G2W121J060AA | | | |
| | 3216 | 0.60±0.15 | ±5% | CGA5C4C0G2J121J060AA | | | |
| 150pF | 1005 | 0.50±0.05 | ±5% | | | | CGA2B2C0G2A151J050BA |
| | 1608 | 0.80±0.10 | ±5% | | | CGA3E3C0G2E151J080AA | CGA3E2C0G2A151J080AA |
| | 2012 | 0.60±0.15 | ±5% | CGA4C4C0G2W151J060AA | | | |
| | 3216 | 0.60±0.15 | ±5% | CGA5C4C0G2J151J060AA | | | |
| 180pF | 1005 | 0.50±0.05 | ±5% | | | | CGA2B2C0G2A181J050BA |
| | 1608 | 0.80±0.10 | ±5% | | | CGA3E3C0G2E181J080AA | CGA3E2C0G2A181J080AA |
| | 2012 | 0.60±0.15 | ±5% | CGA4C4C0G2W181J060AA | | | |
| | 3216 | 0.60±0.15 | ±5% | CGA5C4C0G2J181J060AA | | | |
| 220pF | 1005 | 0.50±0.05 | ±5% | | | | CGA2B2C0G2A221J050BA |
| | 1608 | 0.80±0.10 | ±5% | | | CGA3E3C0G2E221J080AA | CGA3E2C0G2A221J080AA |
| | 2012 | 0.60±0.15 | ±5% | CGA4C4C0G2W221J060AA | | | CGA4C2C0G2A221J060AA |
| | 3216 | 0.60±0.15 | ±5% | CGA5C4C0G2J221J060AA | | | |
| 270pF | 1005 | 0.50±0.05 | ±5% | | | | CGA2B2C0G2A271J050BA |
| | 1608 | 0.80±0.10 | ±5% | | | CGA3E3C0G2E271J080AA | CGA3E2C0G2A271J080AA |
| | 2012 | 0.60±0.15 | ±5% | CGA4C4C0G2W271J060AA | | | |
| | 3216 | 0.60±0.15 | ±5% | CGA5C4C0G2J271J060AA | | | |
| 330pF | 1005 | 0.50±0.05 | ±5% | | | | CGA2B2C0G2A331J050BA |
| | 1608 | 0.80±0.10 | ±5% | | | CGA3E3C0G2E331J080AA | CGA3E2C0G2A331J080AA |
| | 2012 | 0.60±0.15 | ±5% | CGA4C4C0G2W331J060AA | | | |
| | 3216 | 0.60±0.15 | ±5% | CGA5C4C0G2J331J060AA | | | |
| 390pF | 1005 | 0.50±0.05 | ±5% | | | | CGA2B2C0G2A391J050BA |
| | 1608 | 0.80±0.10 | ±5% | | | CGA3E3C0G2E391J080AA | CGA3E2C0G2A391J080AA |
| | 2012 | 0.60±0.15 | ±5% | CGA4C4C0G2W391J060AA | | | |
| | 3216 | 0.60±0.15 | ±5% | CGA5C4C0G2J391J060AA | | | |
| 470pF | 1005 | 0.50±0.10 | ±5% | | | | CGA2B2C0G2A471J050BA |
| | 1608 | 0.80±0.10 | ±5% | | | CGA3E3C0G2E471J080AA | CGA3E2C0G2A471J080AA |
| | 2012 | 0.60±0.15 | ±5% | CGA4C4C0G2W471J060AA | | | CGA4C2C0G2A471J060AA |
| | 3216 | 0.85±0.15 | ±5% | CGA5F4C0G2J471J085AA | | | |
| 560pF | 1005 | 0.50±0.05 | ±5% | | | | CGA2B1C0G2A561J050BC |
| | 1608 | 0.80±0.10 | ±5% | | | CGA3E3C0G2E561J080AA | CGA3E2C0G2A561J080AA |
| | 2012 | 0.60±0.15 | ±5% | CGA4C4C0G2W561J060AA | | | |
| | 3216 | 0.85±0.15 | ±5% | CGA5F4C0G2J561J085AA | | | |

■灰色涂层的品名, 为新设计非推荐品。

⚠ 为了能够更加正确、安全地使用产品, 请务必索取能进一步确认详细特性、规格的采购规格书。
 记载内容可能因为产品改良等原因不经预告而更改, 恕不另行通知。

MULTILAYER CERAMIC CHIP CAPACITORS



电容范围表

温度特性:COG (-55 to +125°C、0±30ppm/°C)

| 电容 | 尺寸 | 厚度 (mm) | 电容容差 | 目录型号 | | | |
|-------|------|------------|------|----------------------|----------------------|----------------------|----------------------|
| | | | | 额定电压 Edc: 630V | 额定电压 Edc: 450V | 额定电压 Edc: 250V | 额定电压 Edc: 100V |
| 680pF | 1005 | 0.50±0.05 | ±5% | | | | CGA2B1C0G2A681J050BC |
| | 1608 | 0.80±0.10 | ±5% | | | CGA3E3C0G2E681J080AA | CGA3E2C0G2A681J080AA |
| | 2012 | 0.60±0.15 | ±5% | | CGA4C4C0G2W681J060AA | | |
| | 3216 | 0.85±0.15 | ±5% | CGA5F4C0G2J681J085AA | | | |
| 820pF | 1005 | 0.50±0.05 | ±5% | | | | CGA2B1C0G2A821J050BC |
| | 1608 | 0.80±0.10 | ±5% | | | CGA3E3C0G2E821J080AA | CGA3E2C0G2A821J080AA |
| | 2012 | 0.60±0.15 | ±5% | | CGA4C4C0G2W821J060AA | CGA4C3C0G2E821J060AA | |
| | 3216 | 0.85±0.15 | ±5% | CGA5F4C0G2J821J085AA | | | |
| 1nF | 1005 | 0.50±0.05 | ±5% | | | | CGA2B1C0G2A102J050BC |
| | 1608 | 0.80±0.10 | ±5% | | | CGA3E3C0G2E102J080AA | CGA3E2C0G2A102J080AA |
| | 2012 | 0.60±0.15 | ±5% | | CGA4C4C0G2W102J060AA | | CGA4C2C0G2A102J060AA |
| | 3216 | 0.85±0.15 | ±5% | CGA5F4C0G2J102J085AA | | CGA4F3C0G2E102J085AA | |
| 1.2nF | 1608 | 0.80±0.10 | ±5% | | | CGA3E3C0G2E122J080AA | CGA3E2C0G2A122J080AA |
| | 2012 | 0.60±0.15 | ±5% | | CGA4C4C0G2W122J060AA | | CGA4C2C0G2A122J060AA |
| | 3216 | 0.85±0.15 | ±5% | CGA5F4C0G2J122J085AA | | CGA4F3C0G2E122J085AA | |
| | 1608 | 0.80±0.10 | ±5% | | | CGA3E3C0G2E152J080AA | CGA3E2C0G2A152J080AA |
| 1.5nF | 2012 | 0.60±0.15 | ±5% | | CGA4F4C0G2W152J085AA | CGA4F3C0G2E152J085AA | CGA4C2C0G2A152J060AA |
| | 3216 | 1.15±0.15 | ±5% | CGA5H4C0G2J152J115AA | | | |
| | 1608 | 0.80±0.10 | ±5% | | | CGA3E3C0G2E182J080AA | CGA3E2C0G2A182J080AA |
| | 2012 | 0.85±0.15 | ±5% | | CGA4F4C0G2W182J085AA | | CGA4F2C0G2A182J085AA |
| 1.8nF | 3216 | 1.15±0.15 | ±5% | CGA5H4C0G2J182J115AA | | CGA4J3C0G2E182J125AA | |
| | 1608 | 0.80±0.10 | ±5% | | | | CGA3E2C0G2A222J080AA |
| | 2012 | 0.85±0.15 | ±5% | | CGA4F4C0G2W222J085AA | CGA3E3C0G2E222J080AA | CGA4F2C0G2A222J085AA |
| | 3216 | 1.15±0.15 | ±5% | CGA5H4C0G2J222J115AA | | CGA4J3C0G2E222J125AA | |
| 2.2nF | 1608 | 0.80±0.10 | ±5% | | | | CGA3E2C0G2A272J080AA |
| | 2012 | 0.85±0.15 | ±5% | | CGA4F4C0G2W272J085AA | CGA3E3C0G2E272J080AA | CGA4J2C0G2A272J125AA |
| | 3216 | 1.15±0.15 | ±5% | CGA5H4C0G2J272J115AA | | CGA4J3C0G2E272J125AA | |
| | 1608 | 0.80±0.20 | ±5% | | | | CGA3E2C0G2A332J080AA |
| 3.3nF | 2012 | 0.85±0.15 | ±5% | | CGA4J4C0G2W332J125AA | CGA4F3C0G2E332J085AA | CGA4J2C0G2A332J125AA |
| | 3216 | 1.60±0.20 | ±5% | CGA5L4C0G2J332J160AA | | CGA5F3C0G2E332J085AA | |
| | 1608 | 0.80±0.10 | ±5% | | | | CGA3E1C0G2A392J080AC |
| | 2012 | 1.25±0.20 | ±5% | | CGA4J4C0G2W392J125AA | CGA4J3C0G2E392J125AA | CGA4J2C0G2A392J125AA |
| 3.9nF | 3216 | 0.85±0.15 | ±5% | CGA5F4C0G2J392J085AA | | | CGA5C2C0G2A392J060AA |
| | 3216 | 1.15±0.15 | ±5% | | | CGA5H3C0G2E392J115AA | |
| | 3225 | 1.25±0.20 | ±5% | CGA6J4C0G2J392J125AA | | | |
| | 1608 | 0.80±0.10 | ±5% | | | | CGA3E1C0G2A472J080AC |
| 4.7nF | 2012 | 1.25±0.20 | ±5% | | CGA4J4C0G2W472J125AA | CGA4J3C0G2E472J125AA | CGA4J2C0G2A472J125AA |
| | 3216 | 0.85±0.15 | ±5% | CGA5F4C0G2J472J085AA | | CGA5H3C0G2E472J115AA | CGA5F2C0G2A472J085AA |
| | 3216 | 1.15±0.15 | ±5% | | | | |
| | 3225 | 1.60±0.20 | ±5% | CGA6L4C0G2J472J160AA | | | |
| 5.6nF | 1608 | 0.80±0.10 | ±5% | | | | CGA3E1C0G2A562J080AC |
| | 2012 | 1.25±0.20 | ±5% | | CGA4J4C0G2W562J125AA | CGA4J3C0G2E562J125AA | CGA4J2C0G2A562J125AA |
| | 3216 | 0.85±0.15 | ±5% | | | | CGA5F2C0G2A562J085AA |
| | 3216 | 1.15±0.15 | ±5% | CGA5H4C0G2J562J115AA | | CGA5H3C0G2E562J115AA | |
| 6.8nF | 3225 | 1.60±0.20 | ±5% | CGA6L4C0G2J562J160AA | | | |
| | 1608 | 0.80±0.10 | ±5% | | | | CGA3E1C0G2A682J080AC |
| | 2012 | 1.25±0.20 | ±5% | | CGA4J4C0G2W682J125AA | CGA4J3C0G2E682J125AA | CGA4J2C0G2A682J125AA |
| | 3216 | 1.15±0.15 | ±5% | CGA5H4C0G2J682J115AA | CGA5H4C0G2W682J115AA | | CGA5H2C0G2A682J115AA |
| 8.2nF | 3216 | 1.60±0.20 | ±5% | CGA6M4C0G2J682J200AA | | CGA5L3C0G2E682J160AA | |
| | 1608 | 0.80±0.10 | ±5% | | | | CGA3E1C0G2A822J080AC |
| | 2012 | 1.25±0.20 | ±5% | | CGA4J4C0G2W822J125AA | CGA4J3C0G2E822J125AA | CGA4J2C0G2A822J125AA |
| | 3216 | 1.15±0.15 | ±5% | | CGA5H4C0G2W822J115AA | | CGA5H2C0G2A822J115AA |
| 8.2nF | 3216 | 1.60±0.20 | ±5% | CGA5L4C0G2J822J160AA | | CGA5L3C0G2E822J160AA | |
| | 3225 | 1.25±0.20 | ±5% | CGA6J4C0G2J822J125AA | | | |
| | 4532 | 1.60±0.20 | ±5% | CGA8L4C0G2J822J160KA | | | |

■灰色涂层的品名, 为新规设计非推荐品。

⚠ 为了能够更加正确、安全地使用产品, 请务必索取能进一步确认详细特性、规格的采购规格书。
记载内容可能因为产品改良等原因不经预告而更改, 恕不另行通知。

MULTILAYER CERAMIC CHIP CAPACITORS



电容范围表

温度特性: C0G (-55 to +125°C、0±30ppm/°C)

| 电容 | 尺寸 | 厚度 (mm) | 电容容差 | 目录型号 | | | |
|-----------|-----------|-----------------|----------------------|----------------------|----------------------|----------------------|----------------------|
| | | | | 额定电压 Edc: 630V | 额定电压 Edc: 450V | 额定电压 Edc: 250V | 额定电压 Edc: 100V |
| 10nF | 1608 | 0.80±0.10 | ±5% | | | | CGA3E1C0G2A103J080AC |
| | 2012 | 1.25±0.20 | ±5% | | | CGA4J3C0G2E103J125AA | CGA4J2C0G2A103J125AA |
| | 3216 | 1.15±0.15 | ±5% | | | CGA5H3C0G2E103J115AA | CGA5H2C0G2A103J115AA |
| | | 1.60±0.20 | ±5% | CGA5L4C0G2J103J160AA | CGA5L4C0G2W103J160AA | | |
| | 3225 | 1.25±0.20 | ±5% | CGA6J4C0G2J103J125AA | | | |
| | | 1.60±0.20 | ±5% | | | CGA6L3C0G2E103J160AA | |
| 4532 | 1.60±0.20 | ±5% | CGA8L4C0G2J103J160KA | | | | |
| 15nF | 2012 | 0.85±0.15 | ±5% | | | | CGA4F1C0G2A153J085AC |
| | 3216 | 1.15±0.15 | ±5% | | | | CGA5H2C0G2A153J115AA |
| | | 1.60±0.30,-0.10 | ±5% | | CGA5L4C0G2W153J160AA | | |
| | 3225 | 1.60±0.20 | ±5% | | | CGA5L3C0G2E153J160AA | |
| | | 1.25±0.20 | ±5% | | | | CGA6J2C0G2A153J125AA |
| | 4532 | 1.60±0.20 | ±5% | CGA6L4C0G2J153J160AA | | CGA6M3C0G2E153J200AA | |
| 2.00±0.20 | | ±5% | | | | | |
| 4532 | 2.50±0.30 | ±5% | CGA8P4C0G2J153J250KA | | | | |
| 22nF | 2012 | 1.25±0.20 | ±5% | | | | CGA4J1C0G2A223J125AC |
| | 3216 | 1.60±0.30,-0.10 | ±5% | | | CGA5L3C0G2E223J160AA | |
| | | 1.60±0.20 | ±5% | | | | CGA5L2C0G2A223J160AA |
| | 3225 | 1.60±0.20 | ±5% | | | CGA6L3C0G2E223J160AA | CGA6L2C0G2A223J160AA |
| | | 2.30±0.20 | ±5% | CGA6N4C0G2J223J230AA | CGA6N4C0G2W223J230AA | | |
| | 4532 | 1.60±0.20 | ±5% | | | CGA8L3C0G2E223J160KA | |
| 3.20±0.30 | | ±5% | CGA8R4C0G2J223J320KA | | | | |
| 33nF | 2012 | 1.25±0.20 | ±5% | | | | CGA4J1C0G2A333J125AC |
| | 3216 | 1.60±0.30,-0.10 | ±5% | | | | CGA5L2C0G2A333J160AA |
| | | 2.00±0.20 | ±5% | | | | CGA6M2C0G2A333J200AA |
| | 3225 | 2.30±0.20 | ±5% | | | CGA6N3C0G2E333J230AA | |
| | | 2.50±0.30 | ±5% | CGA6P4C0G2J333J250AA | CGA6P4C0G2W333J250AA | | |
| | 4532 | 2.00±0.20 | ±5% | CGA8M4C0G2J333J200KA | | CGA8M3C0G2E333J200KA | |
| 47nF | 3216 | 1.15±0.15 | ±5% | | | | CGA5H1C0G2A473J115AC |
| | 3225 | 2.30±0.20 | ±5% | | | | CGA6N2C0G2A473J230AA |
| | | 2.50±0.30 | ±5% | | | CGA6P3C0G2E473J250AA | |
| | 4532 | 2.00±0.20 | ±5% | | | | CGA8M2C0G2A473J200KA |
| | | 2.30±0.20 | ±5% | | CGA8N4C0G2W473J230KA | | |
| | | 3.20±0.30 | ±5% | CGA8R4C0G2J473J320KA | | CGA8R3C0G2E473J320KA | |
| 68nF | 3216 | 1.60±0.20 | ±5% | | | | CGA5L1C0G2A683J160AC |
| | 3225 | 2.30±0.20 | ±5% | | | | CGA6N2C0G2A683J230AA |
| | | 2.30±0.20 | ±5% | | | CGA8N4C0G2E683J230KN | |
| | 4532 | 2.50±0.30 | ±5% | | | | CGA8P2C0G2A683J250KA |
| | | 3.20±0.30 | ±5% | | CGA8R4C0G2W683J320KA | | |
| | 5750 | 2.30±0.20 | ±5% | CGA9N1C0G2J683J230KC | | | |
| 100nF | 3216 | 1.60±0.20 | ±5% | | | | CGA5L1C0G2A104J160AC |
| | 4532 | 3.20±0.30 | ±5% | | | CGA8R4C0G2E104J320KN | CGA8R2C0G2A104J320KA |
| | | 5750 | 2.80±0.30 | ±5% | CGA9Q1C0G2J104J280KC | CGA9Q4C0G2W104J280KA | |
| 150nF | 5750 | 2.30±0.20 | ±5% | | | CGA9N4C0G2E154J230KN | CGA9N2C0G2A154J230KA |

⚠ 为了能够更加正确、安全地使用产品，请务必索取能进一步确认详细特性、规格的采购规格书。
 记载内容可能因为产品改良等原因不经预告而更改，恕不另行通知。

电容范围表

温度特性: X7R (-55 to +125°C、±15%)

| 电容 | 尺寸 | 厚度 (mm) | 电容容差 | 目录型号 | | |
|-------|------|------------|------|----------------------|----------------------|----------------------|
| | | | | 额定电压 Edc: 630V | 额定电压 Edc: 250V | 额定电压 Edc: 100V |
| 1nF | 1608 | 0.80±0.10 | ±10% | | | CGA3E2X7R2A102K080AA |
| | | | ±20% | | | CGA3E2X7R2A102M080AA |
| | 3216 | 1.15±0.15 | ±10% | CGA5H4X7R2J102K115AA | | |
| | | | ±20% | CGA5H4X7R2J102M115AA | | |
| 1.5nF | 1608 | 0.80±0.10 | ±10% | | | CGA3E2X7R2A152K080AA |
| | | | ±20% | | | CGA3E2X7R2A152M080AA |
| | 3216 | 1.15±0.15 | ±10% | CGA5H4X7R2J152K115AA | | |
| | | | ±20% | CGA5H4X7R2J152M115AA | | |
| 2.2nF | 1608 | 0.80±0.10 | ±10% | | | CGA3E2X7R2A222K080AA |
| | | | ±20% | | | CGA3E2X7R2A222M080AA |
| | 3216 | 1.15±0.15 | ±10% | CGA5H4X7R2J222K115AA | | |
| | | | ±20% | CGA5H4X7R2J222M115AA | | |
| 3.3nF | 1608 | 0.80±0.10 | ±10% | | | CGA3E2X7R2A332K080AA |
| | | | ±20% | | | CGA3E2X7R2A332M080AA |
| | 3216 | 1.15±0.15 | ±10% | CGA5H4X7R2J332K115AA | | |
| | | | ±20% | CGA5H4X7R2J332M115AA | | |
| 4.7nF | 1608 | 0.80±0.10 | ±10% | | | CGA3E2X7R2A472K080AA |
| | | | ±20% | | | CGA3E2X7R2A472M080AA |
| | 3216 | 1.15±0.15 | ±10% | CGA5H4X7R2J472K115AA | | |
| | | | ±20% | CGA5H4X7R2J472M115AA | | |
| 6.8nF | 1608 | 0.80±0.10 | ±10% | | | CGA3E2X7R2A682K080AA |
| | | | ±20% | | | CGA3E2X7R2A682M080AA |
| | 2012 | 1.25±0.20 | ±10% | | CGA4J3X7R2E682K125AA | |
| | | | ±20% | | CGA4J3X7R2E682M125AA | |
| | 3216 | 1.15±0.15 | ±10% | CGA5H4X7R2J682K115AA | | |
| | | | ±20% | CGA5H4X7R2J682M115AA | | |
| 10nF | 1608 | 0.80±0.10 | ±10% | | | CGA3E2X7R2A103K080AA |
| | | | ±20% | | | CGA3E2X7R2A103M080AA |
| | 2012 | 1.25±0.20 | ±10% | | CGA4J3X7R2E103K125AA | |
| | | | ±20% | | CGA4J3X7R2E103M125AA | |
| | 3216 | 1.15±0.15 | ±10% | CGA5H4X7R2J103K115AA | | |
| | | | ±20% | CGA5H4X7R2J103M115AA | | |
| 15nF | 1608 | 0.80±0.10 | ±10% | | | CGA3E2X7R2A153K080AA |
| | | | ±20% | | | CGA3E2X7R2A153M080AA |
| | 2012 | 1.25±0.20 | ±10% | | CGA4J3X7R2E153K125AA | CGA4J2X7R2A153K125AA |
| | | | ±20% | | CGA4J3X7R2E153M125AA | CGA4J2X7R2A153M125AA |
| | 3216 | 1.15±0.15 | ±10% | CGA5H3X7R2E153K115AA | | |
| | | | ±20% | CGA5H3X7R2E153M115AA | | |
| | 1608 | 0.80±0.10 | ±10% | CGA5K4X7R2J153K130AA | | |
| | | | ±20% | CGA5K4X7R2J153M130AA | | |
| 22nF | 1608 | 0.80±0.10 | ±10% | | | CGA3E2X7R2A223K080AA |
| | | | ±20% | | | CGA3E2X7R2A223M080AA |
| | 2012 | 1.25±0.20 | ±10% | | CGA4J3X7R2E223K125AA | CGA4J2X7R2A223K125AA |
| | | | ±20% | | CGA4J3X7R2E223M125AA | CGA4J2X7R2A223M125AA |
| | 3216 | 1.15±0.15 | ±10% | CGA5H3X7R2E223K115AA | | |
| | | | ±20% | CGA5H3X7R2E223M115AA | | |
| | 1608 | 0.80±0.10 | ±10% | CGA5K4X7R2J223K130AA | | |
| | | | ±20% | CGA5K4X7R2J223M130AA | | |
| 33nF | 1608 | 0.80±0.10 | ±10% | | | CGA3E2X7R2A333K125AA |
| | | | ±20% | | | CGA3E2X7R2A333M125AA |
| | 2012 | 1.25±0.20 | ±10% | | | CGA4J2X7R2A333K125AA |
| | | | ±20% | | | CGA4J2X7R2A333M125AA |
| | 3216 | 1.15±0.15 | ±10% | CGA5H2X7R2A333K115AA | | |
| | | | ±20% | CGA5H2X7R2A333M115AA | | |
| | 1608 | 0.80±0.10 | ±10% | CGA5L4X7R2J333K160AA | CGA5L3X7R2E333K160AA | |
| | | | ±20% | CGA5L4X7R2J333M160AA | CGA5L3X7R2E333M160AA | |
| 47nF | 1608 | 0.80±0.10 | ±10% | | | CGA4J2X7R2A473K125AA |
| | | | ±20% | | | CGA4J2X7R2A473M125AA |
| | 2012 | 1.25±0.20 | ±10% | | | CGA5H2X7R2A473K115AA |
| | | | ±20% | | | CGA5H2X7R2A473M115AA |
| | 3216 | 1.15±0.15 | ±10% | | CGA5L3X7R2E473K160AA | |
| | | | ±20% | | CGA5L3X7R2E473M160AA | |
| | 1608 | 0.80±0.10 | ±10% | CGA6M4X7R2J473K200AA | | |
| | | | ±20% | CGA6M4X7R2J473M200AA | | |
| 68nF | 1608 | 0.80±0.10 | ±10% | | CGA5L3X7R2E683K160AA | CGA5L2X7R2A683K160AA |
| | | | ±20% | | CGA5L3X7R2E683M160AA | CGA5L2X7R2A683M160AA |
| | 2012 | 1.25±0.20 | ±10% | CGA6M4X7R2J683K200AA | | |
| | | | ±20% | CGA6M4X7R2J683M200AA | | |
| | 3216 | 1.15±0.15 | ±10% | CGA6M4X7R2J683K200AA | | |
| | | | ±20% | CGA6M4X7R2J683M200AA | | |
| | 1608 | 0.80±0.10 | ±10% | CGA8L4X7R2J683K160KA | | |
| | | | ±20% | CGA8L4X7R2J683M160KA | | |

■ 灰色涂层的品名, 为新规设计非推荐品。

▲ 为了能够更加正确、安全地使用产品, 请务必索取能进一步确认详细特性、规格的采购规格书。
 记载内容可能因为产品改良等原因不经预告而更改, 恕不另行通知。

电容范围表

温度特性: X7R (-55 to +125°C、±15%)

| 电容 | 尺寸 | 厚度 (mm) | 电容容差 | 目录型号 | | |
|-------|-----------|-----------|----------------------|----------------------|----------------------|----------------------|
| | | | | 额定电压 Edc: 630V | 额定电压 Edc: 250V | 额定电压 Edc: 100V |
| 100nF | 2012 | 1.25±0.20 | ±10% | | | CGA4J2X7R2A104K125AA |
| | | | ±20% | | | CGA4J2X7R2A104M125AA |
| | 3216 | 1.60±0.20 | ±10% | | CGA5L3X7R2E104K160AA | CGA5L2X7R2A104K160AA |
| | | | ±20% | | CGA5L3X7R2E104M160AA | CGA5L2X7R2A104M160AA |
| | 3225 | 2.00±0.20 | ±10% | | CGA6M3X7R2E104K200AA | |
| ±20% | | | | CGA6M3X7R2E104M200AA | | |
| 4532 | 2.30±0.20 | ±10% | CGA8N4X7R2J104K230KA | | | |
| | | ±20% | CGA8N4X7R2J104M230KA | | | |
| 150nF | 3216 | 1.60±0.20 | ±10% | | | CGA5L2X7R2A154K160AA |
| | | | ±20% | | | CGA5L2X7R2A154M160AA |
| | 3225 | 2.00±0.20 | ±10% | | CGA6M3X7R2E154K200AA | |
| | | | ±20% | | CGA6M3X7R2E154M200AA | |
| | 4532 | 1.60±0.20 | ±10% | | CGA8L3X7R2E154K160KA | |
| ±20% | | | | CGA8L3X7R2E154M160KA | | |
| 5750 | 1.60±0.20 | ±10% | CGA9L4X7R2J154K160KA | | | |
| | | ±20% | CGA9L4X7R2J154M160KA | | | |
| 220nF | 3216 | 1.15±0.15 | ±10% | | | CGA5H2X7R2A224K115AA |
| | | | ±20% | | | CGA5H2X7R2A224M115AA |
| | 3225 | 2.00±0.20 | ±10% | | CGA6M3X7R2E224K200AA | |
| | | | ±20% | | CGA6M3X7R2E224M200AA | |
| | 4532 | 2.30±0.20 | ±10% | | CGA8N3X7R2E224K230KA | |
| ±20% | | | | CGA8N3X7R2E224M230KA | | |
| 5750 | 2.30±0.20 | ±10% | CGA9N4X7R2J224K230KA | | | |
| | | ±20% | CGA9N4X7R2J224M230KA | | | |
| 330nF | 3216 | 1.30±0.20 | ±10% | | | CGA5K2X7R2A334K130AA |
| | | | ±20% | | | CGA5K2X7R2A334M130AA |
| | 3225 | 2.00±0.20 | ±10% | | | CGA6M2X7R2A334K200AA |
| | | | ±20% | | | CGA6M2X7R2A334M200AA |
| | 4532 | 2.30±0.20 | ±10% | | CGA8N3X7R2E334K230KA | |
| ±20% | | | | CGA8N3X7R2E334M230KA | | |
| 5750 | 1.60±0.20 | ±10% | | CGA9L3X7R2E334K160KA | | |
| | | ±20% | | CGA9L3X7R2E334M160KA | | |
| 470nF | 3216 | 1.60±0.20 | ±10% | | | CGA5L2X7R2A474K160AA |
| | | | ±20% | | | CGA5L2X7R2A474M160AA |
| | 3225 | 2.00±0.20 | ±10% | | | CGA6M2X7R2A474K200AA |
| | | | ±20% | | | CGA6M2X7R2A474M200AA |
| | 4532 | 2.30±0.20 | ±10% | | CGA8N3X7R2E474K230KA | |
| ±20% | | | | CGA8N3X7R2E474M230KA | | |
| 5750 | 2.30±0.20 | ±10% | | CGA9N3X7R2E474K230KA | | |
| | | ±20% | | CGA9N3X7R2E474M230KA | | |
| 680nF | 3216 | 1.60±0.20 | ±10% | | | CGA5L2X7R2A684K160AA |
| | | | ±20% | | | CGA5L2X7R2A684M160AA |
| | 3225 | 1.60±0.20 | ±10% | | | CGA6L2X7R2A684K160AA |
| | | | ±20% | | | CGA6L2X7R2A684M160AA |
| | 4532 | 2.30±0.20 | ±10% | | | CGA8N2X7R2A684K230KA |
| ±20% | | | | | CGA8N2X7R2A684M230KA | |
| 5750 | 1.60±0.20 | ±10% | | | CGA9L2X7R2A684K160KA | |
| | 2.30±0.20 | ±20% | | | CGA9L2X7R2A684M160KA | |
| | | ±10% | | CGA9N3X7R2E684K230KA | | |
| | | ±20% | | CGA9N3X7R2E684M230KA | | |
| 1µF | 3216 | 1.60±0.20 | ±10% | | | CGA5L2X7R2A105K160AA |
| | | | ±20% | | | CGA5L2X7R2A105M160AA |
| | 3225 | 2.00±0.20 | ±10% | | | CGA6M2X7R2A105K200AA |
| | | | ±20% | | | CGA6M2X7R2A105M200AA |
| | 4532 | 2.30±0.20 | ±10% | | | CGA8N2X7R2A105K230KA |
| ±20% | | | | | CGA8N2X7R2A105M230KA | |
| 5750 | 2.30±0.20 | ±10% | | CGA9N3X7R2E105K230KA | CGA9N2X7R2A105K230KA | |
| | | ±20% | | CGA9N3X7R2E105M230KA | CGA9N2X7R2A105M230KA | |
| 1.5µF | 3225 | 2.00±0.20 | ±10% | | | CGA6M3X7R2A155K200AB |
| | | | ±20% | | | CGA6M3X7R2A155M200AB |
| | 4532 | 2.30±0.20 | ±10% | | | CGA8N2X7R2A155K230KA |
| | | | ±20% | | | CGA8N2X7R2A155M230KA |
| | 5750 | 2.30±0.20 | ±10% | | | CGA9N2X7R2A155K230KA |
| ±20% | | | | | CGA9N2X7R2A155M230KA | |

■ 灰色涂层的品名，为新规设计非推荐品。

⚠ 为了能够更加正确、安全地使用产品，请务必索取能进一步确认详细特性、规格的采购规格书。
记载内容可能因为产品改良等原因不经预告而更改，恕不另行通知。

电容范围表

温度特性: X7R (-55 to +125°C、±15%)

| 电容 | 尺寸 | 厚度 (mm) | 电容容差 | 目录型号 |
|-------|-----------|------------|--------------------------------------|--------------------------------------|
| | | | | 额定电压 E _{dc} : 100V |
| 2.2μF | 3225 | 2.30±0.20 | ±10% | CGA6N3X7R2A225K230AB |
| | | | ±20% | CGA6N3X7R2A225M230AB |
| | 4532 | 2.30±0.20 | ±10% | CGA8N2X7R2A225K230KA |
| | | | ±20% | CGA8N2X7R2A225M230KA |
| 5750 | 2.30±0.20 | ±10% | CGA9N2X7R2A225K230KA | |
| | | ±20% | CGA9N2X7R2A225M230KA | |
| 3.3μF | 5750 | 2.30±0.20 | ±10% | CGA9N2X7R2A335K230KA |
| | | | ±20% | CGA9N2X7R2A335M230KA |
| 4.7μF | 5750 | 2.30±0.20 | ±10% | CGA9N2X7R2A475K230KA |
| | | | ±20% | CGA9N2X7R2A475M230KA |

■灰色涂层的品名，为新规设计非推荐品。

电容范围表

温度特性: X7S (-55 to +125°C、±22%)

| 电容 | 尺寸 | 厚度 (mm) | 电容容差 | 目录型号 |
|-------|------|-----------------|------|-----------------------------|
| | | | | 额定电压 E _{dc} : 100V |
| 1nF | 1005 | 0.50±0.05 | ±10% | CGA2B3X7S2A102K050BB |
| | | | ±20% | CGA2B3X7S2A102M050BB |
| 1.5nF | 1005 | 0.50±0.05 | ±10% | CGA2B3X7S2A152K050BB |
| | | | ±20% | CGA2B3X7S2A152M050BB |
| 2.2nF | 1005 | 0.50±0.05 | ±10% | CGA2B3X7S2A222K050BB |
| | | | ±20% | CGA2B3X7S2A222M050BB |
| 3.3nF | 1005 | 0.50±0.05 | ±10% | CGA2B3X7S2A332K050BB |
| | | | ±20% | CGA2B3X7S2A332M050BB |
| 4.7nF | 1005 | 0.50±0.05 | ±10% | CGA2B3X7S2A472K050BB |
| | | | ±20% | CGA2B3X7S2A472M050BB |
| 6.8nF | 1005 | 0.50±0.05 | ±10% | CGA2B3X7S2A682K050BB |
| | | | ±20% | CGA2B3X7S2A682M050BB |
| 10nF | 1005 | 0.50±0.05 | ±10% | CGA2B3X7S2A103K050BB |
| | | | ±20% | CGA2B3X7S2A103M050BB |
| 33nF | 1608 | 0.80±0.10 | ±10% | CGA3E3X7S2A333K080AB |
| | | | ±20% | CGA3E3X7S2A333M080AB |
| 47nF | 1608 | 0.80±0.10 | ±10% | CGA3E3X7S2A473K080AB |
| | | | ±20% | CGA3E3X7S2A473M080AB |
| 68nF | 1608 | 0.80±0.10 | ±10% | CGA3E3X7S2A683K080AB |
| | | | ±20% | CGA3E3X7S2A683M080AB |
| 100nF | 1608 | 0.80±0.10 | ±10% | CGA3E3X7S2A104K080AB |
| | | | ±20% | CGA3E3X7S2A104M080AB |
| 330nF | 2012 | 1.25±0.20 | ±10% | CGA4J3X7S2A334K125AB |
| | | | ±20% | CGA4J3X7S2A334M125AB |
| 470nF | 2012 | 1.25±0.20 | ±10% | CGA4J3X7S2A474K125AB |
| | | | ±20% | CGA4J3X7S2A474M125AB |
| 680nF | 2012 | 1.25±0.20 | ±10% | CGA4J3X7S2A684K125AB |
| | | | ±20% | CGA4J3X7S2A684M125AB |
| 1μF | 2012 | 1.25±0.20 | ±10% | CGA4J3X7S2A105K125AB |
| | | | ±20% | CGA4J3X7S2A105M125AB |
| 1.5μF | 3216 | 1.60±0.20 | ±10% | CGA5L3X7S2A155K160AB |
| | | | ±20% | CGA5L3X7S2A155M160AB |
| 2.2μF | 3216 | 1.60±0.20 | ±10% | CGA5L3X7S2A225K160AB |
| | | | ±20% | CGA5L3X7S2A225M160AB |
| | | | ±10% | CGA5L3X7S2A335K160AB |
| | | | ±20% | CGA5L3X7S2A335M160AB |
| 3.3μF | 3216 | 1.60+0.30,-0.10 | ±10% | CGA6M3X7S2A335K200AB |
| | | | ±20% | CGA6M3X7S2A335M200AB |
| | 3225 | 2.00±0.20 | ±10% | CGA6M3X7S2A335K200KB |
| | | | ±20% | CGA6M3X7S2A335M200KB |
| 4.7μF | 3225 | 2.00±0.20 | ±10% | CGA6M3X7S2A475K200AB |
| | | | ±20% | CGA6M3X7S2A475M200AB |
| | 4532 | 2.30±0.20 | ±10% | CGA8N3X7S2A475K230KB |
| | | | ±20% | CGA8N3X7S2A475M230KB |
| 6.8μF | 5750 | 2.00±0.20 | ±10% | CGA9M3X7S2A685K200KB |
| | | | ±20% | CGA9M3X7S2A685M200KB |
| 10μF | 5750 | 2.30±0.20 | ±10% | CGA9N3X7S2A106K230KB |
| | | | ±20% | CGA9N3X7S2A106M230KB |
| 15μF | 5750 | 2.50±0.30 | ±20% | CGA9P3X7S2A156M250KB |

■灰色涂层的品名，为新规设计非推荐品。

电容范围表

温度特性: X7T (-55 to +125°C、+22, -33%)

| 电容 | 尺寸 | 厚度 (mm) | 电容容差 | 目录型号 | | |
|-------|------|------------|------|----------------------|----------------------|----------------------|
| | | | | 额定电压 Edc: 630V | 额定电压 Edc: 450V | 额定电压 Edc: 250V |
| 22nF | 2012 | 1.25±0.20 | ±10% | | CGA4J4X7T2W223K125AA | |
| | | | ±20% | | CGA4J4X7T2W223M125AA | |
| | 3216 | 1.15±0.15 | ±10% | CGA5H1X7T2J223K115AC | | |
| | | | ±20% | CGA5H1X7T2J223M115AC | | |
| 33nF | 2012 | 1.25±0.20 | ±10% | | CGA4J4X7T2W333K125AA | CGA4J3X7T2E333K125AA |
| | | | ±20% | | CGA4J4X7T2W333M125AA | CGA4J3X7T2E333M125AA |
| | 3216 | 1.15±0.15 | ±10% | CGA5H1X7T2J333K115AC | | |
| | | | ±20% | CGA5H1X7T2J333M115AC | | |
| 47nF | 2012 | 1.25±0.20 | ±10% | | CGA4J4X7T2W473K125AA | CGA4J3X7T2E473K125AA |
| | | | ±20% | | CGA4J4X7T2W473M125AA | CGA4J3X7T2E473M125AA |
| | 3216 | 1.60±0.20 | ±10% | CGA5L1X7T2J473K160AC | | |
| | | | ±20% | CGA5L1X7T2J473M160AC | | |
| 68nF | 2012 | 1.25±0.20 | ±10% | | | CGA4J3X7T2E683K125AA |
| | | | ±20% | | | CGA4J3X7T2E683M125AA |
| | 3216 | 1.30±0.20 | ±10% | | CGA5K4X7T2W683K130AA | |
| | | | ±20% | | CGA5K4X7T2W683M130AA | |
| 100nF | 2012 | 1.25±0.20 | ±10% | | | CGA4J3X7T2E104K125AA |
| | | | ±20% | | | CGA4J3X7T2E104M125AA |
| | 3216 | 1.60±0.20 | ±10% | | CGA5L4X7T2W104K160AA | |
| | | | ±20% | | CGA5L4X7T2W104M160AA | |
| | 3225 | 1.60±0.20 | ±10% | CGA6L1X7T2J104K160AC | | |
| | | | ±20% | CGA6L1X7T2J104M160AC | | |
| 150nF | 3216 | 1.30±0.20 | ±10% | | | CGA5K3X7T2E154K130AA |
| | | | ±20% | | | CGA5K3X7T2E154M130AA |
| | 3225 | 2.00±0.20 | ±10% | CGA6M1X7T2J154K200AC | | |
| | | | ±20% | CGA6M1X7T2J154M200AC | | |
| | 4532 | 1.60±0.20 | ±10% | CGA8L1X7T2J154K160KC | | |
| | | | ±20% | CGA8L1X7T2J154M160KC | | |
| 220nF | 3216 | 1.60±0.20 | ±10% | | | CGA5L3X7T2E224K160AA |
| | | | ±20% | | | CGA5L3X7T2E224M160AA |
| | 3225 | 2.00±0.20 | ±10% | | CGA6M4X7T2W224K200AA | |
| | | | ±20% | | CGA6M4X7T2W224M200AA | |
| | 4532 | 2.00±0.20 | ±10% | CGA8M1X7T2J224K200KC | | |
| | | | ±20% | CGA8M1X7T2J224M200KC | | |
| 330nF | 3225 | 2.00±0.20 | ±10% | | | CGA6M3X7T2E334K200AA |
| | | | ±20% | | | CGA6M3X7T2E334M200AA |
| | 4532 | 1.60±0.20 | ±10% | | CGA8L4X7T2W334K160KA | |
| | | | ±20% | | CGA8L4X7T2W334M160KA | |
| | 5750 | 2.00±0.20 | ±10% | CGA9M1X7T2J334K200KC | | |
| | | | ±20% | CGA9M1X7T2J334M200KC | | |
| 470nF | 4532 | 2.30±0.20 | ±10% | | CGA8N4X7T2W474K230KA | |
| | | | ±20% | | CGA8N4X7T2W474M230KA | |
| | 5750 | 2.50±0.30 | ±10% | CGA9P1X7T2J474K250KC | | |
| | | | ±20% | CGA9P1X7T2J474M250KC | | |
| 680nF | 4532 | 1.60±0.20 | ±10% | | | CGA8L3X7T2E684K160KA |
| | | | ±20% | | | CGA8L3X7T2E684M160KA |
| | 5750 | 2.00±0.20 | ±10% | | CGA9M4X7T2W684K200KA | |
| | | | ±20% | | CGA9M4X7T2W684M200KA | |
| 1μF | 4532 | 2.50±0.30 | ±10% | | | CGA8P3X7T2E105K250KA |
| | | | ±20% | | | CGA8P3X7T2E105M250KA |
| | 5750 | 2.50±0.30 | ±10% | | CGA9P4X7T2W105K250KA | |
| | | | ±20% | | CGA9P4X7T2W105M250KA | |
| 1.5μF | 5750 | 2.00±0.20 | ±10% | | | CGA9M3X7T2E155K200KA |
| | | | ±20% | | | CGA9M3X7T2E155M200KA |
| 2.2μF | 5750 | 2.50±0.30 | ±10% | | | CGA9P3X7T2E225K250KA |
| | | | ±20% | | | CGA9P3X7T2E225M250KA |

■ 灰色涂层的品名，为新设计非推荐品。

X-ON Electronics

Largest Supplier of Electrical and Electronic Components

Click to view similar products for [Multilayer Ceramic Capacitors MLCC - SMD/SMT](#) category:

Click to view products by [TDK](#) manufacturer:

Other Similar products are found below :

[M39014/01-1467](#) [M39014/02-1218V](#) [M39014/02-1225V](#) [M39014/02-1262V](#) [M39014/02-1301](#) [M39014/22-0631](#) [1210J5000102JCT](#)
[1210J2K00102KXT](#) [1210J5000103KXT](#) [1210J5000223KXT](#) [D55342E07B379BR-TR](#) [D55342E07B523DR-T/R](#) [1812J1K00103KXT](#)
[1812J1K00473KXT](#) [1812J2K00680JCT](#) [1812J4K00102MXT](#) [1812J5000102JCT](#) [1812J5000103JCT](#) [1812J5000682JCT](#) [NIN-FB391JTRF](#)
[NIN-FC2R7JTRF](#) [NPIS27H102MTRF](#) [C1206C101J1GAC](#) [C1608C0G1E472JT000N](#) [C2012C0G2A472J](#) [2220J2K00101JCT](#)
[KHC201E225M76N0T00](#) [LRC-LRF1206LF-01R025FTR1K](#) [1812J1K00222JCT](#) [1812J2K00102KXT](#) [1812J2K00222KXT](#)
[1812J2K00472KXT](#) [2-1622820-7-CUT-TAPE](#) [2220J3K00102KXT](#) [2225J2500824KXT](#) [CCR07CG103KM](#) [CGA2B2C0G1H010C](#)
[CGA2B2C0G1H040C](#) [CGA2B2C0G1H050C](#) [CGA2B2C0G1H060D](#) [CGA2B2C0G1H070D](#) [CGA2B2C0G1H151J](#) [CGA2B2C0G1H1R5C](#)
[CGA2B2C0G1H2R2C](#) [CGA2B2C0G1H3R3C](#) [CGA2B2C0G1H680J](#) [CGA2B2C0G1H6R8D](#) [CGA2B2X8R1H221K](#) [CGA2B2X8R1H472K](#)
[CGA3E1X7R1C474K](#)