

# MULTILAYER CERAMIC CHIP CAPACITORS

Commercial grade, Soft termination (Low resistance type)

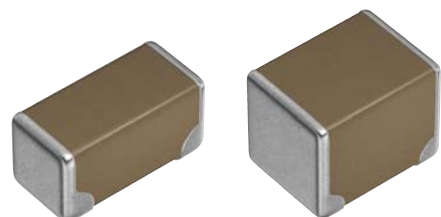
## CNC series

---

CNC5            3216 [1206 inch]

CNC6            3225 [1210 inch]

\* Dimensions code: JIS[EIA]



## REMINDERS FOR USING THESE PRODUCTS

Before using these products, be sure to request the delivery specifications.

### SAFETY REMINDERS

Please pay sufficient attention to the warnings for safe designing when using this products.

#### REMINDERS

1. The products listed on this catalog are intended for use in general electronic equipment (AV equipment, telecommunications equipment, home appliances, amusement equipment, computer equipment, personal equipment, office equipment, measurement equipment, industrial robots) under a normal operation and use condition.

The products are not designed or warranted to meet the requirements of the applications listed below, whose performance and/or quality require a more stringent level of safety or reliability, or whose failure, malfunction or trouble could cause serious damage to society, person or property.

If you intend to use the products in the applications listed below or if you have special requirements exceeding the range or conditions set forth in the each catalog, please contact us.

- |  |  |
|--|--|
| (1) Aerospace/aviation equipment   | (8) Public information-processing equipment                                  |
| (2) Transportation equipment (cars, electric trains, ships, etc.)                    | (9) Military equipment   |
| (3) Medical equipment (excepting Pharmaceutical Affairs Law classification Class1,2) | (10) Electric heating apparatus, burning equipment                           |
| (4) Power-generation control equipment   | (11) Disaster prevention/crime prevention equipment                          |
| (5) Atomic energy-related equipment  | (12) Safety equipment  |
| (6) Seabed equipment   | (13) Other applications that are not considered general-purpose applications |
| (7) Transportation control equipment   |  |

When designing your equipment even for general-purpose applications, you are kindly requested to take into consideration securing protection circuit/device or providing backup circuits in your equipment.

- We may modify products or discontinue production of a product listed in this catalog without prior notification.
- We provide "Delivery Specification" that explain precautions for the specifications and safety of each product listed in this catalog. We strongly recommend that you exchange these delivery specifications with customers that use one of these products.
- If you plan to export a product listed in this catalog, keep in mind that it may be a restricted item according to the "Foreign Exchange and Foreign Trade Control Law". In such cases, it is necessary to acquire export permission in harmony with this law.
- Any reproduction or transferring of the contents of this catalog is prohibited without prior permission from our company.
- We are not responsible for problems that occur related to the intellectual property rights or other rights of our company or a third party when you use a product listed in this catalog. We do not grant license of these rights.
- This catalog only applies to products purchased through our company or one of our company's official agencies. This catalog does not apply to products that are purchased through other third parties.

Notice: Effective January 2013, TDK will use a new catalog number which adds product thickness and packaging specification detail. This new catalog number should be referenced on all catalog orders going forward, and is not applicable for OEM part number orders.

Please be aware the last five digits of the catalog number will differ from the item description (internal control number) on the product label.

Contact your local TDK Sales representative for more information.

(Example)

Catalog issued date	Catalog number	Item description (on delivery label)
Prior to January 2013	C1608C0G1E103J(080AA)	C1608C0G1E103JT000N
January 2013 and later	C1608C0G1E103J080AA	C1608C0G1E103JT000N

# CNC series

## Soft termination (Low resistance type)



Type: CNC5/3216 [1206 inch], CNC6/3225 [1210 inch]

### SERIES OVERVIEW

CNC series is a product incorporating conductive resin layers into the terminal electrodes. Because the resin layers relieve mechanical stress caused by board flexure, the ceramic body is protected from cracks. In addition, unlike conventional soft termination C series whose whole terminal electrodes are covered with the resin layers, the resin layers are covering only a board mounting side. This structure allows electric current to pass outside the resin layers, and so electrical resistance has been reduced. CNC series is a TDK's original product.

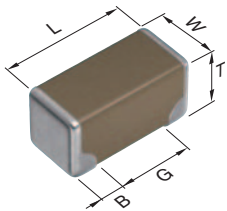
### FEATURES

- Achieves both high reliability and low resistance by the original structure.
- Relieves mechanical stress caused by board flexure.

### APPLICATIONS

- Fail-safe design in battery line.
- Prevention of ceramic body cracks by board bending.

### SHAPE & DIMENSIONS

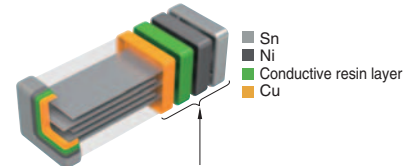


L	Product length
W	Product width
T	Product thickness
B	Terminal width
G	Terminal spacing

### ELECTRODE STRUCTURE DRAWING

Soft termination

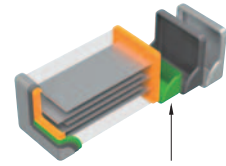
(Conventional type)



The conductive resin layer covers overall surface of copper.

Soft termination

(Low resistance type)



The conductive resin layer covers only board mounting side.

Dimensions in mm

Type	L	W	T	B	G
CNC5	3.20+0.30,-0.20	1.60+0.30,-0.20	1.60+0.30,-0.20	0.30 min.	1.00 min.
CNC6	3.20±0.30	2.50±0.30	2.50±0.30	0.50 min.	—

\*Dimensional tolerances are typical values.

**CATALOG NUMBER CONSTRUCTION**

<b>CNC</b>	<b>5</b>	<b>L</b>	<b>1</b>	<b>X7R</b>	<b>1H</b>	<b>106</b>	<b>K</b>	<b>160</b>	<b>A</b>	<b>E</b>
(1)	(2)	(3)	(4)	(5)	(6)	(7)	(8)	(9)	(10)	(11)

## (1) Series

## (2) Dimensions L x W (mm)

Dimensions code	EIA	Length	Width	Terminal width
5	CC1206	3.20	1.60	0.30
6	CC1210	3.20	2.50	0.50

## (3) Thickness code

Code	Thickness
L	1.60mm
P	2.50mm

## (4) Voltage condition for life test

Symbol	Condition
1	1 x R.V.

## (5) Temperature characteristics

Temperature characteristic	Capacitance change	Temperature range
X7R	±15%	-55 to +125°C
X7S	±22%	-55 to +125°C

## (6) Rated voltage (DC)

Code	Voltage (DC)
2A	100V
1N	75V
1H	50V
1E	25V
1C	16V
1A	10V

## (7) Nominal capacitance (pF)

The capacitance is expressed in three digit codes and in units of pico Farads (pF). The first and second digits identify the first and second significant figures of the capacitance. The third digit identifies the multiplier. R designates a decimal point.

(Example)0R5 = 0.5pF

101 = 100pF

225 = 2,200,000pF = 2.2μF

## (8) Capacitance tolerance

Code	Tolerance
K	±10%
M	±20%

## (9) Thickness

Code	Thickness
160	1.60mm
250	2.50mm

## (10) Packaging style

Code	Style
A	178mm reel, 4mm pitch

## (11) Special reserved code

Code	Description
E	Soft termination

## Capacitance range chart

CNC5/3216 [1206 inch]

Capacitance		X7R				X7S
(pF)	Code	1N (75V)	1H (50V)	1E (25V)	1C (16V)	1A (10V)
2,200,000	225					
4,700,000	475					
10,000,000	106					
22,000,000	226					

Standard thickness 1.60mm

■ For details such as the catalog numbers and product size, please refer to the capacitance range table below.

## Capacitance range chart

CNC6/3225 [1210 inch]

Capacitance		X7R			X7S
(pF)	Code	2A (100V)	1H (50V)	1E (25V)	1A (10V)
4,700,000	475				
10,000,000	106				
22,000,000	226				
47,000,000	476				

Standard thickness 2.50mm

■ For details such as the catalog numbers and product size, please refer to the capacitance range table below.

## Capacitance range table

Temperature characteristic: X7R (-55 to +125°C, ±15%)

Capacitance	Dimensions	Thickness (mm)	Capacitance tolerance	Catalog number				
				Rated voltage Edc: 100V	Rated voltage Edc: 75V	Rated voltage Edc: 50V	Rated voltage Edc: 25V	Rated voltage Edc: 16V
2.2μF	3216	1.60+0.30,-0.20	±10%		<a href="#">CNC5L1X7R1N225K160AE</a>	<a href="#">CNC5L1X7R1H225K160AE</a>		
4.7μF	3216	1.60+0.30,-0.20	±10%			<a href="#">CNC5L1X7R1H475K160AE</a>		
	3225	2.50±0.30	±10%	<a href="#">CNC6P1X7R2A475K250AE</a>		<a href="#">CNC6P1X7R1H475K250AE</a>		
10μF	3216	1.60+0.30,-0.20	±10%			<a href="#">CNC5L1X7R1H106K160AE</a>	<a href="#">CNC5L1X7R1E106K160AE</a>	<a href="#">CNC5L1X7R1C106K160AE</a>
	3225	2.50±0.20	±10%			<a href="#">CNC6P1X7R1H106K250AE</a>		
22μF	3225	2.50±0.30	±20%				<a href="#">CNC6P1X7R1E226M250AE</a>	

Click the part numbers for details

## Capacitance range table

Temperature characteristic: X7S (-55 to +125°C, ±22%)

Capacitance	Dimensions	Thickness (mm)	Capacitance tolerance	Catalog number
				Rated voltage Edc: 10V
22μF	3216	1.60+0.30,-0.20	±20%	<a href="#">CNC5L1X7S1A226M160AE</a>
47μF	3225	2.50±0.30	±20%	<a href="#">CNC6P1X7S1A476M250AE</a>

Click the part numbers for details

## X-ON Electronics

Largest Supplier of Electrical and Electronic Components

*Click to view similar products for [Multilayer Ceramic Capacitors MLCC - SMD/SMT category:](#)*

*Click to view products by [TDK manufacturer:](#)*

Other Similar products are found below :

[M39014/02-1225V](#) [M39014/22-0631](#) [D55342E07B523DR-T/R](#) [NCA1206X7R103K50TRPF](#) [NCA1206X7R104K16TRPF](#) [NIN-FC2R7JTRF](#)  
[NMC0402NPO220J50TRPF](#) [NMC0402X5R105K6.3TRPF](#) [NMC0402X5R224K6.3TRPF](#) [NMC0402X7R103J25TRPF](#)  
[NMC0402X7R153K16TRPF](#) [NMC0402X7R392K50TRPF](#) [NMC0603NPO201J50TRPF](#) [NMC0603X5R475M6.3TRPF](#)  
[NMC0603X7R333K16TRPF](#) [NMC0805NPO820J50TRPF](#) [NMC0805X7R224K16TRPLPF](#) [NMC1206X7R102K50TRPF](#)  
[NMC1206X7R106K10TRPLPF](#) [NMC1206X7R475K10TRPLPF](#) [C1608C0G2A221J](#) [C1608X7R1E334K](#) [C2012C0G2A472J](#)  
[2220J2K00562KXT](#) [CDR33BX104AKUR](#) [CDR33BX683AKUS](#) [CGA3E1X7R1C684K](#) [CL10C0R8BB8ANNC](#) [C1005X5R0G225M](#)  
[C2012X7R2E223K](#) [C3216C0G2J272J](#) [D55342E07B35E7R-T/R](#) [NMC0402NPO150G50TRPF](#) [NMC0402NPO560F50TRPF](#)  
[NMC0402X7R562J25TRPF](#) [NMC0603NPO102J25TRPF](#) [NMC1206X7R332K50TRPF](#) [726632-1](#) [CGA6M3X7R1H225K](#)  
[CGA5L2X7R2A105K](#) [CGA3E2X8R1H223K](#) [CDR33BX823AKUR\M500](#) [CDR35BX474AKUR\M500](#) [CDR35BX104BKUR\M500](#) [69995D](#)  
[NMC0201X5R473K6.3TRPF](#) [NMC0201X7R221K25TRPF](#) [NMC0402X5R105K10TRPF](#) [NMC0402X5R224K10TRPF](#)  
[NMC0603X7R104J25TRPF](#)