

## DK-101xx: DK-10100, DK-10101, DK-10111, DK-10110

*Development Kit for ICP-101xx High Accuracy, Low Power, Barometric Pressure and Temperature Sensor*

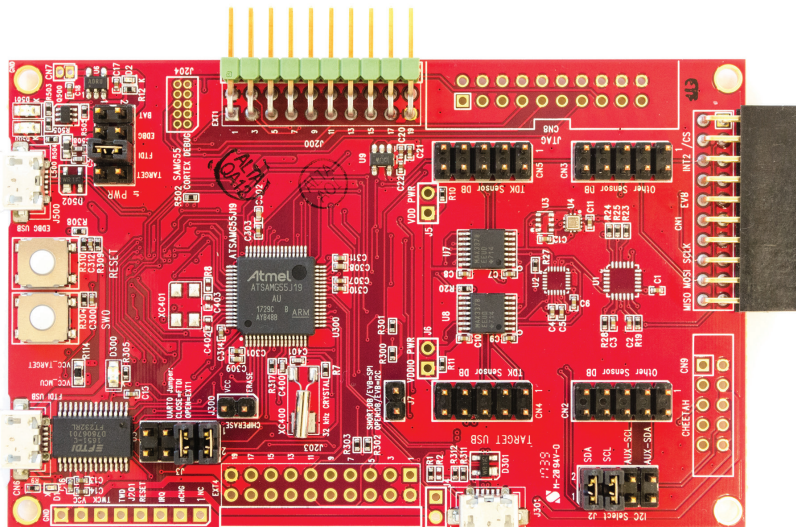
### Overview

The DK-101xx is a comprehensive development platform for ICP-10100, ICP-10101, ICP-10111, and ICP-10110, a High Accuracy, Low Power, Waterproof\* Barometric Pressure and Temperature Sensor IC.

The platform designed around Microchip G55 MCU can be used by developers for rapid evaluation and development of ICP-101xx based solutions. The DK-101xx includes an on-board Embedded Debugger so external tools are not required to program or debug the G55 MCU.

### Key Features

- ICP-101xx Pressure and Temperature Sensor
- Microchip G55 MCU with 512KB Flash
- On-board embedded debugger for programming and debugging
- USB connectors for host interface to
- Support software debug and sensor data logging
- Board power supply through USB



Part Number	Development Kit
ICP-10100	DK-10100
ICP-10101	DK-10101
ICP-10110	DK-10110
ICP-10111	DK-10111

The development kit comes with necessary software including InvenSense MotionLink, a GUI based development tool and embedded Motion Drivers for ICP-101xx.

Embedded Motion Drivers (eMD) consists of a set of APIs to configure various aspects of the platform including ICP-101xx sensor parameters such as Raw Data, and Calibrated Data (Temp in C, Pressure in Pa).

MotionLink is a GUI based development tool included with the platform. It can be used to capture and visualize the sensor data from the motion sensor.

\* DK-10100 and DK-10110 only

## X-ON Electronics

Largest Supplier of Electrical and Electronic Components

*Click to view similar products for [Pressure Sensor Development Tools](#) category:*

*Click to view products by [TDK](#) manufacturer:*

Other Similar products are found below :

[1075](#) [MIKROE-2293](#) [166](#) [EVALSHNBV01TOBO1](#) [MIKROE-2550](#) [SEN-09673](#) [ASD2511-R-P](#) [DPP101G000](#) [DPP901G000](#) [2651](#) [3965](#)  
[4258](#) [4414](#) [4494](#) [4633](#) [4816](#) [NPA-201-EV](#) [EVAL-CN0295-EB1Z](#) [SEN0251](#) [MPRLS0001PG0000SAB](#) [MPRLS0015PA0000SAB](#)  
[MPRLS0025PA00001AB](#) [MPRLS0300YG00001BB](#) [SEK001](#) [DPP101A000](#) [MERITREK](#) [MIKROE-3328](#) [MIKROE-3411](#) [MIKROE-3466](#)  
[MIKROE-3566](#) [MIKROE-3603](#) [MIKROE-4127](#) [MIKROE-4142](#) [MIKROE-4149](#) [MIKROE-4190](#) [MIKROE-4294](#) [MIKROE-1489](#) [MIKROE-](#)  
[1817](#) [MIKROE-1880](#) [MIKROE-2065](#) [MIKROE-2237](#) [MIKROE-3020](#) [MIKROE-3030](#) [MIKROE-3216](#) [MIKROE-3246](#) [30056](#) [101020068](#)  
[101020192](#) [101020553](#) [101020812](#)