

DK-20680A

Development Kit for IAM-20680 6-Axis Motion Sensor for Automotive Applications

Overview

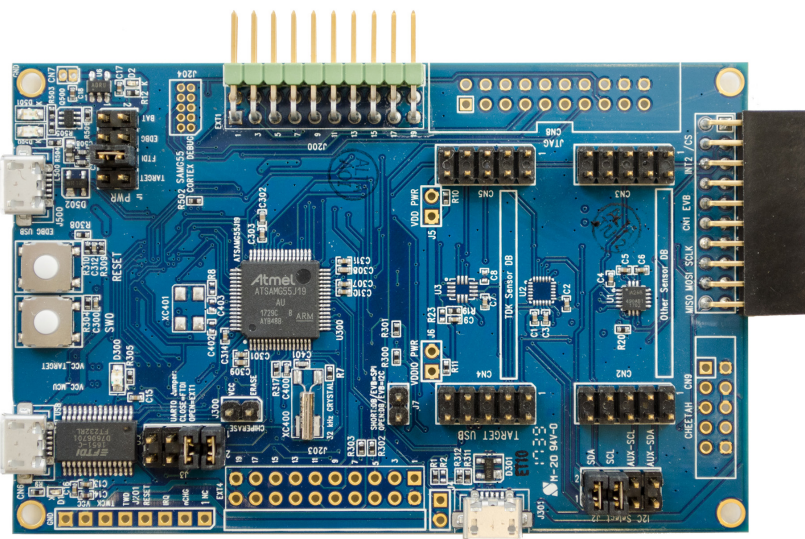
DK-20680A is a comprehensive development platform for IAM-20680, a high performance 6-axis motion sensor that combines a 3-axis gyroscope, and a 3-axis accelerometer.

The platform designed around a Microchip G55 microcontroller unit (MCU) can be used by developers for rapid evaluation and development of IAM-20680-based solutions. The DK-20680A includes an on-board embedded debugger so that external tools are not required to program or debug the G55 MCU.

The development kit comes with all the necessary software including InvenSense MotionLink a GUI based development tool and embedded Motion Drivers for IAM-20680.

Key Features

- IAM-20680 6-axis automotive grade motion sensor
- Microchip G55 MCU with 512KB flash
- On-board embedded debugger for programming and debugging
- USB connectors for host interface to support software debug and sensor data logging
- Board power supply through USB



Embedded Motion Drivers (eMD) consists of a set of application programming interfaces (APIs) to configure various aspects of the platform including IAM-20680 sensor parameters such as full-scale range (FSR), output data rate (ODR), low-power or low-noise mode, Accelerometer, Gyroscope Calibration and sensor interface to host (I2C, SPI).

Motion Link is a graphic user interface (GUI) based development tool included with the platform. It can be used to capture and visualize the sensor data from the motion sensor.

X-ON Electronics

Largest Supplier of Electrical and Electronic Components

Click to view similar products for [Position Sensor Development Tools](#) *category:*

Click to view products by [TDK](#) *manufacturer:*

Other Similar products are found below :

[AS5115 PB](#) [STEVAL-MKI043V1](#) [EVB90340-LDC-200-Rev1.0](#) [STEVAL-STWINMAV1](#) [1032](#) [178](#) [DPP401Z000](#) [EVAL-ADXRS453Z-M](#)
[EVAL-ADXRS453Z-V](#) [1007214-3](#) [STEVAL-MKI045V1](#) [STEVAL-MKI042V1](#) [STEVAL-MKI037V1](#) [IMX-070](#) [164](#) [3595](#) [AS5055A-DK-](#)
[ST](#) [AS5161-EK-AB](#) [AS5200L-MF_EK_AB](#) [AS5215 DB](#) [AS5600L-SO_EK_AB](#) [AS5600L-WL_EK_AB](#) [AS5715-TS_EK_AB](#) [AS5X47D-](#)
[TO_EK_ST](#) [TRK-1T02-E](#) [ADIS16265/PCBZ](#) [ADIS16260/PCBZ](#) [EVAL-ADIS2Z](#) [EVAL-ADXRS453Z](#) [EVAL-ADXRS453Z-S](#) [EVAL-](#)
[ADXRS646Z](#) [EVAL-ADXRS800Z-EY](#) [EVAL-ADXRS800Z-M](#) [EVAL-ADXRS800Z-RG](#) [EVAL-CN0341-SDPZ](#) [ATBNO055-XPRO](#)
[DFR0027](#) [DPP401A000](#) [EVB90365-Rev1.0](#) [EVB90371-GDC-100-Rev1.0](#) [EVB90371-GDC-200-Rev1.0](#) [EVB90371-GDC-300-Rev1.0](#)
[EVB90371-GGO-100-Rev1.0](#) [EVB90371-GGO-200-Rev1.0](#) [EVB90371-GGO-300-Rev1.0](#) [EVB90380 End of Shaft - Rev1.0](#) [AC243007](#)
[DM160217](#) [DM160218](#) [DM160225](#)