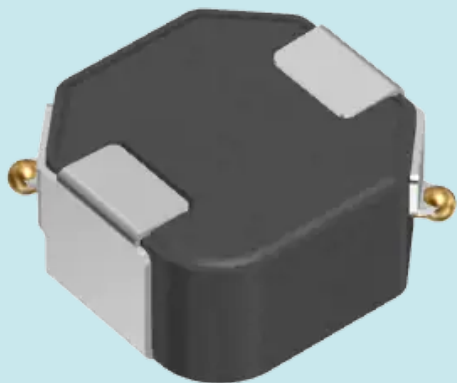


# SPM4020-DZ-KIT

Wound Metal Automotive Power Inductor  
Sample Kit



# SPM4020-DZ type

AEC-Q200

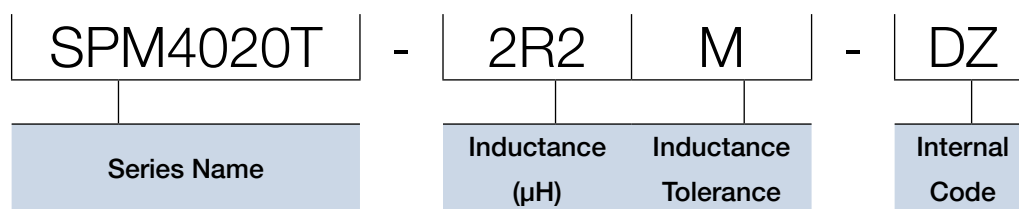
## Features

- Metal composite type wound inductor for power circuits using a metallic magnetic material
- Compared to ferrite wound type inductors, low R<sub>dc</sub> and miniaturization can be realized due to superior DC superimposition characteristics of metallic magnetic materials
- Operating temperature range: -55 to +155°C (including self-temperature rise)
- Compliant with AEC-Q200

## Application

- Automotive-related equipment (ADAS, ECM, BCM)

## Part Number Construction



L ( $\mu$ H)	Tolerance	DC Resistance		Rated Current			Part Number	Kit Quantity
		max (m $\Omega$ )	typ. ( $\Omega$ )	I <sub>sat</sub> (A) typ. ( $\Delta$ L=-20%)	( $\Delta$ L=-30%)	I <sub>temp</sub> (A) typ. ( $\Delta$ T=40degC)		
0.10	±30%	4.95	4.50	24.6	31.8	11.3	SPM4020T-R10N-DZ	5
0.22	±30%	8.36	7.60	18.5	23.8	8.7	SPM4020T-R22N-DZ	5
0.47	±20%	11.6	10.5	12.3	16.7	7.8	SPM4020T-R47M-DZ	5
1.0	±20%	28.2	25.6	7.9	10.9	4.9	SPM4020T-1R0M-DZ	5
1.5	±20%	39.5	35.9	6.1	8.5	4.1	SPM4020T-1R5M-DZ	5
2.2	±20%	66.0	60.0	4.6	6.2	3.1	SPM4020T-2R2M-DZ	5

## X-ON Electronics

Largest Supplier of Electrical and Electronic Components

*Click to view similar products for [Inductor Kits & Accessories](#) category:*

*Click to view products by [TDK](#) manufacturer:*

Other Similar products are found below :

[B82498X001](#) [EKDMGN08A-KIT](#) [CP-P36/22-2S](#) [744062](#) [TSTH-MM](#) [TSTH-MS](#) [TTH 50-150](#) [WE-1413H](#) [WE-1952V](#) [WE-237](#) [WE-2750H](#)  
[WE-279](#) [WE-3671H](#) [WE-3683H](#) [WE-3686](#) [WE-3693](#) [WE-3698H](#) [WE-3701H](#) [WE-3759](#) [E30-K-H-12P-SS-P3002](#) [E65-54-K-H](#) [E65-81-K-H](#)  
[EE13-K-V-10P-SW](#) [EE25\\_10\\_6-K-V-10P-YW-360](#) [EF12.6-K-H-9P-P1212](#) [EF16-K-H-9P-SW](#) [EF20-K-H-8P](#) [EF20-K-H-8P-SW](#) [EFD12\\_3.5-](#)  
[K-1S-8P-CPHS](#) [FIRCHK](#) [744006](#) [7440405](#) [CLI-EFD25](#) [CPH-U15/11/6-1S-4P](#) [TSTH-MD](#) [WE-3657H](#) [WE-3621H](#) [WE-3292V](#) [WE-2752V](#)  
[CCCM453232-LAB1](#) [B66359-B1013-T1](#) [B82442X002](#) [TTH 200-300](#) [74491](#) [P0752NLKIT](#) [P0250NLKIT](#) [P0770NLKIT](#) [823999](#) [WZ-7958](#)  
[WZ 7953/1 ST](#)