

Single Output 200 to 250W Medical & ITE Power Supplies

<https://product.tdk.com/en/power/cus-m>
www.emea.lambda.tdk.com/cus200m



Medical



Industrial



Test



COMM



Broadcast



With efficiencies up to 94%, the medical and ITE certified CUS200M is rated at 200W with convection cooling and up to 250W with airflow. The CUS200M is ideal for applications where audible noise cannot be tolerated, including hospital, dental, broadcast and professional audio equipment. A 5V 0.6A standby output, DC Good signal and remote on/off are provided as standard.

Features

- 200W Convection Cooled
- Up to 250W with Forced Air
- Medical Certifications (2 x MOPP)
- Class B Conducted and Radiated EMI
- 5V Standby Voltage, DC Good Signal and Remote On/Off
- Compact 3 x 5 x 1.5" size
- Enclosure Options

Benefits

- Quiet Operation
- Can Utilize System Airflow
- Suitable for B and BF Rated Equipment
- Easier System EMC Compliance
- Provides Flexibility in the System
- Industry Standard Size For Alternative Power Requirements
- Versatile Application

Model Selector

Model	Nominal Output Voltage (V)	Output Adjustment (V)	Maximum Current Convection (A)	Maximum Current Forced Air (A)	Maximum Power Convection (W)	Maximum Power Forced Air (W)
CUS200M-12	12	11.7 - 12.6	16.7	16.7	200.4	200.4
CUS200M-18	18	17.6 - 18.9	11.2	14	201.6	252.0
CUS200M-24	24	23.5 - 25.2	8.4	10.5	201.6	252.0
CUS200M-36	36	35.2 - 37.8	5.5	7	198.0	252.0
CUS200M-48	48	47 - 50.4	4.2	5.3	201.6	254.4

Options

Suffix	Description
Blank	Open frame
/A	Chassis and cover
/L	L bracket chassis

Specifications

Model		CUS200M
Input		
Input Voltage range	V	85 - 264VAC (1)
Input Frequency	Hz	47 - 63Hz
Input Current (115/230VAC)	A	200W output: 2.2 / 1.1A; 250W output: 3.0 / 1.5A
Inrush Current (typ) (Cold Start)	A	35A at 115VAC, 70A at 230VAC
Leakage Current	uA	<300uA at 265VAC, 60Hz
Power Factor (115/230VAC)	-	0.99 / 0.95
Harmonic Compliance	-	Meets EN61000-3-2 Class A
No Load Power Consumption	W	<0.5W at 230VAC (Remote on/off activated and no load on 5Vsb)
Hold Up Time (typ) at 115 / 230VAC Input	ms	16ms at 200W output, 12ms at 250W
Efficiency at 115 / 230VAC input 200W	%	12V: 92 / 93, 18 to 48V: 92 / 94
Conducted & Radiated EMI	-	EN55011-B, EN55022-B, FCC Class B
Immunity	-	IEC61000-4-2, IEC60601-1-2 Ed4. See immunity table
Insulation Class	-	Construction suitable for Class I installation
Safety Agency Certifications	-	IEC/UL/ES/CSA/EN60601-1, IEC/UL/CSA/EN62368-1, 60950-1, CE Mark

Immunity

Test	Standard	Test Level	Criteria	Notes (the power stated below is total power (main power + Vsb output))
ESD	EN61000-4-2	2 & 3	A	Level 3 air discharge only
Radiated Susceptibility	EN61000-4-3	3	A	
Electrical Fast Transient Burst	EN61000-4-4	3	A	
Surge	EN61000-4-5	3 & 4	A	Level 4 common mode only
Conducted Susceptibility	EN61000-4-6	3	A	-
Magnetic fields	EN61000-4-8	4	A	-
Voltage Dips	EN61000-4-11	Class 3	B	100 - 120VAC 200 - 240VAC
Short Interruptions	EN61000-4-11	Class 3	B	-
Voltage Dips	EN60601-1-2:2015	Class 2	A	100 - 120VAC or >160W 200 - 240VAC and <160W
Short Interruptions	EN60601-1-2:2015	Class 2	B	-
SEMI F47 Line Dip	SEMI F47	-	-	At input voltages > 200VAC

Specifications		
Model		CUS200M
Output		
Line Regulation	%	0.5% of nominal output
Load Regulation	%	1% of nominal output
Ripple & Noise	mV / %	180mV or 1%, which ever is the greater
Temperature Coefficient	%/°C	<0.02%/°C
Minimum Load	-	No minimum load required
Overcurrent Protection	A	12V: >17.2A, 18V: > 14.7A, 24V: > 11A, 36V: > 7.4A, 48V: > 5.5A
Overvoltage Protection (2)	V	12V: 13.2 - 16.2V, 18V: 19.8 - 24.3V, 24V: 26.4 - 32.4V, 36V: 39.6 - 48.6V, 48V: 52.8 - 64.8V
Remote Sense	-	No
Remote On/Off	-	Apply voltage to isolated terminals to shut unit down
Standby Voltage	-	5V 0.6A (convection), 1A (forced air)
Indicators	-	None
Parallel Operation	-	Not possible
Series Operation	-	Possible, see installation manual
Environmental		
Operating Temperature	°C	-20 to +70°C. Derate linearly to 50% load from +50 to +70°C (3)
Storage Temperature	°C	-40° to +85°C
Humidity (non condensing)	%RH	10 - 95%RH (Operating & Storage)
Cooling	-	Convection or Forced Air Cooled (1.5m/s across terminals)
Altitude	m	5,000m operating
Withstand Voltage (For 1 minute)	VAC	Input to Ground 2kVAC (1xMOPP), Input to Output 4kVAC (2xMOPPs), Output to Ground 1.5kVAC (1xMOPP) Suitable for B and BF rated medical equipment
Isolation Resistance	MΩ	>100MΩ at 25°C, 70%RH & 500VDC
Vibration (Non Operating)	-	10 - 55Hz: 19.6m/s ² constant sweep 1 min X, Y, Z for 1 hour
Shock	-	< 196.1 m/s ² , (20G)
Other		
Weight (Typ)	g	Open frame: 350g, L bracket: 420g, Cover: 470g
Size (WxLxH)	mm	50.8 x 76.2 x 34
Size (WxLxH)	Inches	3 x 5 x 1.34
Connectors (JST)	-	Input (CN1): B2P3-VH(LF)(SN) (Mates with VHR-3N housing). Output (CN-51): B4P-VH(LF)(SN) (Mates with VHR-4N)
MTBF - RCR-9102B	Hours	126,383 (Telcordia calculations yield significantly higher numbers. Contact factory)
Warranty	yrs	3 years

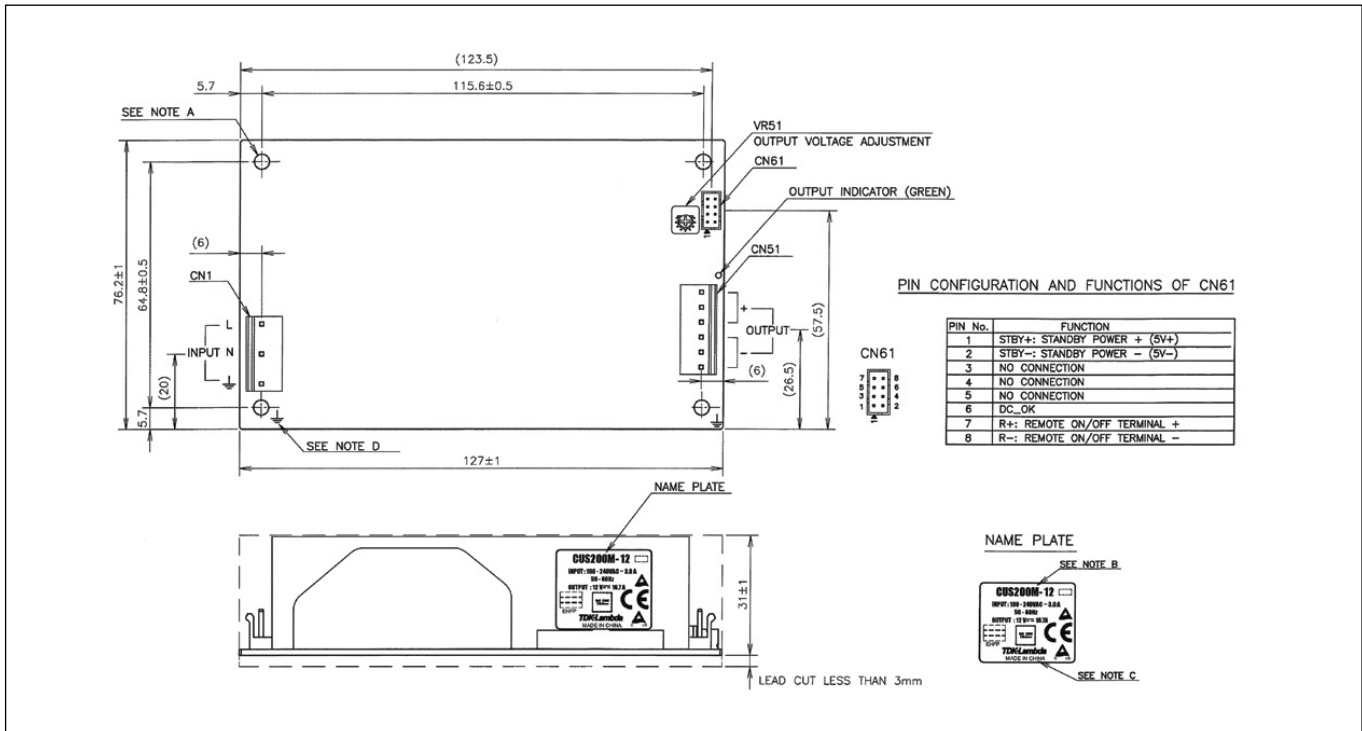
Notes:

See website for detailed specifications, test methods and installation manual

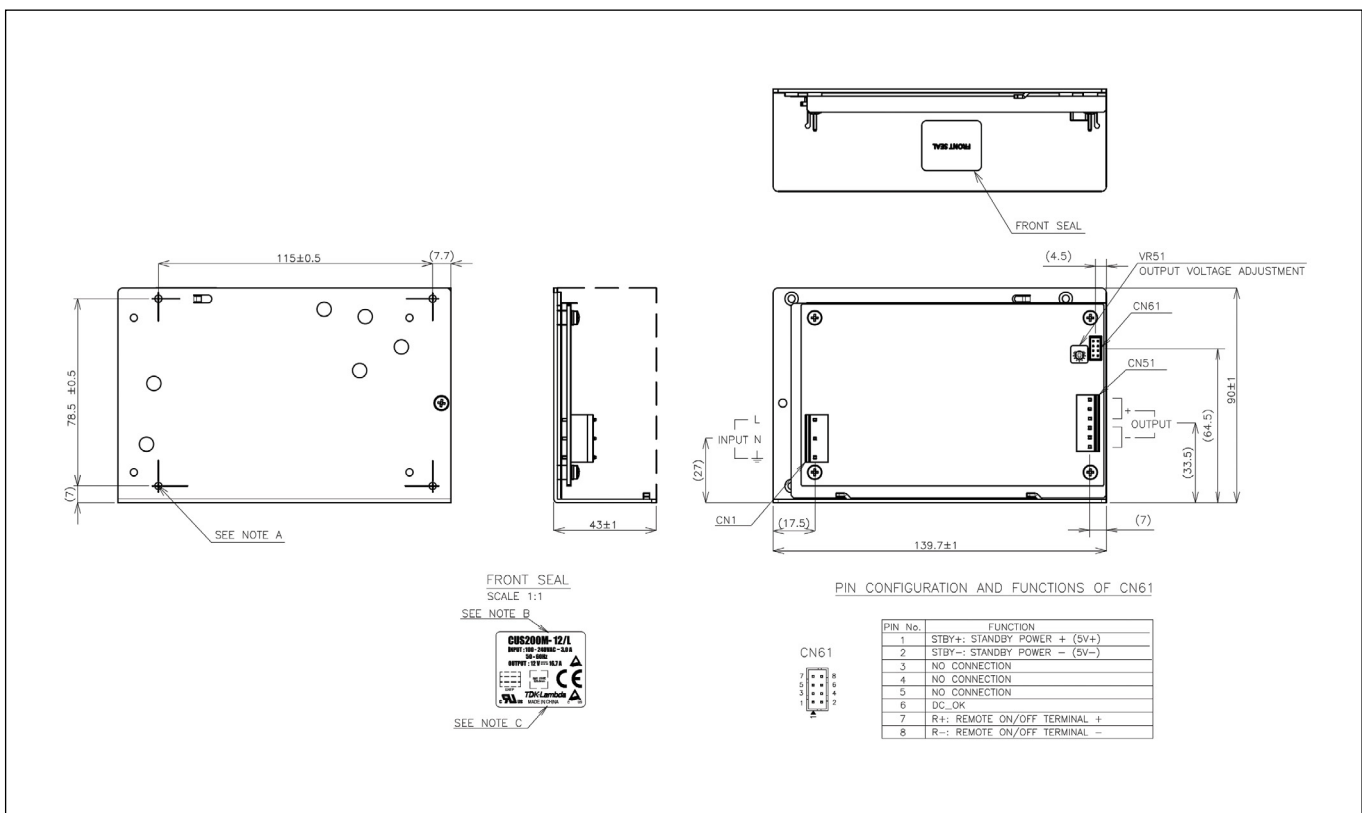
See installation manual for terminal pin and hand tool information

- (1) Derate linearly to 80% load from 115 to 85VAC input. See derating curves below
- (2) Cycle AC input to reset
- (3) Models with cover (/A option) have additional derating. See derating curves below

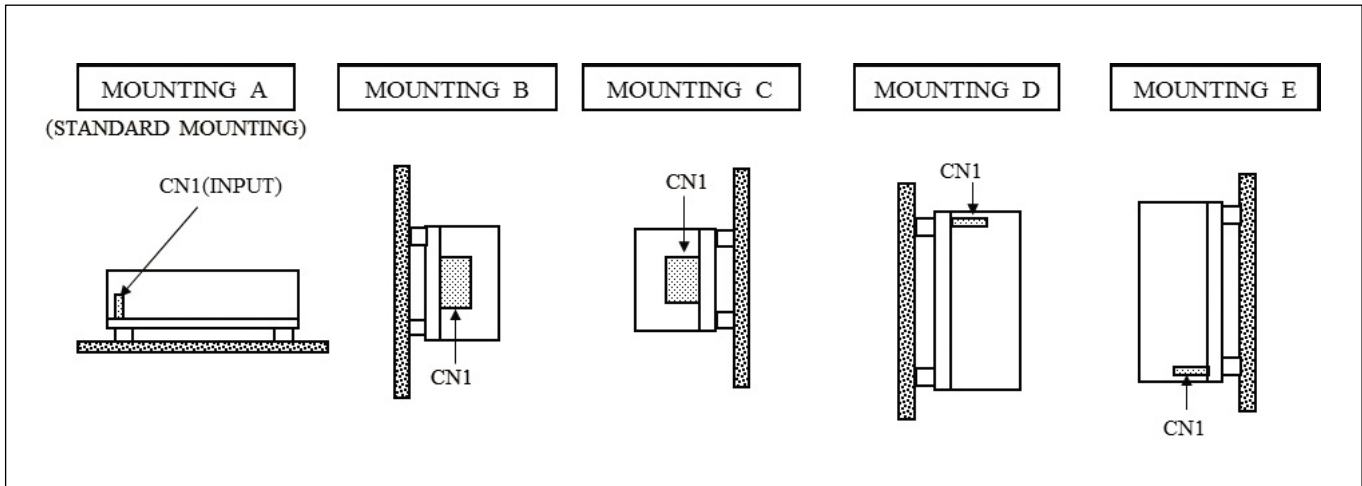
Outline Drawing CUS200M Series



Outline Drawing CUS200M /L

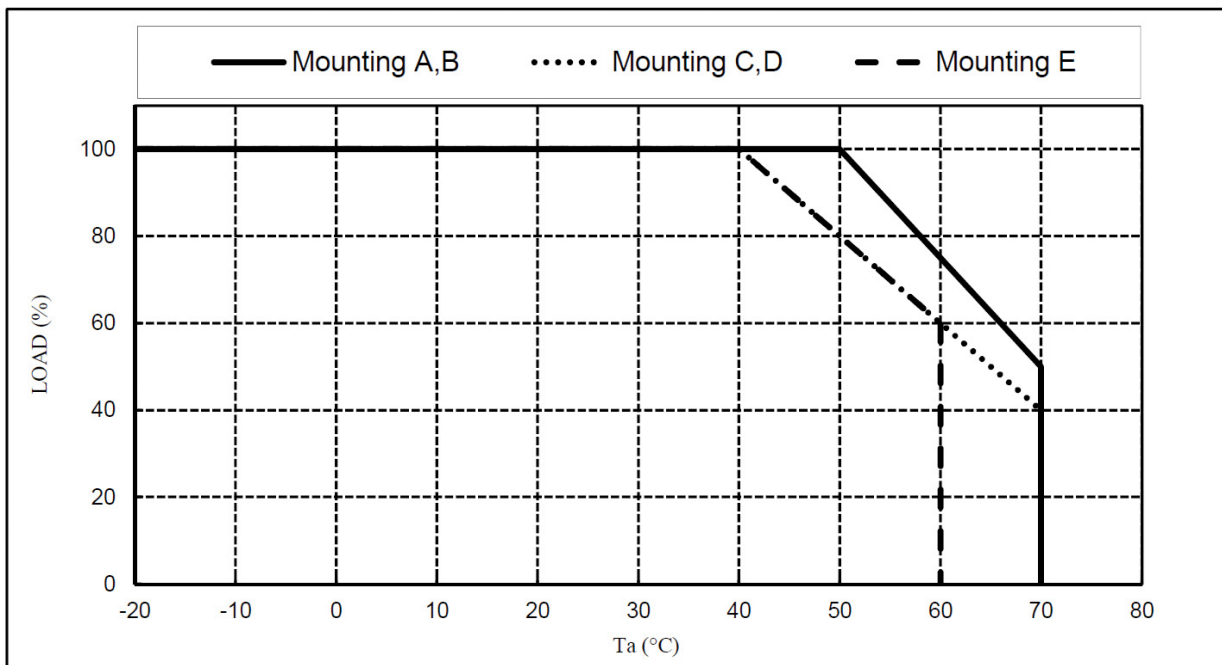


Output Derating according to the Mounting Direction



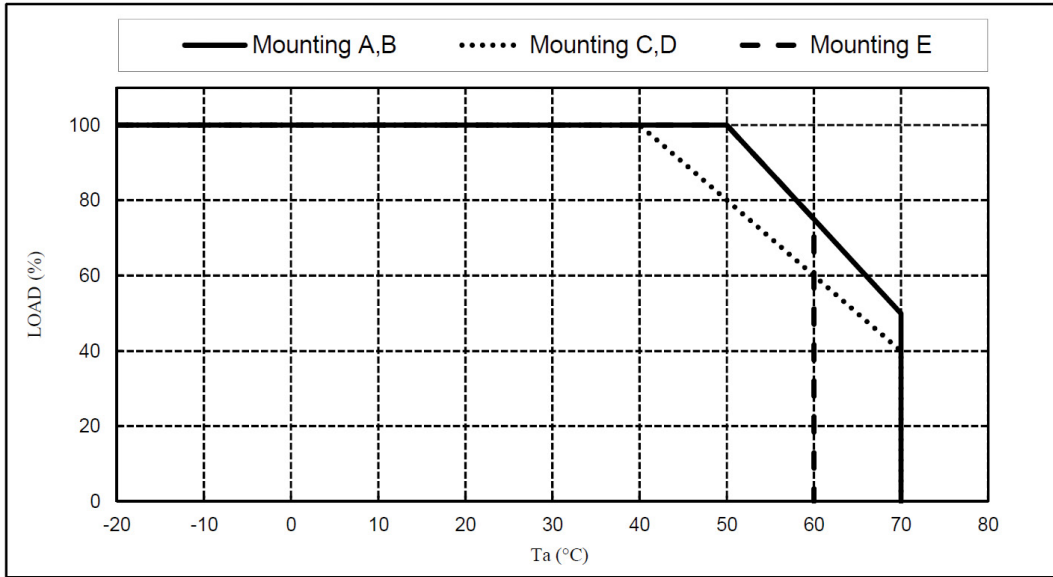
Output Derating CUS200M-12

Ta (°C)	MOUNTING A,B	MOUNTING C,D	MOUNTING E
	LOAD (%)	LOAD (%)	LOAD (%)
-20 - +40	100	100	100
50	100	80	80
60	75	60	60
65	63	50	-
70	50	40	-

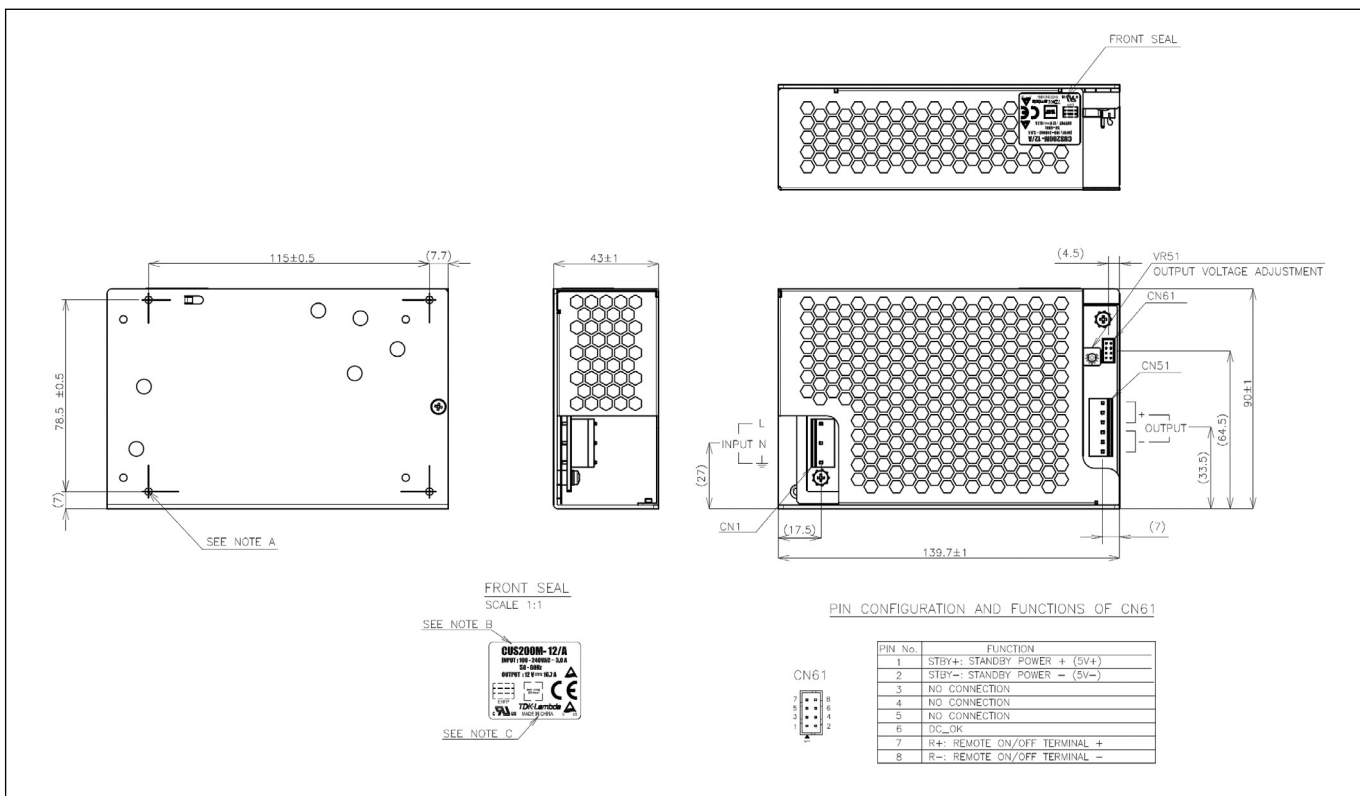


Output Derating CUS200M-18, 24, 36, 48

Ta (°C)	MOUNTING A,B	MOUNTING C,D	MOUNTING E
	LOAD (%)	LOAD (%)	LOAD (%)
-20 - +40	100	100	100
50	100	80	100
60	75	60	75
65	63	50	-
70	50	40	-

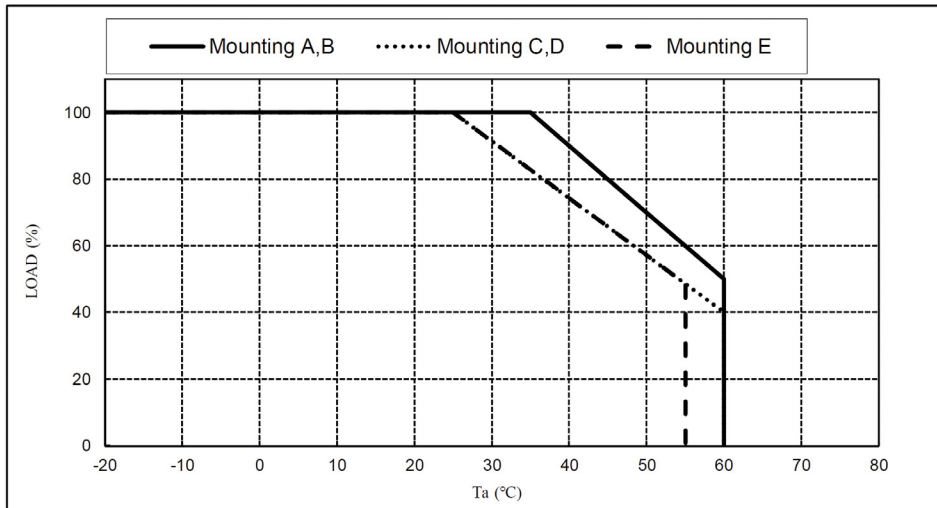


Output Drawing CUS200M/A Series



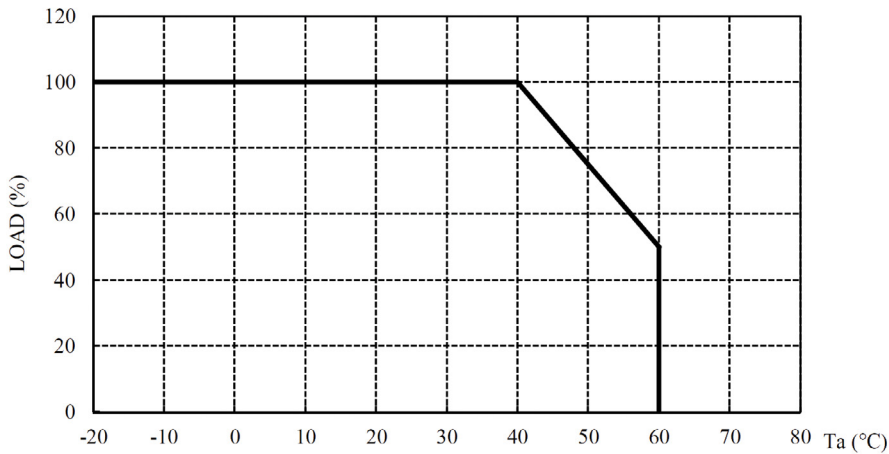
Output Derating CUS200M/A

Ta (°C)	MOUNTING A,B	MOUNTING C,D	MOUNTING E
	LOAD (%)	LOAD (%)	LOAD (%)
-20 - +25	100	100	100
35	100	82	82
45	80	65	65
50	70	57	57
55	60	48	48
60	50	40	-



Output Derating versus Operating Ambient Temp (Ta) CUS200M/A

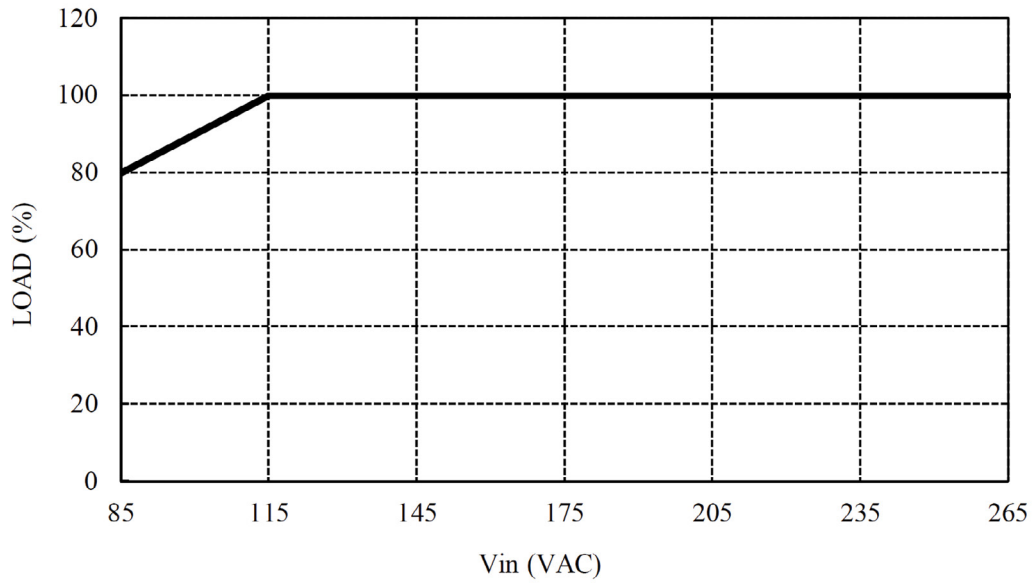
* COOLING: FORCED AIR COOLING
FOR ALL MOUNTINGS AND ALL MODELS



Ta (°C)	LOAD (%)
-20 - +40	100
50	75
60	50

Output Derating versus Input Voltage (all Models)

INPUT VOLTAGE (VAC)	LOAD (%)
85	80
115~265	100





TDK-Lambda France SAS

Tel: +33 1 60 12 71 65
france@fr.tdk-lambda.com
www.emea.lambda.tdk.com/fr



Italy Sales Office

Tel: +39 02 61 29 38 63
info.italia@it.tdk-lambda.com
www.emea.lambda.tdk.com/it



Netherlands

info@nl.tdk-lambda.com
www.emea.lambda.tdk.com/nl



TDK-Lambda Germany GmbH

Tel: +49 7841 666 0
info.germany@de.tdk-lambda.com
www.emea.lambda.tdk.com/de



Austria Sales Office

Tel: +43 2256 655 84
info@at.tdk-lambda.com
www.emea.lambda.tdk.com/at



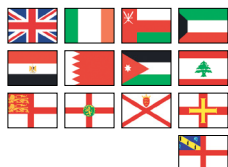
Switzerland Sales Office

Tel: +41 44 850 53 53
info@ch.tdk-lambda.com
www.emea.lambda.tdk.com/ch



Nordic Sales Office

Tel: +45 8853 8086
info@dk.tdk-lambda.com
www.emea.lambda.tdk.com/dk



TDK-Lambda UK Ltd.

Tel: +44 (0) 12 71 85 66 66
powersolutions@uk.tdk-lambda.com
www.emea.lambda.tdk.com/uk



TDK-Lambda Ltd.

Tel: +9 723 902 4333
info@tdk-lambda.co.il
www.emea.lambda.tdk.com/il



C.I.S.

Commercial Support:

Tel: +7 (495) 665 2627

Technical Support:

Tel: +7 (812) 658 0463
info@tdk-lambda.ru
www.emea.lambda.tdk.com/ru



TDK-Lambda Americas

Tel: +1 800-LAMBDA-4 or 1-800-526-2324
powersolutions@us.tdk-lambda.com
www.us.lambda.tdk.com



TDK Electronics do Brasil Ltda

Tel: +55 11 3289-9599
sales.br@tdk-electronics.tdk.com
www.tdk-electronics.tdk.com/en



TDK-Lambda Corporation

Tel: +81-3-6778-1113
www.jp.lambda.tdk.com



TDK-Lambda (China) Electronics Co. Ltd.

Tel: +86 21 6485-0777
powersolutions@cn.tdk-lambda.com
www.lambda.tdk.com.cn



TDK-Lambda Singapore Pte Ltd.

Tel: +65 6251 7211
tis.mkt@sg.tdk-lambda.com
www.sg.lambda.tdk.com



TDK India Private Limited, Power Supply Division

Tel: +91 80 4039-0660
mathew.philip@in.tdk-lambda.com
www.sg.lambda.tdk.com



X-ON Electronics

Largest Supplier of Electrical and Electronic Components

Click to view similar products for [Switching Power Supplies](#) category:

Click to view products by [TDK-Lambda](#) manufacturer:

Other Similar products are found below :

[70841011](#) [73-551-0005](#) [73-551-0048](#) [PS3E-B12F](#) [PS3E-E12F](#) [AAD600S-4-OP](#) [R22095](#) [KD0204](#) [9021](#) [LDIN100150](#) [LPM000-BBAR-01](#)
[LPX17S-C](#) [EVS57-10R6/R](#) [FP80](#) [FRV7000G](#) [22929](#) [PS3E-F12F](#) [CQM1IA121](#) [40370121900](#) [VI-PU22-EXX](#) [40370121910](#) [LDIN5075](#)
[LPM615-CHAS](#) [LPX140-C](#) [09-160CFG](#) [70841025](#) [VPX3000-CBL-DC](#) [VI-LUL-IU](#) [LPM000-BBAR-05](#) [LPM000-BBAR-08](#) [LPM124-](#)
[OUTA1-48](#) [LPM000-BBAR-07](#) [LPM109-OUTA1-10](#) [LPM616-CHAS](#) [08-30466-1055G](#) [08-30466-2175G](#) [08-30466-2125G](#) [DMB-EWG](#)
[TVQF-1219-18S](#) [6504-226-2101](#) [CQM1IPS01](#) [SP-300-5](#) [CQM1-IPS02](#) [VI-MUL-ES](#) [22829](#) [08-30466-0065G](#) [VI-RU031-EWWX](#) [08-30466-](#)
[0028G](#) [EP3000AC48INZ](#) [VP-C2104853](#)