

## Dual or Triple Output 35W Low Profile Power Supplies

### Features

- ◆ 2 x 4 x 1.06" footprint
- ◆ Output 1 isolated from outputs 2 & 3
- ◆ No minimum loading
- ◆ Medical & ITE Certifications
- ◆ Three year warranty



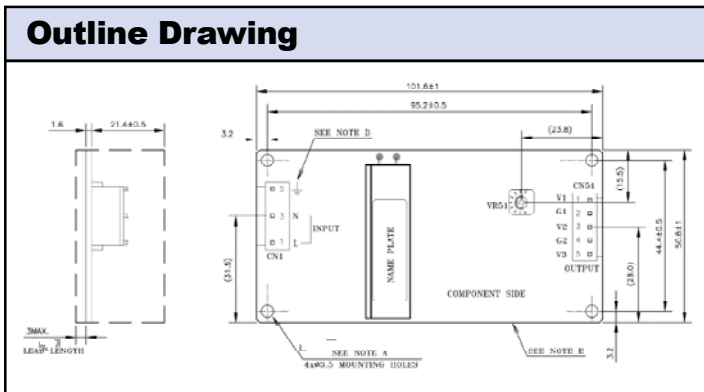
### Key Market Segments & Applications



Specifications			
Model		CUT35-522	CUT35-5FF
AC Input Voltage (1)	VAC	85 - 265VAC	
Input Frequency	Hz	47 - 63Hz	
DC Input Voltage	VDC	88 - 370VDC (No safety certification)	
Inrush Current (cold start)	A	13A at 100VAC, 32A at 230VAC	
Power Factor	-	Meets EN61000-3-2	
Input Current (100 / 200VAC)	A	1 / 0.5	
Temperature Coefficient (-20 to +70°C)	-	V1: <0.02%/°C, V2 & 3 <0.03%/°C	
Overcurrent Protection	-	> 105%	
Overvoltage Protection (2)	V	V1: 5.7-7.0, V2: 13.8 - 16.8V	V1: 5.7-7.0, V2: 17.2 - 21.0V
Efficiency (Typical at 200VAC Input)	%	81%	82%
Hold Up Time (115 / 230V input)	ms	20ms	
Leakage Current (265VAC 50Hz)	mA	<0.3mA	
Operating Temperature (3)	-	Open Frame & /B:-20 to +70°C. Derate linearly to 70% load from +55 to +70°C Cover:-20 to +60°C. Derate linearly to 70% load from +45 to +60°C	
Storage Temperature	-	-30 to +85°C	
Operating Humidity (non condensing)	-	5 - 95% RH	
Cooling	-	Convection	
Withstand Voltage	-	Input to Ground 2kVAC, Input to Output 3kVAC, Output to Ground 500VAC, V1 to V2 / V3 500VAC for 1 min.	
Isolation Resistance	-	>100M at 25C & 70%RH, Output to Ground 500VDC	
Vibration (non operating)	-	10 - 55Hz: 19.6m/s <sup>2</sup> constant sweep 1 min X, Y, Z for 1 hour	
Shock	-	< 196.1 m/s <sup>2</sup> (20G)	
Immunity	-	IEC61000-4-2 (lv 3, 4), -3 (lv3), -4 (lv 4), -5 (lv3, 4), -6 (lv 3), -8 (lv 4), -11	
Safety Agency Certifications	-	IEC/UL/CSA/EN 62368-1 (cTUVus), IEC/UL/CSA/EN 60950-1 (cTUVus), CE Mark ANSI/AAMI ES60601-1, CSA 60601-1 (cTUVus), IEC/EN60601-1 (2 x MOOP)	
Conducted & Radiated EMI	-	EN55011-B, FCC-B	
Weight (Typ)	g	Open frame: 90, Baseplate: 136, Cover: 175	
Size (WxLxH)	in (mm)	Open Frame: 2 x 4 x 1.06" (50.8 x 101.6 x 27) Baseplate: 2.22 x 4.8 x 1.1" (56.5 x 122 x 28) Cover: 2.48 x 4.92 x 1.42" (63.1 x 125 x 36)	
Warranty	yrs	Three Years	

Model Selector								
Model		Voltage (V)	Adjust Range (V)	Max Current (A)	Max Power (W)	Load Reg (mV)	Line Reg (mV)	Ripple Noise (mV)
CUT35-522	V 1	5V	5 - 5.25	3	15	100	50	120
	V2	+12V	Fixed	1.2	20.4	600	240	150
	V3	-12V	Fixed	0.85		600	240	150
CUT35-522	V1	5V	5 - 5.25	3	15	100	50	120
	V2	24V	Fixed	0.85	20.4	750	300	150
(Leave common terminal unconnected)								
CUT35-5FF	V1	5V	5 - 5.25	3	15	100	50	120
	V2	+15V	Fixed	1	19.5	750	300	150
	V3	-15V	Fixed	0.65		750	300	150
CUT35-5FF	V1	5V	5 - 5.25	3	15	100	50	120
	V2	30V	Fixed	0.65	19.5	750	300	150
(Leave common terminal unconnected)								

Note CUT35 can be configured as a dual or single output.



### Options

Suffix	Description
Blank	Open frame with JST connectors
/A	Cover with JST connectors
/B	Baseplate with JST connectors

For additional information, please visit <https://product.tdk.com/en/power/>



## X-ON Electronics

Largest Supplier of Electrical and Electronic Components

*Click to view similar products for [Switching Power Supplies](#) category:*

*Click to view products by [TDK-Lambda](#) manufacturer:*

Other Similar products are found below :

[70841011](#) [73-551-0005](#) [73-551-0048](#) [PS3E-B12F](#) [PS3E-E12F](#) [AAD600S-4-OP](#) [R22095](#) [KD0204](#) [9021](#) [LDIN100150](#) [LPM000-BBAR-01](#)  
[LPX17S-C](#) [EVS57-10R6/R](#) [FP80](#) [FRV7000G](#) [22929](#) [PS3E-F12F](#) [CQM1IA121](#) [40370121900](#) [VI-PU22-EXX](#) [40370121910](#) [LDIN5075](#)  
[LPM615-CHAS](#) [LPX140-C](#) [09-160CFG](#) [70841025](#) [VPX3000-CBL-DC](#) [LPM000-BBAR-05](#) [LPM000-BBAR-08](#) [LPM124-OUTA1-48](#)  
[LPM000-BBAR-07](#) [LPM109-OUTA1-10](#) [LPM616-CHAS](#) [08-30466-1055G](#) [08-30466-2175G](#) [08-30466-2125G](#) [DMB-EWG](#) [TVQF-1219-](#)  
[18S](#) [6504-226-2101](#) [CQM1IPS01](#) [SP-300-5](#) [CQM1-IPS02](#) [VI-MUL-ES](#) [22829](#) [08-30466-0065G](#) [VI-RU031-EWWX](#) [08-30466-0028G](#) [VI-](#)  
[LUL-EU](#) [EP3000AC48INZ](#) [VP-C2104853](#)