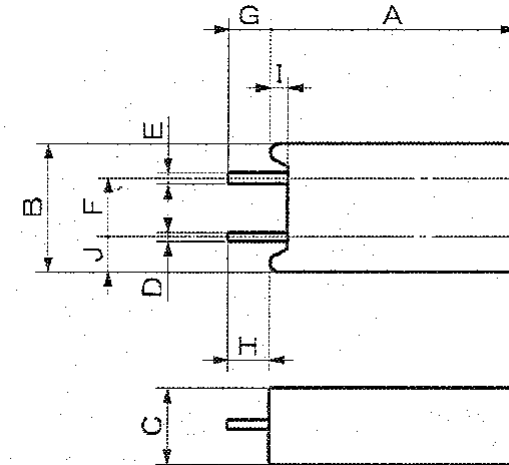


DFN51120, Resistor ceramic, 5.1Ω, 1.6W, 5% tolerance with thermal fuse
 Manufacturer UCHIHASHI, part number A5MC-5R1J

| Type Number | A5MC-5R1J | A5MC-6R8J | A5MC-100J | A5MC-150J | A5MC-220J |
|-------------------------------|-----------------|-----------|-----------|-----------|-----------|
| | L3.5 | L3.5 | L3.5 | L3.5 | L3.5 |
| Nominal Resistance Value | 5.1Ω | 6.8Ω | 10Ω | 15Ω | 22Ω |
| Resistance Tolerance | ±5% | | | | |
| Rated Functioning Temperature | 139°C | | | | |
| Rated Power | 1.6W | | | | |
| Maximum open circuit voltage | 250 V AC | | | | |
| Maximum overload power | 70W | | | | |
| | UL C-UL VDE CCC | | | | |

UL,C-UL:E50082, CSA: LR40743, VDE:923000-1171-0012

Cut-off temperature is measured with silicone oil bath of which temperature is increased at the rate of 1°C/min. Detecting current is 0.1A or less.
 Th and Tc are for C-UL(CSA) and CCC respectively.



| 寸 法 (mm) | | | | |
|----------|-----------------------------------|-----------------------------------|----------|----------|
| A | B | C | D | E |
| 25.0±1.5 | 14.0±1.0 | 9.0±1.0 | 0.8±0.05 | 0.6±0.05 |
| F | G | H | I | J |
| 5.5±1.0 | 3.5 ^{+0.5} ₋₀ | 3.5 ^{+0.5} ₋₀ | 2.0±0.5 | 4.0±0.8 |

Rev P1 Oct 16, 2007
 DFP10112
 TDK-Lambda Americas Inc.
<http://us.tdk-lambda.com/lp>

X-ON Electronics

Largest Supplier of Electrical and Electronic Components

Click to view similar products for [Ceramic Composition Resistors](#) category:

Click to view products by [TDK-Lambda](#) manufacturer:

Other Similar products are found below :

[47250](#) [CCR21K0KT](#) [RC1R0EA1K00KE](#) [109AS502KDS](#) [250AS280JDS](#) [109AS333KDS](#) [890SP501K](#) [890AS682LDS](#) [1044AS301KDS](#) [1-1623720-7](#) [HPC1C394K](#) [DFN51120](#) [PCF2CT631R121K](#) [PCF2C561K](#) [PCF1CT631R221K](#) [PCF1C221K](#) [PCF1/2C683K](#) [PCF1/2C471K](#) [PCF1/2C151K](#) [PCF1/2C100K](#) [HPC1C681K](#) [HPC1/2C332K](#) [HPC1/2C471K](#) [HPC1/2CT52A102K](#) [HPC1C102K](#) [HPC1C103K](#) [HPC1C121K](#) [HPC1C123K](#) [HPC1C153K](#) [HPC1C183K](#) [HPC1C220K](#) [HPC1C221K](#) [HPC1C223K](#) [HPC1C224K](#) [HPC1C272K](#) [HPC1C331K](#) [HPC1C332K](#) [HPC1C390K](#) [HPC1C470K](#) [HPC1C471K](#) [HPC1C561K](#) [HPC1C680K](#) [HPC1C820K](#) [HPC2C100K](#) [HPC2C101K](#) [HPC2C103K](#) [HPC2C121K](#) [HPC2C151K](#) [HPC2C182K](#) [HPC2C123K](#)