

## 10-100W Low Profile DIN Rail Mount Power Supplies



Industrial



Test



Semi-Fab



The low profile DRL DIN rail power supply series provides a reliable solution for many industrial and building automation applications. With double insulation and a safety Class II input, connection to earth is not required. The NEC Class 2 compliant output, in accordance with UL 1310, allows operation where output currents are to be limited under fault conditions. Available in four power ranges, the DRL series provide a choice of 12, 15 and 24 output voltages

### Features

- High Efficiency, up to 90%
- UL1310 Class 2 Compliant
- Low No Load Power Consumption
- Long E-Capacitor Life (>8 years @ 40°C, 75% Load, 230VAC)
- Class II, Wide Range Input (85-264VAC)

### Benefits

- Lower Operating Costs, Improved Thermal Performance
- Suitable for Building Automation requiring NEC Class 2
- Energy Saving
- Long Field Life
- Global Application, No Earth Required

### Model Selector

Model	Output Voltage (V)	Adjustment Range (V)	Maximum Current (A)	Maximum Power (W)	Efficiency (115/230VAC) (%)	Oversvoltage (V)	UL1310 Class 2
DRL10-12-1	12	-	0.84	10.08W	85 / 85	13.8 - 16.2	Yes
DRL30-12-1	12	12 - 15	2.1	25.2W	87 / 88	16 - 19	Yes
DRL60-12-1	12	12 - 15	4.5	54W	87 / 87	16 - 19	Yes
DRL30-15-1	15	12 - 15	1.68	25.2W	87 / 88	16 - 19	Yes
DRL60-15-1	15	12 - 15	3.6	54W	87 / 87	16 - 19	Yes
DRL10-24-1	24	-	0.42	10W	87 / 87	29 - 35	Yes
DRL30-24-1	24	24 - 28	1.25	30W	88 / 90	29 - 35	Yes
DRL60-24-1	24	24 - 28	2.5	60W	89 / 90	29 - 35	Yes
DRL100-24-1	24	24 - 28	4.2	100.8W	88 / 90	29 - 35	No
DRL100-24-1/C2	24	-	3.67	88W	88 / 90	26 - 30	Yes

Specification					
Model		DRL10	DRL30	DRL60	DRL100
<b>Input</b>					
Input Voltage range	V	85 - 264Vac, 120 - 373Vdc*			
Input Surge Voltage	-	300Vac for 5s			
Input Frequency	Hz	47 - 63			
Input Current (110/230Vac)	A	0.18 / 0.12	0.6 / 0.4	1.2 / 0.8	2.0 / 1.1
Inrush Current at 230Vac (typ) (Cold Start)	A	40	50	60	60
Leakage Current	-	Not applicable			
Power Factor (115/230Vac)	-	0.56 / 0.42	0.6 / 0.4	0.5 / 0.43	0.5 / 0.43
Harmonic Compliance	-	Meets IEC61000-3-2 Class A			
No Load Power Consumption	W	<0.3	<0.3	<0.5	<0.5
Hold Up Time (typ) at 115Vac Input	ms	20	20	20	15
Efficiency	-	See model selector table			
Average Efficiency (1)	%	76.8	83.6	>87	87
Conducted & Radiated EMI	-	EN55032-B Conducted, EN55032-A Radiated			
Immunity	-	See model selector table			
Insulation Class	-	Construction suitable for Class II installation			
Safety Agency Certifications	-	IEC/UL/CSA/EN 62368-1, 60950-1, UL508 Listed, UL1310 Class 2 (2), CE Mark			

Immunity				
Test	Standard	Test Level	Criteria	Notes
ESD	EN61000-4-2	3	A	8kV air discharge
Radiated Susceptibility	EN61000-4-3	3	A	-
Electrical Fast Transient Burst	EN61000-4-4	4	A	-
Surge	EN61000-4-5	3	A	-
Conducted Susceptibility	EN61000-4-6	3	A	-
Magnetic fields	EN61000-4-8	4	A	-
Voltage Dips and Input Interruptions	EN61000-4-11 Class 3 Industrial	0% for 1 cycle	A	-
		40% for 10/12 cycles	B	-
		70% for 25/30 cycles	B	-
		80% for 250/300 cycles	B	-
SEMI F47 Line Dip	SEMI F47	-	-	> 200Vac input

Specification					
Model		DRL10	DRL30	DRL60	DRL100
<b>Output</b>					
Output Voltage Adjustment	-	See model selector table			
Switching Frequency (230Vac 100% Load) (3)	kHz	~103.6	96.9 - 103.8	87 - 94	84.4 - 95.5
Line Regulation	mV	12 - 15V Outputs: 120; 24V Output: 240			
Load Regulation	mV	12 - 15V Outputs: 120; 24V Output: 240			
Ripple & Noise	mV	12 - 15V Outputs: 120; 24V Output: 240			
Temperature Coefficient	%/°C	<±0.02			
Minimum Load	-	No minimum load required			
Overcurrent Protection	%	>105 Hiccup mode with auto recovery			
Overvoltage Protection	V	See model selector table			
Overtemperature Protection	-	-			
Remote Sense	-	-			
Remote On/Off	-	-			
DC Good	-	-			
Indicators & Signals	-	Green LED indicates DC is OK			
Parallel Operation	-	Not available			
Series Operation	-	Possible, see installation manual			

Specification					
Model		DRL10	DRL30	DRL60	DRL100
<b>Environmental</b>					
Operating Temperature (-25°C start-up)	°C	DRL100 (<115Vac): -20 to +71, derate linearly from 100% to 40% load from 40 to 71 DRL100: -20 to +71, derate linearly from 100% to 60% load from 51 to 71 DRL100 (<115Vac): -20 to +71, derate linearly from 100% to 40% load from 40 to 71			
Storage Temperature	°C	-40 to +85			
Operating Humidity (non condensing)	%RH	5 - 95			
Cooling	-	Convection			
Altitude	m	3,000			
Withstand Voltage (For 1 minute)	VAC	Input to Output 3,000			
Isolation Resistance	MΩ	>100 at 25°C, 70%RH & 500VDC			
Vibration (Operating)	-	IEC 60068-2-6, Sine Wave, 10-500Hz, 19.6m/s <sup>2</sup> (2G peak) 10 min per cycle, 60 min for all X,Y,Z directions			
Shock	-	IEC 60068-2-27, Half Sine Wave, 39.2m/s <sup>2</sup> (4G ) for a duration of 22ms 3 shocks for each 3 directions, 9 times in total			
<b>Other</b>					
Weight (Typ)	g	65	120	200	280
Size (WxHxD)	mm	18 x 91 x 55.6	36 x 91 x 55.6	54 x 91 x 55.6	72 x 91 x 55.6
Size (WxHxD)	Inches	0.71 x 3.58 x 2.19	1.42 x 3.58 x 2.19	2.13 x 3.58 x 2.19	2.83 x 3.58 x 2.19
Case Material	-	Flame Retardant Polycarbonate (UL94 V-0)			
DIN Rail Type	-	Suitable for mounting on DIN Rail TS-35/7.5 or TS35/15			
MTBF - Telcordia SR-332 issue 3**	Hours	1,401,366	704,390	369,824	437,110
Warranty	yrs	3			

**Notes**

See website for detailed specifications, test methods and installation manuals

(1) Measured at 25%, 50%, 75% and 100% load conditions

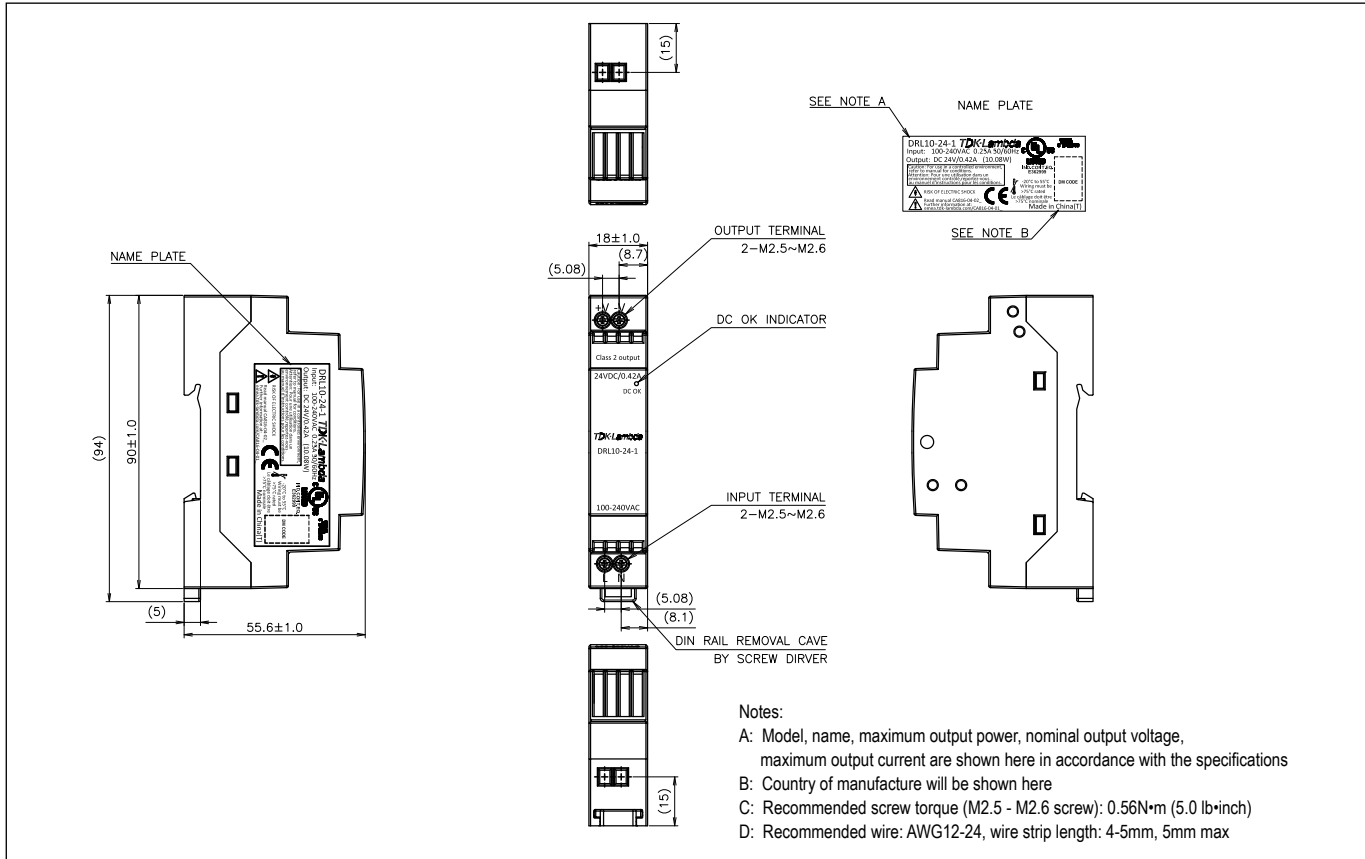
(2) NEC Class 2 in accordance with UL1310. Excludes DRL100-24-1 model

(3) See evaluation data on website

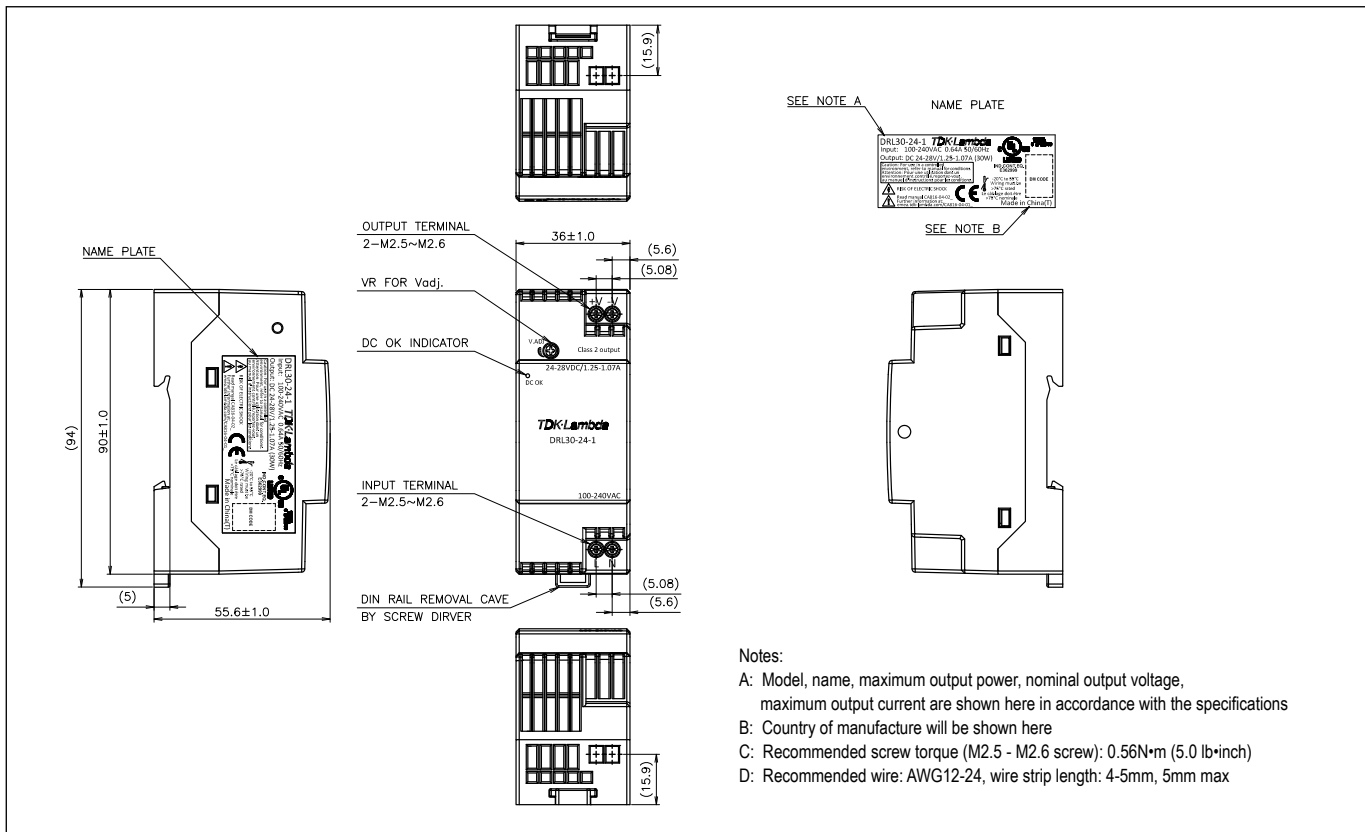
\* Safety certified for AC input only

\*\*24V output model, 55°C ambient, full load, 230Vac input

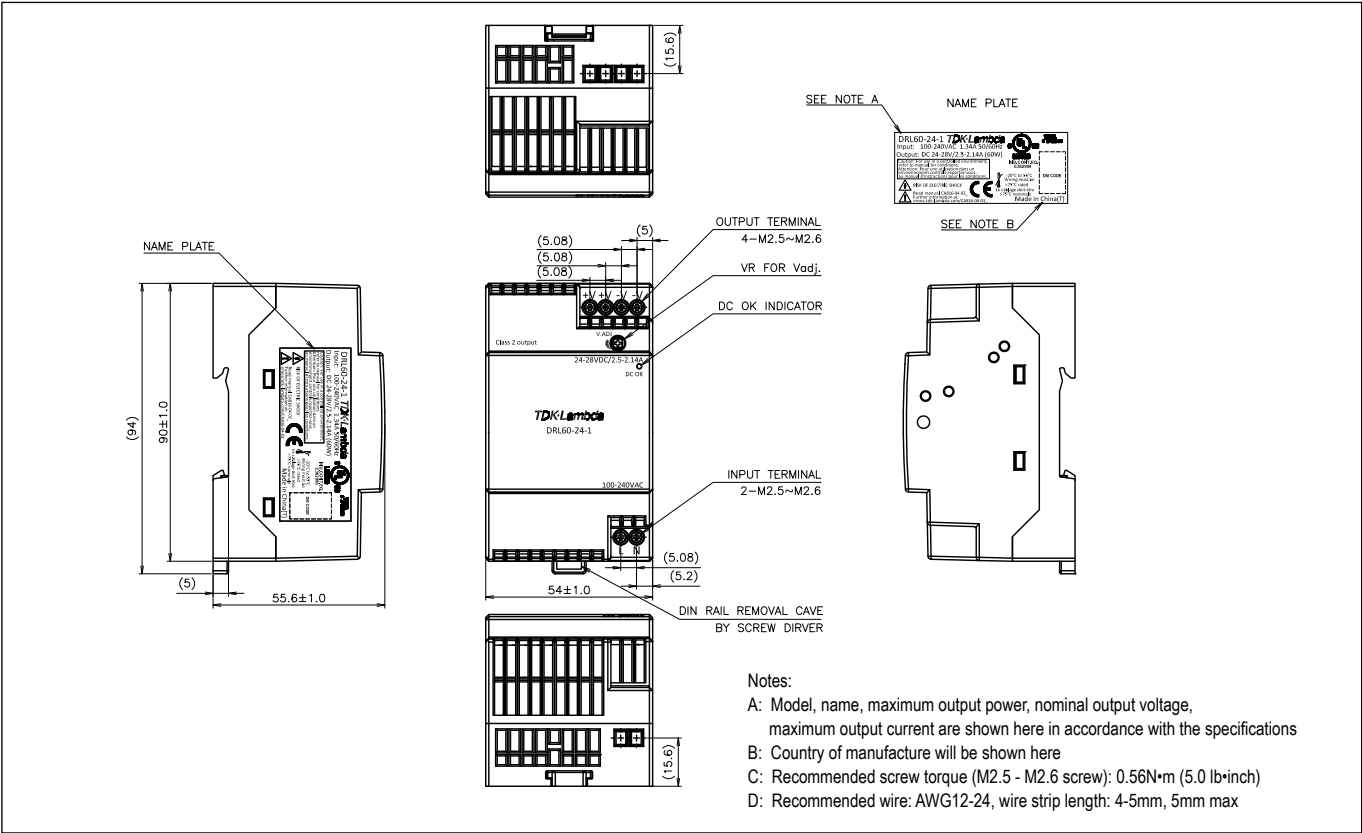
## Outline Drawing DRL10-1



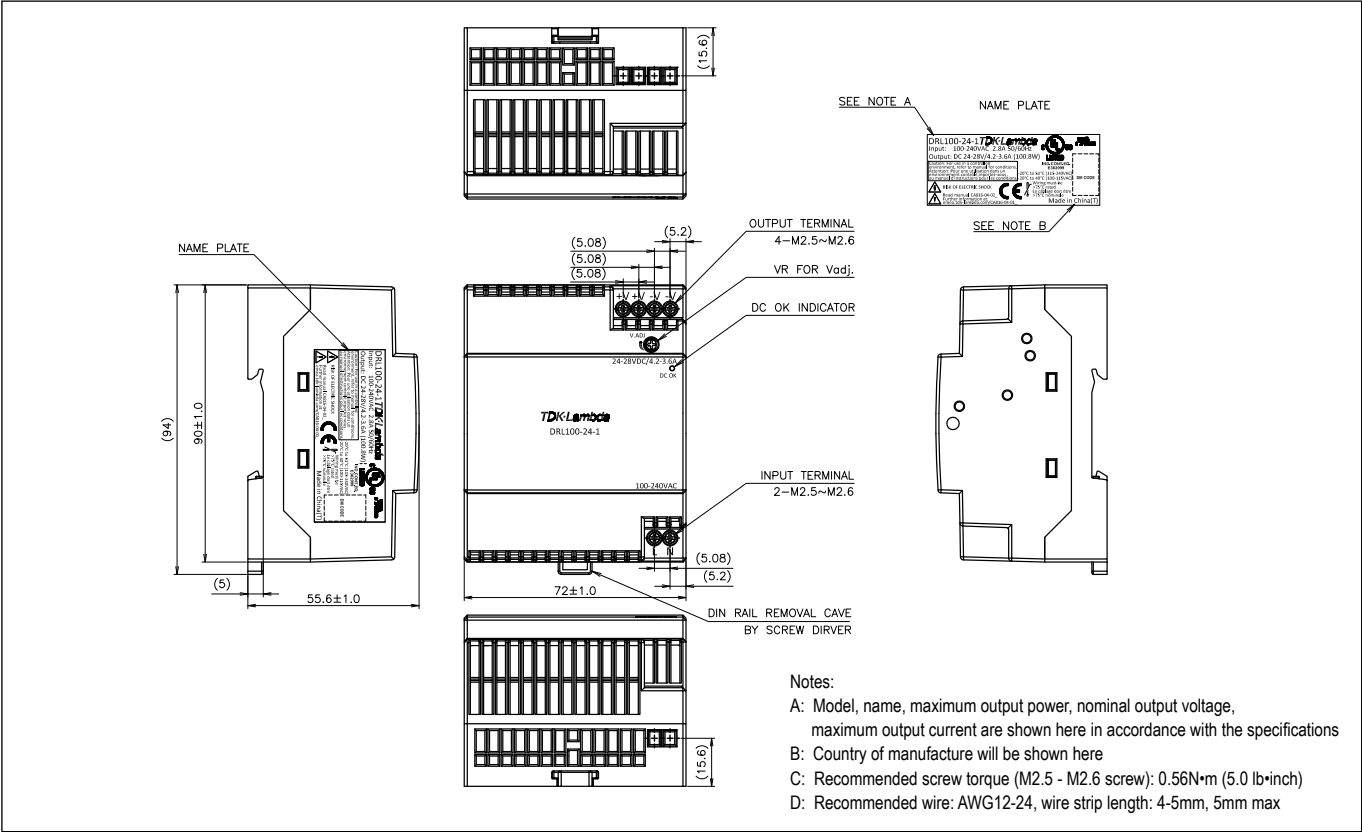
## Outline Drawing DRL30-1



## Outline Drawing DRL60-1



## Outline Drawing DRL100-1





## TDK-Lambda France SAS

Tel: +33 1 60 12 71 65  
france@fr.tdk-lambda.com  
www.emea.lambda.tdk.com/fr



## Italy Sales Office

Tel: +39 02 61 29 38 63  
info.italia@it.tdk-lambda.com  
www.emea.lambda.tdk.com/it



## Netherlands

info@nl.tdk-lambda.com  
www.emea.lambda.tdk.com/nl



## TDK-Lambda Germany GmbH

Tel: +49 7841 666 0  
info.germany@de.tdk-lambda.com  
www.emea.lambda.tdk.com/de



## Austria Sales Office

Tel: +43 2256 655 84  
info@at.tdk-lambda.com  
www.emea.lambda.tdk.com/at



## Switzerland Sales Office

Tel: +41 44 850 53 53  
info@ch.tdk-lambda.com  
www.emea.lambda.tdk.com/ch



## Nordic Sales Office

Tel: +45 8853 8086  
info@dk.tdk-lambda.com  
www.emea.lambda.tdk.com/dk



## TDK-Lambda UK Ltd.

Tel: +44 (0) 12 71 85 66 66  
powersolutions@uk.tdk-lambda.com  
www.emea.lambda.tdk.com/uk



## TDK-Lambda Ltd.

Tel: +9 723 902 4333  
info@tdk-lambda.co.il  
www.emea.lambda.tdk.com/il



## C.I.S.

### Commercial Support:

Tel: +7 (495) 665 2627

### Technical Support:

Tel: +7 (812) 658 0463  
info@tdk-lambda.ru  
www.emea.lambda.tdk.com/ru



## TDK-Lambda Americas

Tel: +1 800-LAMBDA-4 or 1-800-526-2324  
powersolutions@us.tdk-lambda.com  
www.us.lambda.tdk.com



## TDK Electronics do Brasil Ltda

Tel: +55 11 3289-9599  
sales.br@tdk-electronics.tdk.com  
www.tdk-electronics.tdk.com/en



## TDK-Lambda Corporation

Tel: +81-3-6778-1113  
www.jp.lambda.tdk.com



## TDK-Lambda (China) Electronics Co. Ltd.

Tel: +86 21 6485-0777  
powersolutions@cn.tdk-lambda.com  
www.lambda.tdk.com.cn



## TDK-Lambda Singapore Pte Ltd.

Tel: +65 6251 7211  
tts.mkt@sg.tdk-lambda.com  
www.sg.lambda.tdk.com



## TDK India Private Limited, Power Supply Division

Tel: +91 80 4039-0660  
mathew.philip@in.tdk-lambda.com  
www.sg.lambda.tdk.com

For additional information, please visit  
<https://product.tdk.com/en/power/>



## X-ON Electronics

Largest Supplier of Electrical and Electronic Components

*Click to view similar products for [DIN Rail Power Supplies](#) category:*

*Click to view products by [TDK-Lambda](#) manufacturer:*

Other Similar products are found below :

[PS-S6024](#) [DVP01PU-S](#) [DVP06AD-S](#) [DVP06XA-S](#) [DVDPNET-SL](#) [DVPDT01-S](#) [DVPPS01](#) [PS-6012](#) [PS9Z-5R1G](#) [PS-C24024](#)  
[DVP08ST11N](#) [DVPACAB530](#) [DVPCOPM-SL](#) [DVPEN01-SL](#) [DVPPF01-S](#) [ADNB008-48-1PM-C](#) [ADNB017-24-1PM-C](#) [ADNB040-24-1PM-C](#) [ADNB034-12-1PM-C](#) [SS14011524](#) [PS-UPS40](#) [PSC-6024](#) [PSD-A60W12](#) [96PS-A120WDIN](#) [PSD-A60W48](#) [PSD-A40W12](#) [PSD-A40W24](#) [SMP21-L20-DC24V-5A](#) [PSD-A40W48](#) [S8T-DCBU-02](#) [PS-S4024](#) [NTPS-24-1.3](#) [PST-96024](#) [S82YVSC4P](#) [PS-S4005](#) [PS-10024](#)  
[PS-S10024](#) [PS-C12024](#) [PSP-480S24](#) [PS-C48024](#) [PSC-2024](#) [PSC-4012](#) [PSC-4048](#) [PSC-9615](#) [PSC-15124](#) [PSC-15148](#) [PSC-24148](#) [PSC-48148](#) [TRIO-PS-2G/1AC/12DC/5/C2LP](#) [QUINT4-PS/1AC/12DC/15](#)