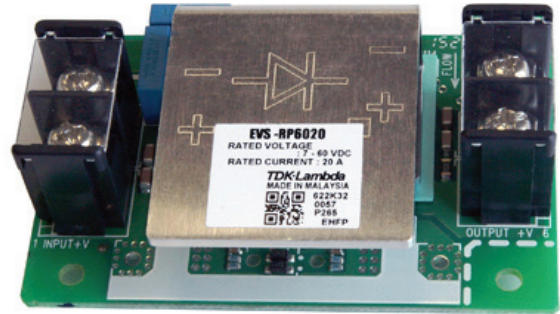


20A Blocking Diode Module

Features

- ◆ Provides Reverse Current Protection
- ◆ Low Voltage Drop ORing FET
- ◆ Compact Size
- ◆ Open Frame or L Bracket Construction

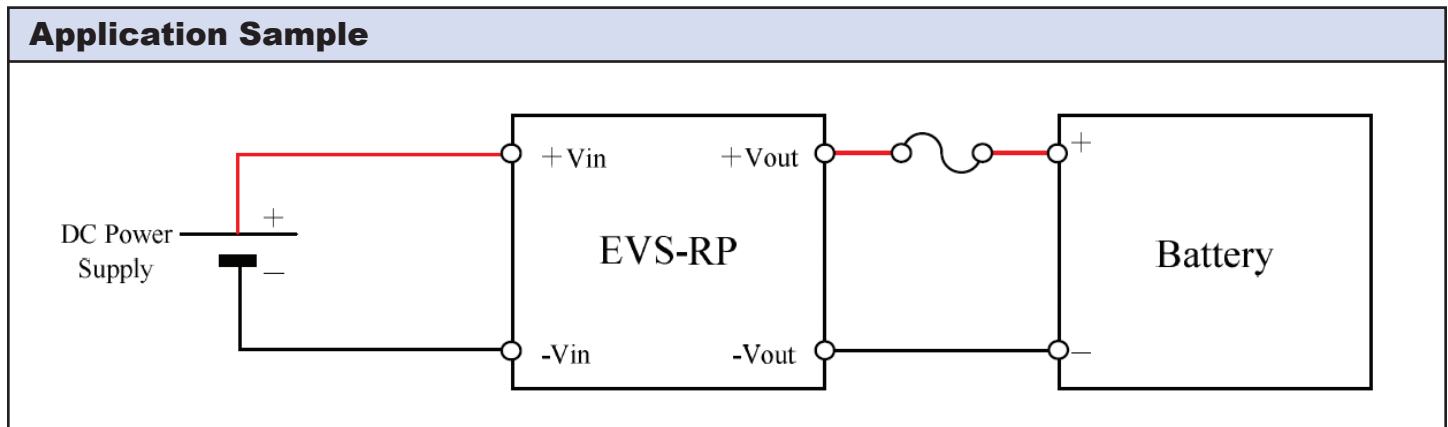


Key Market Segments & Applications

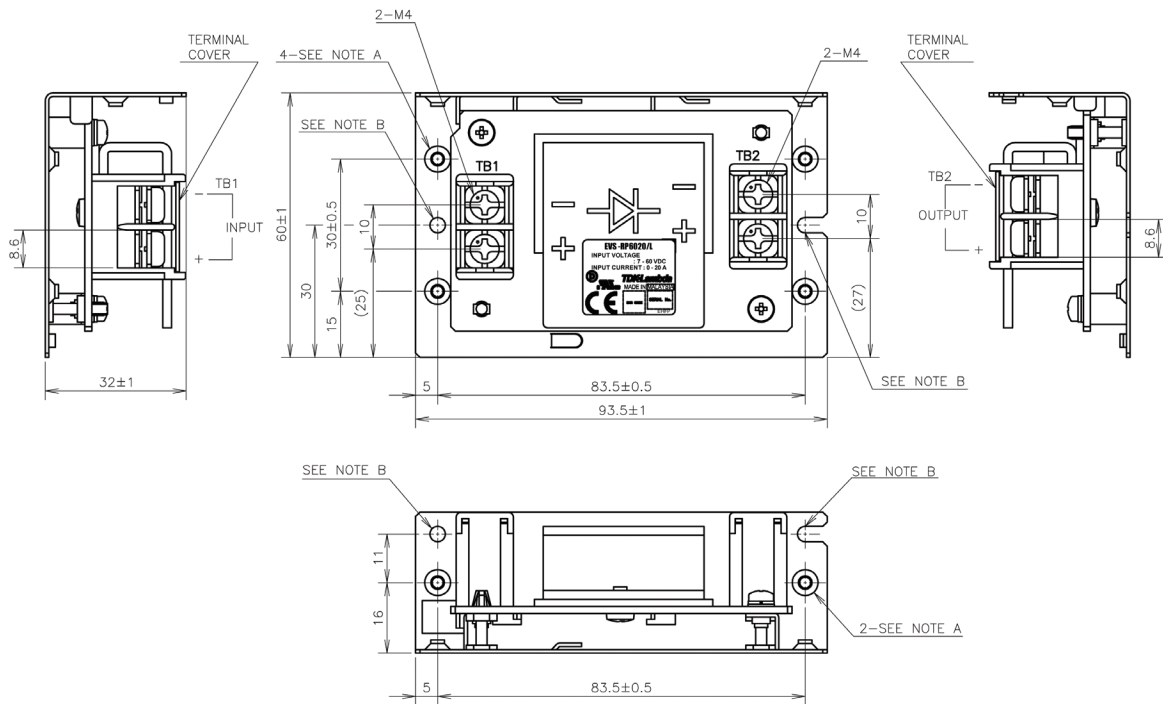


Specifications		
Model	EVS-RP6020	
Input Voltage Range	VDC	7 - 60VDC
Maximum Current	A	20A
Voltage Drop	VDC	0.2V
Maximum Reverse Current	μ A	50 μ A
Parallel Operation	-	Maximum 2 units, no current sharing function
Cooling	-	Convection or Forced Air
Operating Temperature	$^{\circ}$ C	Convection Cooling: -20 to +74 $^{\circ}$ C, derate linearly to 50% load from 50 to 74 $^{\circ}$ C Forced Air (≥ 1.4 m/s) : -20 to +74 $^{\circ}$ C, derate linearly to 60% load from 60 to 74 $^{\circ}$ C
Storage Temperature	$^{\circ}$ C	-40 to +85 $^{\circ}$ C
Humidity (non condensing)	%RH	Operating: 20 - 90%RH, Storage: 10 - 90%RH
Withstand Voltage	VAC	Input or output to ground: 500VAC for 1 minute
Isolation Resistance	M Ω	Input or output to ground >100M Ω at 25 $^{\circ}$ C, 70%RH and 500VDC
Vibration (non operating)	-	10-55Hz (sweep for 1 min), 19.6m/s ² constant X, Y, Z each for 1 hour
Shock	-	196m/s ²
Safety Agency Certifications	-	UL60950-1, CSA60950-1, EN60950-1, CE mark for LVD and RoHS2
Size	mm/in	Open Frame: 50 x 26 x 77.5mm, 1.97 x 1.02 x 3.05" L Bracket: 60 x 32 x 93.5mm, 2.36 x 1.26 x 3.68"
Weight	g	Open frame: 60g, L Bracket: 100g
Warranty	yrs	Five Years

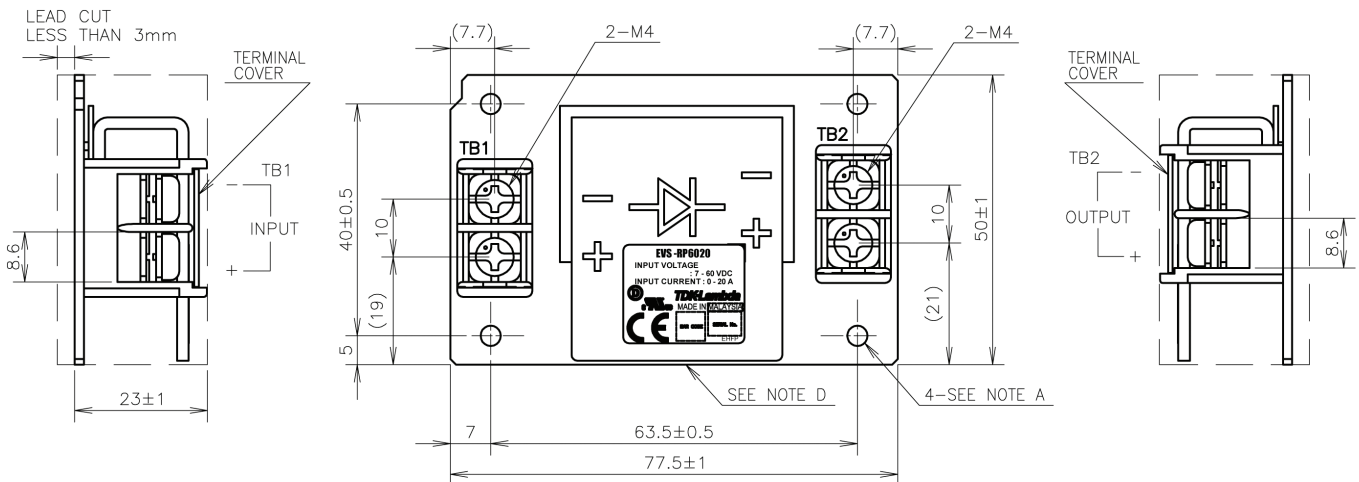
Note: See Installation Manual for full details, test methods of parameters and application notes.



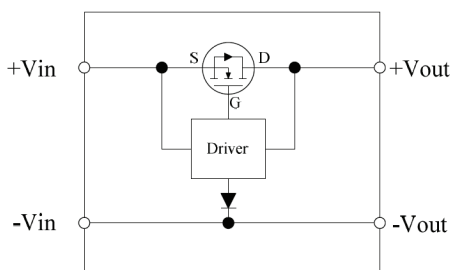
Outline Drawing EVS-RP6020/L (L bracket)



Outline Drawing EVS-RP6020 (Open frame)



Block Diagram



Options

Suffix	Description
-	Open frame construction
/L	L bracket construction

For Additional Information, please visit
us.tdk-lambda.com/lp/products/evs-series.htm



X-ON Electronics

Largest Supplier of Electrical and Electronic Components

Click to view similar products for [Isolated DC/DC Converters](#) category:

Click to view products by [TDK-Lambda](#) manufacturer:

Other Similar products are found below :

[ESM6D044440C05AAQ](#) [FMD15.24G](#) [PSL486-7LR](#) [Q48T30020-NBB0](#) [JAHW100Y1](#) [SPB05C-12](#) [SQ24S15033-PS0S](#) [18952](#) [19-130041](#)
[CE-1003](#) [CE-1004](#) [GQ2541-7R](#) [RDS180245](#) [MAU228](#) [J80-0041NL](#) [DFC15U48D15](#) [XGS-0512](#) [XGS-1205](#) [XGS-1212](#) [XGS-2412](#) [XGS-2415](#) [XKS-1215](#) [06322](#) [NCT1000N040R050B](#) [SPB05B-15](#) [SPB05C-15](#) [L-DA20](#) [DCG40-5G](#) [QME48T40033-PGB0](#) [XKS-2415](#) [XKS-2412](#)
[XKS-1212](#) [XKS-1205](#) [XKS-0515](#) [XKS-0505](#) [XGS-2405](#) [XGS-1215](#) [XGS-0515](#) [PS9Z-6RM4](#) [73-551-5038I](#) [AK1601-9RT](#) [VI-R5022-](#)
[EXWW](#) [PSC128-7iR](#) [RPS8-350ATX-XE](#) [DAS1004812](#) [VI-LJ11-iz](#) [PQA30-D24-S24-DH](#) [VI-M5F-CQ](#) [VI-LN2-EW](#) [VI-PJW01-CZY](#)