

16A Non-isolated Point of Load

Features

- ◆ Standard SIP Footprint
- ◆ 6.0-14VDC Input
- ◆ 0.8-5.5V Outputs
- ◆ Through Hole Mounting
- ◆ High operating efficiency (up to 94%)
- ◆ Constant switching frequency
- ◆ Starts with pre-biased output



Key Market Segments & Applications



Specifications		
Model	iAD	
Nominal Output Voltage	VDC	0.8 - 5.5V
Input Voltage Range	VDC	6 - 14V
Input Current (max)	A	18A
Output Voltage Tolerance	VDC	N/A
Ripple & Noise (max) (pk-pk)	mV	100
Line Regulation (max)	mV	15
Load Regulation (max)	mV	22
Overload Protection	%	Inception - 28A; Short circuit - auto recovery
Overvoltage Protection	-	N/A
Remote Sense	-	Yes
Remote On / Off	-	Positive or Negative Logic available, see Model Selector
Sequencing	-	Yes
Temperature (operating)	°C	-40 to 125
Temperature (storage)	°C	-55 to 125
Humidity (operating)	-	20-95% RH Non condensing
Humidity (storage)	-	10-95% RH Non condensing
Cooling	-	Convection or forced air
Isolation Voltage	-	none
Vibration (non-operating)	-	5 to 50Hz@0.5g (4.9m/s ²), & 50 to 500Hz@1.5g (14.7m/s ²) per Bellcore TR-EOP-000063-5.4.4
Shock	-	196.1m/s ²
Safety Agency Certifications	-	UL60950 (US and Canada), VDE0805 (IEC60950), CB scheme (IEC60950)
Weight (max)	g	12
Size (LxWxH)	mm	50.8 x 7.9 x 14
Warranty	-	3 Years

Note: See website for detailed specifications and test methods

Not Recommended For New Design

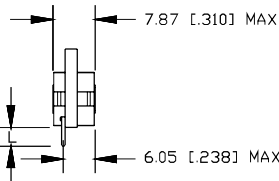
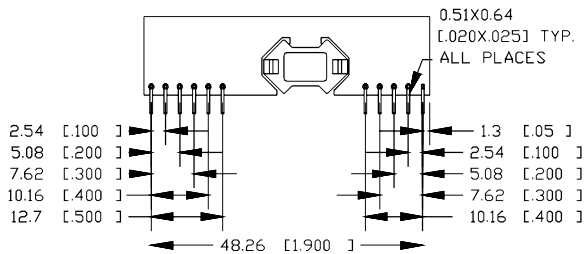
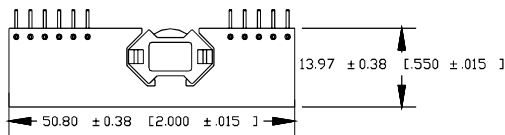
Model Selector

Model	Output Voltage (V)	Output Adjust (V)	Output Curr. (A)	Max. Output Power (W)	Efficiency at Full Load (%)	Pos. Logic On/Off	Neg. Logic On/Off
iAD12016A008V-000-R	0.8 - 5.5	0.8 - 5.5	16	80	94% @ 5V	X	
iAD12016A008V-001-R	0.8 - 5.5	0.8 - 5.5	16	80	94% @ 5V		X

Outline Drawing

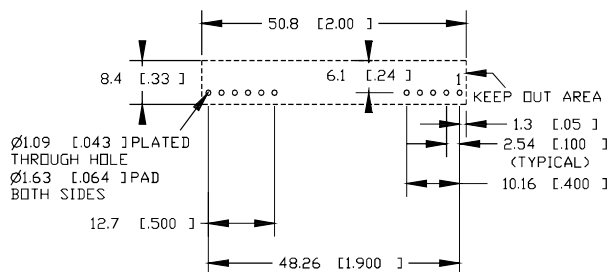
Mechanical Specifications:

Dimensions are in mm [in]. Unless otherwise specified tolerances are: x.x ±0.5 [0.02], x.xx ±0.25 [0.010]



Short options L = 3.3 [0.13]

Recommended Hole Pattern: (Top View)



Pinout

PIN	Function	PIN	Function
1	Vout	6	GND
2	Vout	7	Vin
3	Sense	8	Vin
4	Vout	9	Sequencing
5	GND	10	Trim
		11	On / Off

Other DC-DC Products

CC-E	1.5-12W, 1 to 2 Outputs, 5 to 48VDC Input
PX	10-40W, 1 to 3 Outputs, 12 to 48VDC Input
iPB	15-35W, 1.5-5V Output, 36-75VDC Input, Pico Brick
iS	Sixteenth Bricks DC-DC
iE	Eighth Brick DC-DC
iQ	Quarter Brick DC-DC
PAH300/350	Half Brick DC-DC
PAF	Full Brick DC-DC
FPS	1kW to 3kW, 12 to 48V Output, AC-DC Front Ends
PFE	AC-DC Power Module
iA, iB	Non Isolated DC-DC Converters

For Additional Information, please visit <https://product.tdk.com/info/en/products/power/index.html>



Not Recommended For New Design

X-ON Electronics

Largest Supplier of Electrical and Electronic Components

Click to view similar products for [Non-Isolated DC/DC Converters](#) category:

Click to view products by [TDK-Lambda](#) manufacturer:

Other Similar products are found below :

[PSR152.5-7IR](#) [APTH003A0X-SRZ](#) [SPM1004-3V3C](#) [R-785.0-05](#) [10E24-P15-10PPM](#) [1E24-P4-25PPM-SHV-5KV](#) [PROPOWER-3.3V](#)
[MYGTM01210BZN](#) [JRCS016A0S4-HZ](#) [40C24-N250-I5-H](#) [40A24-P30-E](#) [10C24-N250-I10-AQ-DA](#) [4AA24-P20-M-H](#) [3V12-N0.8](#) [3V24-P1](#)
[3V24-N1](#) [BMR4672010/001](#) [BMR4652010/001](#) [6AA24-P30-I5-M](#) [6AA24-N30-I5-M](#) [BM2P101X-Z](#) [ROF-78E12-0.5SMD-R](#) [RPMA5.0-](#)
[8.0/OF](#) [PTV03010WAD](#) [PTV05020WAH](#) [PTV12010LAH](#) [PTV12020WAD](#) [R-7212D](#) [R-7212P](#) [R-78AA5.0-1.0SMD](#) [30A24-N15-E](#) [10A12-](#)
[P4-M](#) [10C24-N250-I5](#) [10C24-P125](#) [10C24-P250-I5](#) [6A24-P20-I10-F-M-25PPM](#) [1A24-P30-F-M-C](#) [TSR 1-24150SM](#) [1/2AA24-N30-I10](#)
[1C24-N125](#) [12C24-N250](#) [V7806-1500](#) [PTV12020LAH](#) [PTV05010WAH](#) [PTN04050CAZT](#) [PTH12020WAD](#) [PTH12020LAS](#)
[PTH05050YAH](#) [PTH05T210WAH](#) [PTH05030WAZ](#)