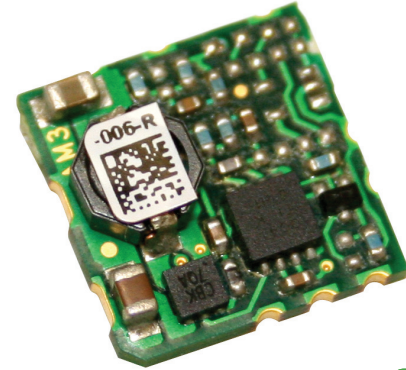


24.7W (4.5A), 16.5W (3A), Non-isolated SMT Point Of Load

Features

- ◆ DOSA Compatible Footprint
- ◆ Surface Mountable
- ◆ Constant Switching Frequency
- ◆ Edge Plated Castellations (EPC)
 - Inspectable Solder Joints
- ◆ No external loop tuning components needed
- ◆ Excellent Transient Response



Key Market Segments & Applications

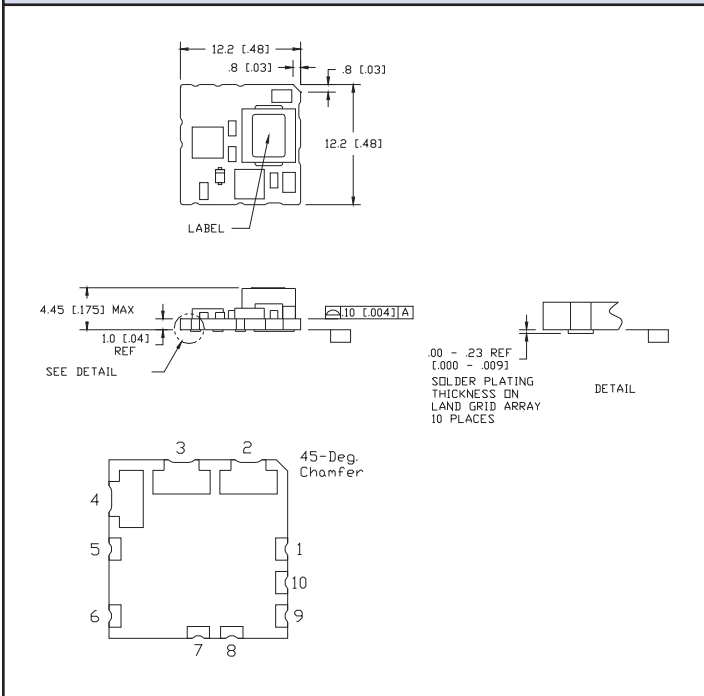


Specifications			
Model		iCF05	iCF12
DC Output Voltage	V	0.6 - 3.63	0.7 - 5.5
DC Input Voltage	V	2.4 - 5.5	4.5 - 14
Efficiency	%	82 - 92	85 - 93.5
Output Voltage Tolerance	%		±3
Switching Frequency	kHz		600
Line Regulation	mV	3	3
Load Regulation	mV	6	6
External Load Capacitance	uF		47 - 1000
Output Ripple and Noise	mVpp	25	15
Overcurrent Protection	A		Hiccup Type
Remote On / Off	-	Negative Logic (For Positive Logic Contact Factory)	
Remote Sense	-	(+ Sense, compensating up to 0.5V	
Power Good	-	Not available	Yes, Low on fail
Operating Temp	°C	-40 to 115 (see thermal data on website)	
Storage Temperature	°C	-55 to 125	
Safety Agency Approvals	-	IEC/UL/CSA/EN62368-1, 60950-1, CE Mark	
Weight	g / oz	1.5g / 0.53 oz	
Size (LxWxH)	mm / in.	12.2 x 12.2 x 4.45 / 0.48 x 0.48 x 0.175	
Warranty	yrs	3 years	

Model Selector							
Model	Input Voltage (V)	Output Current (A)	Output Voltage (V)	Positive Logic On/Off	Negative Logic On/Off	Sequencing	Solder Bumping
iCF05003A006V-001-R	2.4 - 5.5	3	0.60 - 3.63	-	X	X	EPC
iCF05003A006V-003-R	2.4 - 5.5	3	0.60 - 3.63	-	X	-	EPC
iCF05003A006V-006-R	2.4 - 5.5	3	0.60 - 3.63	X	-	-	LGA
iCF05003A006V-007-R	2.4 - 5.5	3	0.60 - 3.63	-	X	-	LGA
iCF12003A007V-003-R	4.5 - 14	3	0.70 - 5.5	-	X	-	EPC
iCF12003A007V-007-R	4.5 - 14	3	0.70 - 5.5	-	X	-	LGA
iCF12005A007V-006-R	4.5 - 14	5	0.70 - 5.5	X	-	-	LGA
iCF12005A007V-007-R	4.5 - 14	5	0.70 - 5.5	-	X	-	LGA

Preferred Model

Outline Drawing (EPC Type)



Pinout

PIN	Function	PIN	Function
1	ON / OFF	6	TRIM
2	VIN	7	GND
3	GND	8	no connection
4	VOUT	9	no connection
5	SENSE	10	PWR GOOD

Other Industrial Products

CC-E	1.5 - 30W 5, 12, 24 or 48V input isolated DC-DC converters
PX	10 - 60W 12, 24 or 48V input isolated DC-DC converters
iAF, iBF, iCG	6 - 20A DOSA2 non isolated DC-DC converters

For Additional Information, please visit
<https://product.tdk.com/en/power/>



X-ON Electronics

Largest Supplier of Electrical and Electronic Components

Click to view similar products for [Non-Isolated DC/DC Converters](#) category:

Click to view products by [TDK-Lambda](#) manufacturer:

Other Similar products are found below :

[PSR152.5-7IR](#) [APTH003A0X-SRZ](#) [SPM1004-3V3C](#) [R-785.0-05](#) [10E24-P15-10PPM](#) [1E24-P4-25PPM-SHV-5KV](#) [PROPOWER-3.3V](#)
[MYGTM01210BZN](#) [JRCS016A0S4-HZ](#) [40C24-N250-I5-H](#) [10C24-N250-I10-AQ-DA](#) [4AA24-P20-M-H](#) [3V12-N0.8](#) [3V24-P1](#) [3V24-N1](#)
[BMR4672010/001](#) [BMR4652010/001](#) [6AA24-P30-I5-M](#) [6AA24-N30-I5-M](#) [BM2P101X-Z](#) [ROF-78E12-0.5SMD-R](#) [RPMA5.0-8.0/OF](#)
[PTV03010WAD](#) [PTV05020WAH](#) [PTV12010LAH](#) [PTV12020WAD](#) [R-7212D](#) [R-7212P](#) [R-78AA5.0-1.0SMD](#) [30A24-N15-E](#) [10A12-P4-M](#)
[10C24-N250-I5](#) [10C24-P125](#) [10C24-P250-I5](#) [6A24-P20-I10-F-M-25PPM](#) [1A24-P30-F-M-C](#) [TSR 1-24150SM](#) [1/2AA24-N30-I10](#) [1C24-N125](#)
[12C24-N250](#) [V7806-1500](#) [PTV12020LAH](#) [PTV05010WAH](#) [PTN04050CAZT](#) [PTH12020WAD](#) [PTH12020LAS](#) [PTH05050YAH](#)
[PTH05T210WAH](#) [PTH05030WAZ](#) [V7803-2000R](#)