

150-200W Single Output General Purpose Power Supplies

Features

- ◆ Very low cost
- ◆ Small Size
- ◆ Wide Range AC Input
- ◆ Convection or Fan Cooled
- ◆ Five year warranty
- ◆ 1.6" high (For 1U racking)



Key Market Segments & Applications



Specifications		Model	LS200 (Enclosed style with internal fan)	LS200/L (U channel style - no internal fan)
AC Input Voltage (300VAC for 5s)	VAC		85 - 264VAC	85 - 264VAC (3)
Input Frequency	Hz			47 - 63Hz
DC Input Voltage	VDC			120 - 373VDC*
Inrush Current (230VAC, cold start)	A			60
Power Factor	-		Meets EN61000-3-2, -3 (Typical PF 0.98/0.95)(1)	
Input Current (115/230VAC)	A			3.5 / 1.7 (typical)
Temperature Coefficient	-			<0.02%/°C (0 - 50°C)
Overcurrent Protection	-		>105% of nominal or peak. Constant current style	
Overvoltage Protection (2)	V		3.3V: 3.8 - 4.45V, 5V: 5.75 - 6.75V, 7.5V: 8.6 - 10.1V, 12V: 15.1 - 17.75V 15V: 17.25 - 20.25V, 24V: 30.25 - 35.5V, 36V: 41.4 - 48.6V, 48V: 60 - 69.6V	
Overtemperature Protection (2)	-			Yes
Hold Up Time (115/230V input)	ms			20ms
Leakage Current (230VAC 60Hz)	mA			<1mA
Remote Sense	-			Yes
Remote On/Off	-			On: 0 - 0.8V; Off: 3 - 12V
LED Indicator	-			Green LED = On
Operating Temperature	°C		Fan or forced air rating: -25 to +70°C. Derate linearly to 60% load from +50 to +70°C	
Storage Temperature	°C			-40 to +85°C
Operating Humidity	-			20 - 90% RH (non condensing)
Storage Humidity	-			10 - 95% RH (non condensing)
Cooling	-		Internal Fan (air exhausts from fan end)	Convection or customer supplied airflow
Withstand Voltage	-		Input to Ground 1.5kVAC, Input to Output 3kVAC, Output to Ground 500VAC for 1 min.	
Isolation Resistance	-		>100M at 25°C & 70%RH, Output to Ground 500VDC	
Vibration (non operating)	-		10 - 55Hz: 19.6m/s ² constant sweep 1 min X, Y, Z for 1 hour	
Shock	-		< 196.1 m/s ² (20G)	
Immunity	-		IEC61000-4-2, -3, -4, -5, -6, -8, -11	
Safety Agency Certifications	-		IEC/EN/UL/CSA60950-1, IEC/EN/UL/CSA62368-1 and CE Mark	
Conducted & Radiated EMI	-		EN55011/EN55022-B, FCC--B	
Weight (Typ)	g		700	600
Size (LxWxH)	in		7.8 x 3.9 x 1.61"	
Warranty	yrs		Five Years	

Notes:

- (1) 115 / 230VAC input
- (2) Recycle AC to reset
- (3) (Derate linearly to 65% load from 115VAC to 85VAC)

*Safety certified for AC input only

Output Ratings

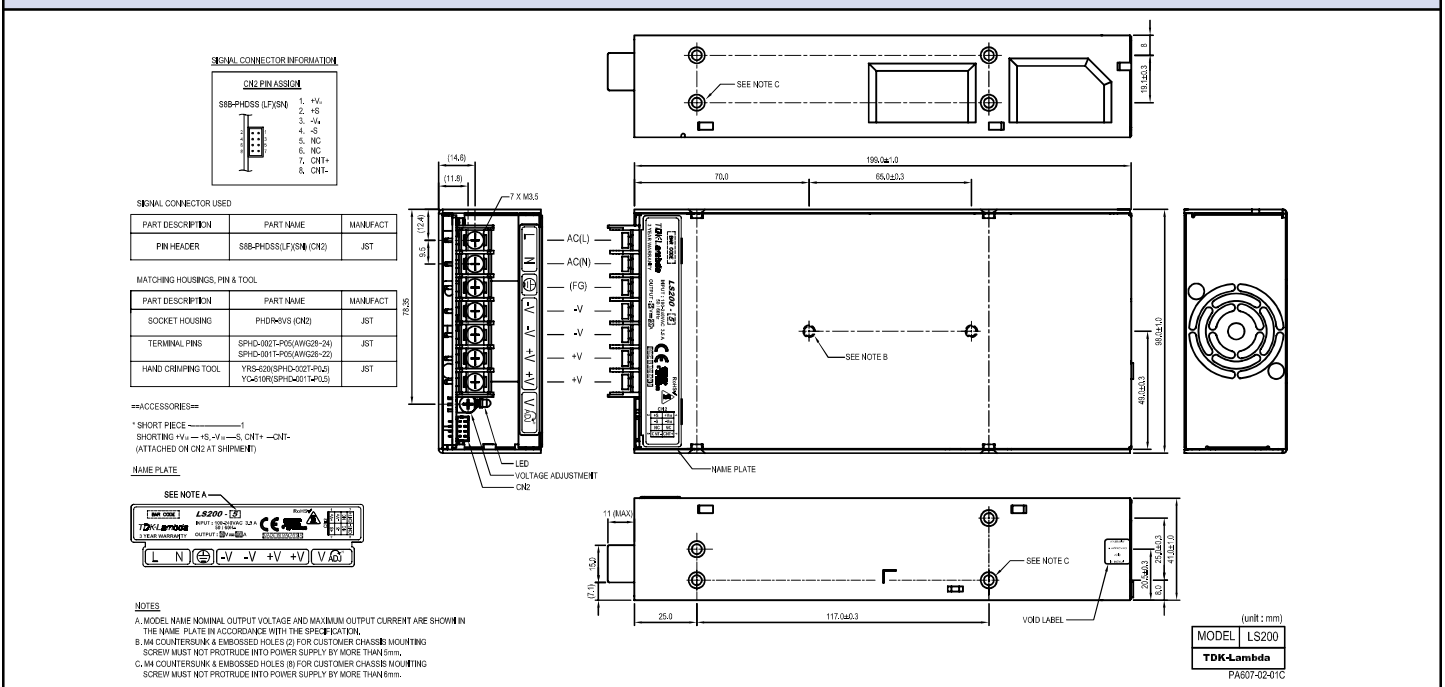
Model	Adjust Range Voltage (V)	Max Current Forced Air(A) ⁽⁴⁾	Max Current Convect.(A) ⁽⁵⁾	Peak Current (A)	Load Reg (mV)	Line Reg (mV)	Ripple Noise (mV)	Efficiency (typ) % ⁽¹⁾	
LS200-3.3	3.3V	3.0 - 3.6	40.0	N/A	-	40	16	80	67 / 68
LS200-5	5V	4.75 - 5.5	40.0	N/A	-	40	20	80	72 / 75
LS200-7.5	7.5V	6.8 - 8.2	26.7	N/A	-	40	20	80	74 / 77
LS200-12	12V	10.8 - 14.4	16.7	N/A	-	96	48	120	76 / 79
LS200-15	15V	13.5 - 16.5	13.4	N/A	-	120	60	120	80 / 83
LS200-24	24V	22 - 28.8	8.4	N/A	10.4	192	96	120	82 / 84
LS200-36	36V	32 - 40	5.6	N/A	6.9	288	144	150	82 / 85
LS200-48	48V	42 - 57.6	4.2	N/A	-	384	192	200	82 / 85
LS200-3.3/L	3.3V	3.0 - 3.6	40.0	26	-	40	16	80	67 / 68
LS200-5/L	5V	4.75 - 5.5	40.0	26	-	40	20	80	72 / 75
LS200-7.5/L	7.5V	6.8 - 8.2	26.7	17.3	-	40	20	80	74 / 77
LS200-12/L	12V	10.8 - 14.4	16.7	11.6	-	96	48	120	76 / 79
LS200-15/L	15V	13.5 - 16.5	13.4	9.3	-	120	60	120	80 / 83
LS200-24/L	24V	22 - 28.8	8.4	5.8	10.4	192	96	120	82 / 84
LS200-36/L	36V	32 - 40	5.6	3.9	6.9	288	144	150	82 / 85
LS200-48/L	48V	42 - 57.6	4.2	2.9	-	384	192	200	82 / 85

Notes

(4) With internal fan version LS200-xx or LS200-xx/L version with external airflow.

(5) See Installation manual for derating curve.

Outline Drawing



NOTES

A. MODEL NAME NOMINAL OUTPUT VOLTAGE AND MAXIMUM OUTPUT CURRENT ARE SHOWN IN THE NAME PLATE IN ACCORDANCE WITH THE SPECIFICATION.

B. M4 COUNTERSINK & EMBOSSED HOLES: (I) FOR CUSTOMER CHASSIS MOUNTING SCREW MUST NOT PROTRUDE INTO POWER SUPPLY BY MORE THAN 5mm.

C. M4 COUNTERSINK & EMBOSSED HOLES: (II) FOR CUSTOMER CHASSIS MOUNTING SCREW MUST NOT PROTRUDE INTO POWER SUPPLY BY MORE THAN 5mm.

Other Related Products

LS25 - 150	25W to 150W low cost
HWS15 - 1800	15W to 1800W limited lifetime warranty
SWS300 - 1000	300 to 1000W single output

Options

Suffix	Description
/L	No cover or fan (U channel)
Blank	Cover and fan

For Additional Information, please visit
<https://product.tdk.com/info/en/products/power/index.html>



X-ON Electronics

Largest Supplier of Electrical and Electronic Components

Click to view similar products for [Switching Power Supplies](#) category:

Click to view products by [TDK-Lambda](#) manufacturer:

Other Similar products are found below :

[70841011](#) [73-551-0005](#) [73-551-0048](#) [PS3E-B12F](#) [PS3E-E12F](#) [AAD600S-4-OP](#) [R22095](#) [KD0204](#) [9021](#) [LDIN100150](#) [LPM000-BBAR-01](#)
[LPX17S-C](#) [EVS57-10R6/R](#) [FP80](#) [FRV7000G](#) [22929](#) [PS3E-F12F](#) [CQM1IA121](#) [40370121900](#) [VI-PU22-EXX](#) [40370121910](#) [LDIN5075](#)
[LPM615-CHAS](#) [LPX140-C](#) [09-160CFG](#) [70841025](#) [VPX3000-CBL-DC](#) [VI-LUL-IU](#) [LPM000-BBAR-05](#) [LPM000-BBAR-08](#) [LPM124-](#)
[OUTA1-48](#) [LPM000-BBAR-07](#) [LPM109-OUTA1-10](#) [LPM616-CHAS](#) [08-30466-1055G](#) [08-30466-2175G](#) [08-30466-2125G](#) [DMB-EWG](#)
[TVQF-1219-18S](#) [6504-226-2101](#) [CQM1IPS01](#) [SP-300-5](#) [CQM1-IPS02](#) [VI-MUL-ES](#) [22829](#) [08-30466-0065G](#) [VI-RU031-EWWX](#) [08-30466-](#)
[0028G](#) [EP3000AC48INZ](#) [VP-C2104853](#)