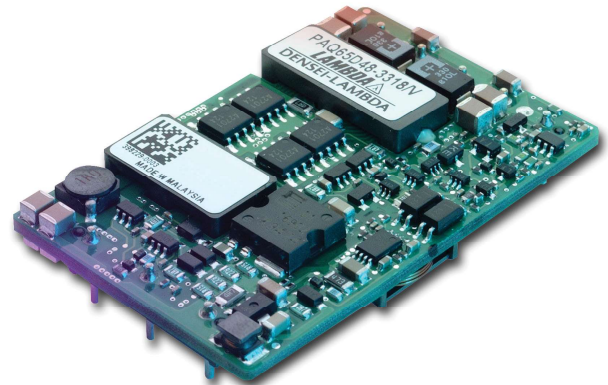


High Efficiency Dual Output Quarter Brick DC-DC Converters

Features

- ◆ Industry Standard Package
- ◆ Low voltage outputs to 1.8V
- ◆ Output Currents up to 17A
- ◆ Designed for telecom standards
- ◆ Output voltage adjustment - independent or tracking (/C)
- ◆ Remote On / Off
- ◆ High Efficiency
- ◆ ASIC Design
- ◆ No minimum load



Key Market Segments & Applications

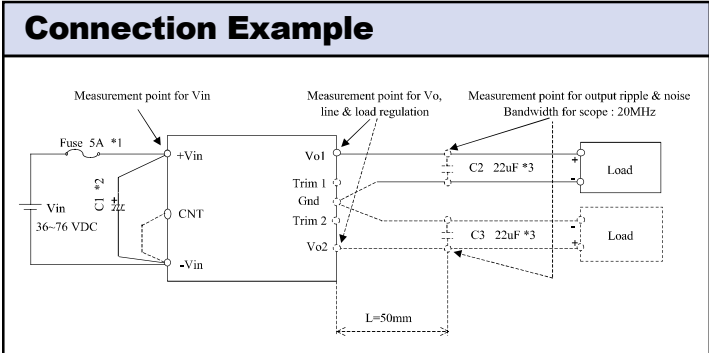
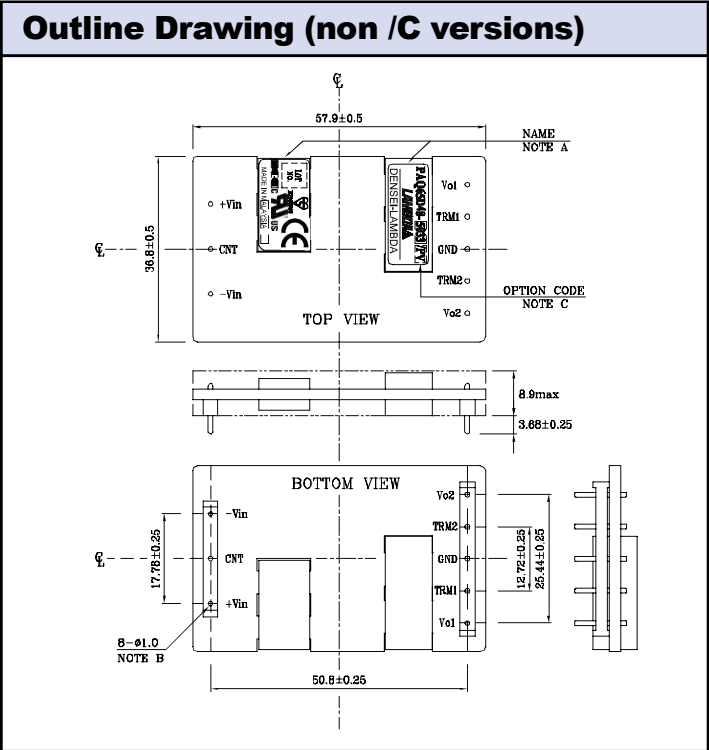
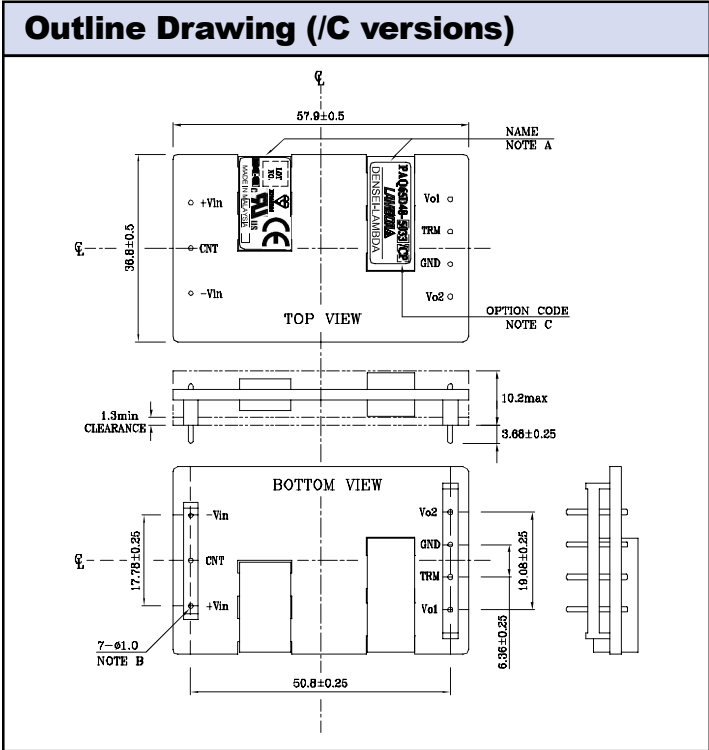
Specifications										
Model		PAQ65D482518		PAQ65D483318		PAQ65D483325		PAQ65D485033		
		V01	V02	V01	V02	V01	V02	V01	V02	
Nominal Output Voltage	VDC	2.5	1.8	3.3	1.8	3.3	2.5	5.0	3.3	
Output Current (Max)	A	15	17	15	17	15	17	13	16	
Output Current (Max total)	A	Io1 + Io2 = 18								
Max Output Power	W	37.5		49.5		49.5		65.0		
Efficiency (Typ)	%	86.0		86.0		87.0		90.0		
Input Voltage range	VDC	36 - 76V								
Input Current (typ)	A	0.82		0.97		1.10		1.36		
Output Voltage Accuracy	%	±2								
Output Voltage Trim Range (1)	VDC	2.25-2.75	1.62-1.98	2.97-3.63	1.62-1.98	2.97-3.63	2.25-2.75	4.50-5.50	2.97-3.63	
Max Ripple & Noise	mV	75	75	100	75	100	75	100	100	
Max Line Regulation	mV	± 6.6								
Max Load Regulation	mV	± 16.5								
Overcurrent Protection (OCP) (2)	%	105 - 160% (See options table for either manual or automatic reset)								
Overvoltage Protection (OVP)	%	120 - 140% (See options table for either manual or automatic reset)								
Remote On / Off	%	Low = ON, Open = OFF /P option; Low = OFF, Open = ON (See options)								
Operating Temperature	°C	-40°C to +85°C								
Operating & Storage Humidity	-	5 - 95% RH, Non condensing								
Storage Temperature	°C	-40°C to +100°C								
Cooling	-	Convection, or forced air								
I/O Isolation Voltage	-	Input to Output 1.5k VDC for 1 min.								
Vibration (non operating)	-	10 - 55Hz (1 minute), amplitude 0.825mm (49m/s ² max), X, Y, Z 1 hour each								
Shock	m/s ²	196.1 m/s ²								
Safety Agency Approvals	-	UL1950, CSA950, EN60950, & CE								
Weight (Typ)	g	40								
Size (WxHxD)	mm	36.8 x 8.9 x 57.9 (36.8 x 10.2 x 57.9 /C version)								
Warranty	yr	2 Years								

Note: See Installation Manual for full details, test methods of parameters and application notes.

1. Specify /C option for one trim pin - tracking outputs, leave blank for individual adjustment

2. Io1 + Io2

OBSOLETE



Options

Suffix	Trim Pin	On/Off Logic	OVP /OCP
Blank	Independent	Negative, short = ON	Manual Reset
/ P	-	Positive, Open = ON	-
/ V	-	-	Auto-restart
/ C	Tracking	-	-

/V, /PV, /CV, /CPV are US Standard US stock items
Note suffix letter order : /C followed by P followed by V

Other DC-DC Products

X	10, 15, & 20W 24V & 48VDC input DC-DC converters
PAF	500 & 600W Full brick DC-DC
PAH	50W to 200W Half brick DC-DC, single & dual outputs
PAQ	Up to 100W Quarter brick DC-DC, single outputs
SX	20W surface mount 24V & 48VDC-DC

For Additional Information, please visit us.tdk-lambda.com/lp/products/paq-series.htm



OBSOLETE

X-ON Electronics

Largest Supplier of Electrical and Electronic Components

Click to view similar products for [Isolated DC/DC Converters](#) category:

Click to view products by [TDK-Lambda](#) manufacturer:

Other Similar products are found below :

[ESM6D044440C05AAQ](#) [FMD15.24G](#) [PSL486-7LR](#) [Q48T30020-NBB0](#) [JAHW100Y1](#) [SPB05C-12](#) [SQ24S15033-PS0S](#) [18952](#) [19-130041](#)
[CE-1003](#) [CE-1004](#) [GQ2541-7R](#) [RDS180245](#) [MAU228](#) [J80-0041NL](#) [DFC15U48D15](#) [XGS-0512](#) [XGS-1205](#) [XGS-1212](#) [XGS-2412](#) [XGS-2415](#) [XKS-1215](#) [06322](#) [NCT1000N040R050B](#) [SPB05B-15](#) [SPB05C-15](#) [L-DA20](#) [DCG40-5G](#) [QME48T40033-PGB0](#) [XKS-2415](#) [XKS-2412](#)
[XKS-1212](#) [XKS-1205](#) [XKS-0515](#) [XKS-0505](#) [XGS-2405](#) [XGS-1215](#) [XGS-0515](#) [PS9Z-6RM4](#) [73-551-5038I](#) [AK1601-9RT](#) [VI-R5022-](#)
[EXWW](#) [PSC128-7iR](#) [RPS8-350ATX-XE](#) [DAS1004812](#) [VI-LJ11-iz](#) [PQA30-D24-S24-DH](#) [VI-M5F-CQ](#) [VI-LN2-EW](#) [VI-PJW01-CZY](#)