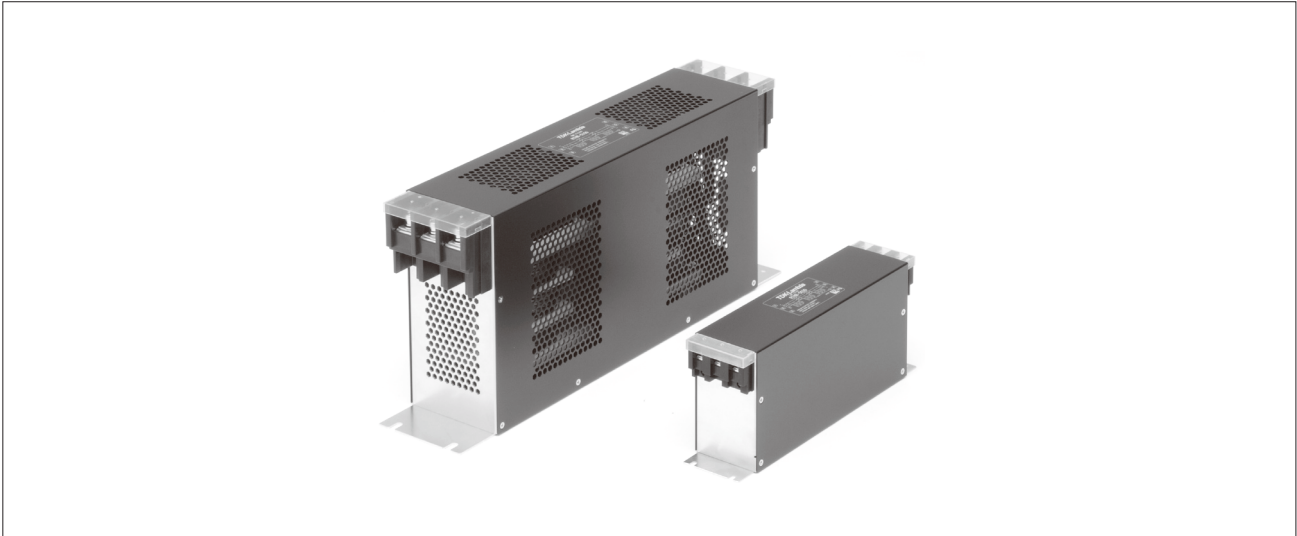


RTHB SERIES

High Attenuation Three-Phase Filter with Many Current Variations (Rectangular Type)



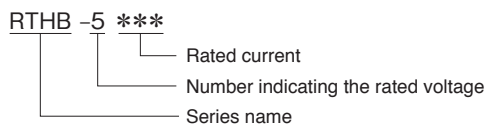
FEATURES

- 6 to 150A wide range lineup.
- Rectangular shape with L2 high attention.
- Thin type.
- Self-tightening screws and an open/close type cover make wiring work easier.
- Terminal block cover included for safety.

SAFETY STANDARDS

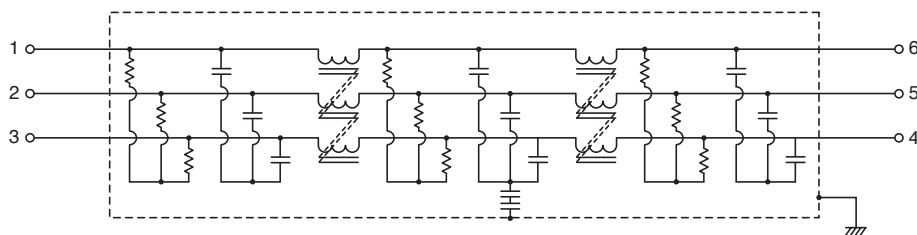
UL1283 UL File No. E62388
 EN60939-1/-2 (ENEC14) Licence Ref. No. SE/07115-4

PRODUCT IDENTIFICATION



CONFORMITY TO RoHS Directive

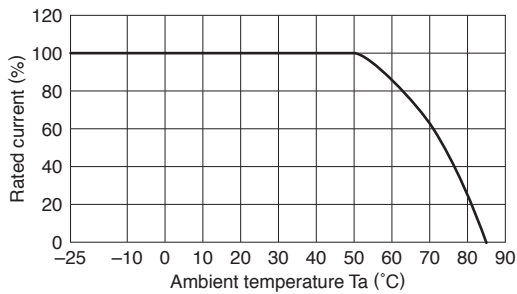
CIRCUIT DIAGRAM



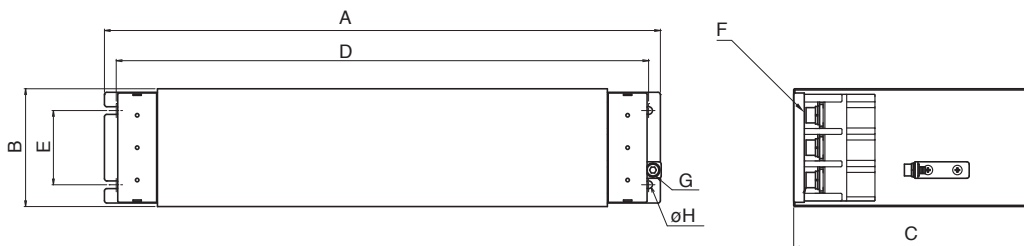
ELECTRICAL CHARACTERISTICS

Part No.	Rated voltage (AC/DC)	Rated current (AC/DC)	Withstand voltage	Insulation resistance	Leakage current	Operating temperature range	With derating over	DC resistance (mΩ)	Attenuation frequency range (MHz)		Weight (kg)
									Common mode	Differential mode	
									at 25dB	at 25dB	
RTHB-5006	500V	6A	AC.2500V 60s [Between line to ground]	100MΩ min. [DC.500V/ 1min]	2.5mA max. [250V/60Hz] 5mA max. [500V/60Hz]	-25 to +85°C	50°C	290 max.	0.1 to 30	0.1 to 30	0.75
RTHB-5010		10A						120 max.	0.1 to 20	0.2 to 30	0.78
RTHB-5020		20A						50 max.	0.1 to 20	0.2 to 30	1.10
RTHB-5030		30A						26 max.	0.2 to 20	0.2 to 30	1.10
RTHB-5040		40A						20 max.	0.2 to 20	0.1 to 30	2.24
RTHB-5050		50A						14 max.	0.2 to 20	0.2 to 30	2.24
RTHB-5060		60A						10 max.	0.2 to 20	0.2 to 10	2.24
RTHB-5080		80A						10 max.	0.1 to 10	0.2 to 30	7.70
RTHB-5100		100A						8 max.	0.1 to 10	0.2 to 30	8.20
RTHB-5150		150A						6 max.	0.1 to 10	0.2 to 30	12.50

DERATING GRAPH



MECHANICAL

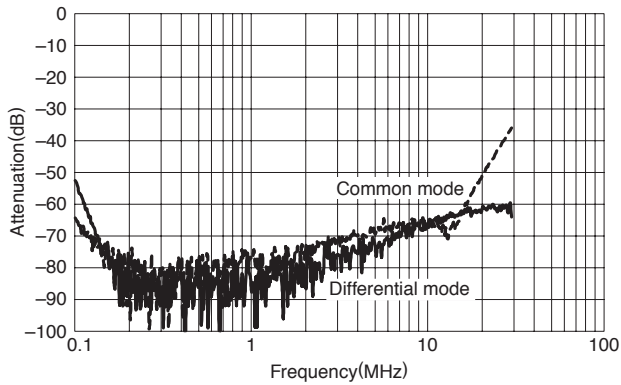


Dimensions in mm

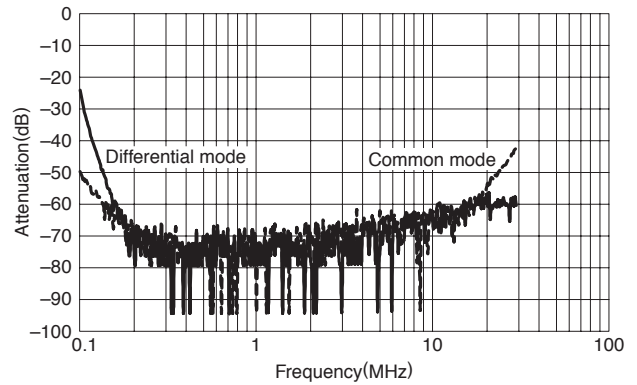
Part No.	A	B	C	D	E	F	G	φH	Recommended clamping torque
RTHB-5006	210	64	100	200	40	M4	M4	4.5	M4 : 1.27N · m M5 : 2.5N · m M6 : 4.8N · m M8 : 7.64N · m
RTHB-5010									
RTHB-5020	240	64	115	230	40	M4	M4	4.5	
RTHB-5030									
RTHB-5040	300	80	140	285	46	M5	M4	5.5	
RTHB-5050									
RTHB-5060									
RTHB-5080	472	100	205	452	63	M8	M6	6.5	
RTHB-5100									
RTHB-5150	534	100	234	514	63	M8	M6	6.5	

■ ATTENUATION vs. FREQUENCY CHARACTERISTICS

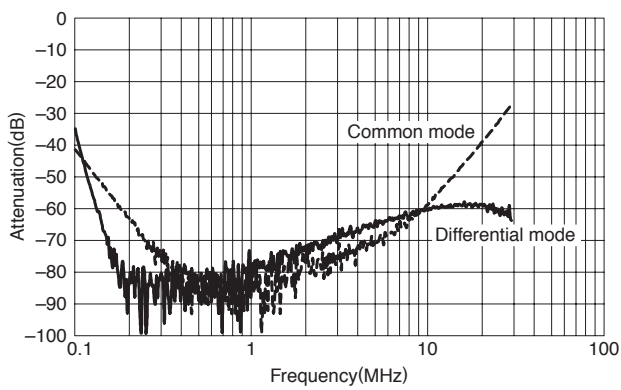
RTHB-5006



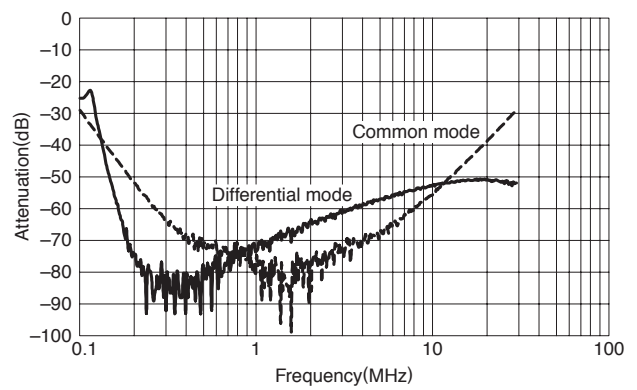
RTHB-5010



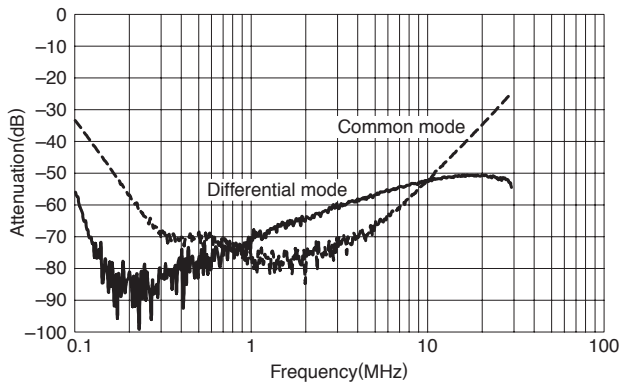
RTHB-5020



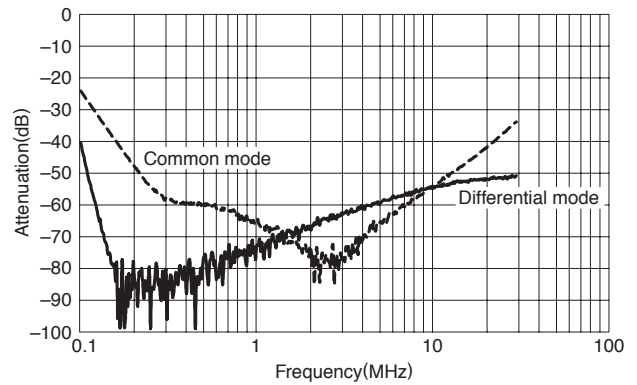
RTHB-5030



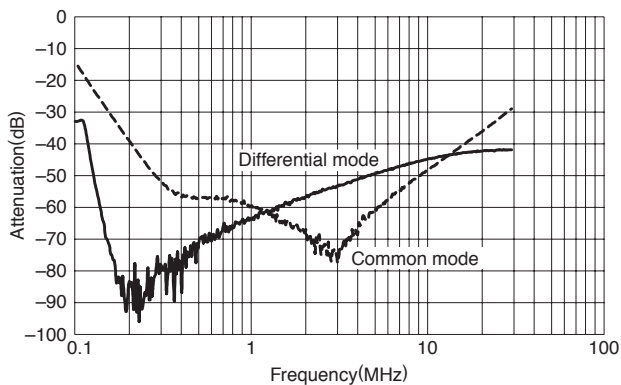
RTHB-5040



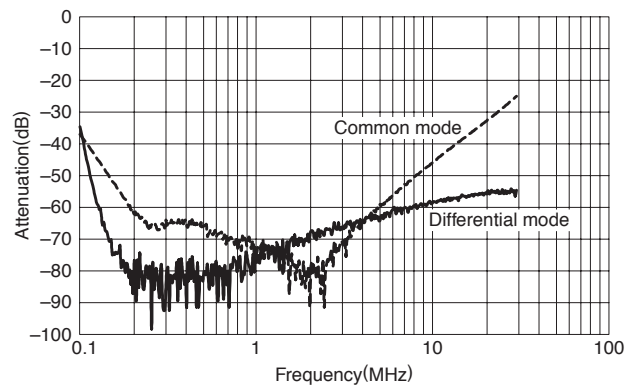
RTHB-5050



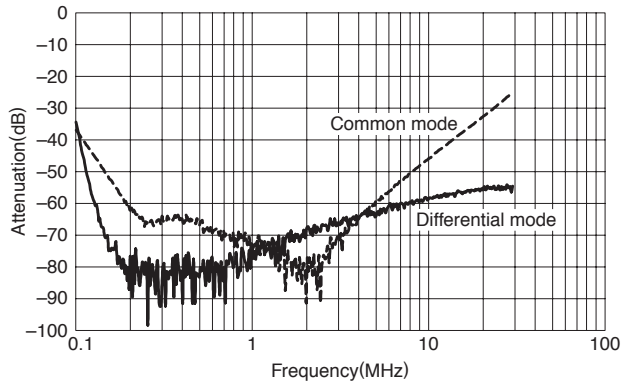
RTHB-5060



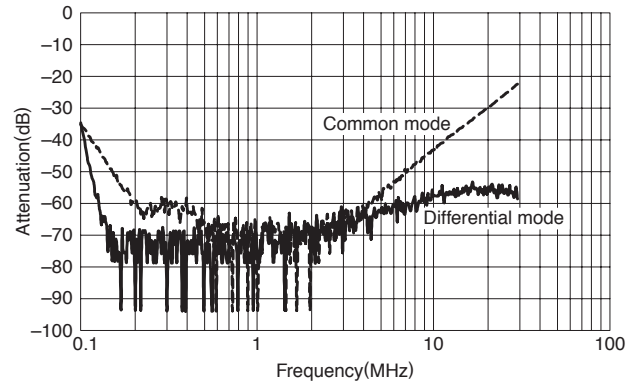
RTHB-5080



RTHB-5100



RTHB-5150



X-ON Electronics

Largest Supplier of Electrical and Electronic Components

Click to view similar products for [Power Line Filters](#) category:

Click to view products by [TDK-Lambda](#) manufacturer:

Other Similar products are found below :

[6609019-3](#) [6609026-5](#) [6609030-6](#) [6609973-2](#) [D30A](#) [7-1609090-5](#) [F2810](#) [F4456A](#) [F7382Z](#) [F7863Z](#) [FAHAV3100ZC000](#) [806276](#) [FN2020B-1-06](#) [FN2080B-10-06](#) [FN2410H-32-33](#) [FP144](#) [FS4153-20-06](#) [FS4353-500-99](#) [12-MMB-030-11-D](#) [DB4-393](#) [15811T200](#) [20B1](#) [LC630](#) [2B1](#) [1609080-2](#) [1609993-8](#) [1-6609070-1](#) [F1100AA02](#) [F1150CC10](#) [F1500CA10](#) [F1500CA15](#) [F4041Z](#) [F7585E](#) [1B1](#) [FN2070A-16-06](#) [FN2090A-20-06](#) [FN2090B-12-06](#) [FN2090Z-1-06](#) [FN2410H-25-33](#) [FN2410H-60-34](#) [FN2410H-8-44](#) [FN2412H-8-44](#) [FN323B-6-01](#) [FN3258H-130-35](#) [FN610R-3-06](#) [20EHQ7](#) [20EHZ7](#) [20K1](#) [30B6](#) [3K1](#)