

- Universal Input (85 - 265VAC)
- Power Factor Corrected
- 200% Peak Power capability on 24V output
- 2 Year Warranty
- Individual output adjustment

ZWD-PAF Series

100W to 440W

Dual Output Power Supplies

Key Market Segments & Applications

Factory Automation
Printer and Motor Drives
Kiosks

ZWD-PAF Features and Benefits

Features

- Input Transient Protected
- Power Factor Corrected
- 200% Peak Power Capability

Benefits

- Withstands Harsh Environments
- Supports Global Use
- Can Drive High current Start Up Devices or pulse loads

Specifications

MODEL		ZWD100PAF-0524	ZWD150PAF-0524	ZWD225PAF-0524
ITEMS				
Input Voltage	-	85-265VAC (47-63Hz), 120-370VDC		
Input Current	(1) A	1.3 / 0.65	1.9 / 0.97	2.81 / 1.43
Inrush Current	(1)(2) A	15 / 30		
Power Factor	-	0.99 at 100VAC, 0.95 at 200VAC, Meets EN61000-3-2		
Leakage Current	mA	0.75mA max		
Temperature Coefficient	-	<0.02%/°C		
Overcurrent Protection	(3) -	5V output: >105%, 24V output: >205%		
Overvoltage Protection	(4) V	120- 145%		
Hold Up Time (Typ)	(1) ms	5V output: 40ms, 24V output: 20ms		
Efficiency	(2) %	79 / 81	80 / 82	81 / 83
Remote On/Off	-	On 24V output only, remove jumper to shutdown		
Line Regulation	mV	5V output: 20mV, 24V output: 96mV		
Load Regulation	mV	5V output: 40mV, 24V output: 150mV		
Ripple & Noise	mV	5V output: 120mV, 24V output: 150mV		
Operating Temperature	-	(Open frame or L bracket) -10°C to +70°C, derate linearly to 0% load from 50°C to 70°C		
Operating Temperature	-	(With /A cover option) -10°C to +60°C, derate linearly to 0% load from 40°C to 60°C		
Storage Temperature	-	-30 to +85°C		
Humidity (non condensing)	-	Operating: 20 - 90%RH, Non-operating: 10 - 95% RH		
Cooling	-	Convection cooled		
Withstand Voltage	-	I/P to Gnd 2kVAC (20mA), I/P to O/P 3kVAC (20mA), O/P to Gnd 500VAC (100mA) for 1 min.		
Isolation Resistance	-	>100M at 25°C & 70%RH, Output to Ground 500VDC		
Vibration (non operating)	-	10 - 55Hz (1 minute sweep), 19.6m/s ² constant X, Y, Z 1 hour		
Shock	-	< 196.1 m/s ²		
Safety Agency Approvals	-	IEC/UL/CSA/EN62368-1, 60950-1, CE Mark		
Conducted & Radiated EMI	-	EN55022-B, FCC Class B, VCCI-B		
Immunity	-	EN61000-4-2, -3, -4, -5, -6, -8, -11		
Weight (Typ)	g	460 (780 with cover)	530 (885 with cover)	670 (1065 with cover)
Size (WxHxD)	mm	222 x 75 x 35	222 x 85 x 40	222 x 95 x 45
Warranty	yrs	2 Years		

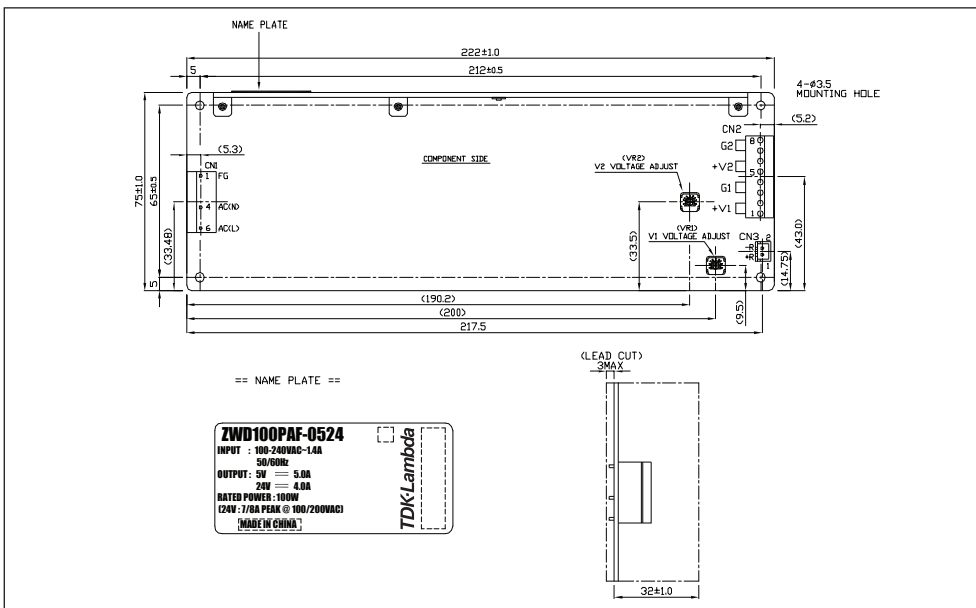
Notes: See installation manual for full specification.

(1) 100/200VAC (2) 25°C ambient (cold start) (3) Avoid prolonged operation in overload (4) OVP on 24V output will shutdown 24V output only

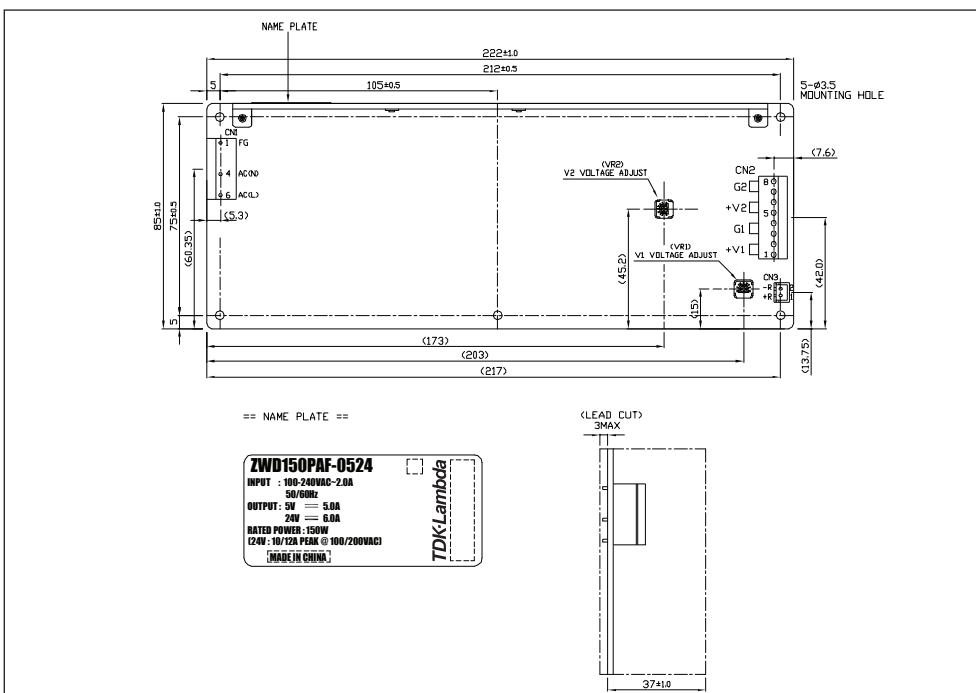
Model Selector

Model	Output Voltage	Output Voltage Accuracy	Adjust Range	Max Current	Peak ^{1,5} Current	Max Peak ^{1,5} Power	Total ^{1,5} Average Power	Peak Power
ZWD100PAF-0524	5V	4.9 - 5.1V	4.5 - 5.5V	5A	-	-	100W	172 / 196W
	24V	23.52 - 24.48V	22.8 - 27.6V	4A	7 / 8A	168 / 192W		
ZWD150PAF-0524	5V	4.9 - 5.1V	4.5 - 5.5V	5A	-	-	150W	246 / 294W
	24V	23.52 - 24.48V	22.8 - 27.6V	6A	10 / 12A	240 / 288W		
ZWD225PAF-0524	5V	4.9 - 5.1V	4.5 - 5.5V	5A	-	-	225W	344 / 440W
	24V	23.52 - 24.48V	22.8 - 27.6V	9A	14 / 18A	336 / 432W		

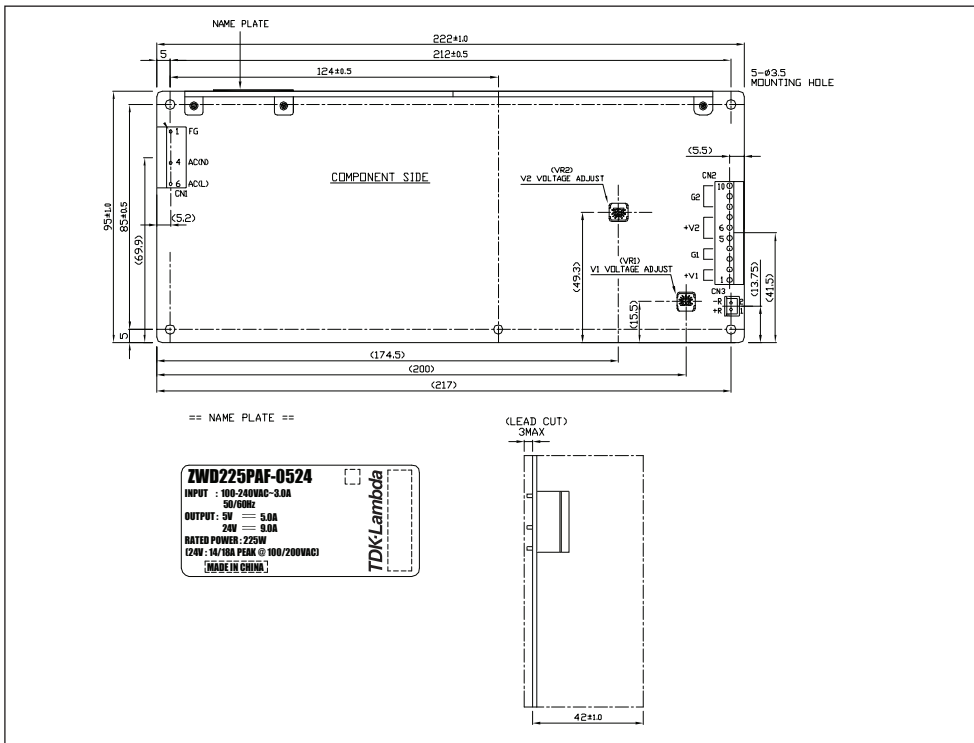
Outline Drawing ZWD100 Series



Outline Drawing ZWD150 Series



Outline Drawing ZWD225 Series



Notes:

- (5) ZWD100PAF: For <10s max, duty cycle ≤0.35
 ZWD150PAF: Up to 10A peak, <10s max, duty cycle ≤0.35; from 10-12A, <5s, duty cycle ≤0.2
 ZWD225PAF: Up to 14A peak, <10s max, duty cycle ≤0.35; from 14-18A, <5s, duty cycle ≤0.2

Options

Suffix	Description
blank	Molex Input & Output Connector
/L	L Bracket
/A	Cover & L Bracket
/J	JST Input & Output Connector
/T	Vertical Mount Screw Terminals

Preferred option combination: blank, /L, /TL, or /TA

Example: **ZWD100PAF-0524/TA**



TDK-Lambda France SAS

3 Avenue du Canada
 Parc Technopolis
 Bâtiment Sigma
 91940 les Ulis
 France
 Tel: +33 1 60 12 71 65
 Fax: +33 1 60 12 71 66
france@fr.tdk-lambda.com
www.emea.lambda.tdk.com/fr



Italy Sales Office

Via Giacomo Matteotti 62
 20092 Cinisello Balsamo (MI)
 Italy
 Tel: +39 02 61 29 38 63
 Fax: +39 02 61 29 09 00
info.italia@it.tdk-lambda.com
www.emea.lambda.tdk.com/it



Netherlands

info@nl.tdk-lambda.com
www.emea.lambda.tdk.com/nl



TDK-Lambda Germany GmbH

Karl-Bold-Strasse 40
 77855 Achern
 Germany
 Tel: +49 7841 666 0
 Fax: +49 7841 5000
info.germany@de.tdk-lambda.com
www.emea.lambda.tdk.com/de



Austria Sales Office

Aredstrasse 22
 2544 Leobersdorf
 Austria
 Tel: +43 2256 655 84
 Fax: +43 2256 645 12
info@at.tdk-lambda.com
www.emea.lambda.tdk.com/at



Switzerland Sales Office

Eichtalstrasse 55
 8634 Hombrechtikon
 Switzerland
 Tel: +41 44 850 53 53
 Fax: +41 44 850 53 50
info@ch.tdk-lambda.com
www.emea.lambda.tdk.com/ch



Nordic Sales Office

Haderslevvej 36B
 DK-6000 Kolding
 Denmark
 Tel: +45 8853 8086
info@dk.tdk-lambda.com
www.emea.lambda.tdk.com/dk



TDK-Lambda UK Ltd.

Kingsley Avenue
 Ilfracombe
 Devon EX34 8ES
 United Kingdom
 Tel: +44 (0) 12 71 85 66 66
 Fax: +44 (0) 12 71 86 48 94
info@uk.tdk-lambda.com
www.emea.lambda.tdk.com/uk



TDK-Lambda Ltd.

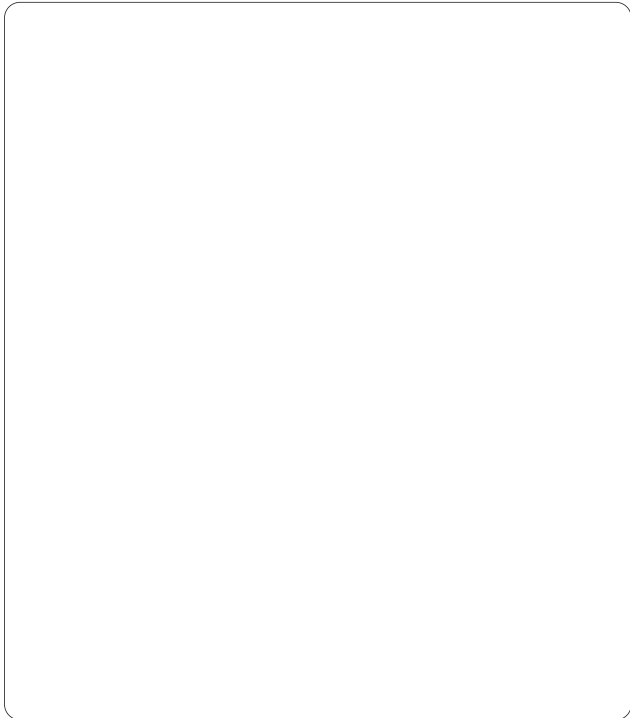
1 Alexander Yanai
 Segula
 Petah-Tikva
 Israel
 Tel: +9 723 902 4333
 Fax: +9 723 902 4777
info@tdk-lambda.co.il
www.emea.lambda.tdk.com/il



C.I.S.

Commercial Support:
 Tel: +7 (495) 665 2627
Technical Support:
 Tel: +7 (812) 658 0463
info@tdk-lambda.ru
www.emea.lambda.tdk.com/ru

Local Distribution



X-ON Electronics

Largest Supplier of Electrical and Electronic Components

Click to view similar products for [Switching Power Supplies](#) category:

Click to view products by [TDK-Lambda](#) manufacturer:

Other Similar products are found below :

[70841011](#) [73-551-0005](#) [73-551-0048](#) [PS3E-B12F](#) [PS3E-E12F](#) [AAD600S-4-OP](#) [R22095](#) [KD0204](#) [9021](#) [LDIN100150](#) [LPM000-BBAR-01](#)
[LPX17S-C](#) [EVS57-10R6/R](#) [FP80](#) [FRV7000G](#) [22929](#) [PS3E-F12F](#) [CQM1IA121](#) [40370121900](#) [VI-PU22-EXX](#) [40370121910](#) [LDIN5075](#)
[LPM615-CHAS](#) [LPX140-C](#) [09-160CFG](#) [70841025](#) [VPX3000-CBL-DC](#) [LPM000-BBAR-05](#) [LPM000-BBAR-08](#) [LPM124-OUTA1-48](#)
[LPM000-BBAR-07](#) [LPM109-OUTA1-10](#) [LPM616-CHAS](#) [08-30466-1055G](#) [08-30466-2175G](#) [08-30466-2125G](#) [DMB-EWG](#) [TVQF-1219-](#)
[18S](#) [6504-226-2101](#) [CQM1IPS01](#) [SP-300-5](#) [CQM1-IPS02](#) [VI-MUL-ES](#) [22829](#) [08-30466-0065G](#) [VI-RU031-EWWX](#) [08-30466-0028G](#) [VI-](#)
[LUL-EU](#) [EP3000AC48INZ](#) [VP-C2104853](#)