

- Universal Input (85 - 265VAC)
- Power Factor Corrected
- Floating Adjustable Fourth Output
- Low Profile <1U High

ZWQ Series

80W to 170W

Quad Output Power Supplies

Key Market Segments & Applications

- Factory Automation
- Test & Measurement
- Light Industrial Equipment

ZWQ Features and Benefits

Features

- Low Profile
- Adjustable Main and Fourth Output
- Power Factor Corrected
- Floating Fourth Output

Benefits

- Fits in 1U Enclosures
- System Optimization
- Supports Global Use
- Can be used as Positive or Negative Output

Specifications

Items	Models		ZWQ80 -5222	ZWQ80 -5223	ZWQ80 -5224	ZWQ80 -5225	ZWQ130 -5222	ZWQ130 -5223	ZWQ130 -5224	ZWQ130 -5225
Input Voltage	-		85-265VAC (47-63Hz), 120-370VDC							
Input Current	(1)	A	1.6 / 0.8				2.6 / 1.3			
Inrush Current	(1)	A	14/28							
Power Factor	-		Meets EN61000-3-2							
Temperature Coefficient	-		<0.02%/°C							
Max Output Power (convection)	W		80				130			
Max Output Power (forced air)	W		104	88.7	104	104	170	149.6	170	170
Overpower Protection	(2)	W	>109	>93	>109	>109	>173	>152	>173	>173
Minimum Load	A		V1: 0.9A Conv, 1.4A Forced Air				V1: 1.5A Conv, 2.1A Forced Air			
Output Voltage Accuracy	%		±5% for outputs V2 and V3							
Efficiency (Typ)	%		72							
Hold Up Time	(1)	ms	20							
Leakage Current	-		0.75mA max, 0.2mA (Typ) at 100VAC / 0.44mA(Typ) at 230VAC							
Remote On / Off	-		See installation manual (Not available with /A cover option)							
Oper Temp (convection cooled)	-		-10°C to 60°C, derate linearly to 50% load from 40°C to 60°C. (3)							
Oper Temp (forced air cooled)	-		-10°C to 70°C, derate linearly to 50% load from 50°C to 70°C. (>30cfm airflow) (3)							
Storage Temperature	-		-30°C to +85°C							
Humidity (non condensing)	-		Operating: 30 - 90% RH; Non-operating 10-95% RH							
Withstand Voltage	-		I/P~Gnd 2kVAC (20mA), I/P~O/P 3kVAC (20mA), O/P~Gnd 500VAC (100mA) for 1 min.							
Isolation Resistance	-		>100MΩ at 25°C & 70%RH, Output to Ground 500VDC							
Vibration (non operating)	-		10 - 55Hz (1 minute sweep), 19.6m/s ² constant X, Y, Z 1 hour							
Shock	-		< 196.1 m/s ²							
Safety Agency Approvals	-		IEC/UL/CSA/EN62368-1, 60950-1, CE Mark							
Conducted & Radiated EMI	-		EN55011, EN55022-B, FCC Class B, VCCI-B							
Immunity	-		EN61000-4-2,-3,-4,-5,-6,-8,-11							
Weight (Typ)	g		550				730			
Size (W x H x D)	mm		93.5 x 35 x 210				106 x 35 x 225			
Warranty	yr		1							

Notes:

(1) 100/200VAC

(2) Avoid prolonged operation in overload

(3) /A version - additional derating - See installation manual

Model Selector									
MODEL	Output	Voltage (V)	Voltage Adjust Range (V)	Convect. (A)	Peak or Forced Air (A)(4)	Max Load Reg (mV)	Max Line Reg (mV)	Ripple Noise (mV)	OVP (V)(5)
ZWQ80-5222	V1	5	5.0-5.25	8.0	10.0	100	20	120	5.7-7.0
	V2	+12/15*	+12/+15	2.0	2.5	300	48	150	16.5-22.5
	V3	-12/15*	-12/-15	2.0	2.5	300	48	150	16.5-22.5
	V4	12	11.4-12.6	3.0	4.0	300	48	150	13.8-16.2
ZWQ80-5223	V1	5	5.0-5.25	8.0	10.0	100	20	120	5.7-7.0
	V2	+12/15*	+12/+15	2.0	2.5	300	48	150	16.5-22.5
	V3	-12/15*	-12/-15	2.0	2.5	300	48	150	16.5-22.5
	V4	3.3	2.0-3.63	7.0	9.0	100	20	120	3.79-4.95
ZWQ80-5224	V1	5	5.0-5.25	8.0	10.0	100	20	120	5.7-7.0
	V2	+12/15*	+12/+15	2.0	2.5	300	48	150	16.5-22.5
	V3	-12/15*	-12/-15	2.0	2.5	300	48	150	16.5-22.5
	V4	24	22.8-25.2	1.5	2.0	400	96	200	27.6-32.4
ZWQ80-5225	V1	5	5.0-5.25	8.0	10.0	100	20	120	5.7-7.0
	V2	+12/15*	+12/+15	2.0	2.5	300	48	150	16.5-22.5
	V3	-12/15*	-12/-15	2.0	2.5	300	48	150	16.5-22.5
	V4	5	2.0-5.25	7.0	9.0	100	20	120	5.7-7.0
ZWQ130-5222	V1	5	5.0-5.25	15.0	19.0	100	20	120	5.7-7.0
	V2	+12/15*	+12/+15	4.0	5.0	300	48	150	16.5-22.5
	V3	-12/15*	-12/-15	4.0	5.0	300	48	150	16.5-22.5
	V4	12	11.4-12.6	4.0	5.0	300	48	150	11.4-12.6
ZWQ130-5223	V1	5	5.0-5.25	15.0	19.0	100	20	120	5.7-7.0
	V2	+12/15*	+12/+15	4.0	5.0	300	48	150	16.5-22.5
	V3	-12/15*	-12/-15	4.0	5.0	300	48	150	16.5-22.5
	V4	3.3	2.0-3.63	10.0	12.0	100	20	120	3.79-4.95
ZWQ130-5224	V1	5	5.0-5.25	15.0	19.0	100	20	120	5.7-7.0
	V2	+12/15*	+12/+15	4.0	5.0	300	48	150	16.5-22.5
	V3	-12/15*	-12/-15	4.0	5.0	300	48	150	16.5-22.5
	V4	24	22.8-25.2	2.0	2.5	400	96	200	27.6-32.4
ZWQ130-5225	V1	5	5.0-5.25	15.0	19.0	100	20	120	5.7-7.0
	V2	+12/15*	+12/+15	4.0	5.0	300	48	150	16.5-22.5
	V3	-12/15*	-12/-15	4.0	5.0	300	48	150	16.5-22.5
	V4	5	2.0-5.25	10.0	12.0	100	20	120	5.7-7.0

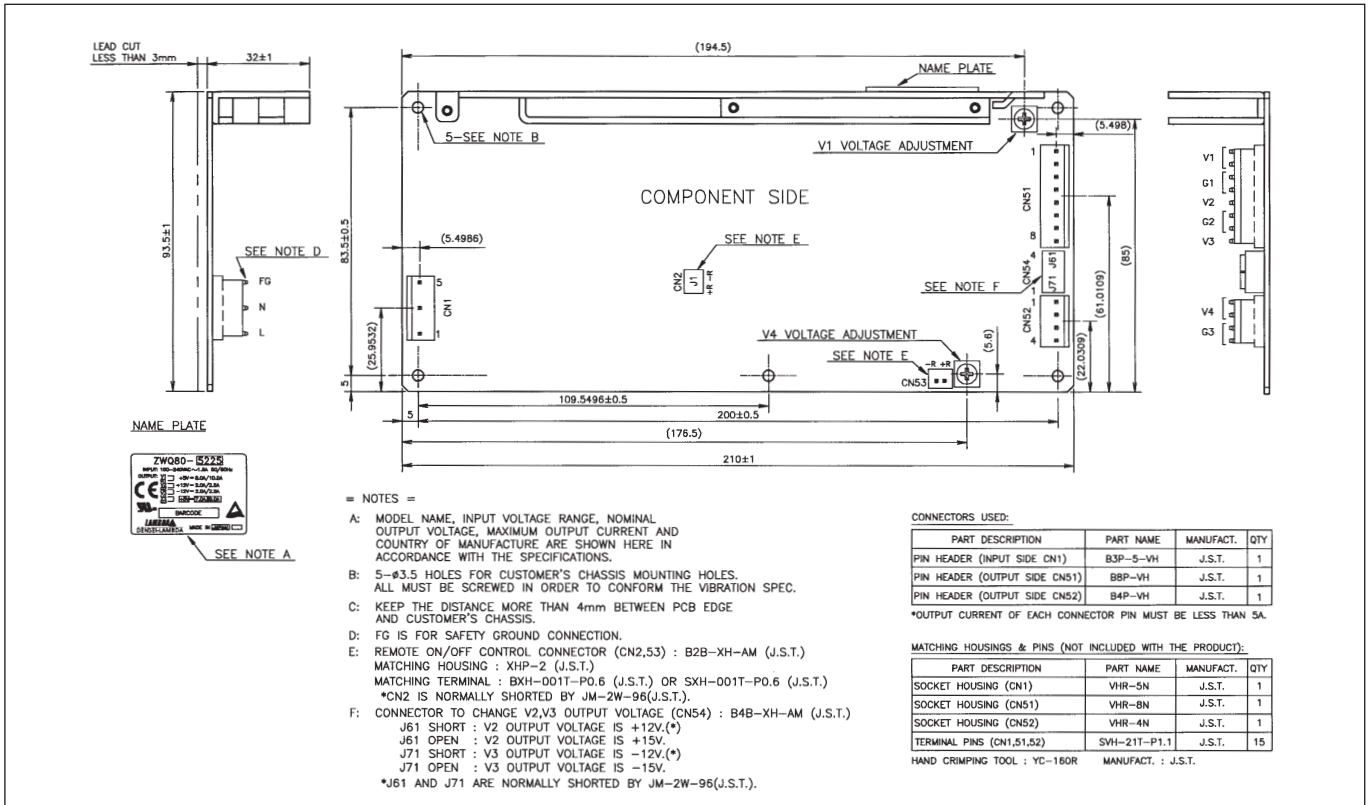
* User selectable via connector on PCB. Outputs are floating from V1 & V4

Notes:

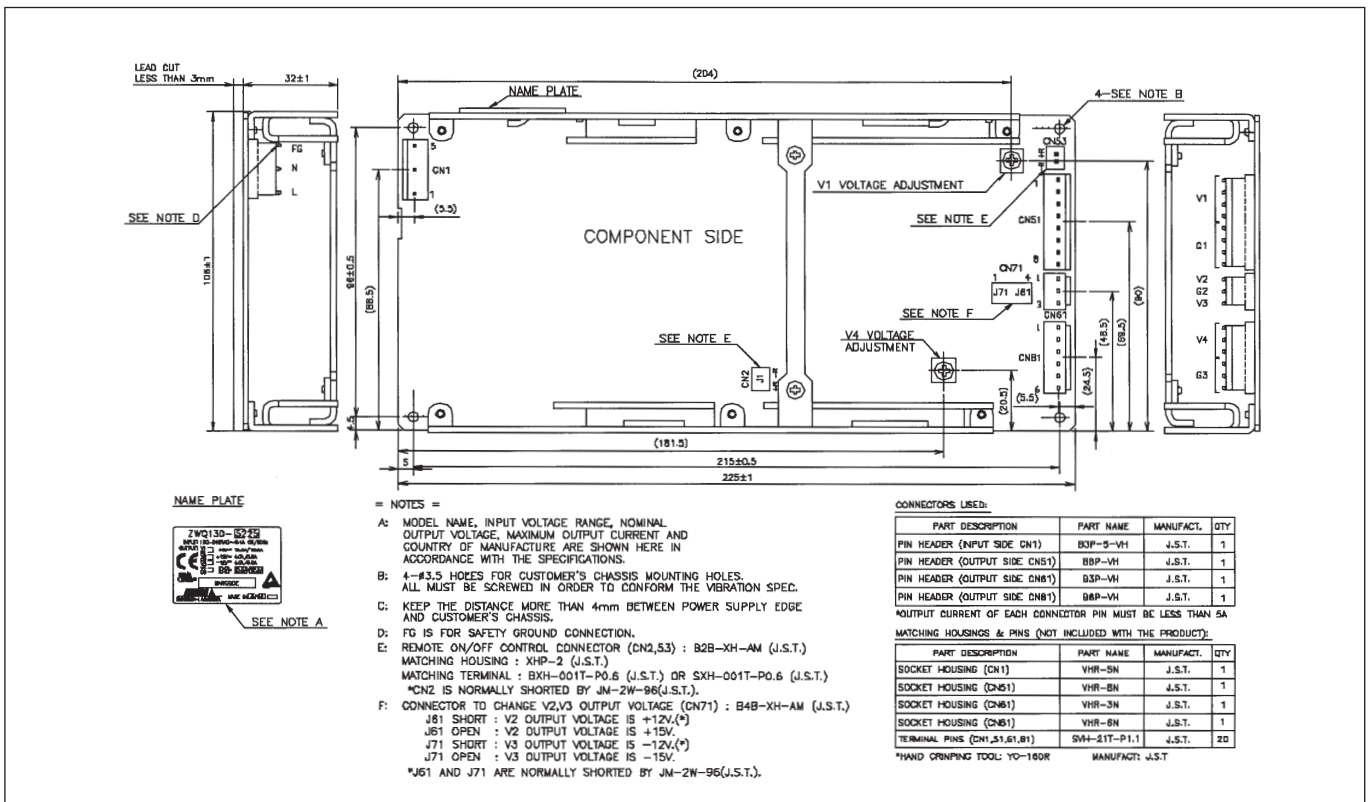
- (4) Peak current draw must not exceed 10s duration, duty cycle 35%.
- (5) OVP on any output will shut down all outputs. Recycle AC input to reset.

Options	
Suffix	Description
blank	No cover or L Bracket
/L	L Bracket
/A	Cover and L Bracket

Outline Drawing ZWQ80 Series



Outline Drawing ZWQ130 Series





TDK-Lambda France SAS

3 Avenue du Canada
 Parc Technopolis
 Bâtiment Sigma
 91940 les Ulis
 France
 Tel: +33 1 60 12 71 65
 Fax: +33 1 60 12 71 66
france@fr.tdk-lambda.com
www.emea.lambda.tdk.com/fr



Italy Sales Office

Via Giacomo Matteotti 62
 20092 Cinisello Balsamo (MI)
 Italy
 Tel: +39 02 61 29 38 63
 Fax: +39 02 61 29 09 00
info.italia@it.tdk-lambda.com
www.emea.lambda.tdk.com/it



Netherlands

info@nl.tdk-lambda.com
www.emea.lambda.tdk.com/nl



TDK-Lambda Germany GmbH

Karl-Bold-Strasse 40
 77855 Achern
 Germany
 Tel: +49 7841 666 0
 Fax: +49 7841 5000
info.germany@de.tdk-lambda.com
www.emea.lambda.tdk.com/de



Austria Sales Office

Aredstrasse 22
 2544 Leobersdorf
 Austria
 Tel: +43 2256 655 84
 Fax: +43 2256 645 12
info@at.tdk-lambda.com
www.emea.lambda.tdk.com/at



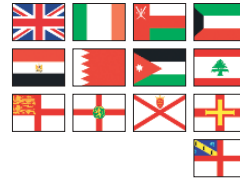
Switzerland Sales Office

Eichtalstrasse 55
 8634 Hombrechtikon
 Switzerland
 Tel: +41 44 850 53 53
 Fax: +41 44 850 53 50
info@ch.tdk-lambda.com
www.emea.lambda.tdk.com/ch



Nordic Sales Office

Haderslevvej 36B
 DK-6000 Kolding
 Denmark
 Tel: +45 8853 8086
info@dk.tdk-lambda.com
www.emea.lambda.tdk.com/dk



TDK-Lambda UK Ltd.

Kingsley Avenue
 Ilfracombe
 Devon EX34 8ES
 United Kingdom
 Tel: +44 (0) 12 71 85 66 66
 Fax: +44 (0) 12 71 86 48 94
info@uk.tdk-lambda.com
www.emea.lambda.tdk.com/uk



TDK-Lambda Ltd.

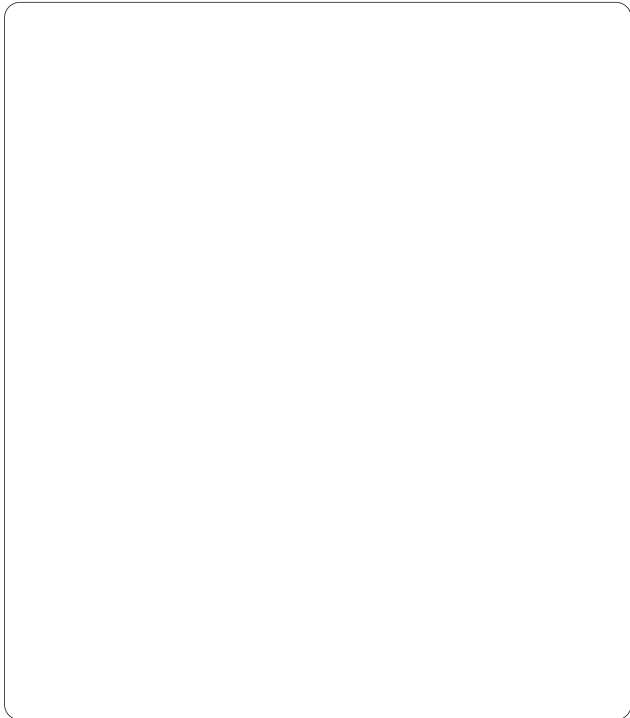
1 Alexander Yanai
 Segula
 Petah-Tikva
 Israel
 Tel: +9 723 902 4333
 Fax: +9 723 902 4777
info@tdk-lambda.co.il
www.emea.lambda.tdk.com/il



C.I.S.

Commercial Support:
 Tel: +7 (495) 665 2627
Technical Support:
 Tel: +7 (812) 658 0463
info@tdk-lambda.ru
www.emea.lambda.tdk.com/ru

Local Distribution



X-ON Electronics

Largest Supplier of Electrical and Electronic Components

Click to view similar products for [Switching Power Supplies](#) category:

Click to view products by [TDK-Lambda](#) manufacturer:

Other Similar products are found below :

[70841011](#) [73-551-0005](#) [73-551-0048](#) [PS3E-B12F](#) [PS3E-E12F](#) [AAD600S-4-OP](#) [R22095](#) [KD0204](#) [9021](#) [LDIN100150](#) [LPM000-BBAR-01](#)
[LPX17S-C](#) [EVS57-10R6/R](#) [FP80](#) [FRV7000G](#) [22929](#) [PS3E-F12F](#) [CQM1IA121](#) [40370121900](#) [VI-PU22-EXX](#) [40370121910](#) [LDIN5075](#)
[LPM615-CHAS](#) [LPX140-C](#) [09-160CFG](#) [70841025](#) [VPX3000-CBL-DC](#) [LPM000-BBAR-05](#) [LPM000-BBAR-08](#) [LPM124-OUTA1-48](#)
[LPM000-BBAR-07](#) [LPM109-OUTA1-10](#) [LPM616-CHAS](#) [08-30466-1055G](#) [08-30466-2175G](#) [08-30466-2125G](#) [DMB-EWG](#) [TVQF-1219-](#)
[18S](#) [6504-226-2101](#) [CQM1IPS01](#) [SP-300-5](#) [CQM1-IPS02](#) [VI-MUL-ES](#) [22829](#) [08-30466-0065G](#) [VI-RU031-EWWX](#) [08-30466-0028G](#) [VI-](#)
[LUL-EU](#) [EP3000AC48INZ](#) [VP-C2104853](#)