



EDM Add-ons and Accessories

TDHJ070NA-4RES-KIT



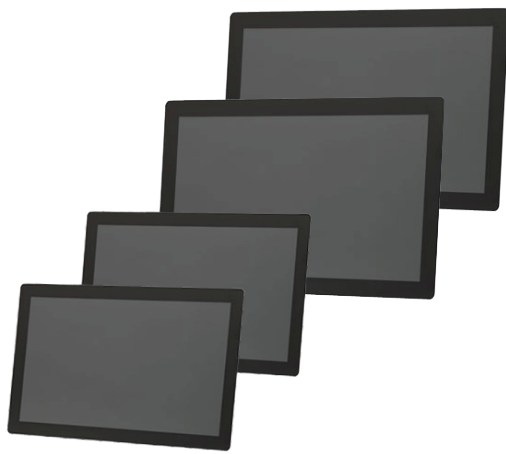
7 inch touchscreen startkit for Fairy and Wizard development boards.

Pack content:

- LVDS-cable
- 4-wire touch cable
- 7" LCD display CMI HJ070NA-4RES
 - 1024x600 resolution
 - 250 nits brightness
 - 4 wire resistive touchscreen
 - dimensions 165.75x 105.39x 3.65 mm
- Adaptor board (EDM-LVDS-HJ070NA-4w-Touch)
 - translate LVDS and touchsignals from EDM carrier boards to CMI HJ070NA-4RES



EDM Display and Touch Solutions



A broad selection of display starterkit solutions is available for EDM development kits with the following characteristics

- LCD displays (7~32 inch)
- Resistive or Projective capacitive touch screens
- High Brightness options available
- Wide temperature range options
- Upto 5 years longevity
- Software drivers available for Linux and Android



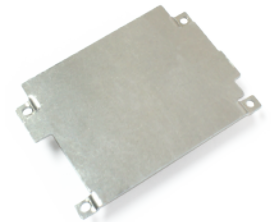
For an overview of available touchscreen solutions and displays. Visit the TechNexion homepage or ask your distributor for assistance.



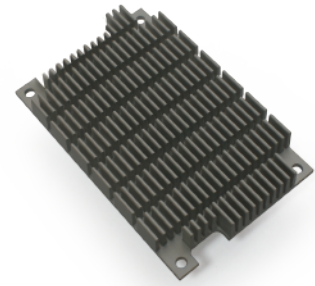
Thermal Solutions

A selection of heatspreaders, passive and active heatsinks for heat dissipation is available to meet specific application requirements in demanding and high performance applications.

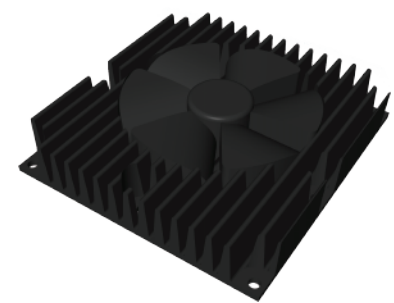
Heatspreaders



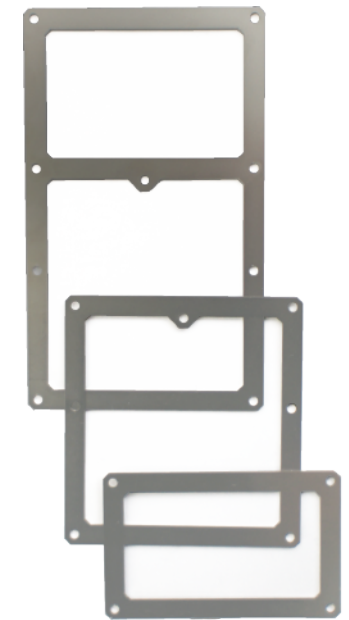
Passive Heatsinks



Active Heatsinks



EDM Mount Frames



- EDM-C-Bracket EDM Compact carrier board mount bracket
- EDM-S-Bracket EDM Standard carrier board mount bracket
- EDM-X-Bracket EDM Extended carrier board mount bracket

For thermal solutions and mounting options for EDM compatible products. Visit the TechNexion homepage or ask your distributor for assistance.



X-ON Electronics

Largest Supplier of Electrical and Electronic Components

Click to view similar products for [Display Development Tools](#) category:

Click to view products by [TechNexion](#) manufacturer:

Other Similar products are found below :

[KIT 60121-3](#) [S5U13U11P00C100](#) [MAX14521EEVKIT](#) [KIT 60145-3](#) [S5U13748P00C100](#) [DFR0413](#) [3248](#) [DLPLCR90EVM](#)
[MAX20069EVKIT#](#) [KIT95000-3](#) [LCD-16396](#) [PIM370](#) [1109](#) [MCIMX-LVDS1](#) [MIKROE-2449](#) [MIKROE-2453](#) [131](#) [DEV-13628](#) [1590](#)
[MIKROE-2269](#) [1601](#) [1770](#) [1947](#) [1983](#) [1987](#) [2050](#) [2218](#) [2219](#) [2260](#) [2345](#) [2418](#) [2423](#) [2454](#) [2455](#) [2478](#) [2674](#) [SK-220RD-PI](#) [FIT0477](#) [333](#)
[1774](#) [334](#) [TE-M321-SDK](#) [DFR0428](#) [cs-epapersk-03](#) [338](#) [DEV-14442](#) [FIT0478](#) [cs-paperino-01](#) [OM-E-OLE](#) [ALTHSMCMIPILCD](#)